

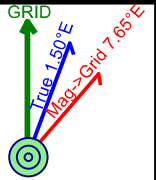


Job Number: KD231103
Company: Continental Resources, INC
Lease/Well: UTL 0708A #0601H
Location: 9.2 miles NW direction from Pyote
Rig Name: Transcend 4
State/County: Texas/ Ward
Country: USA
API Number: 42-475-38539

Elev. GL: 2768.00 ft **RKB:** 10.00 ft
System: US State Plane 1927 (Exact solution)
Group: Texas Central 4203
Datum: CLARKE 1866
Mag. Decl.: 6.15° (C:\HawkEye\IGRF2020.mif)
Grid Conv.: -1.50147 W
Date: Wednesday, May 8, 2024



Calculated by HawkEye Software
 Minimum Curvature Method
 Vertical Section Plane 0.00°
 Northing (US ft): 721979.80 Easting (US ft): 1092682.10
 Latitude: 31°37'8.8004" N Longitude: -103°14'54.5103" W
 Direction Reference: Grid North



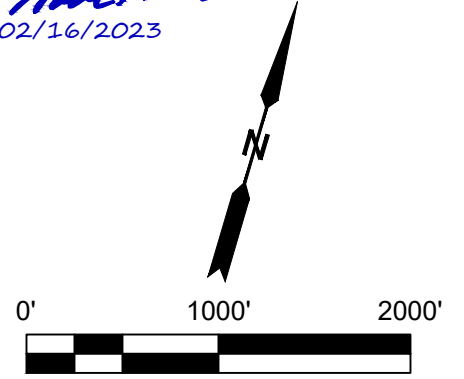
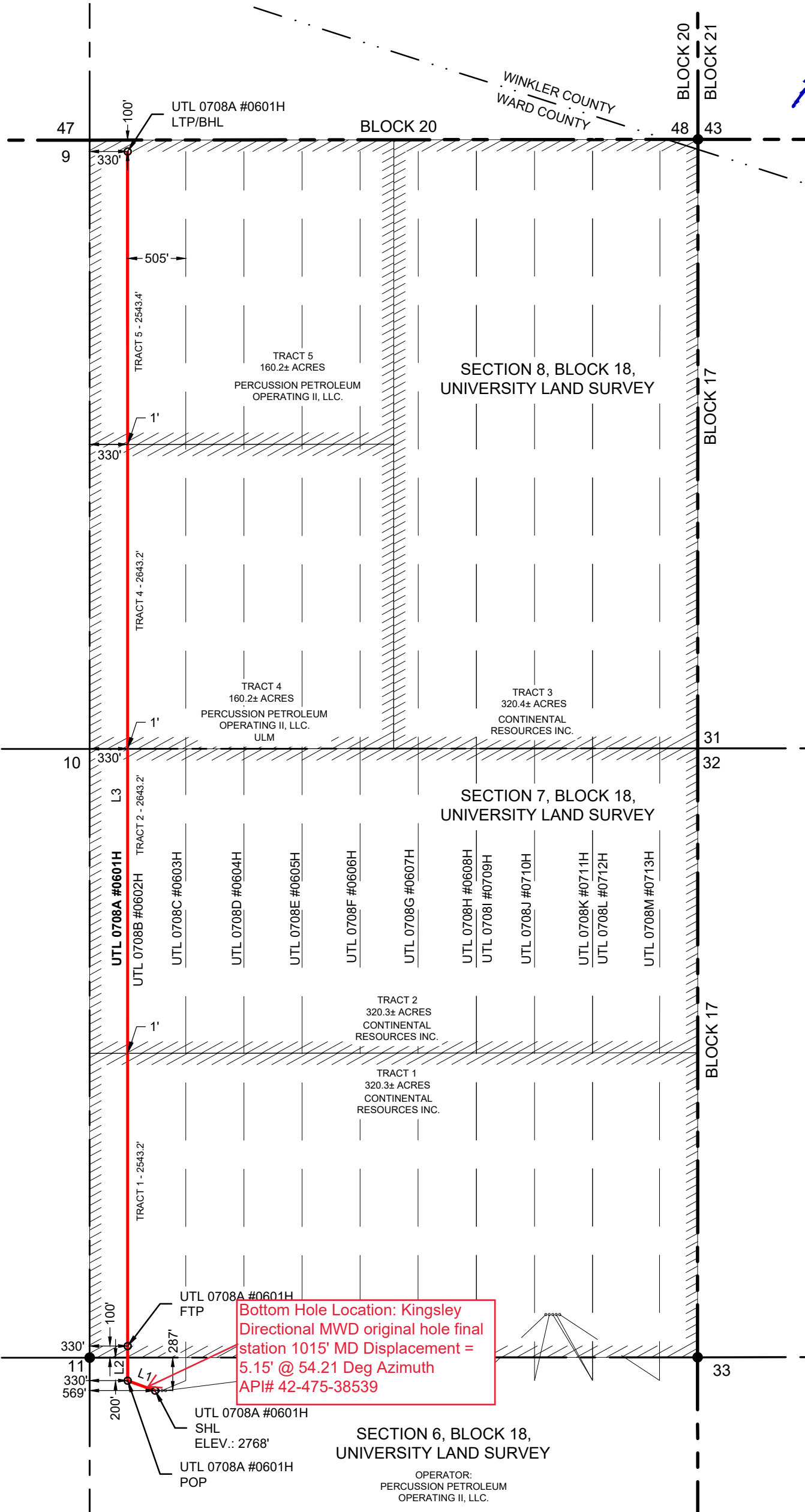
#	Measured Depth (Ft)	INC Deg	AZM Deg	TVD (Ft)	VS (Ft)	NS (Ft)	EW (Ft)	Closure Dir Deg	Closure (Ft)	
Tie-In Data										
1	0.00	0.00	0.00	0.00	0.00	0.00	0.00	0.00	0.00	
2	147.00	0.60	125.60	147.00	-0.45	-0.45	0.63	125.60	0.77	
3	232.00	0.80	134.60	231.99	-1.12	-1.12	1.41	128.55	1.80	
4	323.00	1.10	118.70	322.98	-1.99	-1.99	2.63	127.12	3.30	
5	418.00	1.10	102.60	417.96	-2.63	-2.63	4.32	121.30	5.05	
6	512.00	0.40	72.30	511.95	-2.72	-2.72	5.51	116.29	6.15	
7	606.00	0.40	339.70	605.95	-2.32	-2.32	5.71	112.07	6.16	
8	701.00	0.70	11.00	700.95	-1.44	-1.44	5.71	104.12	5.88	
9	795.00	0.90	339.30	794.94	-0.18	-0.18	5.55	91.86	5.56	
10	889.00	0.80	332.80	888.93	1.09	1.09	4.99	77.65	5.11	
11	1015.00	1.10	340.00	1014.91	3.01	3.01	4.18	54.21	5.15	
TD Projection to BIT										
12	1065.00	1.10	340.00	1064.90	3.91	3.91	3.85	44.52	5.49	

UTL 0708A #0601H	NORTHING (Y) (NAD 27)	EASTING (X) (NAD 27)	LATITUDE (NAD 27)	LONGITUDE (NAD 27)	SECTION LINE		SECTION LINE		LEASE LINE		LEASE LINE		SECTION
					FOOTAGE	FNL/FSL	FOOTAGE	FEL/FWL	FOOTAGE	FNL/FSL	FOOTAGE	FEL/FWL	
SURFACE HOLE LOCATION (SHL)	721979.8'	1092682.1'	31.619111°	-103.248475°	287'	FNL	569'	FWL	287'	FNL	569'	FWL	6
POINT OF PENETRATION (POP)	721996.1'	1092428.8'	31.619138°	-103.249290°	200'	FNL	330'	FWL	200'	FNL	330'	FWL	6
FIRST TAKE POINT (FTP)	722284.1'	1092344.8'	31.619923°	-103.249584°	100'	FSL	330'	FWL	100'	FSL	330'	FWL	7
LAST TAKE POINT/BOTTOM HOLE LOCATION (LTP/BHL)	732242.2'	1089440.6'	31.647081°	-103.259752°	100'	FNL	330'	FWL	100'	FNL	330'	FWL	8

LINE	BEARING	DISTANCE
L1	N 86°19'41" W	253.8'
L2	N 16°15'33" W	300.0'
L3	N 16°15'33" W	10373.0'
TOTAL		10926.8'



Hunter Wade Wills
02/16/2023



SCALE: 1" = 1000'

NOTE: AREA IS LOCATED APPROXIMATELY 9.2 MILES NORTHWEST OF PYOTE, WARD COUNTY, TEXAS.



3300 NORTH A STREET, BUILDING 2, SUITE 120
MIDLAND, TX 79705-5471
TEL (432) 253-3255
TBPELS SURVEYING FIRM #10193998

DATE: 2/15/2023
BY: J. ALVAREZ
AVO: 046846.035

LEGEND

- SUBJECT LATERAL
- SECTION LINE
- COUNTY LINE
- BLOCK LINE
- PROPOSED LATERAL
- LEASE LINE
- FOUND MONUMENT
- UNLEASED MINERAL

NOTES:

- THE BASIS OF BEARING OF THE SURVEY IS THE TEXAS COORDINATE SYSTEM, NORTH AMERICAN DATUM 1927 (NAD 27), CENTRAL ZONE (4203).
- ALL TEXAS STATE PLANE COORDINATES AND GEOGRAPHIC COORDINATES SHOWN HEREON ARE NAD 27 GRID COORDINATES AS COMPUTED BY CORPSCON VERSION 6.0.1. ALL GEOGRAPHIC COORDINATES SHOWN HEREON WERE CONVERTED USING CORPSCON VERSION 6.0.1. UNLESS OTHERWISE NOTED, ALL DISTANCES SHOWN HEREON ARE GRID DISTANCES AND THEY CAN BE CONVERTED TO SURFACE WHEN MULTIPLIED WITH A "SURFACE ADJUSTMENT FACTOR" OF 1.000191647, AS CALCULATED BY CORPSCON.
- ELEVATIONS SHOWN HEREON ARE NAVD88 AS DERIVED BY GPS.
- THIS EXHIBIT IS FOR TEXAS RAILROAD COMMISSION WELL PERMITTING PURPOSES ONLY. BOUNDARY LINES AND ACREAGE SHOWN HEREON REFLECT THE SURVEYORS PROFESSIONAL OPINION OF MINERAL RIGHTS AS DETERMINED FROM CLIENT-PROVIDED OIL AND GAS MINERAL LEASE DOCUMENTATION. THE INFORMATION DEPICTED HEREON SHALL NOT BE USED IN THE CONVEYANCE OF FEE TITLE TO REAL PROPERTY.
- ALL MEASUREMENTS TO LEASE, UNIT, AND SURVEY LINES ARE PERPENDICULAR TO SAID LINES.
- THIS SURVEY WAS PREPARED WITHOUT THE BENEFIT OF A TITLE REPORT.

CONTINENTAL RESOURCES, INC.

PERMIT PLAT

UTL 0708A #0601H

TRACT 1 - 320.3± ACRES
TRACT 2 - 320.3± ACRES
TRACT 4 - 160.2± ACRES
TRACT 5 - 160.2± ACRES
TRACT TOTAL - 961.0± ACRES

LOCATED IN:

SECTION 6, SECTION 7, AND SECTION 8,
BLOCK 18, UNIVERSITY LAND SURVEY,
WARD COUNTY, TEXAS

Bottom Hole Location: Kingsley Directional MWD original hole final station 1015' MD Displacement = 5.15' @ 54.21 Deg Azimuth API# 42-475-38539