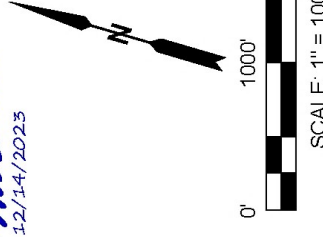
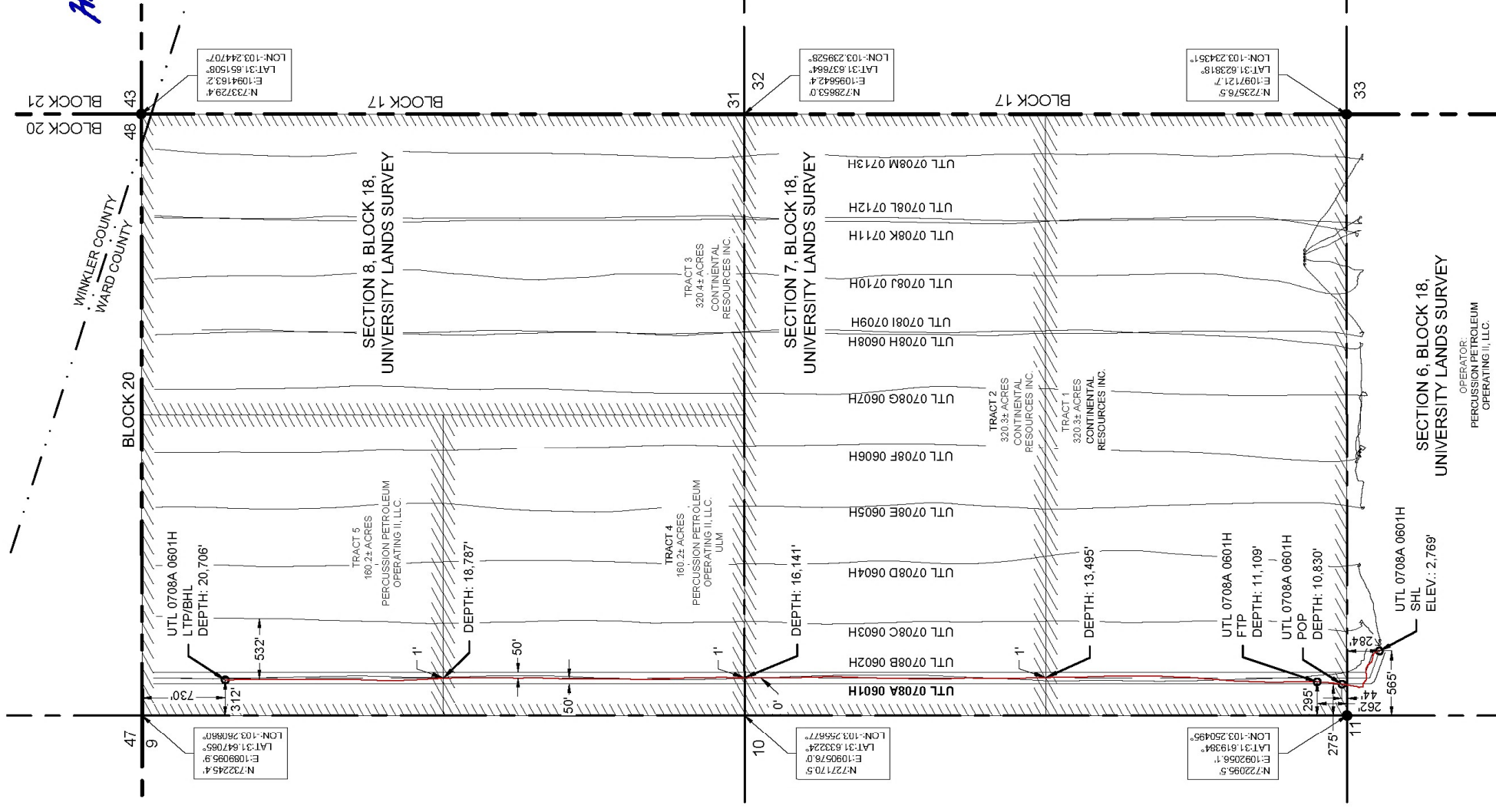


UTL 0708A 0601H	NORTHING (Y) (NAD 27)	EASTING (X) (NAD 27)	LATITUDE (NAD 27)	LONGITUDE (NAD 27)	SECTION LINE		SECTION LINE		SECTION LINE		SECTION LINE	
					FOOTAGE	FNL/FSL	FOOTAGE	FEL/FWL	FOOTAGE	FNL/FSL	FOOTAGE	FEL/FWL
SURFACE HOLE LOCATION (SHL)	721981.3'	1092678.4'	31.619115°	-103.248487°	284'	FNL	284'	FNL	565'	FNL	565'	FNL
POINT OF PENETRATION (POP)	722214.5'	1092307.5'	31.619729°	-103.249698°	44'	FSL	44'	FSL	275'	FSL	275'	FSL
FIRST TAKE POINT (FTP)	722430.2'	1092266.2'	31.620319°	-103.249849°	262'	FSL	262'	FSL	295'	FSL	295'	FSL
LAST TAKE POINT/BOTTOM HOLE LOCATION (LTP/BHL)	731632.2'	1089599.4'	31.645416°	-103.259191°	730'	FNL	730'	FNL	312'	FNL	312'	FNL

UTL 0708A 0601H	DISTANCE
TRACT 1	2,386'
TRACT 2	2,646'
TRACT 4	2,646'
TRACT 5	1,919'
TOTAL	9,597'



NOTE: AREA IS LOCATED APPROXIMATELY 9.2 MILES NORTHWEST OF PYOTE, WARD COUNTY, TEXAS.

half
 3300 NORTH A STREET, BUILDING 2, SUITE 120
 MIDLAND, TX, 79705-5471
 TEL: (432) 253-3255
 TEPPELS SURVEYING FIRM #10183988
 DATE: 12/12/2023
 BY: R. CABELLO
 AVO: 046846.035

LEGEND

- AS-DRILLED SUBJECT LATERAL
- COUNTY LINE
- BLOCK LINE
- PROPOSED LATERAL
- LEASE LINE
- FOUND MONUMENT
- UNLEASED MINERAL
- ULM

NOTES:

- THE BASIS OF BEARING OF THE SURVEY IS THE TEXAS COORDINATE SYSTEM, NORTH AMERICAN DATUM 1927 (NAD 27), CENTRAL ZONE (4203).
- ALL TEXAS STATE PLANE COORDINATES AND GEOGRAPHIC COORDINATES SHOWN HEREON ARE NAD 27 GRID COORDINATES AS COMPUTED BY CORPSON VERSION 6.0.1. ALL GEOGRAPHIC COORDINATES SHOWN HEREON WERE CONVERTED USING CORPSON VERSION 6.0.1. UNLESS OTHERWISE NOTED, ALL DISTANCES SHOWN HEREON ARE GRID DISTANCES AND THEY CAN BE CONVERTED TO SURFACE WHEN MULTIPLIED WITH A "SURFACE ADJUSTMENT FACTOR" OF 1.000191647, AS CALCULATED BY CORPSON.
- ELEVATIONS SHOWN HEREON ARE NAVD88 AS DERIVED BY GPS.
- THIS EXHIBIT IS FOR TEXAS RAILROAD COMMISSION WELL PERMITTING PURPOSES ONLY. BOUNDARY LINES AND ACREAGE SHOWN HEREON REFLECT THE SURVEYORS PROFESSIONAL OPINION OF MINERAL RIGHTS AS DETERMINED FROM CLIENT-PROVIDED OIL AND GAS MINERAL LEASE DOCUMENTATION. THE INFORMATION DEPICTED HEREON SHALL NOT BE USED IN THE CONVEYANCE OF FEE TITLE TO REAL PROPERTY.
- ALL MEASUREMENTS TO LEASE, UNIT, AND SURVEY LINES ARE PERPENDICULAR TO SAID LINES.
- THIS SURVEY WAS PREPARED WITHOUT THE BENEFIT OF A TITLE REPORT.
- THE AS-DRILLED DATA USED TO DEPICT THE WELL BORE PATH WAS PROVIDED BY OTHERS. NO WARRANTY IS EITHER EXPRESSED OR IMPLIED AS TO THE ACCURACY OR THE INFORMATION HEREIN.

CONTINENTAL RESOURCES, INC.

FINAL AS-DRILLED PLAT

UTL 0708A 0601H

TRACT 1 - 320.3± ACRES
 TRACT 2 - 320.3± ACRES
 TRACT 4 - 160.2± ACRES
 TRACT 5 - 160.2± ACRES
 TRACT TOTAL - 961.0± ACRES

LOCATED IN:
 SECTION 6, SECTION 7, AND SECTION 8,
 BLOCK 18, UNIVERSITY LANDS SURVEY,
 WARD COUNTY, TEXAS