



RAILROAD COMMISSION OF TEXAS

Form W-2

1701 N. Congress
P.O. Box 12967
Austin, Texas 78701-2967

Status: Approved
Date: 09/15/2017
Tracking No.: 177075

OIL WELL POTENTIAL TEST, COMPLETION OR RECOMPLETION REPORT, AND LOG

OPERATOR INFORMATION

Operator Name: EP ENERGY E&P COMPANY, L.P. Operator No.: 253385
Operator Address: ATTN CHELSEA CANTRELLE PO BOX 4660 HOUSTON, TX 77210-4660

WELL INFORMATION

API No.: 42-383-39738 County: REAGAN
Well No.: 0112MH RRC District No.: 7C
Lease Name: UNIVERSITY CENTRAL Field Name: LIN (WOLFCAMP)
RRC Lease No.: 17575 Field No.: 53613750
Location: Section: 12, Block: 1, Survey: UNIVERSITY LANDS, Abstract:

Latitude: Longitude:
This well is located 13.15 miles in a WEST
direction from BIG LAKE,
which is the nearest town in the county.

FILING INFORMATION

Purpose of filing: Initial Potential
Type of completion: New Well
Well Type: Producing Completion or Recompletion Date: 01/17/2017

Type of Permit	Date	Permit No.
Permit to Drill, Plug Back, or Deepen	11/18/2016	819958
Rule 37 Exception		
Fluid Injection Permit		
O&G Waste Disposal Permit		
Other:		

COMPLETION INFORMATION

Spud date: 12/13/2016	Date of first production after rig released: 01/17/2017
Date plug back, deepening, recompletion, or drilling operation commenced: 12/13/2016	Date plug back, deepening, recompletion, or drilling operation ended: 01/17/2017
Number of producing wells on this lease in this field (reservoir) including this well: 65	Distance to nearest well in lease & reservoir (ft.): 17.0
Total number of acres in lease: 38716.54	Elevation (ft.): 2936 GL
Total depth TVD (ft.): 8049	Total depth MD (ft.): 18402
Plug back depth TVD (ft.):	Plug back depth MD (ft.): 18345
Was directional survey made other than inclination (Form W-12)? Yes	Rotation time within surface casing (hours): 122.0
Recompletion or reclass? No	Is Cementing Affidavit (Form W-15) attached? Yes
Type(s) of electric or other log(s) run: None	Multiple completion? No
Electric Log Other Description:	
Location of well, relative to nearest lease boundaries	Off Lease : No
of lease on which this well is located: 310.0 Feet from the North Line and 684.0 Feet from the West Line of the UNIVERSITY CENTRAL Lease.	

FORMER FIELD (WITH RESERVOIR) & GAS ID OR OIL LEASE NO.

Field & Reservoir	Gas ID or Oil Lease No.	Well No.	Prior Service Type
-------------------	-------------------------	----------	--------------------

PACKET: N/A

W2:	N/A		
FOR NEW DRILL OR RE-ENTRY, SURFACE CASING DEPTH DETERMINED BY:			
GAU Groundwater Protection Determination		Depth (ft.): 750.0	Date: 09/23/2016
SWR 13 Exception		Depth (ft.):	

INITIAL POTENTIAL TEST DATA FOR NEW COMPLETION OR RECOMPLETION		
Date of test: 06/19/2017		Production method: Flowing
Number of hours tested: 24		Choke size: 64
Was swab used during this test?	No	Oil produced prior to test: 974.00
PRODUCTION DURING TEST PERIOD:		
Oil (BBLs): 210.00		Gas (MCF): 66
Gas - Oil Ratio: 314		Flowing Tubing Pressure: 2930.00
Water (BBLs): 1862		
CALCULATED 24-HOUR RATE		
Oil (BBLs): 210.0		Gas (MCF): 66
Oil Gravity - API - 60.:	38.4	Casing Pressure: 178.00
Water (BBLs): 1862		

CASING RECORD											
Row	Type of Casing	Casing Size (in.)	Hole Size (in.)	Setting Depth (ft.)	Multi - Stage Depth (ft.)	Multi - Shoe Depth (ft.)	Cement Class	Cement Amount (sacks)	Slurry Volume (cu. ft.)	Top of Cement (ft.)	TOC Determined By
1	Surface	9 5/8	12 1/4	924			C/POZ	555	1133.2	0	Circulated to Surface
2	Conventional Production	5 1/2	8 3/4	18397			C/POZ;H/P OZ	2580	4442.0	421	Calculation

LINER RECORD									
Row	Liner Size (in.)	Hole Size (in.)	Liner Top (ft.)	Liner Bottom (ft.)	Cement Class	Cement Amount (sacks)	Slurry Volume (cu. ft.)	Top of Cement (ft.)	TOC Determined By
N/A									

TUBING RECORD			
<u>Row</u>	<u>Size (in.)</u>	<u>Depth Size (ft.)</u>	<u>Packer Depth (ft.)/Type</u>
1	2 7/8	8043	8025 / EUE AS1-X PACKER

PRODUCING/INJECTION/DISPOSAL INTERVAL			
Row	Open hole?	From (ft.)	To (ft.)
1	No	L1 8403	18299.0

ACID, FRACTURE, CEMENT SQUEEZE, CAST IRON BRIDGE PLUG, RETAINER, ETC.			
Was hydraulic fracturing treatment performed?		Yes	
Is well equipped with a downhole actuation sleeve?		If yes, actuation pressure (PSIG): 8787.0	
Production casing test pressure (PSIG) prior to hydraulic fracturing treatment: 8500		Actual maximum pressure (PSIG) during hydraulic fracturing: 8065	
Has the hydraulic fracturing fluid disclosure been reported to FracFocus disclosure registry (SWR29)?		Yes	
Row	Type of Operation	Amount and Kind of Material Used	Depth Interval (ft.)
1	Fracture	ADD PERFS AND FRAC (SEE FRACFOCUS FOR DETAILS)	8403 18299

FORMATION RECORD						
Formations	Encountered	Depth TVD (ft.)	Depth MD (ft.)	Is formation isolated?	Remarks	
GRAYBURG	Yes	3052.0	3074.2	Yes	LOGGED	MWD GR
QUEEN	Yes	2604.7	2623.1	Yes	LOGGED	MWD GR
SAN ANDRES - SALTWATER FLOW, POSSIBLY HEAVY	Yes	3346.4	3369.8	Yes	LOGGED	MWD GR
CLEARFORK	Yes	5391.1	5415.7	Yes	LOGGED	MWD GR
SPRABERRY	Yes	5941.2	5966.0	Yes	LOGGED	MWD GR
WOLFCAMP	Yes	7417.8	7442.8	Yes	PRODUCING INTERVAL	
STRAWN	No			No	NOT PENETRATED	
FUSSELMAN	No			No	NOT PENETRATED	
ELLENBURGER	No			No	NOT PENETRATED	

Do the producing interval of this well produce H2S with a concentration in excess of 100 ppm (SWR 36)?

No

Is the completion being downhole commingled (SWR 10)?

No

REMARKS
UNIVERSITY CENTRAL 0112MH KOP 7673' ALL REQUIRED ADDITIONAL FORMS OR ATTACHMENTS WERE PREVIOUSLY SUBMITTED WITH WRO W-2, TRACKING #176073

RRC REMARKS
<div>PUBLIC COMMENTS: [RRC Staff 2017-09-05 12:08:33.304] EDL=9922 feet, max acres=380, LIN (WOLFCAMP) oil well</div> <div>CASING RECORD :</div> <div>TUBING RECORD:</div> <div>PRODUCING/INJECTION/DISPOSAL INTERVAL :</div> <div>ACID, FRACTURE, CEMENT SQUEEZE, CAST IRON BRIDGE PLUG, RETAINER, ETC. :</div> <div>POTENTIAL TEST DATA:</div>

OPERATOR'S CERTIFICATION	
Printed Name: Rita Martinez-Dean	Title: Associate Analyst
Telephone No.: (713) 997-6212	Date Certified: 08/01/2017



RAILROAD COMMISSION OF TEXAS

1701 N. Congress
P.O. Box 12967
Austin, Texas 78701-2967

Form W-15

Rev. 08/2014

CEMENTING REPORT

Cementer: Fill in shaded areas.
Operator: Fill in other items.

OPERATOR INFORMATION

Operator Name: EP ENERGY E&P COMPANY, L P

Operator P-5 No.: 253385

Cementer Name: *Daniel Book Compress Cementing LLC*

Cementer P-5 No.: *169789*

WELL INFORMATION

District No.: 7C

County: REAGAN

Well No.: 0112MH

API No.: 42-383-39738

Drilling Permit No.: 819958

Lease Name: UNIVERSITY CENTRAL

Lease No.: 17575

Field Name: LIN (WOLFCAMP)

Field No.: 53813750

I. CASING CEMENTING DATA

Type of casing: ☐ Conductor ☒ Surface ☐ Intermediate ☐ Liner ☐ Production

Drilled hole size (in.): 12.25

Depth of drilled hole (ft.): 934

Est. % wash-out or hole enlargement: *100%*

Size of casing in O.D. (in.): 9.625

Casing weight (lbs/ft) and grade: 36" J55 *840#*

No. of centralizers used: *7*

Was cement circulated to ground surface (or bottom of cellar) outside casing? ☒ YES ☐ NO If no for surface casing, explain in Remarks.

Setting depth shoe (ft.):
924

Top of liner (ft.):

Setting depth liner (ft.):

Hrs. waiting on cement before drill-out:

Calculated top of cement (ft.): SURFACE *0'*

Cementing date: 12/13/16

SLURRY

Slurry No.	No. of Sacks	Class	Additives	Volume (cu. ft.)	Height (ft.)
1	400	CLASS C/POZ	SEE REMARKS	924	327
2	155	CLASS C/POZ	SEE REMARKS	209.25	597
3					
Total	<i>555</i>			<i>1133.25</i>	<i>924</i>

II. CASING CEMENTING DATA

Type of casing: ☐ Surface ☐ Intermediate ☐ Production ☐ Tapered production ☐ Multi-stage cement shoe ☐ Multiple parallel strings

Drilled hole size (in.):

Depth of drilled hole (ft.):

Est. % wash-out or hole enlargement:

Size of casing in O.D. (in.):

Casing weight (lbs/ft) and grade:

No. of centralizers used:

Tapered string drilled hole size (in.)

Tapered string depth of drilled hole (ft.)

Upper: Lower:

Upper: Lower:

Tapered string size of casing in O.D. (in.)

Tapered string casing weight (lbs/ft) and grade

Tapered string no. of centralizers used

Upper: Lower:

Upper: Lower:

Upper: Lower:

Was cement circulated to ground surface (or bottom of cellar) outside casing? ☐ YES ☐ NO

Setting depth shoe (ft.):

Hrs. waiting on cement before drill-out:

Calculated top of cement (ft.):

Cementing date:

SLURRY

Slurry No.	No. of Sacks	Class	Additives	Volume (cu. ft.)	Height (ft.)
1					
2					
3					
Total					

III. CASING CEMENTING DATA

Type of casing: ☐ Surface ☐ Intermediate ☐ Production ☐ Tapered production ☐ Multi-stage cement/DV tool ☐ Multiple parallel strings

Drilled hole size (in.):

Depth of drilled hole (ft.):

Est. % wash-out or hole enlargement:

Size of casing in O.D. (in.):

Casing weight (lbs/ft) and grade:

No. of centralizers used:

Tapered string drilled hole size (in.)

Tapered string depth of drilled hole (ft.)

Upper: Lower:

Upper: Lower:

Tapered string size of casing in O.D. (in.)

Tapered string casing weight (lbs/ft) and grade

Tapered string no. of centralizers used

Upper: Lower:

Upper: Lower:

Upper: Lower:

Was cement circulated to ground surface (or bottom of cellar) outside casing? ☐ YES ☐ NO

Setting depth tool (ft.):

Hrs. waiting on cement before drill-out:

Calculated top of cement (ft.):

Cementing date:

SLURRY

Slurry No.	No. of Sacks	Class	Additives	Volume (cu. ft.)	Height (ft.)
1					
2					
3					
Total					

CEMENTING TO SQUEEZE, PLUG BACK OR PLUG AND ABANDON							
	PLUG #1	PLUG #2	PLUG #3	PLUG #4	PLUG #5	PLUG #6	PLUG #7
Cementing Date							
Size of hole or pipe (in.)							
Depth to bottom of tubing or drill pipe (ft.)							
Cement retainer setting depth (ft.)							
CIBP setting depth (ft.)							
Amount of cement on top of CIBP (ft.)							
Sacks of cement used							
Slurry volume pumped (cu. ft.)							
Calculated top of plug (ft.)							
Measured top of plug, if tagged (ft.)							
Slurry weight (lbs/gal)							
Class/type of cement							
Perforate and squeeze (YES/NO)							

REMARKS
Lead-Bentonite, C45, C41P, SALT, KOL-SEAL, PHENOSEAL TAIL-C45, SALT

CEMENTER'S CERTIFICATE: I declare under penalties prescribed in Sec. 91.143, Texas Natural Resources Code, that I am authorized to make this certification, that the cementing of casing and/or the placing of cement plugs in this well as shown in the report was performed by me or under my supervision, and that the cementing data and facts presented on both sides of this form are true, correct, and complete, to the best of my knowledge. This certification covers cementing data only.

DANIEL BEAL

COMPASS WELL SVC

D. Beal

Name and title of cementer's representative	Cementing Company	Signature
10013 W CO RD 157	MIDLAND, TX, 79706	432-561-5970
Address	City, State, Zip Code	Tel: Area Code Number
		Date: mo. day yr. 12/14/16

OPERATOR'S CERTIFICATE: I declare under penalties prescribed in Sec. 91.143, Texas Natural Resources Code, that I am authorized to make this certification, that I have knowledge of the well data and information presented in this report, and that data and facts presented on both sides of this form are true, correct, and complete, to the best of my knowledge. This certification covers all well data.

<i>Derek Motley</i>	<i>Supervisor</i>	<i>Derek Motley</i>
Typed or printed name of operator's representative	Title	Signature
PO Box 4660	Houston TX 77210-4660	713-997-1160
Address	City, State, Zip Code	Tel: Area Code Number
		Date: mo. day yr. 12/14/16

Instructions for Form W-15, Cementing Report

NOTICE: The Form W-15 must be submitted as an attachment to a Form G-1 (Gas Well Back Pressure Test, Completion or Recompletion Report, and Log), Form W-2 (Oil Well Potential Test, Completion or Recompletion Report, and Log), Form W-3 (Plugging Record), or Form W-4 (Application for Multiple Completion), any time cement is pumped in a wellbore.

- What to file:** An operator should file an original and one copy of the completed Form W-15 for each cementing company used on a well. The cementing of different casing strings on a well by one cementing company may be reported on one form.
The Form W-15 should be filed with the Form W-3, Plugging Record, unless the Form W-3 is signed by the cementing company representative. When reporting dry holes, operators must complete Form W-15, in addition to Form W-3, to show any casing cemented in the hole.
- How to file:** An oil and gas completion report and Form W-15 may be filed online using the Commission's Online System (<https://webapps.rrc.state.tx.us/security/login.do>) or a paper copy of the form may be mailed to the Commission in Austin (P.O. Box 12967, Austin, Texas 78711-2967).
- Surface casing:** An operator must set and cement sufficient surface casing to protect all usable-quality water strata, as defined by the Groundwater Advisory Unit in Austin. Sufficient cement shall be used to fill the annular space outside the casing from the shoe to the ground surface or to the bottom of the cellar. Before drilling a well, an operator must obtain a letter from the Groundwater Advisory Unit stating the protection depth. Surface casing should not be set deeper than 200 feet below the specified depth without prior approval from the Commission.
To plug and abandon a well, operators must use only cementers approved by the Commission's Director of Field Operations in accordance with SWR 14 ([http://info.sos.state.tx.us/pls/pub/readtac\\$ext.TacPage?sl=R&app=9&p_dir=&p_rloc=&p_tloc=&p_ploc=&pg=1&p_tac=&ti=16&pt=1&ch=3&rl=14](http://info.sos.state.tx.us/pls/pub/readtac$ext.TacPage?sl=R&app=9&p_dir=&p_rloc=&p_tloc=&p_ploc=&pg=1&p_tac=&ti=16&pt=1&ch=3&rl=14)). Cementing companies, service companies, or operators can qualify as approved cementers by demonstrating that they are able to mix and pump cement in compliance with Commission rules and regulations.
- Estimated % wash-out:** If the estimated % wash-out is less than 20% (or 30% along the Gulf Coast), provide supporting documentation such as a caliper log to show how the estimated % wash-out was obtained.
- Multi-stage cement:** An operator must report the multi-stage cement shoe in II. Casing Cementing Data section by selecting the type of casing and Multi-stage cement shoe. The operator must report the multi-stage cement tool in III. Casing Cementing Data section by selecting the type of casing and Multi-stage cement/DV tool.
- Multiple parallel strings:** An operator should file the Form W-15 as an attachment to the Form W-4, Application for Multiple Completion. An operator may be required to submit multiple Form W-15s to show all data for multiple parallel strings.
- Slurry data:** If cement job exceeds three slurries, continue the list of slurries in the Slurry table in the subsequent Casing Cementing Data box.



RAILROAD COMMISSION OF TEXAS

1701 N. Congress
P.O. Box 12967
Austin, Texas 78701-2967

Form W-15

Rev. 08/2014

CEMENTING REPORT

Cementer: Fill in shaded areas.
Operator: Fill in other items.

OPERATOR INFORMATION	
Operator Name: EP ENERGY E&P COMPANY, L.P.	Operator P-5 No.: 253385
Cementer Name: COMPASS CEMENTING LLC	Cementer P-5 No.: 169789

WELL INFORMATION		
District No.: 7C	County: REAGAN	
Well No.: 0112MH	API No.: 42-383-39738	Drilling Permit No.: 819958
Lease Name: UNIVERSITY CENTRAL	Lease No.: 17575	
Field Name: LIN (WOLFCAMP)	Field No.: 53613750	

I. CASING CEMENTING DATA		
Type of casing: <input type="checkbox"/> Conductor <input type="checkbox"/> Surface <input type="checkbox"/> Intermediate <input type="checkbox"/> Liner <input checked="" type="checkbox"/> Production		
Drilled hole size (in.): 8.5" & 8.75"	Depth of drilled hole (ft.): 18,402'	Est. % wash-out or hole enlargement: 0%
Size of casing in O.D. (in.): 5.5"	Casing weight (lbs/ft) and grade: 17# HCP-110	No. of centralizers used: 82
Was cement circulated to ground surface (or bottom of cellar) outside casing? <input type="checkbox"/> YES <input checked="" type="checkbox"/> NO If no for surface casing, explain in Remarks.	Setting depth shoe (ft.): 18,397'	Top of liner (ft.):
		Setting depth liner (ft.):
Hrs. waiting on cement before drill-out:	Calculated top of cement (ft.): 421'	Cementing date: 01/17/17

SLURRY					
Slurry No.	No. of Sacks	Class	Additives	Volume (cu. ft.)	Height (ft.)
1	705	C/POZ	SEE REMARKS	1967	7724.51
2	1875	H/POZ	SEE REMARKS	2475	10707.78
3					
Total	2580			4442	18432.29

II. CASING CEMENTING DATA			
Type of casing: <input type="checkbox"/> Surface <input type="checkbox"/> Intermediate <input type="checkbox"/> Production <input type="checkbox"/> Tapered production <input type="checkbox"/> Multi-stage cement shoe <input type="checkbox"/> Multiple parallel strings			
Drilled hole size (in.):	Depth of drilled hole (ft.):	Est. % wash-out or hole enlargement:	
Size of casing in O.D. (in.):	Casing weight (lbs/ft) and grade:	No. of centralizers used:	
Tapered string drilled hole size (in.)	Tapered string depth of drilled hole (ft.)		
Upper:	Lower:	Upper:	Lower:
Tapered string size of casing in O.D. (in.)	Tapered string casing weight(lbs/ft) and grade		Tapered string no. of centralizers used
Upper:	Lower:	Upper:	Lower:
Was cement circulated to ground surface (or bottom of cellar) outside casing? <input type="checkbox"/> YES <input type="checkbox"/> NO	Setting depth shoe (ft.):		
Hrs. waiting on cement before drill-out:	Calculated top of cement (ft.):	Cementing date:	

SLURRY					
Slurry No.	No. of Sacks	Class	Additives	Volume (cu. ft.)	Height (ft.)
1					
2					
3					
Total					

III. CASING CEMENTING DATA			
Type of casing: <input type="checkbox"/> Surface <input type="checkbox"/> Intermediate <input type="checkbox"/> Production <input type="checkbox"/> Tapered production <input type="checkbox"/> Multi-stage cement/DV tool <input type="checkbox"/> Multiple parallel strings			
Drilled hole size (in.):	Depth of drilled hole (ft.):	Est. % wash-out or hole enlargement:	
Size of casing in O.D. (in.):	Casing weight (lbs/ft) and grade:	No. of centralizers used:	
Tapered string drilled hole size (in.)	Tapered string depth of drilled hole (ft.)		
Upper:	Lower:	Upper:	Lower:
Tapered string size of casing in O.D. (in.)	Tapered string casing weight(lbs/ft) and grade		Tapered string no. of centralizers used
Upper:	Lower:	Upper:	Lower:
Was cement circulated to ground surface (or bottom of cellar) outside casing? <input type="checkbox"/> YES <input type="checkbox"/> NO	Setting depth tool (ft.):		
Hrs. waiting on cement before drill-out:	Calculated top of cement (ft.):	Cementing date:	

SLURRY					
Slurry No.	No. of Sacks	Class	Additives	Volume (cu. ft.)	Height (ft.)
1					
2					
3					
Total					

CEMENTING TO SQUEEZE, PLUG BACK OR PLUG AND ABANDON

	PLUG #1	PLUG #2	PLUG #3	PLUG #4	PLUG #5	PLUG #6	PLUG #7
Cementing Date							
Size of hole or pipe (in.)							
Depth to bottom of tubing or drill pipe (ft.)							
Cement retainer setting depth (ft.)							
CIBP setting depth (ft.)							
Amount of cement on top of CIBP (ft.)							
Sacks of cement used							
Slurry volume pumped (cu. ft.)							
Calculated top of plug (ft.)							
Measured top of plug, if tagged (ft.)							
Slurry weight (lbs/gal)							
Class/type of cement							
Perforate and squeeze (YES/NO)							

REMARKS

LEAD: CLASS C 50% / POZ 50%, BENTONITE, C45, C47B, CITRIC ACID, CSA 1000, KOL-SEAL, GYP-SEAL. TAIL: CLASS H 50% / POZ 50%, C20, C45, C47B, CSA-1000

CEMENTER'S CERTIFICATE: I declare under penalties prescribed in Sec. 91.143, Texas Natural Resources Code, that I am authorized to make this certification, that the cementing of casing and/or the placing of cement plugs in this well as shown in the report was performed by me or under my supervision, and that the cementing data and facts presented on both sides of this form are true, correct, and complete, to the best of my knowledge. This certification covers cementing data only.

Justin Cortez

COMPASS CEMENTING LLC

Name and title of cementer's representative

Cementing Company

Signature

1930 S US HWY 277

SONORA, TX, 76950

325-387-2940

01/17/2017

Address

City,

State,

Zip Code

Tel: Area Code

Number

Date: mo. day yr.

OPERATOR'S CERTIFICATE: I declare under penalties prescribed in Sec. 91.143, Texas Natural Resources Code, that I am authorized to make this certification, that I have knowledge of the well data and information presented in this report, and that data and facts presented on both sides of this form are true, correct, and complete, to the best of my knowledge. This certification covers all well data.

Derek Motley

WELLSITE SUPERVISOR

Typed or printed name of operator's representative

Title

Signature

P.O. BOX 4660

HOUSTON, TX, 77210-4660

713-997-1160

01/17/2017

Address

City,

State,

Zip Code

Tel: Area Code

Number

Date: mo. day yr.

Instructions for Form W-15, Cementing Report

NOTICE: The Form W-15 must be submitted as an attachment to a Form G-1 (Gas Well Back Pressure Test, Completion or Recompletion Report, and Log), Form W-2 (Oil Well Potential Test, Completion or Recompletion Report, and Log), Form W-3 (Plugging Record), or Form W-4 (Application for Multiple Completion), any time cement is pumped in a wellbore.

- A. **What to file:** An operator should file an original and one copy of the completed Form W-15 for each cementing company used on a well. The cementing of different casing strings on a well by one cementing company may be reported on one form.
The Form W-15 should be filed with the Form W-3, Plugging Record, unless the Form W-3 is signed by the cementing company representative. When reporting dry holes, operators must complete Form W-15, in addition to Form W-3, to show any casing cemented in the hole.
- B. **How to file:** An oil and gas completion report and Form W-15 may be filed online using the Commission's Online System (<https://webapps.rrc.state.tx.us/security/login.do>) or a paper copy of the form may be mailed to the Commission in Austin (P.O. Box 12967, Austin, Texas 78711-2967).
- C. **Surface casing:** An operator must set and cement sufficient surface casing to protect all usable-quality water strata, as defined by the Groundwater Advisory Unit in Austin. Sufficient cement shall be used to fill the annular space outside the casing from the shoe to the ground surface or to the bottom of the cellar. Before drilling a well, an operator must obtain a letter from the Groundwater Advisory Unit stating the protection depth. Surface casing should not be set deeper than 200 feet below the specified depth without prior approval from the Commission.
To plug and abandon a well, operators must use only cementers approved by the Commission's Director of Field Operations in accordance with SWR 14 ([http://info.sos.state.tx.us/pls/pub/readtac\\$ext.TacPage?sl=R&app=9&p_dir=&p_rloc=&p_tloc=&p_ploc=&pg=1&p_tac=&ti=16&pt=1&ch=3&rl=14](http://info.sos.state.tx.us/pls/pub/readtac$ext.TacPage?sl=R&app=9&p_dir=&p_rloc=&p_tloc=&p_ploc=&pg=1&p_tac=&ti=16&pt=1&ch=3&rl=14)). Cementing companies, service companies, or operators can qualify as approved cementers by demonstrating that they are able to mix and pump cement in compliance with Commission rules and regulations.
- D. **Estimated % wash-out:** If the estimated % wash-out is less than 20% (or 30% along the Gulf Coast), provide supporting documentation such as a caliper log to show how the estimated % wash-out was obtained.
- E. **Multi-stage cement:** An operator must report the multi-stage cement shoe in II. Casing Cementing Data section by selecting the type of casing and Multi-stage cement shoe. The operator must report the multi-stage cement tool in III. Casing Cementing Data section by selecting the type of casing and Multi-stage cement/DV tool.
- F. **Multiple parallel strings:** An operator should file the Form W-15 as an attachment to the Form W-4, Application for Multiple Completion. An operator may be required to submit multiple Form W-15s to show all data for multiple parallel strings.
- G. **Slurry data:** If cement job exceeds three slurries, continue the list of slurries in the Slurry table in the subsequent Casing Cementing Data box.

Tracking No.: 177075

This facsimile L-1 was generated electronically from data submitted to the RRC.

Instructions

When to File Form L-1:

- with Forms G-1, W-2, and GT-1 for new and deepened gas, oil, and geothermal wells
- with Form W-3 for plugged dry holes
- when sending in a log which was held under a request for confidentiality and the period for confidentiality has not yet expired.

When is Form L-1 NOT required:

- with Forms W-2, G-1, and GT-1 filed for injection wells, disposal wells, water supply wells, service wells, re-test wells, re-classifications, and plugbacks of oil, gas or geothermal wells
- with Form W-3 for plugging of other than a dry hole

Where to File Form L-1:

- with the appropriate Commission district office

Filling out Form L-1:

- Section I and the signature section must be filled out for all wells
- complete only the appropriate part of Section II

Type of log required:

- any wireline survey run for the purpose of obtaining lithology, porosity, or resistivity information
- no more than one such log is required but it must be of the subject well
- if such log is NOT run on the subject well, do NOT substitute any other type of log; just select Section II, Part A below

SECTION I. IDENTIFICATION

Operator Name: EP ENERGY E&P COMPANY, L.P.	District No. 7C	Completion Date: 01/17/2017
Field Name LIN (WOLFCAMP)	Drilling Permit No. 819958	
Lease Name UNIVERSITY CENTRAL	Lease/ID No. 17575	Well No. 0112MH
County REAGAN	API No. 42- 383-39738	

SECTION II. LOG STATUS (Complete either A or B)

☐ A. BASIC ELECTRIC LOG NOT RUN☒ B. BASIC ELECTRIC LOG RUN. (Select one)

- ☒ 1. Confidentiality is requested and a copy of the header for each log that has been run on the well is attached.
- ☐ 2. Confidentiality already granted on basic electric log covering this interval (applicable to deepened wells only).
- ☐ 3. Basic electric log covering this interval already on file with Commission (applicable to deepened wells only).
- ☐ 4. Log attached to (select one):

☐ (a) Form L-1 (this form). If the company/lease name on log is different from that shown in Section I, please enter name on log here: _____

Check here if attached log is being submitted after being held confidential. ☐

☐ (b) Form P-7, Application for Discovery Allowable and New Field Designation.

☐ (c) Form W-4, Application for Multiple Completion:

Lease or ID No(s). _____

Well No(s). _____

Rita Martinez-Dean

Signature

EP ENERGY E&P COMPANY, L.P.

Name (print)

Associate Analyst

Title

(713) 997-6212

Phone

07/31/2017

Date

-FOR RAILROAD COMMISSION USE ONLY-



Gamma Log

MD
1":100'

Company: EP Energy E&P Company
Well Name: University Central 0112 MH
API: 42-383-39738-0000
County/Parish: Reagan
State/Prov: Texas
Country: USA
Job #: B0023

Company: EP Energy E&P Company
Well Name: University Central 0112 MH
API: 42-383-39738-0000
County/Parish: Reagan
State or Prov: Texas
Country: USA
Job number: B0023
Field: Wolfcamp
Rig Identification: Nabors 888
Survey Company: Nabors Drilling Solutions
MWD Operator 1 Devin Williams
MWD Operator 2 Remote Operating Center
Geologist Lauren Robinson
Drilling Engineer Ryan Williams
Coordinates N: 544369.830 E: 1577138.010

Log measurements: GR, ROP

Depth measured from: Drill Floor - 27 ft

Maximum temperature: 176 F

Depth

Date

Start: 990 ft

1/8/2017

End:

Casing Depth Size

Surface: 957 ft 9 5/8"

Intermediate:

Mud type: Oil based

Density: 9.00 ppg

Viscosity: 58

Rm:

Rmf:

Rmc:

Elevations

KB2965.00 ft

DF: 27 ft

GL2938.00 ft

Run	Bit Size	Offsets		Depths		Dates	
		Gamma	Survey	Start	End	Start	End
1	8 3/4"	54.00 ft	55.00 ft	957 ft	7,325 ft	1/1/2017	1/3/2017
2	8 3/4"	56.00 ft	57.00 ft	7,325 ft	7,767 ft	1/3/2017	1/3/2017
3	8 1/2"	54.00 ft	55.00 ft	7,767 ft	18,025 ft	1/3/2017	1/7/2017
4							
5							
6							
7							
8							
9							
10							

RAILROAD COMMISSION OF TEXAS

**1701 N. Congress
P.O. Box 12967
Austin, Texas 78701-2967**

Form P-16

Page 1

Rev. 01/2016

Acreage Designation

SECTION I. OPERATOR INFORMATION

Operator Name:	Operator P-5 No.:
Operator Address:	

SECTION II. WELL INFORMATION

District No.:	County:	Purpose of Filing: <input type="checkbox"/> Drilling Permit Application (Form W-1) <input type="checkbox"/> Completion Report (Form G-1/W-2)
Well No.:	API No.:	
Total Lease Acres:	Drilling Permit No.:	
Lease Name:	Lease No.:	
Field Name:	Field No.:	

Filer is the owner or lessee, or has been authorized by the owner or lessee, of all or an undivided portion of the mineral estate under each tract for which filer is listed as operator below. For all leases operated by other entities, the number of assigned acres shown are reflected on current Commission records or the filer has been authorized by the current operator to change the assigned acreage of that operator as shown below.

SECTION III. LISTING OF ALL WELLS IN THE APPLIED-FOR FIELD ON THE SAME ACREAGE AS THE LEASE, POOLED UNIT, OR UNITIZED TRACT DESIGNATED IN SECTION II ABOVE BY FILER

[illegible]

Total Well Count >		< A. Total Assigned Horiz. Acreage		< C. Total Assigned Acreage
		< Total Remaining Horiz. Acreage		< Total Remaining Acreage
		< B. Total Assigned Vert./Dir. Acreage		
		< Total Remaining Vert./Dir. Acreage		

SECTION IV. REMARKS / PURPOSE OF FILING (see instructions)

SECTION 104. REPAIRS, 104.002 OF RULES (SEE INSTRUCTIONS)

Attach Additional Pages As Needed. ☐ No additional pages ☐ Additional Pages: _____ (No. of additional pages)

CERTIFICATION: I declare under penalties prescribed in Sec. 91.143, Texas Natural Resources Code, that this report was prepared by me or under my supervision or direction, that I am authorized to make this report, and that the information contained in this report is true, correct, and complete to the best of my knowledge.

Signature	Name and title (type or print)	Email (include email address <i>only</i> if you affirmatively consent to its public release)
-----------	--------------------------------	----------------------------------------------------------------------------------------------

Address	City	State	Zip Code	Tel: Area Code	Number	Date: mo. day yr.
---------	------	-------	----------	----------------	--------	-------------------

GROUNDWATER PROTECTION DETERMINATION

Form GW-2



Groundwater Advisory Unit

Date Issued: 23 September 2016**GAU Number:** 160580**Attention:** EP ENERGY E&P COMPANY,
ATTN JOSEPH ARAIZA
HOUSTON, TX 77210**Operator No.:** 253385**API Number:**
County: REAGAN
Lease Name: University Central
Lease Number: 17575
Well Number: 0112MH
Total Vertical Depth: 8999
Latitude: 31.156420
Longitude: -101.685327
Datum: NAD27**Purpose:** New Drill**Location:** Survey-University Lands; Block-1; Section-12

To protect usable-quality groundwater at this location, the Groundwater Advisory Unit of the Railroad Commission of Texas recommends:

The interval from the land surface to 20 feet below the base of the Cretaceous-age beds must be protected. The base of the Cretaceous is estimated to occur at a depth of 750 feet.

This recommendation is applicable to all wells within a radius of 200 feet of this location.

Note: Unless stated otherwise, this recommendation is intended to apply only to the subject well and not for area-wide use. This recommendation is for normal drilling, production, and plugging operations only. It does not apply to saltwater disposal operation into a nonproductive zone (RRC Form W-14).

This determination is based on information provided when the application was submitted on 09/20/2016. If the location information has changed, you must contact the Groundwater Advisory Unit, and submit a new application if necessary. If you have questions, please contact us at 512-463-2741 or gau@rrc.texas.gov.

Groundwater Advisory Unit, Oil and Gas Division

Form GW-2 P.O. Box 12967 Austin, Texas 78771-2967 512-463-2741 Internet address: www.rrc.texas.gov
Rev. 02/2014

Surface Hole Location (SHL Sec. 12)
Latitude: 31.156574° N
Longitude: 101.685727° W
X=1873585.79
Y=10386946.89
Elev.=2936'
310° FNL @ 684' FWL

Surface Hole Location (SHL Sec. 12)
Latitude: 31.158420° N
Longitude: 101.685327°W
X=1577118.01
Y=544370.25
Elev.=2936'
310° FNL & 684° FWL

First Take Point (FTP Sec. 12)
Latitude: 31.155787°N
Longitude: 101.686158° W
X=1576855.46
Y=544143.41
5.42° FNL & 426° FWL

Last Take Point (LTP Sec.1)
Latitude: 31.128604° N
Longitude: 101.586544° W
X=1576614.25
Y=534259.28
153' FSL & 386' FWL

Bottom Hole Location
(BHL Sec.1)
Latitude: 31.128321° N
Longitude: 101.086528° W
X=1576618.09
Y=534156.38
60° FSL & 302° FWL

NOTE: This Plat does not, in anyway represent a "Boundary Survey", and does not comply with the current T.B.P.L.S. Minimum Standards of Procedures for Boundary Survey. Acreage shown herein were furnished by others. The information contained on this plat is intended for the sole use of BP ENERGY ESP COMPANY, L.P.

NOTE: Bearings and coordinates refer to the Texas Coordinate System of 1907, Central Zone (4203), as observed by GPS observations.

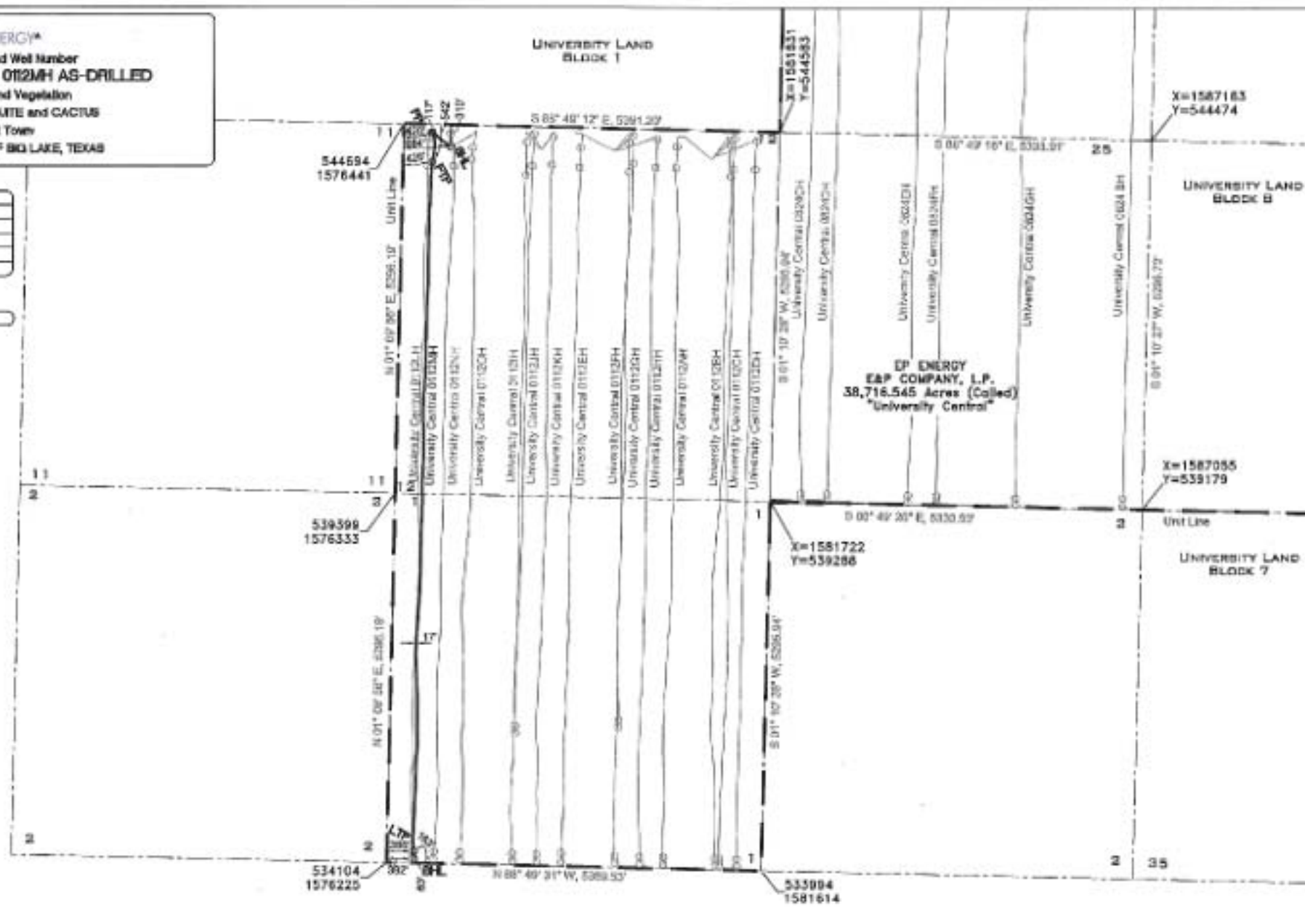
I, Dave Brian Crim do hereby certify that this plot was prepared from a completion report provided by the client.

DAVE BRIAN CRIM
REGISTERED PROFESSIONAL LAND SURVEYOR
TEXAS REGISTRATION NO. 6665

EP ENERGY[®]
 Lease Name and Well Number
UNIVERSITY CENTRAL 0112MH AS-DRILLED
 Topography and Vegetation
SCATTERED MESQUITE and CACTUS
 Nearest Town
13.5 MILES WEST OF BIG LAKE, TEXAS

	Unit	Boundary	Distance
SHL	310'	FNL & 684'	FWL
FP	117'	FNL & 420'	FWL
FTP	543'	FNL & 426'	FWL
LTP	163'	FSL & 386'	FWL
BRL	60'	FSL & 392'	FWL

CIP-LTP 1896'



KSA
140 E. Tyler Street, Suite 400
Lombard, Texas 75041
T. 936.214-7788 F. 936.236-0779
www.khsa.com
TUPES 1789/822, 823, 1001400

EP ENERGY E&P COMPANY, L.P.

EPEN 486

University Central 0112MH
Block 1, Section 12 & 1
Reagan County, Texas