

0 500 1000
1" = 1000 FEET

NAD 83 (HPGN) GRID
TEXAS NORTH CENTRAL ZONE

LEGEND

- SURVEY LINE
- LEASE LINE
- FOUND CONCRETE MONUMENT
- CALCULATED CORNER

SURFACE HOLE LOCATION

260' FNL 886' FWL LEASE
1060' FSL 1755' FEL SECTION 19

NAD 83 (HPGN)
Y = 6,845,893.12 X = 817,013.75
LAT: 32°23'30.09" N LONG: 102°13'52.45" W
LAT: 32.391690° N LONG: 102.231236° W

NAD 27
Y = 296,603.33 X = 540,193.76
LAT: 32°23'29.71" N LONG: 102°13'50.89" W
LAT: 32.391585° N LONG: 102.230802° W

PENETRATION POINT

36' FNL 1105' FWL LEASE
1284' FSL 1536' FEL SECTION 19

NAD 83 (HPGN)
Y = 6,846,161.14 X = 817,176.56
LAT: 32°23'32.79" N LONG: 102°13'50.66" W
LAT: 32.392442° N LONG: 102.230740° W

NAD 27
Y = 296,869.79 X = 540,359.12
LAT: 32°23'32.42" N LONG: 102°13'49.10" W
LAT: 32.392338° N LONG: 102.230306° W

FIRST TAKE POINT

346' FNL 1135' FWL LEASE
974' FSL 1506' FEL SECTION 19

NAD 83 (HPGN)
Y = 6,845,865.76 X = 817,275.60
LAT: 32°23'29.91" N LONG: 102°13'49.39" W
LAT: 32.391641° N LONG: 102.230385° W

NAD 27
Y = 296,573.47 X = 540,455.33
LAT: 32°23'29.53" N LONG: 102°13'47.82" W
LAT: 32.391536° N LONG: 102.229951° W

LAST TAKE POINT

103' FSL 1093' FWL LEASE
103' FSL 1549' FEL SECTION 33

NAD 83 (HPGN)
Y = 6,834,689.09 X = 819,824.17
LAT: 32°21'40.27" N LONG: 102°13'15.07" W
LAT: 32.361187° N LONG: 102.220852° W

NAD 27
Y = 285,372.86 X = 542,897.01
LAT: 32°21'39.89" N LONG: 102°13'13.51" W
LAT: 32.361080° N LONG: 102.220419° W

BOTTOM HOLE LOCATION

8' FSL 1089' FWL LEASE
8' FSL 1553' FEL SECTION 33

NAD 83 (HPGN)
Y = 6,834,595.65 X = 819,841.23
LAT: 32°21'39.35" N LONG: 102°13'14.83" W
LAT: 32.360931° N LONG: 102.220786° W

NAD 27
Y = 285,279.26 X = 542,913.18
LAT: 32°21'38.97" N LONG: 102°13'13.27" W
LAT: 32.360825° N LONG: 102.220353° W

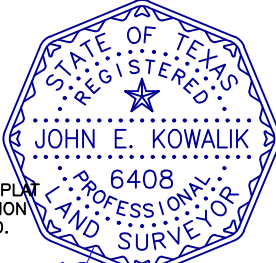
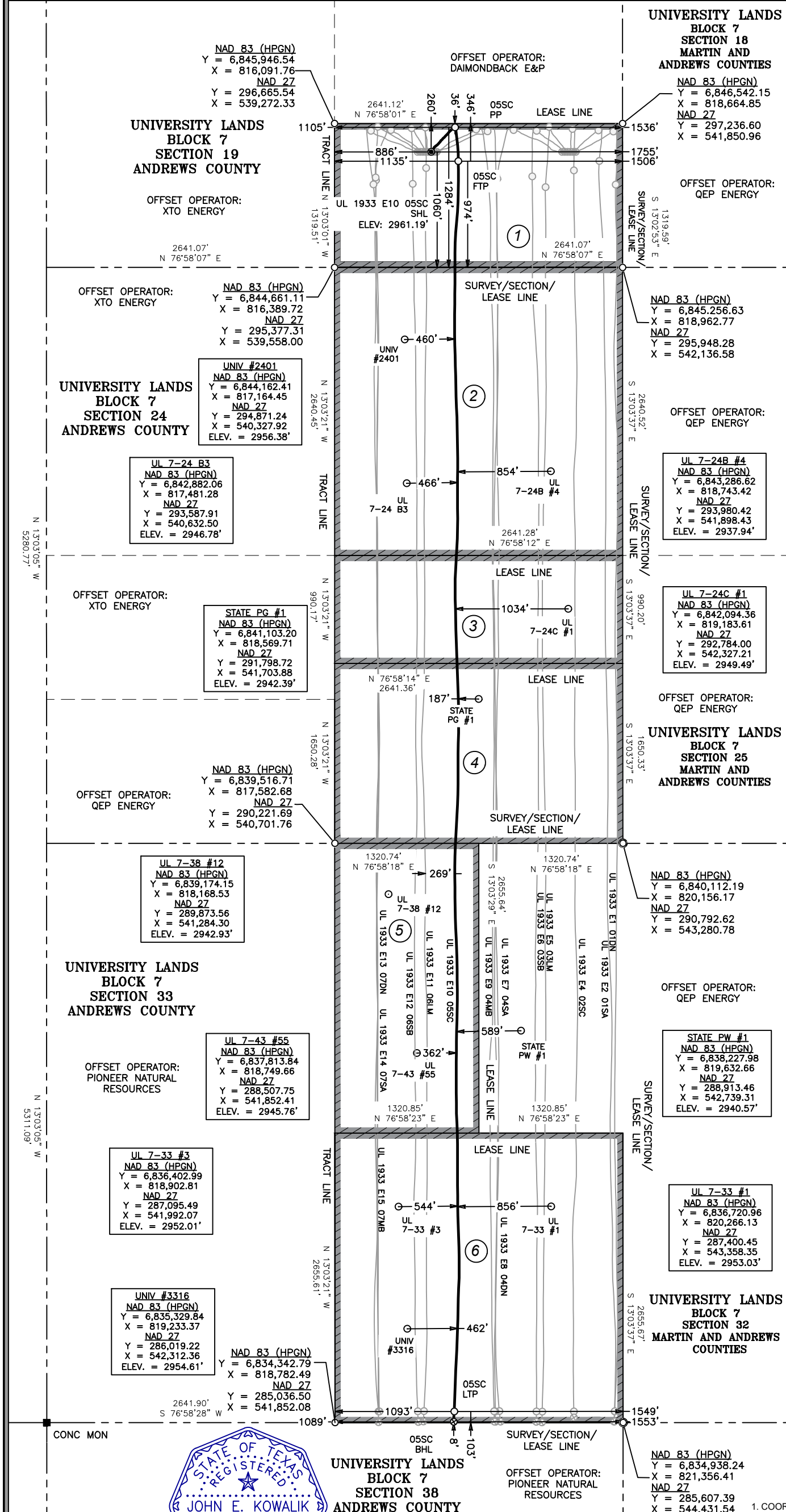
LEASE/CALLED ACREAGE TABLE	LATERAL LENGTH
LEASE 1 #107149	80.00 ACRES 974.93'
LEASE 2 #107151	160.00 ACRES 2641.08'
LEASE 3 #114999	60.00 ACRES 990.76'
LEASE 4 #100453	100.00 ACRES 1651.16'
LEASE 5 #100454	80.463 ACRES 2656.35'
LEASE 6 #107162	160.925 ACRES 2554.14'
TOTAL	641.388 ACRES N/A

GENERAL NOTES

- COORDINATES SHOWN ARE BASED ON TEXAS COORDINATE SYSTEM OF NAD 83 (HPGN) "TEXAS NORTH CENTRAL ZONE", AND BASED ON "GLASS" NGS MONUMENT (Y = 6,817,164.36, X = 834,131.39)
- VERTICAL DATUM IS NAVD 88
- LATITUDE AND LONGITUDE ARE NAD 83 (HPGN) AS SHOWN
- AREA, DISTANCES, AND COORDINATES ARE "GRID"
- UNITS ARE UNITED STATES SURVEY FOOT
- ALL LEASE AND TRACT INFORMATION SHOWN HERE ON IS DONE SO BY LIMITED DEED RECORD INFORMATION ONLY. ALL ACREAGES SHOWN ARE BY DEED AND LEASE CALL, EXCEPT WHERE NOTED. THIS IS NOT IN ANY WAY A "BOUNDARY SURVEY".



DATE: 05-25-2021
 DRAWN BY: RS
 CHECKED BY: JK
 FIELD CREW: N/A
 PROJECT NO: 2020060985
 SCALE: 1" = 1000'
 SHEET: 1 OF 1
 REVISION: 0



I HEREBY STATE THAT THIS PLAT SHOWS THE SUBJECT LOCATION AS STAKED ON THE GROUND.

JOHN E. KOWALIK
REGISTERED PROFESSIONAL LAND SURVEYOR
STATE OF TEXAS NO. 6408

PLAT OF:
A PRE-COMPLETION AS-DRILL WELL LOCATION FOR:
QEP ENERGY COMPANY

UL 1933 E10 05SC

SITUATED IN THE UNIVERSITY LANDS, BLOCK 7, SECTION 19, THE UNIVERSITY LANDS, BLOCK 7, SECTION 24, AND THE UNIVERSITY LANDS SURVEY, BLOCK 7, SECTION 33 AND BEING APPROXIMATELY 17.9 MILES EAST OF ANDREWS IN ANDREWS COUNTY, TEXAS.

FSC INC
 SURVEYORS+ENGINEERS
 550 Bailey Ave., 205 - Fort Worth, TX 76107
 Ph: 817.349.9800 - Fax: 979.732.5271
 TBPE Firm 17957 | TBPLS Firm 10193887
 www.fscinc.net