

FINAL WELLBORE SCHEMATIC

CONFIDENTIAL

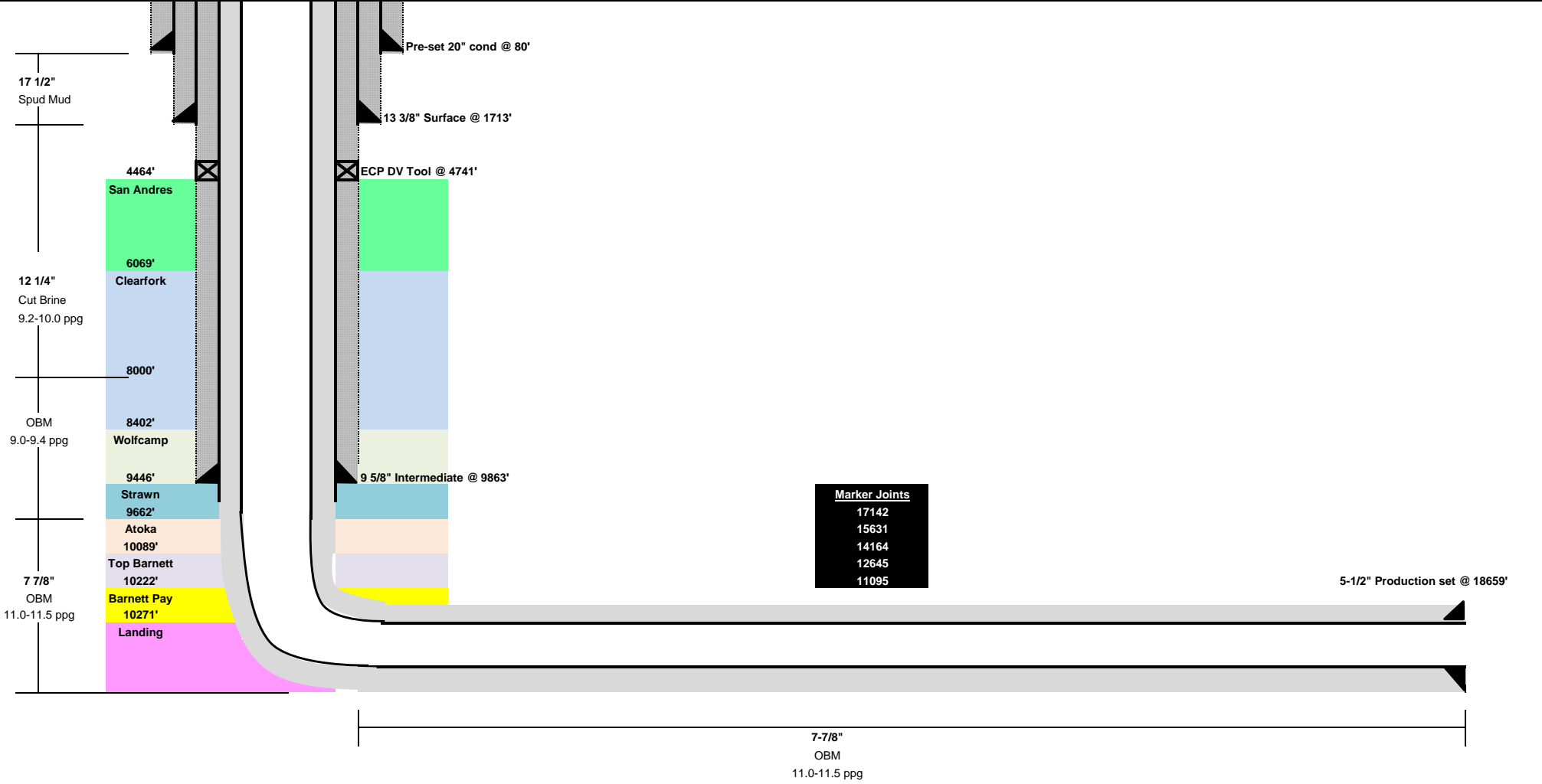


WELL NAME: UL G 1-18 A 1H
FORMATION: Barnett
COUNTY, ST: Andrews, TX
SHL: 624' FSL, 1386' FWL, Sec. 7, Blk 1, ULS
BHL: 2620' FNL, 660' FWL, Sec. 19, Blk 1, ULS

DRILLING MGR: Jason L. Kincaid
OPS. MGR: Brian Zachry
GEO MGR: Drew Bergman
GL: 3170' **RKB:** 3195'
KB: 25'

	CASING DETAILS								CEMENT DETAILS						
	Conn	O.D.	Wt	Grade	Hole	Start	End	TD	Sx	Yield	ft³	Density	TOC	Type	
SURFACE	BTC	13 3/8"	54.5	J-55	17.5	0	1713	1740	1100	1.98	2178	12.8	Circ. 140	Lead	
									400	1.6	640	13.9		Tail	
									200	1.28	256	14.2	Circ. 105	1st Tail	
INTERMEDIATE	BTC	9 5/8"	40	HCL-80	12.25	0	9863	9900	1200	2.65	3180	11	Circ. 165	2nd Lead	
									2800	2.65	7420	11			
									200	1.28	256	14.2	Circ. 105	1st Tail	
PRODUCTION Interra Toe Sleeve PBD	GBCD	5 1/2"	20	HP110	7.875	0	18659	18661	565	1.28	723	10.5	Circ 170	Lead	
									18565	2.65	4108	13.2		Tail	
									18612						

API #: 42-003-48172
SPUD: 3/1/20 6:30 AM
RIG DOWN:
TD:



Drilling Fluids Buckeye	Build Section Tally	Tool PDM	Lateral Section Tally	Tool PDM	Liner System None	Cement Silverzone	AFE No. 20106	Permit No. 856965	API 42-003-48172	Prepared By: JLK Date: 21-May-21
-----------------------------------	-------------------------------	--------------------	---------------------------------	--------------------	-----------------------------	-----------------------------	-------------------------	-----------------------------	----------------------------	---