



RAILROAD COMMISSION OF TEXAS

Form W-2

1701 N. Congress
P.O. Box 12967
Austin, Texas 78701-2967

Status: Approved
Date: 08/05/2015
Tracking No.: 124761

OIL WELL POTENTIAL TEST, COMPLETION OR RECOMPLETION REPORT, AND LOG

OPERATOR INFORMATION

Operator Name: GREYSTONE OIL & GAS, LLP **Operator No.:** 333767
Operator Address: 1616 S VOSS RD STE 400 HOUSTON, TX 77057-0000

WELL INFORMATION

API No.: 42-003-45935 **County:** ANDREWS
Well No.: 1H **RRC District No.:** 08
Lease Name: UNIVERSITY FV **Field Name:** EMMA (DEVONIAN)
RRC Lease No.: 46585 **Field No.:** 28899166
Location: Section: 31, Block: 9, Survey: UL, Abstract: U267

Latitude: 32.13568 **Longitude:** -102.60602
This well is located 13.1 **miles in a** SW **direction from** ANDREWS, **which is the nearest town in the county.**

FILING INFORMATION

Purpose of filing: Initial Potential
Type of completion: New Well
Well Type: Producing **Completion or Recompletion Date:** 08/23/2014

Type of Permit	Date	Permit No.
Permit to Drill, Plug Back, or Deepen	07/09/2014	778161
Rule 37 Exception		
Fluid Injection Permit		
O&G Waste Disposal Permit		
Other:		

COMPLETION INFORMATION

Spud date: 05/04/2014 **Date of first production after rig released:** 08/23/2014
Date plug back, deepening, recompletion, or drilling operation commenced: 05/04/2014 **Date plug back, deepening, recompletion, or drilling operation ended:** 06/27/2014
Number of producing wells on this lease in this field (reservoir) including this well: 1 **Distance to nearest well in lease & reservoir (ft.):** 0.0
Total number of acres in lease: 241.53 **Elevation (ft.):** 3158 GR
Total depth TVD (ft.): 10642 **Total depth MD (ft.):** 14557
Plug back depth TVD (ft.): 10642 **Plug back depth MD (ft.):** 14518
Was directional survey made other than inclination (Form W-12)? Yes **Rotation time within surface casing (hours):** 77.5
Is Cementing Affidavit (Form W-15) attached? Yes
Recompletion or reclass? No **Multiple completion?** No
Type(s) of electric or other log(s) run: Combo of Induction/Neutron/Density/Sonic
Electric Log Other Description: OPEN HOLE ELECTRIC LOG
Location of well, relative to nearest lease boundaries **Off Lease :** No
of lease on which this well is located: 300.0 **Feet from the** South **Line and**
330.0 **Feet from the** East **Line of the**
UNIVERSITY FV **Lease.**

FORMER FIELD (WITH RESERVOIR) & GAS ID OR OIL LEASE NO.

Field & Reservoir **Gas ID or Oil Lease No.** **Well No.** **Prior Service Type**

W2: N/A

PACKET: N/A

FOR NEW DRILL OR RE-ENTRY, SURFACE CASING DEPTH DETERMINED BY:

GAU Groundwater Protection Determination **Depth (ft.):** 1550.0 **Date:** 03/05/2014
SWR 13 Exception **Depth (ft.):**

INITIAL POTENTIAL TEST DATA FOR NEW COMPLETION OR RECOMPLETION

Date of test: 09/11/2014 **Production method:** Pumping
Number of hours tested: 24 **Choke size:** 1
Was swab used during this test? No **Oil produced prior to test:** 806.00

PRODUCTION DURING TEST PERIOD:

Oil (BBLs): 121.00 **Gas (MCF):** 7
Gas - Oil Ratio: 57 **Flowing Tubing Pressure:** 110.00
Water (BBLs): 1307

CALCULATED 24-HOUR RATE

Oil (BBLs): 121.0 **Gas (MCF):** 7
Oil Gravity - API - 60.: 44.0 **Casing Pressure:** 50.00
Water (BBLs): 1307

CASING RECORD

Row	Type of Casing	Casing Size (in.)	Hole Size (in.)	Setting Depth (ft.)	Multi - Stage Depth (ft.)	Multi - Shoe Depth (ft.)	Cement Class	Cement Amount (sacks)	Slurry Volume (cu. ft.)	Top of Cement (ft.)	TOC Determined By
1	Surface	13 3/8	17 1/2	1758			C	1575	2595.0	0	Circulated to Surface
2	Intermediate	9 5/8	12 1/4	5830	3500		C	1736	3700.0	0	Circulated to Surface
3	Intermediate	9 5/8	12 1/4	5830			C	970	1973.0	3500	Temperature Survey
4	Intermediate	7	8 3/4	10403	9352		C & H	1250	1576.0	2404	Temperature Survey
5	Intermediate	7	8 3/4	10403			C & H	249	345.0	9352	Temperature Survey

LINER RECORD

Row	Liner Size (in.)	Hole Size (in.)	Liner Top (ft.)	Liner Bottom (ft.)	Cement Class	Cement Amount (sacks)	Slurry Volume (cu. ft.)	Top of Cement (ft.)	TOC Determined By
1	4 1/2	6 1/8	9988	14557	H	600	746.0	9988	Temperature Survey

TUBING RECORD

Row	Size (in.)	Depth Size (ft.)	Packer Depth (ft.)/Type
1	2 7/8	9740	0 / NONE

PRODUCING/INJECTION/DISPOSAL INTERVAL

Row	Open hole?	From (ft.)	To (ft.)
1	No	L1 10880	14477.0

ACID, FRACTURE, CEMENT SQUEEZE, CAST IRON BRIDGE PLUG, RETAINER, ETC.

Was hydraulic fracturing treatment performed? Yes

Is well equipped with a downhole actuation sleeve? No

If yes, actuation pressure (PSIG):

Production casing test pressure (PSIG) prior to hydraulic fracturing treatment: 9250

Actual maximum pressure (PSIG) during hydraulic fracturing: 8127

Has the hydraulic fracturing fluid disclosure been reported to FracFocus disclosure registry (SWR29)? No

Row	Type of Operation	Amount and Kind of Material Used	Depth Interval (ft.)	
1	Fracture	FRAC W/ 3,166,445 G X-LINK GEL & 2,514,280 20/40 MESH RC SAND	10880	14477

FORMATION RECORD

Formations	Encountered	Depth TVD (ft.)	Depth MD (ft.)	Is formation isolated?	Remarks
YATES	Yes	2867.0	2867.0	Yes	
SEVEN RIVERS	Yes	3129.0	3129.0	Yes	
QUEEN	Yes	3812.0	3812.0	Yes	
GRAYBURG	Yes	4116.0	4116.0	Yes	
SAN ANDRES - CO2 FLOOD, HIGH FLOWS, H2S, CORROSIVE	Yes	4399.0	4399.0	Yes	
HOLT	No			No	NOT PRESENT
GLORIETA	Yes	5360.0	5360.0	Yes	
TUBB	Yes	6729.0	6729.0	Yes	
CLEARFORK	Yes	5565.0	5565.0	Yes	
PERMIAN DETRITAL	Yes	8634.0	8633.0	Yes	
LEON	No			No	NOT PRESENT
WICHITA ALBANY	No			No	NOT PRESENT
SPRABERRY	No			No	NOT PRESENT
DEAN	No			No	NOT PRESENT
WOLFCAMP	Yes	8286.0	8285.0	Yes	
CANYON	Yes	8913.0	8911.0	Yes	
PENNSYLVANIAN	Yes	8820.0	8818.0	Yes	
MCKEE	Yes	9354.0	9353.0	Yes	CHANGE MCKEE TO BARNETT
STRAWN	Yes	9104.0	9103.0	Yes	
FUSSELMAN	Yes	10243.0	10240.0	Yes	CHANGE FUSSELMAN TO WOODFORD
DEVONIAN	Yes	10383.0	10378.0	Yes	
SILURIAN	No			No	NOT PRESENT
ELLENBURGER	No			No	NOT PRESENT

Do the producing interval of this well produce H2S with a concentration in excess of 100 ppm (SWR 36)? No

Is the completion being downhole commingled (SWR 10)? No

REMARKS

RRC REMARKS

PUBLIC COMMENTS:

[RRC Staff 2015-05-13 17:18:21.936] EDL=4140 feet, max acres=200

CASING RECORD :

TUBING RECORD:

PRODUCING/INJECTION/DISPOSAL INTERVAL :

ACID, FRACTURE, CEMENT SQUEEZE, CAST IRON BRIDGE PLUG, RETAINER, ETC. :

POTENTIAL TEST DATA:

OPERATOR'S CERTIFICATION

Printed Name: Lindsay Barnes

Title:

Telephone No.: (832) 333-4004

Date Certified: 07/08/2015

Cementer: Fill in shaded areas.
Operator: Fill in other items.

**RAILROAD COMMISSION OF TEXAS
Oil and Gas Division**

Form W-15
Cementing Report
Rev. 4/28/2014
483-045

1. Operator's Name (As shown on Form P-5, Organization Report) GREYSTONE OIL & GAS LLP	2. RRC Operator No. 333767	3. RRC District No. 08	4. County of Well Site ANDREWS
5. Field Name (Wildcat or exactly as shown on RRC Records) Emma (Devonian)	6. API No. 42-003-45935	7. Drilling Permit No. 778161	
8. Lease Name UNIVERSITY FV	9. Rule 37 Case No.	10. Oil Lease/Gas ID No.	11. Well No. 1H

CASING CEMENTING DATA:		SURFACE CASING	INTER-MEDIATE CASING	PRODUCTION CASING		MULTI-STAGE CEMENTING PROCESS	
				Single String	Multiple Parallel Strings	Tool	Shoe
12. Cementing Date		5-11-14					
13. • Drilled Hole Size		17-1/2					
• Est. % wash or hole enlargement		100					
14. Size of casing (in. O.D.)		13-3/8"					
15. Top of liner (ft.)		0					
16. Setting depth (ft.)		1758					
17. Number of centralizers used		6					
18. Hrs. Waiting on cement before drill-out		77.5					
1 st Slurry	19. API cement used: No. of sacks ▶	1275					
	Class ▶	C					
	Additives ▶	REMARKS					
2 nd Slurry	No. of sacks ▶	300					
	Class ▶	C					
	Additives ▶	REMARKS					
3 rd Slurry	No. of sacks ▶						
	Class ▶						
	Additives ▶						
1 st	20. Slurry pumped: Volume (cu. ft.) ▶	2193					
	Height (ft.) ▶	3157					
2 nd	Volume (cu. ft.) ▶	402					
	Height (ft.) ▶	579					
3 rd	Volume (cu. ft.) ▶						
	Height (ft.) ▶						
Total	Volume (cu. ft.) ▶	2595					
	Height (ft.) ▶	3736					
21. Was cement circulated to ground surface (or bottom of cellar) outside casing ?		yes					
(22).Remarks #1- .005 LBS/SK STATIC FREE - 2% CALCIUM CHLORIDE - .25 LBS/SK CELLO FLAKE - 3 LBS/SK LCM-1 - .005 GPS FP-6L - 2% BENTONITE Remarks #2 - .005 LBS/SK STATIC FREE - 1% CALCIUM CHLORIDE - .005 GPS FP-6L Remarks #3							

CEMENTING TO PLUG AND ABANDON	PLUG#1	PLUG #2	PLUG #3	PLUG #4	PLUG #5	PLUG #6	PLUG #7	PLUG #8
23. Cementing date								
24. Size of hole or pipe plugged (in.)								
25. Depth to bottom of tubing or drill pipe (ft.)								
26. Sacks of cement used (each plug)								
27. Slurry volume pumped (cu. Ft.)								
28. Calculated top of plug (ft.)								
29. Measured top of plug, if tagged (ft.)								
30. Slurry wt. (lb/gal)								
31. Type cement								

CEMENTER'S CERTIFICATE: I declare under penalties in Sec. 91.143, Texas Natural Resources Code, that I am authorized to make this Certification, that the cementing of casing and/or the placing of cement plugs in this well as shown in the report was performed by me or under my Supervision, and that the cementing data and facts presented on both sides of this form are true, correct, and complete, to the best of my knowledge. This certification covers cementing data only.

Don McDaniel-Field Specialist
Name and title of cementer's representative

BakerHughes OilField Ops
Cementing Company

Don McDaniel
Signature

2929 Allen Parkway Suite 2100
Address

Houston, Texas 77019
City, State, Zip Code

(713)439-8600
Tel. Area Code Number

5-11-14
Date: mo. Day yr.

OPERATOR'S CERTIFICATE: I declare under penalties prescribed in Sec. 91.143, Texas Natural Resources Code, that I am authorized to make this Certification, that I have knowledge of the well data and information presented in this report, and that data and facts presented on both sides of this form Are true, correct, and complete, to the best of my knowledge. This certification covers all well data.

Lindsay Barnes
Typed or printed name of operator's representative

Engineering Technician
Title

Lindsay Barnes
Signature

1616 S Vassar #400
Address

Houston, TX 77057
City, State, Zip Code

832.333.4004
Tel. area code number

05/21/14
Date: mo. day yr.

Instructions to Form W-15, Cementing Report

IMPORTANT: Operators and cementing companies must comply with the requirements of the Commission's Statewide Rules 8 (Water Protection), 13 (Casing, Cementing, Drilling, and Completion), and 14 (Well Plugging). For offshore operations, see the requirements of Rule 13 (c).

- A. What to file. An operator should file an original and one copy of the completed Form W-15 for each cementing company used on a well. The cementing of different casing strings on a well by one cementing company may be reported on one form. Form W-15 should be filed with the following.
- An initial oil or gas completion report, Form W-2 or G-1, as required by Statewide or special field rates;
 - Form W-4, Application for Multiple Completion, if the well is a multiple parallel casing completion; and
 - Form W-3, Plugging Record, unless the W-3 is signed by the cementing company representative. When reporting dry holes, operators must complete Form W-15, in addition to Form W-3, to show any casing cemented in the hole.
- B. Where to file. The appropriate Commission District Office for the county in which the well is located.
- C. Surface Casing. An operator must set and cement sufficient surface casing to protect all usable-quality water strata, as defined by the Texas Department of Water Resources, Austin. Before drilling a well in any field or area in which no field rules are in effect or in which surface casing requirements are not specified in the applicable rules, an operator must obtain a letter from the Department of Water Resources stating the protection depth. Surface casing should not be set deeper than 200 feet below the specified depth without prior approval from the Committee.
- D. Centralizers. Surface Casing must be centralized at the shoe, above and below a stage collar or diverting tool, if run, and through usable-quality water zones. In Non-deviated holes, a centralizer must be placed every fourth joint from the cement shoe to the ground surface or to the bottom of the cellar. All centralizers must meet API specifications.
- E. Exceptions and alternative casing programs. The District Director may grant an exception to the requirements of Statewide Rule 13. In a written application, an operator must state the reason for the requested exception and outline an alternate program for casing and cementing through the protection depth for strata containing usable-quality water. The District Director may approve, modify, or reject a proposed program. An operator must obtain approval of any exception before beginning casing and cementing operations.
- F. Intermediate and production casing. For specific technical requirements, operators should consult Statewide Rule 13 (3) and (4).
- G. Plugging and abandoning. Cement plugs must be placed in the wellbore as required by Statewide Rule 14. The District Director may require additional cement plugs. For onshore or inland wells, a 10-foot cement plug must be placed in the top of the well, and the casing must be cut off three foot below the ground surface. All cement plugs, except the top plug, must have sufficient slurry volume to fill 100 feet of hole, plus ten percent for each 1,000 feet of depth from the ground surface to the bottom of the plug

To plug and abandon a well, operators must use only cements approved by the Director of Field Operations, Cementing companies, service companies or operators can qualify as approved cements by demonstrating that they are able to mix and pump cement in compliance with Commission rules and regulations.

Cementer: Fill in shaded areas.
Operator: Fill in other items.

RAILROAD COMMISSION OF TEXAS
Oil and Gas Division

Form W-15
Cementing Report
Rev. 4/28/2014
483-045

1. Operator's Name (As shown on Form P-5, Organization Report) GREYSTONE	2. RRC Operator No. 333767	3. RRC District No. 08	4. County of Well Site ANDREWS
5. Field Name (Wildcat or exactly as shown on RRC Records) Emma (Devonian)		6. API No. 42-003-45935	7. Drilling Permit No. 778161
8. Lease Name UNIVERSITY FV	9. Rule 37 Case No.	10. Oil Lease/Gas ID No.	11. Well No. .1H

CASING CEMENTING DATA:		SURFACE CASING	INTER-MEDIATE CASING	PRODUCTION CASING		MULTI-STAGE CEMENTING PROCESS	
				Single String	Multiple Parallel Strings	Tool	Shoe
12. Cementing Date						5-20-14	5-20-14
13. • Drilled Hole Size						12-1/4	12-1/4
• Est. % wash or hole enlargement						25	25
14. Size of casing (in. O.D.)						9-5/8	9 5/8
15. Top of liner (ft.)						0	0
16. Setting depth (ft.)						3500	5830
17. Number of centralizers used						35	
18. Hrs. Waiting on cement before drill-out						18	21
1 st Slurry	19. API cement used: No. of sacks ▶					1432	704
	Class ▶					C	C
	Additives ▶					REMARKS	REMARKS
2 nd Slurry	No. of sacks ▶					304	266
	Class ▶					C	C
	Additives ▶					REMARKS	NONE
3 rd Slurry	No. of sacks ▶						
	Class ▶						
	Additives ▶						
1st	20. Slurry pumped: Volume (cu. ft.) ▶					3293	1619
	Height (ft.) ▶					10512	5167
2nd	Volume (cu. ft.) ▶					407	354
	Height (ft.) ▶					1300	1129
3rd	Volume (cu. ft.) ▶						
	Height (ft.) ▶						
Total	Volume (cu. ft.) ▶					3700	1973
	Height (ft.) ▶					11812	6296
21. Was cement circulated to ground surface (or bottom of cellar) outside casing ?							

(22).Remarks #1- 50/50 - .10% FL-52 - .25 LB/SK CELLO FLAKE
Remarks #2 - 50/50 POZ - .005 LBS/SK STATIC FREE - 5% SODIUM CHLORIDE - .25 LB/SK CELLO FLAKE - .005 GPS FP-6L - 10% BENTONITE 2
Remarks #3 .005 LBS/SK STATIC FREE - CALCIUM CHLORIDE - .25 LBS/SK CELLO FLAKE - .005 GPS FP-6L

CEMENTING TO PLUG AND ABANDON	PLUG#1	PLUG #2	PLUG #3	PLUG #4	PLUG #5	PLUG #6	PLUG #7	PLUG #8
23. Cementing date								
24. Size of hole or pipe plugged (in.)								
25. Depth to bottom of tubing or drill pipe (ft.)								
26. Sacks of cement used (each plug)								
27. Slurry volume pumped (cu. Ft.)								
28. Calculated top of plug (ft.)								
29. Measured top of plug, if tagged (ft.)								
30. Slurry wt. (lb/gal)								
31. Type cement								

CEMENTER'S CERTIFICATE: I declare under penalties in Sec. 91.143, Texas Natural Resources Code, that I am authorized to make this Certification, that the cementing of casing and/or the placing of cement plugs in this well as shown in the report was performed by me or under my Supervision, and that the cementing data and facts presented on both sides of this form are true, correct, and complete, to the best of my knowledge. This certification covers cementing data only.

Don McDaniel-Field Specialist

Name and title of cementer's representative

BakerHughes OilField Ops

Cementing Company

Don McDaniel

Signature

2929 Allen Parkway Suite 2100

Address

Houston,

City,

Texas

State,

77019

Zip Code

(713)439-8600

Tel: Area Code

Number

5-20-14

Date: mo. Day yr.

OPERATOR'S CERTIFICATE: I declare under penalties prescribed in Sec. 91.143, Texas Natural Resources Code, that I am authorized to make this Certification, that I have knowledge of the well data and information presented in this report, and that data and facts presented on both sides of this form are true, correct, and complete, to the best of my knowledge. This certification covers all well data.

Lindsay Barnes

Typed or printed name of operator's representative

Engineering Technician

Title

Lindsay Barnes

Signature

1666 S. Voss #400

Address

Houston, TX 77057

City,

State,

Zip Code

832.333.4004

Tel: Area Code

Number

6/18/14

Date: mo. day yr.

Instructions to Form W-15, Cementing Report

IMPORTANT: Operators and cementing companies must comply with the requirements of the Commission's Statewide Rules 8 (Water Protection), 13 (Casing, Cementing, Drilling, and Completion), and 14 (Well Plugging). For offshore operations, see the requirements of Rule 13 (c).

A. What to file. An operator should file an original and one copy of the completed Form W-15 for each cementing company used on a well. The cementing of different casing strings on a well by one cementing company may be reported on one form. Form W-15 should be filed with the following.

- An initial oil or gas completion report, Form W-2 or G-1, as required by Statewide or special field rates;
- Form W-4, Application for Multiple Completion, if the well is a multiple parallel casing completion; and
- Form W-3, Plugging Record, unless the W-3 is signed by the cementing company representative. When reporting dry holes, operators must complete Form W-15, in addition to Form W-3, to show any casing cemented in the hole.

B. Where to file. The appropriate Commission District Office for the county in which the well is located.

C. Surface Casing. An operator must set and cement sufficient surface casing to protect all usable-quality water strata, as defined by the Texas Department of Water Resources, Austin. Before drilling a well in any field or area in which no field rules are in effect or in which surface casing requirements are not specified in the applicable rules, an operator must obtain a letter from the Department of Water Resources stating the protection depth. Surface casing should not be set deeper than 200 feet below the specified depth without prior approval from the Committee.

D. Centralizers. Surface Casing must be centralized at the shoe, above and below a stage collar or diverting tool, if run, and through usable-quality water zones. In Non-deviated holes, a centralizer must be placed every fourth joint from the cement shoe to the ground surface or to the bottom of the cellar. All centralizers must meet API specifications.

E. Exceptions and alternative casing programs. The District Director may grant an exception to the requirements of Statewide Rule 13. In a written application, an operator must state the reason for the requested exception and outline an alternate program for casing and cementing through the protection depth for strata containing usable-quality water. The District Director may approve, modify, or reject a proposed program. An operator must obtain approval of any exception before beginning casing and cementing operations.

F. Intermediate and production casing. For specific technical requirements, operators should consult Statewide Rule 13 (3) and (4).

G. Plugging and abandoning. Cement plugs must be placed in the wellbore as required by Statewide Rule 14. The District Director may require additional cement plugs. For onshore or inland wells, a 10-foot cement plug must be placed in the top of the well, and the casing must be cut off three foot below the ground surface. All cement plugs, except the top plug, must have sufficient slurry volume to fill 100 feet of hole, plus ten percent for each 1,000 feet of depth from the ground surface to the bottom of the plug.

To plug and abandon a well, operators must use only cementers approved by the Director of Field Operations, Cementing companies, service companies or operators can qualify as approved cementers by demonstrating that they are able to mix and pump cement in compliance with Commission rules and regulations.

Cementer: Fill in shaded areas.
Operator: Fill in other items.

RAILROAD COMMISSION OF TEXAS
Oil and Gas Division

Form W-15
Cementing Report
Rev. 04/28/2014
046292

JUN 10 2016

1. Operator's Name (As shown on Form P-5, Organization Report) <i>Greystone Oil and Gas LLC</i>	2. RRC Operator No. <i>3337167</i>	3. RRC District No. <i>08</i>	4. County of Well Site <i>Andrews</i>
5. Field Name (Wildcat or exactly as shown on RRC Records) <i>Emma (Devonian)</i>		6. API No. <i>42-003-45985</i>	7. Drilling Permit No. <i>778161</i>
8. Lease Name <i>University FV</i>	9. Rule 37 Case No.	10. Oil Lease/Gas ID No.	11. Well No. <i>1H</i>

CASING CEMENTING DATA:		SURFACE CASING	INTER-MEDIATE CASING	PRODUCTION CASING		MULTI-STAGE CEMENTING PROCESS	
				Single String	Multiple Parallel Strings	Tool	Shoe
12. Cementing Date						<i>6/1/14</i>	<i>6/1/14</i>
13. • Drilled Hole Size						<i>8-3/4</i>	<i>8-3/4</i>
• Est. % wash or hole enlargement						<i>25</i>	<i>25</i>
14. Size of casing (in. O.D.)						<i>7</i>	<i>7</i>
15. Top of liner (ft.)						<i>0</i>	<i>0</i>
16. Setting depth (ft.)						<i>9,352</i>	<i>10,403</i>
17. Number of centralizers used						<i>45</i>	
18. Hrs. Waiting on cement before drill-out						<i>24</i>	<i>28</i>
1 st Slurry	19. API cement used: No. of sacks ▶					<i>1085</i>	<i>133</i>
	Class ▶					<i>H</i>	<i>C</i>
	Additives ▶					<i>Remarks 3</i>	<i>Remarks 1</i>
2 nd Slurry	No. of sacks ▶					<i>165</i>	<i>116</i>
	Class ▶					<i>C</i>	<i>H</i>
	Additives ▶					<i>Remarks 4</i>	<i>Remarks 2</i>
3 rd Slurry	No. of sacks ▶						
	Class ▶						
	Additives ▶						
1 st	20. Slurry pumped: Volume (cu. ft.) ▶					<i>1356</i>	<i>208</i>
	Height (ft.) ▶					<i>7009</i>	<i>827</i>
2 nd	Volume (cu. ft.) ▶					<i>220</i>	<i>137</i>
	Height (ft.) ▶					<i>874</i>	<i>534</i>
3 rd	Volume (cu. ft.) ▶						
	Height (ft.) ▶						
Total	Volume (cu. ft.) ▶					<i>1576</i>	<i>345</i>
	Height (ft.) ▶					<i>7883</i>	<i>1361</i>
21. Was cement circulated to ground surface (or bottom of cellar) outside casing ?						<i>NO</i>	<i>NO</i>
(22).Remarks #1: 15:61:11 POZ : Class C : CSE-2 + 1% Salt + .3% R-3 + .75% EC-1 + .6% FL-25 + .6% FL-52 + 1% Salt + .1% FL-52 + 1.4% FL-62 + .1% ASA-301 + .4% SMS Remarks #2: Class H + .1% R-3 Remarks #3: 50:50 POZ : Class H + 1% Salt + .1% FL-52 + 1.4% FL-62 + .1% ASA-301 + .4% SMS Remarks #4: Class C + .2% FL-52							

CEMENTING TO PLUG AND ABANDON	PLUG #1	PLUG #2	PLUG #3	PLUG #4	PLUG #5	PLUG #6	PLUG #7	PLUG #8
23. Cementing date								
24. Size of hole or pipe plugged (in.)								
25. Depth to bottom of tubing or drill pipe (ft.)								
26. Sacks of cement used (each plug)								
27. Slurry volume pumped (cu. ft.)								
28. Calculated top of plug (ft.)								
29. Measured top of plug, if tagged (ft.)								
30. Slurry wt. (lb/gal)								
31. Type cement								

CEMENTER'S CERTIFICATE: I declare under penalties in Sec. 91.143, Texas Natural Resources Code, that I am authorized to make this Certification, that the cementing of casing and/or the placing of cement plugs in this well as shown in the report was performed by me or under my Supervision, and that the cementing data and facts presented on both sides of this form are true, correct, and complete, to the best of my knowledge. This certification covers cementing data only.

Richard Hodo - Field Specialist

Name and title of cementer's representative

BAKER HUGHES OILFIELD OPS, INC.

Cementing Company

Signature 

2929 Allen Parkway Suite 2100

Address

Houston,

City,

Texas, 77019

State, Zip Code

(713) 439-8600

Tel.: Area Code Number

6/1/14

Date: mo. Day yr.

OPERATOR'S CERTIFICATE: I declare under penalties prescribed in Sec. 91.143, Texas Natural Resources Code, that I am authorized to make this Certification, that I have knowledge of the well data and information presented in this report, and that data and facts presented on both sides of this form are true, correct, and complete, to the best of my knowledge. This certification covers all well data.

Lindsay Barnes

Typed or printed name of operator's representative

Engineering Technician

Title

Lindsay Barnes

Signature

1666 S. Voss #400 Houston, TX 77057

Address

City, State, Zip Code

832.333.4004

Tel.: Area Code Number

06/18/14

Date: mo. day yr.

Instructions to Form W-15, Cementing Report

IMPORTANT: Operators and cementing companies must comply with the requirements of the Commission's Statewide Rules 8 (Water Protection), 13 (Casing, Cementing, Drilling, and Completion), and 14 (Well Plugging). For offshore operations, see the requirements of Rule 13 (c).

- A. What to file. An operator should file an original and one copy of the completed Form W-15 for each cementing company used on a well. The cementing of different casing strings on a well by one cementing company may be reported on one form. Form W-15 should be filed with the following.
- An initial oil or gas completion report, Form W-2 or G-1, as required by Statewide or special field rates;
 - Form W-4, Application for Multiple Completion, if the well is a multiple parallel casing completion; and
 - Form W-3, Plugging Record, unless the W-3 is signed by the cementing company representative. When reporting dry holes, operators must complete Form W-15, in addition to Form W-3, to show any casing cemented in the hole.
- B. Where to file. The appropriate Commission District Office for the county in which the well is located.
- C. Surface Casing. An operator must set and cement sufficient surface casing to protect all usable-quality water strata, as defined by the Texas Department of Water Resources, Austin. Before drilling a well in any field or area in which no field rules are in effect or in which surface casing requirements are not specified in the applicable rules, an operator must obtain a letter from the Department of Water Resources stating the protection depth. Surface casing should not be set deeper than 200 feet below the specified depth without prior approval from the Committee.
- D. Centralizers. Surface Casing must be centralized at the shoe, above and below a stage collar or diverting tool, if run, and through usable-quality water zones. In Non-deviated holes, a centralizer must be placed every fourth joint from the cement shoe to the ground surface or to the bottom of the cellar. All centralizers must meet API specifications.
- E. Exceptions and alternative casing programs. The District Director may grant an exception to the requirements of Statewide Rule 13. In a written application, an operator must state the reason for the requested exception and outline an alternate program for casing and cementing through the protection depth for strata containing usable-quality water. The District Director may approve, modify, or reject a proposed program. An operator must obtain approval of any exception before beginning casing and cementing operations.
- F. Intermediate and production casing. For specific technical requirements, operators should consult Statewide Rule 13 (3) and (4).
- G. Plugging and abandoning. Cement plugs must be placed in the wellbore as required by Statewide Rule 14. The District Director may require additional cement plugs. For onshore or inland wells, a 10-foot cement plug must be placed in the top of the well, and the casing must be cut off three feet below the ground surface. All cement plugs, except the top plug, must have sufficient slurry volume to fill 100 feet of hole, plus ten percent for each 1,000 feet of depth from the ground surface to the bottom of the plug.

To plug and abandon a well, operators must use only cements approved by the Director of Field Operations, Cementing companies, service companies or operators can qualify as approved cements by demonstrating that they are able to mix and pump cement in compliance with Commission rules and regulations.

Cement: Fill in shaded areas.
Operator: Fill in other items.

RAILROAD COMMISSION OF TEXAS
Oil and Gas Division

RECEIVED
JUL - 7 2016

Form W-15
Cementing Report
Rev. 4/28/2014
046292

1. Operator's Name (As shown on Form P-5, Organization Report) GREYSTONE OIL AND GAS	2. RRC Operator No. 333767	3. RRC District No. 08	4. County of Well Site ANDREWS
5. Field Name (Wildcat or exactly as shown on RRC Records) Emma (Devonian)		6. API No. 42-003-4935	7. Drilling Permit No. 778161
8. Lease Name UN IVERSITY	9. Rule 37 Case No.	10. Oil Lease/Gas ID No.	11. Well No. FV-1H

CASING CEMENTING DATA:		SURFACE CASING	INTER-MEDIATE CASING	PRODUCTION CASING		MULTI-STAGE CEMENTING PROCESS	
				Single String	Multiple Parallel Strings	Tool	Shoe
12. Cementing Date				6/25/14			
13. • Drilled Hole Size				6-1/8			
• Est. % wash or hole enlargement				15			
14. Size of casing (in. O.D.)				4-1/2			
15. Top of liner (ft.)				9983			
16. Setting depth (ft.)				14557			
17. Number of centralizers used				0			
18. Hrs. Waiting on cement before drill-out				NA			
1 st Slurry	19. API cement used: No. of sacks ▶			600			
	Class ▶			H			
	Additives ▶			Remarks # 1			
2 nd Slurry	No. of sacks ▶						
	Class ▶						
	Additives ▶						
3 rd Slurry	No. of sacks ▶						
	Class ▶						
	Additives ▶						
1 st	20. Slurry pumped: Volume (cu. ft.) ▶			746			
	Height (ft.) ▶			7921			
2 nd	Volume (cu. ft.) ▶						
	Height (ft.) ▶						
3 rd	Volume (cu. ft.) ▶						
	Height (ft.) ▶						
Total	Volume (cu. ft.) ▶			746			
	Height (ft.) ▶			7921			
21. Was cement circulated to ground surface (or bottom of cellar) outside casing ?				NO			

(22).Remarks #1 0.2% bwoc fl-52+1.4% bwoc fl-62+0.1% bwoc asa-301+0.4%bwoc sodium Metasilicate+0.10% r-21+55.2%fw
Remarks #2 .

CEMENTING TO PLUG AND ABANDON	PLUG #1	PLUG #2	PLUG #3	PLUG #4	PLUG #5	PLUG #6	PLUG #7	PLUG #8
23. Cementing date								
24. Size of hole or pipe plugged (in.)								
25. Depth to bottom of tubing or drill pipe (ft.)								
26. Sacks of cement used (each plug)								
27. Slurry volume pumped (cu. ft.)								
28. Calculated top of plug (ft.)								
29. Measured top of plug, if tagged (ft.)								
30. Slurry wt. (lb/gal)								
31. Type cement								

CEMENTER'S CERTIFICATE: I declare under penalties in Sec. 91.143, Texas Natural Resources Code, that I am authorized to make this Certification, that the cementing of casing and/or the placing of cement plugs in this well as shown in the report was performed by me or under my Supervision, and that the cementing data and facts presented on both sides of this form are true, correct, and complete, to the best of my knowledge. This certification covers cementing data only.

Saul Saucedo Jr.—Service Supervisor

Name and title of cementer's representative

Baker Hughes Oilfield Ops, INC

Cementing Company


Signature

2929 Allen Parkway, Suite 2100

Address

Houston,

City,

Texas 77019

State, Zip Code

(713) 439-8600

Tel.: Area Code Number

6-25-14

Date: mo. Day yr.

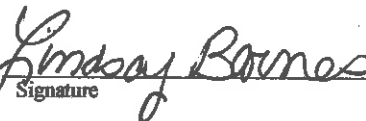
OPERATOR'S CERTIFICATE: I declare under penalties prescribed in Sec. 91.143, Texas Natural Resources Code, that I am authorized to make this Certification, that I have knowledge of the well data and information presented in this report, and that data and facts presented on both sides of this form are true, correct, and complete, to the best of my knowledge. This certification covers all well data.

Lindsay Barnes

Typed or printed name of operator's representative

Engineering Technician

Title


Signature

1616 S. Vassar #400 Houston, TX 77057

Address

City,

State,

Zip Code

832-333-4004

Tel.: Area Code Number

07/16/2014

Date: mo. / day yr.

Instructions to Form W-15, Cementing Report

IMPORTANT: Operators and cementing companies must comply with the requirements of the Commission's Statewide Rules 8 (Water Protection), 13 (Casing, Cementing, Drilling, and Completion), and 14 (Well Plugging). For offshore operations, see the requirements of Rule 13 (c).

- A. What to file. An operator should file an original and one copy of the completed Form W-15 for each cementing company used on a well. The cementing of different casing strings on a well by one cementing company may be reported on one form. Form W-15 should be filed with the following.
- An initial oil or gas completion report, Form W-2 or G-1, as required by Statewide or special field rates;
 - Form W-4, Application for Multiple Completion, if the well is a multiple parallel casing completion; and
 - Form W-3, Plugging Record, unless the W-3 is signed by the cementing company representative. When reporting dry holes, operators must complete Form W-15, in addition to Form W-3, to show any casing cemented in the hole.
- B. Where to file. The appropriate Commission District Office for the county in which the well is located.
- C. Surface Casing. An operator must set and cement sufficient surface casing to protect all usable-quality water strata, as defined by the Texas Department of Water Resources, Austin. Before drilling a well in any field or area in which no field rules are in effect or in which surface casing requirements are not specified in the applicable rules, an operator must obtain a letter from the Department of Water Resources stating the protection depth. Surface casing should not be set deeper than 200 feet below the specified depth without prior approval from the Committee.
- D. Centralizers. Surface Casing must be centralized at the shoe, above and below a stage collar or diverting tool, if run, and through usable-quality water zones. In Non-deviated holes, a centralizer must be placed every fourth joint from the cement shoe to the ground surface or to the bottom of the cellar. All centralizers must meet API specifications.
- E. Exceptions and alternative casing programs. The District Director may grant an exception to the requirements of Statewide Rule 13. In a written application, an operator must state the reason for the requested exception and outline an alternate program for casing and cementing through the protection depth for strata containing usable-quality water. The District Director may approve, modify, or reject a proposed program. An operator must obtain approval of any exception before beginning casing and cementing operations.
- F. Intermediate and production casing. For specific technical requirements, operators should consult Statewide Rule 13 (3) and (4).
- G. Plugging and abandoning. Cement plugs must be placed in the wellbore as required by Statewide Rule 14. The District Director may require additional cement plugs. For onshore or inland wells, a 10-foot cement plug must be placed in the top of the well, and the casing must be cut off three foot below the ground surface. All cement plugs, except the top plug, must have sufficient slurry volume to fill 100 feet of hole, plus ten percent for each 1,000 feet of depth from the ground surface to the bottom of the plug.

To plug and abandon a well, operators must use only cementers approved by the Director of Field Operations, Cementing companies, service companies or operators can qualify as approved cementers by demonstrating that they are able to mix and pump cement in compliance with Commission rules and regulations.

Tracking No.: 124761

This facsimile L-1 was generated electronically from data submitted to the RRC.

Instructions

When to File Form L-1:

- with Forms G-1, W-2, and GT-1 for new and deepened gas, oil, and geothermal wells
- with Form W-3 for plugged dry holes
- when sending in a log which was held under a request for confidentiality and the period for confidentiality has not yet expired.

When is Form L-1 NOT required:

- with Forms W-2, G-1, and GT-1 filed for injection wells, disposal wells, water supply wells, service wells, re-test wells, re-classifications, and plugbacks of oil, gas or geothermal wells
- with Form W-3 for plugging of other than a dry hole

Where to File Form L-1:

- with the appropriate Commission district office

Filling out Form L-1:

- Section I and the signature section must be filled out for all wells
- complete only the appropriate part of Section II

Type of log required:

- any wireline survey run for the purpose of obtaining lithology, porosity, or resistivity information
- no more than one such log is required but it must be of the subject well
- if such log is NOT run on the subject well, do NOT substitute any other type of log; just select Section II, Part A below

SECTION I. IDENTIFICATION

Operator Name: GREYSTONE OIL & GAS, LLP	District No. 08	Completion Date: 08/23/2014
Field Name EMMA (DEVONIAN)	Drilling Permit No. 778161	
Lease Name UNIVERSITY FV	Lease/ID No. 46585	Well No. 1H
County ANDREWS	API No. 42- 003-45935	

SECTION II. LOG STATUS (Complete either A or B)

A. BASIC ELECTRIC LOG NOT RUN

B. BASIC ELECTRIC LOG RUN. (Select one)

- 1. Confidentiality is requested and a copy of the header for each log that has been run on the well is attached.
- 2. Confidentiality already granted on basic electric log covering this interval (applicable to deepened wells only).
- 3. Basic electric log covering this interval already on file with Commission (applicable to deepened wells only).
- 4. Log attached to (select one):
 - (a) Form L-1 (this form). If the company/lease name on log is different from that shown in Section I, please enter name on log here: _____
 Check here if attached log is being submitted after being held confidential.
 - (b) Form P-7, Application for Discovery Allowable and New Field Designation.
 - (c) Form W-4, Application for Multiple Completion:
 Lease or ID No(s). _____
 Well No(s). _____

Lindsay Barnes

Signature

GREYSTONE OIL & GAS, LLP

Name (print)

Title

(832) 333-4004

Phone

03/11/2015

Date

-FOR RAILROAD COMMISSION USE ONLY-



COMPENSATED Z-DENSILOGSM
COMPENSATED NEUTRON LOG
DIGITAL SPECTRALOG[®]
GAMMA RAY LOG

FILE NO: MD11026	COMPANY WELL	GREYSTONE OIL & GAS, LLP UNIVERSITY FV #1H
API NO: 4200345935	FIELD COUNTY	TRIPLE-N (DEVONIAN) ANDREWS STATE TEXAS
Ver. 3.87 FINAL PRINT	LOCATION: 300' FSL & 330' FEL SEC. 31, BLK. 9 UL SURVEY A-U267	OTHER SERVICES DLL/MLL
PERMANENT DATUM	G.L. _____ ELEVATION 3158 FT	ELEVATIONS:
LOG MEASURED FROM	K.B. _____ 25 FT ABOVE P.D.	KB 3183 FT
DRILL. MEAS. FROM	KELLY BUSHING	DF 3182 FT GL 3158 FT

DATE	27-MAY-2014		
RUN	TRIP	1	1
SERVICE ORDER	086662		
DEPTH DRILLER	9935 FT		
DEPTH LOGGER	9969 FT		
BOTTOM LOGGED INTERVAL	9934 FT		
TOP LOGGED INTERVAL	100 FT		
CASING DRILLER	9.625 IN	@ 5811 FT	@
CASING LOGGER	5817 FT		
BIT SIZE	8.75 IN		
TYPE OF FLUID IN HOLE	FRESH WATER		
DENSITY	VISCOSITY	9.1 LB/G	54 CP
PH	FLUID LOSS	9	6 C3
SOURCE OF SAMPLE	CIRCULATION TANK		
RM AT MEAS. TEMP.	0.20 OHMM	@ 84 DEGF	@
RMF AT MEAS. TEMP.	0.15 OHMM	@ 84 DEGF	@
RMC AT MEAS. TEMP.	0.25 OHMM	@ 84 DEGF	@
SOURCE OF RMF	RMC	CALCULATED	CALCULATED
RM AT BHT	0.34 OHMM	@ 140 DEGF	@
TIME SINCE CIRCULATION	14 HOURS		
MAX. RECORDED TEMP.	140 DEGF		
EQUIP. NO.	LOCATION	HL6713	MIDLAND
RECORDED BY	D. ALDRICH/ N. VALADEZ		
WITNESSED BY	J. ELLEFSON		

**CERTIFICATE OF COMPLIANCE
 AND TRANSPORTATION AUTHORITY**

This facsimile P-4 was generated electronically from data submitted to the RRC.
 A certification of the automated data is available in the RRC's Austin office.

Tracking No.: 124761

1. Field name exactly as shown on proration schedule EMMA (DEVONIAN)		2. Lease name as shown on proration schedule UNIVERSITY FV					
3. Current operator name exactly as shown on P-5 Organization Report GREYSTONE OIL & GAS, LLP		4. Operator P-5 no. 333767	5. Oil Lse/Gas ID no. 46585	6. County ANDREWS	7. RRC district 08		
8. Operator address including city, state, and zip code 1616 S VOSS RD STE 400 HOUSTON, TX 77057		9. Well no(s) (see instruction E) 1H			11. Effective Date 08/23/2014		
		10. Classification <input checked="" type="checkbox"/> Oil <input type="checkbox"/> Gas <input type="checkbox"/> Other (see instruction A)					
12. Purpose of Filing. (Complete section a or b below.) (See instructions B and G)							
a. Change of: <input type="checkbox"/> operator <input type="checkbox"/> oil or condensate gatherer <input type="checkbox"/> gas gatherer <input type="checkbox"/> gas purchaser <input type="checkbox"/> gas purchaser system code <input type="checkbox"/> field name from _____ <input type="checkbox"/> lease name from _____							
- - - OR - - -							
b. New RRC Number for: <input checked="" type="checkbox"/> oil lease <input type="checkbox"/> gas well <input type="checkbox"/> other well (specify) _____ Due to: <input checked="" type="checkbox"/> new completion or recompletion <input type="checkbox"/> reclass oil to gas <input type="checkbox"/> reclass gas to oil <input type="checkbox"/> consolidation, unitization, or subdivision (oil lease only)							
13. Authorized GAS WELL GAS or CASINGHEAD GAS Gatherer(s) and/or Purchaser(s). (See instruction G).							
Gatherer	Purchaser	Name of GAS WELL GAS or CASINGHEAD GAS Gatherer(s) or Purchaser(s) As Indicated in Columns to the Left (Attach an additional sheet in same format if more space is needed)			Purchaser's RRC Assigned System Code	Percent of Take	Full-well stream
X	X	DCP MIDSTREAM, LP(195918)			0001	100.0	
14. Authorized OIL or CONDENSATE Gatherer(s). (See instruction G).							
Name of OIL or CONDENSATE Gatherer(s) - List Highest Volume Gatherer First (Attach an additional sheet in same format if more space is needed)						Percent of Take	
BRIDGER TRANSPORTATION, LLC(091157)						100.0	
RRC USE ONLY: Reviewer's initials: <u>RRC Staff</u> Approval date: <u>08/05/2015</u>							
15. PREVIOUS OPERATOR CERTIFICATION FOR CHANGE OF OPERATOR P-4 FILING. Being the PREVIOUS OPERATOR, I certify that operating responsibility for the well(s) designated in this filing, located on the subject lease has been transferred in its entirety to the above named Current Operator. I understand, as Previous Operator, that designation of the above named operator as Current Operator is not effective until this certificate is approved by the Commission.							
Name of Previous Operator				Signature			
Name (print)				<input type="checkbox"/> Authorized Employee of previous operator		<input type="checkbox"/> Authorized agent of previous operator (see instruction G)	
Title				Date		Phone with area code	
16. CURRENT OPERATOR CERTIFICATION. By signing this certificate as the Current Operator, I certify that all statements on this form are true and correct and I acknowledge responsibility for the regulatory compliance of the subject lease including plugging of well(s) pursuant to Rule 14. I further acknowledge that I assume responsibility for the physical operation, control, and proper plugging of each well designated in this filing. I also acknowledge that I will remain designated as the Current Operator until a new certificate designating a new Current Operator is approved by the Commission.							
GREYSTONE OIL & GAS, LLP				Lindsay Barnes			
Name (print)				Signature		<input type="checkbox"/> Authorized agent of current operator (see instruction G)	
Title				<input checked="" type="checkbox"/> Authorized Employee of current operator			
E-mail Address (optional) <u>lindsay.barnes@greystone.bz</u>				Date <u>03/11/2015</u>		Phone with area code <u>(832) 333-4004</u>	

STATEMENT OF PRODUCTIVITY OF ACREAGE
ASSIGNED TO PRORATION UNITS

Form P-15

Tracking No.: 124761

This facsimile P-15 was generated electronically
from data submitted to the RRC.

The undersigned states that he is authorized to make this statement; that he has knowledge of the facts concerning the GREYSTONE OIL & GAS, LLP ,

UNIVERSITY FV , No. 1H ; that such well is
LEASE OPERATOR WELL

completed in the EMMA (DEVONIAN) Field, ANDREWS County,

Texas and that the acreage claimed, and assigned to such well for proration purposes as authorized by special rule and as shown on the attached certified plat embraces _____

180.0 acres which can reasonably be considered to be productive of hydrocarbons.

- CERTIFICATE -

I declare under penalties prescribed in Sec. 91.143, Texas Natural Resources Code, that I am authorized to make this report, that this report was prepared by me or under my supervision and direction, and that data and facts stated therein are true, correct, and complete, to the best of my knowledge,

Date 08/05/2015 Signature Lindsay Barnes

Telephone (832) 333-4004 Title _____
AREA CODE

GREYSTONE OIL & GAS, LLP

LEASE NAME & WELL NO.:

UNIVERSITY FV #1H "AS-DRILLED"

TOPOGRAPHY & VEGETATION:

NATURAL MESQUITE PASTURE

NEAREST TOWN IN COUNTY:

±13.1 MILES SOUTHWEST OF ANDREWS, TEXAS

DESCRIPTION:

**SECTION 31, BLOCK 9, UNIVERSITY LAND
ANDREWS COUNTY, TEXAS**



This location has been very carefully staked on the ground according to the best official survey records, maps, and other data available to us. This plat does not in any way represent a "Boundary Survey", and does not comply with correct T.B.P.L.S. Minimum Standards of Procedures for Boundary Surveys.

CERTIFICATION:

Surface Hole Location:
 300' FSL & 330' FEL
SHL Ground Elevation: 3158'
 X = 419974 Y = 209040
 LAT.: N 32.1356857 LONG.: W 102.6060273
 NAD 83 TX-NC ZONE:
 X = 697635 Y = 6757189
 LAT.: N 32.1357971 LONG.: W 102.6064605

Penetration Point:
 378' FSL & 368' FEL
 X = 419920 Y = 209107
 LAT.: N 32.1358650 LONG.: W 102.6062115

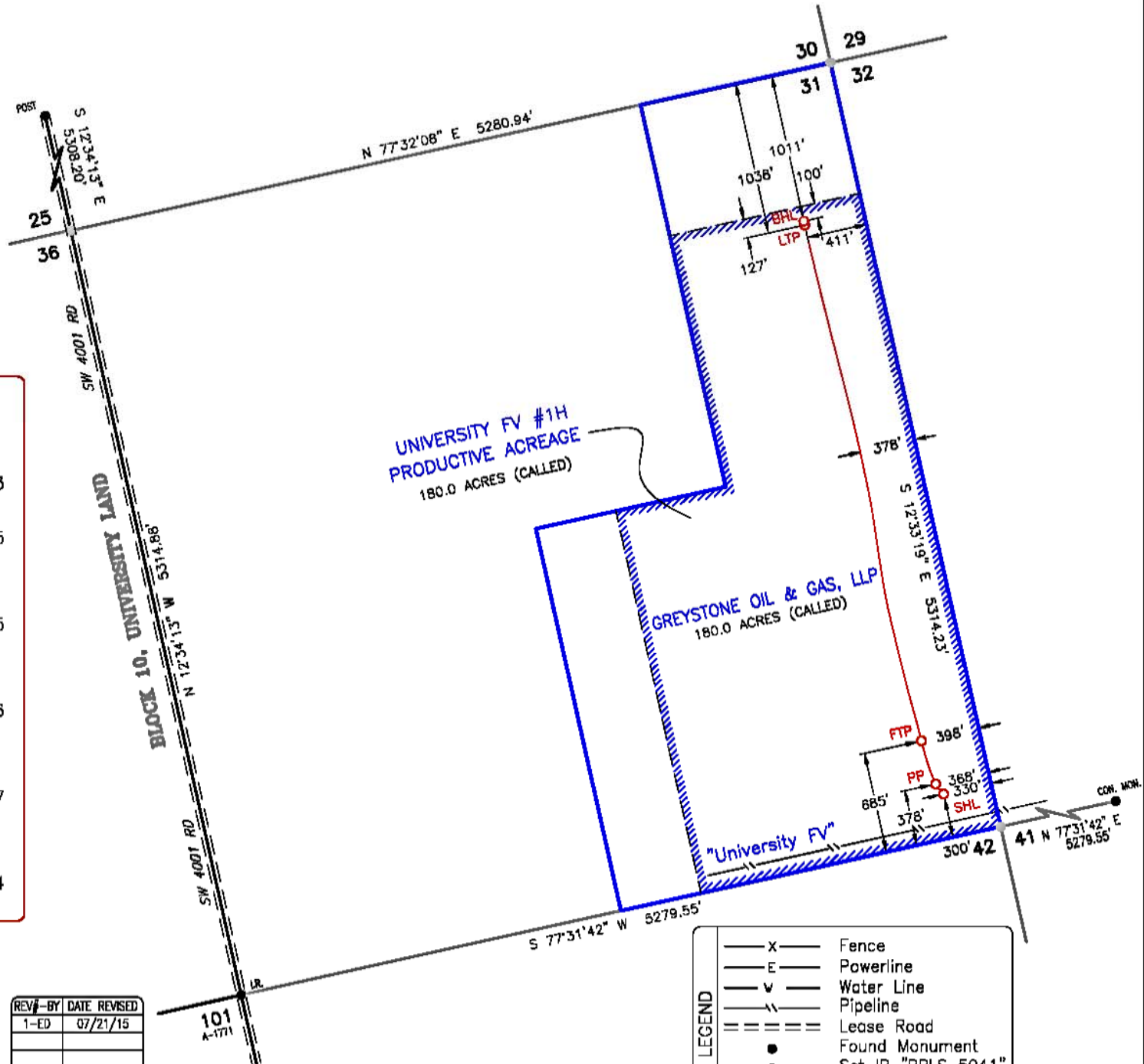
First Take Point:
 685' FSL & 398' FEL
 X = 419823 Y = 209401
 LAT.: N 32.1366579 LONG.: W 102.6065686

Last Take Point:
 1038' FNL & 411' FEL
 X = 419031 Y = 212903
 LAT.: N 32.1461681 LONG.: W 102.6096767

Bottom Hole Location:
 1011' FNL & 411' FEL
 X = 419025 Y = 212930
 LAT.: N 32.1462392 LONG.: W 102.6097004

Texas Reg. No. 5041

I, William J. Keating, a Registered Professional Land Surveyor, and an authorized agent of Topographic Land Surveyors, do hereby certify that the above described well location was surveyed and staked on the ground as shown herein. This plat is for Texas Railroad Commission permitting only.



SCALE:	1" = 1000'
DATE:	AUGUST 25, 2014
COGO:	726-44138
AD_UNIVERSITY_FV_1H_ALT_REV1	
DRAWN BY:	ED 8-28-14

REV#	BY	DATE REVISED
1-ED		07/21/15

LEGEND

— X —	Fence
— E —	Powerline
— v —	Water Line
— —	Pipeline
— = —	Lease Road
●	Found Monument
●	Set IR "RPLS 5041"
○	Unless otherwise noted
○	Calculated Corner

ORIGINAL DOC. SIZE: 8.5"x14"

Groundwater
Advisory Unit

GROUNDWATER PROTECTION DETERMINATION

Form GW-2

Date **March 5, 2014**

GAU File No.: **16511**

***** EXPEDITED APPLICATION *****

API Number **00345935**

Attention: **LINDSAY BARNES**

RRC Lease No. **000000**

SC_333767_00345935_000000_16511.pdf

**GREYSTONE O&G LLP
1616 S VOSS RD
STE 400
HOUSTON TX 77057**

--Measured--

330 ft FEL

300 ft FSL

MRL: SECTION

P-5# 333767

Digital Map Location:	
X-coord/Long	102.60602
Y-coord/Lat	32.13568
Datum	83
Zone	

County **ANDREWS** Lease & Well No. **UNIVERSITY FV #1H** Purpose **ND**

Location **SUR-UL, BLK-9, SEC-31, -- [TD=10800] , [RRC 08] ,**

To protect usable-quality groundwater at this location, the Groundwater Advisory Unit of the Railroad Commission of Texas recommends:

The interval from the land surface to a depth of 250 feet and the ZONE from 950 feet to 1550 feet must be protected.

Note: Unless stated otherwise, this recommendation is intended to apply only to the subject well and not for area wide use. This recommendation is intended for normal drilling, production, and plugging operations only. It does not apply to saltwater disposal operation into a nonproductive zone (RRC Form W-14).

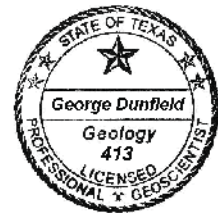
If you have any questions, please contact us at 512-463-2741, gau@rrc.state.tx.us, or by mail.

Sincerely,

George Dunfield
 Digitally signed by George Dunfield
 DN: c=US, st=TEXAS, l=Austin, o=Railroad
 Commission of Texas, ou=Groundwater
 Advisory Unit, cn=George Dunfield,
 email=george.dunfield@rrc.state.tx.us
 Date: 2014.03.05 16:34:27 -0600

George Dunfield, P.G.

GEOLOGIST SEAL



Geologist, Groundwater Advisory Unit
Oil & Gas Division

The seal appearing on this document was authorized by George Dunfield on 3/5/2014
Note: Alteration of this electronic document will invalidate the digital signature.

GREYSTONE OIL & GAS, LLP

LEASE NAME & WELL NO.:

UNIVERSITY FV #1H "AS-DRILLED"

TOPOGRAPHY & VEGETATION:

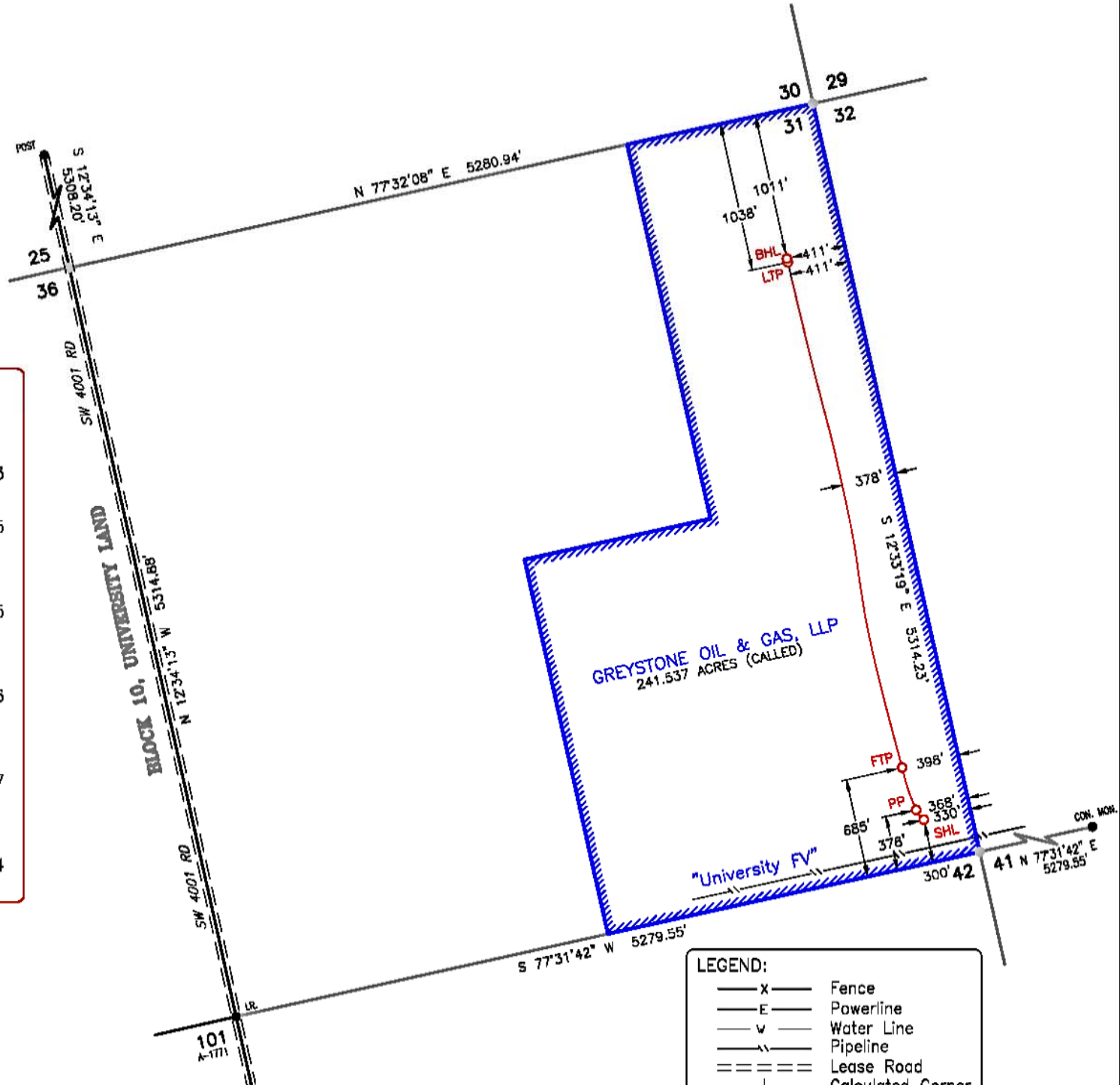
NATURAL MESQUITE PASTURE

NEAREST TOWN IN COUNTY:

±13.1 MILES SOUTHWEST OF ANDREWS, TEXAS

DESCRIPTION:

**SECTION 31, BLOCK 9, UNIVERSITY LAND
ANDREWS COUNTY, TEXAS**



Surface Hole Location:

300' FSL & 330' FEL
SHL Ground Elevation: 3158'
 X = 419974 Y = 209040
 LAT.: N 32.1356857 LONG.: W 102.6060273
 NAD 83 TX-NC ZONE:
 X = 697635 Y = 6757189
 LAT.: N 32.1357971 LONG.: W 102.6064605

Penetration Point:

378' FSL & 368' FEL
 X = 419920 Y = 209107
 LAT.: N 32.1358650 LONG.: W 102.6062115

First Take Point:

685' FSL & 398' FEL
 X = 419823 Y = 209401
 LAT.: N 32.1366579 LONG.: W 102.6065686

Last Take Point:

1038' FNL & 411' FEL
 X = 419031 Y = 212903
 LAT.: N 32.1461681 LONG.: W 102.6096767

Bottom Hole Location:

1011' FNL & 411' FEL
 X = 419025 Y = 212930
 LAT.: N 32.1462392 LONG.: W 102.6097004

This location has been very carefully staked on the ground according to the best official survey records, maps, and other data available to us. This plat does not in any way represent a "Boundary Survey", and does not comply with correct T.B.P.L.S. Minimum Standards of Procedures for Boundary Surveys.

CERTIFICATION:



William J. Keating
 Texas Reg. No. 5041

I, William J. Keating, a Registered Professional Land Surveyor, and an authorized agent of Topographic Land Surveyors, do hereby certify that the above described well location was surveyed and staked on the ground as shown herein. This plat is for Texas Railroad Commission permitting only.

SCALE:	1" = 1000'
DATE:	AUGUST 25, 2014
COGO:	726-44138
AD_UNIVERSITY_FV_1H	
DRAWN BY:	JBT 8-28-14

ORIGINAL DOC. SIZE: 8.5"x14"

LEGEND:

—x—	Fence
—E—	Powerline
—w—	Water Line
— — — —	Pipeline
==	Lease Road
+	Calculated Corner