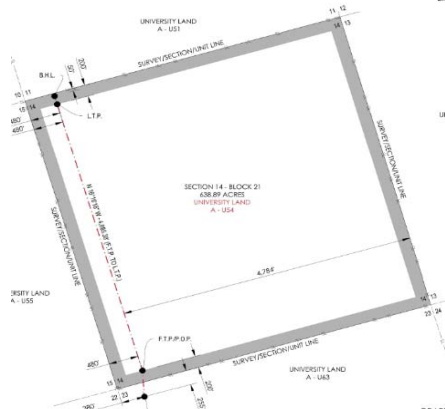


Surf Csg (13-3/8") @ 1172'
Circ to Surf



Intermediate Csg (10-3/4") @ 4623'
Est TOC (10-3/4") @ 0'

Est TOC (5-1/2") @ 1834'

Pkr @ TBD'
SSMSN @ TBD'
EOT @ 11206.02

Intermediate Csg (7-5/8") @ 11058'
Est TOC (7-5/8") @ 0'

KOP @ 11,070' Lateral @ 12,335'
Sidetrack #2

Production Csg (5-1/2") @ 16818'

PBTD 16744'
TD @ 16828'
TVD 11813'

Burst Subs



WELL NAME: UL American Basin 14-21 1H
STATE: Texas
API NO: 42-495-33876
PBTD: 16,744'
TD: 16,828' **TVD:** 11,813'

FIELD: Phantom (Wolfcamp)
COUNTY: Winkler
SPUD DATE: 8/7/2017
TD DATE: 9/7/2017
RR DATE: 9/16/2017

Well #: 4249500146 **Permit #:** 828090
SRF LOC: Sec 23, Blk 21 Surv UL; 255 FNL, 380 FWL
BHL: Sec 14, Blk 21 Surv UL; 374 FNL, 500 FWL
FORMATION: Lower Wolfcamp B
ELEVATION: 2791'; RKB 25'

PIPE RECORD							HOLE DATA		CEMENT DATA				
	OD	GRADE	THD	WEIGHT (ppf)	TOP	BTM	# JTS	BIT SIZE	DEPTH	SK	YIELD (cu ft/sk)	TOC	Method
Surf Csg	13-3/8"	J-55	STC	54.50#	0'	1172'	27	17.500"	1182'	1365	1.96 & 1.33	0'	Circ to Surf
Intermediate Csg	10-3/4"	J-55	BTC	45.50#	0'	4623'	109	12.250"	4675'	790	2.81 & 1.33	0'	Circ to Surf
Intermediate Csg	7-5/8"	HCP110	BTC	29.70#	0'	11058'	246	9.875"	11060'	1100	2.85 & 1.46	0'	Circ to Surf
Production Csg	5-1/2"	P110	GeoConn	23.00#	0'	16818'	382	6.750"	16828'	1090	1.23	1834'	Est

	OD	GRADE	THD	WEIGHT	PKR @	TYPE	BTM	Perfs/Top of Sleeve Depth:	See Below	LOGS:
Tbg	2-7/8"	L80	EUE	6.5#	11,197'	AS1X	11,206'			

HISTORY:

Perforations: CMPL DATE: 10/13/2017

Formation	Top Perf	Bottom Perf	Net Feet	JSPF	Holes
LWC B	12175	16718			

TUBING/BHA Detail as of: 2/19/2018	ID (in)	OD (in)	Jts	Length (ft)	Depth (ft)	PUMP/ROD Detail as of: 2/19/2018	Rods	Length (ft)
KB Correction				25.00	25.00	KB Correction		
Tubing Hanger	2.875	7.063		0.5	25.50			
1 jt 2-7/8" L80 EUE tubing	2.441	2.875	1	32.68	58.18			
2-7/8" pup joint	2.441	2.875	1	8.10	66.28			
339 jts 2-7/8" L80 EUE tubing	2.441	2.875	339	11086.55	11152.83			
X-Nipple	2.441	2.875		1.21	11154.04			
1 jt 2-7/8" L80 EUE tubing	2.441	2.875	1	32.69	11186.73			
2-7/8" On/off tool	2.441	2.875		1.91	11188.64			
X-Profile Stinger	2.313	2.875		1.20	11189.84			
AS1-X Production Packer	2.441	2.875		7.21	11197.05			
2-7/8" pup joint	2.313	4.500	1	6.09	11203.14			
XN-Nipple	2.441	5.500		1.28	11204.42			
2-7/8" 10K ceramic disc sub & WLEG	2.441	2.875		1.60	11206.02			
EOT (KB)					11206.02	Note:		
						TOTAL		
						0		

Updated by: dgraeve
2/19/2018

SHOE TRACT

	Length	ID (in)	Top Depth (ft)	Btm Depth (ft)
Reaming Shoe	2.38	N/A	16815.62	16818.00
Float Collar	1.85	N/A	16813.77	16815.62
Joint 1	44.58	4.670	16769.19	16813.77
Burst Sub 1	1.10	4.625	16768.09	16769.19
Pup Joint	22.26	4.670	16745.83	16768.09
Burst Sub 2	1.05	4.625	16744.78	16745.83
Joint 2	40.64	4.670	16704.14	16744.78
Joint 3	44.59	4.670	16659.55	16704.14
Joint 4	44.58	4.670	16614.97	16659.55