



RAILROAD COMMISSION OF TEXAS

Form W-2

1701 N. Congress  
P.O. Box 12967  
Austin, Texas 78701-2967

Status: Approved  
Date: 05/09/2018  
Tracking No.: 189132

OIL WELL POTENTIAL TEST, COMPLETION OR RECOMPLETION REPORT, AND LOG

OPERATOR INFORMATION

Operator Name: FELIX ENERGY HOLDINGS II, LLC Operator No.: 265322  
Operator Address: FELIX ENERGY 1530 16TH ST SUITE 500 DENVER, CO 80202-0000

WELL INFORMATION

API No.: 42-495-33843 County: WINKLER  
Well No.: 1H RRC District No.: 08  
Lease Name: UL URAD 1609-21 Field Name: PHANTOM (WOLFCAMP)  
RRC Lease No.: 49852 Field No.: 71052900  
Location: Section: 16, Block: 21, Survey: UL, Abstract:  
  
Latitude: Longitude:  
This well is located 4.61 miles in a W  
direction from WINK,  
which is the nearest town in the county.

FILING INFORMATION

Purpose of filing: Initial Potential  
Type of completion: New Well  
Well Type: Producing Completion or Recompletion Date: 08/19/2017  

Type of Permit	Date	Permit No.
Permit to Drill, Plug Back, or Deepen	04/21/2017	825440
Rule 37 Exception		
Fluid Injection Permit		
O&G Waste Disposal Permit		
Other:		

COMPLETION INFORMATION

Spud date: 05/28/2017	Date of first production after rig released: 08/19/2017
Date plug back, deepening, recompletion, or drilling operation commenced: 05/28/2017	Date plug back, deepening, recompletion, or drilling operation ended: 07/04/2017
Number of producing wells on this lease in this field (reservoir) including this well: 1	Distance to nearest well in lease & reservoir (ft.): 0.0
Total number of acres in lease: 641.11	Elevation (ft.): 2807 GR
Total depth TVD (ft.): 12182	Total depth MD (ft.): 22453
Plug back depth TVD (ft.):	Plug back depth MD (ft.):
Was directional survey made other than inclination (Form W-12)? Yes	Rotation time within surface casing (hours): 48.0
Recompletion or reclass? No	Is Cementing Affidavit (Form W-15) attached? Yes
Type(s) of electric or other log(s) run: Gamma Ray (MWD)	Multiple completion? No
Electric Log Other Description:	
Location of well, relative to nearest lease boundaries	Off Lease : No
of lease on which this well is located:	358.0 Feet from the West Line and
	337.0 Feet from the South Line of the
	UL URAD 1609-21 Lease.

FORMER FIELD (WITH RESERVOIR) & GAS ID OR OIL LEASE NO.

Field & Reservoir	Gas ID or Oil Lease No.	Well No.	Prior Service Type
-------------------	-------------------------	----------	--------------------

PACKET: N/A

W2:	N/A		
FOR NEW DRILL OR RE-ENTRY, SURFACE CASING DEPTH DETERMINED BY:			
GAU Groundwater Protection Determination		Depth (ft.): 950.0	Date: 04/13/2017
SWR 13 Exception		Depth (ft.):	

INITIAL POTENTIAL TEST DATA FOR NEW COMPLETION OR RECOMPLETION		
Date of test: 09/22/2017		Production method: Flowing
Number of hours tested: 24		Choke size: 25
Was swab used during this test?	No	Oil produced prior to test: 20637.00
PRODUCTION DURING TEST PERIOD:		
Oil (BBLs): 1449.00		Gas (MCF): 1270
Gas - Oil Ratio: 876		Flowing Tubing Pressure: 3449.00
Water (BBLs): 4787		
CALCULATED 24-HOUR RATE		
Oil (BBLs): 1449.0		Gas (MCF): 1270
Oil Gravity - API - 60.:	40.6	Casing Pressure: 0.00
Water (BBLs): 4787		

CASING RECORD											
Row	Type of Casing	Casing	Hole	Setting	Multi -	Multi -	Cement	Cement	Slurry	Top of	TOC
		Size	Size	Depth	Stage Tool	Stage Shoe					
		(in.)	(in.)	(ft.)	Depth (ft.)	Depth (ft.)	Class	(sacks)	(cu. ft.)	(ft.)	By
1	Surface	13 3/8	17 1/2	1105			DIVERSE AND LITE C	1100	1922.0	SURF ACE	Circulated to Surface
2	Intermediate	10 3/4	12 1/4	5090			65:35 C POZ AND 50:50 C POZ	1180	278.7	SURF ACE	Circulated to Surface
3	Intermediate	7 5/8	9 7/8	11695	5256		5050 POZ C AND POZ H	961	2073.3	5256	Calculation
4	Intermediate	7 5/8	9 7/8	11695			5050 POZ C AND C	564	1171.6	SURF ACE	Circulated to Surface
5	Conventional Production	5 1/2	6 3/4	22435			5050DO35 H-84	1545	1854.0	4901	Calculation

LINER RECORD									
Row	Liner Size (in.)	Hole Size (in.)	Liner Top (ft.)	Liner Bottom (ft.)	Cement Class	Cement Amount (sacks)	Slurry Volume (cu. ft.)	Top of Cement (ft.)	TOC Determined By
N/A									

TUBING RECORD			
Row	Size (in.)	Depth Size (ft.)	Packer Depth (ft.)/Type
1	2 7/8	11797	11789 / AS1-X

PRODUCING/INJECTION/DISPOSAL INTERVAL			
Row	Open hole?	From (ft.)	To (ft.)
1	No	L1 12764	22287.0

ACID, FRACTURE, CEMENT SQUEEZE, CAST IRON BRIDGE PLUG, RETAINER, ETC.				
Was hydraulic fracturing treatment performed?		Yes		
Is well equipped with a downhole actuation sleeve?		No		
		If yes, actuation pressure (PSIG):		
Production casing test pressure (PSIG) prior to hydraulic fracturing treatment:		Actual maximum pressure (PSIG) during hydraulic fracturing:		
13118		12143		
Has the hydraulic fracturing fluid disclosure been reported to FracFocus disclosure registry (SWR29)?		Yes		
Row	Type of Operation	Amount and Kind of Material Used		Depth Interval (ft.)
1	Fracture	789,026 SLICKWATER BBLS AND 25,935,558 LBS PROPPANT		12764 22287

FORMATION RECORD					
Formations	Encountered	Depth TVD (ft.)	Depth MD (ft.)	Is formation isolated?	Remarks
RUSTLER - POSSIBLE FLOW; POSSIBLE USABLE QUALITY W COLBY-QUEEN	Yes	870.0	870.0	Yes	
YATES	No			No	NOT PRESENT
QUEEN-SEVEN RIVERS	No			No	NOT PRESENT
SAN ANDRES - HIGH FLOWS, H2S, CORROSIVE HOLT	No			No	NOT PRESENT
DELAWARE	Yes	5101.0	5125.0	Yes	
GLORIETA	No			No	NOT PRESENT
CLEARFORK	No			No	NOT PRESENT
WICHITA ALBANY	No			No	NOT PRESENT
BRUSHY CANYON	No			No	NOT PRESENT
CHERRY CANYON	Yes	6053.0	6077.0	Yes	
CANYON	No			No	NOT PRESENT
BONE SPRINGS	Yes	8784.0	8809.0	Yes	
MONTOYA	No			No	NOT PRESENT
WADDELL	No			No	NOT PRESENT
WOLFCAMP	Yes	11905.0	11960.0	Yes	
ATOKA	No			No	NOT PENETRATED
STRAWN	No			No	NOT PENETRATED
PENNSYLVANIAN	No			No	NOT PENETRATED
MISSISSIPPIAN	No			No	NOT PENETRATED
DEVONIAN	No			No	NOT PENETRATED
SILURIAN	No			No	NOT PENETRATED
FUSSELMAN	No			No	NOT PENETRATED
ELLENBURGER	No			No	NOT PENETRATED
Do the producing interval of this well produce H2S with a concentration in excess of 100 ppm (SWR 36)?					No
Is the completion being downhole commingled (SWR 10)?					No

REMARKS

RRC REMARKS	
<b>PUBLIC COMMENTS:</b> [RRC Staff 2018-05-07 11:42:04.449] EDL=9523 feet, max acres=704, PHANTOM (WOLFCAMP) oil or gas well	
<b>CASING RECORD :</b> KICK OFF POINT AT 11,755'	
<b>TUBING RECORD:</b>	
<b>PRODUCING/INJECTION/DISPOSAL INTERVAL :</b> FTP AND LTP 12035-22344 SEE ATTACHED AS DRILLED PLAT	
<b>ACID, FRACTURE, CEMENT SQUEEZE, CAST IRON BRIDGE PLUG, RETAINER, ETC. :</b>	
<b>POTENTIAL TEST DATA:</b>	

OPERATOR'S CERTIFICATION	
<b>Printed Name:</b> Heather Dahlgren	<b>Title:</b> Felix Admin Services
<b>Telephone No.:</b> (720) 974-2069	<b>Date Certified:</b> 05/04/2018





# RAILROAD COMMISSION OF TEXAS

1701 N. Congress  
P.O. Box 12967  
Austin, Texas 78701-2967

Form W-15

Rev. 08/2014

## CEMENTING REPORT

Cementer: Fill in shaded areas.  
Operator: Fill in other items.

### OPERATOR INFORMATION

Operator Name: FELIX ENERGY HOLDINGS Holdings LLC Operator P-5 No.: 265322  
Cementer Name: TRANS TEX CEMENTING SERVICES, LLC Cementer P-5 No.: 864412

### WELL INFORMATION

District No.: 08 County: WINKLER -WARD-  
Well No.: UL URAD 1609-21 - 1H API No.: 43-495-33843 Drilling Permit No.: 825440  
Lease Name: UL URAD 1609-21 Lease No.: #1H  
Field Name: PHANTOM (WOLF CAMP) Field No.: 71052900

### I. CASING CEMENTING DATA

Type of Casing: ☐ Conductor ☒ Surface ☐ Intermediate ☐ Liner ☐ Production  
Drilled hole size (in.): 17.5 Depth of drilled hole (ft.): 1105 1120 Est. % wash-out or hole enlargement: 12%  
Size of casing in O.D. (in.): 13.375 Casing weight (lbs/ft) and grade: J55 54.5 #/ft No. of centralizers used: 9  
Was cement circulated to ground surface (or bottom of cellar) outside casing? ☒ YES ☐ NO If no for surface casing, explain in Remarks. Setting depth shoe (ft.): 1105' MD Top of liner (ft.):  
Setting depth liner (ft.):  
Hrs. waiting on cement before drill-out: 16 Calculated top of cement (ft.): 0 Cementing date: 5/29/2017

### SLURRY

Slurry No.	No. of Sacks	Class	Additives	Volume (cu. ft.)	Height (ft.)
1	670	TRANS TEX DIVERSE	SEE REMARKS	1232	1775
2	430	TRANS TEX LITE "C"	SEE REMARKS	697	1009
3					
Total	1100			1922	2784

### II. CASING CEMENTING DATA

Type of casing: ☐ Surface ☐ Intermediate ☐ Production ☐ Tapered production ☐ Multi-stage cement slurry ☐ Multiple parallel strings  
Drilled hole size (in.): Depth of drilled hole (ft.): Est. % wash-out or hole enlargement:  
Size of casing in O.D. (in.): Casing weight (lbs/ft) and grade: No. of centralizers used:  
Tapered string drilled hole size (in.) Tapered string depth of drilled hole (ft.)  
Upper: Lower: Upper: Lower:  
Tapered string size of casing in O.D. (in.) Tapered string casing weight (lbs/ft) and grade Tapered string no. of centralizers used  
Upper: Lower: Upper: Lower: Upper: Lower:  
Was cement circulated to ground surface (or bottom of cellar) outside casing? ☒ YES ☐ NO ☐ Setting depth shoe (ft.):  
Hrs. waiting on cement before drill-out: Calculated top of cement (ft.): Cementing date:

### SLURRY

Slurry No.	No. of Sacks	Class	Additives	Volume (cu. ft.)	Height (ft.)
1					
2					
3					
Total					

### III. CASING CEMENTING DATA

Type of casing: ☐ Surface ☐ Intermediate ☐ Production ☐ Tapered production ☐ Multi-stage cement/DV ☐ Multiple parallel strings  
Drilled hole size (in.): Depth of drilled hole (ft.): Est. % wash-out or hole enlargement:  
Size of casing in O.D. (in.): Casing weight (lbs/ft) and grade: No. of centralizers used:  
Tapered string drilled hole size (in.) Tapered string depth of drilled hole (ft.)  
Upper: Lower: Upper: Lower:  
Tapered string size of casing in O.D. (in.) Tapered string casing weight (lbs/ft) and grade Tapered string no. of centralizers used  
Upper: Lower: Upper: Lower: Upper: Lower:  
Was cement circulated to ground surface (or bottom of cellar) outside casing? ☒ YES ☐ NO ☐ Setting depth shoe (ft.):  
Hrs. waiting on cement before drill-out: Calculated top of cement (ft.): Cementing date:

### SLURRY

Slurry No.	No. of Sacks	Class	Additives	Volume (cu. ft.)	Height (ft.)
1					
2					
3					
Total					



CEMENTING TO SQUEEZE, PLUG BACK OR PLUG AND ABANDON							
	PLUG #1	PLUG #2	PLUG #3	PLUG #4	PLUG #5	PLUG #6	PLUG #7
Cementing Date	4/17/2017						
Size of hole or pipe (in.)	5 1/2						
Depth to bottom of tubing or drill pipe (ft.)	4284						
Cement retainer setting depth (ft.)	4284						
CIBP setting depth (ft.)							
Amount of cement on top of CIBP (ft.)							
Sacks of cement used	200						
Slurry volume pumped (cu. ft.)	312						
Calculated top of plug (ft.)							
Measured top of plug, if tagged (ft.)							
Slurry weight (lbs/gal)	14.2#						
Class/type of cement	"C"						
Perforate and squeeze (YES/NO)	YES						
REMARKS							
TRANS TEX DIVERSE 6%GEL+2%CACL+1.5#PHENO+1/8#CELLO+1.5%CAS-2+.2CFL-1							
TRANS TEX LITE "C" 1%CACL+1/8#CELLO+.2%CF-1							
CIRCULATED CEMENT BACK 174 BBLs=531 SKS							
0							

CEMENTER'S CERTIFICATE: I declare under penalties prescribed in Sec. 91.143, Texas Natural Resources Code, that I am authorized to make this certification, that the cementing of casing and/or the placing of cement plugs in this well as shown in the report was performed by me or under my supervision, and that the cementing data and facts presented on both sides of this form are true, correct, and complete, to the best of my knowledge. This certification covers cementing data only.

J. GALVAN

Name and title of cementer's representative

TRANS TEX CEMENTING

Cementing Company

*J. Cohen*  
Signature

5019 BASIN ST

Address

MIDLAND, TX 79703

City, State, Zip Code

432-694-4900

Tel: Area Code

Number

5/29/2017

Date: mo. day yr.

OPERATOR'S CERTIFICATE: I declare under penalties prescribed in Sec. 91.143, Texas Natural Resources Code, that I am authorized to make this certification, that I have knowledge of the well data and information presented in this report, and that data and facts presented on both sides of this form are true, correct, and complete, to the best of my knowledge. This certification covers all well data.

*Edward Asuchak*  
Typed or printed name of operator's representative

*CO-MAN.*  
Title

*J. Asuchak*  
Signature

156016<sup>th</sup> St & Ste 500 Denver CO 80202  
Address City, State, Zip Code

720-606-3886  
Tel: Area Code Number

05 29 17.  
Date: mo. day yr.

### Instructions for Form W-15, Cementing Report

NOTICE: The Form W-15 must be submitted as an attachment to a Form G-1 (Gas Well Back Pressure Test, Completion or Recompletion Report, and Log), Form W-2 (Oil Well Potential Test, Completion or Recompletion Report, and Log), Form W-3 (Plugging Record), or Form W-4 (Application for Multiple Completion), any time cement is pumped in a wellbore.

A. What to file: An operator should file an original and one copy of the completed Form W-15 for each cementing company used on a well. The cementing of different casing strings on a well by one cementing company may be reported on one form. The Form W-15 should be filed with the Form W-3, Plugging Record, unless the Form W-3 is signed by the cementing company representative. When reporting dry holes, operators must complete Form W-15, in addition to Form W-3, to show any casing cemented in the hole.

B. How to file: An oil and gas completion report and Form W-15 may be filed online using the Commission's Online System

(<https://webapps.rrc.state.tx.us/security/login.do>) or a paper copy of the form may be mailed to the Commission in Austin (P.O. Box 12967, Austin, Texas 78712967).

C. Surface casing: An operator must set and cement sufficient surface casing to protect all usable-quality water strata, as defined by the Groundwater Advisory Unit in Austin. Sufficient cement shall be used to fill the annular space outside the casing from the shoe to the ground surface or to the bottom of the cellar. Before drilling a well, an operator must obtain a letter from the Groundwater Advisory Unit stating the protection depth. Surface casing should not be set deeper than 200 feet below the specified depth without prior approval from the Commission.

To plug and abandon a well, operators must use only cementers approved by the Commission's Director of Field Operations in accordance with SWR 14 ([http://info.sos.state.tx.us/pls/pub/readtac\\$ext.TacPage?sl=R&app=9&p\\_dir=&p\\_rloc=&p\\_tloc=&p\\_ploc=&p\\_tac=&ti=16&pt=1&ch=3&ri=14](http://info.sos.state.tx.us/pls/pub/readtac$ext.TacPage?sl=R&app=9&p_dir=&p_rloc=&p_tloc=&p_ploc=&p_tac=&ti=16&pt=1&ch=3&ri=14)). Cementing companies, service companies, or operators can qualify as approved cementers by demonstrating that they are able to mix and pump cement in compliance with Commission rules and regulations.

D. Estimated % wash-out: If the estimated % wash-out is less than 20% (or 30% along the Gulf Coast), provide supporting documentation such as a caliper log to show how the estimated % wash-out was obtained.

E. Multi-stage cement: An operator must report the multi-stage cement shoe in II. Casing Cementing Data section by selecting the type of casing and Multi-stage cement shoe. The operator must report the multi-stage cement tool in III. Casing Cementing Data section by selecting the type of casing and Multi-stage cement/DV tool.

F. Multiple parallel strings: An operator should file the Form W-15 as an attachment to the Form W-4, Application for Multiple Completion. An operator may be required to submit multiple Form W-15s to show all data for multiple parallel strings.

G. Slurry data: If cement job exceeds three slurries, continue the list of slurries in the Slurry table in the subsequent Casing Cementing Data box.





## RAILROAD COMMISSION OF TEXAS

1701 N. Congress

P.O. Box 12967

Austin, Texas 78701-2967

## CEMENTING REPORT

Form W-15

Rev. 08/2014

Cementer: Fill in shaded areas.

Operator: Fill in other items.

## OPERATOR INFORMATION

Operator Name: <b>FELIX ENERGY</b>	Operator P-5 No.:
Cementer Name: <b>Schlumberger</b>	Cementer P-5 No.: <b>754900</b>

## WELL INFORMATION

District No.: <b>09</b>	County: <b>Winkler</b>
Well No.: <b>211H-1H</b>	API No.: <b>42-495-33843</b> Drilling Permit No.: <b>025440</b>
Lease Name: <b>UL URAD 1609-21</b>	Lease No.:
Field Name: <b>Phantom (Wolf camp)</b>	Field No.: <b>71052900</b>

## I. CASING CEMENTING DATA

Type of casing: <input type="checkbox"/> Conductor <input type="checkbox"/> Surface <input checked="" type="checkbox"/> Intermediate <input type="checkbox"/> Liner <input type="checkbox"/> Production		
Drilled hole size (in.): <b>12 1/4</b>	Depth of drilled hole (ft.): <b>5105</b>	Est. % wash-out or hole enlargement: <b>20%</b> Remarks
Size of casing in O.D. (in.): <b>10 3/4</b>	Casing weight (lbs/ft) and grade: <b>45.5#J55</b>	No. of centralizers used: <b>40</b>
Was cement circulated to ground surface (or bottom of cellar) outside casing? <input checked="" type="checkbox"/> Yes <input type="checkbox"/> No If no for surface casing, explain in Remarks.	Setting depth shoe (ft.): <b>5090</b>	Top of liner (ft.):
		Setting depth liner (ft.):
Hrs. waiting on cement before drill-out: <b>10</b>	Calculated top of cement (ft.): <b>0</b>	Cementing date: <b>3-Jun-17</b>

## SLURRY

Slurry No.	No. of Sacks	Class	Additives	Volume (cu.ft.)	Height (ft.)
1	927	65:35 C POZ	Remarks	243.4	4490
2	253	50:50 C POZ	Remarks	35.3	600
3					
Total	1180			278.7	5090

## II. CASING CEMENTING DATA

Type of casing: <input type="checkbox"/> Surface <input type="checkbox"/> Intermediate <input type="checkbox"/> Production <input type="checkbox"/> Tapered production <input type="checkbox"/> Multi-stage cement shoe <input type="checkbox"/> Multiple parallel strings		
Drilled hole size (in.):	Depth of drilled hole (ft.):	Est. % wash-out or hole enlargement:
Size of casing in O.D. (in.):	Casing weight (lbs/ft) and grade:	No. of centralizers used:
Tapered string drilled hole size (in.)	Tapered string depth of drilled hole (ft.)	
Upper:	Lower:	Upper:
Tapered string size of casing in O.D. (in.)	Tapered string casing weight(lbs/ft) and grade	Tapered string no. of centralizers used
Upper:	Lower:	Upper:
Was cement circulated to ground surface (or bottom of cellar) outside casing? <input type="checkbox"/> Yes <input type="checkbox"/> No	Setting depth tool (ft.):	
Hrs. waiting on cement before drill-out:	Calculated top of cement (ft.):	Cementing date:

## SLURRY

Slurry No.	No. of Sacks	Class	Additives	Volume (cu.ft.)	Height (ft.)
1					
2					
3					
Total					

## III. CASING CEMENTING DATA

Type of casing: <input type="checkbox"/> Surface <input type="checkbox"/> Intermediate <input type="checkbox"/> Production <input type="checkbox"/> Tapered production <input type="checkbox"/> Multi-stage cement/DV tool <input type="checkbox"/> Multiple parallel strings		
Drilled hole size (in.):	Depth of drilled hole (ft.):	Est. % wash-out or hole enlargement:
Size of casing in O.D. (in.):	Casing weight (lbs/ft) and grade:	No. of centralizers used:
Tapered string drilled hole size (in.)	Tapered string depth of drilled hole (ft.)	
Upper:	Lower:	Upper:
Tapered string size of casing in O.D. (in.)	Tapered string casing weight(lbs/ft) and grade	Tapered string no. of centralizers used
Upper:	Lower:	Upper:
Was cement circulated to ground surface (or bottom of cellar) outside casing? <input type="checkbox"/> Yes <input type="checkbox"/> No	Setting depth tool (ft.):	
Hrs. waiting on cement before drill-out:	Calculated top of cement (ft.):	Cementing date:

## SLURRY

Slurry No.	No. of Sacks	Class	Additives	Volume (cu.ft.)	Height (ft.)
1					
2					
3					
Total					



CEMENTING TO SQUEEZE, PLUG BACK OR PLUG AND ABANDON							
	PLUG #1	PLUG #2	PLUG #3	PLUG #4	PLUG #5	PLUG #6	PLUG #7
Cementing Date							
Size of hole or pipe (in.)							
Depth to bottom of tubing or drill pipe (ft.)							
Cement retainer setting depth (ft.)							
CIBP setting depth (ft.)							
Amount of cement on top of CIBP (ft.)							
Sacks of cement used							
Slurry volume pumped (cu. ft.)							
Calculated top of plug (ft.)							
Measured top of plug, if tagged (ft.)							
Slurry weight (lbs/gal)							
Class/type of cement							
Perforate and squeeze (YES/NO)							

REMARKS
#1: 61PPS D903 + 26PPS D035 + 4% D020 + 0.13PPS D130 + 0.1% D065 + 0.02GPS D047 + 0.1% D013 + 8% D044
#2: 47PPS D903 + 37PPS D035 + 1% D020 + 0.13PPS D130 + 0.1% D065 + 0.02GPS D047 + 0.3% D013 + 5% D044
#3:
20 BBL CEMENT / 56 SACKS TO SURFACE

CEMENTER'S CERTIFICATE: I declare under penalties prescribed in Sec. 91.143, Texas Natural Resources Code, that I am authorized to make this certification, that the cementing of casing and/or the placing of cement plugs in this well as shown in the report was performed by me or under my supervision, and that the cementing data and facts presented on both sides of this form are true, correct, and complete, to the best of my knowledge. This certification covers cementing data only.

GREG SULLIVAN, FE		Schlumberger		Greg Sullivan	
Name and title of cementer's representative		Cementing Company		Signature	
7104 W County Rd 116	Midland	TX	79706	(432) 681-1100	June 3, 2017
Address	City,	State,	Zip Code	Tel: Area Code Number	Date: mo. day yr.

OPERATOR'S CERTIFICATE: I declare under penalties prescribed in Sec. 91.143, Texas Natural Resources Code, that I am authorized to make this certification, that I have knowledge of the well data and information presented in this report, and that data and facts presented on both sides of this form are true, correct, and complete, to the best of my knowledge. This certification covers all well data.

HEATHER DAHLGREN		ENG TECH		[Signature]	
Typed or printed name of operator's representative		Title		Signature	
153016th St Ste 500	Denver	CO	80202	720-974-2069	3/3/2018
Address	City,	State,	Zip Code	Tel: Area Code Number	Date: mo. day yr.

### Instructions for Form W-15, Cementing Report

NOTICE: The Form W-15 must be submitted as an attachment to a Form G-1 (Gas Well Back Pressure Test, Completion or Recompletion Report, and Log), Form W-2 (Oil Well Potential Test, Completion or Recompletion Report, and Log), Form W-3 (Plugging Record), or Form W-4 (Application for Multiple Completion), any time cement is pumped in a wellbore.

- What to file:** An operator should file an original and one copy of the completed Form W-15 for each cementing company used on a well. The cementing of different casing strings on a well by one cementing company may be reported on one form.  
The Form W-15 should be filed with the Form W-3, Plugging Record, unless the Form W-3 is signed by the cementing company representative. When reporting dry holes, operators must complete Form W-15, in addition to Form W-3, to show any casing cemented in the hole.
- How to file:** An oil and gas completion report and Form W-15 may be filed online using the Commission's Online System (<https://webapps.rrc.state.tx.us/security/login.do>) or a paper copy of the form may be mailed to the Commission in Austin (P.O. Box 12967, Austin, Texas 78711- 2967).
- Surface casing:** An operator must set and cement sufficient surface casing to protect all usable-quality water strata, as defined by the Groundwater Advisory Unit in Austin. Sufficient cement shall be used to fill the annular space outside the casing from the shoe to the ground surface or to the bottom of the cellar. Before drilling a well, an operator must obtain a letter from the Groundwater Advisory Unit stating the protection depth. Surface casing should not be set deeper than 200 feet below the specified depth without prior approval from the Commission.  
To plug and abandon a well, operators must use only cementers approved by the Commission's Director of Field Operations in accordance with SWR 14 ([http://info.sos.state.tx.us/pls/pub/readtac\\$ext.TacPage?sl=R&app=9&p\\_dir=&p\\_rloc=&p\\_tloc=&p\\_ploc=&pg=1&p\\_tac=&ti=16&pt=1&ch=3&rl=14](http://info.sos.state.tx.us/pls/pub/readtac$ext.TacPage?sl=R&app=9&p_dir=&p_rloc=&p_tloc=&p_ploc=&pg=1&p_tac=&ti=16&pt=1&ch=3&rl=14)). Cementing companies, service companies, or operators can qualify as approved cementers by demonstrating that they are able to mix and pump cement in compliance with Commission rules and regulations.
- Estimated % wash-out:** If the estimated % wash-out is less than 20% (or 30% along the Gulf Coast), provide supporting documentation such as a caliper log to show how the estimated % wash-out was obtained.
- Multi-stage cement:** An operator must report the multi-stage cement shoe in II. Casing Cementing Data section by selecting the type of casing and Multi-stage cement shoe. The operator must report the multi-stage cement tool in III. Casing Cementing Data section by selecting the type of casing and Multi-stage cement/DV tool.
- Multiple parallel strings:** An operator should file the Form W-15 as an attachment to the Form W-4, Application for Multiple Completion. An operator may be required to submit multiple Form W-15s to show all data for multiple parallel strings.
- Slurry data:** If cement job exceeds three slurries, continue the list of slurries in the Slurry table in the subsequent Casing Cementing Data box.





## RAILROAD COMMISSION OF TEXAS

1701 N. Congress

P.O. Box 12967

Austin, Texas 78701-2967

## CEMENTING REPORT

Form W-15

Rev. 08/2014

Cementer: Fill in shaded areas.

Operator: Fill in other items.

## OPERATOR INFORMATION

Operator Name:	0	Operator P-5 No.:	
Cementer Name:	Schlumberger	Cementer P-5 No.:	754900

## WELL INFORMATION

District No.:	09	County:	WINKLER
Well No.:	1H	API No.:	42-495-33843
Lease Name:	UL URAD 1609-21-4H	Drilling Permit No.:	025440
Field Name:	Phantom (Wolfcamp)	Lease No.:	
		Field No.:	71052900

## I. CASING CEMENTING DATA

Type of casing:	<input type="checkbox"/> Conductor	<input type="checkbox"/> Surface	<input type="checkbox"/> Intermediate	<input type="checkbox"/> Liner	<input type="checkbox"/> Production
Drilled hole size (in.):		Depth of drilled hole (ft.):		Est. % wash-out or hole enlargement:	
Size of casing in O.D. (in.):		Casing weight (lbs/ft) and grade:		No. of centralizers used:	
Was cement circulated to ground surface (or bottom of cellar) outside casing?			Setting depth shoe (ft.):	Top of liner (ft.):	
<input type="checkbox"/> Yes <input type="checkbox"/> No If no for surface casing, explain in Remarks.				Setting depth liner (ft.):	
Hrs. waiting on cement before drill-out:		Calculated top of cement (ft.):	Cementing date:		

## SLURRY

Slurry No.	No. of Sacks	Class	Additives	Volume (cu.ft.)	Height (ft.)
1					
2					
3					
Total					

## II. CASING CEMENTING DATA

Type of casing:	<input type="checkbox"/> Surface	<input type="checkbox"/> Intermediate	<input type="checkbox"/> Production	<input type="checkbox"/> Tapered production	<input checked="" type="checkbox"/> Multi-stage cement shoe	<input type="checkbox"/> Multiple parallel strings
Drilled hole size (in.):	9.88	Depth of drilled hole (ft.):	11710 11700	Est. % wash-out or hole enlargement:		20%
Size of casing in O.D. (in.):	7 5/8	Casing weight (lbs/ft) and grade:	29.7 P110	No. of centralizers used:		49
Tapered string drilled hole size (in.)			Tapered string depth of drilled hole (ft.)			
Upper: Lower:			Upper: Lower:			
Tapered string size of casing in O.D. (in.)			Tapered string casing weight (lbs/ft) and grade		Tapered string no. of centralizers used	
Upper: Lower:			Upper: Lower:		Upper: Lower:	
Was cement circulated to ground surface (or bottom of cellar) outside casing?			<input type="checkbox"/> Yes <input checked="" type="checkbox"/> No		Setting depth tool (ft.):	
Hrs. waiting on cement before drill-out:			Calculated top of cement (ft.):		Cementing date:	
			5256		12-Jun-17	

## SLURRY

Slurry No.	No. of Sacks	Class	Additives	Volume (cu.ft.)	Height (ft.)
1	860	50:50 POZ C	Remarks	1917.8	5950
2	101	50:50 POZ H	Remarks	155.5	500
3					
Total	961			2073.3	6450

## III. CASING CEMENTING DATA

Type of casing:	<input type="checkbox"/> Surface	<input type="checkbox"/> Intermediate	<input type="checkbox"/> Production	<input type="checkbox"/> Tapered production	<input checked="" type="checkbox"/> Multi-stage cement/DV tool	<input type="checkbox"/> Multiple parallel strings
Drilled hole size (in.):	9.88	Depth of drilled hole (ft.):	11710 11700	Est. % wash-out or hole enlargement:		
Size of casing in O.D. (in.):	7 5/8	Casing weight (lbs/ft) and grade:	29.7 P110	No. of centralizers used:		
Tapered string drilled hole size (in.)			Tapered string depth of drilled hole (ft.)			
Upper: Lower:			Upper: Lower:			
Tapered string size of casing in O.D. (in.)			Tapered string casing weight (lbs/ft) and grade		Tapered string no. of centralizers used	
Upper: Lower:			Upper: Lower:		Upper: Lower:	
Was cement circulated to ground surface (or bottom of cellar) outside casing?			<input checked="" type="checkbox"/> Yes <input type="checkbox"/> No		Setting depth tool (ft.):	
Hrs. waiting on cement before drill-out:			Calculated top of cement (ft.):		Cementing date:	
5			Surface		12-Jun-17	

## SLURRY


Slurry No.	No. of Sacks	Class	Additives	Volume (cu.ft.)	Height (ft.)
1	514	50:50 POZ C	Remarks	1105.1	4950
2	50	C	Remarks	66.5	300
3					
Total	564			1171.6	5250



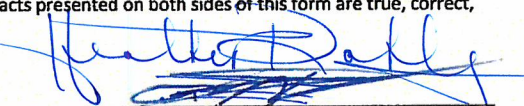
CEMENTING TO SQUEEZE, PLUG BACK OR PLUG AND ABANDON							
	PLUG #1	PLUG #2	PLUG #3	PLUG #4	PLUG #5	PLUG #6	PLUG #7
Cementing Date							
Size of hole or pipe (in.)							
Depth to bottom of tubing or drill pipe (ft.)							
Cement retainer setting depth (ft.)							
CIBP setting depth (ft.)							
Amount of cement on top of CIBP (ft.)							
Sacks of cement used							
Slurry volume pumped (cu. ft.)							
Calculated top of plug (ft.)							
Measured top of plug, if tagged (ft.)							
Slurry weight (lbs/gal)							
Class/type of cement							
Perforate and squeeze (YES/NO)							

REMARKS
<b>Stage 1 Lead Additives: 50:50 POZ + 10%D020 + 0.8%D013 + 0.25%D079 + 0.04gal/skD177</b> <b>Stage 1 Tail Additives: 50:50 POZ + 3%D020+0.2%D013+0.1%D065+0.3%D238+0.1%D208+0.25%D079</b> <b>Stage 2 Lead Additives: 50:50 POZ + 5% D020 + 0.25% D079</b> <b>Stage 2 Tail Additives: CLASS C + 0.03gal/sk D177</b>

CEMENTER'S CERTIFICATE: I declare under penalties prescribed in Sec. 91.143, Texas Natural Resources Code, that I am authorized to make this certification, that the cementing of casing and/or the placing of cement plugs in this well as shown in the report was performed by me or under my supervision, and that the cementing data and facts presented on both sides of this form are true, correct, and complete, to the best of my knowledge. This certification covers cementing data only.

Tim Hammer, FS				Schlumberger			
Name and title of cementer's representative				Cementing Company		Signature	
7104 W County Rd 116	Midland	TX	79706	(432) 681-1100		June 12, 2017	
Address	City,	State,	Zip Code	Tel: Area Code	Number	Date: mo. day yr.	

OPERATOR'S CERTIFICATE: I declare under penalties prescribed in Sec. 91.143, Texas Natural Resources Code, that I am authorized to make this certification, that I have knowledge of the well data and information presented in this report, and that data and facts presented on both sides of this form are true, correct, and complete, to the best of my knowledge. This certification covers all well data.

HEATHER DANLORSEN				ENGTECH			
Typed or printed name of operator's representative				Title		Signature	
153016th St.	Denver	CO	80202	720-974-2069		3/3/2018	
Address	City,	State,	Zip Code	Tel: Area Code	Number	Date: mo. day yr.	

### Instructions for Form W-15, Cementing Report

NOTICE: The Form W-15 must be submitted as an attachment to a Form G-1 (Gas Well Back Pressure Test, Completion or Recompletion Report, and Log), Form W-2 (Oil Well Potential Test, Completion or Recompletion Report, and Log), Form W-3 (Plugging Record), or Form W-4 (Application for Multiple Completion), any time cement is pumped in a wellbore.

- What to file:** An operator should file an original and one copy of the completed Form W-15 for each cementing company used on a well. The cementing of different casing strings on a well by one cementing company may be reported on one form. The Form W-15 should be filed with the Form W-3, Plugging Record, unless the Form W-3 is signed by the cementing company representative. When reporting dry holes, operators must complete Form W-15, in addition to Form W-3, to show any casing cemented in the hole.
- How to file:** An oil and gas completion report and Form W-15 may be filed online using the Commission's Online System (<https://webapps.rrc.state.tx.us/security/login.do>) or a paper copy of the form may be mailed to the Commission in Austin (P.O. Box 12967, Austin, Texas 78711- 2967).
- Surface casing:** An operator must set and cement sufficient surface casing to protect all usable-quality water strata, as defined by the Groundwater Advisory Unit in Austin. Sufficient cement shall be used to fill the annular space outside the casing from the shoe to the ground surface or to the bottom of the cellar. Before drilling a well, an operator must obtain a letter from the Groundwater Advisory Unit stating the protection depth. Surface casing should not be set deeper than 200 feet below the specified depth without prior approval from the Commission.  
To plug and abandon a well, operators must use only cementers approved by the Commission's Director of Field Operations in accordance with SWR 14 ([http://info.sos.state.tx.us/pls/pub/readtac\\$ext.TacPage?sl=R&app=9&p\\_dir=&p\\_rloc=&p\\_tloc=&p\\_ploc=&pg=1&p\\_tac=&ti=16&pt=1&ch=3&rl=14](http://info.sos.state.tx.us/pls/pub/readtac$ext.TacPage?sl=R&app=9&p_dir=&p_rloc=&p_tloc=&p_ploc=&pg=1&p_tac=&ti=16&pt=1&ch=3&rl=14)). Cementing companies, service companies, or operators can qualify as approved cementers by demonstrating that they are able to mix and pump cement in compliance with Commission rules and regulations.
- Estimated % wash-out:** If the estimated % wash-out is less than 20% (or 30% along the Gulf Coast), provide supporting documentation such as a caliper log to show how the estimated % wash-out was obtained.
- Multi-stage cement:** An operator must report the multi-stage cement shoe in II. Casing Cementing Data section by selecting the type of casing and Multi-stage cement shoe. The operator must report the multi-stage cement tool in III. Casing Cementing Data section by selecting the type of casing and Multi-stage cement/DV tool.
- Multiple parallel strings:** An operator should file the Form W-15 as an attachment to the Form W-4, Application for Multiple Completion. An operator may be required to submit multiple Form W-15s to show all data for multiple parallel strings.
- Slurry data:** If cement job exceeds three slurries, continue the list of slurries in the Slurry table in the subsequent Casing Cementing Data box.





## RAILROAD COMMISSION OF TEXAS

1701 N. Congress

P.O. Box 12967

Austin, Texas 78701-2967

## CEMENTING REPORT

Form W-15

Rev. 08/2014

Cementer: Fill in shaded areas.

Operator: Fill in other items.

## OPERATOR INFORMATION

Operator Name: Felix	Operator P-5 No.:
Cementer Name: Schlumberger	Cementer P-5 No.: 754900

## WELL INFORMATION

District No.: 09	County: Winkler
Well No.: 16-9211H-1H	API No.: 42-495-33843 Drilling Permit No.: 925440
Lease Name: UL Urad 1609-21	Lease No.:
Field Name: Phantom (Wolfcamp)	Field No.: 71052900

## I. CASING CEMENTING DATA

Type of casing: <input type="checkbox"/> Conductor <input type="checkbox"/> Surface <input type="checkbox"/> Intermediate <input type="checkbox"/> Liner <input checked="" type="checkbox"/> Production	Drilled hole size (in.): 6 3/4	Depth of drilled hole (ft.): 22453	Est. % wash-out or hole enlargement: 20% Remarks
Size of casing in O.D. (in.): 5 1/2	Casing weight (lbs/ft) and grade: 23# P110	No. of centralizers used: 0	
Was cement circulated to ground surface (or bottom of cellar) outside casing? <input type="checkbox"/> Yes <input checked="" type="checkbox"/> No If no for surface casing, explain in Remarks.	Setting depth shoe (ft.): 22435	Top of liner (ft.):	
		Setting depth liner (ft.):	
Hrs. waiting on cement before drill-out:	Calculated top of cement (ft.): 4901	Cementing date: 4-Jul-17	

## SLURRY

Slurry No.	No. of Sacks	Class	Additives	Volume (cu.ft.)	Height (ft.)
1	1545	5050D035H-84	Remarks	1854.0	17540
2					
3					
Total	1545			1854.0	17540

## II. CASING CEMENTING DATA

Type of casing: <input type="checkbox"/> Surface <input type="checkbox"/> Intermediate <input type="checkbox"/> Production <input type="checkbox"/> Tapered production <input type="checkbox"/> Multi-stage cement shoe <input type="checkbox"/> Multiple parallel strings	Drilled hole size (in.):	Depth of drilled hole (ft.):	Est. % wash-out or hole enlargement:
Size of casing in O.D. (in.):	Casing weight (lbs/ft) and grade:	No. of centralizers used:	
Tapered string drilled hole size (in.)	Tapered string depth of drilled hole (ft.)		
Upper: Lower:	Upper: Lower:		
Tapered string size of casing in O.D. (in.)	Tapered string casing weight (lbs/ft) and grade	Tapered string no. of centralizers used	
Upper: Lower:	Upper: Lower:	Upper: Lower:	
Was cement circulated to ground surface (or bottom of cellar) outside casing? <input type="checkbox"/> Yes <input type="checkbox"/> No	Setting depth tool (ft.):		
Hrs. waiting on cement before drill-out:	Calculated top of cement (ft.):	Cementing date:	

## SLURRY

Slurry No.	No. of Sacks	Class	Additives	Volume (cu.ft.)	Height (ft.)
1					
2					
3					
Total					

## III. CASING CEMENTING DATA

Type of casing: <input type="checkbox"/> Surface <input type="checkbox"/> Intermediate <input type="checkbox"/> Production <input type="checkbox"/> Tapered production <input type="checkbox"/> Multi-stage cement/DV tool <input type="checkbox"/> Multiple parallel strings	Drilled hole size (in.):	Depth of drilled hole (ft.):	Est. % wash-out or hole enlargement:
Size of casing in O.D. (in.):	Casing weight (lbs/ft) and grade:	No. of centralizers used:	
Tapered string drilled hole size (in.)	Tapered string depth of drilled hole (ft.)		
Upper: Lower:	Upper: Lower:		
Tapered string size of casing in O.D. (in.)	Tapered string casing weight (lbs/ft) and grade	Tapered string no. of centralizers used	
Upper: Lower:	Upper: Lower:	Upper: Lower:	
Was cement circulated to ground surface (or bottom of cellar) outside casing? <input type="checkbox"/> Yes <input type="checkbox"/> No	Setting depth tool (ft.):		
Hrs. waiting on cement before drill-out:	Calculated top of cement (ft.):	Cementing date:	

## SLURRY

Slurry No.	No. of Sacks	Class	Additives	Volume (cu.ft.)	Height (ft.)
1					
2					
3					
Total					



CEMENTING TO SQUEEZE, PLUG BACK OR PLUG AND ABANDON							
	PLUG #1	PLUG #2	PLUG #3	PLUG #4	PLUG #5	PLUG #6	PLUG #7
Cementing Date							
Size of hole or pipe (in.)							
Depth to bottom of tubing or drill pipe (ft.)							
Cement retainer setting depth (ft.)							
CIBP setting depth (ft.)							
Amount of cement on top of CIBP (ft.)							
Sacks of cement used							
Slurry volume pumped (cu. ft.)							
Calculated top of plug (ft.)							
Measured top of plug, if tagged (ft.)							
Slurry weight (lbs/gal)							
Class/type of cement							
Perforate and squeeze (YES/NO)							

REMARKS
#1: 5050D035H-84+0.2%D255+0.5%D800+2%D020+0.05%D208+0.02D047+0.01D177
#2:
#3:
#4:

CEMENTER'S CERTIFICATE: I declare under penalties prescribed in Sec. 91.143, Texas Natural Resources Code, that I am authorized to make this certification, that the cementing of casing and/or the placing of cement plugs in this well as shown in the report was performed by me or under my supervision, and that the cementing data and facts presented on both sides of this form are true, correct, and complete, to the best of my knowledge. This certification covers cementing data only.

Clint Thompson, Field Specialist				Schlumberger			
Name and title of cementer's representative				Cementing Company		Signature	
7104 W County Rd 116	Midland	TX	79706	(432) 681-1100		July 4, 2017	
Address	City	State	Zip Code	Tel: Area Code Number		Date: mo. day yr.	

OPERATOR'S CERTIFICATE: I declare under penalties prescribed in Sec. 91.143, Texas Natural Resources Code, that I am authorized to make this certification, that I have knowledge of the well data and information presented in this report, and that data and facts presented on both sides of this form are true, correct, and complete, to the best of my knowledge. This certification covers all well data.

HEATHER DAHLGREN ENG TECH				Title		Signature	
1530 16th St. 500 Denver CO 80202				720.974-2069 3/3/18		07/03/17	
Address City, State, Zip Code				Tel: Area Code Number		Date: mo. day yr.	

### Instructions for Form W-15, Cementing Report

NOTICE: The Form W-15 must be submitted as an attachment to a Form G-1 (Gas Well Back Pressure Test, Completion or Recompletion Report, and Log), Form W-2 (Oil Well Potential Test, Completion or Recompletion Report, and Log), Form W-3 (Plugging Record), or Form W-4 (Application for Multiple Completion), any time cement is pumped in a wellbore.

- What to file:** An operator should file an original and one copy of the completed Form W-15 for each cementing company used on a well. The cementing of different casing strings on a well by one cementing company may be reported on one form. The Form W-15 should be filed with the Form W-3, Plugging Record, unless the Form W-3 is signed by the cementing company representative. When reporting dry holes, operators must complete Form W-15, in addition to Form W-3, to show any casing cemented in the hole.
- How to file:** An oil and gas completion report and Form W-15 may be filed online using the Commission's Online System (<https://webapps.rrc.state.tx.us/security/login.do>) or a paper copy of the form may be mailed to the Commission in Austin (P.O. Box 12967, Austin, Texas 78711-2967).
- Surface casing:** An operator must set and cement sufficient surface casing to protect all usable-quality water strata, as defined by the Groundwater Advisory Unit in Austin. Sufficient cement shall be used to fill the annular space outside the casing from the shoe to the ground surface or to the bottom of the cellar. Before drilling a well, an operator must obtain a letter from the Groundwater Advisory Unit stating the protection depth. Surface casing should not be set deeper than 200 feet below the specified depth without prior approval from the Commission.  
To plug and abandon a well, operators must use only cementers approved by the Commission's Director of Field Operations in accordance with SWR 14 ([http://info.sos.state.tx.us/pls/pub/readtac\\$ext.TacPage?sl=R&app=9&p\\_dir=&p\\_rloc=&p\\_tloc=&p\\_ploc=&pg=1&p\\_tac=&ti=16&pt=1&ch=3&rl=14](http://info.sos.state.tx.us/pls/pub/readtac$ext.TacPage?sl=R&app=9&p_dir=&p_rloc=&p_tloc=&p_ploc=&pg=1&p_tac=&ti=16&pt=1&ch=3&rl=14)). Cementing companies, service companies, or operators can qualify as approved cementers by demonstrating that they are able to mix and pump cement in compliance with Commission rules and regulations.
- Estimated % wash-out:** If the estimated % wash-out is less than 20% (or 30% along the Gulf Coast), provide supporting documentation such as a caliper log to show how the estimated % wash-out was obtained.
- Multi-stage cement:** An operator must report the multi-stage cement shoe in II. Casing Cementing Data section by selecting the type of casing and Multi-stage cement shoe. The operator must report the multi-stage cement tool in III. Casing Cementing Data section by selecting the type of casing and Multi-stage cement/DV tool.
- Multiple parallel strings:** An operator should file the Form W-15 as an attachment to the Form W-4, Application for Multiple Completion. An operator may be required to submit multiple Form W-15s to show all data for multiple parallel strings.
- Slurry data:** If cement job exceeds three slurries, continue the list of slurries in the Slurry table in the subsequent Casing Cementing Data box.



Tracking No.: 189132

This facsimile L-1 was generated electronically from data submitted to the RRC.

## Instructions

**When to File Form L-1:**

- with Forms G-1, W-2, and GT-1 for new and deepened gas, oil, and geothermal wells
- with Form W-3 for plugged dry holes
- when sending in a log which was held under a request for confidentiality and the period for confidentiality has not yet expired.

**When is Form L-1 NOT required:**

- with Forms W-2, G-1, and GT-1 filed for injection wells, disposal wells, water supply wells, service wells, re-test wells, re-classifications, and plugbacks of oil, gas or geothermal wells
- with Form W-3 for plugging of other than a dry hole

**Where to File Form L-1:**

- with the appropriate Commission district office

**Filling out Form L-1:**

- Section I and the signature section must be filled out for all wells
- complete only the appropriate part of Section II

**Type of log required:**

- any wireline survey run for the purpose of obtaining lithology, porosity, or resistivity information
- no more than one such log is required but it must be of the subject well
- if such log is NOT run on the subject well, do NOT substitute any other type of log; just select Section II, Part A below

## SECTION I. IDENTIFICATION

Operator Name: FELIX ENERGY HOLDINGS II, LLC	District No. 08	Completion Date: 08/19/2017
Field Name PHANTOM (WOLFCAMP)	Drilling Permit No. 825440	
Lease Name UL URAD 1609-21	Lease/ID No. 49852	Well No. 1H
County WINKLER	API No. 42- 495-33843	

## SECTION II. LOG STATUS (Complete either A or B)

☐ A. BASIC ELECTRIC LOG NOT RUN☒ B. BASIC ELECTRIC LOG RUN. (Select one)

- ☒ 1. Confidentiality is requested and a copy of the header for each log that has been run on the well is attached.
- ☐ 2. Confidentiality already granted on basic electric log covering this interval (applicable to deepened wells only).
- ☐ 3. Basic electric log covering this interval already on file with Commission (applicable to deepened wells only).
- ☐ 4. Log attached to (select one):

☐ (a) Form L-1 (this form). If the company/lease name on log is different from that shown in Section I, please enter name on log here: \_\_\_\_\_

Check here if attached log is being submitted after being held confidential. ☐

☐ (b) Form P-7, Application for Discovery Allowable and New Field Designation.

☐ (c) Form W-4, Application for Multiple Completion:

Lease or ID No(s). \_\_\_\_\_

Well No(s). \_\_\_\_\_

Heather Dahlgren

Signature

FELIX ENERGY HOLDINGS II, LLC

Name (print)

Felix Admin Services

Title

(720) 974-2069

Phone

03/16/2018

Date

-FOR RAILROAD COMMISSION USE ONLY-



1. Field name exactly as shown on proration schedule <b>PHANTOM (WOLFCAMP)</b>			2. Lease name as shown on proration schedule <b>UL URAD 1609-21</b>		
3. Current operator name exactly as shown on P-5 Organization Report <b>FELIX ENERGY HOLDINGS II, LLC</b>			4. Operator P-5 no. <b>265322</b>	5. Oil Lse/Gas ID no <b>49852</b>	6. County <b>WINKLER</b>
8. Operator address including city, state, and zip code <b>FELIX ENERGY 1530 16TH ST SUITE 500 DENVER, CO 80202</b>			7. RRC district <b>08</b>		
			9. Well no(s) ( <i>see instruction E</i> ) <b>1H</b>		
			10. Classification <input checked="" type="checkbox"/> Oil <input type="checkbox"/> Gas <input type="checkbox"/> Other ( <i>see instruction A</i> )		11. Effective Date <b>08/19/2017</b>
12. Purpose of Filing. (Complete section a or b below.) ( <i>See instructions B and G</i> )					
<b>a. Change of:</b> <input type="checkbox"/> operator <input type="checkbox"/> oil or condensate gatherer <input type="checkbox"/> gas gatherer <input type="checkbox"/> gas purchaser <input type="checkbox"/> gas purchaser system code <input type="checkbox"/> field name from _____ <input type="checkbox"/> lease name from _____					
<b>-- OR --</b>					
<b>b. New RRC Number for:</b> <input checked="" type="checkbox"/> oil lease <input type="checkbox"/> gas well <b>Due to:</b> <input checked="" type="checkbox"/> new completion or recompletion <input type="checkbox"/> reclass oil to gas <input type="checkbox"/> reclass gas to oil <input type="checkbox"/> other well (specify) _____ <input type="checkbox"/> consolidation, unitization, or subdivision (oil lease only)					
13. Authorized GAS WELL GAS or CASINGHEAD GAS Gatherer(s) and/or Purchaser(s). ( <i>See instruction G</i> ).					
Gatherer	Purchaser	Name of GAS WELL GAS or CASINGHEAD GAS Gatherer(s) or Purchaser(s) As Indicated in Columns to the Left (Attach an additional sheet in same format if more space is needed)	Purchaser's RRC Assigned System Code	Percent of Take	Full-well stream
X	X	TARGA DELAWARE LLC(836022)	0001	100.0	
14. Authorized OIL or CONDENSATE Gatherer(s). ( <i>See instruction G</i> ).					
Name of OIL or CONDENSATE Gatherer(s) - List Highest Volume Gatherer First (Attach an additional sheet in same format if more space is needed)					Percent of Take
WESTERN REFINING COMPANY, L.P.(912206)					100.0
<b>RRC USE ONLY:</b> Reviewer's initials: <u>RRC Staff</u> Approval date: <u>05/09/2018</u>					
<b>15. PREVIOUS OPERATOR CERTIFICATION FOR CHANGE OF OPERATOR P-4 FILING.</b> Being the PREVIOUS OPERATOR, I certify that operating responsibility for the well(s) designated in this filing, located on the subject lease has been transferred in its entirety to the above named Current Operator. I understand, as Previous Operator, that designation of the above named operator as Current Operator is not effective until this certificate is approved by the Commission.					
Name of Previous Operator _____			Signature _____		
Name (print) _____			<input type="checkbox"/> <b>Authorized Employee of previous operator</b> <input type="checkbox"/> <b>Authorized agent of previous operator</b> ( <i>see instruction G</i> )		
Title _____			Date _____ Phone with area code _____		
<b>16. CURRENT OPERATOR CERTIFICATION.</b> By signing this certificate as the Current Operator, I certify that all statements on this form are true and correct and I acknowledge responsibility for the regulatory compliance of the subject lease including plugging of well(s) pursuant to Rule 14. I further acknowledge that I assume responsibility for the physical operation, control, and proper plugging of each well designated in this filing. I also acknowledge that I will remain designated as the Current Operator until a new certificate designating a new Current Operator is approved by the Commission.					
FELIX ENERGY HOLDINGS II, LLC			Heather Dahlgren		
Name (print) Felix Admin Services			Signature <input checked="" type="checkbox"/> <b>Authorized Employee of current operator</b> <input type="checkbox"/> <b>Authorized agent of current operator</b> ( <i>see instruction G</i> )		
Title heatherd@felix-energy.com			Date 05/03/2018                      Phone with area code (720) 974-2069		
E-mail Address (optional)			Phone with area code		

**Railroad Commission of Texas**  
Oil And Gas Division  
Request for Clearance of Storage Tanks  
Prior to Potential Test

Form P-8

Reference No. 40488

1. Operator's Name and Address (Exactly as shown on Form P-5 Organization Report) FELIX ENERGY HOLDINGS II, LLC FELIX ENERGY 1530 16TH ST SUITE 500 DENVER, CO 80202-0000		3. RRC District No. 08
2. RRC Operator Number: <u>265322</u>		4. County of Well Site WINKLER
		5. API No. 42-495-33843
6. Field Name (Wildcat or exactly as shown on RRC records) PHANTOM (WOLFCAMP)	7. Drilling Permit No. 825440	8. Rule 37 Case No.
9. Lease Name UL URAD 1609-21	10. Oil lease No.	11. Well No. 1H
12. Drilling completed on <u>07/04/2017</u>	13. Completion report--Form W-2 or G-1--will be filed on <u>01/15/2018</u>	
14. Oil or condensate gatherer's name and address GENESIS CRUDE OIL, L.P. 919 MILAM SUITE 2100 HOUSTON, TX 77002  (713) 860-2500	15. Authorization to transport oil or condensate (mark one) <input checked="" type="checkbox"/> Form P-4 attached <input checked="" type="checkbox"/> Form P-4 Filed on <u>07/13/2017</u>	
16. This request is for <u>75000</u> barrels of <input checked="" type="checkbox"/> crude oil OR <input type="checkbox"/> condensate	17. Amount of oil/condensate in tanks  <u>1500</u> barrels on <u>11/21/2017</u>	
18. Storage capacity in bbls. Tank battery <u>2000</u> Test tanks <u>0</u> Total <u>2000</u>		
19. Previous request for clearance. Amount <u>75000</u> barrels granted on <u>07/14/2017</u>		
20. Reason for current request for clearance (explain briefly) Continue flow back and test		
Heather Dahlgren		ENG TECH
Name of operator's representative		Title of person
(720) 974-2069	11/21/2017	
Telephone	Date	
<b>RRC District Office Action</b>		
<b>Status:</b> Approved	<b>Barrels recommended</b> <u>75000</u>	<b>RRC Staff</b> <u>11/21/2017</u> Date

**Railroad Commission of Texas**  
Oil And Gas Division  
Request for Clearance of Storage Tanks  
Prior to Potential Test

Form P-8

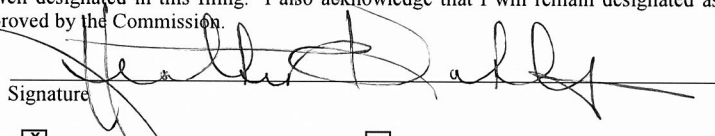
Reference No. 41004

1. Operator's Name and Address (Exactly as shown on Form P-5 Organization Report) FELIX ENERGY HOLDINGS II, LLC FELIX ENERGY 1530 16TH ST SUITE 500 DENVER, CO 80202-0000		3. RRC District No. 08
2. RRC Operator Number: <u>265322</u>		4. County of Well Site WINKLER
		5. API No. 42-495-33843
6. Field Name (Wildcat or exactly as shown on RRC records) PHANTOM (WOLFCAMP)	7. Drilling Permit No. 825440	8. Rule 37 Case No.
9. Lease Name UL URAD 1609-21	10. Oil lease No.	11. Well No. 1H
12. Drilling completed on <u>07/04/2017</u>	13. Completion report--Form W-2 or G-1--will be filed on <u>02/01/2018</u>	
14. Oil or condensate gatherer's name and address WESTERN REFINING COMPANY, L.P. 6501 TROWBRIDGE DR EL PASO, TX 79905  (915) 775-3339	15. Authorization to transport oil or condensate (mark one) <input checked="" type="checkbox"/> Form P-4 attached <input checked="" type="checkbox"/> Form P-4 Filed on <u>12/19/2017</u>	
16. This request is for <u>75000</u> barrels of <input checked="" type="checkbox"/> crude oil OR <input type="checkbox"/> condensate	17. Amount of oil/condensate in tanks  <u>1500</u> barrels on <u>12/19/2017</u>	
18. Storage capacity in bbls. Tank battery <u>2000</u> Test tanks <u>0</u> Total <u>2000</u>		
19. Previous request for clearance. Amount <u>75000</u> barrels granted on <u>11/21/2017</u>		
20. Reason for current request for clearance (explain briefly) P4 Change of Transporter from previous; Additional barrels requested		
Heather Dahlgren		ENG TECH
Name of operator's representative		Title of person
(720) 974-2069	12/19/2017	
Telephone	Date	
<b>RRC District Office Action</b>		
<b>Status:</b> Approved	<b>Barrels recommended</b> <u>75000</u>	<b>RRC Staff</b> <u>12/20/2017</u> Date

**CERTIFICATE OF COMPLIANCE  
AND TRANSPORTATION AUTHORITY**

**P-4**  
5/02—WWW-1

READ INSTRUCTIONS ON BACK

1. Field name exactly as shown on proration schedule <b>Phantom (Wolfcamp)</b>		2. Lease name as shown on proration schedule <b>UL Urad 1609-21</b>					
3. Current operator name exactly as shown on P-5 Organization Report <b>FELIX ENERGY HOLDINGS II, LLC</b>		4. Operator P-5 no. <b>265322</b>	5. Oil Lse/Gas ID no.	6. County <b>Winkler</b>	7. RRC district <b>08</b>		
8. Operator address including city, state, and zip code <b>1530 16TH ST. STE 500 DENVER, CO 80202</b>		9. Well no(s) (see instruction E) <b>1H</b>					
		10. Classification <input checked="" type="checkbox"/> Oil <input type="checkbox"/> Gas <input type="checkbox"/> Other (see instruction A)			11. Effective Date <b>01/01/18</b>		
12. Purpose of Filing. (Complete section a or b below.) (See instructions B and G) <b>a. Change of:</b> <input type="checkbox"/> operator <input checked="" type="checkbox"/> oil or condensate gatherer <input type="checkbox"/> gas gatherer <input type="checkbox"/> gas purchaser <input type="checkbox"/> gas purchaser system code <input type="checkbox"/> field name from: _____ <input type="checkbox"/> lease name from: _____ <b>OR</b> <b>b. New RRC Number for:</b> <input type="checkbox"/> oil lease <input type="checkbox"/> gas well <input type="checkbox"/> other well (specify) _____ <b>Due to:</b> <input type="checkbox"/> new completion or recompletion <input type="checkbox"/> reclass oil to gas <input type="checkbox"/> reclass gas to oil <input type="checkbox"/> consolidation, unitization, or subdivision (oil lease only)							
13. Authorized GAS WELL GAS or CASINGHEAD GAS Gatherer(s) and/or Purchaser(s). (See instruction G).							
Gatherer	Purchaser	Name of GAS WELL GAS or CASINGHEAD GAS Gatherer(s) or Purchaser(s) As Indicated in Columns to the Left (Attach an additional sheet in same format if more space is needed)			Purchaser's RRC Assigned System Code	Percent of Take	Full-well stream
x	x	Targa Delaware LLC (836022)			0001	100	
14. Authorized OIL or CONDENSATE Gatherer(s). (See instruction G).							
Name of OIL or CONDENSATE Gatherer(s) - List Highest Volume Gatherer First (Attach an additional sheet in same format if more space is needed)					Percent of Take	<b>RRC USE ONLY</b>	
Western Refining Company LP (912206)					100	Reviewer's initials: _____ Approval date: _____	
15. PREVIOUS OPERATOR CERTIFICATION FOR CHANGE OF OPERATOR P-4 FILING. Being the PREVIOUS OPERATOR, I certify that operating responsibility for the well(s) designated in this filing, located on the subject lease has been transferred in its entirety to the above named Current Operator. I understand, as Previous Operator, that designation of the above named operator as Current Operator is not effective until this certificate is approved by the Commission.							
Name of Previous Operator  Name (print)  Title				Signature  <input type="checkbox"/> Authorized Employee of previous operator <input type="checkbox"/> Authorized agent of previous operator (see instruction G)  Date _____ Phone with area code _____			
16. CURRENT OPERATOR CERTIFICATION. By signing this certificate as the Current Operator, I certify that all statements on this form are true and correct and I acknowledge responsibility for the regulatory compliance of the subject lease including plugging of well(s) pursuant to Rule 14. I further acknowledge that I assume responsibility for the physical operation, control, and proper plugging of each well designated in this filing. I also acknowledge that I will remain designated as the Current Operator until a new certificate designating a new Current Operator is approved by the Commission.							
HEATHER DAHLGREN Name (print)  ENG TECH Title  heatherd@felix-energy.com E-mail Address (optional)				Signature  <input checked="" type="checkbox"/> Authorized Employee of current operator <input type="checkbox"/> Authorized agent of current operator (see instruction G)  12/19/17 Date _____ (720) 970-2069 Phone with area code _____			



# CERTIFICATE OF POOLING AUTHORITY

Revised 05/2001

# P-12

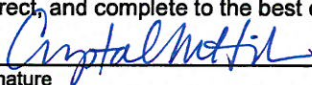
1. Field Name(s) <b>Phantom (Wolfamp)</b>	2. Lease/ID Number (if assigned)	3. RRC District Number <b>08</b>
4. Operator Name <b>Felix Energy Holdings II, LLC</b>	5. Operator P-5 Number <b>265322</b>	6. Well Number <b>1H</b>
7. Pooled Unit Name <b>UL Urad 1609-21</b>	8. API Number <b>42-495-33843</b>	9. Purpose of Filing <input type="checkbox"/> Drilling Permit (W-1) <input checked="" type="checkbox"/> Completion Report
10. County <b>Winkler</b>	11. Total acres in pooled unit <b>641.11</b>	

## DESCRIPTION OF INDIVIDUAL TRACTS CONTAINED WITHIN THE POOLED UNIT

TRACT/PLAT IDENTIFIER	TRACT NAME	ACRES IN TRACT (See inst. #7 below)	INDICATE UNDIVIDED INTERESTS	
			UNLEASED	NON-POOLED
1	UL Lease 111473	320.61	<input type="checkbox"/>	<input type="checkbox"/>
2	UL Lease 111477	320.5	<input type="checkbox"/>	<input type="checkbox"/>
			<input type="checkbox"/>	<input type="checkbox"/>
			<input type="checkbox"/>	<input type="checkbox"/>
			<input type="checkbox"/>	<input type="checkbox"/>
			<input type="checkbox"/>	<input type="checkbox"/>
			<input type="checkbox"/>	<input type="checkbox"/>
			<input type="checkbox"/>	<input type="checkbox"/>
			<input type="checkbox"/>	<input type="checkbox"/>
			<input type="checkbox"/>	<input type="checkbox"/>

### CERTIFICATION:

I declare under penalties prescribed pursuant to the Sec. 91.143, Texas Natural Resources Code, that I am authorized to make the foregoing statements and that the information provided by me or under my direction on this Certificate of Pooling Authority is true, correct, and complete to the best of my knowledge.



Signature

Crystal M Hink

Print Name

Land Admin Manager

crystalh@felix-energy.com

Title

E-mail (if available)

Date

2/16/18

(720) 974-2076

Phone

### INSTRUCTIONS — Reference: Statewide Rules 31, 38 and 40

- When two or more tracts are pooled to form a unit to obtain a drilling permit, file completion paperwork, or reform a pooled unit pursuant to Rule 38(d)(3) the operator must file an original Certificate of Pooling Authority and certified plat.
- The certified plat shall designate each tract with an outline and a tract identifier. The tract identifier on the plat shall correspond to the tract identifier and associated information listed on the Certificate.
- If within an individual tract, a non-pooled and/or unleased interest exists, indicate by checking the appropriate box.
- If the Purpose of Filing is to obtain a drilling permit, in box #1 list all applicable fields separately or enter "All Fields" if the Certificate pertains to all fields requested on Form W-1.
- If the Purpose of Filing is to file completion paperwork, enter the applicable field name in box #1 for the completion.
- Identify the drill site tract with an \* to the left of the tract identifier.
- The total number of acres in the pooled unit in #11 should equal the total of all acres in the individual tracts listed.

Clear Form

## RAILROAD COMMISSION OF TEXAS

**1701 N. Congress  
P.O. Box 12967  
Austin, Texas 78701-2967**

Form P-16

Page 1

Rev. 01/2016

## Acreage Designation

## SECTION I. OPERATOR INFORMATION

**Operator Name:** Felix Energy Holdings II, LLC

Operator P-5 No.: 265322

**Operator Address:** 1530 16th Street, Suite 500, Denver, CO 80202

## SECTION II. WELL INFORMATION

**District No.: 08**

**County:** Winkler

Well No.: 1H

**API No.: 42-495-33843**

**Total Lease Acres: 641.11**

**Drilling Permit No.: 825440**

**Lease Name:** UL Urad 1609-21

Lease No.:

**Field Name:** Phantom (Wolfcamp)

Field No.: 71052900

**Purpose of Filing:**☐ **Drilling Permit Application  
(Form W-1)****Completion Report**  
(Form G-1/W-2)

Filer is the owner or lessee, or has been authorized by the owner or lessee, of all or an undivided portion of the mineral estate under each tract for which filer is listed as operator below. For all leases operated by other entities, the number of assigned acres shown are reflected on current Commission records or the filer has been authorized by the current operator to change the assigned acreage of that operator as shown below.

**SECTION III. LISTING OF ALL WELLS IN THE APPLIED-FOR FIELD ON THE SAME ACREAGE AS THE LEASE, POOLED UNIT, OR UNITIZED TRACT DESIGNATED IN SECTION II ABOVE BY FILER**

[illegible]

Total Well Count >	1	641.11	< A. Total Assigned Horiz. Acreage	641.11	< C. Total Assigned Acreage
		0	< Total Remaining Horiz. Acreage	0	< Total Remaining Acreage
		0	< B. Total Assigned Vert./Dir. Acreage		
		0	< Total Remaining Vert./Dir. Acreage		

## SECTION IV. REMARKS / PURPOSE OF FILING (see instructions)

**Attach Additional Pages As Needed.** ☒ No additional pages ☐ Additional Pages: \_\_\_\_\_ (No. of additional pages)

**CERTIFICATION:** I declare under penalties prescribed in Sec. 91.143, Texas Natural Resources Code, that this report was prepared by me or under my supervision or direction, that I am authorized to make this report, and that the information contained in this report is true, correct, and complete to the best of my knowledge.

*Cynthia Mettill*  
Signature

**Crystal M Hink - Land Admin Manager**  
**Name and title (type or print)**

**crystalh@felix-energy.com**

Email (include email address *only* if you affirmatively consent to its public release)

1530 16th Street, Suite 500  
Address

Denver	CO	80202
City,	State,	Zip Code

720	974-2076
<b>Tel: Area Code</b>	<b>Number</b>

2/16/18  
Date: mo. day yr.



## GROUNDWATER PROTECTION DETERMINATION

Form GW-2



## Groundwater Advisory Unit

**Date Issued:** 13 April 2017**GAU Number:** 170425**Attention:** FELIX ENERGY HOLDINGS II,  
FELIX ENERGY  
DENVER, CO 80202**Operator No.:** 265322**API Number:**  
**County:** WINKLER  
**Lease Name:** UL Rad 1609-21  
**Lease Number:**  
**Well Number:** 1H  
**Total Vertical Depth:** 14000  
**Latitude:** 31.730747  
**Longitude:** -103.237559  
**Datum:** NAD27**Purpose:** New Drill**Location:** Survey-UL; Block-21; Section-16

To protect usable-quality groundwater at this location, the Groundwater Advisory Unit of the Railroad Commission of Texas recommends:

The interval from the land surface to the base of the Allurossa, which is estimated to occur at a depth between 900 and 950 feet, must be protected.

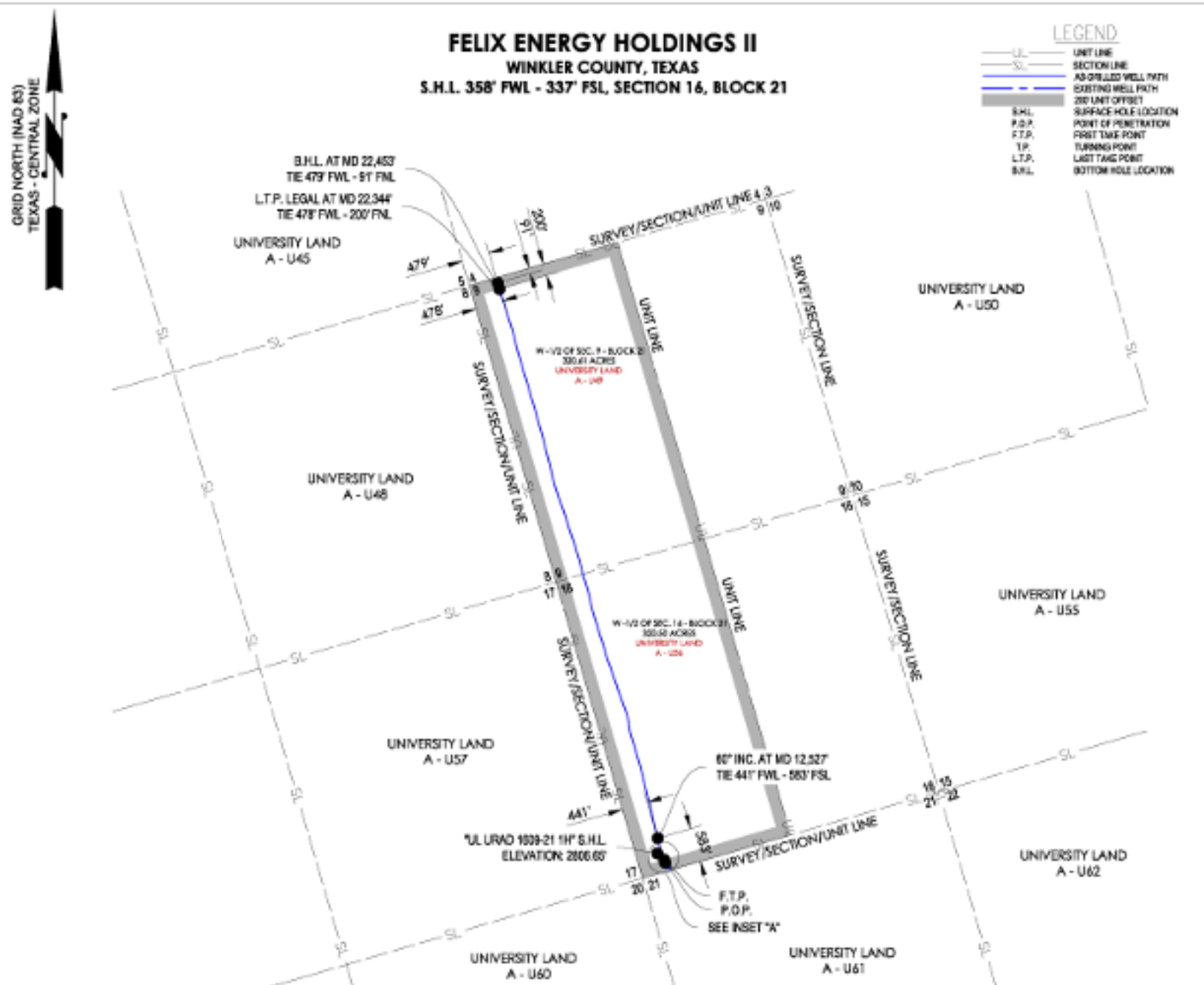
This recommendation is applicable to all wells within a radius of 2000 feet of this location.

Note: Unless stated otherwise, this recommendation is intended to apply only to the subject well and not for area-wide use. This recommendation is for normal drilling, production, and plugging operations only. It does not apply to saltwater disposal operation into a nonproductive zone (RRC Form W-14).

This determination is based on information provided when the application was submitted on 04/12/2017. If the location information has changed, you must contact the Groundwater Advisory Unit, and submit a new application if necessary. If you have questions, please contact us at 512-463-2741 or gau@rrc.texas.gov.

Groundwater Advisory Unit, Oil and Gas Division

Form GW-2 P.O. Box 12967 Austin, Texas 78771-2967 512-463-2741 Internet address: www.rrc.texas.gov  
Rev. 02/2014



OPERATOR: FELIX ENERGY, LLC

WELL NAME: UL URAD 1609-21

WELL NO: 1H

TOPOGRAPHIC & VEGETATION: FLAT LOCATION WITH LOW LYING BRUSH

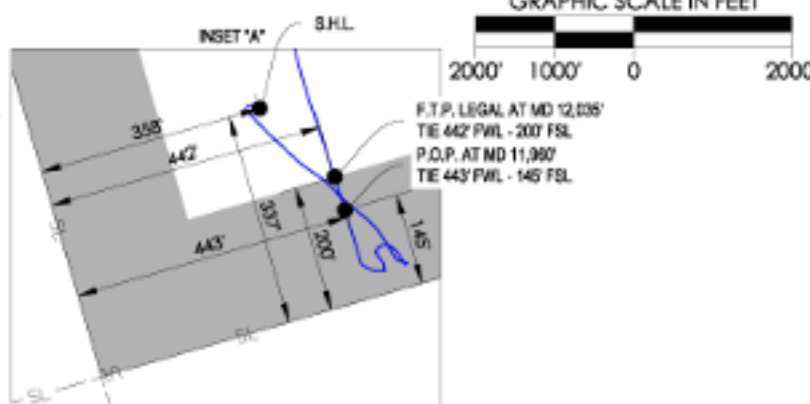
GOOD DRILL SITE: YES

REFERENCE STAKES OR ALTERNATE LOCATION  
STAKES SET: NONE

BEST ACCESSIBILITY TO LOCATION: FROM SOUTH

#### DISTANCE & DIRECTION

FROM HWY JCT OR TOWN: ±4.61 MILES WEST OF WINK, TX  
FROM THE INTERSECTION OF FARM TO MARKET 1232 AND HENDRICKS BLVD. IN WINK TEXAS  
HEAD WEST ON FARM TO MARKET 1232 FOR ±1.5 MILES, TURN LEFT ONTO COUNTY ROAD 201  
FOR ABOUT ±3.3 MILES, TURN LEFT ON EXISTING LEASE ROAD FOLLOW THAT FOR ABOUT ±0.4  
MILES, TURN RIGHT ON EXISTING LEASE ROAD ±1.5 MILES, TURN LEFT ON EXISTING LEASE  
ROAD AND FOLLOW FOR ±0.32 MILES THAT THE PAD WILL BE ON THE RIGHT.



#### SURFACE HOLE LOCATION:

358' FWL & 337' FSL (SEC. 16)  
GROUND ELEVATION: 2806.65'  
NAD 27 TEXAS CENTRAL ZONE  
NORTHING: 762484.56, EASTING: 1097139.29  
LATITUDE: N 31.73074620°, LONGITUDE: W 103.2375578°  
NAD 83 TEXAS CENTRAL ZONE  
NORTHING: 1060060.99, EASTING: 197274.56  
LATITUDE: N 31.73087518°, LONGITUDE: W 103.23800444°

#### POINT OF PENETRATION:

443' FWL & 145' FSL (SEC. 16)  
NAD 27 TEXAS CENTRAL ZONE  
NORTHING: 762232.94, EASTING: 1097274.56  
LATITUDE: N 31.73031444°, LONGITUDE: W 103.23710946°

#### FIRST TAKE POINT:

442' FWL & 200' FSL (SEC. 14)  
NAD 27 TEXAS CENTRAL ZONE  
NORTHING: 762376.45, EASTING: 1097258.08  
LATITUDE: N 31.73045758°, LONGITUDE: W 103.2371668°

#### LAST TAKE POINT:

478' FWL & 200' FNL (SEC. 9)  
NAD 27 TEXAS CENTRAL ZONE  
NORTHING: 772151.95, EASTING: 1094440.47  
LATITUDE: N 31.75711922°, LONGITUDE: W 103.24704952°

#### BOTTOM HOLE LOCATION:

479' FWL & 91' FNL (SEC. 9)  
NAD 27 TEXAS CENTRAL ZONE  
NORTHING: 772257.23, EASTING: 1094410.88  
LATITUDE: N 31.75740639°, LONGITUDE: W 103.24715356°

#### UNIT CORNERS

LOCATION	STATE PLANE TEXAS CENTRAL (5000)	NAD27	GEODINAMIC (400)
NE CORNER OF WEST -1/2 OF BLK.21-SEC.9	N = 772950.90 E = 1086406.85	LAT: 31.75940816° LONG: -103.24081982°	
SE CORNER OF WEST -1/2 OF BLK.21-SEC.9	N = 767879.08 E = 1087943.50	LAT: 31.74862634° LONG: -103.23942449°	
SE CORNER OF WEST -1/2 OF BLK.21-SEC.16	N = 762801.84 E = 1086424.70	LAT: 31.73178134° LONG: -103.23313600°	
SW CORNER BLK.21-SEC.16	N = 762840.48 E = 1086406.85	LAT: 31.72159385° LONG: -103.23812345°	
SW CORNER BLK.21-SEC.9	N = 767134.81 E = 1086406.85	LAT: 31.74140370° LONG: -103.24351371°	
NW CORNER BLK.21-SEC.9	N = 772259.72 E = 1089325.39	LAT: 31.75724084° LONG: -103.24071093°	



#### CONTACT INFORMATION:

Shannon D. Ozment  
Crafton Tull (818) 9315  
1000 Ludgloven Dr.  
Conway, AR 72034

GENERAL NOTES:  
1. THE LOCATIONS OF UNDERGROUND UTILITIES AS SHOWN HEREON ARE BASED ON  
REASONABLE VISUAL OBSERVATION LOCATIONS OF UNDERGROUND UTILITIES STRUCTURES MAY  
VARY FROM LOCATIONS SHOWN HEREIN. ADDITIONAL BURIED UTILITIES STRUCTURES MAY BE  
ENCOUNTERED. NO EXCAVATIONS WERE MADE DURING THE PROGRESS OF THIS SURVEY TO LOCATE  
BURIED UTILITIES STRUCTURES. BEFORE EXCAVATIONS ARE BEGUN, THE OFFICES OF THE VARIOUS  
UTILITIES SERVING THIS AREA SHOULD BE CONTACTED FOR THEIR UTILITY LOCATION.  
2. BASIS OF BEARINGS: TEXAS STATE PLANE GRID, CENTRAL ZONE, NAD83 AS DETERMINED BY  
GPS OBSERVATION.  
3. COMBINED SCALE FACTOR AT S.H.L. - 0.99983807  
4. VERTICAL DATUM IS NAVD 83  
5. AREAS, DISTANCES, AND COORDINATES ARE "GROSS" BASED ON U.S. SURVEY FEET.  
6. THIS PLAT DOES NOT REPRESENT A BOUNDARY SURVEY.



1000 Ludgloven Dr  
Conway, Arkansas 72034  
501.328.3314 | 501.328.3351  
www.craftontull.com

REVISION	
76	PRELIMINARY AS-DRILLED PLAT
129	FINAL AS-DRILLED PLAT

#### "UL URAD 1609-21 1H"

WEST -1/2 OF SECTION 16, BLOCK 21 - 320.50 ACRES  
WEST -1/2 OF SECTION 9, BLOCK 21 - 320.61 ACRES  
WINKLER COUNTY, TEXAS  
FINAL AS-DRILLED PLAT

SCALE: 1" = 2000'  
PLOT DATE: 01-29-2018

CHECKED BY:  
DRAWN BY:

J.PARKER

APPROVED BY:

JWB

SHEET NO.: 1 OF 1

A.ILEY