



3335 Pollok Drive
Conroe, Texas 77303

936.442.2500 (Office)
936.442.2599 (Fax)
www.msenergyservices.com

August 16, 2017

The Railroad Commission of Texas
Oil and Gas Division
PO Drawer 12967
Capital Station
Austin, Texas 78711-2967

Attn: Pam Johns

RE: Fleur De Lis Energy
University 9-31 10H (Permit No. 827806)
Survey: University Lands / Abstract: Not Available
Field: Lin (Wolfcamp)
Reagan County, TX
API number: 42-383-39908

Dear Pam Johns:

Please find enclosed the original and one copy of the survey performed on the above referenced well by MS Energy Services; RRC Operator No. 592474. Other information required by your office is as follows:

Name of surveyor	Drainhole number	Surveyed depths	Date performed	Type of Survey
Eric Zirngible	Original	Surface - 781'	8/5/2017 - 8/5/2017	Rate Gyro

A certified plat, on which the bottom hole location is oriented, both to the surface location and to the lease lines (or unit lines in case of pooling), is attached to the survey report. If any other information is required, please contact the undersigned at the letterhead address and phone number.

Sincerely,

Ryan Moran
MS Survey

PERMIT TO DRILL, DEEPEN, PLUG BACK, OR RE-ENTER ON A REGULAR OR ADMINISTRATIVE EXCEPTION LOCATION

Page 3 of 5



Job Number: SVM0-170542
 Company: Fleur De Lis Energy LLC.
 Lease/Well: University 9-31 10H
 Location: Reagan County, TX
 Rig Name: Trinidad 101
 RKB: 25'
 G.L. or M.S.L.: GL

State/Country: Texas/USA
 Declination: Declination See Details Below
 Grid: East To Grid North
 File name: C:\WINSER~1\2017\FLEURD~1\MO\UNIVER~1\93110H.SVY
 Date/Time: 07-Aug-17 / 16:06
 Curve Name: Surface - 781' M.D. (Rate Gyro)
 Lat: 31.227931 Long: -101.570858

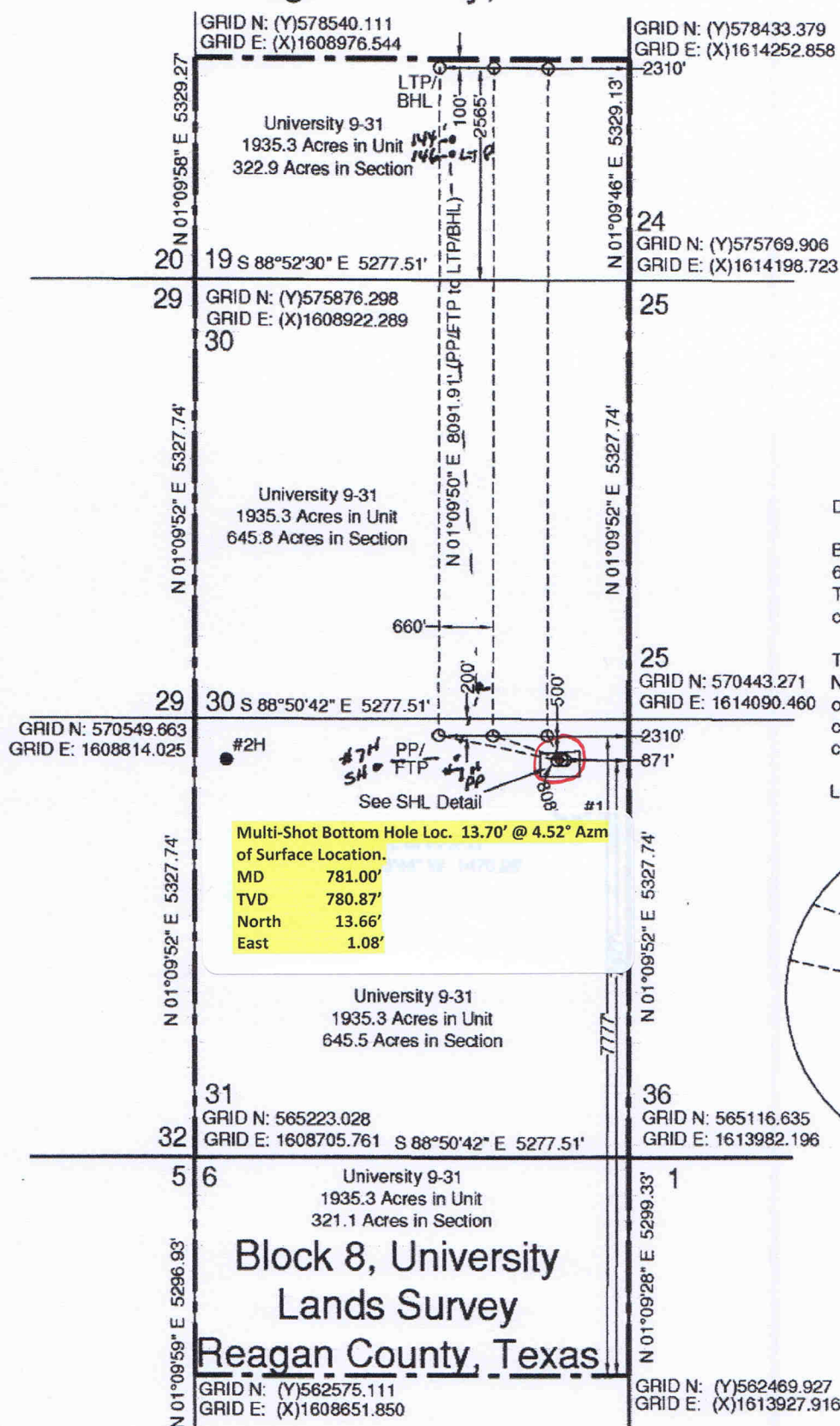
MS Energy

Declination To True North: 6.009°
 Grid Convergence Factor: -0° 38' 14.633"
 Total Correction Mag to Grid: 6.54°

WINSERVE SURVEY CALCULATIONS
 Minimum Curvature Method
 Vertical Section Plane 351.43
 Vertical Section Referenced to Wellhead
 Rectangular Coordinates Referenced to Wellhead

Measured Depth FT	Incl Angle Deg	Drift Direction Deg	True Vertical Depth	N-S FT	E-W FT	Vertical Section FT	C L O S U R E		Dogleg Severity Deg/100
							Distance FT	Direction Deg	
.00	.00	.00	.00	.00	.00	.00	.00	.00	.00
100.00	.58	14.61	100.00	.49	.13	.47	.51	14.61	.58
200.00	.97	14.16	199.99	1.80	.46	1.71	1.86	14.41	.39
300.00	1.07	2.25	299.97	3.55	.71	3.41	3.62	11.24	.23
400.00	1.23	2.49	399.95	5.56	.79	5.38	5.62	8.08	.16
500.00	1.21	4.20	499.93	7.68	.91	7.46	7.74	6.78	.04
600.00	1.16	4.36	599.91	9.75	1.07	9.48	9.81	6.25	.05
700.00	1.32	3.46	699.89	11.91	1.21	11.59	11.97	5.82	.16
Last Survey Depth Recorded									
781.00	1.19	346.87	780.87	13.66	1.08	13.34	13.70	4.52	.47

Block 9, University Lands Survey Reagan County, Texas



Last Take Point/
Bottom Hole Location (LTP/BHL)
GRID N: (Y)578380.119
GRID E: (X)1611941.233
NAD'83 Lat/Long
Lat: 31°15'04.289" N
Long: 101°34'32.213" W

Penetration Point (PP)/ First Take
Point (FTP)
GRID N: (Y)570289.881
GRID E: (X)1611776.865
NAD'83 Lat/Long
Lat: +31°13'44.200"
Long: -101°34'33.066"

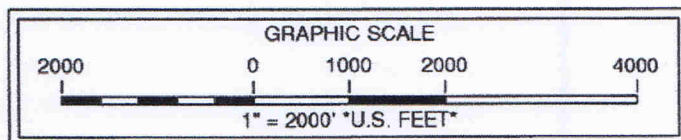
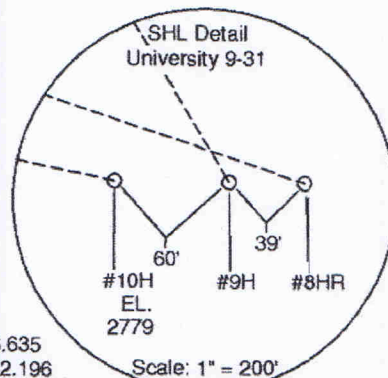
Surface Hole Location (SHL)
GRID N: (Y)569960.647
GRID E: (X)1613209.852
NAD'83 Lat/Long
Lat: +31°13'41.100"
Long: -101°34'16.519"

Driving Directions:

Beginning at the intersection of US Highway
67 & ST Highway 137 in Big Lake, Texas,
Travel West for 6.7 Miles to a lease road at
coordinates 31°12'54.99" N, 101°34'39.02" N.

Turn Right (North) on lease road and travel
North for 1/2 of a mile to the first intersection
of a lease road to the right. Turn right (East) &
continue for a total distance of 1 mile to
coordinates 31°13'34.61" N, 101°34'16.75" W.

Location is 659.5 feet to the left (North).



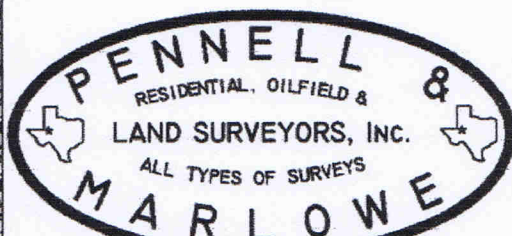
Note: Well is located 7.0 miles Northwest of the city of Big Lake, Texas.

Note: Survey Reconstruction filed in the Office of Pennell & Marlowe Land Surveyors, Inc.

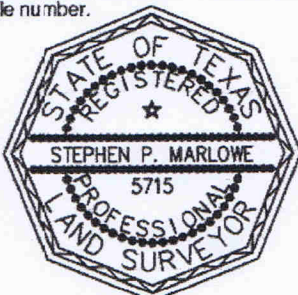
Note: Coordinates shown herein are on The Texas Coordinate System of 1927, Central Zone.

Note: Bearings and distances are based on The Texas Coordinate System of 1927, Central Zone.

Note: Example: (S-99999) indicates General Land Office file number.



Stephen P. Marlowe
REGISTERED PROFESSIONAL LAND SURVEYOR NO. 5715



March 23, 2017

170323JR-BLS

Revised: 06/12/17 BLS
USGS Quadrangle Sheet: Best, Tex.

Railroad Commission Permit Plat

FDL OPERATING, LLC.

University 9-31 #10H

500' FROM NORTH LINE

871' FROM EAST LINE

University 9-31 Unit

1935.3 Acres (Called) in Unit

Sections 19, 30 & 31, Block 9, &

Section 6, Block 8

University Lands Survey

Reagan County, Texas

Scale: 1" = 2000'

Surveyor Certification Form

Survey company: **MS Energy Services**

Surveyors name: **Eric Zirngible**

Survey job type: **Rate Gyro**

Customer: **Fleur De Lis Energy**

Well: **University 9-31 10H**

API: **42-383-39908**

Surveyed from: **Surface to a depth of 781' MD**

Survey run date: **8/5/2017 to 8/5/2017**

Surface location: **Reagan County, TX**

I certify that the data is true, correct, complete and within the limitations of the tool set forth by MS Energy Services; that I am authorized and qualified to make this report; and that I have reviewed this report and find that it conforms to the principles and procedures as set forth by MS Energy Services.

**Eric
Zirngible**

Digitally signed by Eric Zirngible

DN: cn=Eric Zirngible, o=MS

Energy Services, ou=MS Survey,

email=EZirngible@msenergyser
vices.com, c=US

Date: 2017.08.16 16:39:08
-05'00'



Fleur De Lis Energy, LLC

**Reagan County, Tx (NAD 27) USE
Sec 19-30&31, Blk 9 & Sec 6, Blk 8
University 9-31 #10H**

Wellbore #1

Survey: Survey #2

Survey Report - Geographic

25 September, 2017



Company:	Fleur De Lis Energy, LLC	Local Co-ordinate Reference:	Well University 9-31 #10H
Project:	Reagan County, Tx (NAD 27) USE	TVD Reference:	KB=25 @ 2804.0usft
Site:	Sec 19-30&31, Blk 9 & Sec 6, Blk 8	MD Reference:	KB=25 @ 2804.0usft
Well:	University 9-31 #10H	North Reference:	Grid
Wellbore:	Wellbore #1	Survey Calculation Method:	Minimum Curvature
Design:	Wellbore #1	Database:	EDM 5000.1 Multi User Db

Project	Reagan County, Tx (NAD 27) USE		
Map System:	US State Plane 1927 (Exact solution)	System Datum:	Mean Sea Level
Geo Datum:	NAD 1927 (NADCON CONUS)		
Map Zone:	Texas Central 4203		

Site	Sec 19-30&31, Blk 9 & Sec 6, Blk 8		
Site Position:		Northing:	569,958.55 usft
From:	Map	Easting:	1,613,269.81 usft
Position Uncertainty:	0.0 usft	Slot Radius:	13-3/16 "
		Latitude:	31° 13' 40.536 N
		Longitude:	101° 34' 14.399 W
		Grid Convergence:	-0.64 °

Well	University 9-31 #10H		
Well Position	+N/-S	0.0 usft	Northing:
	+E/-W	0.0 usft	Easting:
Position Uncertainty	0.0 usft	Wellhead Elevation:	0.0 usft
		Latitude:	31° 13' 40.551 N
		Longitude:	101° 34' 15.090 W
		Ground Level:	2,779.0 usft

Wellbore	Wellbore #1				
Magnetics	Model Name	Sample Date	Declination (°)	Dip Angle (°)	Field Strength (nT)
	HDGM	7/17/2017	5.90	59.58	47,685

Design	Wellbore #1				
Audit Notes:					
Version:	1.0	Phase:	ACTUAL	Tie On Depth:	0.0
Vertical Section:	Depth From (TVD) (usft)	+N/-S (usft)	+E/-W (usft)	Direction (°)	
	0.0	0.0	0.0	351.43	

Survey Program	Date	9/25/2017			
From (usft)	To (usft)	Survey (Wellbore)	Tool Name	Description	
100.0	781.0	Gyro (Wellbore #1)	NS-GYRO-MS	North sensing gyrocompassing m/s	
862.0	15,890.0	Survey #2 (Wellbore #1)	MWD	MWD - Standard	

Survey									
Measured Depth (usft)	Inclination (°)	Azimuth (°)	Vertical Depth (usft)	+N/-S (usft)	+E/-W (usft)	Map Northing (usft)	Map Easting (usft)	Latitude	Longitude
781.0	1.19	346.87	780.9	13.7	1.1	569,974.31	1,613,210.93	31° 13' 40.686 N	101° 34' 15.080 W
Tie-On Survey 781 MD/780.9 TVD - PP/FTP University 9-31 #10H									
862.0	1.30	355.80	861.8	15.4	0.8	569,976.04	1,613,210.67	31° 13' 40.703 N	101° 34' 15.083 W
955.0	1.80	335.80	954.8	17.8	0.1	569,978.43	1,613,209.99	31° 13' 40.727 N	101° 34' 15.091 W
1,047.0	3.90	288.30	1,046.7	20.1	-3.4	569,980.73	1,613,206.43	31° 13' 40.749 N	101° 34' 15.132 W
1,138.0	7.70	284.60	1,137.2	22.6	-12.3	569,983.24	1,613,197.59	31° 13' 40.773 N	101° 34' 15.234 W
1,229.0	11.20	283.60	1,227.0	26.2	-26.8	569,986.85	1,613,183.09	31° 13' 40.807 N	101° 34' 15.402 W
1,319.0	13.00	282.00	1,315.0	30.4	-45.2	569,991.01	1,613,164.70	31° 13' 40.846 N	101° 34' 15.614 W
1,411.0	14.50	281.50	1,404.3	34.8	-66.6	569,995.46	1,613,143.29	31° 13' 40.888 N	101° 34' 15.861 W
1,500.0	16.40	281.50	1,490.1	39.5	-89.8	570,000.19	1,613,120.05	31° 13' 40.932 N	101° 34' 16.129 W
1,591.0	17.10	282.40	1,577.3	45.0	-115.4	570,005.62	1,613,094.40	31° 13' 40.983 N	101° 34' 16.426 W

Company:	Fleur De Lis Energy, LLC	Local Co-ordinate Reference:	Well University 9-31 #10H
Project:	Reagan County, Tx (NAD 27) USE	TVD Reference:	KB=25 @ 2804.0usft
Site:	Sec 19-30&31, Blk 9 & Sec 6, Blk 8	MD Reference:	KB=25 @ 2804.0usft
Well:	University 9-31 #10H	North Reference:	Grid
Wellbore:	Wellbore #1	Survey Calculation Method:	Minimum Curvature
Design:	Wellbore #1	Database:	EDM 5000.1 Multi User Db

Survey									
Measured Depth (usft)	Inclination (°)	Azimuth (°)	Vertical Depth (usft)	+N/-S (usft)	+E/-W (usft)	Map Northing (usft)	Map Easting (usft)	Latitude	Longitude
1,681.0	15.80	281.80	1,663.6	50.3	-140.4	570,010.97	1,613,069.48	31° 13' 41.033 N	101° 34' 16.713 W
1,771.0	14.90	283.00	1,750.4	55.4	-163.6	570,016.08	1,613,046.21	31° 13' 41.081 N	101° 34' 16.982 W
1,862.0	14.10	281.90	1,838.5	60.3	-185.9	570,020.99	1,613,023.97	31° 13' 41.127 N	101° 34' 17.239 W
1,951.0	14.80	281.50	1,924.6	64.8	-207.6	570,025.50	1,613,002.22	31° 13' 41.170 N	101° 34' 17.490 W
2,043.0	13.60	281.70	2,013.8	69.4	-229.7	570,030.03	1,612,980.11	31° 13' 41.212 N	101° 34' 17.745 W
2,133.0	14.10	282.40	2,101.2	73.9	-250.8	570,034.53	1,612,959.04	31° 13' 41.254 N	101° 34' 17.988 W
2,224.0	15.70	283.20	2,189.1	79.1	-273.6	570,039.72	1,612,936.23	31° 13' 41.303 N	101° 34' 18.252 W
2,314.0	15.30	284.10	2,275.9	84.7	-297.0	570,045.40	1,612,912.86	31° 13' 41.357 N	101° 34' 18.522 W
2,403.0	14.30	282.30	2,361.9	90.0	-319.1	570,050.60	1,612,890.73	31° 13' 41.406 N	101° 34' 18.777 W
2,493.0	14.90	282.30	2,449.0	94.8	-341.3	570,055.43	1,612,868.56	31° 13' 41.451 N	101° 34' 19.033 W
2,584.0	15.70	283.80	2,536.8	100.2	-364.7	570,060.86	1,612,845.17	31° 13' 41.502 N	101° 34' 19.303 W
2,676.0	14.40	286.10	2,625.6	106.4	-387.8	570,067.00	1,612,822.09	31° 13' 41.560 N	101° 34' 19.570 W
2,765.0	14.10	284.70	2,711.9	112.2	-408.9	570,072.82	1,612,800.98	31° 13' 41.616 N	101° 34' 19.814 W
2,855.0	14.20	283.50	2,799.2	117.5	-430.2	570,078.18	1,612,779.64	31° 13' 41.666 N	101° 34' 20.060 W
2,947.0	12.80	281.70	2,888.6	122.2	-451.2	570,082.88	1,612,758.68	31° 13' 41.711 N	101° 34' 20.302 W
3,037.0	12.80	281.50	2,976.4	126.2	-470.7	570,086.89	1,612,739.15	31° 13' 41.748 N	101° 34' 20.528 W
3,126.0	13.90	283.20	3,063.0	130.7	-490.8	570,091.30	1,612,719.08	31° 13' 41.790 N	101° 34' 20.759 W
3,216.0	15.20	283.90	3,150.1	136.0	-512.7	570,096.60	1,612,697.10	31° 13' 41.840 N	101° 34' 21.013 W
3,308.0	14.90	282.60	3,238.9	141.4	-536.0	570,102.08	1,612,673.85	31° 13' 41.891 N	101° 34' 21.282 W
3,398.0	15.20	280.60	3,325.8	146.1	-558.9	570,106.78	1,612,650.96	31° 13' 41.935 N	101° 34' 21.546 W
3,489.0	15.30	283.60	3,413.6	151.1	-582.3	570,111.79	1,612,627.57	31° 13' 41.982 N	101° 34' 21.816 W
3,578.0	14.60	285.30	3,499.6	156.9	-604.5	570,117.52	1,612,605.33	31° 13' 42.037 N	101° 34' 22.073 W
3,669.0	15.60	285.20	3,587.5	163.1	-627.4	570,123.75	1,612,582.46	31° 13' 42.096 N	101° 34' 22.337 W
3,759.0	17.10	285.80	3,673.8	169.9	-651.8	570,130.53	1,612,558.05	31° 13' 42.160 N	101° 34' 22.619 W
3,849.0	15.70	284.50	3,760.2	176.5	-676.3	570,137.18	1,612,533.53	31° 13' 42.223 N	101° 34' 22.902 W
3,941.0	16.00	285.20	3,848.7	183.0	-700.6	570,143.62	1,612,509.24	31° 13' 42.284 N	101° 34' 23.183 W
4,031.0	16.00	284.50	3,935.2	189.3	-724.6	570,149.98	1,612,485.26	31° 13' 42.345 N	101° 34' 23.460 W
4,121.0	14.90	283.20	4,021.9	195.1	-747.9	570,155.73	1,612,461.99	31° 13' 42.399 N	101° 34' 23.728 W
4,213.0	14.50	282.60	4,110.9	200.3	-770.6	570,160.94	1,612,439.23	31° 13' 42.448 N	101° 34' 23.991 W
4,303.0	14.40	281.40	4,198.1	205.0	-792.6	570,165.61	1,612,417.27	31° 13' 42.492 N	101° 34' 24.245 W
4,393.0	15.00	280.90	4,285.1	209.4	-815.0	570,170.02	1,612,394.86	31° 13' 42.533 N	101° 34' 24.503 W
4,485.0	15.50	281.40	4,373.9	214.1	-838.7	570,174.70	1,612,371.12	31° 13' 42.577 N	101° 34' 24.777 W
4,575.0	14.60	280.70	4,460.8	218.5	-861.7	570,179.19	1,612,348.18	31° 13' 42.619 N	101° 34' 25.042 W
4,666.0	13.80	280.40	4,549.0	222.6	-883.6	570,183.28	1,612,326.24	31° 13' 42.657 N	101° 34' 25.295 W
4,758.0	14.10	280.70	4,638.3	226.7	-905.4	570,187.34	1,612,304.44	31° 13' 42.694 N	101° 34' 25.547 W
4,847.0	14.40	280.70	4,724.6	230.8	-926.9	570,191.41	1,612,282.91	31° 13' 42.732 N	101° 34' 25.796 W
4,939.0	14.50	280.10	4,813.7	234.9	-949.5	570,195.55	1,612,260.33	31° 13' 42.771 N	101° 34' 26.056 W
5,031.0	14.70	279.90	4,902.7	238.9	-972.4	570,199.58	1,612,237.49	31° 13' 42.808 N	101° 34' 26.320 W
5,122.0	14.70	280.50	4,990.7	243.0	-995.1	570,203.66	1,612,214.76	31° 13' 42.846 N	101° 34' 26.582 W
5,214.0	14.00	279.40	5,079.8	247.0	-1,017.5	570,207.61	1,612,192.31	31° 13' 42.883 N	101° 34' 26.841 W
5,305.0	14.50	281.70	5,168.0	251.1	-1,039.6	570,211.72	1,612,170.29	31° 13' 42.921 N	101° 34' 27.095 W
5,396.0	13.10	282.10	5,256.4	255.5	-1,060.8	570,216.19	1,612,149.05	31° 13' 42.963 N	101° 34' 27.340 W
5,486.0	13.40	284.00	5,344.0	260.2	-1,080.9	570,220.85	1,612,128.96	31° 13' 43.007 N	101° 34' 27.572 W
5,577.0	14.50	286.20	5,432.3	265.9	-1,102.1	570,226.58	1,612,107.79	31° 13' 43.061 N	101° 34' 27.817 W
5,668.0	14.80	286.00	5,520.4	272.3	-1,124.2	570,232.96	1,612,085.68	31° 13' 43.122 N	101° 34' 28.072 W
5,757.0	14.90	286.40	5,606.4	278.7	-1,146.1	570,239.33	1,612,063.77	31° 13' 43.182 N	101° 34' 28.326 W
5,848.0	14.20	287.60	5,694.5	285.4	-1,167.9	570,246.00	1,612,041.91	31° 13' 43.246 N	101° 34' 28.578 W
5,939.0	14.50	287.40	5,782.6	292.1	-1,189.4	570,252.79	1,612,020.40	31° 13' 43.311 N	101° 34' 28.827 W
6,030.0	14.90	286.30	5,870.7	298.8	-1,211.5	570,259.48	1,611,998.30	31° 13' 43.375 N	101° 34' 29.082 W
6,122.0	14.70	286.60	5,959.6	305.5	-1,234.1	570,266.13	1,611,975.76	31° 13' 43.438 N	101° 34' 29.343 W
6,212.0	14.90	286.50	6,046.6	312.0	-1,256.1	570,272.68	1,611,953.72	31° 13' 43.500 N	101° 34' 29.597 W
6,301.0	14.90	286.70	6,132.6	318.6	-1,278.1	570,279.22	1,611,931.79	31° 13' 43.563 N	101° 34' 29.851 W
6,392.0	14.70	286.90	6,220.6	325.3	-1,300.3	570,285.94	1,611,909.54	31° 13' 43.627 N	101° 34' 30.108 W
6,481.0	14.00	286.50	6,306.8	331.6	-1,321.4	570,292.28	1,611,888.41	31° 13' 43.687 N	101° 34' 30.352 W
6,573.0	13.10	287.00	6,396.3	337.8	-1,342.1	570,298.49	1,611,867.77	31° 13' 43.746 N	101° 34' 30.591 W

Company:	Fleur De Lis Energy, LLC	Local Co-ordinate Reference:	Well University 9-31 #10H
Project:	Reagan County, Tx (NAD 27) USE	TVD Reference:	KB=25 @ 2804.0usft
Site:	Sec 19-30&31, Blk 9 & Sec 6, Blk 8	MD Reference:	KB=25 @ 2804.0usft
Well:	University 9-31 #10H	North Reference:	Grid
Wellbore:	Wellbore #1	Survey Calculation Method:	Minimum Curvature
Design:	Wellbore #1	Database:	EDM 5000.1 Multi User Db

Survey									
Measured Depth (usft)	Inclination (°)	Azimuth (°)	Vertical Depth (usft)	+N/-S (usft)	+E/-W (usft)	Map Northing (usft)	Map Easting (usft)	Latitude	Longitude
6,664.0	11.80	286.60	6,485.1	343.5	-1,360.9	570,304.16	1,611,848.99	31° 13' 43.800 N	101° 34' 30.808 W
6,755.0	10.60	286.20	6,574.4	348.5	-1,377.8	570,309.15	1,611,832.04	31° 13' 43.848 N	101° 34' 31.004 W
6,846.0	9.10	284.50	6,664.1	352.6	-1,392.8	570,313.29	1,611,817.03	31° 13' 43.887 N	101° 34' 31.177 W
6,937.0	6.90	285.70	6,754.2	355.9	-1,405.0	570,316.57	1,611,804.80	31° 13' 43.918 N	101° 34' 31.318 W
7,026.0	5.80	286.50	6,842.6	358.6	-1,414.5	570,319.30	1,611,795.34	31° 13' 43.944 N	101° 34' 31.427 W
7,117.0	5.00	284.00	6,933.2	360.9	-1,422.8	570,321.56	1,611,787.08	31° 13' 43.966 N	101° 34' 31.523 W
7,138.0	4.80	283.70	6,954.1	361.3	-1,424.5	570,321.99	1,611,785.34	31° 13' 43.970 N	101° 34' 31.543 W
7,248.0	3.90	282.30	7,063.8	363.2	-1,432.6	570,323.88	1,611,777.22	31° 13' 43.988 N	101° 34' 31.637 W
7,292.0	3.30	279.70	7,107.7	363.8	-1,435.3	570,324.41	1,611,774.51	31° 13' 43.993 N	101° 34' 31.668 W
7,382.0	2.50	282.00	7,197.6	364.6	-1,439.8	570,325.25	1,611,770.03	31° 13' 44.000 N	101° 34' 31.720 W
7,473.0	5.80	18.80	7,288.4	369.4	-1,440.3	570,330.02	1,611,769.57	31° 13' 44.048 N	101° 34' 31.726 W
7,519.0	10.60	16.60	7,334.0	375.6	-1,438.3	570,336.28	1,611,771.53	31° 13' 44.110 N	101° 34' 31.704 W
7,564.0	14.60	13.30	7,377.9	385.1	-1,435.8	570,345.77	1,611,774.02	31° 13' 44.204 N	101° 34' 31.676 W
7,609.0	18.50	6.40	7,421.0	397.7	-1,433.7	570,358.39	1,611,776.12	31° 13' 44.329 N	101° 34' 31.654 W
7,654.0	22.40	6.60	7,463.2	413.4	-1,431.9	570,374.01	1,611,777.90	31° 13' 44.484 N	101° 34' 31.635 W
7,699.0	26.60	10.10	7,504.1	431.8	-1,429.2	570,392.46	1,611,780.66	31° 13' 44.667 N	101° 34' 31.606 W
7,745.0	30.80	12.10	7,544.4	453.5	-1,424.9	570,414.12	1,611,784.93	31° 13' 44.882 N	101° 34' 31.560 W
7,791.0	35.30	10.10	7,583.0	478.1	-1,420.1	570,438.73	1,611,789.73	31° 13' 45.126 N	101° 34' 31.507 W
7,836.0	40.80	7.60	7,618.4	505.5	-1,415.9	570,466.13	1,611,793.96	31° 13' 45.397 N	101° 34' 31.462 W
7,870.0	45.08	5.55	7,643.3	528.5	-1,413.3	570,489.13	1,611,796.60	31° 13' 45.625 N	101° 34' 31.435 W
Cross Section Line 7870' MD/7643.3 TVD 528.5 N -1413.3 W N: 570489.1 E: 1611796.6									
7,882.0	46.60	4.90	7,651.7	537.1	-1,412.5	570,497.71	1,611,797.38	31° 13' 45.710 N	101° 34' 31.427 W
7,927.0	52.10	3.80	7,681.0	571.1	-1,409.9	570,531.74	1,611,799.96	31° 13' 46.047 N	101° 34' 31.402 W
7,973.0	55.70	2.20	7,708.1	608.2	-1,408.0	570,568.85	1,611,801.89	31° 13' 46.415 N	101° 34' 31.384 W
8,018.0	59.70	0.30	7,732.1	646.2	-1,407.1	570,606.86	1,611,802.70	31° 13' 46.791 N	101° 34' 31.380 W
8,062.0	61.50	359.30	7,753.7	684.5	-1,407.3	570,645.19	1,611,802.57	31° 13' 47.171 N	101° 34' 31.386 W
8,107.0	63.10	359.20	7,774.6	724.4	-1,407.8	570,685.03	1,611,802.05	31° 13' 47.565 N	101° 34' 31.397 W
8,152.0	67.40	359.90	7,793.5	765.2	-1,408.1	570,725.89	1,611,801.73	31° 13' 47.969 N	101° 34' 31.406 W
8,198.0	71.10	0.20	7,809.7	808.2	-1,408.1	570,768.90	1,611,801.77	31° 13' 48.395 N	101° 34' 31.411 W
8,242.0	71.10	0.20	7,824.0	849.9	-1,407.9	570,810.52	1,611,801.91	31° 13' 48.807 N	101° 34' 31.415 W
8,287.0	74.00	359.90	7,837.5	892.8	-1,407.9	570,853.45	1,611,801.95	31° 13' 49.232 N	101° 34' 31.420 W
8,332.0	80.40	0.30	7,847.5	936.7	-1,407.8	570,897.31	1,611,802.03	31° 13' 49.666 N	101° 34' 31.425 W
8,377.0	86.60	0.90	7,852.6	981.3	-1,407.3	570,941.99	1,611,802.50	31° 13' 50.108 N	101° 34' 31.425 W
8,467.0	90.10	1.50	7,855.1	1,071.3	-1,405.5	571,031.92	1,611,804.38	31° 13' 50.998 N	101° 34' 31.415 W
8,557.0	90.30	359.20	7,854.8	1,161.3	-1,404.9	571,121.91	1,611,804.93	31° 13' 51.889 N	101° 34' 31.420 W
8,646.0	90.70	359.40	7,854.1	1,250.3	-1,406.0	571,210.90	1,611,803.84	31° 13' 52.770 N	101° 34' 31.444 W
8,736.0	89.50	1.40	7,853.9	1,340.2	-1,405.4	571,300.90	1,611,804.47	31° 13' 53.661 N	101° 34' 31.449 W
8,826.0	89.80	1.40	7,854.4	1,430.2	-1,403.2	571,390.87	1,611,806.67	31° 13' 54.551 N	101° 34' 31.435 W
8,916.0	89.50	359.20	7,855.0	1,520.2	-1,402.7	571,480.86	1,611,807.14	31° 13' 55.442 N	101° 34' 31.441 W
9,007.0	90.10	358.40	7,855.3	1,611.2	-1,404.6	571,571.84	1,611,805.24	31° 13' 56.342 N	101° 34' 31.475 W
9,098.0	89.30	0.10	7,855.8	1,702.2	-1,405.8	571,662.82	1,611,804.05	31° 13' 57.243 N	101° 34' 31.500 W
9,189.0	89.90	1.60	7,856.4	1,793.2	-1,404.5	571,753.81	1,611,805.40	31° 13' 58.143 N	101° 34' 31.496 W
9,278.0	90.10	1.30	7,856.4	1,882.1	-1,402.2	571,842.78	1,611,807.65	31° 13' 59.024 N	101° 34' 31.482 W
9,369.0	90.00	2.10	7,856.3	1,973.1	-1,399.5	571,933.74	1,611,810.35	31° 13' 59.925 N	101° 34' 31.462 W
9,459.0	90.00	357.90	7,856.3	2,063.1	-1,399.5	572,023.72	1,611,810.35	31° 14' 0.815 N	101° 34' 31.474 W
9,549.0	90.30	359.70	7,856.1	2,153.0	-1,401.4	572,113.69	1,611,808.46	31° 14' 1.706 N	101° 34' 31.507 W
9,638.0	90.10	359.00	7,855.8	2,242.0	-1,402.4	572,202.69	1,611,807.45	31° 14' 2.586 N	101° 34' 31.530 W
9,728.0	90.10	359.80	7,855.6	2,332.0	-1,403.3	572,292.68	1,611,806.51	31° 14' 3.477 N	101° 34' 31.553 W
9,818.0	90.20	3.60	7,855.4	2,422.0	-1,400.7	572,382.63	1,611,809.18	31° 14' 4.368 N	101° 34' 31.533 W
9,908.0	90.40	2.70	7,854.9	2,511.8	-1,395.7	572,472.49	1,611,814.13	31° 14' 5.258 N	101° 34' 31.488 W
9,999.0	90.10	4.90	7,854.5	2,602.6	-1,389.7	572,563.28	1,611,820.16	31° 14' 6.157 N	101° 34' 31.430 W
10,090.0	90.20	3.70	7,854.3	2,693.4	-1,382.9	572,654.02	1,611,826.98	31° 14' 7.056 N	101° 34' 31.363 W
10,179.0	90.20	1.40	7,854.0	2,782.3	-1,378.9	572,742.93	1,611,830.94	31° 14' 7.936 N	101° 34' 31.329 W
10,270.0	89.70	4.70	7,854.1	2,873.1	-1,374.1	572,833.79	1,611,835.78	31° 14' 8.836 N	101° 34' 31.285 W
10,361.0	90.30	2.00	7,854.1	2,964.0	-1,368.8	572,924.62	1,611,841.10	31° 14' 9.736 N	101° 34' 31.235 W

Company:	Fleur De Lis Energy, LLC	Local Co-ordinate Reference:	Well University 9-31 #10H
Project:	Reagan County, Tx (NAD 27) USE	TVD Reference:	KB=25 @ 2804.0usft
Site:	Sec 19-30&31, Blk 9 & Sec 6, Blk 8	MD Reference:	KB=25 @ 2804.0usft
Well:	University 9-31 #10H	North Reference:	Grid
Wellbore:	Wellbore #1	Survey Calculation Method:	Minimum Curvature
Design:	Wellbore #1	Database:	EDM 5000.1 Multi User Db

Survey									
Measured Depth (usft)	Inclination (°)	Azimuth (°)	Vertical Depth (usft)	+N/-S (usft)	+E/-W (usft)	Map Northing (usft)	Map Easting (usft)	Latitude	Longitude
10,452.0	90.10	357.00	7,853.7	3,054.9	-1,369.5	573,015.59	1,611,840.30	31° 14' 10.636 N	101° 34' 31.256 W
10,542.0	90.20	359.20	7,853.5	3,144.9	-1,372.5	573,105.53	1,611,837.32	31° 14' 11.526 N	101° 34' 31.302 W
10,632.0	90.50	2.50	7,853.0	3,234.9	-1,371.2	573,195.51	1,611,838.65	31° 14' 12.416 N	101° 34' 31.298 W
10,723.0	89.70	3.00	7,852.8	3,325.8	-1,366.8	573,286.40	1,611,843.02	31° 14' 13.316 N	101° 34' 31.260 W
10,814.0	90.10	359.20	7,853.0	3,416.7	-1,365.1	573,377.37	1,611,844.77	31° 14' 14.217 N	101° 34' 31.251 W
10,906.0	90.00	1.50	7,852.9	3,508.7	-1,364.5	573,469.36	1,611,845.33	31° 14' 15.128 N	101° 34' 31.257 W
10,997.0	90.30	6.00	7,852.6	3,599.5	-1,358.6	573,560.14	1,611,851.28	31° 14' 16.027 N	101° 34' 31.200 W
11,088.0	89.90	2.90	7,852.5	3,690.2	-1,351.5	573,650.86	1,611,858.34	31° 14' 16.925 N	101° 34' 31.130 W
11,179.0	90.10	5.70	7,852.5	3,780.9	-1,344.7	573,741.59	1,611,865.16	31° 14' 17.824 N	101° 34' 31.063 W
11,270.0	89.70	2.20	7,852.6	3,871.7	-1,338.4	573,832.36	1,611,871.43	31° 14' 18.723 N	101° 34' 31.003 W
11,359.0	90.20	359.80	7,852.7	3,960.7	-1,336.9	573,921.34	1,611,872.98	31° 14' 19.604 N	101° 34' 30.996 W
11,450.0	90.10	357.80	7,852.5	4,051.7	-1,338.8	574,012.32	1,611,871.08	31° 14' 20.504 N	101° 34' 31.030 W
11,540.0	88.80	356.40	7,853.3	4,141.5	-1,343.3	574,102.19	1,611,866.52	31° 14' 21.393 N	101° 34' 31.094 W
11,631.0	90.30	358.70	7,854.1	4,232.4	-1,347.2	574,193.10	1,611,862.63	31° 14' 22.293 N	101° 34' 31.151 W
11,722.0	90.20	2.20	7,853.7	4,323.4	-1,346.5	574,284.08	1,611,863.35	31° 14' 23.193 N	101° 34' 31.154 W
11,812.0	89.40	358.40	7,854.0	4,413.4	-1,346.0	574,374.06	1,611,863.82	31° 14' 24.084 N	101° 34' 31.160 W
11,904.0	90.00	3.40	7,854.5	4,505.4	-1,344.6	574,466.02	1,611,865.26	31° 14' 24.994 N	101° 34' 31.155 W
11,995.0	89.80	1.40	7,854.6	4,596.3	-1,340.8	574,556.93	1,611,869.08	31° 14' 25.894 N	101° 34' 31.123 W
12,087.0	89.80	3.20	7,854.9	4,688.2	-1,337.1	574,648.86	1,611,872.77	31° 14' 26.805 N	101° 34' 31.092 W
12,176.0	89.60	1.00	7,855.4	4,777.1	-1,333.8	574,737.79	1,611,876.03	31° 14' 27.685 N	101° 34' 31.066 W
12,268.0	89.70	1.80	7,856.0	4,869.1	-1,331.6	574,829.76	1,611,878.28	31° 14' 28.596 N	101° 34' 31.052 W
12,357.0	90.30	2.80	7,856.0	4,958.0	-1,328.0	574,918.69	1,611,881.85	31° 14' 29.476 N	101° 34' 31.023 W
12,447.0	90.80	2.20	7,855.1	5,047.9	-1,324.1	575,008.60	1,611,885.77	31° 14' 30.367 N	101° 34' 30.989 W
12,537.0	88.70	357.90	7,855.5	5,137.9	-1,324.0	575,098.57	1,611,885.85	31° 14' 31.257 N	101° 34' 31.000 W
12,628.0	89.80	1.10	7,856.7	5,228.9	-1,324.8	575,189.54	1,611,885.06	31° 14' 32.157 N	101° 34' 31.020 W
12,719.0	89.70	1.20	7,857.1	5,319.9	-1,323.0	575,280.52	1,611,886.88	31° 14' 33.058 N	101° 34' 31.011 W
12,808.0	90.40	2.00	7,857.0	5,408.8	-1,320.5	575,369.49	1,611,889.37	31° 14' 33.939 N	101° 34' 30.994 W
12,898.0	89.30	357.00	7,857.2	5,498.8	-1,321.3	575,459.46	1,611,888.58	31° 14' 34.829 N	101° 34' 31.015 W
12,988.0	90.80	0.60	7,857.2	5,588.8	-1,323.1	575,549.42	1,611,886.70	31° 14' 35.719 N	101° 34' 31.048 W
13,078.0	91.70	0.90	7,855.2	5,678.7	-1,322.0	575,639.39	1,611,887.88	31° 14' 36.610 N	101° 34' 31.046 W
13,168.0	91.20	359.30	7,852.9	5,768.7	-1,321.8	575,729.36	1,611,888.03	31° 14' 37.501 N	101° 34' 31.056 W
13,255.0	88.56	359.40	7,853.1	5,855.7	-1,322.8	575,816.34	1,611,887.05	31° 14' 38.361 N	101° 34' 31.078 W
Cross Section Line 13255 MD/7853.1 TVD 5855.7 N -1322.8 W N: 575816.3 E: 1611887.0									
13,257.0	88.50	359.40	7,853.2	5,857.7	-1,322.8	575,818.34	1,611,887.03	31° 14' 38.381 N	101° 34' 31.079 W
13,347.0	90.10	5.00	7,854.3	5,947.6	-1,319.4	575,908.23	1,611,890.48	31° 14' 39.271 N	101° 34' 31.050 W
13,436.0	90.00	4.60	7,854.2	6,036.3	-1,311.9	575,996.92	1,611,897.93	31° 14' 40.150 N	101° 34' 30.976 W
13,526.0	89.60	3.30	7,854.5	6,126.1	-1,305.7	576,086.70	1,611,904.13	31° 14' 41.039 N	101° 34' 30.916 W
13,615.0	90.90	4.40	7,854.1	6,214.8	-1,299.7	576,175.50	1,611,910.10	31° 14' 41.919 N	101° 34' 30.859 W
13,704.0	88.60	359.20	7,854.5	6,303.8	-1,297.0	576,264.41	1,611,912.90	31° 14' 42.799 N	101° 34' 30.838 W
13,794.0	89.80	1.10	7,855.8	6,393.7	-1,296.7	576,354.40	1,611,913.13	31° 14' 43.690 N	101° 34' 30.847 W
13,883.0	90.10	2.10	7,855.8	6,482.7	-1,294.2	576,443.36	1,611,915.62	31° 14' 44.571 N	101° 34' 30.830 W
13,973.0	90.20	360.00	7,855.6	6,572.7	-1,292.6	576,533.34	1,611,917.27	31° 14' 45.461 N	101° 34' 30.822 W
14,062.0	90.00	358.80	7,855.4	6,661.7	-1,293.5	576,622.34	1,611,916.33	31° 14' 46.342 N	101° 34' 30.844 W
14,152.0	90.00	355.60	7,855.4	6,751.6	-1,297.9	576,712.22	1,611,911.94	31° 14' 47.231 N	101° 34' 30.907 W
14,243.0	89.30	357.70	7,856.0	6,842.4	-1,303.2	576,803.05	1,611,906.62	31° 14' 48.130 N	101° 34' 30.980 W
14,334.0	88.30	1.10	7,857.9	6,933.4	-1,304.2	576,894.02	1,611,905.67	31° 14' 49.030 N	101° 34' 31.002 W
14,423.0	88.20	1.60	7,860.6	7,022.3	-1,302.1	576,982.95	1,611,907.76	31° 14' 49.910 N	101° 34' 30.990 W
14,512.0	88.00	1.60	7,863.6	7,111.2	-1,299.6	577,071.87	1,611,910.25	31° 14' 50.790 N	101° 34' 30.972 W
14,602.0	87.10	1.20	7,867.4	7,201.1	-1,297.4	577,161.75	1,611,912.44	31° 14' 51.680 N	101° 34' 30.959 W
14,691.0	89.60	2.20	7,870.0	7,290.0	-1,294.8	577,250.67	1,611,915.08	31° 14' 52.561 N	101° 34' 30.940 W
14,781.0	90.70	4.60	7,869.7	7,379.9	-1,289.4	577,340.50	1,611,920.42	31° 14' 53.450 N	101° 34' 30.890 W
14,872.0	91.10	5.50	7,868.3	7,470.5	-1,281.4	577,431.14	1,611,928.43	31° 14' 54.348 N	101° 34' 30.809 W
14,963.0	94.00	4.90	7,864.3	7,561.0	-1,273.2	577,521.66	1,611,936.67	31° 14' 55.245 N	101° 34' 30.726 W
15,053.0	91.30	1.90	7,860.1	7,650.7	-1,267.9	577,611.39	1,611,942.00	31° 14' 56.134 N	101° 34' 30.676 W
15,144.0	90.70	2.80	7,858.5	7,741.6	-1,264.1	577,702.30	1,611,945.73	31° 14' 57.034 N	101° 34' 30.645 W

Company:	Fleur De Lis Energy, LLC	Local Co-ordinate Reference:	Well University 9-31 #10H
Project:	Reagan County, Tx (NAD 27) USE	TVD Reference:	KB=25 @ 2804.0usft
Site:	Sec 19-30&31, Blk 9 & Sec 6, Blk 8	MD Reference:	KB=25 @ 2804.0usft
Well:	University 9-31 #10H	North Reference:	Grid
Wellbore:	Wellbore #1	Survey Calculation Method:	Minimum Curvature
Design:	Wellbore #1	Database:	EDM 5000.1 Multi User Db

Survey

Measured Depth (usft)	Inclination (°)	Azimuth (°)	Vertical Depth (usft)	+N/-S (usft)	+E/-W (usft)	Map Northing (usft)	Map Easting (usft)	Latitude	Longitude
15,236.0	90.30	1.40	7,857.7	7,833.6	-1,260.7	577,794.23	1,611,949.10	31° 14' 57.944 N	101° 34' 30.618 W
15,325.0	90.50	358.90	7,857.1	7,922.6	-1,260.5	577,883.22	1,611,949.33	31° 14' 58.825 N	101° 34' 30.626 W
15,415.0	91.00	0.80	7,855.9	8,012.6	-1,260.8	577,973.21	1,611,949.10	31° 14' 59.716 N	101° 34' 30.641 W
15,504.0	90.00	357.70	7,855.1	8,101.5	-1,261.9	578,062.19	1,611,947.93	31° 15' 0.596 N	101° 34' 30.666 W
15,593.0	90.70	359.50	7,854.6	8,190.5	-1,264.1	578,151.15	1,611,945.76	31° 15' 1.477 N	101° 34' 30.702 W
15,683.0	88.90	357.10	7,854.9	8,280.5	-1,266.8	578,241.10	1,611,943.09	31° 15' 2.367 N	101° 34' 30.744 W
15,772.0	87.70	356.90	7,857.5	8,369.3	-1,271.4	578,329.94	1,611,938.43	31° 15' 3.245 N	101° 34' 30.809 W
15,820.8	88.13	357.55	7,859.3	8,418.0	-1,273.8	578,378.61	1,611,936.07	31° 15' 3.727 N	101° 34' 30.843 W
LTP/PBHL University 9-31 #10H Plan #5									
15,821.2	88.13	357.55	7,859.3	8,418.4	-1,273.8	578,379.06	1,611,936.05	31° 15' 3.731 N	101° 34' 30.843 W
LTP/PBHL University 9-31 #10H									
15,821.7	88.14	357.56	7,859.4	8,418.9	-1,273.8	578,379.53	1,611,936.03	31° 15' 3.736 N	101° 34' 30.843 W
LTP/PBHL University 9-31 #10H Plan #6									
15,822.0	88.14	357.56	7,859.4	8,419.2	-1,273.8	578,379.85	1,611,936.02	31° 15' 3.739 N	101° 34' 30.844 W
Cross 100' FNL 15822 MD/7859.4 TVD 8419.2 N -1273.8 W N: 578379.8 E: 1611936.0									
15,840.0	88.30	357.80	7,859.9	8,437.2	-1,274.6	578,397.83	1,611,935.29	31° 15' 3.917 N	101° 34' 30.854 W
MWD Survey 15840 MD/7859.9 TVD 8437.2 N -1274.6 W N: 578397.8 E: 1611935.2									
15,890.0	88.30	357.80	7,861.4	8,487.1	-1,276.5	578,447.77	1,611,933.37	31° 15' 4.411 N	101° 34' 30.883 W
PTB 15890 MD/7861.4 TVD 8487.1 N -1276.5 W N: 578447.7 E: 1611933.3									

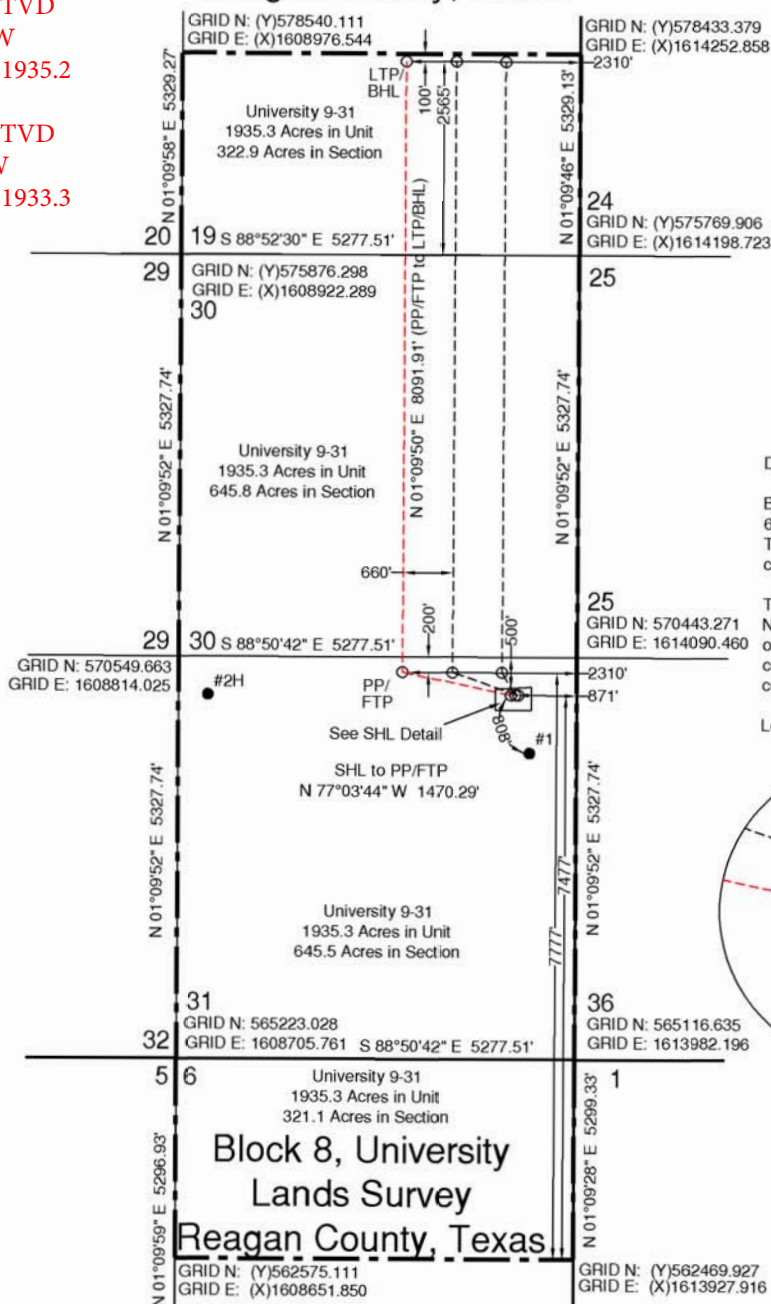
Survey Annotations

Measured Depth (usft)	Vertical Depth (usft)	Local Coordinates		Comment
		+N/-S (usft)	+E/-W (usft)	
781.0	780.9	13.7	1.1	Tie-On Survey 781 MD/780.9 TVD
7,870.0	7,643.3	528.5	-1,413.3	Cross Section Line 7870' MD/7643.3 TVD 528.5 N -1413.3 W N: 570489.1 E: 1611936.0
13,255.0	7,853.1	5,855.7	-1,322.8	Cross Section Line 13255 MD/7853.1 TVD 5855.7 N -1322.8 W N: 575816.3 E: 1611935.2
15,822.0	7,859.4	8,419.2	-1,273.8	Cross 100' FNL 15822 MD/7859.4 TVD 8419.2 N -1273.8 W N: 578379.8 E: 1611936.0
15,840.0	7,859.9	8,437.2	-1,274.6	MWD Survey 15840 MD/7859.9 TVD 8437.2 N -1274.6 W N: 578397.8 E: 1611935.2
15,890.0	7,861.4	8,487.1	-1,276.5	PTB 15890 MD/7861.4 TVD 8487.1 N -1276.5 W N: 578447.7 E: 1611933.3

Checked By: _____	Approved By: _____	Date: _____
-------------------	--------------------	-------------

Last MWD Survey
 15840 MD/7859.9 TVD
 8437.2 N -1274.6 W
 N: 578397.8 E: 1611935.2
 PTB
 15890 MD/7861.4 TVD
 8487.1N -1276.3 W
 N: 578447.7 E: 1611933.3

Block 9, University Lands Survey Reagan County, Texas



Last Take Point/
 Bottom Hole Location (LTP/BHL)
 GRID N: (Y)578380.119
 GRID E: (X)1611941.233
 NAD'83 Lat/Long
 Lat: 31°15'04.289" N
 Long: 101°34'32.213" W

Penetration Point (PP)/ First Take
 Point (FTP)
 GRID N: (Y)570289.881
 GRID E: (X)1611776.865
 NAD'83 Lat/Long
 Lat: +31°13'44.200"
 Long: -101°34'33.066"

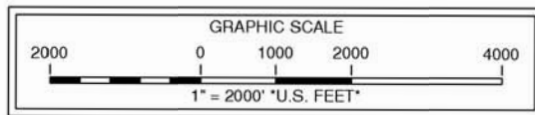
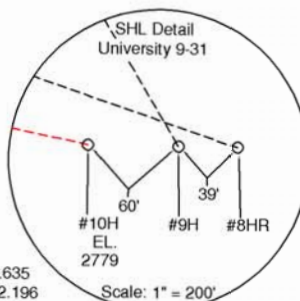
Surface Hole Location (SHL)
 GRID N: (Y)569960.647
 GRID E: (X)1613209.852
 NAD'83 Lat/Long
 Lat: +31°13'41.100"
 Long: -101°34'16.519"

Driving Directions:

Beginning at the intersection of US Highway
 67 & ST Highway 137 in Big Lake, Texas,
 Travel West for 6.7 Miles to a lease road at
 coordinates 31°12'54.99" N, 101°34'39.02" N.

Turn Right (North) on lease road and travel
 North for 1/2 of a mile to the first intersection
 of a lease road to the right. Turn right (East) &
 continue for a total distance of 1 mile to
 coordinates 31°13'34.61" N, 101°34'16.75" W.

Location is 659.5 feet to the left (North).



Note: Well is located 7.0 miles Northwest of the city of Big Lake, Texas.
 Note: Survey Reconstruction filed in the Office of Pennell & Marlowe Land Surveyors, Inc.
 Note: Coordinates shown herein are on The Texas Coordinate System of 1927, Central Zone.
 Note: Bearings and distances are based on The Texas Coordinate System of 1927, Central Zone.
 Note: Example: (S-999999) indicates General Land Office file number.



Stephen P. Marlowe
 REGISTERED PROFESSIONAL LAND SURVEYOR NO. 5715

March 23, 2017

170323JR-BLS

P.O. Box 51887 Midland Texas 79710 (409) 262-0001 Fax (409) 262-0670 Firm #100201-00

Revised: 06/12/17 BLS
 USGS Quadrangle Sheet: Best, Tex.

Hailroad Commission Permit Plat
 FDL OPERATING, LLC.
 University 9-31 #10H
 500' FROM NORTH LINE
 871' FROM EAST LINE
 University 9-31 Unit
 1935.3 Acres (Called) in Unit
 Sections 19, 30 & 31, Block 9, &
 Section 6, Block 8
 University Lands Survey
 Reagan County, Texas
 Scale: 1" = 2000'



Survey Certification Form

STATE OF TEXAS

REAGAN COUNTY

I **Christina Myers**, certify that; I am employed **Integrity Directional Services**; that I did on the day(s) of **09/19/2017** through **09/25/2017** conduct or supervise the taking of MWD surveys from a depth of **862 feet** to a depth of **15840 feet** & Project to TD **15890 feet**. The data is true, correct, complete, and within the limitations of the tool set forth by Integrity Directional Services. I am authorized and qualified to make this report, and that this report was conducted at the request of **FDL Operating, LLC.**, for the **University 9-31 #10H**, API # **42-383-39908** drilled in **Reagan** County, Texas. I have reviewed this report and find that it conforms to the principles and procedures as set forth by Integrity Directional Services.

Christina Myers

Christina Myers
Well Planner