



RAILROAD COMMISSION OF TEXAS

Form W-2

1701 N. Congress
P.O. Box 12967
Austin, Texas 78701-2967

Status: Approved
Date: 01/10/2018
Tracking No.: 183941

OIL WELL POTENTIAL TEST, COMPLETION OR RECOMPLETION REPORT, AND LOG

OPERATOR INFORMATION	
Operator Name: PT PETROLEUM, LLC	Operator No.: 682074
Operator Address: 2701 DALLAS PARKWAY STE 580 PLANO, TX 75093-0000	

WELL INFORMATION	
API No.: 42-383-39858	County: REAGAN
Well No.: 1041A	RRC District No.: 7C
Lease Name: UNIVERSITY ORANGE	Field Name: SPRABERRY (TREND AREA)
RRC Lease No.: 19444	Field No.: 85279200
Location: Section: 4, Block: 1, Survey: UL, Abstract: U4	
Latitude: 31	Longitude: -101
This well is located 14.1 miles in a SE direction from RANKIN, which is the nearest town in the county.	

FILING INFORMATION		
Purpose of filing: Initial Potential		
Type of completion: New Well		
Well Type: Producing	Completion or Recompletion Date:	08/15/2017
Type of Permit	Date	Permit No.
Permit to Drill, Plug Back, or Deepen	04/26/2017	825451
Rule 37 Exception		
Fluid Injection Permit		
O&G Waste Disposal Permit		
Other:		

COMPLETION INFORMATION			
Spud date: 05/29/2017	Date of first production after rig released:	08/15/2017	
Date plug back, deepening, recompletion, or drilling operation commenced: 05/30/2017	Date plug back, deepening, recompletion, or drilling operation ended:	06/10/2017	
Number of producing wells on this lease in this field (reservoir) including this well: 2	Distance to nearest well in lease & reservoir (ft.):	23220.0	
Total number of acres in lease: 14638.59	Elevation (ft.):	2769	GL
Total depth TVD (ft.): 7545	Total depth MD (ft.):	17665	
Plug back depth TVD (ft.):	Plug back depth MD (ft.):	17618	
Was directional survey made other than inclination (Form W-12)? Yes	Rotation time within surface casing (hours):	108.0	
Recompletion or reclass? No	Is Cementing Affidavit (Form W-15) attached?	Yes	
Type(s) of electric or other log(s) run: Gamma Ray (MWD)	Multiple completion?	No	
Electric Log Other Description:			
Location of well, relative to nearest lease boundaries	Off Lease :	No	
of lease on which this well is located:	2344.0 Feet from the	West	Line and
	10491.0 Feet from the	North	Line of the
UNIVERSITY ORANGE Lease.			
FORMER FIELD (WITH RESERVOIR) & GAS ID OR OIL LEASE NO.			
Field & Reservoir	Gas ID or Oil Lease No.	Well No.	Prior Service Type
PACKET:	N/A		

W2:	N/A		
FOR NEW DRILL OR RE-ENTRY, SURFACE CASING DEPTH DETERMINED BY:			
GAU Groundwater Protection Determination	Depth (ft.):	750.0	Date: 04/19/2017
SWR 13 Exception	Depth (ft.):	1300.0	

INITIAL POTENTIAL TEST DATA FOR NEW COMPLETION OR RECOMPLETION		
Date of test: 11/10/2017		Production method: Gas Lift
Number of hours tested: 24		Choke size: 64/64
Was swab used during this test? No		Oil produced prior to test:
PRODUCTION DURING TEST PERIOD:		
Oil (BBLS): 203.00		Gas (MCF): 144
Gas - Oil Ratio: 709		Flowing Tubing Pressure: 275.00
Water (BBLS): 2208		
CALCULATED 24-HOUR RATE		
Oil (BBLS): 203.0		Gas (MCF): 144
Oil Gravity - API - 60.: 39.0		Casing Pressure: 125.00
Water (BBLS): 2208		

CASING RECORD											
Row	Type of Casing	Casing Size (in.)	Hole Size (in.)	Setting Depth (ft.)	Multi - Stage Depth (ft.)	Multi - Shoe Depth (ft.)	Cement Class	Cement Amount (sacks)	Slurry Volume (cu. ft.)	Top of Cement (ft.)	TOC Determined By
1	Surface	9 5/8	12 1/4	1263			C	505	794.0	0	Circulated to Surface
2	Conventional Production	5 1/2	8 1/2	17665			NEOCEM	2495	4649.6	500	Temperature Survey

LINER RECORD									
Row	Liner Size (in.)	Hole Size (in.)	Liner Top (ft.)	Liner Bottom (ft.)	Cement Class	Cement Amount (sacks)	Slurry Volume (cu. ft.)	Top of Cement (ft.)	TOC Determined By
N/A									

TUBING RECORD			
Row	Size (in.)	Depth	Size (ft.)
1	2 7/8	6473	
			Packer Depth (ft.)/Type
			6473 / ARROW SET 1X

PRODUCING/INJECTION/DISPOSAL INTERVAL			
Row	Open hole?	From (ft.)	To (ft.)
1	No	L1 7758	17543.0

ACID, FRACTURE, CEMENT SQUEEZE, CAST IRON BRIDGE PLUG, RETAINER, ETC.			
Was hydraulic fracturing treatment performed? Yes			
Is well equipped with a downhole actuation sleeve? No			
If yes, actuation pressure (PSIG):			
Production casing test pressure (PSIG) prior to hydraulic fracturing treatment: 9600			
Actual maximum pressure (PSIG) during hydraulic fracturing: 9250			
Has the hydraulic fracturing fluid disclosure been reported to FracFocus disclosure registry (SWR29)? Yes			
Row	Type of Operation	Amount and Kind of Material Used	Depth Interval (ft.)
1	Fracture	19,455,191 # SAND W/ 369,994 BBL FRAC	7758 17543

FORMATION RECORD					
Formations	Encountered	Depth TVD (ft.)	Depth MD (ft.)	Is formation isolated?	Remarks
GRAYBURG	Yes	3299.0	3299.0	Yes	PROD TOC @ 500'
QUEEN	Yes	2764.0	2764.0	Yes	PROD TOC @ 500'
SAN ANDRES - SALTWATER FLOW, POSSIBLY HEAVY CLEARFORK	Yes	3632.0	3632.0	Yes	PROD TOC @ 500'
SPRABERRY	No			No	PINCHED OUT
STRAWN	Yes	5979.0	5979.0	Yes	7758-17543'; PROD TOC @ 500'
FUSSELMAN	No			No	DID NOT DRILL THIS DEEP
ELLENBURGER	No			No	DID NOT DRILL THIS DEEP

Do the producing interval of this well produce H2S with a concentration in excess of 100 ppm (SWR 36)?

No

Is the completion being downhole commingled (SWR 10)?

No

REMARKS
KOP @ 6547'.

RRC REMARKS
<div>PUBLIC COMMENTS: [RRC Staff 2017-12-21 17:16:50.238] EDL=9771 feet, max acres=640, SPRABERRY (TREND AREA) oil well</div> <div>CASING RECORD :</div> <div>TUBING RECORD:</div> <div>PRODUCING/INJECTION/DISPOSAL INTERVAL :</div> <div>ACID, FRACTURE, CEMENT SQUEEZE, CAST IRON BRIDGE PLUG, RETAINER, ETC. :</div> <div>POTENTIAL TEST DATA:</div>

OPERATOR'S CERTIFICATION	
Printed Name: Ann Ritchie	Title:
Telephone No.: (432) 684-6381	Date Certified: 12/07/2017



RAILROAD COMMISSION OF TEXAS

1701 N. Congress

P.O. Box 12967

Austin, Texas 78701-2967

Form W-15

Rev. 08/2014

CEMENTING REPORT

Cementer: Fill in shaded areas.
Operator: Fill in other items.

OPERATOR INFORMATION

Operator Name: PT PETROLEUM LLC

Operator P-5 No.: 682074

Cementer Name: HALLIBURTON ENERGY SERVICES

Cementer P-5 No.: 347151

WELL INFORMATION

District No.: 7C

County: REAGAN

Well No.: 1041A

API No.: 383-39858

Drilling Permit No.: 825451

Lease Name: UNIVERSITY ORANGE

Lease No.: 19444

Field Name: SPRABERRY (TREND AREA)

Field No.: 85279200

I. CASING CEMENTING DATA

Type of casing: ☐ Conductor ☒ Surface ☐ Intermediate ☐ Liner ☐ Production

Drilled hole size (in.): 12 1/4"

Depth of drilled hole (ft.): 1243'

Est. % wash-out or hole enlargement: 30

Size of casing in O.D. (in.): 9 5/8"

Casing weight (lbs/ft) and grade: 36#

No. of centralizers used: 5

Was cement circulated to ground surface (or bottom of cellar) outside casing? ☒ YES ☐ NO If no for surface casing, explain in Remarks.

Setting depth shoe (ft.):

Top of liner (ft.):

1243'

Setting depth liner (ft.):

Hrs. waiting on cement before drill-out: 6+

Calculated top of cement (ft.): 0'

Cementing date: 5/30/2017

SLURRY

Slurry No.	No. of Sacks	Class	Additives	Volume (cu. ft.)	Height (ft.)
1	350	C	NA	583	1864
2	155	C	POLY-E FLAKE / CALCIUM CHLORIDE / BOL-SEAL	211	580
3					
Total	505			794	2444

II. CASING CEMENTING DATA

Type of casing: ☐ Surface ☐ Intermediate ☐ Production ☐ Tapered production ☐ Multi-stage cement shoe ☐ Multiple parallel strings

Drilled hole size (in.):

Depth of drilled hole (ft.):

Est. % wash-out or hole enlargement:

Size of casing in O.D. (in.):

Casing weight (lbs/ft) and grade:

No. of centralizers used:

Tapered string drilled hole size (in.)

Tapered string depth of drilled hole (ft.)

Upper: Lower:

Upper: Lower:

Tapered string size of casing in O.D. (in.)

Tapered string casing weight (lbs/ft) and grade

Tapered string no. of centralizers used

Upper: Lower:

Upper: Lower:

Upper: Lower:

Was cement circulated to ground surface (or bottom of cellar) outside casing? ☐ YES ☐ NO

Setting depth shoe (ft.):

Hrs. waiting on cement before drill-out:

Calculated top of cement (ft.):

Cementing date:

SLURRY

Slurry No.	No. of Sacks	Class	Additives	Volume (cu. ft.)	Height (ft.)
1					
2					
3					
Total	0			0	0

III. CASING CEMENTING DATA

Type of casing: ☐ Surface ☐ Intermediate ☐ Production ☐ Tapered production ☐ Multi-stage cement/DV tool ☐ Multiple parallel strings

Drilled hole size (in.):

Depth of drilled hole (ft.):

Est. % wash-out or hole enlargement:

Size of casing in O.D. (in.):

Casing weight (lbs/ft) and grade:

No. of centralizers used:

Tapered string drilled hole size (in.)

Tapered string depth of drilled hole (ft.)

Upper: Lower:

Upper: Lower:

Tapered string size of casing in O.D. (in.)

Tapered string casing weight (lbs/ft) and grade

Tapered string no. of centralizers used

Upper: Lower:

Upper: Lower:

Upper: Lower:

Was cement circulated to ground surface (or bottom of cellar) outside casing? ☐ YES ☐ NO

Setting depth tool (ft.):

Hrs. waiting on cement before drill-out:

Calculated top of cement (ft.):

Cementing date:

SLURRY

Slurry No.	No. of Sacks	Class	Additives	Volume (cu. ft.)	Height (ft.)
1					
2					
3					
Total	0			0	0

CEMENTING TO SQUEEZE, PLUG BACK OR PLUG AND ABANDON							
	PLUG #1	PLUG #2	PLUG #3	PLUG #4	PLUG #5	PLUG #6	PLUG #7
Cementing Date							
Size of hole or pipe (in.)							
Depth to bottom of tubing or drill pipe (ft.)							
Cement retainer setting depth (ft.)							
CIBP setting depth (ft.)							
Amount of cement on top of CIBP (ft.)							
Sacks of cement used							
Slurry volume pumped (cu. ft.)							
Calculated top of plug (ft.)							
Measured top of plug, if tagged (ft.)							
Slurry weight (lbs/gal)							
Class/type of cement							
Perforate and squeeze (YES/NO)							

REMARKS

Circulated 53bbbls / 181sks to surface
SO: 904032452

CEMENTER'S CERTIFICATE: I declare under penalties prescribed in Sec. 91.143, Texas Natural Resources Code, that I am authorized to make this certification, that the cementing of casing and/or the placing of cement plugs in this well as shown in the report was performed by me or under my supervision, and that the cementing data and facts presented on both sides of this form are true, correct, and complete, to the best of my knowledge. This certification covers cementing data only.

Christopher Peacock - Service Supervisor

Halliburton

Chr Peacock
Signature

Name and title of cementer's representative

Cementing Company

6155 W. Murphy St.

Odessa, TX, 79763

432-571-8600

Address

City, State, Zip Code

Tel: Area Code Number

09/30/2017
Date: mo. day yr.

OPERATOR'S CERTIFICATE: I declare under penalties prescribed in Sec. 91.143, Texas Natural Resources Code, that I am authorized to make this certification, that I have knowledge of the well data and information presented in this report, and that data and facts presented on both sides of this form are true, correct, and complete, to the best of my knowledge. This certification covers all well data.

Ann E. Ritchie

Regulatory
Title

Ann E. Ritchie
Signature

Typed or printed name of operator's representative

2701 Dallas Parkway, Ste 580

Plano, TX 75093

432-684-6381

12/5/17

Address

City, State, Zip Code

Tel: Area Code Number

Date: mo. day yr.

Instructions for Form W-15, Cementing Report

NOTICE: The Form W-15 must be submitted as an attachment to a Form G-1 (Gas Well Back Pressure Test, Completion or Recompletion Report, and Log), Form W-2 (Oil Well Potential Test, Completion or Recompletion Report, and Log), Form W-3 (Plugging Record), or Form W-4 (Application for Multiple Completion), any time cement is pumped in a wellbore.

- What to file:** An operator should file an original and one copy of the completed Form W-15 for each cementing company used on a well. The cementing of different casing strings on a well by one cementing company may be reported on one form.
The Form W-15 should be filed with the Form W-3, Plugging Record, unless the Form W-3 is signed by the cementing company representative. When reporting dry holes, operators must complete Form W-15, in addition to Form W-3, to show any casing cemented in the hole.
- How to file:** An oil and gas completion report and Form W-15 may be filed online using the Commission's Online System (<http://webapps.rrc.state.tx.us/security/login.do>) or a paper copy of the form may be mailed to the Commission in Austin (P.O. Box 12967, Austin, Texas 78711-2967).
- Surface casing:** An operator must set and cement sufficient surface casing to protect all usable-quality water strata, as defined by the Groundwater Advisory Unit in Austin. Sufficient cement shall be used to fill the annular space outside the casing from the shoe to the ground surface or to the bottom of the cellar. Before drilling a well, an operator must obtain a letter from the Groundwater Advisory Unit stating the protection depth. Surface casing should not be set deeper than 200 feet below the specified depth without prior approval from the Commission.
- Plug and abandon a well:** operators must use only cementers approved by the Commission's Director of Field Operations in accordance with SWR 14 ([http://info.sos.state.tx.us/pls/pub/readtac\\$ext.TacPage?sl=R&app=9&p_dir=&p_rloc=&p_tloc=&p_ploc=&pg=1&p_tac=&ti=16&pt=1&ch=3&rl=14](http://info.sos.state.tx.us/pls/pub/readtac$ext.TacPage?sl=R&app=9&p_dir=&p_rloc=&p_tloc=&p_ploc=&pg=1&p_tac=&ti=16&pt=1&ch=3&rl=14)). Cementing companies, service companies, or operators can qualify as approved cementers by demonstrating that they are able to mix and pump cement in compliance with Commission rules and regulations.
- Estimated % wash-out:** If the estimated % wash-out is less than 20% (or 30% along the Gulf Coast), provide supporting documentation such as a caliper log to show how the estimated % wash-out was obtained.
- Multi-stage cement:** An operator must report the multi-stage cement shoe in II. Casing Cementing Data section by selecting the type of casing and Multi-stage cement shoe. The operator must report the multi-stage cement tool in III. Casing Cementing Data section by selecting the type of casing and Multi-stage cement/DV tool.
- Multiple parallel strings:** An operator should file the Form W-15 as an attachment to the Form W-4, Application for Multiple Completion. An operator may be required to submit multiple Form W-15s to show all data for multiple parallel strings.
- Slurry data:** If cement job exceeds three slurries, continue the list of slurries in the Slurry table in the subsequent Casing Cementing Data box.



RAILROAD COMMISSION OF TEXAS

1701 N. Congress
P.O. Box 12967
Austin, Texas 78701-2967

Form W-15

Rev. 08/2014

CEMENTING REPORT

Cementer: Fill in shaded areas.
Operator: Fill in other items.

OPERATOR INFORMATION

Operator Name: PT PETROLEUM LLC-BBIS

Operator P-5 No.: 682074

Cementer Name: HALLIBURTON ENERGY SERVICES

Cementer P-5 No.: 347151

WELL INFORMATION

District No.: 7C

County: NEAGAN

Well No.: #1041A

API No.: 383.39858

Drilling Permit No.: 825451

Lease Name: UNIVERSITY ORANGE

Lease No.: 19444

Field Name: SPRABERRY (TREND AREA)

Field No.: 85280300

I. CASING CEMENTING DATA

Type of casing: ☐ Conductor ☐ Surface ☐ Intermediate ☐ Liner ☒ Production

Drilled hole size (in.): 8 1/2"

Depth of drilled hole (ft.): 17,465'

Est. % wash-out or hole enlargement: 30

Size of casing in O.D. (in.): 5 1/2"

Casing weight (lbs/ft) and grade: 20 #

No. of centralizers used: 165

Was cement circulated to ground surface (or bottom of cellar) outside casing? ☐ YES ☒ NO If no for surface casing, explain in Remarks.

Setting depth shoe (ft.):

Top of liner (ft.):

17,460'

Setting depth liner (ft.):

Hrs. waiting on cement before drill-out:

Calculated top of cement (ft.): 500'

Cementing date: 06-10-2017

SLURRY

Slurry No.	No. of Sacks	Class	Additives	Volume (cu. ft.)	Height (ft.)
1	645	NEOCEN	1250 POLY E FLAKE	1813.1	6741.33
2	1700	NEOCEN	1250 POLY E FLAKE, 20 KOLSEAL	2512.6	10727.65
3	150	NEOCEN		373.85	1387.25
Total	2495			4699.55	18856.23

II. CASING CEMENTING DATA

Type of casing: ☐ Surface ☐ Intermediate ☐ Production ☐ Tapered production ☐ Multi-stage cement shoe ☐ Multiple parallel strings

Drilled hole size (in.):

Depth of drilled hole (ft.):

Est. % wash-out or hole enlargement:

Size of casing in O.D. (in.):

Casing weight (lbs/ft) and grade:

No. of centralizers used:

Tapered string drilled hole size (in.)

Tapered string depth of drilled hole (ft.)

Upper:

Lower:

Upper:

Lower:

Tapered string size of casing in O.D. (in.)

Tapered string casing weight (lbs/ft) and grade

Tapered string no. of centralizers used

Upper:

Lower:

Upper:

Lower:

Upper:

Lower:

Was cement circulated to ground surface (or bottom of cellar) outside casing? ☐ YES ☐ NO

Setting depth shoe (ft.):

Hrs. waiting on cement before drill-out:

Calculated top of cement (ft.):

Cementing date:

SLURRY

Slurry No.	No. of Sacks	Class	Additives	Volume (cu. ft.)	Height (ft.)
1					
2					
3					
Total	0			0	0

III. CASING CEMENTING DATA

Type of casing: ☐ Surface ☐ Intermediate ☐ Production ☐ Tapered production ☐ Multi-stage cement/DV tool ☐ Multiple parallel strings

Drilled hole size (in.):

Depth of drilled hole (ft.):

Est. % wash-out or hole enlargement:

Size of casing in O.D. (in.):

Casing weight (lbs/ft) and grade:

No. of centralizers used:

Tapered string drilled hole size (in.)

Tapered string depth of drilled hole (ft.)

Upper:

Lower:

Upper:

Lower:

Tapered string size of casing in O.D. (in.)

Tapered string casing weight (lbs/ft) and grade

Tapered string no. of centralizers used

Upper:

Lower:

Upper:

Lower:

Upper:

Lower:

Was cement circulated to ground surface (or bottom of cellar) outside casing? ☐ YES ☐ NO

Setting depth tool (ft.):

Hrs. waiting on cement before drill-out:

Calculated top of cement (ft.):

Cementing date:

SLURRY

Slurry No.	No. of Sacks	Class	Additives	Volume (cu. ft.)	Height (ft.)
1					
2					
3					
Total	0			0	0

CEMENTING TO SQUEEZE, PLUG BACK OR PLUG AND ABANDON

	PLUG #1	PLUG #2	PLUG #3	PLUG #4	PLUG #5	PLUG #6	PLUG #7
Cementing Date							
Size of hole or pipe (in.)							
Depth to bottom of tubing or drill pipe (ft.)							
Cement retainer setting depth (ft.)							
CIBP setting depth (ft.)							
Amount of cement on top of CIBP (ft.)							
Sacks of cement used							
Slurry volume pumped (cu. ft.)							
Calculated top of plug (ft.)							
Measured top of plug, if tagged (ft.)							
Slurry weight (lbs/gal)							
Class/type of cement							
Perforate and squeeze (YES/NO)							

REMARKS

SO# 0904087079, PT PETROLEUM LLC-EBUS, UNIVERSITY ORANGE, # 1041A- PRODUCTION
DID NOT CIRCULATE CEMENT TO SURFACE. CIRCULATED 20 BBLs SPACER TO SURFACE.

CEMENTER'S CERTIFICATE: I declare under penalties prescribed in Sec. 91.143, Texas Natural Resources Code, that I am authorized to make this certification, that the cementing of casing and/or the placing of cement plugs in this well as shown in the report was performed by me or under my supervision, and that the cementing data and facts presented on both sides of this form are true, correct, and complete, to the best of my knowledge. This certification covers cementing data only.

CHRISTOPHER J. SOTO

Halliburton

Name and title of cementer's representative

Cementing Company

Signature

1301 W. Webb St.

Brownfield, Tx, 79316

575-392-0700

06-10-2017

Address

City, State, Zip Code

Tel: Area Code

Number

Date: mo. day yr.

OPERATOR'S CERTIFICATE: I declare under penalties prescribed in Sec. 91.143, Texas Natural Resources Code, that I am authorized to make this certification, that I have knowledge of the well data and information presented in this report, and that data and facts presented on both sides of this form are true, correct, and complete, to the best of my knowledge. This certification covers all well data.

Ann E. Ritchie

Regulatory

Typed or printed name of operator's representative

Title

Signature

2701 Dallas Pkwy, Ste 580,

Plano, TX 75093

432-684-6381

12/5/17

Address

City, State, Zip Code

Tel: Area Code

Number

Date: mo. day yr.

Instructions for Form W-15, Cementing Report

NOTICE: The Form W-15 must be submitted as an attachment to a Form G-1 (Gas Well Back Pressure Test, Completion or Recompletion Report, and Log), Form W-2 (Oil Well Potential Test, Completion or Recompletion Report, and Log), Form W-3 (Plugging Record), or Form W-4 (Application for Multiple Completion), any time cement is pumped in a wellbore.

- What to file:** An operator should file an original and one copy of the completed Form W-15 for each cementing company used on a well. The cementing of different casing strings on a well by one cementing company may be reported on one form.
The Form W-15 should be filed with the Form W-3, Plugging Record, unless the Form W-3 is signed by the cementing company representative. When reporting dry holes, operators must complete Form W-15, in addition to Form W-3, to show any casing cemented in the hole.
- How to file:** An oil and gas completion report and Form W-15 may be filed online using the Commission's Online System (<https://webapps.rrc.state.tx.us/security/login.do>) or a paper copy of the form may be mailed to the Commission in Austin (P.O. Box 12967, Austin, Texas 78711-2967).
- Surface casing:** An operator must set and cement sufficient surface casing to protect all usable-quality water strata, as defined by the Groundwater Advisory Unit in Austin. Sufficient cement shall be used to fill the annular space outside the casing from the shoe to the ground surface or to the bottom of the cellar. Before drilling a well, an operator must obtain a letter from the Groundwater Advisory Unit stating the protection depth. Surface casing should not be set deeper than 200 feet below the specified depth without prior approval from the Commission.
To plug and abandon a well, operators must use only cementers approved by the Commission's Director of Field Operations in accordance with SWR 14 (http://info.sos.state.tx.us/pls/pub/readtacSext.TacPage?sl=R&app=9&p_dir=&p_rloc=&p_tloc=&p_ploc=&pg=1&p_tac=&ti=16&pt=1&ch=3&rl=14). Cementing companies, service companies, or operators can qualify as approved cementers by demonstrating that they are able to mix and pump cement in compliance with Commission rules and regulations.
- Estimated % wash-out:** If the estimated % wash-out is less than 20% (or 30% along the Gulf Coast), provide supporting documentation such as a caliper log to show how the estimated % wash-out was obtained.
- Multi-stage cement:** An operator must report the multi-stage cement shoe in II. Casing Cementing Data section by selecting the type of casing and Multi-stage cement shoe. The operator must report the multi-stage cement tool in III. Casing Cementing Data section by selecting the type of casing and Multi-stage cement/DV tool.
- Multiple parallel strings:** An operator should file the Form W-15 as an attachment to the Form W-4, Application for Multiple Completion. An operator may be required to submit multiple Form W-15s to show all data for multiple parallel strings.
- Slurry data:** If cement job exceeds three slurries, continue the list of slurries in the Slurry table in the subsequent Casing Cementing Data box.

CHRISTI CRADDICK, CHAIRMAN
RYAN SITTON, COMMISSIONER
WAYNE CHRISTIAN, COMMISSIONER



LORI WROTENBERY
DIRECTOR, OIL AND GAS DIVISION
BILL SPRAGGINS
DISTRICT DIRECTOR

RAILROAD COMMISSION OF TEXAS
OIL AND GAS DIVISION

OPERATOR Name: PT PETROLEUM, LLC

RE: Lease: UNIVERSITY ORANGE

Address1: 2701 DALLAS PARKWAY STE 580

Address2:

Well No: 1041A

City: PLANO

Sec: 4 **Block:** 1

State: TX

County: REAGAN

Survey Name: UL

SWR13EX Application Number: 14672

Drilling Permit No: 825451

SWR 13 CASING EXCEPTION APPLICATION/ALTERNATIVE REQUEST APPROVED

The Proposed Casing and Cementing Program submitted for the **LEASE NAME:** UNIVERSITY ORANGE ;
WELL NUMBER: 1041A has been approved by the Railroad Commission of Texas District Office.

- a. A copy of this approved letter must be kept on location during all phases of drilling and/or plugging operations. Once approved, changes CANNOT be made to the Proposed Casing Program on the original application without additional approval from the Railroad Commission of Texas District Office.
- b. Any substantive modifications to the cement program require prior approval from the Railroad Commission of Texas District Office, and may require re-submission of the SWR 13 (Statewide Rule 13) Alternate Surface Casing Application. Contact the Railroad Commission of Texas District Office for more information.
- c. The tail slurry must be sufficient to fill the Zone of Critical Cement as described in Statewide Rule 13(b)(1)(H)(i). In addition, all cement slurries must be mixed on location as described in Application for Alternate Surface Casing Program.
- d. The casing and cement program shall adhere to the following specifications:
Set 1300 feet of surface casing and circulate cement from the shoe to the ground surface.

IF CEMENT IS NOT CIRCULATED TO THE GROUND SURFACE AS REQUIRED BY THIS EXCEPTION, YOU MUST CONTACT THE RAILROAD COMMISSION OF TEXAS DISTRICT OFFICE IMMEDIATELY AND FOLLOW THE PROCEDURES SET OUT IN RULE 13(b)(1)(H)(iii) OR AS REQUIRED BY THE RAILROAD COMMISSION OF TEXAS DISTRICT OFFICE.

You must comply with all other provisions of SWR 13 (Statewide Rule 13) and a representative of the cementing company who performs the cementing job for the protection of usable quality water strata must sign the Form W-15 attesting to the information regarding cementing operations performed; including circulation of cement. (Note: If surface casing is set below the approved depth, this can result in denial of future Statewide Rule 13(b)(1)(H)(i) requests.) A condition of the approved drilling permit requires notification to the Railroad Commission of Texas District Office eight (8) hours prior to the time casing is to be set/cemented in the well. If your exception request was submitted after the subject well has been drilled and completed, the operator may be referred for enforcement action.

This authorization shall expire within five (5) years from the date the Groundwater Protection Determination was issued, or at the expiration of the drilling permit (if the well is not spudded prior to expiration) for the referenced well, whichever occurs first. Furthermore, this authorization supersedes any prior authorizations issued for the referenced well.

This exception is based on information provided when the application was submitted on 05/01/2017
If any information has changed, you must contact the appropriate Railroad Commission of Texas District Office, and submit a new application if applicable. If you have questions, please contact the appropriate Oil and Gas District office.

RRC APPROVAL BY: Bill Spraggins

DATE: 05/02/2017

BILL SPRAGGINS

DISTRICT DIRECTOR

Tracking No.: 183941

This facsimile L-1 was generated electronically from data submitted to the RRC.

Instructions

When to File Form L-1:

- with Forms G-1, W-2, and GT-1 for new and deepened gas, oil, and geothermal wells
- with Form W-3 for plugged dry holes
- when sending in a log which was held under a request for confidentiality and the period for confidentiality has not yet expired.

When is Form L-1 NOT required:

- with Forms W-2, G-1, and GT-1 filed for injection wells, disposal wells, water supply wells, service wells, re-test wells, re-classifications, and plugbacks of oil, gas or geothermal wells
- with Form W-3 for plugging of other than a dry hole

Where to File Form L-1:

- with the appropriate Commission district office

Filling out Form L-1:

- Section I and the signature section must be filled out for all wells
- complete only the appropriate part of Section II

Type of log required:

- any wireline survey run for the purpose of obtaining lithology, porosity, or resistivity information
- no more than one such log is required but it must be of the subject well
- if such log is NOT run on the subject well, do NOT substitute any other type of log; just select Section II, Part A below

SECTION I. IDENTIFICATION

Operator Name: PT PETROLEUM, LLC	District No. 7C	Completion Date: 08/15/2017
Field Name SPRABERRY (TREND AREA)	Drilling Permit No. 825451	
Lease Name UNIVERSITY ORANGE	Lease/ID No. 19444	Well No. 1041A
County REAGAN	API No. 42- 383-39858	

SECTION II. LOG STATUS (Complete either A or B)

☐ A. BASIC ELECTRIC LOG NOT RUN

☒ B. BASIC ELECTRIC LOG RUN. (Select one)

- ☒ 1. Confidentiality is requested and a copy of the header for each log that has been run on the well is attached.
- ☐ 2. Confidentiality already granted on basic electric log covering this interval (applicable to deepened wells only).
- ☐ 3. Basic electric log covering this interval already on file with Commission (applicable to deepened wells only).
- ☐ 4. Log attached to (select one):

☐ (a) Form L-1 (this form). If the company/lease name on log is different from that shown in Section I, please enter name on log here: _____

Check here if attached log is being submitted after being held confidential. ☐

☐ (b) Form P-7, Application for Discovery Allowable and New Field Designation.

☐ (c) Form W-4, Application for Multiple Completion:

Lease or ID No(s). _____

Well No(s). _____

Ann Ritchie

Signature

Name (print)

Title

(432) 684-6381

Phone

12/06/2017

Date

-FOR RAILROAD COMMISSION USE ONLY-



Weatherford®

Surface Logging Systems

10000 Pilot/P.O. Box 80531
Midland, TX/Midland, TX
79706/79708
432.561.8892 Main
432.561.8895 Fax

COMPANY: PT PETROLEUM

WELL: UNIVERSITY ORANGE 1041A

FIELD: TRINITY

COUNTY: REAGAN STATE: TX

LOCATION: 100' FSL & 2319' FWL, SEC.4, BLK. 1

UNIVERSITY LANDS SURVEY

Spud Date: 5/28/17

Started: 6/2/17 At: 6764'

Ended: 6/9/17 At: 17660'

Api No.: 42-383-39858

G.L.: 2769'

K.B: 2794'

Logging Personnel:

SCOTT MILLIGAN

JARED BLAIR

Unit No.: 081

Rig: PRECISION 312

Filename: PT-PETROLEUM-UNIVERSITY-ORANGE-1041A.mlw

Geologist: GARY HAMPTON

Abbreviations:

NB...New Bit
CO...Circ Out
NR...No Returns
TG...Trip Gas
WOB...Wt on Bit
RPM...Rev/Min
SG...Survey Gas
DST...Drill Stem Test
DS...Directional Survey
CG...Connection gas
LAT...Logged After Trip
PP...Pump Pressure
SPM...Strokes/Min
DTG...Down Time Gas

Mud Data

WT...Weight V...Viscosity
PH...Acidity F...Filtrate
CHL...Chlorides SC...Solids Content

Lithology Symbols:

Anhydrite Salt Granite
Siltstone Chert Sandstone
Dolomite Conglomerate Limestone
Coal Shale Bentonite
Carb Shale Granite Wash Quartz Wash
Red Sh Org Sh Green Sh
Cust Sh1 Cust Sh2 Cust Sh3
Cust Sh4 Cust Sh5 Cust Sh6

Accessories

Glaucanite Pyrite Fossils Oolites
Fractures Cement

Gas Chromatograph Analysis:

TG -----
C1 -----
C2 -----
C3 -----
IC4 -----
NC4 -----
IC5 -----
NC5 -----

Drilling
Info

Drilling Rate
MIN/FT

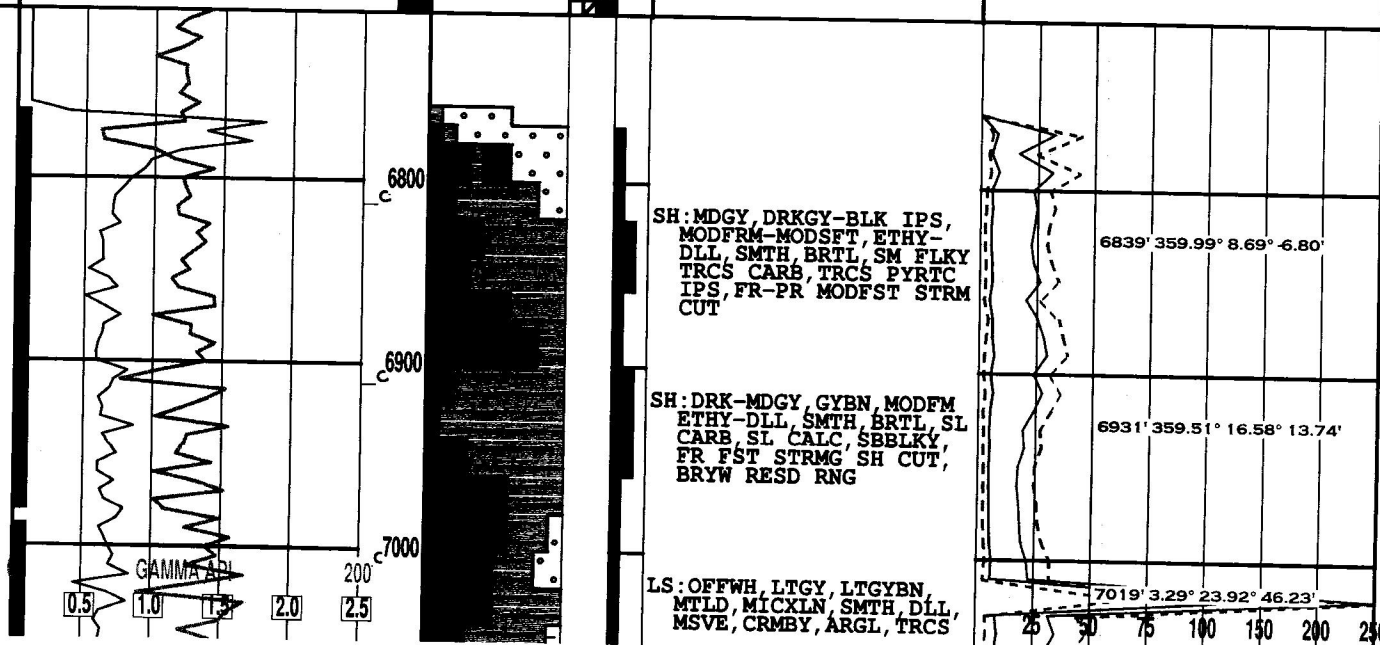
Vis
Por
Tr /
p /
f /
g

Lithology

%
Oil
Flu
Tr /
p /
f /
g

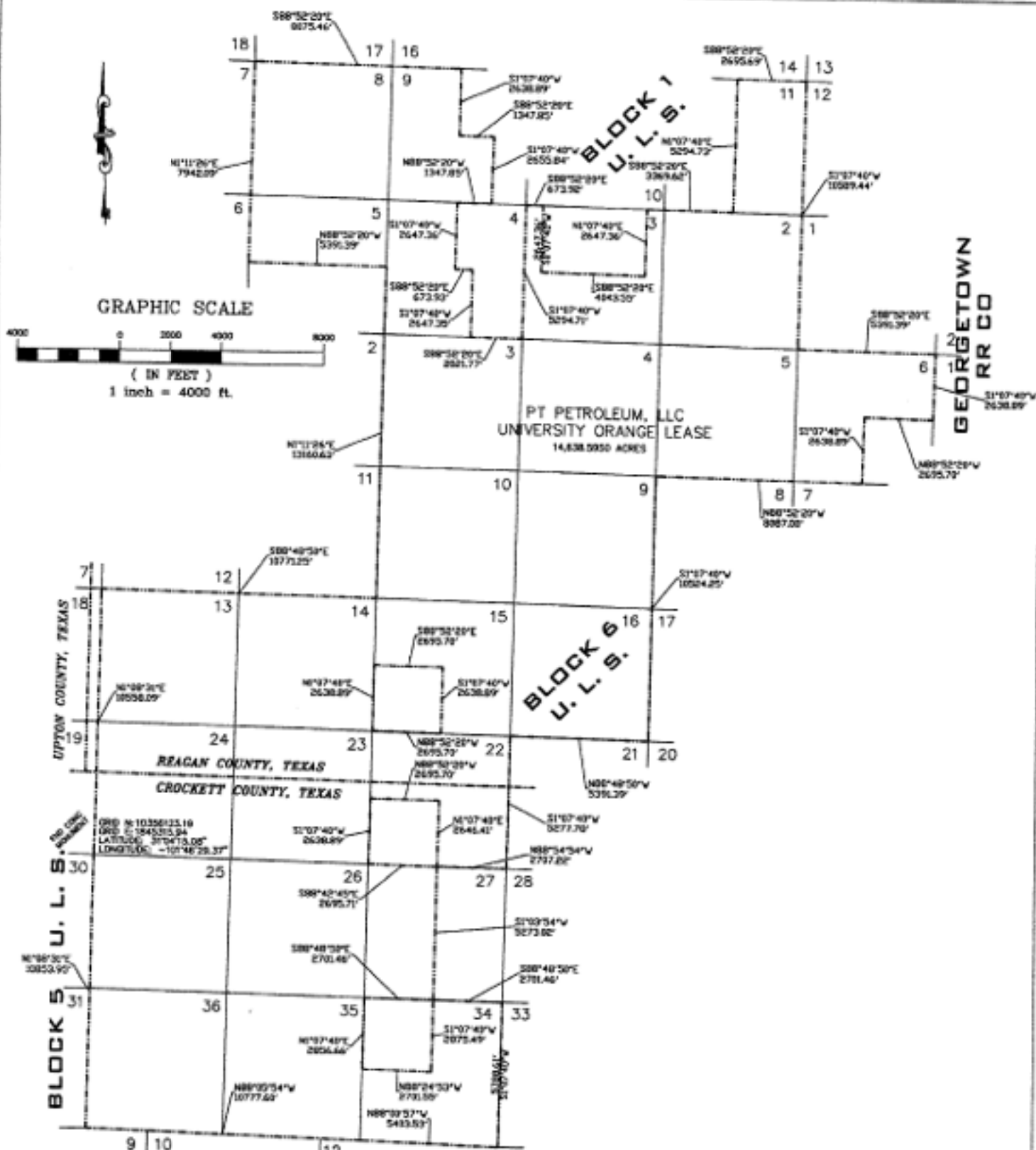
Descriptions/Remarks

Total Gas/Chromatograph



Address	City	State	Zip Code	Tel: Area Code	Number	Date: mo. day yr.
---------	------	-------	----------	----------------	--------	-------------------

SECTION VII. REMARKS



LOCATION PLAT

PT PETROLEUM, LLC
UNIVERSITY ORANGE LEASE
14,638.5950 ACRES OF LAND OUT OF
BLOCK 1 & BLOCK 6,
UNIVERSITY LANDS SURVEY,
REAGAN & CROCKETT COUNTIES, TEXAS

QUAD: RANKIN NE
SCALE: 1" = 4000'
PROJECT: 74957PT
JOB NO. 74,957-00

GROUNDWATER PROTECTION DETERMINATION

Form GW-2



Groundwater Advisory Unit

Date Issued: 19 April 2017**GAU Number:** 170616**Attention:** PT PETROLEUM, LLC
2701 DALLAS PARKWAY STE
PLANO, TX 75093**Operator No.:** 682074**API Number:**
County: REAGAN
Lease Name: University Orange
Lease Number:
Well Number: 1041A
Total Vertical Depth: 12000
Latitude: 31.128751
Longitude: -101.731963
Datum: NAD27**Purpose:** New Drill**Location:** Survey-UL; Block-1; Section-4

To protect usable-quality groundwater at this location, the Groundwater Advisory Unit of the Railroad Commission of Texas recommends:

The interval from the land surface to 20 feet below the base of the Cretaceous-age beds must be protected. The base of the Cretaceous is estimated to occur at a depth between 700 and 750 feet.

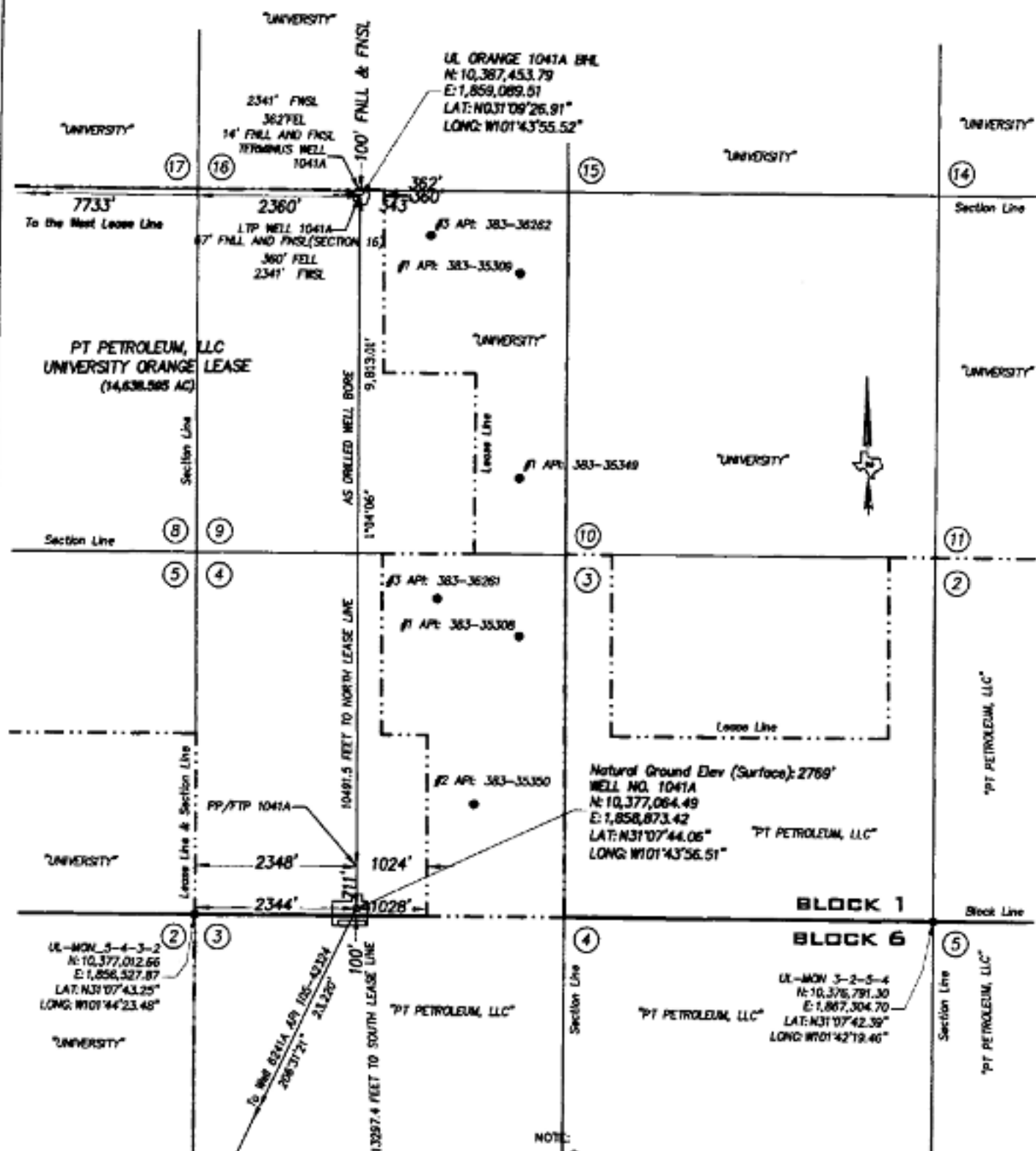
This recommendation is applicable to all wells within a radius of 650 feet of this location.

Note: Unless stated otherwise, this recommendation is intended to apply only to the subject well and not for area-wide use. This recommendation is for normal drilling, production, and plugging operations only. It does not apply to saltwater disposal operation into a nonproductive zone (RRC Form W-14).

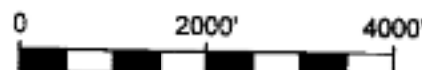
This determination is based on information provided when the application was submitted on 04/17/2017. If the location information has changed, you must contact the Groundwater Advisory Unit, and submit a new application if necessary. If you have questions, please contact us at 512-463-2741 or gau@rrc.texas.gov.

Groundwater Advisory Unit, Oil and Gas Division

Form GW-2 P.O. Box 12967 Austin, Texas 78771-2967 512-463-2741 Internet address: www.rrc.texas.gov
Rev. 02/2014



GRAPHIC SCALE

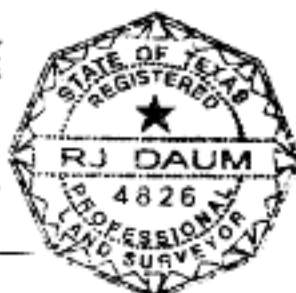


(IN FEET)
1 inch = 2000 ft.

THE UNDERSIGNED DOES HEREBY CERTIFY THAT THIS LOCATION WAS THIS DAY MADE ON THE GROUND BY ME OR UNDER MY SUPERVISION AND THAT THIS PLAT IS A CORRECT REPRESENTATION THEREOF.

DATED THIS 21ST DAY OF NOVEMBER, 2017

RJ DAUM
TEXAS RPLS 4826



SCHUMANN ENGINEERING CO., INC.

REGISTERED PROFESSIONAL LAND SURVEYORS

REGISTERED PROFESSIONAL CIVIL ENGINEERS

Civil Engineering ~ Land Surveying

TEXAS FIRM No. F1880

TEXAS FIRM No. 10149500

408 N. PECOS STREET - P. O. BOX 504
MIDLAND, TEXAS 79702-0504

Office (432) 684-5548
Fax (432) 684-6973

NOTE:

COURSES, DISTANCES AND COORDINATES SHOWN HEREON ARE LAMBERT GRID AND CONFORM TO THE "TEXAS COORDINATE SYSTEM", TEXAS CENTRAL ZONE, NORTH AMERICAN DATUM OF 1983. ALL DISTANCES AND COORDINATES ARE SHOWN IN GRID FEET.

ELEVATION IS NAVD 88.

THIS WELL IS TO BE LOCATED 14.1 MILES IN A SOUTHEAST DIRECTION FROM RANCHO WHICH IS THE NEAREST TOWN IN THE COUNTY OF THE WELL SITE.

LOCATION PLAT

PT PETROLEUM LLC
AS DRILLED
WELL NO. 1041A
UNIVERSITY ORANGE LEASE
SURFACE LOCATION:
100 FEET FROM THE SOUTH LINE AND
2344 FEET FROM THE WEST LINE
SECTION 4, BLOCK 1
UNIVERSITY LAND SURVEY
BOTTOM HOLE LOCATION:
100 FEET FROM THE NORTH LINE AND
2360 FEET FROM THE WEST LINE
SECTION 9, BLOCK 1
UNIVERSITY LAND SURVEY
REAGAN COUNTY, TEXAS

QUAD: TEXON
SCALE: 1" = 2000'

PROJECT: 75874PTP
JOB NO: 75,874-A