

**RAILROAD COMMISSION OF TEXAS**

1701 N. Congress
P.O. Box 12967
Austin, Texas 78701-2967

Form W-2

Status: Work in Progress
Date:
Tracking No.: 131164

OIL WELL POTENTIAL TEST, COMPLETION OR RECOMPLETION REPORT, AND LOG**OPERATOR INFORMATION**

Operator Name: DEVON ENERGY PRODUCTION CO, L.P. Operator No.: 216378
Operator Address: ATTN VICTORIA SANCHEZ 333 WEST SHERIDAN AVE OKLAHOMA CITY, OK 73102-5010

WELL INFORMATION

API No.: 42-383-39278 County: REAGAN
Well No.: 1H RRC District No.: 7C
Lease Name: UNIVERSITY 48-12 WEST Field Name: LIN (WOLFCAMP)
RRC Lease No.: Field No.: 53613750
Location: Section: 12, Block: 48, Survey: UL, Abstract: U324

Latitude: 31.11066 Longitude: -101.32973
This well is located 9.6 miles in a SE
direction from BIG LAKE,
which is the nearest town in the county.

FILING INFORMATION

Purpose of filing: Initial Potential
Type of completion: New Well
Well Type: Producing Completion or Recompletion Date: 01/13/2015

Type of Permit	Date	Permit No.
Permit to Drill, Plug Back, or Deepen	12/02/2014	800105
Rule 37 Exception		
Fluid Injection Permit		
O&G Waste Disposal Permit		
Other:		

COMPLETION INFORMATION

Spud date: 12/30/2014	Date of first production after rig released: 01/13/2015
Date plug back, deepening, recompletion, or drilling operation commenced: 12/30/2014	Date plug back, deepening, recompletion, or drilling operation ended: 01/13/2015
Number of producing wells on this lease in this field (reservoir) including this well: 1	Distance to nearest well in lease & reservoir (ft.): 0.0
Total number of acres in lease: 449.96	Elevation (ft.): 2695 GL
Total depth TVD (ft.): 6946	Total depth MD (ft.): 14290
Plug back depth TVD (ft.): 6946	Plug back depth MD (ft.): 14239
Was directional survey made other than inclination (Form W-12)? Yes	Rotation time within surface casing (hours): 43.0
Recompletion or reclass? No	Is Cementing Affidavit (Form W-15) attached? Yes
Type(s) of electric or other log(s) run: None	Multiple completion? No
Electric Log Other Description:	
Location of well, relative to nearest lease boundaries of lease on which this well is located:	Off Lease : No
200.0 Feet from the South Line and	
499.0 Feet from the East Line of the	
	UNIVERSITY 48-12 WEST Lease.

FORMER FIELD (WITH RESERVOIR) & GAS ID OR OIL LEASE NO.

Field & Reservoir	Gas ID or Oil Lease No.	Well No.	Prior Service Type
-------------------	-------------------------	----------	--------------------

PACKET: N/A

W2: N/A

FOR NEW DRILL OR RE-ENTRY, SURFACE CASING DEPTH DETERMINED BY:

GAU Groundwater Protection Determination

Depth (ft.): 850.0

Date: 12/05/2014

SWR 13 Exception

Depth (ft.):

INITIAL POTENTIAL TEST DATA FOR NEW COMPLETION OR RECOMPLETION

Date of test: 02/13/2015

Production method: Gas Lift

Number of hours tested: 24

Choke size: 64

Was swab used during this test? No

Oil produced prior to test: 3800.96

PRODUCTION DURING TEST PERIOD:

Oil (BBLs): 373.00

Gas (MCF): 243

Gas - Oil Ratio: 651

Flowing Tubing Pressure: 125.00

Water (BBLs): 861

CALCULATED 24-HOUR RATE

Oil (BBLs): 373.0

Gas (MCF): 243

Oil Gravity - API - 60.: 37.8

Casing Pressure: 980.00

Water (BBLs): 861

CASING RECORD

Row	Type of Casing	Casing Size (in.)	Hole Size (in.)	Setting Depth (ft.)	Multi - Stage Depth (ft.)	Multi - Shoe Depth (ft.)	Cement Class	Cement Amount (sacks)	Slurry Volume (cu. ft.)	Top of Cement (ft.)	TOC Determined By
1	Surface	9 5/8	12 1/4	1010			C	460	805.0	0	Circulated to Surface
2	Conventional Production	5 1/2	8 3/4	14290			H	2550	4149.0	0	Circulated to Surface

LINER RECORD

Row	Liner Size (in.)	Hole Size (in.)	Liner Top (ft.)	Liner Bottom (ft.)	Cement Class	Cement Amount (sacks)	Slurry Volume (cu. ft.)	Top of Cement (ft.)	TOC Determined By
-----	------------------	-----------------	-----------------	--------------------	--------------	-----------------------	-------------------------	---------------------	-------------------

N/A

TUBING RECORD

Row	Size (in.)	Depth (ft.)	Packer Depth (ft.)/Type
1	2 7/8	7042	/

PRODUCING/INJECTION/DISPOSAL INTERVAL

Row	Open hole?	From (ft.)	To (ft.)
1	No	L1 7129	14290.0

ACID, FRACTURE, CEMENT SQUEEZE, CAST IRON BRIDGE PLUG, RETAINER, ETC.

Was hydraulic fracturing treatment performed? Yes

Is well equipped with a downhole actuation sleeve? Yes

If yes, actuation pressure (PSIG): 6200.0

Production casing test pressure (PSIG) prior to hydraulic fracturing treatment: 7400

Actual maximum pressure (PSIG) during hydraulic fracturing: 7480

Has the hydraulic fracturing fluid disclosure been reported to FracFocus disclosure registry (SWR29)? Yes

Row	Type of Operation	Amount and Kind of Material Used	Depth Interval (ft.)
1	Fracture	111,655 BBLs TOTAL FLUID; 5,429,660 # TOTAL PROPPANT	7129 14290

FORMATION RECORD

<u>Formations</u>	<u>Encountered</u>	<u>Depth TVD (ft.)</u>	<u>Depth MD (ft.)</u>	<u>Is formation isolated?</u>	<u>Remarks</u>
GRAYBURG	Yes	2750.0	2750.0	Yes	ESTIMATED
QUEEN	Yes	2570.0	2570.0	Yes	ESTIMATED
SAN ANDRES - SALTWATER FLOW, POSSIBLY HEAVY	Yes	3285.0	3285.0	Yes	ESTIMATED
CLEARFORK	Yes	5000.0	5000.0	Yes	ESTIMATED
SPRABERRY	Yes	5547.0	5548.0	Yes	ACTUAL
DEAN	Yes	6350.0	6352.0	Yes	ACTUAL
WOLFCAMP	Yes	6477.0	6486.0	Yes	ACTUAL
STRAWN	No			No	NOT ENCOUNTERED
FUSSELMAN	No			No	NOT ENCOUNTERED
ELLENBURGER	No			No	NOT ENCOUNTERED

Do the producing interval of this well produce H2S with a concentration in excess of 100 ppm (SWR 36)?

No

Is the completion being downhole commingled (SWR 10)?

No

REMARKS

ACREAGE HAS CHANGED FROM 503.55 TO 449.960
KOP @ 6217 FEET

RRC REMARKS

PUBLIC COMMENTS:

CASING RECORD :

TUBING RECORD:

PRODUCING/INJECTION/DISPOSAL INTERVAL :

ACID, FRACTURE, CEMENT SQUEEZE, CAST IRON BRIDGE PLUG, RETAINER, ETC. :

POTENTIAL TEST DATA:

OPERATOR'S CERTIFICATION

Printed Name: Amy Cunningham

Title: Regulatory Analyst

Telephone No.: (405) 552-6137

Date Certified: 03/31/2015

Cementer: Fill in shaded areas.
Operator: Fill in other items.

RAILROAD COMMISSION OF TEXAS
Oil and Gas Division

Form W-15
Cementing Report
Rev. 4/1/83
483-045

1. Operator's Name (As shown on Form P-5, Organization Report) DEVON ENERGY PRODUCTION	2. RRC Operator No. 216378	3. RRC District No. 7C	4. County of Well Site REAGAN
5. Field Name (Wildcat or exactly as shown on RRC Records) Lin (Wolfcamp)		6. API No. 42-383-39278	7. Drilling Permit No. 800105
8. Lease Name UNIVERSITY 48-12 WEST	9. Rule 37 Case No.	10. Oil Lease/Gas ID No.	11. WELL NUMBER 1H

CASING CEMENTING DATA:		SURFACE CASING	INTER-MEDIATE CASING	PRODUCTION CASING		MULTI-STAGE CEMENTING PROCESS	
				Single String	Multiple Parallel Strings	Tool	Shoe
12. Cementing Date		01/02/15					
13. • Drilled Hole Size		12 1/4					
• Est. % wash or hole enlargement							
14. Size of casing (in. O.D.)		9 5/8					
15. Top of liner (ft.)							
16. Setting depth (ft.)		1010					
17. Number of centralizers used		8					
18. Hrs. Waiting on cement before drill-out		8+					
1 st Slurry	19. API cement used: No. of sacks ▶	460					
	Class ▶	'C'					
	Additives ▶	#22					
2 nd Slurry	No. of sacks ▶						
	Class ▶						
	Additives ▶						
3 rd Slurry	No. of sacks ▶						
	Class ▶						
	Additives ▶						
1 st	20. Slurry pumped: Volume (cu. ft.) ▶	805					
	Height (ft.) ▶	2570					
2 nd	Volume (cu. ft.) ▶						
	Height (ft.) ▶						
3 rd	Volume (cu. ft.) ▶						
	Height (ft.) ▶						
Total	Volume (cu. ft.) ▶	805					
	Height (ft.) ▶	2570					
21. Was cement circulated to ground surface (or bottom of cellar) outside casing ?		YES					
REMARKS. 1 ST SLURRY: C+ 4% GEL+2% CACL2+ 0.125 PPS CELLOFLAKE+ 0.01PPS STATIC FREE. CIRCULATED 50 BBLS @ 13.5 PPG (160 SACKS) BACK TO SURFACE							

CEMENTING TO PLUG AND ABANDON	PLUG #1	PLUG #2	PLUG #3	PLUG #4	PLUG #5	PLUG #6	PLUG #7	PLUG #8
23. Cementing date								
24. Size of hole or pipe plugged (in.)								
25. Depth to bottom of tubing or drill pipe (ft.)								
26. Sacks of cement used (each plug)								
27. Slurry volume pumped (cu. ft.)								
28. Calculated top of plug (ft.)								
29. Measured top of plug, if tagged (ft.)								
30. Slurry wt. (lb/gal)								
31. Type cement								

CEMENTER'S CERTIFICATE: I declare under penalties in Sec. 91.143, Texas Natural Resources Code, that I am authorized to make this Certification, that the cementing of casing and/or the placing of cement plugs in this well as shown in the report was performed by me or under my Supervision, and that the cementing data and facts presented on both sides of this form are true, correct, and complete, to the best of my knowledge. This certification covers cementing data only.

Jesus A. Esparza, Service Supervisor

Name and title of cementer's representative

Baker Hughes Oilfield Operations Inc.

Cementing Company

Signature

P.O. Box 1135

Address

Eldorado

City,

Texas

State,

76936

Zip Code

(325) 853-2553

Tel.: Area Code Number

01/02/15

Date: mo. day yr.

OPERATOR'S CERTIFICATE: I declare under penalties prescribed in Sec. 91.143, Texas Natural Resources Code, that I am authorized to make this certification, that I have knowledge of the well data and information presented in this report, and that data and facts presented on both sides of this form Are true, correct, and complete, to the best of my knowledge. This certification covers all well data.

Amy Cunningham

Typed or printed name of operator's representative

Regulatory Professional

Title

Amy Cunningham

Signature

333 W Sheridan Ave.

Address

OKC

City,

OK

State,

73102

Zip Code

405-552-6137

Tel.: Area Code Number

8/24/15

Date: mo. day yr.

Instructions to Form W-15, Cementing Report

IMPORTANT: Operators and cementing companies must comply with the requirements of the Commission's Statewide Rules 8 (Water Protection), 13 (Casing, Cementing, Drilling, and Completion), and 14 (Well Plugging). For offshore operations, see the requirements of Rule 13 (c).

A. What to file. An operator should file an original and one copy of the completed Form W-15 for each cementing company used on a well. The cementing of different casing strings on a well by one cementing company may be reported on one form. Form W-15 should be filed with the following.

- An initial oil or gas completion report, Form W-2 or G-1, as required by Statewide or special field rates;
- Form W-4, Application for Multiple Completion, if the well is a multiple parallel casing completion; and
- Form W-3, Plugging Record, unless the W-3 is signed by the cementing company representative. When reporting dry holes, operators must complete Form W-15, in addition to Form W-3, to show any casing cemented in the hole.

B. Where to file. The appropriate Commission District Office for the county in which the well is located.

C. Surface Casing. An operator must set and cement sufficient surface casing to protect all usable-quality water strata, as defined by the Texas Department of Water Resources, Austin. Before drilling a well in any field or area in which no field rules are in effect or in which surface casing requirements are not specified in the applicable rules, an operator must obtain a letter from the Department of Water Resources stating the protection depth. Surface casing should not be set deeper than 200 feet below the specified depth without prior approval from the Committee.

D. Centralizers. Surface Casing must be centralized at the shoe, above and below a stage collar or diverting tool, if run, and through usable-quality water zones. In Non-deviated holes, a centralizer must be placed every fourth joint from the cement shoe to the ground surface or to the bottom of the cellar. All centralizers must meet API specifications.

E. Exceptions and alternative casing programs. The District Director may grant an exception to the requirements of Statewide Rule 13. In a written application, an operator must state the reason for the requested exception and outline an alternate program for casing and cementing through the protection depth for strata containing usable-quality water. The District Director may approve, modify, or reject a proposed program. An operator must obtain approval of any exception before beginning casing and cementing operations.

F. Intermediate and production casing. For specific technical requirements, operators should consult Statewide Rule 13 (3) and (4).

G. Plugging and abandoning. Cement plugs must be placed in the wellbore as required by Statewide Rule 14. The District Director may require additional cement plugs. For onshore or inland wells, a 10-foot cement plug must be placed in the top of the well, and the casing must be cut off three foot below the ground surface. All cement plugs, except the top plug, must have sufficient slurry volume to fill 100 feet of hole, plus ten percent for each 1,000 feet of depth from the ground surface to the bottom of the plug

To plug and abandon a well, operators must use only cementers approved by the Director of Field Operations, Cementing companies, service companies or operators can qualify as approved cementers by demonstrating that they are able to mix and pump cement in compliance with Commission rules and regulations.

Cementer: Fill in shaded areas.
Operator: Fill in other items.

RAILROAD COMMISSION OF TEXAS
Oil and Gas Division

Form W-15
Cementing Report
Rev. 4/1/83
483-045

1. Operator's Name (As shown on Form P-5, Organization Report) DEVON ENERGY PROD.	2. RRC Operator No. 214378	3. RRC District No. 7C	4. County of Well Site REAGAN
5. Field Name (Wildcat or exactly as shown on RRC Records) Lin (Wolfcamp)		6. API No. 42-383-39278	7. Drilling Permit No. 800105
8. Lease Name UNIVERSITY 48-12 WEST	9. Rule 37 Case No.	10. Oil Lease/Gas ID No.	11. Well No. 1H

CASING CEMENTING DATA:		SURFACE CASING	INTER-MEDIATE CASING	PRODUCTION CASING		MULTI-STAGE CEMENTING PROCESS	
				Single String	Multiple Parallel Strings	Tool	Shoe
12. Cementing Date				1/12/15			
13. • Drilled Hole Size				8 3/4			
• Est. % wash or hole enlargement							
14. Size of casing (in. O.D.)				5 1/2			
15. Top of liner (ft.)							
16. Setting depth (ft.)				14290			
17. Number of centralizers used				220			
18. Hrs. Waiting on cement before drill-out				8+			
1 st Slurry	19. API cement used: No. of sacks ▶			790			
	Class ▶			"H"			
	Additives ▶			#22			
2 nd Slurry	No. of sacks ▶			1760			
	Class ▶			"H"			
	Additives ▶			#22			
3 rd Slurry	No. of sacks ▶						
	Class ▶						
	Additives ▶						
1st	20. Slurry pumped: Volume (cu. ft.) ▶			1896			
	Height (ft.) ▶			7506			
2nd	Volume (cu. ft.) ▶			2253			
	Height (ft.) ▶			8920			
3rd	Volume (cu. ft.) ▶						
	Height (ft.) ▶						
Total	Volume (cu. ft.) ▶			4149			
	Height (ft.) ▶			16426			
21. Was cement circulated to ground surface (or bottom of cellar) outside casing ?				YES			
Remar LEAD:H(50/50)POZ+.10%GEL+.8%FL-52+.8%ASA-301+.6%SMS+2%SALT+3PPS KOLSEAL+.25PPS CELLOFLAKE+.01%SF TAIL:H(50:50)POZ+.5%FL-52+.5%FL-25+.3%CD-32+.6%SMS+5%SALT+.01%SF CIRCULATED 74 BBLS, 173 SACKS TO SURFACE							

CEMENTING TO PLUG AND ABANDON	PLUG #1	PLUG #2	PLUG #3	PLUG #4	PLUG #5	PLUG #6	PLUG #7	PLUG #8
23. Cementing date								
24. Size of hole or pipe plugged (in.)								
25. Depth to bottom of tubing or drill pipe (ft.)								
26. Sacks of cement used (each plug)								
27. Slurry volume pumped (cu. ft.)								
28. Calculated top of plug (ft.)								
29. Measured top of plug, if tagged (ft.)								
30. Slurry wt. (lb/gal)								
31. Type cement								

CEMENTER'S CERTIFICATE: I declare under penalties in Sec. 91.143, Texas Natural Resources Code, that I am authorized to make this Certification, that the cementing of casing and/or the placing of cement plugs in this well as shown in the report was performed by me or under my Supervision, and that the cementing data and facts presented on both sides of this form are true, correct, and complete, to the best of my knowledge. This certification covers cementing data only.

LEVANDOWSKI, Service Supervisor

Name and title of cementer's representative

Baker Hughes Oilfield Operations Inc.

Cementing Company


Signature

P.O. Box 1135

Eldorado Texas 76936 (325) 853-2553 1-12-2015
Address City, State, Zip Code Tel.: Area Code Number Date: mo. day yr.

OPERATOR'S CERTIFICATE: I declare under penalties prescribed in Sec. 91.143, Texas Natural Resources Code, that I am authorized to make this certification, that I have knowledge of the well data and information presented in this report, and that data and facts presented on both sides of this form Are true, correct, and complete, to the best of my knowledge. This certification covers all well data.

Amy Cunningham
Typed or printed name of operator's representative

Regulatory Professional
Title

Amy Cunningham
Signature

333 W Sheridan Ave OK OK 73102 4055524137 3/24/15
Address City, State, Zip Code Tel.: Area Code Number Date: mo. day yr.

Instructions to Form W-15, Cementing Report

IMPORTANT: Operators and cementing companies must comply with the requirements of the Commission's Statewide Rules 8 (Water Protection), 13 (Casing, Cementing, Drilling, and Completion), and 14 (Well Plugging). For offshore operations, see the requirements of Rule 13 (c).

- A. What to file. An operator should file an original and one copy of the completed Form W-15 for each cementing company used on a well. The cementing of different casing strings on a well by one cementing company may be reported on one form. Form W-15 should be filed with the following.
- An initial oil or gas completion report, Form W-2 or G-1, as required by Statewide or special field rates;
 - Form W-4, Application for Multiple Completion, if the well is a multiple parallel casing completion; and
 - Form W-3, Plugging Record, unless the W-3 is signed by the cementing company representative. When reporting dry holes, operators must complete Form W-15, in addition to Form W-3, to show any casing cemented in the hole.
- B. Where to file. The appropriate Commission District Office for the county in which the well is located.
- C. Surface Casing. An operator must set and cement sufficient surface casing to protect all usable-quality water strata, as defined by the Texas Department of Water Resources, Austin. Before drilling a well in any field or area in which no field rules are in effect or in which surface casing requirements are not specified in the applicable rules, an operator must obtain a letter from the Department of Water Resources stating the protection depth. Surface casing should not be set deeper than 200 feet below the specified depth without prior approval from the Committee.
- D. Centralizers. Surface Casing must be centralized at the shoe, above and below a stage collar or diverting tool, if run, and through usable-quality water zones. In Non-deviated holes, a centralizer must be placed every fourth joint from the cement shoe to the ground surface or to the bottom of the cellar. All centralizers must meet API specifications.
- E. Exceptions and alternative casing programs. The District Director may grant an exception to the requirements of Statewide Rule 13. In a written application, an operator must state the reason for the requested exception and outline an alternate program for casing and cementing through the protection depth for strata containing usable-quality water. The District Director may approve, modify, or reject a proposed program. An operator must obtain approval of any exception before beginning casing and cementing operations.
- F. Intermediate and production casing. For specific technical requirements, operators should consult Statewide Rule 13 (3) and (4).
- G. Plugging and abandoning. Cement plugs must be placed in the wellbore as required by Statewide Rule 14. The District Director may require additional cement plugs. For onshore or inland wells, a 10-foot cement plug must be placed in the top of the well, and the casing must be cut off three foot below the ground surface. All cement plugs, except the top plug, must have sufficient slurry volume to fill 100 feet of hole, plus ten percent for each 1,000 feet of depth from the ground surface to the bottom of the plug.

To plug and abandon a well, operators must use only cementers approved by the Director of Field Operations, Cementing companies, service companies or operators can qualify as approved cementers by demonstrating that they are able to mix and pump cement in compliance with Commission rules and regulations.

RAILROAD COMMISSION OF TEXAS

Oil and Gas Division

ELECTRIC LOG
STATUS REPORT

FORM L-1

Tracking No.: 131164

This facsimile L-1 was generated electronically from data submitted to the RRC.

Instructions

When to File Form L-1:

- with Forms G-1, W-2, and GT-1 for new and deepened gas, oil, and geothermal wells
- with Form W-3 for plugged dry holes
- when sending in a log which was held under a request for confidentiality and the period for confidentiality has not yet expired.

When is Form L-1 NOT required:

- with Forms W-2, G-1, and GT-1 filed for injection wells, disposal wells, water supply wells, service wells, re-test wells, re-classifications, and plugbacks of oil, gas or geothermal wells
- with Form W-3 for plugging of other than a dry hole

Where to File Form L-1:

- with the appropriate Commission district office

Filling out Form L-1:

- Section I and the signature section must be filled out for all wells
- complete only the appropriate part of Section II

Type of log required:

- any wireline survey run for the purpose of obtaining lithology, porosity, or resistivity information
- no more than one such log is required but it must be of the subject well
- if such log is NOT run on the subject well, do NOT substitute any other type of log; just select Section II, Part A below

SECTION I. IDENTIFICATION

Operator Name: DEVON ENERGY PRODUCTION CO, L.P.	District No. 7C	Completion Date: 01/13/2015
Field Name LIN (WOLFCAMP)	Drilling Permit No. 800105	
Lease Name UNIVERSITY 48-12 WEST	Lease/ID No.	Well No. 1H
County REAGAN	API No. 42- 383-39278	

SECTION II. LOG STATUS (Complete either A or B)

☒ A. BASIC ELECTRIC LOG NOT RUN

☐ B. BASIC ELECTRIC LOG RUN. (Select one)

- ☐ 1. Confidentiality is requested and a copy of the header for each log that has been run on the well is attached.
- ☐ 2. Confidentiality already granted on basic electric log covering this interval (applicable to deepened wells only).
- ☐ 3. Basic electric log covering this interval already on file with Commission (applicable to deepened wells only).
- ☐ 4. Log attached to (select one):

☐ (a) Form L-1 (this form). If the company/lease name on log is different from that shown in Section I, please enter name on log here: _____

Check here if attached log is being submitted after being held confidential. ☐

☐ (b) Form P-7, Application for Discovery Allowable and New Field Designation.

☐ (c) Form W-4, Application for Multiple Completion:

Lease or ID No(s). _____

Well No(s). _____

Amy Cunningham

Signature

DEVON ENERGY PRODUCTION CO, L.P.

Name (print)

Regulatory Analyst

Title

(405) 552-6137

Phone

03/24/2015

Date

-FOR RAILROAD COMMISSION USE ONLY-

CERTIFICATE OF COMPLIANCE
AND TRANSPORTATION AUTHORITY

P-4

This facsimile P-4 was generated electronically from data submitted to the RRC.
A certification of the automated data is available in the RRC's Austin office.

Tracking No.: 131164

1. Field name exactly as shown on proration schedule LIN (WOLFCAMP)		2. Lease name as shown on proration schedule UNIVERSITY 48-12 WEST					
3. Current operator name exactly as shown on P-5 Organization Report DEVON ENERGY PRODUCTION CO, L.P.		4. Operator P-5 no. 216378	5. Oil Lse/Gas ID no	6. County REAGAN	7. RRC district 7C		
8. Operator address including city, state, and zip code ATTN VICTORIA SANCHEZ 333 WEST SHERIDAN AVE OKLAHOMA CITY, OK 73102-5010		9. Well no(s) (see instruction E) 1H			11. Effective Date 01/13/2015		
		10. Classification <input checked="" type="checkbox"/> Oil <input type="checkbox"/> Gas <input type="checkbox"/> Other (see instruction A)					
12. Purpose of Filing. (Complete section a or b below.) (See instructions B and G) a. Change of: <input type="checkbox"/> operator <input type="checkbox"/> oil or condensate gatherer <input type="checkbox"/> gas gatherer <input type="checkbox"/> gas purchaser <input type="checkbox"/> gas purchaser system code <input type="checkbox"/> field name from _____ <input type="checkbox"/> lease name from _____ -- OR -- b. New RRC Number for: <input checked="" type="checkbox"/> oil lease <input type="checkbox"/> gas well Due to: <input checked="" type="checkbox"/> new completion or recompletion <input type="checkbox"/> reclass oil to gas <input type="checkbox"/> reclass gas to oil <input type="checkbox"/> other well (specify) _____ <input type="checkbox"/> consolidation, unitization, or subdivision (oil lease only)							
13. Authorized GAS WELL GAS or CASINGHEAD GAS Gatherer(s) and/or Purchaser(s). (See instruction G).							
Gatherer	Purchaser	Name of GAS WELL GAS or CASINGHEAD GAS Gatherer(s) or Purchaser(s) As Indicated in Columns to the Left (Attach an additional sheet in same format if more space is needed)			Purchaser's RRC Assigned System Code	Percent of Take	Full-well stream
X		LUCID ENERGY WESTEX, LLC(511943)				100.0	
	X	DEVON GAS SERVICES, L.P.(216732)			0001	100.0	
14. Authorized OIL or CONDENSATE Gatherer(s). (See instruction G).							
Name of OIL or CONDENSATE Gatherer(s) - List Highest Volume Gatherer First (Attach an additional sheet in same format if more space is needed)						Percent of Take	
JP ENERGY PRODUCTS SUPPLY, LLC(447962)						100.0	
RRC USE ONLY: Reviewer's initials: _____ Approval date: _____							
15. PREVIOUS OPERATOR CERTIFICATION FOR CHANGE OF OPERATOR P-4 FILING. Being the PREVIOUS OPERATOR, I certify that operating responsibility for the well(s) designated in this filing, located on the subject lease has been transferred in its entirety to the above named Current Operator. I understand, as Previous Operator, that designation of the above named operator as Current Operator is not effective until this certificate is approved by the Commission.							
Name of Previous Operator _____ Name (print) _____ Title _____				Signature <input type="checkbox"/> Authorized Employee of previous operator <input type="checkbox"/> Authorized agent of previous operator (see instruction G) _____ Date _____ Phone with area code _____			
16. CURRENT OPERATOR CERTIFICATION. By signing this certificate as the Current Operator, I certify that all statements on this form are true and correct and I acknowledge responsibility for the regulatory compliance of the subject lease including plugging of well(s) pursuant to Rule 14. I further acknowledge that I assume responsibility for the physical operation, control, and proper plugging of each well designated in this filing. I also acknowledge that I will remain designated as the Current Operator until a new certificate designating a new Current Operator is approved by the Commission.							
DEVON ENERGY PRODUCTION CO, L.P. Name (print) Regulatory Analyst Title amy.cunningham@dvn.com E-mail Address (optional)				Amy Cunningham Signature <input checked="" type="checkbox"/> Authorized Employee of current operator <input type="checkbox"/> Authorized agent of current operator (see instruction G) 04/01/2015 Date (405) 552-6137 Phone with area code			

STATEMENT OF PRODUCTIVITY OF ACREAGE
ASSIGNED TO PRORATION UNITS

Form P-15

Tracking No.: 131164

This facsimile P-15 was generated electronically
from data submitted to the RRC.

The undersigned states that he is authorized to make this statement; that he has knowledge of the facts concerning the DEVON ENERGY PRODUCTION CO, L.P. ,

OPERATOR

UNIVERSITY 48-12 WEST

LEASE

No. 1H

WELL

; that such well is

completed in the LIN (WOLFCAMP) Field, REAGAN County,

Texas and that the acreage claimed, and assigned to such well for proration purposes as authorized by special rule and as shown on the attached certified plat embraces 300.0 acres which can reasonably be considered to be productive of hydrocarbons.

- CERTIFICATE

I declare under penalties prescribed in Sec. 91.143, Texas Natural Resources Code, that I am authorized to make this report, that this report was prepared by me or under my supervision and direction,

Date 04/01/2015 Signature Amy Cunningham

Telephone (405) 552-6137 Title Regulatory Analyst
AREA CODE

Devon Energy Production Co., L.P.

333 Sheridan Ave.
Oklahoma City, OK 73102-8260

P-15 Additional Acreage Assignment to the University 48-12 West #1H Lin (Wolfcamp) Field

SWR 86 Additional Acreage Assignment For Fields with a Density Rule of 40 Acres or Less	
Horizontal Drainhole Displacement, ft	Additional Acreage Allowed, acres
100 to 585	20
586 to 1,170	40
1,171 to 1,755	60
1,756 to 2,340	80
2,341 to 2,925	100
2,926 to 3,510	120
3,511 to 4,096	140
4,097 to 4,682	160
4,683 to 5,268	180
5,269 to 5,854	200
5,855 to 6,440	220
6,441 to 7,026	240
7,027 to 7,612	260
7,613 to 8,198	280
8,199 to 8,784	300
8,785 to 9,370	320
9,371 to 9,956	340
9,957 to 10,542	360
10,543 to 11,128	380
etc. - 585 ft increments	etc. - 20 acre increments

ACREAGE ASSIGNED TO WELL:

Acres Per Unit (Special Rules)	40.00
LENGTH OF HORIZONTAL DRAINHOLE	7,074'
(First Perf to Last Perf)	
Additional Acreage Allowed: (SWR 86)	260.00

TOTAL NUMBER OF ACRES:	300.00
-------------------------------	---------------



Prepared By:
Annette Raines
333 W. Sheridan Ave.
Oklahoma City, OK 73102-8260
(405)228-8217

Groundwater
Advisory Unit

GROUNDWATER PROTECTION DETERMINATION

Form GW-2

Date December 5, 2014

GAU File No.: 12141

***** EXPEDITED APPLICATION *****

API Number 38339278

Attention: ANNETTE RAINES

RRC Lease No. 000000

SC_216378_38339278_000000_12141.pdf

DEVON ENERGY PRODUCTION CO LP
333 W SHERIDAN AVE
OKLAHOMA CITY OK 73102

--Measured--

2254 ft FWL

2466 ft FNL

MRL:SECTION

P-5# 216378

Digital Map Location:

X-coord/Long 101.32973

Y-coord/Lat 31.11066

Datum 83 Zone

County REAGAN

Lease & Well No. UNIVERSITY 48-12 WEST #1H

Purpose ND

Location SUR-UL, BLK-48, SEC-12, --[TD=7300], [RRC 7C],


To protect usable-quality groundwater at this location, the Groundwater Advisory Unit of the Railroad Commission of Texas recommends:

The interval from the land surface to the base of the SANTA ROSA, which is estimated to occur at a depth of 850 feet, must be protected.

Note: Unless stated otherwise, this recommendation is intended to apply only to the subject well and not for area-wide use. This recommendation is intended for normal drilling, production, and plugging operations only. It does not apply to saltwater disposal operation into a nonproductive zone (RRC Form W-14).

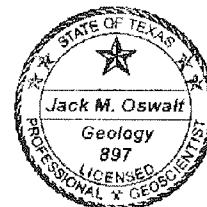
If you have any questions, please contact us at 512-463-2741, gau@rrc.state.tx.us, or by mail.

Sincerely,


Digitally signed by Jack Oswalt
DN: cn=US, st=TEXAS, l=Austin, o=Railroad
Commission of Texas, cn=Jack Oswalt,
email=jack.oswalt@rrc.state.tx.us
Date: 2014.12.05 13:59:15 -0600

Jack M. Oswalt, P.G.

GEOLOGIST SEAL



Geologist, Groundwater Advisory Unit
Oil & Gas Division

The seal appearing on this document was authorized by Jack M. Oswalt on 12/5/2014
Note: Alteration of this electronic document will invalidate the digital signature.

I hereby certify that this plat
is true and correct to the best
of my belief and knowledge

Amy Cunningham
Amy Cunningham



SECTION 3
BLOCK 48
UNIVERSITY LAND
SURVEY

SECTION 2
BLOCK 48
UNIVERSITY LAND
SURVEY

SECTION 8
BLOCK 48
UNIVERSITY LAND
SURVEY

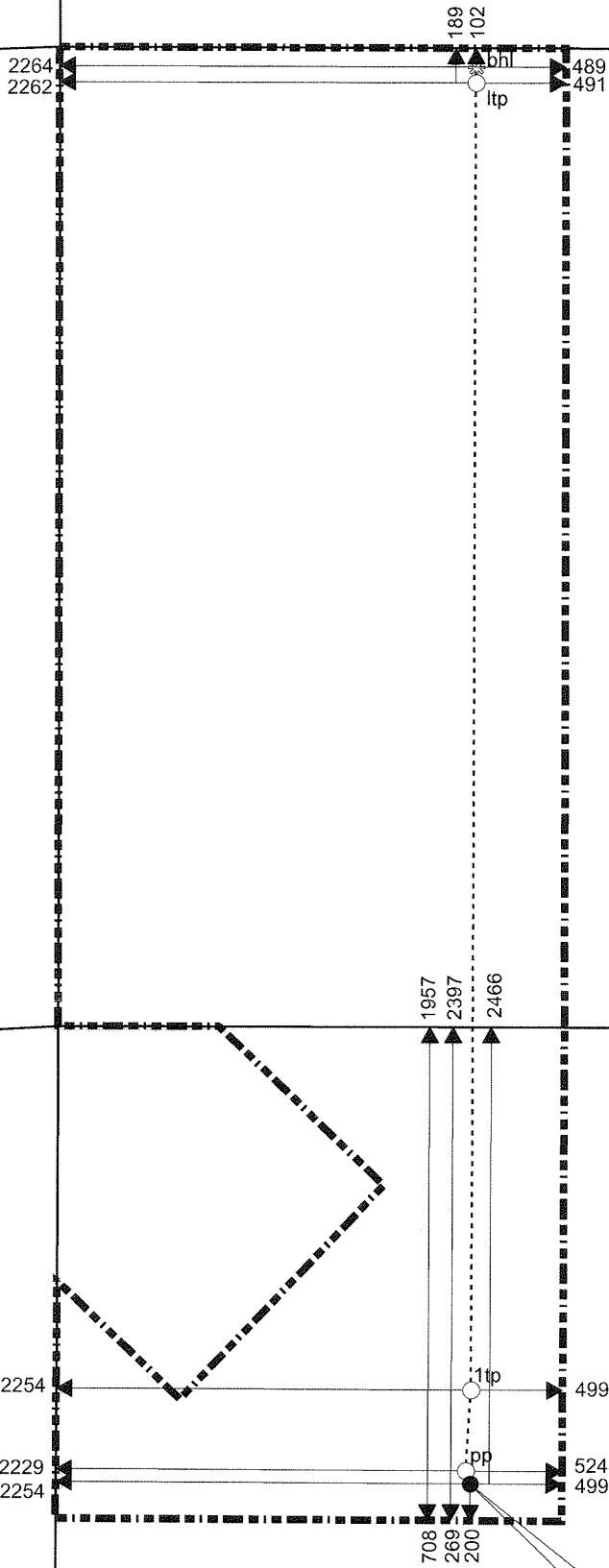
SECTION 9
BLOCK 48
UNIVERSITY LAND
SURVEY

SECTION 13
BLOCK 48
UNIVERSITY LAND
SURVEY

SECTION 12
BLOCK 48
UNIVERSITY LAND
SURVEY

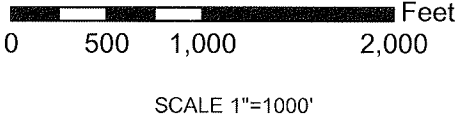
Legend

- 1H SHL
- 1H PP
- 1H 1TP
- 1H LTP
- ⊗ 1H BHL
- 1H WELLPATH
- ▶ 1H DIMS
- Survey_Lines
- - - - - Lease_Boundary



Well Location is 9.60 miles SE of the Courthouse in Big Lake, Reagan County, Texas.

Total Depth: 6946' (Elev 2695)
Surface Hole Location:
2466' FNL & 2254' FWL of the University Land Survey
200' FSL & 499' FEL of the lease.
Penetration Point:
2397' FNL & 2229' FWL of the University Land Survey
269' FSL & 524' FEL of the lease.
First Take Point:
1957' FNL & 2254' FWL of the University Land Survey
708' FSL & 499' FEL of the lease.
Last Take Point:
189' FNL & 2262' FWL of the University Land Survey
189' FNL & 491' FEL of the lease.
Bottom Hole location:
102' FNL & 2264' FWL of the University Land Survey
102' FNL & 489' FEL of the lease.



Devon Energy Production Company L.P.
333 W Sheridan - Oklahoma City 73102

University 48-12 West #1H
449.960 Acres in Lease
Lin (Wolfcamp) Field
University Land Survey
Reagan County, Texas

DATE: 03/31/2015
by AC