

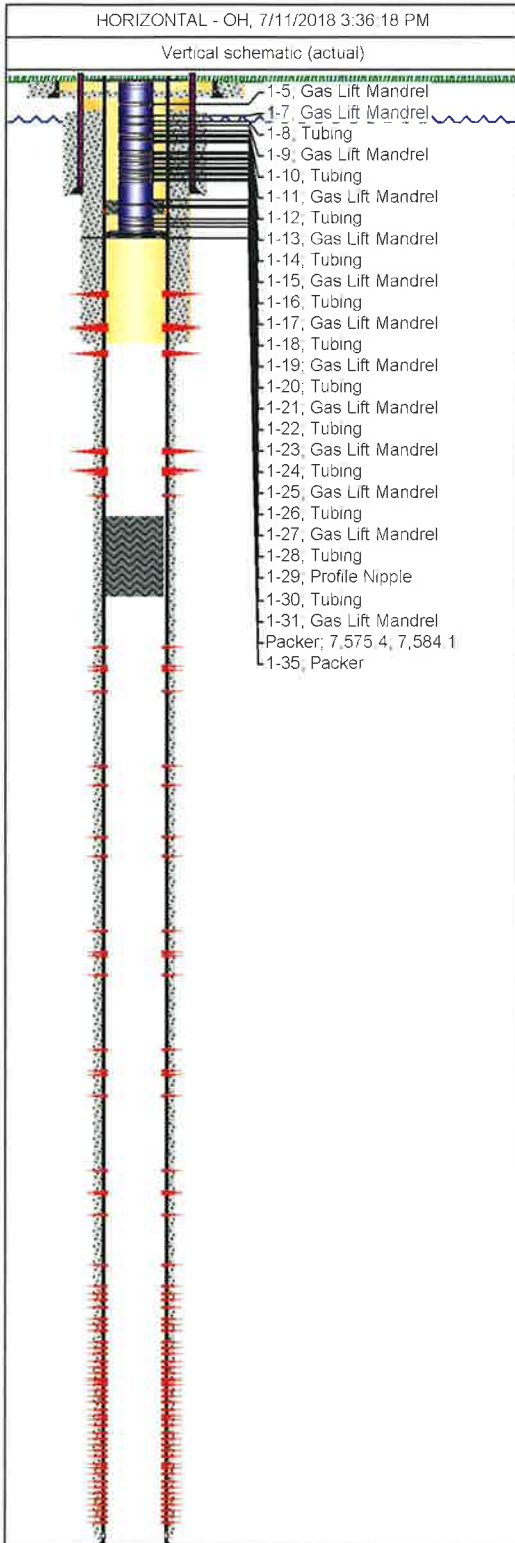
Downhole Well Profile

Well Name: UNIVERSITY 10 2704H

API/UWI 4238338226	Surface Legal Location S 27, BLK 10, ULS	Field Name LIN (WOLFCAMP)	Lease Number 756398	State/Province Texas	Well Configuration Type HORIZONTAL
Original KB Elevation (ft) 2,746.00	KB-Ground Distance (ft) 25.00	Spud Date 9/15/2013 11:30	Rig Release Date 5/21/2017 06:00	PBTD (All) (ftKB)	Total Depth All (TVD) (ftKB)

Type

Des	Make	Model	WP (psi)	Service	WP Top (psi)	Bore Min (in)



Casing Strings

Csg Des	OD (in)	Wt/Len (lb/ft)	Grade	Top Thread	Set Depth (ftKB)
SURFACE 1	13 3/8	54.50	J-55	BUTTRESS THREAD	859.0
Intermediate	9 5/8	40.00	L-80 HC	Buttress Thread	6,614.9
Production	5 1/2	17.00	P-110	Buttress Thread	15,991.0

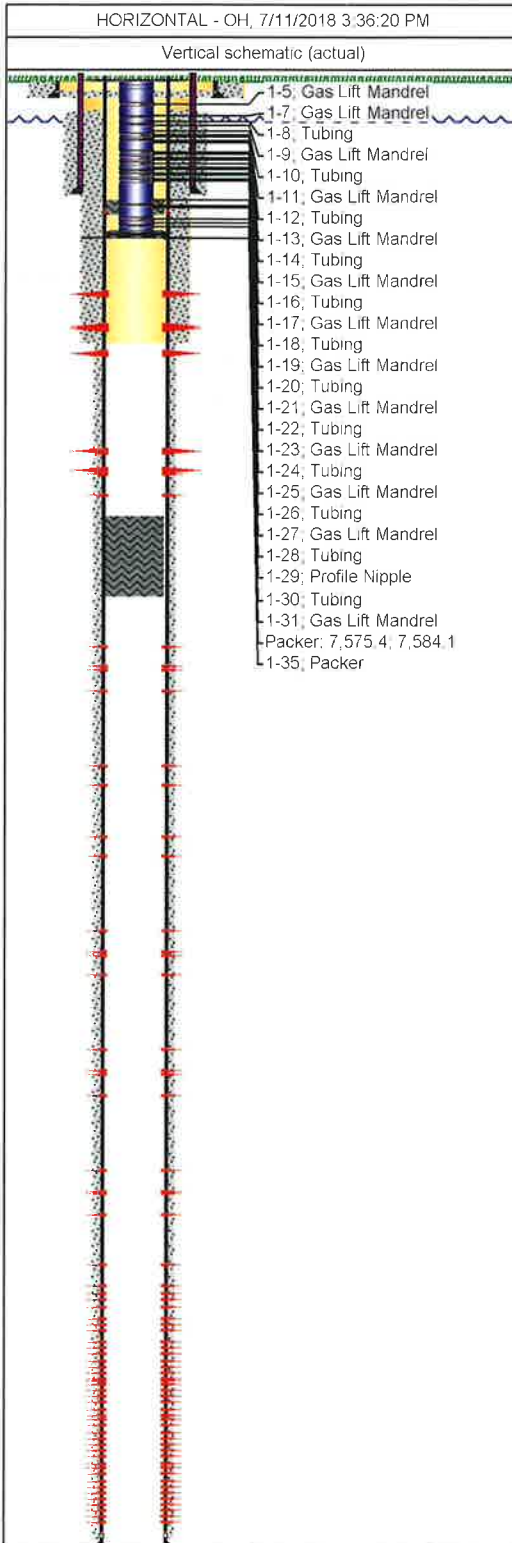
Perforations

Date	Top (ftKB)	Btm (ftKB)	Linked Zone
6/25/2017	8,010.0	8,012.0	
6/25/2017	8,047.0	8,049.0	
6/25/2017	8,083.0	8,085.0	
6/25/2017	8,120.0	8,122.0	
6/25/2017	8,229.0	8,231.0	
6/25/2017	8,229.0	8,231.0	
6/26/2017	8,248.0	8,250.0	
6/26/2017	8,248.0	8,250.0	
6/26/2017	8,248.0	8,250.0	
6/25/2017	8,266.0	8,268.0	
6/26/2017	8,285.0	8,287.0	
6/26/2017	8,285.0	8,287.0	
6/25/2017	8,303.0	8,305.0	
6/26/2017	8,322.0	8,325.0	
6/26/2017	8,322.0	8,325.0	
6/25/2017	8,339.0	8,341.0	
6/26/2017	8,360.0	8,362.0	
6/26/2017	8,360.0	8,362.0	
6/25/2017	8,376.0	8,378.0	
6/25/2017	8,413.0	8,415.0	
6/25/2017	8,449.0	8,451.0	
6/25/2017	8,486.0	8,488.0	
6/25/2017	8,522.0	8,524.0	
6/25/2017	8,559.0	8,561.0	
6/23/2017	8,595.0	8,597.0	
6/23/2017	8,632.0	8,634.0	
6/23/2017	8,668.0	8,670.0	
6/23/2017	8,705.0	8,707.0	
6/23/2017	8,742.0	8,744.0	
6/23/2017	8,778.0	8,780.0	
6/23/2017	8,815.0	8,817.0	
6/23/2017	8,851.0	8,853.0	
6/23/2017	8,889.0	8,891.0	
6/23/2017	8,925.0	8,927.0	
6/23/2017	8,962.0	8,964.0	
6/23/2017	8,998.0	9,000.0	
6/23/2017	9,108.0	9,110.0	
6/23/2017	9,108.0	9,110.0	
6/23/2017	9,145.0	9,147.0	
6/23/2017	9,145.0	9,147.0	
6/23/2017	9,254.0	9,256.0	
6/23/2017	9,254.0	9,256.0	
6/23/2017	9,291.0	9,293.0	
6/23/2017	9,291.0	9,293.0	

Downhole Well Profile

Well Name: UNIVERSITY 10 2704H

API/UWI 4238338226	Surface Legal Location S 27, BLK 10, ULS	Field Name LIN (WOLFCAMP)	Lease Number 756398	State/Province Texas	Well Configuration Type HORIZONTAL
Original KB Elevation (ft) 2,746.00	KB-Ground Distance (ft) 25.00	Spud Date 9/15/2013 11:30	Rig Release Date 5/21/2017 06:00	PBTD (All) (ftKB)	Total Depth All (TVD) (ftKB)

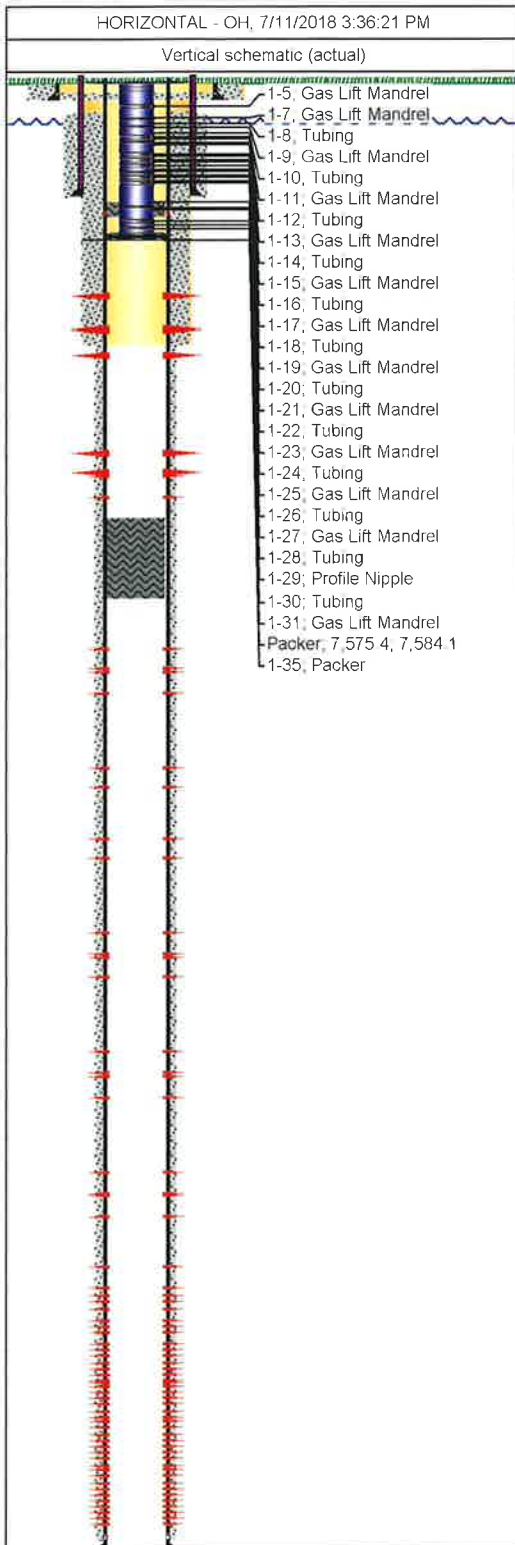


Perforations			
Date	Top (ftKB)	Btm (ftKB)	Linked Zone
6/23/2017	9,328.0	9,330.0	
6/23/2017	9,364.0	9,366.0	
6/23/2017	9,401.0	9,403.0	
6/23/2017	9,438.0	9,440.0	
6/23/2017	9,474.0	9,476.0	
6/23/2017	9,511.0	9,513.0	
6/23/2017	9,547.0	9,549.0	
6/23/2017	9,584.0	9,586.0	
6/21/2017	9,620.0	9,622.0	
6/21/2017	9,657.0	9,659.0	
6/21/2017	9,693.0	9,695.0	
6/21/2017	9,730.0	9,732.0	
6/21/2017	9,767.0	9,769.0	
6/21/2017	9,803.0	9,805.0	
6/21/2017	9,840.0	9,842.0	
6/21/2017	9,876.0	9,878.0	
6/21/2017	9,913.0	9,915.0	
6/21/2017	9,950.0	9,952.0	
6/21/2017	9,986.0	9,988.0	
6/21/2017	10,023.0	10,025.0	
6/21/2017	10,059.0	10,061.0	
6/21/2017	10,096.0	10,098.0	
6/21/2017	10,133.0	10,135.0	
6/21/2017	10,169.0	10,171.0	
6/21/2017	10,206.0	10,208.0	
6/21/2017	10,242.0	10,244.0	
6/21/2017	10,279.0	10,281.0	
6/21/2017	10,316.0	10,318.0	
6/21/2017	10,352.0	10,354.0	
6/21/2017	10,389.0	10,391.0	
6/21/2017	10,425.0	10,427.0	
6/21/2017	10,462.0	10,464.0	
6/21/2017	10,499.0	10,501.0	
6/21/2017	10,536.0	10,538.0	
6/21/2017	10,572.0	10,574.0	
6/21/2017	10,609.0	10,611.0	
6/21/2017	10,646.0	10,648.0	
6/21/2017	10,682.0	10,684.0	
6/21/2017	10,719.0	10,721.0	
6/21/2017	10,755.0	10,757.0	
6/21/2017	10,792.0	10,794.0	
6/21/2017	10,829.0	10,831.0	
6/21/2017	10,865.0	10,867.0	
6/21/2017	10,902.0	10,904.0	
6/21/2017	10,938.0	10,940.0	
6/21/2017	10,975.0	10,977.0	
6/21/2017	11,012.0	11,014.0	
6/21/2017	11,048.0	11,050.0	
6/20/2017	11,081.0	11,083.0	
6/20/2017	11,121.0	11,123.0	
6/20/2017	11,158.0	11,160.0	

Downhole Well Profile

Well Name: UNIVERSITY 10 2704H

API/UWI 4238338226	Surface Legal Location S 27, BLK 10, ULS	Field Name LIN (WOLFCAMP)	Lease Number 756398	State/Province Texas	Well Configuration Type HORIZONTAL
Original KB Elevation (ft) 2,746.00	KB-Ground Distance (ft) 25.00	Spud Date 9/15/2013 11:30	Rig Release Date 5/21/2017 06:00	PBTD (All) (ftKB)	Total Depth All (TVD) (ftKB)

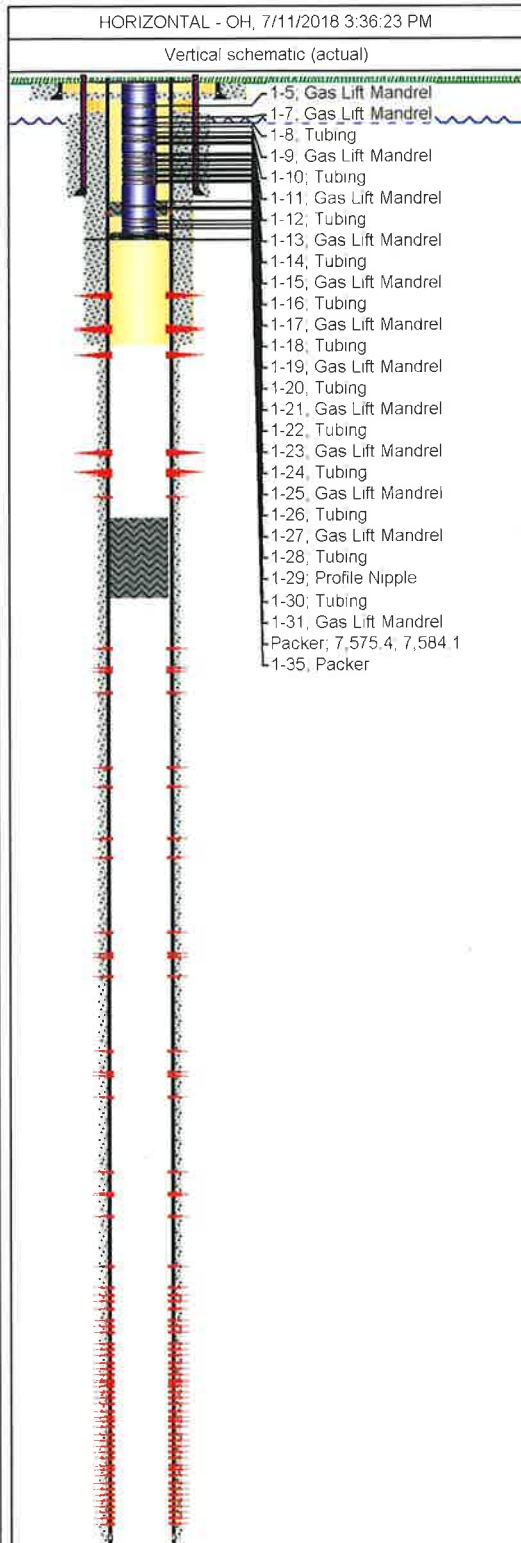


Perforations			
Date	Top (ftKB)	Btm (ftKB)	Linked Zone
6/20/2017	11,195.0	11,197.0	
6/20/2017	11,231.0	11,233.0	
6/20/2017	11,268.0	11,270.0	
6/20/2017	11,304.0	11,306.0	
6/20/2017	11,341.0	11,343.0	
6/19/2017	11,377.0	11,379.0	
6/19/2017	11,414.0	11,416.0	
6/19/2017	11,450.0	11,452.0	
6/19/2017	11,487.0	11,489.0	
6/19/2017	11,524.0	11,526.0	
6/19/2017	11,561.0	11,563.0	
6/19/2017	11,597.0	11,599.0	
6/19/2017	11,634.0	11,636.0	
6/19/2017	11,670.0	11,672.0	
6/19/2017	11,707.0	11,709.0	
6/19/2017	11,744.0	11,746.0	
6/19/2017	11,780.0	11,782.0	
6/18/2017	11,816.0	11,818.0	
6/18/2017	11,853.0	11,855.0	
6/18/2017	11,890.0	11,892.0	
6/18/2017	11,926.0	11,928.0	
6/18/2017	11,963.0	11,965.0	
6/18/2017	11,999.0	12,001.0	
6/18/2017	12,036.0	12,038.0	
6/18/2017	12,073.0	12,075.0	
6/18/2017	12,109.0	12,111.0	
6/18/2017	12,146.0	12,148.0	
6/18/2017	12,182.0	12,184.0	
6/18/2017	12,219.0	12,221.0	
6/18/2017	12,256.0	12,258.0	
6/18/2017	12,293.0	12,295.0	
6/18/2017	12,329.0	12,331.0	
6/18/2017	12,366.0	12,368.0	
6/18/2017	12,403.0	12,405.0	
6/18/2017	12,439.0	12,441.0	
6/18/2017	12,480.0	12,482.0	
6/18/2017	12,512.0	12,514.0	
6/17/2017	12,548.0	12,550.0	
6/17/2017	12,585.0	12,587.0	
6/17/2017	12,622.0	12,624.0	
6/17/2017	12,658.0	12,660.0	
6/17/2017	12,695.0	12,697.0	
6/17/2017	12,732.0	12,734.0	
6/17/2017	12,768.0	12,770.0	
6/17/2017	12,805.0	12,807.0	
6/17/2017	12,841.0	12,843.0	
6/17/2017	12,878.0	12,880.0	
6/17/2017	12,915.0	12,917.0	
6/17/2017	12,951.0	12,953.0	
6/17/2017	12,988.0	12,990.0	
6/17/2017	13,025.0	13,027.0	

Downhole Well Profile

Well Name: UNIVERSITY 10 2704H

API/UWI 4238338226	Surface Legal Location S 27, BLK 10, ULS	Field Name LIN (WOLFCAMP)	Lease Number 756398	State/Province Texas	Well Configuration Type HORIZONTAL
Original KB Elevation (ft) 2,746.00	KB-Ground Distance (ft) 25.00	Spud Date 9/15/2013 11:30	Rig Release Date 5/21/2017 06:00	PBTD (All) (ftKB)	Total Depth All (TVD) (ftKB)

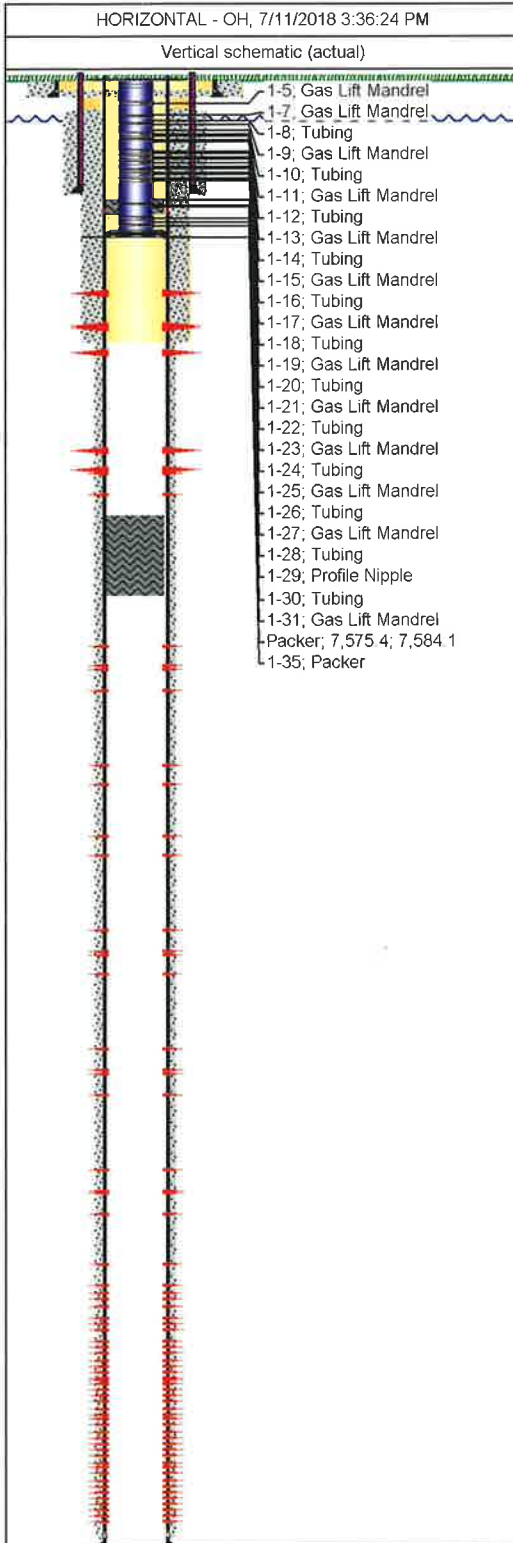


Perforations			
Date	Top (ftKB)	Btm (ftKB)	Linked Zone
6/17/2017	13,061.0	13,063.0	
6/17/2017	13,098.0	13,100.0	
6/17/2017	13,135.0	13,137.0	
6/17/2017	13,171.0	13,173.0	
6/17/2017	13,208.0	13,210.0	
6/17/2017	13,244.0	13,246.0	
6/16/2017	13,281.0	13,283.0	
6/16/2017	13,317.0	13,319.0	
6/16/2017	13,354.0	13,356.0	
6/16/2017	13,390.0	13,392.0	
6/16/2017	13,427.0	13,429.0	
6/16/2017	13,464.0	13,466.0	
6/16/2017	13,500.0	13,502.0	
6/16/2017	13,537.0	13,539.0	
6/16/2017	13,574.0	13,576.0	
6/16/2017	13,611.0	13,613.0	
6/16/2017	13,647.0	13,649.0	
6/16/2017	13,684.0	13,686.0	
6/16/2017	13,720.0	13,722.0	
6/16/2017	13,757.0	13,759.0	
6/16/2017	13,794.0	13,796.0	
6/16/2017	13,830.0	13,832.0	
6/16/2017	13,870.0	13,872.0	
6/16/2017	13,903.0	13,905.0	
6/16/2017	13,940.0	13,942.0	
6/16/2017	13,977.0	13,979.0	
6/15/2017	14,013.0	14,015.0	
6/15/2017	14,049.0	14,051.0	
6/15/2017	14,086.0	14,088.0	
6/15/2017	14,123.0	14,125.0	
6/15/2017	14,160.0	14,162.0	
6/15/2017	14,196.0	14,198.0	
6/15/2017	14,233.0	14,235.0	
6/15/2017	14,269.0	14,271.0	
6/15/2017	14,310.0	14,312.0	
6/15/2017	14,343.0	14,345.0	
6/15/2017	14,379.0	14,381.0	
6/15/2017	14,416.0	14,418.0	
6/14/2017	14,452.0	14,454.0	
6/14/2017	14,489.0	14,491.0	
6/14/2017	14,525.0	14,527.0	
6/14/2017	14,562.0	14,564.0	
6/14/2017	14,598.0	14,600.0	
6/14/2017	14,635.0	14,637.0	
6/14/2017	14,672.0	14,674.0	
6/14/2017	14,708.0	14,710.0	
6/14/2017	14,745.0	14,747.0	
6/14/2017	14,781.0	14,783.0	
6/14/2017	14,818.0	14,820.0	
6/14/2017	14,855.0	14,857.0	
6/14/2017	14,894.0	14,896.0	

Downhole Well Profile

Well Name: UNIVERSITY 10 2704H

API/UWI 4238338226	Surface Legal Location S 27, BLK 10, ULS	Field Name LIN (WOLFCAMP)	Lease Number 756398	State/Province Texas	Well Configuration Type HORIZONTAL
Original KB Elevation (ft) 2,746.00	KB-Ground Distance (ft) 25.00	Spud Date 9/15/2013 11:30	Rig Release Date 5/21/2017 06:00	PBTD (All) (ftKB)	Total Depth All (TVD) (ftKB)



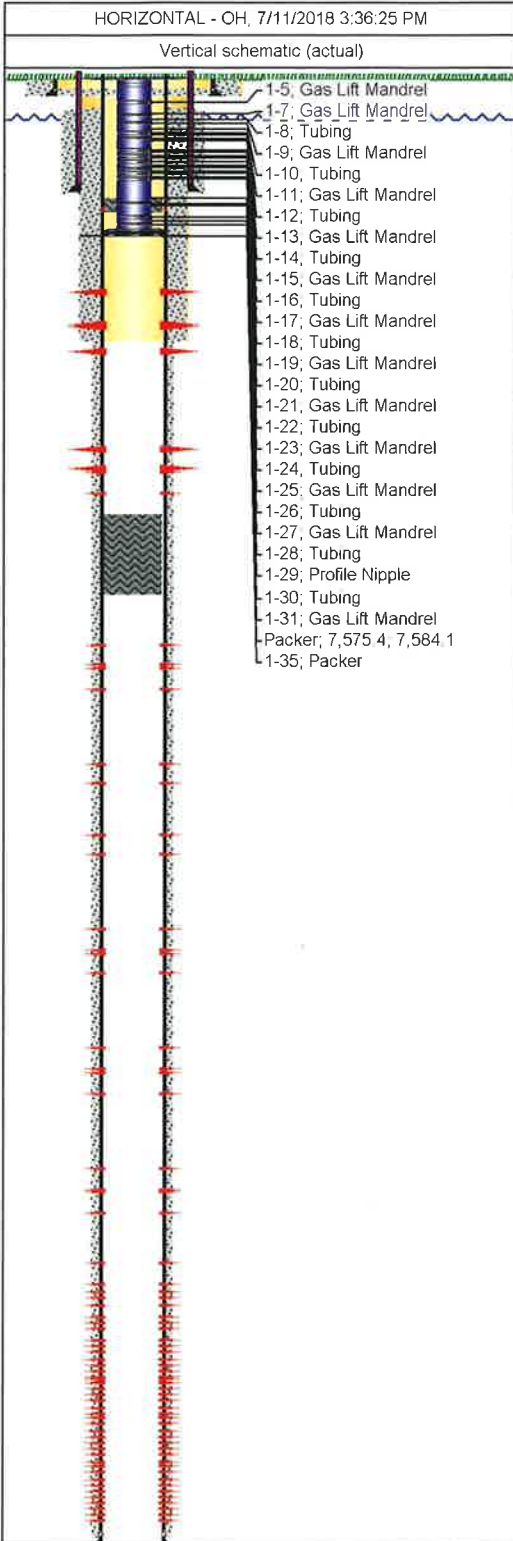
Perforations			
Date	Top (ftKB)	Btm (ftKB)	Linked Zone
6/14/2017	14,928.0	14,930.0	
6/14/2017	14,965.0	14,967.0	
6/14/2017	15,001.0	15,003.0	
6/13/2017	15,038.0	15,040.0	
6/13/2017	15,074.0	15,076.0	
6/13/2017	15,111.0	15,113.0	
6/13/2017	15,147.0	15,149.0	
6/13/2017	15,184.0	15,186.0	
6/13/2017	15,221.0	15,223.0	
6/13/2017	15,257.0	15,259.0	
6/13/2017	15,294.0	15,296.0	
6/13/2017	15,331.0	15,333.0	
6/13/2017	15,368.0	15,370.0	
6/13/2017	15,404.0	15,406.0	
6/13/2017	15,441.0	15,443.0	
6/12/2017	15,477.0	15,479.0	
6/12/2017	15,513.0	15,515.0	
6/12/2017	15,550.0	15,552.0	
6/12/2017	15,587.0	15,589.0	
6/12/2017	15,623.0	15,625.0	
6/12/2017	15,660.0	15,662.0	
6/12/2017	15,696.0	15,698.0	
6/12/2017	15,733.0	15,735.0	
6/8/2017	15,770.0	15,772.0	
6/8/2017	15,806.0	15,808.0	
6/8/2017	15,843.0	15,845.0	
6/8/2017	15,880.0	15,882.0	

Tubing Strings									
Tubing Description	Run Date		String Length (ft)		Set Depth (ftKB)				
Tubing - Production	8/5/2017		7,560.47		7,584.6				
Item Des	Jts	Model	OD (in)	ID (in)	Wt (lb/ft)	Grade	Len (ft)	Top (ftKB)	Btm (ftKB)
Tubing Hanger	1		7				0.90	24.1	25.0
Tubing	1	T&C Non-Upset	2 7/8	2.44	6.40	J-55	32.62	25.0	57.6
Tubing	3	T&C Non-Upset	2 7/8	2.44	6.40	J-55	26.00	57.6	83.6
Tubing	55	T&C Non-Upset	2 7/8	2.44	6.40	J-55	1,793.85	83.6	1,877.5
Gas Lift Mandrel	1		2 7/8		6.40	J-55	4.10	1,877.5	1,881.6
Tubing	15		2 7/8		6.40	J-55	489.71	1,881.6	2,371.3
Gas Lift Mandrel	1		2 7/8		6.40	J-55	4.10	2,371.3	2,375.4
Tubing	12		2 7/8		6.40	J-55	392.03	2,375.4	2,767.4
Gas Lift Mandrel	1		2 7/8		6.40	J-55	4.10	2,767.4	2,771.5
Tubing	12		2 7/8		6.40	J-55	391.92	2,771.5	3,163.4
Gas Lift Mandrel	1		2 7/8		6.40	J-55	4.10	3,163.4	3,167.5
Tubing	14		2 7/8		6.40	J-55	456.81	3,167.5	3,624.3
Gas Lift Mandrel	1		2 7/8		6.40	J-55	4.10	3,624.3	3,628.4
Tubing	14		2 7/8		6.40	J-55	456.66	3,628.4	4,085.1
Gas Lift Mandrel	1		2 7/8		6.40	J-55	4.10	4,085.1	4,089.2
Tubing	13		2 7/8		6.40	J-55	423.97	4,089.2	4,513.2
Gas Lift Mandrel	1		2 7/8		6.40	J-55	4.10	4,513.2	4,517.3

Downhole Well Profile

Well Name: UNIVERSITY 10 2704H

API/UWI 4238338226	Surface Legal Location S 27, BLK 10, ULS	Field Name LIN (WOLFCAMP)	Lease Number 756398	State/Province Texas	Well Configuration Type HORIZONTAL
Original KB Elevation (ft) 2,746.00	KB-Ground Distance (ft) 25.00	Spud Date 9/15/2013 11:30	Rig Release Date 5/21/2017 06:00	PBTD (All) (ftKB)	Total Depth All (TVD) (ftKB)



Item Des	Jts	Model	OD (in)	ID (in)	Wt (lb/ft)	Grade	Len (ft)	Top (ftKB)	Btm (ftKB)
Tubing	14		2 7/8		6.40	J-55	456.54	4,517.3	4,973.8
Gas Lift Mandrel	1		2 7/8		6.40	J-55	4.10	4,973.8	4,977.9
Tubing	15		2 7/8		6.40	J-55	489.24	4,977.9	5,467.2
Gas Lift Mandrel	1		2 7/8		6.40	J-55	4.10	5,467.2	5,471.3
Tubing	16		2 7/8		6.40	J-55	521.57	5,471.3	5,992.8
Gas Lift Mandrel	1		2 7/8		6.40	J-55	4.10	5,992.8	5,996.9
Tubing	15		2 7/8		6.40	J-55	489.13	5,996.9	6,486.1
Gas Lift Mandrel	1		2 7/8		6.40	J-55	4.10	6,486.1	6,490.2
Tubing	15		2 7/8		6.40	J-55	489.03	6,490.2	6,979.2
Gas Lift Mandrel	1		2 7/8		6.40	J-55	4.10	6,979.2	6,983.3
Tubing	16		2 7/8		6.40	J-55	521.66	6,983.3	7,504.9
Profile Nipple	1		2 7/8	2.31	6.40	J-55	1.10	7,504.9	7,506.0
Tubing	1		2 7/8		6.40	J-55	32.60	7,506.0	7,538.6
Gas Lift Mandrel	1		2 7/8	2.44	6.40	J-55	4.10	7,538.6	7,542.7
Tubing	1	T&C Non- Upset	2 7/8	2.44	6.40	J-55	32.61	7,542.7	7,575.4
Overshot	1						1.50	7,575.4	7,576.9
Pump Seating Nipple	1			2.25			0.37	7,576.9	7,577.2
Packer	1		5 1/2				6.90	7,577.2	7,584.1
Tubing Plug	1						0.45	7,584.1	7,584.6

Rod Strings

Rod Description	Run Date		String Length (ft)	Set Depth (ftKB)			
Item Des	Jts	Make	Model	OD (in)	Wt (lb/ft)	Grade	Len (ft)