



RAILROAD COMMISSION OF TEXAS

Form W-2

1701 N. Congress  
P.O. Box 12967  
Austin, Texas 78701-2967

Status: Approved  
Date: 01/16/2014  
Tracking No.: 74995

OIL WELL POTENTIAL TEST, COMPLETION OR RECOMPLETION REPORT, AND LOG

OPERATOR INFORMATION

Operator Name: EOG RESOURCES, INC. Operator No.: 253162  
Operator Address: ATTN PRODUCTION REGULATORY PO BOX 2267 MIDLAND, TX 79702-0000

WELL INFORMATION

API No.: 42-235-35002 County: IRION  
Well No.: 0906H RRC District No.: 7C  
Lease Name: UNIVERSITY 43 Field Name: LIN (WOLFCAMP)  
RRC Lease No.: 17569 Field No.: 53613750  
Location: Section: 9, Block: 43, Survey: UL, Abstract:  
  
Latitude: Longitude:  
This well is located miles in a  
direction from 3.8 MILES W BARNHART,  
which is the nearest town in the county.

FILING INFORMATION

Purpose of filing: Well Record Only  
Type of completion: New Well  
Well Type: Shut-In Producer Completion or Recompletion Date: 11/26/2012  
  
Type of Permit Date Permit No.  
Permit to Drill, Plug Back, or Deepen 06/27/2012 734094  
Rule 37 Exception  
Fluid Injection Permit  
O&G Waste Disposal Permit  
Other:

COMPLETION INFORMATION

Spud date: Date of first production after rig released: 11/26/2012  
Date plug back, deepening, recompletion, or drilling operation commenced: 11/26/2012 Date plug back, deepening, recompletion, or drilling operation ended: 11/26/2012  
Number of producing wells on this lease in this field (reservoir) including this well: 26 Distance to nearest well in lease & reservoir (ft.): 40.0  
Total number of acres in lease: 4164.80 Elevation (ft.): 2633 GR  
Total depth TVD (ft.): 800 Total depth MD (ft.): 800  
Plug back depth TVD (ft.): 800 Plug back depth MD (ft.): 800  
Was directional survey made other than inclination (Form W-12)? Yes Rotation time within surface casing (hours):  
Is Cementing Affidavit (Form W-15) attached? Yes  
Recompletion or reclass? No Multiple completion? No  
Type(s) of electric or other log(s) run: None  
Electric Log Other Description:  
Location of well, relative to nearest lease boundaries Off Lease : No  
of lease on which this well is located: 7850.0 Feet from the North Line and  
2910.0 Feet from the West Line of the  
UNIVERSITY 43 Lease.

FORMER FIELD (WITH RESERVOIR) & GAS ID OR OIL LEASE NO.

Field & Reservoir Gas ID or Oil Lease No. Well No. Prior Service Type

PACKET: N/A

W2: N/A

FOR NEW DRILL OR RE-ENTRY, SURFACE CASING DEPTH DETERMINED BY:

GAU Groundwater Protection Determination

Depth (ft.):

Date: 07/27/2012

SWR 13 Exception

Depth (ft.):

INITIAL POTENTIAL TEST DATA FOR NEW COMPLETION OR RECOMPLETION

Date of test:

Production method:

Number of hours tested: 24

Choke size:

Was swab used during this test? No

Oil produced prior to test:

PRODUCTION DURING TEST PERIOD:

Oil (BBLs):

Gas (MCF):

Gas - Oil Ratio: 0

Flowing Tubing Pressure:

Water (BBLs):

CALCULATED 24-HOUR RATE

Oil (BBLs):

Gas (MCF):

Oil Gravity - API - 60.:

Casing Pressure:

Water (BBLs):

CASING RECORD											
Row	Type of Casing	Casing Hole		Setting	Multi -	Multi -	Cement	Cement	Slurry	Top of	TOC
		Size	Size	Depth	Stage	Stage		Amount	Volume	Cement	Determined
		(in.)	(in.)	(ft.)	Depth (ft.)	Depth (ft.)	Class	(sacks)	(cu. ft.)	(ft.)	By
1		9 5/8	12 1/4	800			C	542	721.0	SURFACE	

LINER RECORD									
Row	Liner Size (in.)	Hole Size (in.)	Liner Top (ft.)	Liner Bottom (ft.)	Cement Class	Cement Amount (sacks)	Slurry Volume (cu. ft.)	Top of Cement (ft.)	TOC Determined By
N/A									

TUBING RECORD			
Row	Size (in.)	Depth	Size (ft.)
N/A			

Packer Depth (ft.)/Type	
/	

PRODUCING/INJECTION/DISPOSAL INTERVAL			
Row	Open hole?	From (ft.)	To (ft.)
N/A			

ACID, FRACTURE, CEMENT SQUEEZE, CAST IRON BRIDGE PLUG, RETAINER, ETC.

Was hydraulic fracturing treatment performed? No

Is well equipped with a downhole actuation sleeve? No

If yes, actuation pressure (PSIG):

Production casing test pressure (PSIG) prior to hydraulic fracturing treatment:

Actual maximum pressure (PSIG) during hydraulic fracturing:

Has the hydraulic fracturing fluid disclosure been reported to FracFocus disclosure registry (SWR29)? No

Row

Type of Operation

Amount and Kind of Material Used

Depth Interval (ft.)

N/A



Cementor: Fill in shaded areas  
Operator: Fill in other items

Form W-15  
Cementing Report

# RAILROAD COMMISSION OF TEXAS

Oil and Gas Division

1. Operator's Name (As Shown on Form P-5, Organization Report)	2. RRC Operator No.	3. RRC District No.	4. County of Well Site
EOG RESOURCES	253162	7C	IRION
5. Field Name (Wildcat or Exactly as Shown on RRC Records)	6. API No.	7. Drilling Permit No.	
Lin (Wolfcamp)	42-235-35002	734094	
8. Lease Name	9. Rule 37 Case No.	10. Oil Lease/Gas ID No.	11. Well Number
UNIVERSITY 43		17569	0906H

CASING CEMENTING DATA:		SURFACE CASING	INTERMEDIATE CASING	PRODUCTION CASING		MULTI-STAGE CEMENTING PROCESS	
				SINGLE STRING	MULTIPLE PARALLEL STRINGS	TOOL	SHOE
12. Cementing Date		11/28/2012					
13. *Drilled Hole Size		12.25					
*Ext. % Wash or Hole Enlargement							
14. Size of Casing (in. O.D.)		9.625					
15. Top of Liner (ft)							
16. Setting Depth (ft)		800					
17. Number of Centralizers Used		7					
18. Hrs. Waiting on Cement Before Drill-Out		24+					
1st slurry	19. API Cement Used: No. of Sacks >	500					
	Class >	C					
	Additives >	Remarks # 1					
2nd slurry	No. of Sacks >						
	Class >						
	Additives >						
3rd slurry	No. of Sacks >						
	Class >						
	Additives >						
1st	20. Slurry Pumped: Volume (cu.ft.) >	665.00					
	Height (ft) >	2115.00					
2nd	Volume (cu.ft.) >						
	Height (ft) >						
3rd	Volume (cu.ft.) >						
	Height (ft) >						
Total	Volume (cu.ft.) >	665.00					
	Height (ft) >	2115					
21. Was Cement Circulated to Ground Surface (or Bottom of Celler) Outside Casing?		NO					
22. Remarks							
REMARKS # 1 CLASS C + 2% CACL2 + 0.25% R-38							

OVER ➔

CEMENTING TO PLUG AND ABANDON	PLUG #1	PLUG #2	PLUG #3	PLUG #4	PLUG #5	PLUG #6	PLUG #7	PLUG #8
23. Cementing Date								
24. Size of Hole or Pipe Plugged (in)								
25. Depth to Bottom of Tubing or Drill Pipe (ft)								
26. Sacks of Cement Used (each plug)								
27. Slurry Volume Pumped (cu ft)								
28. Calculated Top of Plug (ft)								
29. Measured Top of Plug, If Tagged (ft)								
30. Slurry Wt. (lbs/gal)								
31. Type Cement								

**CEMENTERS CERTIFICATE:** I declare under penalties prescribed in Sec. 91.143, Texas Natural Resources Code, that I am authorized to make this certification, that the cementing of casing and/or the placing of cement plugs in this well as shown in the report was performed by me or under my supervision, and that the cementing data and facts presented on both sides of this form are true, correct, and complete to the best of my knowledge. This certification covers cementing data only.

**DANIEL AGUILAR**

**RISING STAR SERVICES LP.**

Name and Title of Cementer's Representative

Cementing Company

Signature

**P.O. BOX 61193 MIDLAND TX 79711**

**(432) 617-0114**

**NOVEMBER 28 2012**

Address

City

State

Zip Code

Tel. Area Code

Number

Date: Mo. Day Yr.

**OPERATOR'S CERTIFICATE:** I declare under penalties prescribed in Sec. 91.143, Texas Natural Resources Code, that I am authorized to make this certification, that I have knowledge of the well data and information presented in this report, and that data and facts presented on both sides of this form are true, correct, and complete, to the best of my knowledge. This certification covers all well data.

**Renee Jarratt**

**Regulatory Analyst**

Typed or Printed Name of Operators Representative

Title

Signature

**P.O. Box 2267, Midland, TX 79702**

**432-686-3684**

**11/23/13**

Address

City

State

Zip Code

Tel. Area Code

Number

Date: Mo. Day Yr.

### Instruction to Form W-15, Cementing Report

**IMPORTANT:** Operators and cementing companies must comply with the requirements of the Commission's Statewide rules 8 (Water Protection), 13 (Casing, Cementing, Drilling, and Completion, and 14 (Well Plugging). For offshore operations, see the requirements of Rule 13 (c).

**A. What to file.** An operator should file an original and one copy of the completed Form W-15 for each cementing company used on a well. The cementing of different casing strings on a well by one cementing company may be reported on one form. Form W-15 should be filed with the following:

- \* An initial oil or gas completion report, Form W-2 or G-1, as required by Statewide or special field rules;
- \* Form W-4, Application for Multiple Completion, if the well is a multiple parallel casing completion; and
- \* Form W-3, Plugging Record, unless the W-3 is signed by the cementing company representative. When reporting dry holes, operators must complete W-15, in addition to Form W-3, to show any casing cemented in the hole.

**B. Where to file.** The appropriate Commission District Office for the county in which the well is located.

**C. Surface casing.** An operator must set and cement sufficient surface casing to protect all usable-quality water strata, as defined by the Texas Department of Water Resources, Austin. Before drilling a well in any field or area in which no field rules are in effect or in which surface casing requirements are not specified in the applicable rules, an operator must obtain a letter from the Department of Water Resources stating the protection depth. Surface casing should not be set deeper than 200 feet below the specified depth without prior approval from the Commission.

**D. Centralizers.** Surface casing must be centralized at the shoe, above and below a stage collar or diverting tool, if run, and through usable-quality water zones. In nondeviated holes, a centralizer must be placed every fourth joint from the cement shoe to the ground surface or to the bottom of the cellar. All centralizers must meet API specifications.

**E. Exceptions and alternative casing programs.** The District Director may grant an exception to the requirements of Statewide Rule 13. In a written applications, an operator must state the reason for the requested exception and outline an alternate program for casing and cementing through the protection depth for strata containing usable-quality water. The District Director may approve, modify, or reject a proposed program. An operator must obtain approval of any exception before beginning casing and cementing operations.

**F. Intermediate and production casing.** For specific technical requirements, operators should consult Statewide Rule 12 (b) (3) and (4).

**G. Plugging and abandoning.** Cement plugs must be placed in the wellbore as required by Statewide Rule 14. The District Director may require additional cement plugs. For onshore or inland wells, a 10-foot cement plug must be placed in the top of the well, and the casing must be cut off three feet below the ground surface. All cement plugs, except the top plug, must have sufficient slurry volume to fill 100 feet of hole, plus ten percent for each 1000 feet of depth from the ground surface to the bottom of the plug.

To plug and abandon a well, operators must use only cementers approved by the Director of Field Operations. Cementing companies, service companies, or operators can qualify as approved cementers by demonstrating that they are able to mix and pump cement in compliance with Commission rules and regulations.

Cementor: Fill in shaded areas  
Operator: Fill in other items

Form W-15  
Cementing Report

# RAILROAD COMMISSION OF TEXAS

Oil and Gas Division

1. Operator's Name (As Shown on Form P-5, Organization Report)	2. RRC Operator No.	3. RRC District No.	4. County of Well Site
EOG Resources, Inc.	253162	7C	IRION
5. Field Name (Wildcat or Exactly as Shown on RRC Records)	6. API No.	7. Drilling Permit No.	
Lin (Wolfcamp)	42-235-35002	734094	
8. Lease Name	9. Rule 37 Case No.	10. Oil Lease/Gas ID No.	11. Well Number
UNIVERSITY 43		17569	0906H

CASING CEMENTING DATA:		SURFACE CASING	INTERMEDIATE CASING	PRODUCTION CASING		MULTI-STAGE CEMENTING PROCESS	
				SINGLE STRING	MULTIPLE PARALLEL STRINGS	TOOL	SHOE
12. Cementing Date		11/30/2012					
13. *Drilled Hole Size		12.250					
*Ext. % Wash or Hole Enlargement							
14. Size of Casing (in. O.D.)		9.625					
15. Top of Liner (ft)							
16. Setting Depth (ft)		800					
17. Number of Centralizers Used		7					
18. Hrs. Waiting on Cement Before Drill-Out		24+					
1st slurry	19. API Cement Used: No. of Sacks >	42					
	Class >	CLASS C					
	Additives >	SEE REMARKS					
2nd slurry	No. of Sacks >						
	Class >						
	Additives >						
3rd slurry	No. of Sacks >						
	Class >						
	Additives >						
1st	20. Slurry Pumped: Volume (cu.ft.) >	55.86					
	Height (ft) >	178.36					
2nd	Volume (cu.ft.) >						
	Height (ft) >						
3rd	Volume (cu.ft.) >						
	Height (ft) >						
Total	Volume (cu.ft.) >	56					
	Height (ft) >	178					
21. Was Cement Circulated to Ground Surface (or Bottom of Casing) Outside Casing?		YES					
22. Remarks							
CLASS C + 2% CACL2 + 0.25% R-38							
CIRCULATED 5BBLs 21SKS OF CEMENT TO SURFACE							

OVER →

CEMENTING TO PLUG AND ABANDON	PLUG#1	PLUG #2	PLUG #3	PLUG #4	PLUG #5	PLUG #6	PLUG #7	PLUG #8
23. Cementing Date								
24. Size of Hole or Pipe Plugged (in)								
25. Depth to Bottom of Tubing or Drill Pipe (ft)								
26. Sacks of Cement Used (each plug)								
27. Slurry Volume Pumped (cu. ft.)								
28. Calculated Top of Plug (ft)								
29. Measured Top of Plug, If Tagged (ft)								
30. Slurry Wt. (lbs/gal)								
31. Type Cement								

**CEMENTERS CERTIFICATE:** I declare under penalties prescribed in Sec. 91.143, Texas Natural Resources Code, that I am authorized to make this certification, that the cementing of casing and/or the placing of cement plugs in this well as shown in the report was performed by me or under my supervision, and that the cementing data and facts presented on both sides of this form are true, correct, and complete, to the best of my knowledge. This certification covers cementing data only.

**THOMAS PERLEY**

Name and Title of Cementer's Representative

**RISING STAR SERVICES LP.**

Cementing Company

Signature

**P.O. BOX 61193 MIDLAND TX. 79711**

Address City State Zip Code

**(432) 617-0114**

Tel: Area Code Number

**November 30, 2012**

Date: Mo. Day Yr.

**OPERATOR'S CERTIFICATE:** I declare under penalties prescribed in Sec. 91.143, Texas Natural Resources Code, that I am authorized to make this certification, that I have knowledge of the well data and information presented in this report, and that data and facts presented on both sides of this form are true, correct, and complete, to the best of my knowledge. This certification covers all well data.

**Renee Jarratt**

Typed or Printed Name of Operators Representative

**Regulatory Analyst**

Title

Signature

**P.O. Box 2267, Midland, TX 79702**

Address City State Zip Code

**432-686-3684**

Tel: Area Code Number

**5/23/13**

Date: Mo. Day Yr.

### Instruction to Form W-15, Cementing Report

**IMPORTANT:** Operators and cementing companies must comply with the requirements of the Commission's Statewide rules 8 (Water Protection), 13 (Casing, Cementing, Drilling, and Completion, and 14 (Well Plugging). For offshore operations, see the requirements of Rule 13 (c).

**A. What to file.** An operator should file an original and one copy of the completed Form W-15 for each cementing company used on a well. The cementing of different casing strings on a well by one cementing company may be reported on one form. Form W-15 should be filed with the following:

- \* An initial oil or gas completion report, Form W-2 or G-1, as required by Statewide or special field rules;
- \* Form W-4, Application for Multiple Completion, if the well is a multiple parallel casing completion; and
- \* Form W-3, Plugging Record, unless the W-3 is signed by the cementing company representative. When reporting dry holes, operators must complete W-15, in addition to Form W-3, to show any casing cemented in the hole.

**B. Where to file.** The appropriate Commission District Office for the county in which the well is located.

**C. Surface casing.** An operator must set and cement sufficient surface casing to protect all usable-quality water strata, as defined by the Texas Department of Water Resources, Austin. Before drilling a well in any field or area in which no field rules are in effect or in which surface casing requirements are not specified in the applicable rules, an operator must obtain a letter from the Department of Water Resources stating the protection depth. Surface casing should not be set deeper than 200 feet below the specified depth without prior approval from the Commission.

**D. Centralizers.** Surface casing must be centralized at the shoe, above and below a stage collar or diverting tool, if run, and through usable-quality water zones. In nondeviated holes, a centralizer must be placed every fourth joint from the cement shoe to the ground surface or to the bottom of the cellar. All centralizers must meet API specifications.

**E. Exceptions and alternative casing programs.** The District Director may grant an exception to the requirements of Statewide Rule 13. In a written applications, an operator must state the reason for the requested exception and outline an alternate program for casing and cementing through the protection depth for strata containing usable-quality water. The District Director may approve, modify, or reject a proposed program. An operator must obtain approval of any exception before beginning casing and cementing operations.

**F. Intermediate and production casing.** For specific technical requirements, operators should consult Statewide Rule 12 (b) (3) and (4).

**G. Plugging and abandoning.** Cement plugs must be placed in the wellbore as required by Statewide Rule 14. The District Director may require additional cement plugs. For onshore or inland wells, a 10-foot cement plug must be placed in the top of the well, and the casing must be cut off three feet below the ground surface. All cement plugs, except the top plug, must have sufficient slurry volume to fill 100 feet of hole, plus ten percent for each 1000 feet of depth from the ground surface to the bottom of the plug.

To plug and abandon a well, operators must use only cementers approved by the Director of Field Operations. Cementing companies, service companies, or operators can qualify as approved cementers by demonstrating that they are able to mix and pump cement in compliance with Commission rules and regulations.



Groundwater  
Advisory Unit

GROUNDWATER PROTECTION DETERMINATION

Date June 27, 2012

GAU File No.: SC- 6378

\*\*\*\*\* EXPEDITED APPLICATION \*\*\*\*\*

API Number 23534999

Attention: RENEE JARRATT

RRC Lease No. 000000

SC\_253162\_23534999\_000000\_6378.pdf

EOG RESOURCES INC  
P O BOX 2267  
MIDLAND TX 79702

--Measured--

2694 ft FEL

2550 ft FNL

MRL:SECTION

Digital Map Location:

X-coord/Long 1716422

Y-coord/Lat 531592

Datum 27 Zone C

P-5# 253162

County IRION

Lease & Well No. UNIVERSITY 43 #0904H&ALL

Purpose RD

Location SUR-UL,BLK-43,SEC-9,-- [TD=6750] , [RRC 7C] , [PSC#6284]

To protect usable-quality groundwater at this location, the Groundwater Advisory Unit of the Texas Railroad Commission recommends:

The interval from the land surface to the base of the SANTA ROSA, which is estimated to occur at a depth of 750 feet, must be protected.

This recommendation is applicable to all wells within a radius of 200 feet of this location.

Note: Unless stated otherwise, this recommendation is intended to apply only to the subject well and not for area wide use. This recommendation is intended for normal drilling, production, and plugging operations only. It does not apply to saltwater disposal operation into a nonproductive zone (RRC Form W-14).

If you have any questions, please contact us at 512-463-2741, [gaau@rrc.state.tx.us](mailto:gaau@rrc.state.tx.us), or by mail.

Sincerely,

Digitally signed by George Dunfield  
DN: cn=US, st=TEXAS, o=Austin, ou=Railroad  
Commission of Texas, cn=George  
Dunfield,  
email=george.dunfield@rrc.state.tx.us  
Date: 2012.06.27 15:09:26 -05'00'

George Dunfield, P.G.

Geologist, Groundwater Advisory Unit  
Oil & Gas Division

GEOLOGIST SEAL



The seal appearing on this document was authorized by George Dunfield on 6/27/2012  
Note: Alteration of this electronic document will invalidate the digital signature.





LEASE NAME &amp; WELL NO.:

UNIVERSITY 43 #0906H

TOPOGRAPHY & VEGETATION:

## NATURAL MESQUITE PASTURE

NEAREST TOWN IN COUNTY:

***±3.8 MILES WEST OF BARNHART, TEXAS***

DESCRIPTION:

SHL: SECTION 9, BLOCK 43, UNIVERSITY LAND SURVEY  
THL: SECTION 12, BLOCK 43, UNIVERSITY LAND SURVEY  
IRION COUNTY, TEXAS



NAD 27  
GRID BEARINGS

This location has been very carefully staked on the ground according to the best official survey records, maps, and other data available to us. This plat does not in any way represent a "Boundary Survey", and does not comply with correct T.B.P.L.S. Minimum Standards of Procedures for Boundary Surveys.

CERTIFICATION:



**Surface Hole Location:**

2550' FNL & 2594' FEL  
SHL Ground Elevation: 2633'  
X = 1716522 Y = 531592  
LAT.: N 31.1251767 LONG.: W 101.2393314  
NAD 83 TX-C ZONE  
X = 2012898 Y = 10374170  
LAT.: N 31.1253361 LONG.: W 101.2397229

**Terminus Hole Location:**

100' FSL & 2910' FWL (SEC. 12)  
X = 1716499 Y = 523607  
LAT.: N 31.1032235 LONG.: W 101.2391981  
NAD 83 TX-C ZONE  
X = 1521966 Y = 10366185  
LAT.: N 31.1033837 LONG.: W 101.2395894

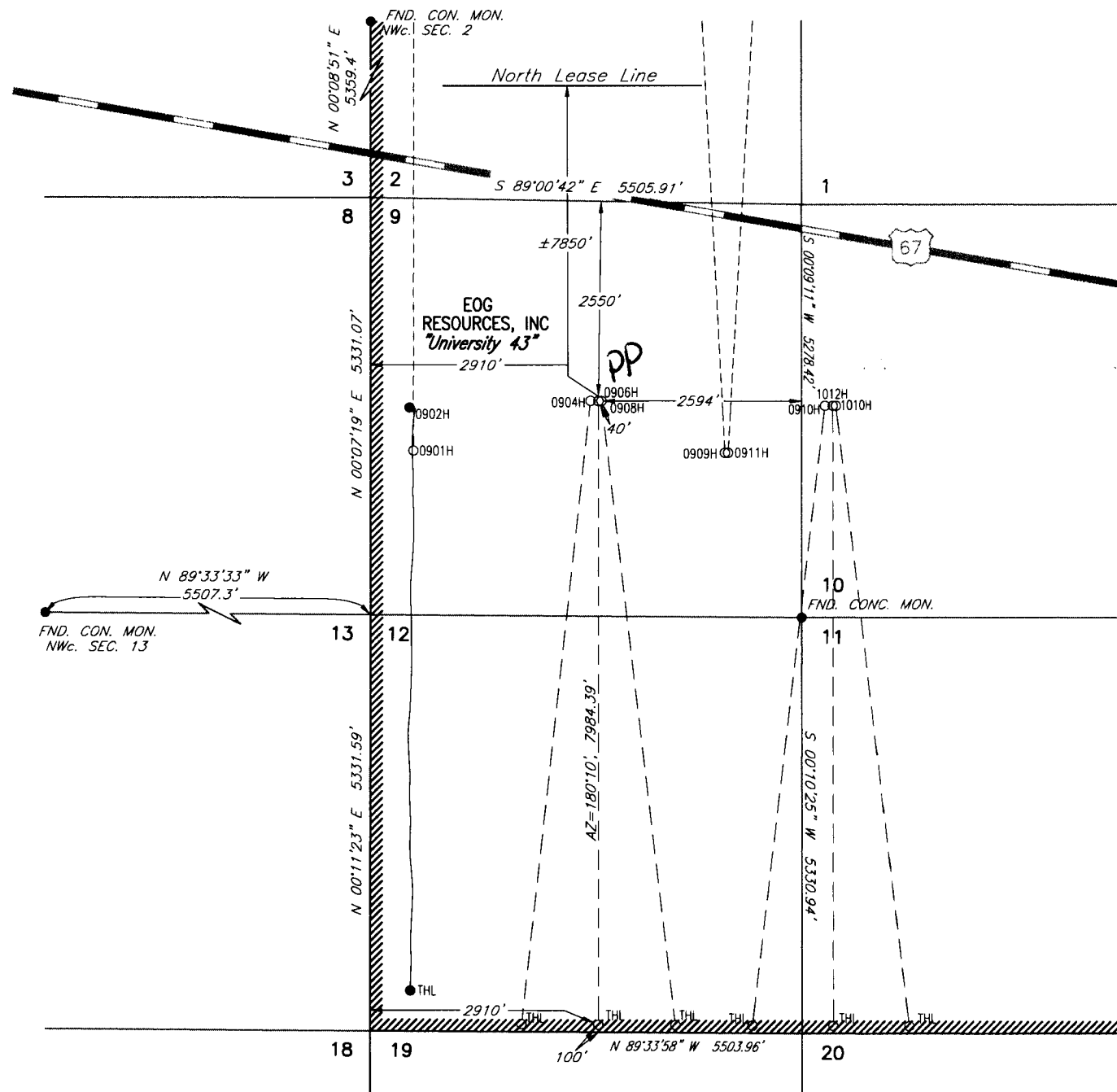
All Coordinates are in NAD 27 TX-C Zone unless otherwise noted.


LEGEND:

— X — Fence  
 — E — Powerline  
 — W — Water Line  
 — \ — Pipeline  
 = = = = = Lease Road

ORIGINAL DOC. SIZE: 8.5"x14"

SCALE:	1" = 1000'
DATE:	MAY 29, 2012
COGO:	518--124590
LO_UNIVERSITY43_0906H_ALT2	
DRAWN BY:	ACP



  
 Texas Reg. No. 5041

I, William J. Keating , a Registered Professional Land Surveyor, and an authorized agent of Topographic Land Surveyors, do hereby certify that the above described well location was surveyed and staked on the ground as shown herein. This plat is for Texas Railroad Commission permitting only.

# TOPOGRAPHIC

SURVEYING • MAPPING • GIS • GPS

2903 N. BIG SPRING \* MIDLAND, TEXAS 79705  
TELEPHONE: (432) 682-1653 \* (800) 767-1653 \* FAX: (432) 682-1743