



RAILROAD COMMISSION OF TEXAS

Form W-2

1701 N. Congress  
P.O. Box 12967  
Austin, Texas 78701-2967

Status: Approved  
Date: 08/10/2017  
Tracking No.: 176334

OIL WELL POTENTIAL TEST, COMPLETION OR RECOMPLETION REPORT, AND LOG

OPERATOR INFORMATION

Operator Name: MWS PRODUCING, INC. Operator No.: 597379  
Operator Address: PO BOX 100 STANTON, TX 79782-0000

WELL INFORMATION

API No.: 42-105-42384 County: CROCKETT  
Well No.: 1 RRC District No.: 7C  
Lease Name: UNIVERSITY 22B Field Name: FARMER (SAN ANDRES)  
RRC Lease No.: 19565 Field No.: 30243500  
Location: Section: 22, Block: 47, Survey: UL, Abstract: U486  
  
Latitude: 31.00144 Longitude: -101.35529  
This well is located 15 miles in a NW  
direction from OZONA,  
which is the nearest town in the county.

FILING INFORMATION

Purpose of filing: Initial Potential  
Type of completion: New Well  
Well Type: Producing Completion or Recompletion Date: 06/27/2017  

Type of Permit	Date	Permit No.
Permit to Drill, Plug Back, or Deepen	04/26/2017	825315
Rule 37 Exception		
Fluid Injection Permit		
O&G Waste Disposal Permit		
Other:		

COMPLETION INFORMATION

Spud date: 05/29/2017	Date of first production after rig released: 06/27/2017
Date plug back, deepening, recompletion, or drilling operation commenced: 05/29/2017	Date plug back, deepening, recompletion, or drilling operation ended: 06/01/2017
Number of producing wells on this lease in this field (reservoir) including this well: 1	Distance to nearest well in lease & reservoir (ft.): 0.0
Total number of acres in lease: 152.20	Elevation (ft.): 2602 RKB
Total depth TVD (ft.): 2350	Total depth MD (ft.):
Plug back depth TVD (ft.): 2283	Plug back depth MD (ft.):
Was directional survey made other than inclination (Form W-12)? No	Rotation time within surface casing (hours): 34.0
Recompletion or reclass? No	Is Cementing Affidavit (Form W-15) attached? Yes
Type(s) of electric or other log(s) run: Acceptable cased hole logs	Multiple completion? No
Electric Log Other Description:	
Location of well, relative to nearest lease boundaries	Off Lease : No
of lease on which this well is located:	368.0 Feet from the East Line and
	1583.0 Feet from the South Line of the
	UNIVERSITY 22B Lease.

FORMER FIELD (WITH RESERVOIR) & GAS ID OR OIL LEASE NO.

Field & Reservoir	Gas ID or Oil Lease No.	Well No.	Prior Service Type
-------------------	-------------------------	----------	--------------------

PACKET: N/A

W2:	N/A		
FOR NEW DRILL OR RE-ENTRY, SURFACE CASING DEPTH DETERMINED BY:			
GAU Groundwater Protection Determination		Depth (ft.): 800.0	Date: 04/03/2017
SWR 13 Exception		Depth (ft.):	

INITIAL POTENTIAL TEST DATA FOR NEW COMPLETION OR RECOMPLETION		
Date of test: 07/04/2017		Production method: Pumping
Number of hours tested: 24		Choke size: NONE
Was swab used during this test?	No	Oil produced prior to test: 149.00
PRODUCTION DURING TEST PERIOD:		
Oil (BBLS): 41.00		Gas (MCF): 39
Gas - Oil Ratio: 951		Flowing Tubing Pressure: 30.00
Water (BBLS): 17		
CALCULATED 24-HOUR RATE		
Oil (BBLS): 41.0		Gas (MCF): 39
Oil Gravity - API - 60.:	34.2	Casing Pressure: 100.00
Water (BBLS): 17		

CASING RECORD											
Row	Type of Casing	Casing Size (in.)	Hole Size (in.)	Setting Depth (ft.)	Multi - Stage Depth (ft.)	Multi - Stage Shoe Depth (ft.)	Cement Class	Cement Amount (sacks)	Slurry Volume (cu. ft.)	Top of Cement (ft.)	TOC Determined By
1	Surface	8 5/8	12 1/4	804			C	450	680.0	SURF	Circulated to Surface
2	Conventional Production	4 1/2	7 7/8	2325			C	300	452.0	ACE 1390	Temperature Survey

LINER RECORD									
Row	Liner Size (in.)	Hole Size (in.)	Liner Top (ft.)	Liner Bottom (ft.)	Cement Class	Cement Amount (sacks)	Slurry Volume (cu. ft.)	Top of Cement (ft.)	TOC Determined By
N/A									

TUBING RECORD				
Row	Size (in.)	Depth	Size (ft.)	Packer Depth (ft.)/Type
1	2 3/8	1951		/

PRODUCING/INJECTION/DISPOSAL INTERVAL			
Row	Open hole?	From (ft.)	To (ft.)
1	No	L 1981	2061.0

ACID, FRACTURE, CEMENT SQUEEZE, CAST IRON BRIDGE PLUG, RETAINER, ETC.			
Was hydraulic fracturing treatment performed?		Yes	
Is well equipped with a downhole actuation sleeve?		If yes, actuation pressure (PSIG):	
No			
Production casing test pressure (PSIG) prior to hydraulic fracturing treatment:		Actual maximum pressure (PSIG) during hydraulic fracturing:	
4000		3003	
Has the hydraulic fracturing fluid disclosure been reported to FracFocus disclosure registry (SWR29)?		Yes	
Row	Type of Operation	Amount and Kind of Material Used	Depth Interval (ft.)
1		147200# SAND, 3287 BBL GELLED FLUID	1981 2061

FORMATION RECORD					
<u>Formations</u>	<u>Encountered</u>	<u>Depth TVD (ft.)</u>	<u>Depth MD (ft.)</u>	<u>Is formation isolated?</u>	<u>Remarks</u>
QUEEN	Yes	1510.0		Yes	
SAN ANDRES	Yes	1863.0		Yes	
LEONARD	No			No	NOT PENETRATED
WOLFCAMP	No			No	NOT PENETRATED
CANYON	No			No	NOT PENETRATED
STRAWN	No			No	NOT PENETRATED
DEVONIAN	No			No	NOT PENETRATED
ELLENBURGER	No			No	NOT PENETRATED

Do the producing interval of this well produce H2S with a concentration in excess of 100 ppm (SWR 36)?

Is the completion being downhole commingled (SWR 10)?

No

Yes

REMARKS

RRC REMARKS
<div><div>PUBLIC COMMENTS:</div><div>CASING RECORD :</div><div>TUBING RECORD:</div><div>PRODUCING/INJECTION/DISPOSAL INTERVAL :</div><div>ACID, FRACTURE, CEMENT SQUEEZE, CAST IRON BRIDGE PLUG, RETAINER, ETC. :</div><div>POTENTIAL TEST DATA:</div></div>

OPERATOR'S CERTIFICATION	
Printed Name: Mike Swinson	Title:
Telephone No.: (432) 756-2902	Date Certified: 07/13/2017



# RAILROAD COMMISSION OF TEXAS

1701 N. Congress  
P.O. Box 12967  
Austin, Texas 78701-2967

Form W-15

Rev. 08/2014

## CEMENTING REPORT

Cementer: Fill in shaded areas.  
Operator: Fill in other items.

### OPERATOR INFORMATION

Operator Name: MWS PRODUCING, INC.

Operator P-5 No.: 597379

Cementer Name: Powerflex Services Inc.

Cementer P-5 No.: 674967

### WELL INFORMATION

District No.: 7C

County: CROCKETT

Well No.: 1

API No.: 42-105-42384

Drilling Permit No.: 825315

Lease Name: 22B

Lease No.: N/A

Field Name: FARMER SAN ANDRES

Field No.: 30243500

### I. CASING CEMENTING DATA

Type of casing: ☐ Conductor ☒ Surface ☐ Intermediate ☐ Liner ☐ Production

Drilled hole size (in.): 12 1/4

Depth of drilled hole (ft.): 825

Est. % wash-out or hole enlargement: 30

Size of casing in O.D. (in.): 8 5/8

Casing weight (lbs/ft) and grade: 32# J55

No. of centralizers used: 10

Was cement circulated to ground surface (or bottom of cellar) outside casing? ☒ YES ☐ NO If no for surface casing, explain in Remarks.

Setting depth shoe (ft.):

Top of liner (ft.):

804

Setting depth liner (ft.):

Hrs. waiting on cement before drill-out:

Calculated top of cement (ft.):

Cementing date: 8-30-17

#### SLURRY

Slurry No.	No. of Sacks	Class	Additives	Volume (cu. ft.)	Height (ft.)
1	225	C	4% Gel 2% CC 1/4# Floccle	383	928
2	225	C	2% CC 1/4# Floccle	297	720
3					
Total	450	C		680	1648

### II. CASING CEMENTING DATA

Type of casing: ☐ Surface ☐ Intermediate ☐ Production ☐ Tapered production ☐ Multi-stage cement shoe ☐ Multiple parallel strings

Drilled hole size (in.):

Depth of drilled hole (ft.):

Est. % wash-out or hole enlargement:

Size of casing in O.D. (in.):

Casing weight (lbs/ft) and grade:

No. of centralizers used:

Tapered string drilled hole size (in.)

Tapered string depth of drilled hole (ft.)

Upper:

Lower:

Upper:

Lower:

Tapered string size of casing in O.D. (in.)

Tapered string casing weight (lbs/ft) and grade

Tapered string no. of centralizers used

Upper:

Lower:

Upper:

Lower:

Upper:

Lower:

Was cement circulated to ground surface (or bottom of cellar) outside casing? ☐ YES ☐ NO

Setting depth shoe (ft.):

Hrs. waiting on cement before drill-out:

Calculated top of cement (ft.):

Cementing date:

#### SLURRY

Slurry No.	No. of Sacks	Class	Additives	Volume (cu. ft.)	Height (ft.)
1					
2					
3					
Total					

### III. CASING CEMENTING DATA

Type of casing: ☐ Surface ☐ Intermediate ☐ Production ☐ Tapered production ☐ Multi-stage cement/DV tool ☐ Multiple parallel strings

Drilled hole size (in.):

Depth of drilled hole (ft.):

Est. % wash-out or hole enlargement:

Size of casing in O.D. (in.):

Casing weight (lbs/ft) and grade:

No. of centralizers used:

Tapered string drilled hole size (in.)

Tapered string depth of drilled hole (ft.)

Upper:

Lower:

Upper:

Lower:

Tapered string size of casing in O.D. (in.)

Tapered string casing weight (lbs/ft) and grade

Tapered string no. of centralizers used

Upper:

Lower:

Upper:

Lower:

Upper:

Lower:

Was cement circulated to ground surface (or bottom of cellar) outside casing? ☐ YES ☐ NO

Setting depth tool (ft.):

Hrs. waiting on cement before drill-out:

Calculated top of cement (ft.):

Cementing date:

#### SLURRY

Slurry No.	No. of Sacks	Class	Additives	Volume (cu. ft.)	Height (ft.)
1					
2					
3					
Total					

	PLUG #1	PLUG #2	PLUG #3	PLUG #4	PLUG #5	PLUG #6	PLUG #7
Cementing Date							
Size of hole or pipe (in.)							
Depth to bottom of tubing or drill pipe (ft.)							
Cement retainer setting depth (ft.)							
CIBP setting depth (ft.)							
Amount of cement on top of CIBP (ft.)							
Sacks of cement used							
Slurry volume pumped (cu. ft.)							
Calculated top of plug (ft.)							
Measured top of plug, if tagged (ft.)							
Slurry weight (lbs/gal)							
Class/type of cement							
Perforate and squeeze (YES/NO)							

## REMARKS

**CEMENTER'S CERTIFICATE:** I declare under penalties prescribed in Sec. 91.143, Texas Natural Resources Code, that I am authorized to make this certification, that the cementing of casing and/or the placing of cement plugs in this well as shown in the report was performed by me or under my supervision, and that the cementing data and facts presented on both sides of this form are true, correct, and complete, to the best of my knowledge. This certification covers cementing data only.

Elmer Buckelew/Cementer

Powerflex Services Inc.



Name and title of cementer's representative

Cementing Company

Signature

PO Box 666

Winters, TX 79567

325-754-2000

5-30-17

Address

City, State, Zip Code

Tel: Area Code

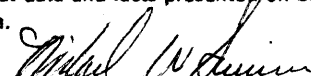
Number

Date: mo. day yr.

**OPERATOR'S CERTIFICATE:** I declare under penalties prescribed in Sec. 91.143, Texas Natural Resources Code, that I am authorized to make this certification, that I have knowledge of the well data and information presented in this report, and that data and facts presented on both sides of this form are true, correct, and complete, to the best of my knowledge. This certification covers all well data.

MICHAEL W. SWINSON

PRESIDENT



Typed or printed name of operator's representative

Title

Signature

PO Box 100

STANTON TX

79782

432 756-2902

7/11/17

Address

City, State, Zip Code

Tel: Area Code

Number

Date: mo. day yr.

## Instructions for Form W-15, Cementing Report

**NOTICE:** The Form W-15 must be submitted as an attachment to a Form G-1 (Gas Well Back Pressure Test, Completion or Recompletion Report, and Log), Form W-2 (Oil Well Potential Test, Completion or Recompletion Report, and Log), Form W-3 (Plugging Record), or Form W-4 (Application for Multiple Completion), any time cement is pumped in a wellbore.

- A. What to file:** An operator should file an original and one copy of the completed Form W-15 for each cementing company used on a well. The cementing of different casing strings on a well by one cementing company may be reported on one form.  
The Form W-15 should be filed with the Form W-3, Plugging Record, unless the Form W-3 is signed by the cementing company representative. When reporting dry holes, operators must complete Form W-15, in addition to Form W-3, to show any casing cemented in the hole.
- B. How to file:** An oil and gas completion report and Form W-15 may be filed online using the Commission's Online System (<https://webapps.rrc.texas.gov/security/login.do>) or a paper copy of the form may be mailed to the Commission in Austin (P.O. Box 12967, Austin, Texas 78711-2967).
- C. Surface casing:** An operator must set and cement sufficient surface casing to protect all usable-quality water strata, as defined by the Groundwater Advisory Unit in Austin. Sufficient cement shall be used to fill the annular space outside the casing from the shoe to the ground surface or to the bottom of the cellar. Before drilling a well, an operator must obtain a letter from the Groundwater Advisory Unit stating the protection depth. Surface casing should not be set deeper than 200 feet below the specified depth without prior approval from the Commission.  
To plug and abandon a well, operators must use only cementers approved by the Commission's Director of Field Operations in accordance with SWR 14 ([http://info.sos.state.tx.us/pls/pub/readtac\\$ext.TacPage?sl=R&app=9&p\\_dir=&p\\_rloc=&p\\_tloc=&p\\_ploc=&pg=1&p\\_tac=&ti=16&pt=1&ch=3&rl=14](http://info.sos.state.tx.us/pls/pub/readtac$ext.TacPage?sl=R&app=9&p_dir=&p_rloc=&p_tloc=&p_ploc=&pg=1&p_tac=&ti=16&pt=1&ch=3&rl=14)). Cementing companies, service companies, or operators can qualify as approved cementers by demonstrating that they are able to mix and pump cement in compliance with Commission rules and regulations.
- D. Estimated % wash-out:** If the estimated % wash-out is less than 20% (or 30% along the Gulf Coast), provide supporting documentation such as a caliper log to show how the estimated % wash-out was obtained.
- E. Multi-stage cement:** An operator must report the multi-stage cement shoe in II. Casing Cementing Data section by selecting the type of casing and Multi-stage cement shoe. The operator must report the multi-stage cement tool in III. Casing Cementing Data section by selecting the type of casing and Multi-stage cement/DV tool.
- F. Multiple parallel strings:** An operator should file the Form W-15 as an attachment to the Form W-4, Application for Multiple Completion. An operator may be required to submit multiple Form W-15s to show all data for multiple parallel strings.
- G. Slurry data:** If cement job exceeds three slurries, continue the list of slurries in the Slurry table in the subsequent Casing Cementing Data box.





# RAILROAD COMMISSION OF TEXAS

1701 N. Congress  
P.O. Box 12967  
Austin, Texas 78701-2967

Form W-15

Rev. 08/2014

Cementer: Fill in shaded areas.  
Operator: Fill in other items.

## CEMENTING REPORT

### OPERATOR INFORMATION

Operator Name: MWS Producing, INC Operator P-5 No.: 597379  
Cementer Name: Powerflex Services Inc. Cementer P-5 No.: 674987

### WELL INFORMATION

District No.: 7C County: Crockett  
Well No.: 1 API No.: 42-105-42384 Drilling Permit No.: 025315  
Lease Name: University 22 B Lease No.: N/A  
Field Name: FARMER SAN ANDRES Field No.: 20243500

### I. CASING CEMENTING DATA

Type of casing: ☐ Conductor ☐ Surface ☐ Intermediate ☐ Liner ☒ Production  
Drilled hole size (in.): 7 7/8 Depth of drilled hole (ft.): 2350 Est. % wash-out or hole enlargement: 30  
Size of casing in O.D. (in.): 4 1/2 Casing weight (lbs/ft) and grade: 11.6 J55 No. of centralizers used: 15  
Was cement circulated to ground surface (or bottom of cellar) outside casing? ☐ YES ☒ NO If no for surface casing, explain in Remarks. Setting depth shoe (ft.): 2325 Top of liner (ft.):  
Setting depth liner (ft.):  
Hrs. waiting on cement before drill-out: Calculated top of cement (ft.): Cementing date: 6-1-17

#### SLURRY

Slurry No.	No. of Sacks	Class	Additives	Volume (cu. ft.)	Height (ft.)
1	100	C	6% Gel, 1% CC, 1/4 # Floccle	188	825
2	200	C	3# Salt, 1/4# Floccle	264	1150
3					
Total	300			452	1984

### II. CASING CEMENTING DATA

Type of casing: ☐ Surface ☐ Intermediate ☐ Production ☐ Tapered production ☐ Multi-stage cement shoe ☐ Multiple parallel strings  
Drilled hole size (in.): Depth of drilled hole (ft.): Est. % wash-out or hole enlargement:  
Size of casing in O.D. (in.): Casing weight (lbs/ft) and grade: No. of centralizers used:  
Tapered string drilled hole size (in.) Tapered string depth of drilled hole (ft.)  
Upper: Lower: Upper: Lower:  
Tapered string size of casing in O.D. (in.) Tapered string casing weight (lbs/ft) and grade Tapered string no. of centralizers used  
Upper: Lower: Upper: Lower: Upper: Lower:  
Was cement circulated to ground surface (or bottom of cellar) outside casing? ☐ YES ☐ NO Setting depth shoe (ft.):  
Hrs. waiting on cement before drill-out: Calculated top of cement (ft.): Cementing date:

#### SLURRY

Slurry No.	No. of Sacks	Class	Additives	Volume (cu. ft.)	Height (ft.)
1					
2					
3					
Total					

### III. CASING CEMENTING DATA

Type of casing: ☐ Surface ☐ Intermediate ☐ Production ☐ Tapered production ☐ Multi-stage cement/DV tool ☐ Multiple parallel strings  
Drilled hole size (in.): Depth of drilled hole (ft.): Est. % wash-out or hole enlargement:  
Size of casing in O.D. (in.): Casing weight (lbs/ft) and grade: No. of centralizers used:  
Tapered string drilled hole size (in.) Tapered string depth of drilled hole (ft.)  
Upper: Lower: Upper: Lower:  
Tapered string size of casing in O.D. (in.) Tapered string casing weight (lbs/ft) and grade Tapered string no. of centralizers used  
Upper: Lower: Upper: Lower: Upper: Lower:  
Was cement circulated to ground surface (or bottom of cellar) outside casing? ☐ YES ☐ NO Setting depth tool (ft.):  
Hrs. waiting on cement before drill-out: Calculated top of cement (ft.): Cementing date:

#### SLURRY

Slurry No.	No. of Sacks	Class	Additives	Volume (cu. ft.)	Height (ft.)
1					
2					
3					
Total					

CEMENTING TO SQUEEZE, PLUG BACK OR PLUG AND ABANDON							
	PLUG #1	PLUG #2	PLUG #3	PLUG #4	PLUG #5	PLUG #6	PLUG #7
Cementing Date							
Size of hole or pipe (in.)							
Depth to bottom of tubing or drill pipe (ft.)							
Cement retainer setting depth (ft.)							
CIBP setting depth (ft.)							
Amount of cement on top of CIBP (ft.)							
Sacks of cement used							
Slurry volume pumped (cu. ft.)							
Calculated top of plug (ft.)							
Measured top of plug, if tagged (ft.)							
Slurry weight (lbs/gal)							
Class/type of cement							
Perforate and squeeze (YES/NO)							

#### REMARKS

**CEMENTER'S CERTIFICATE:** I declare under penalties prescribed in Sec. 91.143, Texas Natural Resources Code, that I am authorized to make this certification, that the cementing of casing and/or the placing of cement plugs in this well as shown in the report was performed by me or under my supervision, and that the cementing data and facts presented on both sides of this form are true, correct, and complete, to the best of my knowledge. This certification covers cementing data only.

**Johnny Stout/Cementer**

**Powerflex Services Inc.**

Signature

Name and title of cementer's representative

Cementing Company

**PO Box 666**

**Winters, TX 79567**

**325-754-2000**

**6-1-17**

Address

City, State, Zip Code

Tel: Area Code

Number

Date: mo. day yr.

**OPERATOR'S CERTIFICATE:** I declare under penalties prescribed in Sec. 91.143, Texas Natural Resources Code, that I am authorized to make this certification, that I have knowledge of the well data and information presented in this report, and that data and facts presented on both sides of this form are true, correct, and complete, to the best of my knowledge. This certification covers all well data.

**MICHAEL W. SWINSON**

**PRESIDENT**

Signature

Typed or printed name of operator's representative

Title

**PO BOX 100**

**STANTON**

**TX 79782**

**432-780-2902**

**7/11/2017**

Address

City, State, Zip Code

Tel: Area Code

Number

Date: mo. day yr.

### Instructions for Form W-15, Cementing Report

**NOTICE:** The Form W-15 must be submitted as an attachment to a Form G-1 (Gas Well Back Pressure Test, Completion or Recompletion Report, and Log), Form W-2 (Oil Well Potential Test, Completion or Recompletion Report, and Log), Form W-3 (Plugging Record), or Form W-4 (Application for Multiple Completion), any time cement is pumped in a wellbore.

- What to file:** An operator should file an original and one copy of the completed Form W-15 for each cementing company used on a well. The cementing of different casing strings on a well by one cementing company may be reported on one form. The Form W-15 should be filed with the Form W-3, Plugging Record, unless the Form W-3 is signed by the cementing company representative. When reporting dry holes, operators must complete Form W-15, in addition to Form W-3, to show any casing cemented in the hole.
- How to file:** An oil and gas completion report and Form W-15 may be filed online using the Commission's Online System (<https://webapps.rrc.texas.gov/security/login.do>) or a paper copy of the form may be mailed to the Commission in Austin (P.O. Box 12967, Austin, Texas 78711-2967).
- Surface casing:** An operator must set and cement sufficient surface casing to protect all usable-quality water strata, as defined by the Groundwater Advisory Unit in Austin. Sufficient cement shall be used to fill the annular space outside the casing from the shoe to the ground surface or to the bottom of the cellar. Before drilling a well, an operator must obtain a letter from the Groundwater Advisory Unit stating the protection depth. Surface casing should not be set deeper than 200 feet below the specified depth without prior approval from the Commission. To plug and abandon a well, operators must use only cementers approved by the Commission's Director of Field Operations in accordance with SWR 14 ([http://info.sos.state.tx.us/pls/pub/readtac\\$ext.TacPage?sl=R&app=9&p\\_dir=&p\\_rloc=&p\\_tloc=&p\\_ploc=&pg=1&p\\_tac=&ti=16&pt=1&ch=3&rl=14](http://info.sos.state.tx.us/pls/pub/readtac$ext.TacPage?sl=R&app=9&p_dir=&p_rloc=&p_tloc=&p_ploc=&pg=1&p_tac=&ti=16&pt=1&ch=3&rl=14)). Cementing companies, service companies, or operators can qualify as approved cementers by demonstrating that they are able to mix and pump cement in compliance with Commission rules and regulations.
- Estimated % wash-out:** If the estimated % wash-out is less than 20% (or 30% along the Gulf Coast), provide supporting documentation such as a caliper log to show how the estimated % wash-out was obtained.
- Multi-stage cement:** An operator must report the multi-stage cement shoe in II. Casing Cementing Data section by selecting the type of casing and Multi-stage cement shoe. The operator must report the multi-stage cement tool in III. Casing Cementing Data section by selecting the type of casing and Multi-stage cement/DV tool.
- Multiple parallel strings:** An operator should file the Form W-15 as an attachment to the Form W-4, Application for Multiple Completion. An operator may be required to submit multiple Form W-15s to show all data for multiple parallel strings.
- Slurry data:** If cement job exceeds three slurries, continue the list of slurries in the Slurry table in the subsequent Casing Cementing Data box.

**RAILROAD COMMISSION OF TEXAS  
OIL AND GAS DIVISION**

Form W-12  
(1-1-71)  
FOD1296

<b>INCLINATION REPORT</b> (One Copy Must Be Filed With Each Completion Report)		6. RRC District <p align="center"><b>7C</b></p>
1. FIELD NAME (as per RRC Records or Wildcat) <p align="center"><b>FARMER SAN ANAPOS</b></p>	2. LEASE NAME <p align="center"><b>University 22B</b></p>	7. RRC Lease Number. (Oil completions only) <p align="center"><b>NOT ASSIGNED</b></p>
3. OPERATOR <p align="center"><b>MWS Producing, Inc.</b></p>		8. Well Number <p align="center"><b>1</b></p>
4. ADDRESS <p align="center"><b>P. O. Box 100 Stanton, TX 79782</b></p>		9. RRC Identification Number (Gas completions only)
5. LOCATION (Section, Block, and Survey) <p align="center"><b>15 miles NW direction from Ozona</b></p>		10. County <p align="center"><b>CROCKETT</b></p>

**RECORD OF INCLINATION**

*11. Measured Depth (feet)	12. Course Length (Hundreds of feet)	*13. Angle of Inclination (Degrees)	14. Displacement per Hundred Feet (Sine of Angle x100)	15. Course Displacement (feet)	16. Accumulative Displacement (feet)
444	444	.50	.87	3.87	3.87
914	470	1.00	1.75	8.20	12.08
1227	313	1.00	1.75	5.46	17.54
1541	314	1.00	1.75	5.48	23.02
1763	222	1.00	1.75	3.87	26.89
2014	251	.25	.44	1.10	27.99
2350	336	.25	.44	1.47	29.46

If additional space is needed, use the reverse side of this form.

17. Is any information shown on the reverse side of this form? ☐ yes    ☒ no    XX no
18. Accumulative total displacement of well bore at total depth of 2350 feet = 29.46 feet.
- \*19. Inclination measurements were made in -    ☐ Tubing    ☐ Casing    ☐ Open hole    ☒ Drill Pipe
20. Distance from surface location of well to the nearest lease line ..... feet.
21. Minimum distance to lease line as prescribed by field rules ..... feet.
22. Was the subject well at any time intentionally deviated from the vertical in any manner whatsoever? No

(If the answer to the above question is "yes," attach written explanation of the circumstances.)

<p><b>INCLINATION DATA CERTIFICATION</b></p> <p>I declare under penalties prescribed in Sec. 91.143, Texas Natural Resources Code, that I am authorized to make this certification, that I have personal knowledge of the inclination data and facts placed on both sides of this form and that such data and facts are true, correct, and complete to the best of my knowledge. This certification covers all data as indicated by asterisks (*) by the item numbers on this form.</p> <div style="border-top: 1px solid black; margin-top: 10px;"> </div> <p>Signature of Authorized Representative <b>James R. Phillips, Member</b></p> <p>Name of Person and Title (type or print) <b>Blue Line Drilling Co., LLC</b></p> <p>Name of Company</p> <p>Telephone: <b>(325) 653-1891</b></p> <p align="center">Area Code</p>	<p><b>OPERATOR CERTIFICATION</b></p> <p>I declare under penalties prescribed in Sec. 91.143, Texas Natural Resources Code, that I am authorized to make this certification, that I have personal knowledge of all information presented in this report, and that all data presented on both sides of this form are true, correct, and complete to the best of my knowledge. This certification covers all data and information presented herein except information data as indicated by asterisks (*) by the item numbers on this form.</p> <div style="border-top: 1px solid black; margin-top: 10px;"> </div> <p>Signature of Authorized Representative <b>MICHAEL W. SWINSON</b></p> <p>Name of Person and Title (type or print) <b>MWS PRODUCING, INC</b></p> <p>Operator</p> <p>Telephone: <u>432 756 2902</u></p> <p align="center">Area Code</p>
--	---

Railroad Commission Use Only:

Approved By: \_\_\_\_\_ Title: \_\_\_\_\_ Date: \_\_\_\_\_

\* Designates items certified by company that conducted the inclination surveys.



Tracking No.: 176334

This facsimile L-1 was generated electronically from data submitted to the RRC.

## Instructions

**When to File Form L-1:**

- with Forms G-1, W-2, and GT-1 for new and deepened gas, oil, and geothermal wells
- with Form W-3 for plugged dry holes
- when sending in a log which was held under a request for confidentiality and the period for confidentiality has not yet expired.

**When is Form L-1 NOT required:**

- with Forms W-2, G-1, and GT-1 filed for injection wells, disposal wells, water supply wells, service wells, re-test wells, re-classifications, and plugbacks of oil, gas or geothermal wells
- with Form W-3 for plugging of other than a dry hole

**Where to File Form L-1:**

- with the appropriate Commission district office

**Filling out Form L-1:**

- Section I and the signature section must be filled out for all wells
- complete only the appropriate part of Section II

**Type of log required:**

- any wireline survey run for the purpose of obtaining lithology, porosity, or resistivity information
- no more than one such log is required but it must be of the subject well
- if such log is NOT run on the subject well, do NOT substitute any other type of log; just select Section II, Part A below

## SECTION I. IDENTIFICATION

Operator Name: MWS PRODUCING, INC.	District No. 7C	Completion Date: 06/27/2017
Field Name FARMER (SAN ANDRES)	Drilling Permit No. 825315	
Lease Name UNIVERSITY 22B	Lease/ID No. 19565	Well No. 1
County CROCKETT	API No. 42- 105-42384	

## SECTION II. LOG STATUS (Complete either A or B)

☐ A. BASIC ELECTRIC LOG NOT RUN☒ B. BASIC ELECTRIC LOG RUN. (Select one)

- ☐ 1. Confidentiality is requested and a copy of the header for each log that has been run on the well is attached.
- ☐ 2. Confidentiality already granted on basic electric log covering this interval (applicable to deepened wells only).
- ☐ 3. Basic electric log covering this interval already on file with Commission (applicable to deepened wells only).
- ☒ 4. Log attached to (select one):

☒ (a) Form L-1 (this form). If the company/lease name on log is different from that shown in Section I, please enter name on log here: \_\_\_\_\_

Check here if attached log is being submitted after being held confidential. ☐

☐ (b) Form P-7, Application for Discovery Allowable and New Field Designation.

☐ (c) Form W-4, Application for Multiple Completion:

Lease or ID No(s). \_\_\_\_\_

Well No(s). \_\_\_\_\_

Mike Swinson

Signature

MWS PRODUCING, INC.

Name (print)

Title

(432) 756-2902

Phone

07/11/2017

Date

-FOR RAILROAD COMMISSION USE ONLY-



# Gamma Ray / CCL Cement Bond Log

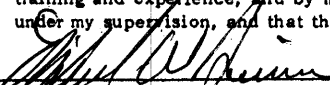
Company MWS Producing, Inc. Well University 22B #1 Field Farmer (San Andres) County Crockett State Texas		Company MWS Producing, Inc.					
		Well University 22B #1					
		Field Farmer (San Andres)					
		County Crockett State Texas					
		Location: API #: 42-105-42384					
Company MWS Producing, Inc. Well University 22B #1 Field Farmer (San Andres) County Crockett State Texas		368' FEL & 1583' FSL University Lands Survey SEC 22 BLK 47 ABS U486			Other Services		
		Permanent Datum Ground Level Elevation 2590'			Elevation		
		Log Measured From Keily Bushing			K.B. 2602'		
		Drilling Measured From Kelly Bushing			D.F.		
					G.L. 2590'		
Date		June 05, 2017					
Run Number		One					
Depth Driller		2350'					
Depth Logger		2283'					
Bottom Logged Interval		2283'					
Top Log Interval		1250'					
Open Hole Size		7.875"					
Type Fluid		KCL					
Density / Viscosity							
Max. Recorded Temp.							
Estimated Cement Top		1440'					
Time Well Ready		15:00					
Time Logger on Bottom		15:20					
Equipment Number		49					
Location		San Angelo					
Recorded By		Wesley Carrell					
Witnessed By		Mike Swinson					
Borehole Record				Tubing Record			
Run Number	Bit	From	To	Size	Weight	From	To
Casing Record		Size	Wgt/Ft	Top		Bottom	
Surface String							
Prot. String							
Production String		4.5"	11.60	Surface		2350'	
Liner							

Well Log

**RAILROAD COMMISSION OF TEXAS  
OIL AND GAS DIVISION  
CERTIFICATE OF COMPLIANCE STATEWIDE RULE 36**

FORM H-9  
12/12/77

FILE WITH  
DISTRICT OFFICE  
IN TRIPLICATE

1. Operator MWS PRODUCING, INC.			2. Operator Number (See Instruction 13) 597379			3. RRC Dist. 7C		
4. Street or P. O. Box No. POB 100			5. City STANTON			6. State TX		
7. Zip Code 79782			8. Name of Lease, Facility or Operation UNIVERSITY 22B			9. Field or Area Name FARMER (SAN ANDRES)		
10. County CROCKETT			11. General Operation Type - Circle One:					
A - Oil Field Production C - Pipeline or Gathering Sys. E - Drilling or Workover G - Combination (explain)			B - Gas Field Production D - Gasoline Plant F - Sweetening Unit H - Other (explain)			Other Explanation		
12. RRC ID# of Operation(s) to be Covered by This Certificate			Type ID Code (See Instruction 12)			Indicate if Filing for Storage Facility Only		
			YES			NO		
NEW WELL/ LEASE			1			✓		
13. Hydrogen Sulfide Concentration			5461 PPM			14. Maximum Escape Volume MCF/Day		
15. 100 PPM Radius of Exposure (ROE)			45 Ft.			16. 500 PPM Radius of Exposure (ROE)		
17. Operation is Existing New			<input type="checkbox"/> <input checked="" type="checkbox"/>			18. Modification Resulting in Certificate Change		
						<input type="checkbox"/> <input checked="" type="checkbox"/>		
19. Workover or Drilling Well with 100 PPM ROE Greater than 3000' feet on Rule 36 Certified Well/Lease						Yes No		
						<input type="checkbox"/> <input checked="" type="checkbox"/>		
20. Previous Certificate Number if Available (For Amended Certificates)								
21. The 100 PPM ROE includes any part of a public area except a public road						Yes No		
						<input type="checkbox"/> <input checked="" type="checkbox"/>		
22. The 500 PPM ROE includes any part of a public road						Yes No		
						<input type="checkbox"/> <input checked="" type="checkbox"/>		
23. Injection of fluid containing Hydrogen Sulfide (See Instruction 14)						Yes No		
						<input type="checkbox"/> <input checked="" type="checkbox"/>		
24. Date (or Depth) of Compliance with all applicable provisions of Rule 36			07, 11, 2017			Mo Day Year		
Depth of Compliance for Drilling Operation						Ft. from Surface		
25. Contingency Plan Location of Plan (See Instruction 15)						Has been prepared Yes No		
						<input type="checkbox"/> <input type="checkbox"/>		
26. Location of data used to prepare this certificate (See Instruction 15)								
MWS PRODUCING, INC. 1910 W. BUSINESS 20, STANTON, TX 79782								
<b>CERTIFICATE</b>								
I declare under penalties prescribed in Section 91.143, Natural Resources Code, that I am authorized to make this report, that this report was prepared by me or under my supervision, and that I am qualified to make this certification by virtue of my training and experience, and by my analysis of the operation being certified, or by the analysis of qualified person working under my supervision, and that the data and facts stated therein are true, correct, and complete, to the best of my knowledge.								
 Representative of Company			PRESIDENT			432 7562902		
			Title			7/11/17		
						Phone No. Date		

**RAILROAD COMMISSION USE ONLY**

This operation and the equipment used therein is approved on the basis of the above certification and is subject to further Commission audit for compliance with the required provisions of Statewide Rule 36. This approval may be cancelled if investigation determines that the operation does not comply with the provisions of Statewide Rule 36.

APPROVED BY: \_\_\_\_\_

DATE: \_\_\_\_\_

REMARKS:

CERTIFICATION NUMBER: \_\_\_\_\_

CERTIFICATE OF COMPLIANCE  
AND TRANSPORTATION AUTHORITY

P-4

This facsimile P-4 was generated electronically from data submitted to the RRC.  
A certification of the automated data is available in the RRC's Austin office.

Tracking No.: 176334

1. Field name exactly as shown on proration schedule <b>FARMER (SAN ANDRES)</b>		2. Lease name as shown on proration schedule <b>UNIVERSITY 22B</b>							
3. Current operator name exactly as shown on P-5 Organization Report <b>MWS PRODUCING, INC.</b>		4. Operator P-5 no. <b>597379</b>	5. Oil Lse/Gas ID no <b>19565</b>	6. County <b>CROCKETT</b>	7. RRC district <b>7C</b>				
8. Operator address including city, state, and zip code <b>PO BOX 100 STANTON, TX 79782</b>		9. Well no(s) (see instruction E) <b>1</b>							
		10. Classification <input checked="" type="checkbox"/> Oil <input type="checkbox"/> Gas <input type="checkbox"/> Other (see instruction A)			11. Effective Date <b>06/27/2017</b>				
12. Purpose of Filing. (Complete section a or b below.) (See instructions B and G) <b>a. Change of:</b> <input type="checkbox"/> operator <input type="checkbox"/> oil or condensate gatherer <input type="checkbox"/> gas gatherer <input type="checkbox"/> gas purchaser <input type="checkbox"/> gas purchaser system code <input type="checkbox"/> field name from _____ <input type="checkbox"/> lease name from _____ <b>OR</b> <b>b. New RRC Number for:</b> <input checked="" type="checkbox"/> oil lease <input type="checkbox"/> gas well <b>Due to:</b> <input checked="" type="checkbox"/> new completion or recompletion <input type="checkbox"/> reclass oil to gas <input type="checkbox"/> reclass gas to oil <input type="checkbox"/> other well (specify) _____ <input type="checkbox"/> consolidation, unitization, or subdivision (oil lease only)									
13. Authorized GAS WELL GAS or CASINGHEAD GAS Gatherer(s) and/or Purchaser(s). (See instruction G).									
Gatherer	Purchaser	Name of GAS WELL GAS or CASINGHEAD GAS Gatherer(s) or Purchaser(s) As Indicated in Columns to the Left (Attach an additional sheet in same format if more space is needed)			Purchaser's RRC Assigned System Code	Percent of Take	Full-well stream		
X	X	DAVIS GAS PROCESSING, INC.(202491)			0001	100.0			
14. Authorized OIL or CONDENSATE Gatherer(s). (See instruction G).									
Name of OIL or CONDENSATE Gatherer(s) - List Highest Volume Gatherer First (Attach an additional sheet in same format if more space is needed)						Percent of Take			
DORADO OIL COMPANY(223390)						100.0			
<b>RRC USE ONLY:</b> Reviewer's initials: <u>RRC Staff</u> Approval date: <u>08/10/2017</u>									
<b>15. PREVIOUS OPERATOR CERTIFICATION FOR CHANGE OF OPERATOR P-4 FILING.</b> Being the PREVIOUS OPERATOR, I certify that operating responsibility for the well(s) designated in this filing, located on the subject lease has been transferred in its entirety to the above named Current Operator. I understand, as Previous Operator, that designation of the above named operator as Current Operator is not effective until this certificate is approved by the Commission.  <table style="width:100%;"><tr><td style="width:50%; vertical-align: top;">Name of Previous Operator  Name (print)  Title</td><td style="width:50%; vertical-align: top;">Signature <input type="checkbox"/> <b>Authorized Employee of previous operator</b> <input type="checkbox"/> <b>Authorized agent of previous operator (see instruction G)</b>  Date  Phone with area code</td></tr></table>								Name of Previous Operator  Name (print)  Title	Signature <input type="checkbox"/> <b>Authorized Employee of previous operator</b> <input type="checkbox"/> <b>Authorized agent of previous operator (see instruction G)</b>  Date  Phone with area code
Name of Previous Operator  Name (print)  Title	Signature <input type="checkbox"/> <b>Authorized Employee of previous operator</b> <input type="checkbox"/> <b>Authorized agent of previous operator (see instruction G)</b>  Date  Phone with area code								
<b>16. CURRENT OPERATOR CERTIFICATION.</b> By signing this certificate as the Current Operator, I certify that all statements on this form are true and correct and I acknowledge responsibility for the regulatory compliance of the subject lease including plugging of well(s) pursuant to Rule 14. I further acknowledge that I assume responsibility for the physical operation, control, and proper plugging of each well designated in this filing. I also acknowledge that I will remain designated as the Current Operator until a new certificate designating a new Current Operator is approved by the Commission.  <table style="width:100%;"><tr><td style="width:50%; vertical-align: top;">MWS PRODUCING, INC.  Name (print)  Title <u>mwsprod@msn.com</u> E-mail Address (optional)</td><td style="width:50%; vertical-align: top;">Mike Swinson  Signature <input checked="" type="checkbox"/> <b>Authorized Employee of current operator</b> <input type="checkbox"/> <b>Authorized agent of current operator (see instruction G)</b>  Date <u>07/11/2017</u>  Phone with area code <u>(432) 756-2902</u></td></tr></table>								MWS PRODUCING, INC.  Name (print)  Title <u>mwsprod@msn.com</u> E-mail Address (optional)	Mike Swinson  Signature <input checked="" type="checkbox"/> <b>Authorized Employee of current operator</b> <input type="checkbox"/> <b>Authorized agent of current operator (see instruction G)</b>  Date <u>07/11/2017</u>  Phone with area code <u>(432) 756-2902</u>
MWS PRODUCING, INC.  Name (print)  Title <u>mwsprod@msn.com</u> E-mail Address (optional)	Mike Swinson  Signature <input checked="" type="checkbox"/> <b>Authorized Employee of current operator</b> <input type="checkbox"/> <b>Authorized agent of current operator (see instruction G)</b>  Date <u>07/11/2017</u>  Phone with area code <u>(432) 756-2902</u>								

## GROUNDWATER PROTECTION DETERMINATION

Form GW-2



## Groundwater Advisory Unit

**Date Issued:** 03 April 2017**GAU Number:** 168986**Attention:** MWS PRODUCING, INC.  
PO BOX 100  
STANTON, TX 79782**Operator No.:** 597379**API Number:**  
**County:** CROCKETT  
**Lease Name:** UNIVERSITY 22B  
**Lease Number:**  
**Well Number:** 1  
**Total Vertical Depth:** 2500  
**Latitude:** 31.001440  
**Longitude:** -101.355291  
**Datum:** NAD27**Purpose:** New Drill**Location:** Survey-UL; Block-47; Section-22

To protect usable-quality groundwater at this location, the Groundwater Advisory Unit of the Railroad Commission of Texas recommends:

The interval from the land surface to the base of the Santa Rosa, which is estimated to occur at a depth between 750 and 800 feet, must be protected.

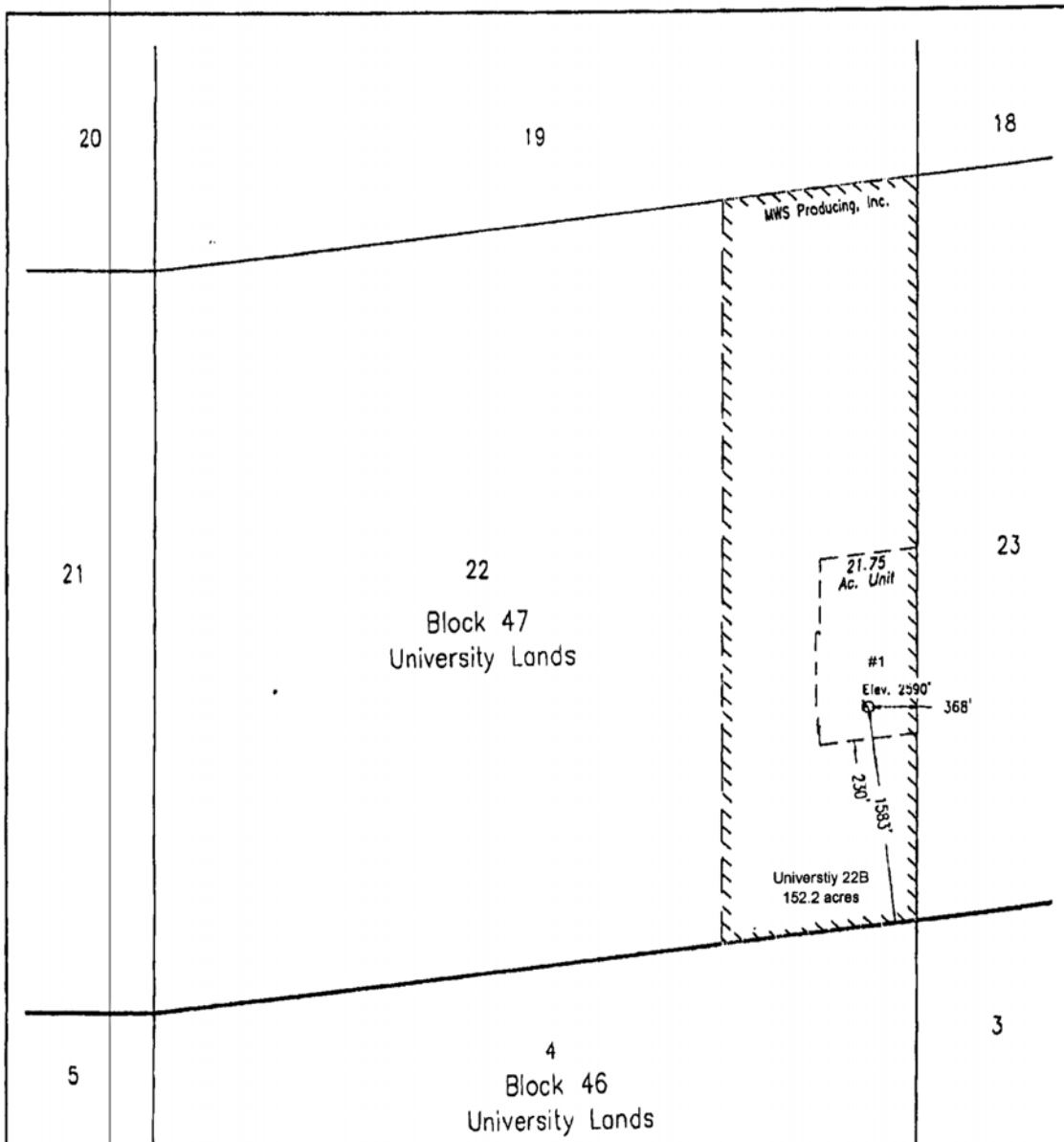
This recommendation is applicable to all wells within a radius of 1500 feet of this location.

Note: Unless stated otherwise, this recommendation is intended to apply only to the subject well and not for area-wide use. This recommendation is for normal drilling, production, and plugging operations only. It does not apply to saltwater disposal operation into a nonproductive zone (RRC Form W-14).

This determination is based on information provided when the application was submitted on 03/21/2017. If the location information has changed, you must contact the Groundwater Advisory Unit, and submit a new application if necessary. If you have questions, please contact us at 512-463-2741 or gau@rrc.texas.gov.

Groundwater Advisory Unit, Oil and Gas Division

Form GW-2 P.O. Box 12967 Austin, Texas 78771-2967 512-463-2741 Internet address: www.rrc.texas.gov  
Rev. 02/2014



*Michael L. Stanford*

Date Well Location Staked April 29, 2015

NAD 27 X = 1679827'

NAD 27 Y = 486906'

EMERGENCY RESPONSE LOCATOR

NAD 27 Lat. = 31°00'05.18" / 31.001440

NAD 27 Long. = -101°21'19.05" / -101.355292

1000 0 1000 2000 3000 Feet

This plot is for Texas Railroad Commission Permit Purposes Only and is NOT a boundary survey and is NOT to be used to convey or establish interests in real property.

BASIS OF BEARINGS is the Texas State Plane Coordinate System Central Zone NAD 27.

Application for Well No. 2  
14.5 Miles Southeast of Big Lake, Texas.

MWS Producing, Inc.  
University 22B #1 - 1583' FSL & 368' FEL  
Section 22, Block 47, University Lands Survey  
Crockett County, Texas

STANFORD SURVEYING COMPANY  
P.O. BOX 8490  
MIDLAND, TEXAS 79708-8490  
TBPLS Firm No. 10128400 432-699-5708

DRAWN BY Daniel Blair

Rev. 05-04-2015 ACP  
DATE 05-01-2015

SCALE 1" = 1000'

FILE NAME A-10195