



RAILROAD COMMISSION OF TEXAS

Form W-2

1701 N. Congress  
P.O. Box 12967  
Austin, Texas 78701-2967

Status: Approved  
Date: 07/14/2017  
Tracking No.: 172841

OIL WELL POTENTIAL TEST, COMPLETION OR RECOMPLETION REPORT, AND LOG

OPERATOR INFORMATION

Operator Name: SEM OPERATING COMPANY LLC Operator No.: 766370  
Operator Address: SUITE 1850 2050 WEST SAM HOUSTON PKWY S HOUSTON, TX 77042-0000

WELL INFORMATION

API No.: 42-105-42360 County: CROCKETT  
Well No.: 2101WC RRC District No.: 7C  
Lease Name: UNIVERSITY 40 Field Name: LIN (WOLFCAMP)  
RRC Lease No.: 17171 Field No.: 53613750  
Location: Section: 21, Block: 40, Survey: UL, Abstract:  
  
Latitude: 31.06871 Longitude: -101.16161  
This well is located 25.4 miles in a NORTH  
direction from OZONA,  
which is the nearest town in the county.

FILING INFORMATION

Purpose of filing: Initial Potential  
Type of completion: New Well  
Well Type: Producing Completion or Recompletion Date: 04/13/2017  

Type of Permit	Date	Permit No.
Permit to Drill, Plug Back, or Deepen	02/24/2017	823289
Rule 37 Exception		
Fluid Injection Permit		
O&G Waste Disposal Permit		
Other:		

COMPLETION INFORMATION

Spud date: 02/27/2017	Date of first production after rig released: 04/13/2017
Date plug back, deepening, recompletion, or drilling operation commenced: 02/27/2017	Date plug back, deepening, recompletion, or drilling operation ended: 03/21/2017
Number of producing wells on this lease in this field (reservoir) including this well: 35	Distance to nearest well in lease & reservoir (ft.): 200.0
Total number of acres in lease: 10195.37	Elevation (ft.): 2676 GR
Total depth TVD (ft.): 6904	Total depth MD (ft.): 15333
Plug back depth TVD (ft.): 6904	Plug back depth MD (ft.): 15333
Was directional survey made other than inclination (Form W-12)? Yes	Rotation time within surface casing (hours): 96.0
Recompletion or reclass? No	Is Cementing Affidavit (Form W-15) attached? Yes
Type(s) of electric or other log(s) run: Gamma Ray (MWD)	Multiple completion? No
Electric Log Other Description:	
Location of well, relative to nearest lease boundaries	Off Lease : No
of lease on which this well is located: 7234.0 Feet from the North Line and 5275.0 Feet from the East Line of the UNIVERSITY 40 Lease.	

FORMER FIELD (WITH RESERVOIR) & GAS ID OR OIL LEASE NO.

Field & Reservoir	Gas ID or Oil Lease No.	Well No.	Prior Service Type
-------------------	-------------------------	----------	--------------------

PACKET: N/A

W2:	N/A			
FOR NEW DRILL OR RE-ENTRY, SURFACE CASING DEPTH DETERMINED BY:				
GAU Groundwater Protection Determination		Depth (ft.):	725.0	Date: 02/15/2017
SWR 13 Exception		Depth (ft.):		

INITIAL POTENTIAL TEST DATA FOR NEW COMPLETION OR RECOMPLETION		
Date of test: 05/05/2017		Production method: Flowing
Number of hours tested: 24		Choke size: OPEN
Was swab used during this test?	No	Oil produced prior to test: 1091.00
PRODUCTION DURING TEST PERIOD:		
Oil (BBLS): 1126.00		Gas (MCF): 1516
Gas - Oil Ratio: 1346		Flowing Tubing Pressure: 550.00
Water (BBLS): 1383		
CALCULATED 24-HOUR RATE		
Oil (BBLS): 1126.0		Gas (MCF): 1516
Oil Gravity - API - 60.:	41.0	Casing Pressure: 0.00
Water (BBLS): 1383		

CASING RECORD											
Row	Type of Casing	Casing Size (in.)	Hole Size (in.)	Setting Depth (ft.)	Multi - Stage Depth (ft.)	Multi - Shoe Depth (ft.)	Cement Class	Cement Amount (sacks)	Slurry Volume (cu. ft.)	Top of Cement (ft.)	TOC Determined By
2	Surface	9 5/8	12 1/2	775			C	450	925.5	SURF ACE	Circulated to Surface
2	Conventional Production	5 1/2	8 3/4	15222			A	3100	4810.0	SURF ACE	Circulated to Surface

LINER RECORD									
Row	Liner Size (in.)	Hole Size (in.)	Liner Top (ft.)	Liner Bottom (ft.)	Cement Class	Cement Amount (sacks)	Slurry Volume (cu. ft.)	Top of Cement (ft.)	TOC Determined By
1						1			

TUBING RECORD			
Row	Size (in.)	Depth	Size (ft.)
1	2 7/8	6241	
			Packer Depth (ft.)/Type
			6222 / AS1X WL SET

PRODUCING/INJECTION/DISPOSAL INTERVAL			
Row	Open hole?	From (ft.)	To (ft.)
1	No	L1 7406	15171.0

ACID, FRACTURE, CEMENT SQUEEZE, CAST IRON BRIDGE PLUG, RETAINER, ETC.			
Was hydraulic fracturing treatment performed?		Yes	
Is well equipped with a downhole actuation sleeve?		No	
		If yes, actuation pressure (PSIG):	
Production casing test pressure (PSIG) prior to hydraulic fracturing treatment:		1500	
		Actual maximum pressure (PSIG) during hydraulic fracturing:	
		500	
Has the hydraulic fracturing fluid disclosure been reported to FracFocus disclosure registry (SWR29)?		Yes	
Row	Type of Operation	Amount and Kind of Material Used	Depth Interval (ft.)
1	Fracture	19,665,960 TOTAL SAND (67% 100 MESH AND 33% 40/70); 513,538 BBLs TOTAL FLUID; 117,052 GAL OF ACID	7406 15171

FORMATION RECORD

Formations	Encountered	Depth TVD (ft.)	Depth MD (ft.)	Is formation isolated?	Remarks
QUEEN	Yes	1077.0	1077.0	Yes	ISOLATED BY CEMENT
SAN ANDRES	Yes	1884.0	1884.0	Yes	ISOLATED BY CEMENT
LEONARD	Yes	3451.0	3451.0	Yes	ISOLATED BY CEMENT
WOLFCAMP	Yes	6747.0	6747.0	Yes	ISOLATED BY CEMENT
CANYON	No			No	DID NOT ENCOUNTER. TD IN WOLFCAMP.
STRAWN	No			No	DID NOT ENCOUNTER. TD IN WOLFCAMP.
DEVONIAN	No			No	DID NOT ENCOUNTER. TD IN WOLFCAMP.
ELLENBURGER	No			No	DID NOT ENCOUNTER. TD IN WOLFCAMP.

Do the producing interval of this well produce H2S with a concentration in excess of 100 ppm (SWR 36)?

No

Is the completion being downhole commingled (SWR 10)?

No

REMARKS

KOP: 6,270'

RRC REMARKS

PUBLIC COMMENTS:

[RRC Staff 2017-06-27 17:19:42.156] EDL=7816 feet, max acres=320, LIN (WOLFCAMP) oil well

CASING RECORD :

TUBING RECORD:

PRODUCING/INJECTION/DISPOSAL INTERVAL :

ACID, FRACTURE, CEMENT SQUEEZE, CAST IRON BRIDGE PLUG, RETAINER, ETC. :

POTENTIAL TEST DATA:

OPERATOR'S CERTIFICATION

Printed Name: Mandi Prince

Title: Regulatory Assistant

Telephone No.: (903) 705-0829

Date Certified: 05/23/2017



# RAILROAD COMMISSION OF TEXAS

1701 N. Congress  
P.O. Box 12967  
Austin, Texas 78701-2967

Form W-15

Rev. 08/2014

## CEMENTING REPORT

Cementor: Fill in shaded areas.  
Operator: Fill in other items.

OPERATOR INFORMATION					
Operator Name: SEQUITUR ENERGY <i>SEM Operating Company</i>			Operator P-5 No.: <i>766370</i>		
Cementor Name: C&J ENERGY			Cementor P-5 No.: 120532		
WELL INFORMATION					
District No.: <i>7C</i>		County: CROCKETT			
Well No.: #2101WC		API No.: <i>42-105-42360</i>		Drilling Permit No.: <i>823289</i>	
Lease Name: UNIVERSITY 40		Lease No.: <i>17171</i>			
Field Name: <i>LIN (Wolfcamp)</i>		Field No.: <i>53613750</i>			
I. CASING CEMENTING DATA					
Type of casing: <input type="checkbox"/> Conductor <input checked="" type="checkbox"/> Surface <input type="checkbox"/> Intermediate <input type="checkbox"/> Liner <input type="checkbox"/> Production					
Drilled hole size (in.): <i>12 1/2</i>		Depth of drilled hole (ft.): <i>775</i>		Est. % wash-out or hole enlargement: <i>20%</i>	
Size of casing in O.D. (in.): <i>9 5/8</i>		Casing weight (lbs/ft) and grade: <i>40 J-55</i>		No. of centralizers used: <i>10</i>	
Was cement circulated to ground surface (or bottom of cellar) outside casing? <input checked="" type="checkbox"/> YES <input type="checkbox"/> NO If no for surface casing, explain in Remarks.				Setting depth shoe (ft.): <i>775</i>	
				Top of liner (ft.):	
				Setting depth liner (ft.):	
Hrs. waiting on cement before drill-out: <i>120</i>		Calculated top of cement (ft.): <i>Surface</i>		Cementing date: 02/27/2017	
SLURRY					
Slurry No.	No. of Sacks	Class	Additives	Volume (cu. ft.)	Height (ft.)
1	300	C	See Remarks	726	2637
2	150	C	See Remarks	189.5	637
3					
Total	450			925.5	3274
II. CASING CEMENTING DATA					
Type of casing: <input type="checkbox"/> Surface <input type="checkbox"/> Intermediate <input type="checkbox"/> Production <input type="checkbox"/> Tapered production <input type="checkbox"/> Multi-stage cement shoe <input type="checkbox"/> Multiple parallel strings					
Drilled hole size (in.):		Depth of drilled hole (ft.):		Est. % wash-out or hole enlargement:	
Size of casing in O.D. (in.):		Casing weight (lbs/ft) and grade:		No. of centralizers used:	
Tapered string drilled hole size (in.)		Tapered string depth of drilled hole (ft.)			
Upper:		Lower:		Upper:	
Tapered string size of casing in O.D. (in.)		Tapered string casing weight (lbs/ft) and grade		Tapered string no. of centralizers used	
Upper:		Lower:		Upper:	
Was cement circulated to ground surface (or bottom of cellar) outside casing? <input type="checkbox"/> YES <input type="checkbox"/> NO				Setting depth shoe (ft.):	
Hrs. waiting on cement before drill-out:		Calculated top of cement (ft.):		Cementing date:	
SLURRY					
Slurry No.	No. of Sacks	Class	Additives	Volume (cu. ft.)	Height (ft.)
1					
2					
3					
Total					
III. CASING CEMENTING DATA					
Type of casing: <input type="checkbox"/> Surface <input type="checkbox"/> Intermediate <input type="checkbox"/> Production <input type="checkbox"/> Tapered production <input type="checkbox"/> Multi-stage cement/DV tool <input type="checkbox"/> Multiple parallel strings					
Drilled hole size (in.):		Depth of drilled hole (ft.):		Est. % wash-out or hole enlargement:	
Size of casing in O.D. (in.):		Casing weight (lbs/ft) and grade:		No. of centralizers used:	
Tapered string drilled hole size (in.)		Tapered string depth of drilled hole (ft.)			
Upper:		Lower:		Upper:	
Tapered string size of casing in O.D. (in.)		Tapered string casing weight (lbs/ft) and grade		Tapered string no. of centralizers used	
Upper:		Lower:		Upper:	
Was cement circulated to ground surface (or bottom of cellar) outside casing? <input type="checkbox"/> YES <input type="checkbox"/> NO				Setting depth tool (ft.):	
Hrs. waiting on cement before drill-out:		Calculated top of cement (ft.):		Cementing date:	
SLURRY					
Slurry No.	No. of Sacks	Class	Additives	Volume (cu. ft.)	Height (ft.)
1					
2					
3					
Total					



CEMENTING TO SQUEEZE, PLUG BACK OR PLUG AND ABANDON							
	PLUG #1	PLUG #2	PLUG #3	PLUG #4	PLUG #5	PLUG #6	PLUG #7
Cementing Date							
Size of hole or pipe (in.)							
Depth to bottom of tubing or drill pipe (ft.)							
Cement retainer setting depth (ft.)							
CIBP setting depth (ft.)							
Amount of cement on top of CIBP (ft.)							
Sacks of cement used							
Slurry volume pumped (cu. ft.)							
Calculated top of plug (ft.)							
Measured top of plug, if tagged (ft.)							
Slurry weight (lbs/gal)							
Class/type of cement							
Perforate and squeeze (YES/NO)							

REMARKS
Lead:CJ912+2%CJ110+2%CJ031+3pps CJ610 Tail:CJ912+1%CJ110+.25pps CJ600 (Circulated: 102 bbls Of Cement To Surface 236 SX)

CEMENTER'S CERTIFICATE: I declare under penalties prescribed in Sec. 91.143, Texas Natural Resources Code, that I am authorized to make this certification, that the cementing of casing and/or the placing of cement plugs in this well as shown in the report was performed by me or under my supervision, and that the cementing data and facts presented on both sides of this form are true, correct, and complete, to the best of my knowledge. This certification covers cementing data only.

**Balente Gonzales, Service Supervisor** **C&J ENERGY** *Balente Gonzales*  
 Name and title of cementer's representative Cementing Company Signature  
**8001 West Industrial Avenue** **Midland, TX 79706** **432-561-5822** **02/27/17**  
 Address City, State, Zip Code Tel: Area Code Number Date: mo. day yr.

OPERATOR'S CERTIFICATE: I declare under penalties prescribed in Sec. 91.143, Texas Natural Resources Code, that I am authorized to make this certification, that I have knowledge of the well data and information presented in this report, and that data and facts presented on both sides of this form are true, correct, and complete, to the best of my knowledge. This certification covers all well data.

*Mandi Prince* *Regulatory Asst.* *Mandi Prince*  
 Typed or printed name of operator's representative Title Signature  
**2050 W. Sam Houston Parkway** **Houston TX 77042** **903-705-0829** **05/02/2017**  
 Address Suite 1850 City, State, Zip Code Tel: Area Code Number Date: mo. day yr.

### Instructions for Form W-15, Cementing Report

NOTICE: The Form W-15 must be submitted as an attachment to a Form G-1 (Gas Well Back Pressure Test, Completion or Recompletion Report, and Log), Form W-2 (Oil Well Potential Test, Completion or Recompletion Report, and Log), Form W-3 (Plugging Record), or Form W-4 (Application for Multiple Completion), any time cement is pumped in a wellbore.

- What to file:** An operator should file an original and one copy of the completed Form W-15 for each cementing company used on a well. The cementing of different casing strings on a well by one cementing company may be reported on one form.  
The Form W-15 should be filed with the Form W-3, Plugging Record, unless the Form W-3 is signed by the cementing company representative. When reporting dry holes, operators must complete Form W-15, in addition to Form W-3, to show any casing cemented in the hole.
- How to file:** An oil and gas completion report and Form W-15 may be filed online using the Commission's Online System (<https://webapps.rrc.state.tx.us/security/login.do>) or a paper copy of the form may be mailed to the Commission in Austin (P.O. Box 12967, Austin, Texas 78711-2967).
- Surface casing:** An operator must set and cement sufficient surface casing to protect all usable-quality water strata, as defined by the Groundwater Advisory Unit in Austin. Sufficient cement shall be used to fill the annular space outside the casing from the shoe to the ground surface or to the bottom of the cellar. Before drilling a well, an operator must obtain a letter from the Groundwater Advisory Unit stating the protection depth. Surface casing should not be set deeper than 200 feet below the specified depth without prior approval from the Commission.  
To plug and abandon a well, operators must use only cementers approved by the Commission's Director of Field Operations in accordance with SWR 14 ([http://info.sos.state.tx.us/pls/pub/readtac\\$ext.TacPage?sl=R&app=9&p\\_dir=&p\\_rloc=&p\\_tloc=&p\\_ploc=&pg=1&p\\_tac=&tl=16&pt=1&ch=3&rl=14](http://info.sos.state.tx.us/pls/pub/readtac$ext.TacPage?sl=R&app=9&p_dir=&p_rloc=&p_tloc=&p_ploc=&pg=1&p_tac=&tl=16&pt=1&ch=3&rl=14)). Cementing companies, service companies, or operators can qualify as approved cementers by demonstrating that they are able to mix and pump cement in compliance with Commission rules and regulations.
- Estimated % wash-out:** If the estimated % wash-out is less than 20% (or 30% along the Gulf Coast), provide supporting documentation such as a caliper log to show how the estimated % wash-out was obtained.
- Multi-stage cement:** An operator must report the multi-stage cement shoe in II. Casing Cementing Data section by selecting the type of casing and Multi-stage cement shoe. The operator must report the multi-stage cement tool in III. Casing Cementing Data section by selecting the type of casing and Multi-stage cement/DV tool.
- Multiple parallel strings:** An operator should file the Form W-15 as an attachment to the Form W-4, Application for Multiple Completion. An operator may be required to submit multiple Form W-15s to show all data for multiple parallel strings.
- Slurry data:** If cement job exceeds three slurries, continue the list of slurries in the Slurry table in the subsequent Casing Cementing Data box.



## RAILROAD COMMISSION OF TEXAS

1701 N. Congress  
P.O. Box 12967  
Austin, Texas 78701-2967

Form W-15

Rev. 08/2014

Cementor: Fill in shaded areas.  
Operator: Fill in other items.

## CEMENTING REPORT

OPERATOR INFORMATION					
Operator Name: SEQUITUR ENERGY SEM Operating Company LP			Operator P-5 No.: 744370		
Cementor Name: C&J Well Services			Cementor P-5 No.: 120532		

WELL INFORMATION					
District No.: 7C		County: CROC			
Well No.: 2101 WC 0		API No.: 42-105-42360		Drilling Permit No.: 823289	
Lease Name: UNISERSITY 40		Lease No.: 17171			
Field Name: LIN Wolfcamp		Field No.: 53613750			

I. CASING CEMENTING DATA					
Type of casing: <input type="checkbox"/> Conductor <input type="checkbox"/> Surface <input type="checkbox"/> Intermediate <input type="checkbox"/> Liner <input checked="" type="checkbox"/> Production					
Drilled hole size (in.): 8 3/4		Depth of drilled hole (ft.): 15333		Est. % wash-out or hole enlargement: 20%	
Size of casing in O.D. (in.): 5 1/2		Casing weight (lbs/ft) and grade: 17 HCR410		No. of centralizers used: 5957	
Was cement circulated to ground surface (or bottom of cellar) outside casing? <input checked="" type="checkbox"/> YES <input type="checkbox"/> NO If no for surface casing, explain in Remarks.			Setting depth shoe (ft.): 15222		Top of liner (ft.):
					Setting depth liner (ft.):
Hrs. waiting on cement before drill-out:		Calculated top of cement (ft.): surface		Cementing date: 3-21-17	

SLURRY					
Slurry No.	No. of Sacks	Class	Additives	Volume (cu. ft.)	Height (ft.)
1	650	CLASS H	SEE REMARKS	1625	6416
2	2450	CLASS H	SEE REMARKS	3185	12478
3					
Total	3100			4810	18892

II. CASING CEMENTING DATA					
Type of casing: <input type="checkbox"/> Surface <input type="checkbox"/> Intermediate <input type="checkbox"/> Production <input type="checkbox"/> Tapered production <input type="checkbox"/> Multi-stage cement shoe <input type="checkbox"/> Multiple parallel strings					
Drilled hole size (in.):		Depth of drilled hole (ft.):		Est. % wash-out or hole enlargement:	
Size of casing in O.D. (in.):		Casing weight (lbs/ft) and grade:		No. of centralizers used:	
Tapered string drilled hole size (in.)		Tapered string depth of drilled hole (ft.)			
Upper:		Lower:		Upper:	
Tapered string size of casing in O.D. (in.)		Tapered string casing weight (lbs/ft) and grade		Tapered string no. of centralizers used	
Upper:		Lower:		Upper:	
Was cement circulated to ground surface (or bottom of cellar) outside casing? <input type="checkbox"/> YES <input type="checkbox"/> NO			Setting depth shoe (ft.):		
Hrs. waiting on cement before drill-out:		Calculated top of cement (ft.):		Cementing date:	

SLURRY					
Slurry No.	No. of Sacks	Class	Additives	Volume (cu. ft.)	Height (ft.)
1					
2					
3					
Total					

III. CASING CEMENTING DATA					
Type of casing: <input type="checkbox"/> Surface <input type="checkbox"/> Intermediate <input type="checkbox"/> Production <input type="checkbox"/> Tapered production <input type="checkbox"/> Multi-stage cement/DV tool <input type="checkbox"/> Multiple parallel strings					
Drilled hole size (in.):		Depth of drilled hole (ft.):		Est. % wash-out or hole enlargement:	
Size of casing in O.D. (in.):		Casing weight (lbs/ft) and grade:		No. of centralizers used:	
Tapered string drilled hole size (in.)		Tapered string depth of drilled hole (ft.)			
Upper:		Lower:		Upper:	
Tapered string size of casing in O.D. (in.)		Tapered string casing weight (lbs/ft) and grade		Tapered string no. of centralizers used	
Upper:		Lower:		Upper:	
Was cement circulated to ground surface (or bottom of cellar) outside casing? <input type="checkbox"/> YES <input type="checkbox"/> NO			Setting depth tool (ft.):		
Hrs. waiting on cement before drill-out:		Calculated top of cement (ft.):		Cementing date:	

SLURRY					
Slurry No.	No. of Sacks	Class	Additives	Volume (cu. ft.)	Height (ft.)
1					
2					
3					
Total					



CEMENTING TO SQUEEZE, PLUG BACK OR PLUG AND ABANDON							
	PLUG #1	PLUG #2	PLUG #3	PLUG #4	PLUG #5	PLUG #6	PLUG #7
Cementing Date							
Size of hole or pipe (in.)							
Depth to bottom of tubing or drill pipe (ft.)							
Cement retainer setting depth (ft.)							
CIBP setting depth (ft.)							
Amount of cement on top of CIBP (ft.)							
Sacks of cement used							
Slurry volume pumped (cu. ft.)							
Calculated top of plug (ft.)							
Measured top of plug, if tagged (ft.)							
Slurry weight (lbs/gal)							
Class/type of cement							
Perforate and squeeze (YES/NO)							

REMARKS
LEAD 50:50 CJ010:CJ916+CJ111+10% CJ020+.5% CJ210FTAIL 50:50 CJ010:CJ916+2% CJ020+.25% CJ511+.1% CJ725+.3% CJ210F CIRCULATE 191SKS TO THE PIT

CEMENTER'S CERTIFICATE: I declare under penalties prescribed in Sec. 91.143, Texas Natural Resources Code, that I am authorized to make this certification, that the cementing of casing and/or the placing of cement plugs in this well as shown in the report was performed by me or under my supervision, and that the cementing data and facts presented on both sides of this form are true, correct, and complete, to the best of my knowledge. This certification covers cementing data only.

**JAUQUAY WILBURN, Supervisor**

**C&J Well Services**

Name and title of cementer's representative

Cementing Company

8001 W. Industrial Ave, Midland, TX. 79706

432.561.5822

3/21/17

Address

City, State, Zip Code

Tel: Area Code

Number

Date: mo. day yr.

OPERATOR'S CERTIFICATE: I declare under penalties prescribed in Sec. 91.143, Texas Natural Resources Code, that I am authorized to make this certification, that I have knowledge of the well data and information presented in this report, and that data and facts presented on both sides of this form are true, correct, and complete, to the best of my knowledge. This certification covers all well data.

*Mandi Prince*

*Regulatory Asst.*

*Mandi Prince*

Typed or printed name of operator's representative

Title

Signature

2050 W. Sam Houston Parkway

Houston TX 77042

903-705-0029

05/02/2017

Address

*Suite 1850*

City, State, Zip Code

Tel: Area Code

Number

Date: mo. day yr.

### Instructions for Form W-15, Cementing Report

NOTICE: The Form W-15 must be submitted as an attachment to a Form G-1 (Gas Well Back Pressure Test, Completion or Recompletion Report, and Log), Form W-2 (Oil Well Potential Test, Completion or Recompletion Report, and Log), Form W-3 (Plugging Record), or Form W-4 (Application for Multiple Completion), any time cement is pumped in a wellbore.

- What to file:** An operator should file an original and one copy of the completed Form W-15 for each cementing company used on a well. The cementing of different casing strings on a well by one cementing company may be reported on one form.  
The Form W-15 should be filed with the Form W-3, Plugging Record, unless the Form W-3 is signed by the cementing company representative. When reporting dry holes, operators must complete Form W-15, in addition to Form W-3, to show any casing cemented in the hole.
- How to file:** An oil and gas completion report and Form W-15 may be filed online using the Commission's Online System (<https://webapps.rrc.state.tx.us/security/login.do>) or a paper copy of the form may be mailed to the Commission in Austin (P.O. Box 12967, Austin, Texas 78711-2967).
- Surface casing:** An operator must set and cement sufficient surface casing to protect all usable-quality water strata, as defined by the Groundwater Advisory Unit in Austin. Sufficient cement shall be used to fill the annular space outside the casing from the shoe to the ground surface or to the bottom of the cellar. Before drilling a well, an operator must obtain a letter from the Groundwater Advisory Unit stating the protection depth. Surface casing should not be set deeper than 200 feet below the specified depth without prior approval from the Commission.  
To plug and abandon a well, operators must use only cementers approved by the Commission's Director of Field Operations in accordance with SWR 14 ([http://info.sos.state.tx.us/pls/pub/readtac\\$ext.TacPage?sl=R&app=9&p\\_dir=&p\\_rloc=&p\\_tloc=&p\\_ploc=&pg=1&p\\_tac=&tl=16&pt=1&ch=3&rl=14](http://info.sos.state.tx.us/pls/pub/readtac$ext.TacPage?sl=R&app=9&p_dir=&p_rloc=&p_tloc=&p_ploc=&pg=1&p_tac=&tl=16&pt=1&ch=3&rl=14)). Cementing companies, service companies, or operators can qualify as approved cementers by demonstrating that they are able to mix and pump cement in compliance with Commission rules and regulations.
- Estimated % wash-out:** If the estimated % wash-out is less than 20% (or 30% along the Gulf Coast), provide supporting documentation such as a caliper log to show how the estimated % wash-out was obtained.
- Multi-stage cement:** An operator must report the multi-stage cement shoe in II. Casing Cementing Data section by selecting the type of casing and Multi-stage cement shoe. The operator must report the multi-stage cement tool in III. Casing Cementing Data section by selecting the type of casing and Multi-stage cement/DV tool.
- Multiple parallel strings:** An operator should file the Form W-15 as an attachment to the Form W-4, Application for Multiple Completion. An operator may be required to submit multiple Form W-15s to show all data for multiple parallel strings.
- Slurry data:** If cement job exceeds three slurries, continue the list of slurries in the Slurry table in the subsequent Casing Cementing Data box.

Tracking No.: 172841

This facsimile L-1 was generated electronically from data submitted to the RRC.

## Instructions

**When to File Form L-1:**

- with Forms G-1, W-2, and GT-1 for new and deepened gas, oil, and geothermal wells
- with Form W-3 for plugged dry holes
- when sending in a log which was held under a request for confidentiality and the period for confidentiality has not yet expired.

**When is Form L-1 NOT required:**

- with Forms W-2, G-1, and GT-1 filed for injection wells, disposal wells, water supply wells, service wells, re-test wells, re-classifications, and plugbacks of oil, gas or geothermal wells
- with Form W-3 for plugging of other than a dry hole

**Where to File Form L-1:**

- with the appropriate Commission district office

**Filling out Form L-1:**

- Section I and the signature section must be filled out for all wells
- complete only the appropriate part of Section II

**Type of log required:**

- any wireline survey run for the purpose of obtaining lithology, porosity, or resistivity information
- no more than one such log is required but it must be of the subject well
- if such log is NOT run on the subject well, do NOT substitute any other type of log; just select Section II, Part A below

## SECTION I. IDENTIFICATION

Operator Name: SEM OPERATING COMPANY LLC	District No. 7C	Completion Date: 04/13/2017
Field Name LIN (WOLFCAMP)	Drilling Permit No. 823289	
Lease Name UNIVERSITY 40	Lease/ID No. 17171	Well No. 2101WC
County CROCKETT	API No. 42- 105-42360	

## SECTION II. LOG STATUS (Complete either A or B)

☒ A. BASIC ELECTRIC LOG NOT RUN☐ B. BASIC ELECTRIC LOG RUN. (Select one)

- ☐ 1. Confidentiality is requested and a copy of the header for each log that has been run on the well is attached.
- ☐ 2. Confidentiality already granted on basic electric log covering this interval (applicable to deepened wells only).
- ☐ 3. Basic electric log covering this interval already on file with Commission (applicable to deepened wells only).
- ☐ 4. Log attached to (select one):

☐ (a) Form L-1 (this form). If the company/lease name on log is different from that shown in Section I, please enter name on log here: \_\_\_\_\_

Check here if attached log is being submitted after being held confidential. ☐

☐ (b) Form P-7, Application for Discovery Allowable and New Field Designation.

☐ (c) Form W-4, Application for Multiple Completion:

Lease or ID No(s). \_\_\_\_\_

Well No(s). \_\_\_\_\_

Mandi Prince

Signature

SEM OPERATING COMPANY LLC

Name (print)

Regulatory Assistant

Title

(903) 705-0829

Phone

05/04/2017

Date

-FOR RAILROAD COMMISSION USE ONLY-



## 1 INCH MD GAMMA RAY LOG

(Scale: 1":100' (100'))

Company: SEQUITUR ENERGY

State: TEXAS

Well: UNIVERSITY 40 2101WC

County: CROCKETT

Field: WOLFCAMP

Country: USA

Well ID: 42-105-42360

Job Number: LTX5135017

Location: CROCKETT COUNTY, TEXAS

Elev KB: 2,676'+26'=2,702'

Operator 1: B. BAGBY

Elev DF: 26'

Operator 2: B. POTEET

Elev GL: 2,676'

Comment 1: LAT:31° 4' 7.370 N / LONG: 101° 9' 41.804 W - X: 510867.6 / Y: 1740686.16

Comment 2: OIL BASED MUD DENSITY (PPG): 8.6 / FUNNEL VIS (SEC/QT):69

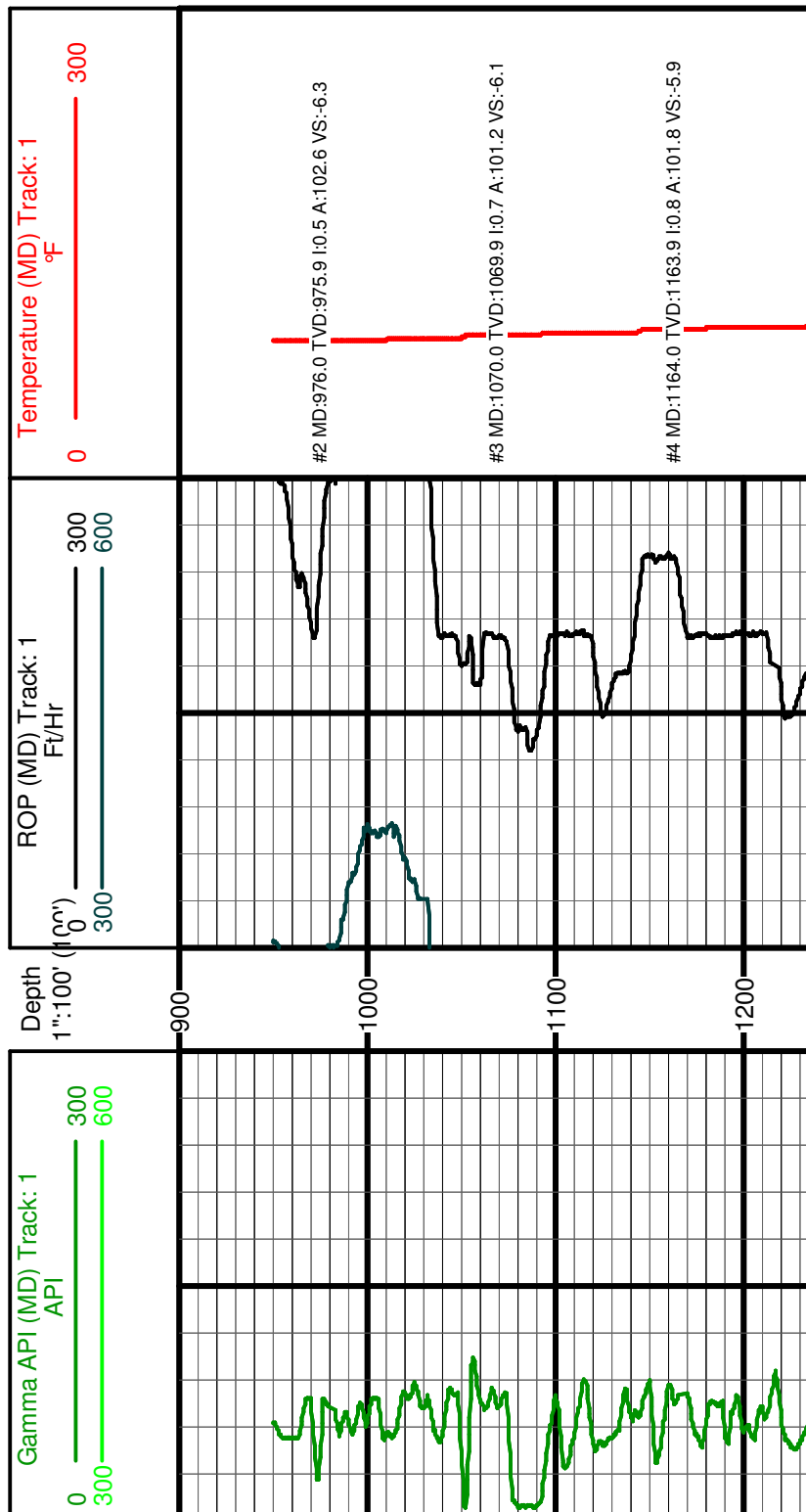
Comment 3: FLOW LINE TEMP (DEG F):124 / HTHP FILTRATE (CM/30MIN): 9.2

Comment 4: MAX TEMPERATURE (DEG F): 182

Comment 5: 1927 TX CENTRAL 1402 / GAMMA RAY DEPTHS ARE IN REFERENCE TO KB ELEVATION

Hole Data			Casing Record		
Size	From	To	Size	From	To
12 1/4"	0'	780'	9 5/8"	0'	780'
8 3/4"	780'	15,333'			

Tool Run Data	Run #1	Run #2	Run #3	Run #4	Run #5
Tool S/N	G2577	G2577	G2577	G2599	
Cal Factor	4.65	4.65	4.65	4.65	
Gamma Offset	49'	38'	43'	35'	
Start Depth	950'	6,221'	6,489'	7,138'	
Start Date	03/06/2017	03/09/2017	03/11/2017	03/12/2017	
Start Time	09:17	20:00	01:58	19:30	
End Depth	6,221'	6,489'	7,138'	15,298'	
End Date	03/09/2017	03/10/2017	03/12/2017	03/18/2017	
End Time	03:45	11:02	00:19	13:45	



1. Field name exactly as shown on proration schedule <b>LIN (WOLFCAMP)</b>		2. Lease name as shown on proration schedule <b>UNIVERSITY 40</b>			
3. Current operator name exactly as shown on P-5 Organization Report <b>SEM OPERATING COMPANY LLC</b>		4. Operator P-5 no. <b>766370</b>	5. Oil Lse/Gas ID no <b>17171</b>	6. County <b>CROCKETT</b>	
8. Operator address including city, state, and zip code <b>SUITE 1850 2050 WEST SAM HOUSTON PKWY S HOUSTON, TX 77042</b>		9. Well no(s) ( <i>see instruction E</i> ) <b>2101WC</b>			
		10. Classification <input checked="" type="checkbox"/> Oil <input type="checkbox"/> Gas <input type="checkbox"/> Other ( <i>see instruction A</i> )		11. Effective Date <b>04/13/2017</b>	
12. Purpose of Filing. (Complete section a or b below.) ( <i>See instructions B and G</i> )					
<b>a. Change of:</b> <input type="checkbox"/> operator <input type="checkbox"/> oil or condensate gatherer <input type="checkbox"/> gas gatherer <input type="checkbox"/> gas purchaser <input type="checkbox"/> gas purchaser system code <input type="checkbox"/> field name from _____ <input type="checkbox"/> lease name from _____					
<b>-- OR --</b>					
<b>b. New RRC Number for:</b> <input checked="" type="checkbox"/> oil lease <input type="checkbox"/> gas well <b>Due to:</b> <input checked="" type="checkbox"/> new completion or recompletion <input type="checkbox"/> reclass oil to gas <input type="checkbox"/> reclass gas to oil <input type="checkbox"/> other well (specify) _____ <input type="checkbox"/> consolidation, unitization, or subdivision (oil lease only)					
13. Authorized GAS WELL GAS or CASINGHEAD GAS Gatherer(s) and/or Purchaser(s). ( <i>See instruction G</i> ).					
Gatherer	Purchaser	Name of GAS WELL GAS or CASINGHEAD GAS Gatherer(s) or Purchaser(s) As Indicated in Columns to the Left (Attach an additional sheet in same format if more space is needed)	Purchaser's RRC Assigned System Code	Percent of Take	Full-well stream
X	X	DCP OPERATING COMPANY, LP(195959)	0001	43.0	
X	X	LUCID ENERGY WESTEX, LLC(511943)	0005	14.0	
X	X	WTG GAS PROCESSING, L.P.(945227)	0001	43.0	
14. Authorized OIL or CONDENSATE Gatherer(s). ( <i>See instruction G</i> ).					
Name of OIL or CONDENSATE Gatherer(s) - List Highest Volume Gatherer First (Attach an additional sheet in same format if more space is needed)					Percent of Take
PLAINS MARKETING, L.P.(667883)					100.0
<b>RRC USE ONLY:</b> Reviewer's initials: <u>RRC Staff</u> Approval date: <u>07/14/2017</u>					
<b>15. PREVIOUS OPERATOR CERTIFICATION FOR CHANGE OF OPERATOR P-4 FILING.</b> Being the PREVIOUS OPERATOR, I certify that operating responsibility for the well(s) designated in this filing, located on the subject lease has been transferred in its entirety to the above named Current Operator. I understand, as Previous Operator, that designation of the above named operator as Current Operator is not effective until this certificate is approved by the Commission.					
Name of Previous Operator _____			Signature _____		
Name (print) _____			<input type="checkbox"/> <b>Authorized Employee of previous operator</b> <input type="checkbox"/> <b>Authorized agent of previous operator</b> ( <i>see instruction G</i> )		
Title _____			Date _____ Phone with area code _____		
<b>16. CURRENT OPERATOR CERTIFICATION.</b> By signing this certificate as the Current Operator, I certify that all statements on this form are true and correct and I acknowledge responsibility for the regulatory compliance of the subject lease including plugging of well(s) pursuant to Rule 14. I further acknowledge that I assume responsibility for the physical operation, control, and proper plugging of each well designated in this filing. I also acknowledge that I will remain designated as the Current Operator until a new certificate designating a new Current Operator is approved by the Commission.					
SEM OPERATING COMPANY LLC			Mandi Prince		
Name (print) Regulatory Assistant			Signature <input checked="" type="checkbox"/> <b>Authorized Employee of current operator</b> <input type="checkbox"/> <b>Authorized agent of current operator</b> ( <i>see instruction G</i> )		
Title mprince@sequitirenergy.com			Date 05/03/2017                      Phone with area code (903) 705-0829		
E-mail Address (optional)					

STATEMENT OF PRODUCTIVITY OF ACREAGE  
ASSIGNED TO PRORATION UNITS

Form P-15

Tracking No.: 172841

This facsimile P-15 was generated electronically  
from data submitted to the RRC.

The undersigned states that he is authorized to make this statement; that he has knowledge of the facts concerning the SEM OPERATING COMPANY LLC ,

OPERATOR

UNIVERSITY 40

LEASE

No. 2101WC

WELL

; that such well is

completed in the LIN (WOLFCAMP) Field, CROCKETT County,

Texas and that the acreage claimed, and assigned to such well for proration purposes as authorized by special rule and as shown on the attached certified plat embraces \_\_\_\_\_

40.0 acres which can reasonably be considered to be productive of hydrocarbons.

- CERTIFICATE -

*I declare under penalties prescribed in Sec. 91.143, Texas Natural Resources Code, that I am authorized to make this report, that this report was prepared by me or under my supervision and direction, and that data and facts stated therein are true, correct, and complete, to the best of my knowledge,*

Date 05/03/2017 Signature Mandi Prince

Telephone (903) 705-0829 Title Regulatory Assistant  
AREA CODE





## GROUNDWATER PROTECTION DETERMINATION

Form GW-2

## Groundwater Advisory Unit

**Date Issued:** 15 February 2017**GAU Number:** 167470**Attention:** SEM OPERATING COMPANY  
SUITE 1850  
HOUSTON, TX 77042**Operator No.:** 766370**API Number:**  
**County:** CROCKETT  
**Lease Name:** UNIVERSITY 40  
**Lease Number:**  
**Well Number:** 2101WC  
**Total Vertical Depth:** 7500  
**Latitude:** 31.068714  
**Longitude:** -101.161612  
**Datum:** NAD27**Purpose:** New Drill**Location:** Survey-UL; Abstract-U311; Block-40; Section-21

To protect usable-quality groundwater at this location, the Groundwater Advisory Unit of the Railroad Commission of Texas recommends:

The interval from the land surface to 20 feet below the base of the Cretaceous-age beds must be protected. The base of the Cretaceous is estimated to occur at a depth of 725 feet.

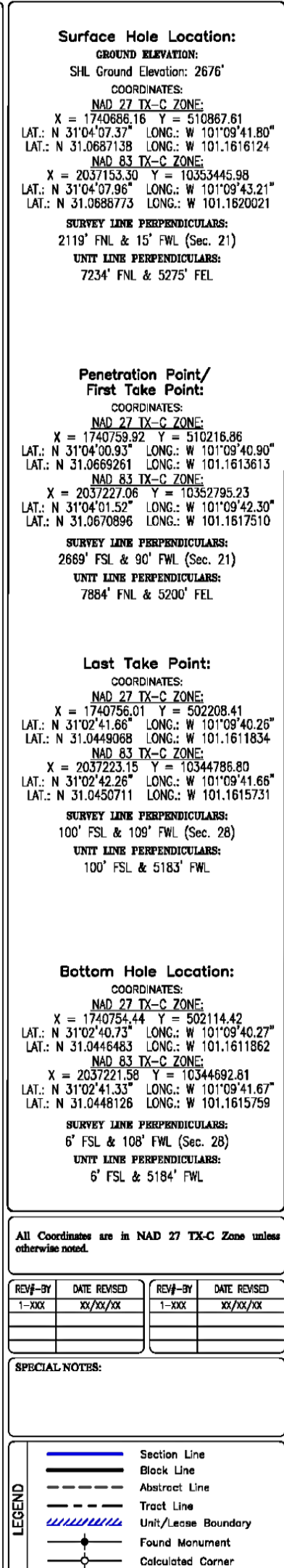
This recommendation is applicable to all wells within a radius of 3500 feet of this location.

Note: Unless stated otherwise, this recommendation is intended to apply only to the subject well and not for area-wide use. This recommendation is for normal drilling, production, and plugging operations only. It does not apply to saltwater disposal operation into a nonproductive zone (RRC Form W-14).

This determination is based on information provided when the application was submitted on 02/14/2017. If the location information has changed, you must contact the Groundwater Advisory Unit, and submit a new application if necessary. If you have questions, please contact us at 512-463-2741 or gau@rrc.texas.gov.

Groundwater Advisory Unit, Oil and Gas Division

Form GW-2 P.O. Box 12967 Austin, Texas 78771-2967 512-463-2741 Internet address: www.rrc.texas.gov  
Rev. 02/2014



<p style="text-align: center;">LOCATION DESCRIPTION:</p> <p style="text-align: center;">SHL/PP/FTP: SECTION 21, BLOCK 40, UNIVERSITY LANDS SURVEY LTP/BHL: SECTION 28, BLOCK 40, UNIVERSITY LANDS SURVEY CROCKETT COUNTY, TEXAS</p>		
Scale: 1" = 1000'	Surveyed: 01-25-2017	ORIGINAL DOC. SIZE: 11"x17"
COGO: 518-124590		Drawn By: MR; 05/03/2017