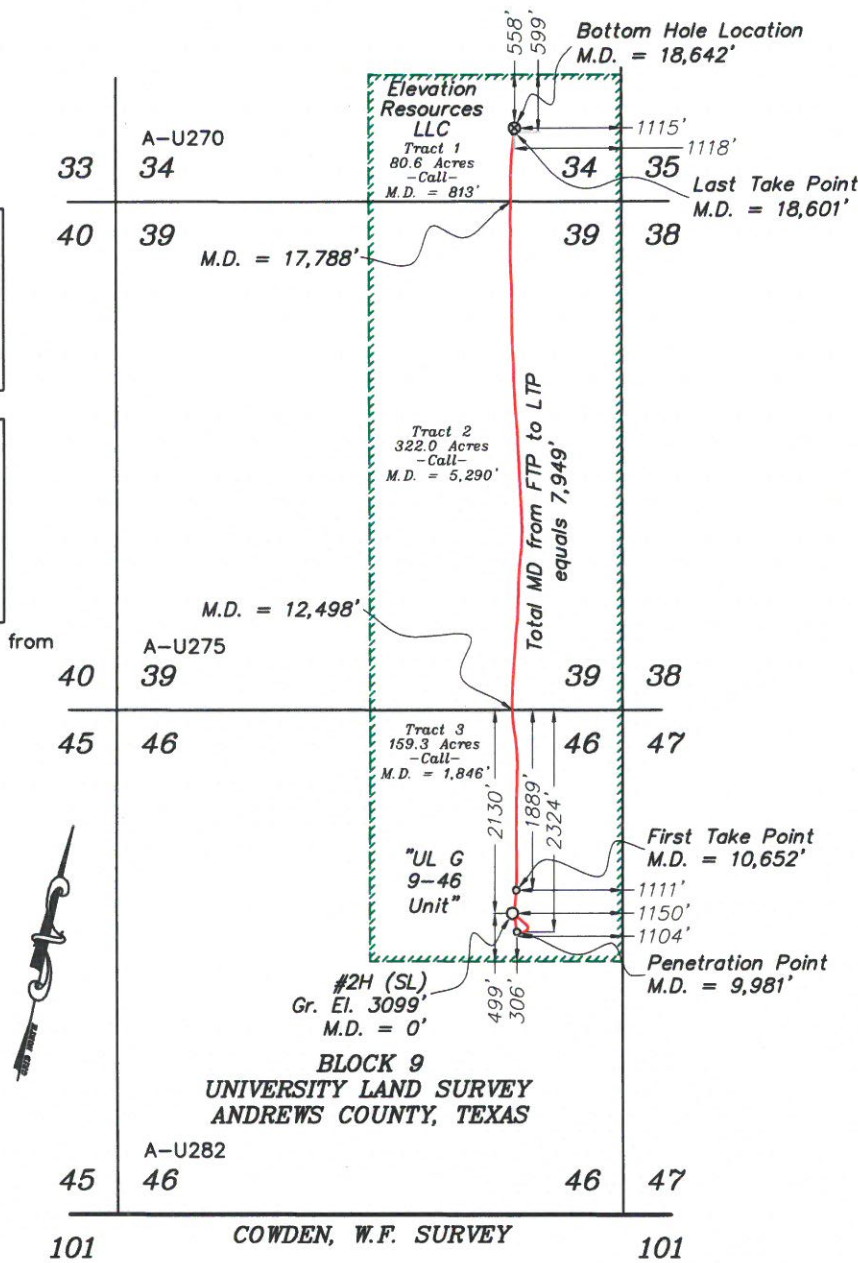


UL G 9-46 Unit Acreage Allocation Table	
Tract 1	80.6 Acres
Tract 2	322.0 Acres
Tract 3	159.3 Acres
Total	561.9 Acres

UL G 9-46 Unit Measured Depth Allocation Table*	
Tract 1	813 M.D.
Tract 2	5,290 M.D.
Tract 3	1,846 M.D.
Total	7,949 M.D.

*Note: Allocations are measured from First Take Point to Last Take Point

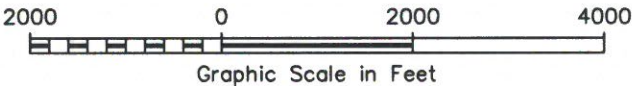


	State Plane Coordinate		Geodetic (D.M.S.)		Geodetic (D.D.)	
Surface Location	X = 436,321.06	Y = 204,722.68	Lat = 32°07'33.62" N	Long = 102°33'09.40" W	Lat = 32.12600530° N	Long = 102.55261013° W
Penetration Point	X = 436,408.60	Y = 204,543.35	Lat = 32°07'31.89" N	Long = 102°33'08.28" W	Lat = 32.12552449° N	Long = 102.55229988° W
First Take Point	X = 436,307.56	Y = 204,966.59	Lat = 32°07'36.02" N	Long = 102°33'09.69" W	Lat = 32.12667320° N	Long = 102.55269159° W
Last Take Point	X = 434,576.68	Y = 212,707.34	Lat = 32°08'51.71" N	Long = 102°33'34.13" W	Lat = 32.14769733° N	Long = 102.55947953° W
Bottom Hole Location	X = 434,571.25	Y = 212,747.98	Lat = 32°08'52.11" N	Long = 102°33'34.21" W	Lat = 32.14780818° N	Long = 102.55950337° W

The UL G 9-46 Unit #2H is located approximately 13.0 miles South of Andrews, Texas.

Downhole Path based on Survey Report provided by VON Directional, LLC dated May 11, 2017.

Prepared From Survey Dated: January 18, 2017



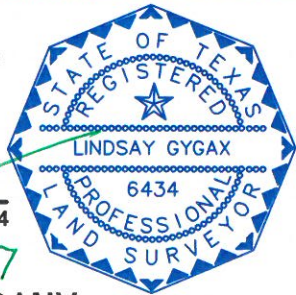
NOTE:
1) Plane Coordinates shown hereon are Lambert Grid and Conform to the "Texas Coordinate System", Texas North Central Zone, North American Datum of 1927, unless otherwise noted. Scale factor is 1.000169588.
2) Geodetic Coordinate shown hereon references the North American Datum of 1927, unless otherwise noted.
3) This plat is provided only for filing purposes with the Texas Railroad Commission and should not be construed as a boundary survey.
4) Measured Depth allocation is approximate and based on downhole report and take points as provided by client

Legend

- Denotes Downhole Directional Well Path
- Denotes Unit Boundary
- Denotes Tract Line
- - Denotes Surface Well Location
- - Denotes Take Points
- ⊗ - Denotes Bottom Hole Location

CERTIFICATION:
I hereby certify that this plat was made from notes taken in the field in a bona fide survey made under my supervision.

Lindsay Gygax
Texas R.P.L.S. No. 6434
07-05-17



WEST COMPANY
Land Surveyors ■ Civil Engineers
110 W. Louisiana Ave., Suite 110, Midland, Texas 79701
(432) 687-0865 - FAX (432) 687-0868
FIRM Registration Number: 100682-00



**UL G 9-46 UNIT #2H
DOWNHOLE REPORT**
Crossing
Sections 46 and 39, Block 9
All in University Lands Survey
Andrews County, Texas

Scale: 1"= 2000'	W.O.: 2017-0037-1
Surveyed: 01/18/17	Drawn By: SC
File: J:\2017\2017-0037-1\2017-0037-1 UL G 9-46 2H As-Drilled.dwg	