



XTO

SURVEY REPORT

FULLERTON CLEARFORK UNIT #8122

RENEGADE CRANE TRUCK

5/11/2017



The **Ultimate Partner** In Wellbore Placement

CUSTOMER XTO
PROJECT Fullerton Clearfork Unit #8122
FIELD Fullerton Clearfork Unit #8122

SDI JOB NO. OP.001283
SDI DISTRICT Midland
SDI KIT/UNIT

SITE INFORMATION

Site Name Fullerton Clearfork Unit #8122
Lat/Long 32.38052° N, 102.79978° W
Northing 995,537.69 ft
Easting 1,238,451.29 ft

Section
Township
Range

MAP INFORMATION

North Reference Grid North
Grid Correction 2.89 deg
System US State Plane 1927
Datum North American Datum 1927 (Clarke 1866)
Map Zone Texas North Central: 4202



WELL INFORMATION

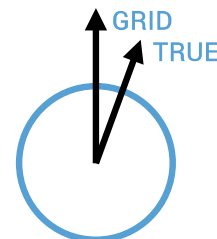
Lat/Long 32.8052° N, 102.79978° W
Northing 995,537.69 ft
Easting 1,238,451.29 ft
UWI 42-003-47441

DEPTH AND ELEVATION REFERENCE

Ground Level 3182 ft above Mean Sea Level
Reference Datum RKB
Reference Height 13 ft above G.L.
Reference Elevation 3195 ft

VERTICAL SECTION REFERENCE

+N/-S 0 ft
+E/-W 0 ft
Proposal Direction 348.81°
Calculation Method Minimum Curvature



LOCAL GRAVITY REFERENCE INFORMATION

Local Gravity 998.571 mG [computed]
True to Grid add 2.89°

WELL NOTES

Keeper Gyro Wireline Survey with Renegade Crane Truck in 5 1/2 Casing to 7300 ft

OPERATORS

Jeffrey Loyd

SDI Operator Name (Printed)

SIGNATURE

DATE

MD	INC	AZIM	TVD	VS	+N/-S	+E/-W	DLS	CLOSURE DIST	CLOSURE DIR
ft	deg	deg	ft	ft	ft	ft	°/100ft	ft	deg
0.00	0.00	0.00	0.00	0.00	0.00	0.00	Invalid	0.00	0.00
97.21	0.18	129.64	97.21	-0.12	-0.10	0.12	0.18	0.15	129.64
100.00	0.17	131.91	100.00	-0.12	-0.10	0.12	0.29	0.16	129.70
125.00	0.15	152.87	125.00	-0.19	-0.16	0.17	0.25	0.23	133.40
150.00	0.17	154.51	150.00	-0.26	-0.22	0.20	0.07	0.30	138.20
175.00	0.22	132.11	175.00	-0.33	-0.29	0.25	0.37	0.38	139.01
200.00	0.23	134.07	200.00	-0.41	-0.36	0.32	0.03	0.48	137.80
225.00	0.16	106.86	225.00	-0.47	-0.40	0.39	0.46	0.56	135.68
250.00	0.07	92.10	250.00	-0.49	-0.41	0.44	0.37	0.60	133.14
275.00	0.05	101.11	275.00	-0.49	-0.41	0.46	0.09	0.62	131.74
300.00	0.02	62.21	300.00	-0.50	-0.41	0.48	0.14	0.63	130.90
325.00	0.02	203.35	325.00	-0.50	-0.41	0.48	0.14	0.63	130.87
350.00	0.08	191.14	350.00	-0.52	-0.44	0.47	0.26	0.64	132.56
375.00	0.08	170.23	375.00	-0.55	-0.47	0.47	0.12	0.67	134.75
400.00	0.07	124.11	400.00	-0.58	-0.49	0.49	0.23	0.70	135.30
425.00	0.04	72.11	425.00	-0.59	-0.50	0.51	0.23	0.72	134.37
450.00	0.12	30.37	450.00	-0.57	-0.47	0.53	0.38	0.71	131.58
475.00	0.01	27.03	475.00	-0.55	-0.45	0.55	0.44	0.71	129.19
500.00	0.03	192.01	500.00	-0.55	-0.45	0.55	0.17	0.71	129.41
525.00	0.08	70.43	525.00	-0.55	-0.45	0.56	0.39	0.72	128.66
550.00	0.13	60.50	550.00	-0.54	-0.43	0.61	0.19	0.74	125.55
575.00	0.12	25.69	575.00	-0.51	-0.40	0.64	0.29	0.75	121.73
600.00	0.02	294.28	600.00	-0.49	-0.37	0.65	0.48	0.75	119.80
625.00	0.03	74.68	625.00	-0.49	-0.37	0.65	0.18	0.75	119.45
650.00	0.08	29.49	650.00	-0.47	-0.35	0.67	0.24	0.75	117.75
675.00	0.11	6.96	675.00	-0.44	-0.31	0.68	0.21	0.75	114.63
700.00	0.03	292.15	700.00	-0.41	-0.28	0.68	0.44	0.73	112.79
725.00	0.06	23.56	725.00	-0.40	-0.27	0.68	0.26	0.73	111.79
750.00	0.11	0.06	750.00	-0.36	-0.23	0.68	0.24	0.72	109.03
775.00	0.09	330.93	775.00	-0.32	-0.19	0.67	0.21	0.70	106.06
800.00	0.05	341.36	800.00	-0.29	-0.17	0.66	0.20	0.68	104.14
825.00	0.10	24.91	825.00	-0.26	-0.14	0.66	0.30	0.68	101.60

MD	INC	AZIM	TVD	VS	+N/-S	+E/-W	DLS	CLOSURE DIST	CLOSURE DIR
ft	deg	deg	ft	ft	ft	ft	°/100ft	ft	deg
850.00	0.14	6.37	850.00	-0.21	-0.09	0.68	0.23	0.68	97.19
875.00	0.17	6.95	875.00	-0.15	-0.02	0.68	0.12	0.68	91.43
900.00	0.11	16.83	900.00	-0.09	0.04	0.70	0.26	0.70	86.42
925.00	0.06	0.64	925.00	-0.06	0.08	0.70	0.22	0.71	83.49
950.00	0.12	316.08	950.00	-0.02	0.11	0.68	0.37	0.69	80.60
975.00	0.13	320.72	975.00	0.03	0.16	0.65	0.06	0.67	76.50
1000.00	0.10	328.82	1000.00	0.07	0.20	0.62	0.16	0.65	72.41
1025.00	0.06	311.41	1025.00	0.10	0.22	0.60	0.16	0.64	69.53
1050.00	0.11	1.55	1050.00	0.14	0.26	0.59	0.34	0.64	66.44
1075.00	0.12	325.77	1075.00	0.19	0.30	0.57	0.29	0.65	62.17
1100.00	0.18	2.59	1100.00	0.25	0.36	0.56	0.45	0.67	56.93
1125.00	0.10	349.29	1125.00	0.31	0.42	0.56	0.36	0.70	52.68
1150.00	0.08	344.26	1150.00	0.35	0.46	0.55	0.07	0.72	49.88
1175.00	0.15	4.17	1175.00	0.40	0.51	0.55	0.34	0.75	46.81
1200.00	0.14	335.29	1200.00	0.46	0.57	0.54	0.30	0.79	43.08
1225.00	0.09	311.44	1225.00	0.50	0.61	0.51	0.26	0.80	39.64
1250.00	0.11	5.46	1250.00	0.54	0.65	0.50	0.38	0.82	37.26
1275.00	0.08	300.53	1275.00	0.58	0.68	0.48	0.43	0.84	35.22
1300.00	0.18	15.12	1300.00	0.63	0.73	0.48	0.72	0.88	33.21
1325.00	0.12	295.57	1325.00	0.68	0.78	0.47	0.80	0.91	30.80
1350.00	0.22	241.88	1350.00	0.68	0.77	0.40	0.72	0.87	27.43
1375.00	0.18	55.16	1375.00	0.68	0.77	0.39	1.60	0.86	26.80
1400.00	0.19	44.92	1400.00	0.72	0.82	0.45	0.14	0.94	28.71
1425.00	0.15	49.02	1425.00	0.76	0.87	0.50	0.15	1.01	30.03
1450.00	0.14	54.56	1450.00	0.79	0.91	0.56	0.07	1.07	31.31
1475.00	0.17	71.62	1475.00	0.80	0.94	0.62	0.21	1.13	33.15
1500.00	0.17	76.84	1500.00	0.81	0.96	0.69	0.06	1.18	35.48
1525.00	0.08	59.19	1525.00	0.82	0.98	0.74	0.36	1.23	36.96
1550.00	0.29	49.65	1550.00	0.85	1.03	0.80	0.81	1.30	37.87
1575.00	0.13	70.39	1575.00	0.89	1.08	0.88	0.67	1.39	39.03
1600.00	0.16	72.03	1600.00	0.90	1.10	0.94	0.12	1.44	40.39
1625.00	0.28	57.14	1625.00	0.92	1.14	1.02	0.53	1.53	41.75

MD ft	INC deg	AZIM deg	TVD ft	VS ft	+N/-S ft	+E/-W ft	DLS °/100ft	CLOSURE DIST ft	CLOSURE DIR deg
1650.00	0.19	51.94	1650.00	0.97	1.20	1.11	0.39	1.63	42.57
1675.00	0.11	72.99	1675.00	0.99	1.23	1.16	0.37	1.69	43.20
1700.00	0.11	110.08	1700.00	0.98	1.23	1.21	0.28	1.72	44.34
1725.00	0.17	89.11	1725.00	0.96	1.23	1.27	0.31	1.76	45.93
1750.00	0.09	94.19	1750.00	0.94	1.22	1.32	0.34	1.80	47.19
1775.00	0.06	118.12	1775.00	0.93	1.22	1.35	0.15	1.82	48.05
1800.00	0.08	116.93	1800.00	0.91	1.20	1.38	0.07	1.83	48.97
1825.00	0.12	131.23	1825.00	0.88	1.18	1.42	0.17	1.84	50.28
1850.00	0.14	114.18	1850.00	0.84	1.15	1.46	0.18	1.86	51.90
1875.00	0.14	71.83	1875.00	0.83	1.14	1.52	0.40	1.90	53.03
1900.00	0.13	199.22	1900.00	0.81	1.13	1.54	0.96	1.91	53.79
1925.00	0.12	160.31	1925.00	0.76	1.08	1.54	0.33	1.88	55.05
1950.00	0.11	120.56	1950.00	0.72	1.04	1.57	0.31	1.88	56.46
1975.00	0.11	91.43	1975.00	0.70	1.03	1.61	0.21	1.91	57.48
2000.00	0.38	214.40	2000.00	0.63	0.96	1.59	1.80	1.85	58.90
2025.00	0.13	114.75	2025.00	0.56	0.88	1.57	1.71	1.80	60.77
2050.00	0.07	136.29	2049.99	0.53	0.85	1.60	0.29	1.82	61.99
2075.00	0.06	109.93	2074.99	0.51	0.84	1.63	0.13	1.83	62.76
2100.00	0.13	175.38	2099.99	0.47	0.81	1.64	0.46	1.83	63.85
2125.00	0.16	172.90	2124.99	0.41	0.74	1.65	0.16	1.81	65.74
2150.00	0.16	124.66	2149.99	0.35	0.69	1.68	0.52	1.82	67.74
2175.00	0.15	87.28	2174.99	0.32	0.67	1.74	0.39	1.87	68.94
2200.00	0.08	124.81	2199.99	0.30	0.66	1.79	0.38	1.91	69.70
2225.00	0.12	156.05	2224.99	0.26	0.63	1.81	0.26	1.92	70.92
2250.00	0.14	117.63	2249.99	0.22	0.59	1.85	0.36	1.94	72.36
2275.00	0.27	91.29	2274.99	0.19	0.57	1.94	0.62	2.02	73.54
2300.00	0.28	83.85	2299.99	0.17	0.58	2.06	0.15	2.14	74.32
2325.00	0.36	63.39	2324.99	0.18	0.62	2.19	0.56	2.28	74.20
2350.00	0.42	61.69	2349.99	0.23	0.70	2.34	0.22	2.45	73.39
2375.00	0.53	60.01	2374.99	0.30	0.80	2.52	0.46	2.65	72.40
2400.00	0.53	63.44	2399.99	0.36	0.91	2.73	0.13	2.88	71.55
2425.00	0.52	65.60	2424.99	0.42	1.01	2.94	0.08	3.10	71.03

MD	INC	AZIM	TVD	VS	+N/-S	+E/-W	DLS	CLOSURE DIST	CLOSURE DIR
ft	deg	deg	ft	ft	ft	ft	°/100ft	ft	deg
2450.00	0.65	63.76	2449.99	0.48	1.12	3.17	0.52	3.36	70.54
2475.00	0.75	58.92	2474.99	0.58	1.27	3.43	0.47	3.66	69.76
2500.00	0.67	58.28	2499.99	0.68	1.43	3.70	0.32	3.97	68.89
2525.00	0.70	63.87	2524.98	0.77	1.57	3.96	0.29	4.26	68.35
2550.00	0.71	66.11	2549.98	0.85	1.70	4.24	0.12	4.57	68.13
2575.00	0.78	65.29	2574.98	0.92	1.84	4.54	0.29	4.89	67.96
2600.00	0.81	61.69	2599.98	1.01	1.99	4.85	0.23	5.24	67.66
2625.00	0.92	62.73	2624.97	1.12	2.17	5.18	0.43	5.61	67.30
2650.00	1.02	66.60	2649.97	1.22	2.35	5.56	0.47	6.03	67.12
2675.00	1.03	68.56	2674.97	1.31	2.52	5.97	0.14	6.48	67.16
2700.00	1.02	70.26	2699.96	1.38	2.67	6.39	0.12	6.93	67.30
2725.00	1.05	68.47	2724.96	1.46	2.83	6.81	0.17	7.38	67.43
2750.00	1.04	66.17	2749.95	1.55	3.01	7.23	0.17	7.83	67.42
2775.00	1.01	65.80	2774.95	1.65	3.19	7.64	0.14	8.28	67.34
2800.00	1.00	66.41	2799.95	1.74	3.37	8.04	0.04	8.72	67.28
2825.00	1.06	66.10	2824.94	1.84	3.55	8.45	0.24	9.17	67.23
2850.00	1.02	66.46	2849.94	1.94	3.73	8.87	0.19	9.62	67.19
2875.00	1.01	66.59	2874.93	2.03	3.91	9.27	0.04	10.06	67.16
2900.00	0.97	63.55	2899.93	2.14	4.09	9.67	0.25	10.50	67.07
2925.00	0.95	61.34	2924.93	2.25	4.28	10.04	0.18	10.91	66.89
2950.00	0.99	61.37	2949.92	2.38	4.49	10.41	0.16	11.34	66.69
2975.00	0.94	63.11	2974.92	2.50	4.68	10.78	0.22	11.76	66.53
3000.00	0.77	62.54	2999.92	2.60	4.85	11.12	0.68	12.13	66.41
3025.00	0.75	59.78	3024.91	2.71	5.01	11.41	0.17	12.46	66.27
3050.00	0.79	64.25	3049.91	2.80	5.17	11.71	0.27	12.80	66.16
3075.00	0.69	60.92	3074.91	2.89	5.32	11.99	0.41	13.12	66.08
3100.00	0.59	60.06	3099.91	2.98	5.46	12.24	0.40	13.40	65.96
3125.00	0.44	62.08	3124.91	3.05	5.57	12.43	0.61	13.62	65.88
3150.00	0.32	68.76	3149.91	3.09	5.64	12.59	0.50	13.79	65.87
3175.00	0.29	76.33	3174.91	3.10	5.68	12.71	0.20	13.92	65.93
3200.00	0.34	74.62	3199.91	3.11	5.71	12.85	0.19	14.06	66.02
3225.00	0.38	75.79	3224.91	3.12	5.75	13.00	0.17	14.22	66.12

MD	INC	AZIM	TVD	VS	+N/-S	+E/-W	DLS	CLOSURE DIST	CLOSURE DIR
ft	deg	deg	ft	ft	ft	ft	°/100ft	ft	deg
3250.00	0.35	71.91	3249.91	3.14	5.80	13.15	0.17	14.37	66.21
3275.00	0.26	58.68	3274.91	3.16	5.85	13.27	0.46	14.51	66.21
3300.00	0.28	59.16	3299.90	3.20	5.91	13.38	0.10	14.62	66.15
3325.00	0.24	56.09	3324.90	3.25	5.97	13.47	0.19	14.74	66.09
3350.00	0.17	53.93	3349.90	3.28	6.02	13.54	0.27	14.82	66.02
3375.00	0.26	58.92	3374.90	3.32	6.07	13.62	0.35	14.92	65.97
3400.00	0.29	55.32	3399.90	3.36	6.14	13.72	0.15	15.03	65.90
3425.00	0.32	60.08	3424.90	3.41	6.21	13.84	0.17	15.17	65.82
3450.00	0.38	60.33	3449.90	3.46	6.29	13.97	0.21	15.32	65.77
3475.00	0.38	47.07	3474.90	3.53	6.38	14.10	0.35	15.48	65.64
3500.00	0.43	41.92	3499.90	3.63	6.51	14.22	0.23	15.64	65.41
3525.00	0.45	44.55	3524.90	3.74	6.65	14.35	0.12	15.82	65.15
3550.00	0.40	42.38	3549.90	3.84	6.78	14.48	0.20	15.99	64.90
3575.00	0.42	49.50	3574.90	3.94	6.91	14.61	0.22	16.16	64.70
3600.00	0.40	52.09	3599.90	4.02	7.02	14.75	0.13	16.33	64.55
3625.00	0.40	56.63	3624.90	4.10	7.12	14.89	0.13	16.50	64.44
3650.00	0.46	55.92	3649.90	4.17	7.22	15.04	0.26	16.69	64.35
3675.00	0.47	50.35	3674.90	4.25	7.35	15.21	0.18	16.89	64.22
3700.00	0.46	45.85	3699.90	4.36	7.48	15.36	0.15	17.08	64.03
3725.00	0.38	35.88	3724.90	4.47	7.62	15.48	0.42	17.25	63.80
3750.00	0.36	29.90	3749.90	4.58	7.75	15.56	0.18	17.39	63.53
3775.00	0.33	26.94	3774.89	4.70	7.88	15.63	0.15	17.51	63.25
3800.00	0.31	24.85	3799.89	4.81	8.01	15.70	0.07	17.62	62.97
3825.00	0.26	8.51	3824.89	4.92	8.13	15.73	0.38	17.71	62.68
3850.00	0.25	6.30	3849.89	5.03	8.24	15.75	0.07	17.77	62.39
3875.00	0.22	9.87	3874.89	5.12	8.34	15.76	0.12	17.83	62.12
3900.00	0.15	6.61	3899.89	5.20	8.42	15.77	0.29	17.88	61.91
3925.00	0.16	339.94	3924.89	5.27	8.49	15.77	0.29	17.90	61.71
3950.00	0.17	350.70	3949.89	5.34	8.55	15.75	0.13	17.92	61.49
3975.00	0.18	339.57	3974.89	5.41	8.63	15.73	0.14	17.94	61.25
4000.00	0.22	332.27	3999.89	5.50	8.71	15.69	0.20	17.95	60.97
4025.00	0.25	340.66	4024.89	5.60	8.80	15.65	0.17	17.96	60.65

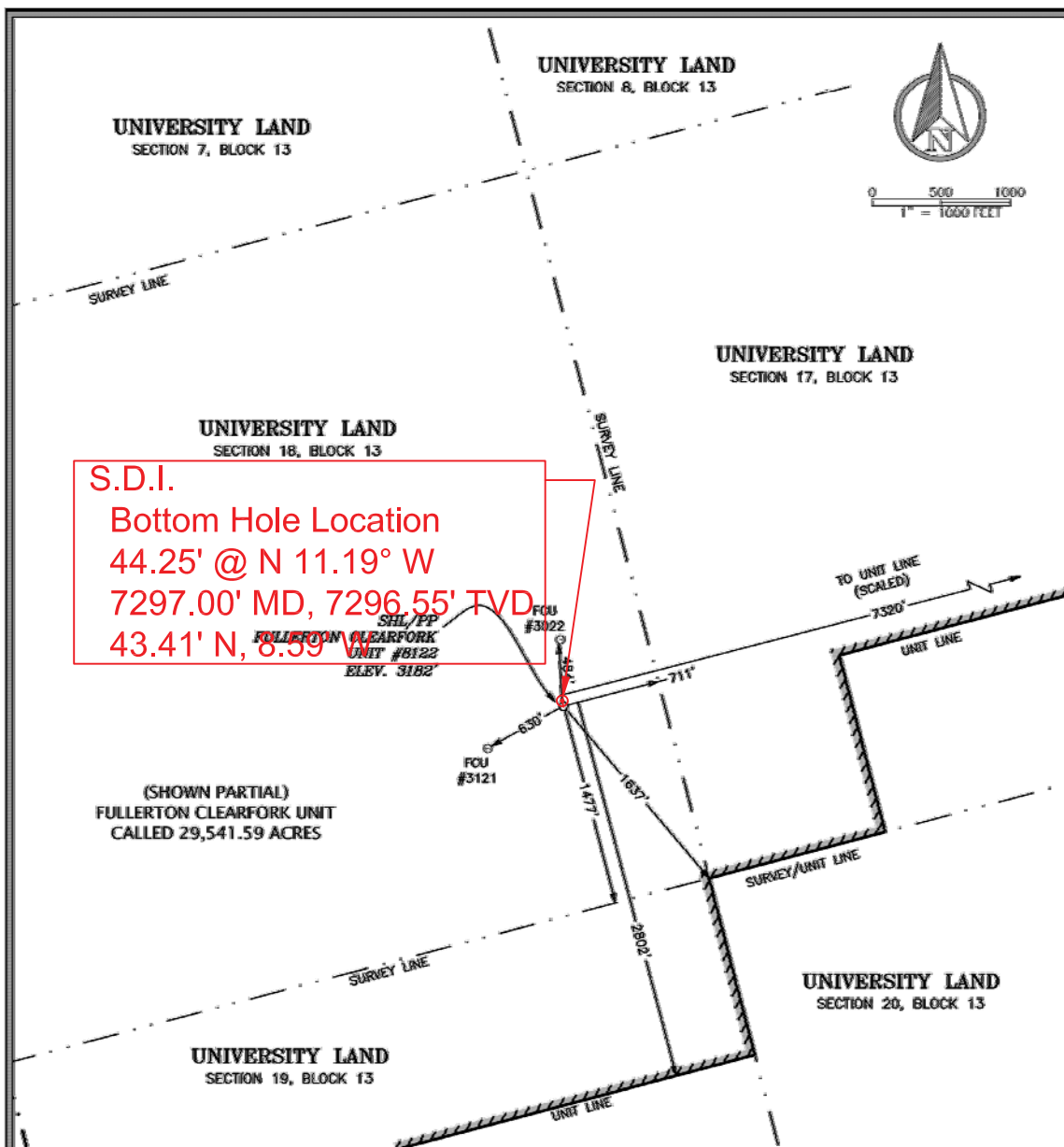
MD	INC	AZIM	TVD	VS	+N/-S	+E/-W	DLS	CLOSURE DIST	CLOSURE DIR
ft	deg	deg	ft	ft	ft	ft	°/100ft	ft	deg
4050.00	0.25	336.87	4049.89	5.70	8.90	15.61	0.07	17.97	60.31
4075.00	0.26	342.68	4074.89	5.81	9.01	15.57	0.11	17.99	59.96
4100.00	0.31	352.73	4099.89	5.94	9.13	15.55	0.28	18.03	59.59
4125.00	0.28	349.12	4124.89	6.06	9.25	15.53	0.14	18.08	59.21
4150.00	0.35	350.30	4149.89	6.20	9.39	15.50	0.28	18.13	58.81
4175.00	0.37	356.35	4174.89	6.35	9.54	15.49	0.16	18.19	58.36
4200.00	0.40	348.48	4199.89	6.52	9.71	15.46	0.25	18.26	57.89
4225.00	0.45	332.60	4224.89	6.70	9.88	15.40	0.50	18.30	57.33
4250.00	0.45	331.98	4249.89	6.89	10.05	15.31	0.02	18.32	56.72
4275.00	0.44	321.18	4274.89	7.07	10.21	15.21	0.34	18.32	56.12
4300.00	0.46	318.66	4299.89	7.24	10.36	15.08	0.12	18.30	55.51
4325.00	0.42	323.28	4324.89	7.41	10.51	14.96	0.22	18.28	54.91
4350.00	0.41	312.76	4349.89	7.56	10.64	14.84	0.31	18.26	54.35
4375.00	0.41	322.55	4374.89	7.71	10.78	14.72	0.28	18.24	53.79
4400.00	0.42	326.52	4399.88	7.88	10.92	14.61	0.12	18.24	53.22
4425.00	0.35	339.02	4424.88	8.04	11.07	14.54	0.42	18.27	52.71
4450.00	0.41	335.06	4449.88	8.20	11.22	14.47	0.26	18.31	52.20
4475.00	0.48	343.88	4474.88	8.40	11.41	14.40	0.39	18.37	51.62
4500.00	0.54	339.96	4499.88	8.62	11.62	14.33	0.25	18.45	50.97
4525.00	0.52	341.74	4524.88	8.85	11.84	14.26	0.08	18.53	50.30
4550.00	0.47	335.60	4549.88	9.06	12.04	14.18	0.30	18.60	49.67
4575.00	0.43	328.75	4574.88	9.25	12.21	14.09	0.26	18.64	49.08
4600.00	0.44	331.92	4599.88	9.43	12.38	13.99	0.10	18.68	48.50
4625.00	0.45	341.12	4624.88	9.62	12.56	13.92	0.29	18.74	47.94
4650.00	0.48	342.64	4649.88	9.82	12.75	13.85	0.13	18.83	47.38
4675.00	0.50	339.22	4674.88	10.03	12.95	13.78	0.15	18.91	46.78
4700.00	0.56	344.42	4699.87	10.26	13.17	13.71	0.31	19.01	46.15
4725.00	0.60	340.26	4724.87	10.51	13.41	13.63	0.22	19.13	45.47
4750.00	0.66	333.81	4749.87	10.78	13.67	13.53	0.38	19.23	44.70
4775.00	0.63	342.20	4774.87	11.06	13.93	13.42	0.40	19.34	43.94
4800.00	0.61	342.95	4799.87	11.33	14.18	13.34	0.09	19.47	43.24
4825.00	0.53	342.57	4824.87	11.57	14.42	13.27	0.30	19.60	42.61

MD	INC	AZIM	TVD	VS	+N/-S	+E/-W	DLS	CLOSURE DIST	CLOSURE DIR
ft	deg	deg	ft	ft	ft	ft	°/100ft	ft	deg
4850.00	0.55	350.86	4849.87	11.81	14.65	13.21	0.32	19.73	42.04
4875.00	0.60	350.03	4874.87	12.06	14.90	13.17	0.18	19.89	41.48
4900.00	0.53	344.37	4899.86	12.31	15.14	13.12	0.33	20.03	40.91
4925.00	0.51	344.42	4924.86	12.53	15.36	13.06	0.08	20.16	40.37
4950.00	0.53	338.91	4949.86	12.76	15.57	12.98	0.21	20.28	39.82
4975.00	0.71	329.59	4974.86	13.02	15.81	12.86	0.85	20.39	39.13
5000.00	0.70	322.49	4999.86	13.30	16.07	12.69	0.36	20.48	38.30
5025.00	0.66	323.76	5024.86	13.57	16.31	12.51	0.17	20.56	37.51
5050.00	0.65	321.16	5049.86	13.82	16.53	12.34	0.13	20.63	36.74
5075.00	0.64	317.68	5074.85	14.07	16.75	12.16	0.16	20.69	35.98
5100.00	0.64	316.43	5099.85	14.31	16.95	11.97	0.06	20.75	35.23
5125.00	0.67	321.97	5124.85	14.55	17.17	11.78	0.28	20.82	34.46
5150.00	0.65	323.62	5149.85	14.81	17.40	11.61	0.13	20.91	33.71
5175.00	0.59	325.50	5174.85	15.06	17.62	11.45	0.23	21.01	33.02
5200.00	0.60	326.30	5199.85	15.30	17.83	11.30	0.06	21.11	32.37
5225.00	0.68	334.02	5224.84	15.56	18.07	11.17	0.45	21.25	31.71
5250.00	0.66	332.78	5249.84	15.84	18.33	11.04	0.08	21.40	31.04
5275.00	0.72	337.75	5274.84	16.14	18.61	10.91	0.33	21.57	30.38
5300.00	0.73	341.38	5299.84	16.45	18.90	10.80	0.19	21.77	29.74
5325.00	0.71	339.99	5324.84	16.76	19.20	10.70	0.11	21.98	29.12
5350.00	0.89	342.51	5349.83	17.11	19.53	10.59	0.75	22.22	28.45
5375.00	0.77	346.09	5374.83	17.47	19.88	10.49	0.52	22.48	27.81
5400.00	0.77	344.13	5399.83	17.81	20.21	10.40	0.11	22.73	27.23
5425.00	0.76	335.99	5424.83	18.14	20.52	10.29	0.44	22.95	26.62
5450.00	0.68	336.43	5449.83	18.44	20.81	10.16	0.31	23.16	26.02
5475.00	0.65	339.80	5474.82	18.73	21.08	10.05	0.19	23.35	25.49
5500.00	0.60	342.04	5499.82	19.00	21.34	9.96	0.22	23.55	25.02
5525.00	0.62	335.75	5524.82	19.26	21.59	9.86	0.28	23.73	24.56
5550.00	0.56	338.77	5549.82	19.52	21.83	9.76	0.26	23.91	24.10
5575.00	0.59	335.97	5574.82	19.76	22.06	9.67	0.16	24.08	23.66
5600.00	0.55	335.17	5599.82	20.01	22.29	9.56	0.18	24.25	23.23
5625.00	0.55	330.21	5624.82	20.24	22.50	9.45	0.19	24.40	22.79

MD ft	INC deg	AZIM deg	TVD ft	VS ft	+N/-S ft	+E/-W ft	DLS °/100ft	CLOSURE DIST ft	CLOSURE DIR deg
5650.00	0.53	327.21	5649.81	20.46	22.70	9.33	0.15	24.54	22.35
5675.00	0.51	329.60	5674.81	20.67	22.89	9.21	0.12	24.68	21.92
5700.00	0.48	335.01	5699.81	20.88	23.08	9.11	0.21	24.82	21.54
5725.00	0.47	332.50	5724.81	21.08	23.27	9.02	0.09	24.96	21.19
5750.00	0.54	330.24	5749.81	21.29	23.46	8.91	0.27	25.10	20.80
5775.00	0.58	326.50	5774.81	21.52	23.67	8.79	0.23	25.25	20.36
5800.00	0.59	325.10	5799.81	21.75	23.88	8.64	0.06	25.40	19.89
5825.00	0.55	328.27	5824.81	21.98	24.09	8.51	0.18	25.55	19.45
5850.00	0.57	330.21	5849.81	22.21	24.30	8.38	0.10	25.71	19.03
5875.00	0.57	342.25	5874.80	22.45	24.53	8.28	0.48	25.89	18.65
5900.00	0.64	337.27	5899.80	22.71	24.77	8.19	0.34	26.09	18.29
5925.00	0.63	329.17	5924.80	22.98	25.02	8.07	0.36	26.29	17.87
5950.00	0.58	324.69	5949.80	23.22	25.24	7.92	0.26	26.45	17.42
5975.00	0.47	327.08	5974.80	23.44	25.43	7.79	0.44	26.60	17.04
6000.00	0.44	329.48	5999.80	23.62	25.60	7.69	0.15	26.73	16.71
6025.00	0.48	331.44	6024.80	23.81	25.78	7.59	0.17	26.87	16.40
6050.00	0.51	329.87	6049.80	24.02	25.97	7.48	0.12	27.02	16.07
6075.00	0.49	314.51	6074.80	24.21	26.14	7.35	0.54	27.15	15.70
6100.00	0.46	310.54	6099.79	24.38	26.28	7.20	0.19	27.24	15.31
6125.00	0.47	315.03	6124.79	24.55	26.41	7.05	0.15	27.34	14.94
6150.00	0.53	317.54	6149.79	24.73	26.57	6.90	0.25	27.45	14.55
6175.00	0.52	322.07	6174.79	24.93	26.75	6.75	0.17	27.59	14.16
6200.00	0.54	322.97	6199.79	25.14	26.93	6.61	0.08	27.73	13.79
6225.00	0.65	325.44	6224.79	25.37	27.14	6.46	0.44	27.90	13.39
6250.00	0.68	329.86	6249.79	25.64	27.38	6.30	0.26	28.10	12.96
6275.00	0.67	329.69	6274.79	25.92	27.64	6.15	0.06	28.32	12.55
6300.00	0.73	325.90	6299.78	26.20	27.90	5.99	0.30	28.53	12.12
6325.00	0.74	324.55	6324.78	26.50	28.16	5.81	0.08	28.75	11.66
6350.00	0.79	323.80	6349.78	26.80	28.43	5.61	0.22	28.98	11.17
6375.00	0.85	324.58	6374.78	27.13	28.72	5.40	0.21	29.23	10.66
6400.00	0.87	324.44	6399.77	27.47	29.03	5.19	0.07	29.49	10.13
6425.00	0.93	322.51	6424.77	27.82	29.34	4.95	0.30	29.76	9.58

MD	INC	AZIM	TVD	VS	+N/-S	+E/-W	DLS	CLOSURE DIST	CLOSURE DIR
ft	deg	deg	ft	ft	ft	ft	°/100ft	ft	deg
6450.00	0.96	320.63	6449.77	28.19	29.66	4.70	0.16	30.03	9.00
6475.00	0.94	322.15	6474.76	28.56	29.99	4.44	0.13	30.32	8.42
6500.00	0.89	317.10	6499.76	28.91	30.29	4.18	0.38	30.58	7.86
6525.00	0.94	314.94	6524.76	29.24	30.58	3.90	0.24	30.83	7.28
6550.00	0.97	314.96	6549.76	29.59	30.87	3.61	0.14	31.08	6.67
6575.00	1.02	315.07	6574.75	29.95	31.18	3.30	0.17	31.35	6.04
6600.00	1.10	316.55	6599.75	30.33	31.51	2.98	0.35	31.65	5.40
6625.00	1.16	315.23	6624.74	30.75	31.87	2.64	0.27	31.97	4.73
6650.00	1.20	315.83	6649.74	31.18	32.23	2.28	0.15	32.31	4.04
6675.00	1.26	316.49	6674.73	31.63	32.62	1.90	0.27	32.68	3.34
6700.00	1.36	314.23	6699.72	32.11	33.03	1.50	0.43	33.06	2.60
6725.00	1.38	313.74	6724.72	32.60	33.44	1.07	0.10	33.46	1.84
6750.00	1.36	313.22	6749.71	33.09	33.85	0.64	0.10	33.86	1.08
6775.00	1.42	308.37	6774.70	33.56	34.25	0.18	0.53	34.25	0.30
6800.00	1.43	310.09	6799.70	34.04	34.64	-0.30	0.17	34.64	359.50
6825.00	1.39	311.42	6824.69	34.53	35.04	-0.77	0.21	35.05	358.74
6850.00	1.26	312.16	6849.68	34.99	35.43	-1.20	0.52	35.45	358.06
6875.00	1.32	313.34	6874.67	35.44	35.81	-1.61	0.25	35.85	357.42
6900.00	1.34	314.91	6899.67	35.92	36.21	-2.03	0.17	36.27	356.79
6925.00	1.33	315.25	6924.66	36.40	36.63	-2.44	0.06	36.71	356.19
6950.00	1.26	314.70	6949.65	36.87	37.03	-2.84	0.27	37.14	355.61
6975.00	1.19	317.91	6974.65	37.32	37.41	-3.21	0.41	37.55	355.10
7000.00	1.25	318.65	6999.64	37.78	37.81	-3.56	0.24	37.98	354.62
7025.00	1.34	324.86	7024.64	38.28	38.25	-3.91	0.66	38.45	354.16
7050.00	1.36	322.82	7049.63	38.82	38.73	-4.26	0.21	38.96	353.73
7075.00	1.38	316.03	7074.62	39.33	39.18	-4.64	0.66	39.45	353.24
7100.00	1.48	313.19	7099.62	39.85	39.62	-5.09	0.48	39.94	352.68
7125.00	1.51	312.86	7124.61	40.38	40.06	-5.57	0.11	40.45	352.09
7150.00	1.45	312.93	7149.60	40.90	40.50	-6.04	0.23	40.95	351.52
7175.00	1.44	316.19	7174.59	41.42	40.94	-6.49	0.33	41.45	351.00
7200.00	1.51	317.29	7199.58	41.96	41.41	-6.93	0.30	41.98	350.50
7225.00	1.48	316.27	7224.57	42.52	41.88	-7.37	0.16	42.53	350.02

MD	INC	AZIM	TVD	VS	+N/-S	+E/-W	DLS	CLOSURE DIST	CLOSURE DIR
ft	deg	deg	ft	ft	ft	ft	°/100ft	ft	deg
7250.00	1.49	321.67	7249.57	43.08	42.37	-7.80	0.56	43.08	349.57
7275.00	1.66	317.38	7274.56	43.68	42.89	-8.24	0.81	43.68	349.12
7297.00	1.60	335.61	7296.55	44.25	43.41	-8.59	2.36	44.25	348.81



S.D.I.

Bottom Hole Location

44.25' @ N 11.19° W

7297.00' MD, 7296.55' TVD

43.41' N, 8.59' W

(SHOWN PARTIAL)
FULLERTON CLEARFORK UNIT
CALLED 29,541.59 ACRES

GENERAL NOTES

- COORDINATES SHOWN ARE BASED ON TEXAS PLANE COORDINATE SYSTEM OF NAD 27, TEXAS CENTRAL ZONE, 4203.
- VERTICAL DATUM IS MVD 88.
- LATITUDE AND LONGITUDE ARE NAD 27 AS SHOWN.
- AREA, DISTANCES, AND COORDINATES ARE "GRID".
- UNITS ARE UNITED STATES SURVEY FOOT.
- ALL LEASE AND TRACT INFORMATION SHOWN HERE ON IS DONE SO BY LIMITED DEED RECORD INFORMATION ONLY. ALL ACRES SHOWN ARE BY DEED AND LEASE CALL, EXCEPT WHERE NOTED. THIS IS NOT IN ANY WAY A "BOUNDARY SURVEY".

DRIVING DIRECTIONS TO LOCATION:
FROM THE INTERSECTION OF MAIN ST. AND BROADWAY ST. IN ANDREWS HEAD WEST ON BROADWAY ST. APPROX. 1.1 MILES. TAKE SLIGHT RIGHT ON RANCH ROAD 87 AND GO APPROX. 15.0 MILES. TURN RIGHT ON HWY 7001 AND GO APPROX. 0.4 MILES. TURN RIGHT ON HWY 1957 AND GO APPROX. 1.0 MILES. TURN LEFT ON LEASE ROAD AND GO APPROX. 0.3 MILES AND ARRIVE AT THE LOCATION APPROX. 600' ON THE LEFT.

I HEREBY STATE THAT THIS PLAT
SHOWS THE SUBJECT SURFACE
LOCATION AS STAKED ON THE GROUND.

MARK DILLON HARP
REGISTERED PROFESSIONAL LAND SURVEYOR
STATE OF TEXAS NO. 6445



WELL LOCATION INFORMATION:

SURFACE HOLE LOCATION/PP:
NAD 83, TEXAS CENTRAL ZONE COORD'S
Y = 10,888,113.98, X = 1,534,911.36
LAT: N 32.38063°, LONG: W 302.88024°
SHL: 1,477' FSL 8, 711' FELL
SHL: 2,802' FSL 8, 7,328' FELL

NAD 27, TEXAS CENTRAL ZONE COORD'S
Y = 995,537.69, X = 1,238,451.29
LAT: N 32.38052°, LONG: W 302.79978°

FOR RRC PURPOSES ONLY:

NAD 27, TEXAS NORTH CENTRAL ZONE COORD'S
Y = 300,964.92, X = 364,550.16
LAT: N 32.38052°, LONG: W 302.79978°

FSC INC
SURVEYORS & ENGINEERS
550 Bailey Ave., 205 - Fort Worth, TX 76107
Ph: 817.349.9800 - Fax: 979.752.5271
TYPE Firm 17957 | TYPIS Firm 10193887
www.fscinc.net
© 2016 FSC INC - ALL RIGHTS RESERVED

PLAT OF:
A PROPOSED WELL LOCATION FOR:
XTO ENERGY INC.
FULLERTON CLEARFORK UNIT #8122
SITUATED IN UNIVERSITY LAND SURVEY, SECTION 18,
BLOCK 13, LOCATED 15.5 MILES NORTHWEST OF
ANDREWS, IN ANDREWS COUNTY, TEXAS

DATE: 8-24-2016
DRAWN BY: AJ
CHECKED BY: DH
FIELD CREW: MOCMR
PROJECT NO: 2016090643
SCALE: 1" = 1000'
SHEET: 1 OF 1
REVISION: NO



Scientific Drilling International, Inc.

325 S. Faudree Rd. • Odessa, Texas 79761

P. O. Box 9699 • Midland, Texas 79708

Tel: 432-689-5600 • Fax: 432-697-0324

State of Texas
County of Midland

I, Jeffrey Loyd, certify that; I am employed by Scientific Drilling International; that I did on the day(s) of 05/11/2017 through 05/11/2017 conduct or supervise the taking of a Keeper Gyro survey from a depth of 97 feet to a depth of 7297 feet; that the data is true, correct, complete and within the limitations of the tool as set forth by Scientific Drilling International; that I am authorized and qualified to make this report; that this survey was conducted at the request of XTO Energy for the Fullerton CLearfork Unit #8122 Well, API# 42-003-47441 in Andrews County, Texas; and that I have reviewed this report and find that it conforms to the principals and procedures as set forth by Scientific Drilling International.


Field Technician