

PACESETTER ENERGY

Project: Andrews County, TX (NAD83)

Site: University JV 14-3H

Well: #3H

Wellbore: Lateral

Design: Lateral



3121+22 @ 3143.00ft (Nabors M58)
North American Datum 1983



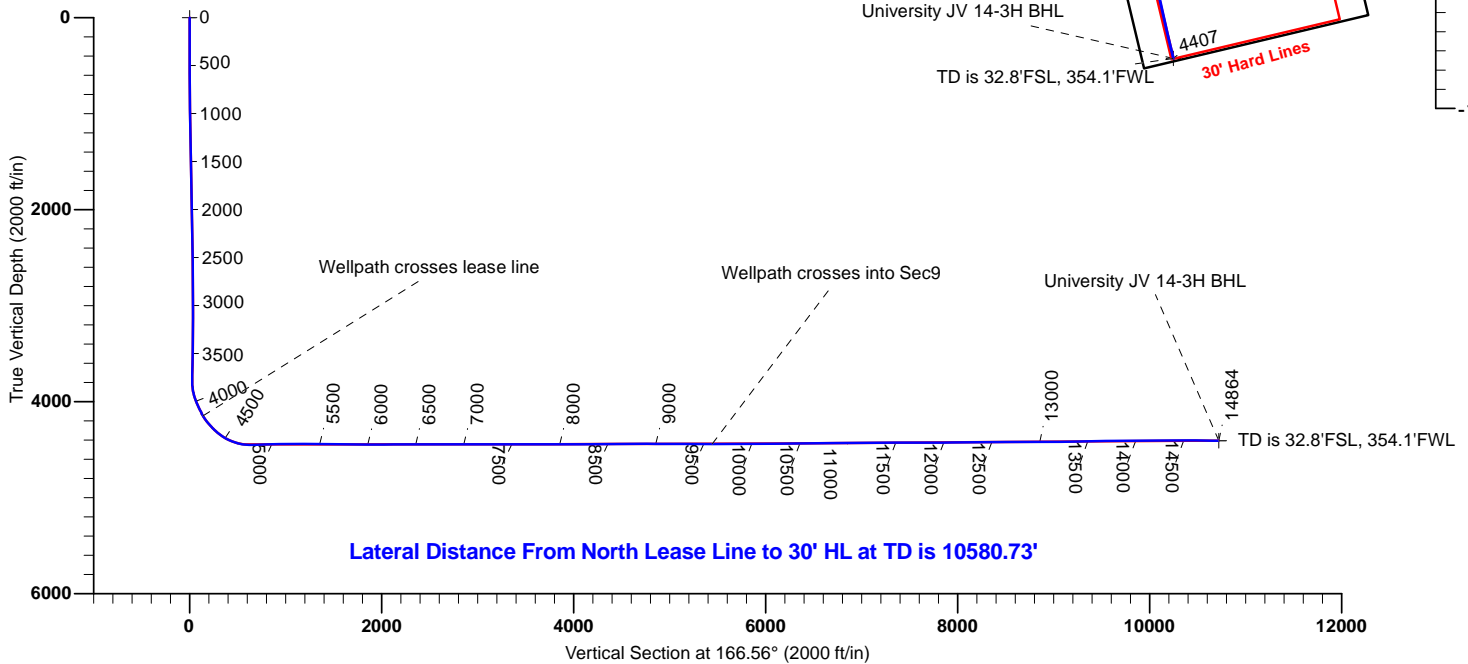
Azimuths to Grid North
True North: 2.27°
Magnetic North: 8.89°

Magnetic Field
Strength: 48210.8snT
Dip Angle: 60.36°
Date: 08/23/2016
Model: IGRF2015

To convert a Magnetic Direction to a Grid Direction, Add 8.89°

ANNOTATIONS

TVD	MD	+N/-S	+E/-W	Annotation
4147.93	4170.00	-132.44	48.15	Wellpath crosses lease line
4441.32	9588.00	-5294.29	1274.54	Wellpath crosses into Sec9
4406.52	14864.00	-10426.65	2493.85	TD is 32.8'FSL, 354.1'FWL



TARGET DETAILS

Name	TVD	+N/-S	+E/-W	Northing	Easting	Shape
University JV 14-3H SL	0.00	0.00	0.00	6846532.35	683702.57	Point
University JV 14-3H BHL	4406.52	-10426.65	2493.85	6836105.70	686196.42	Point

Design: Lateral (#3H/Lateral)
Created By: Mekka Williams
eSomnia Well Design
mekka@esominawelldesign.com
10:31, August 31 2016

VON DIRECTIONAL
12074 FM 3083 Conroe, Texas 77301
936-756-2400



COMPANY: PACESETTER ENERGY, LLC
SUBJECT: UNIVERSITY JV 14 #3H WELLBORE DIAGRAM
LOCATION: 42-003-47374

UNIVERSITY JV 14 #3H

TOC @
SURFACE
645 SX
CLASS C

12 1/4" HOLE

PERF. TREATMENT RECORD
-SEE ATTACHED

9 5/8", 36#, J-55 @ 1670'

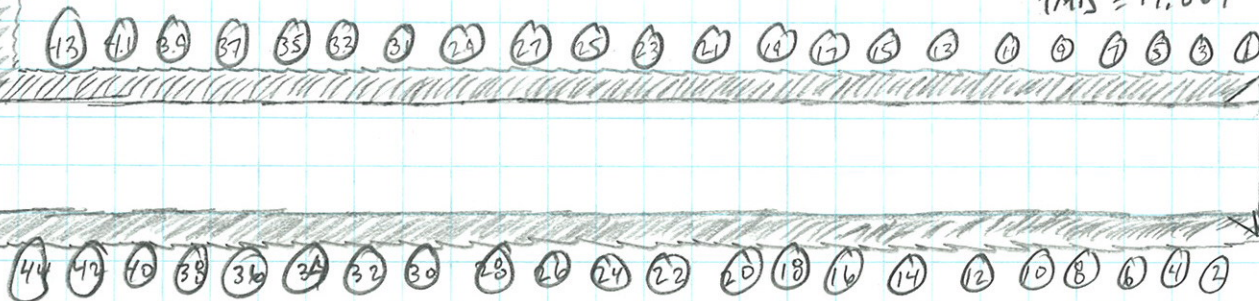
TOC @ SURFACE
4372 SX CLASS C & H BLEND

8 3/4"
HOLE

KOP = 3846'

TMD = 14,864'

TVD = 4432'



5 1/2", 17#, L-80 @ 14,856' MD

CASING 5-1/2", 17#, L-80, GBCD THREADS
TOP MARKER JT 3774'
FLOATATION COLLAR 5961'

Stage and Plug Type	Top MD	Bottom MD	Length ft	SPF	No. Holes	Distance ft	Comments	PLUG TYPE DEFINITIONS
PBTD	14820							
BLANK PLUG	14800						VERIFIED	BLANK PLUG
1	14751	14755	4	6	24	45	BLANK PLUG	Pro-Drill Composite - NO FLOW THRU PORT
STEELHAUS BIG BORE	14621						136' FSL	STEELHAUS BIG BORE
2	14517	14521	4	6	24	230		3.88" ID sleeve with drop down ball - DISSOLVABLE BALL
STEELHAUS BIG BORE	14387							Diamondback composites - CAGED BALL RUN IN PLACE
3	14283	14287	4	6	24	230		
STEELHAUS BIG BORE	14153							
4	14049	14053	4	6	24	230		
STEELHAUS BIG BORE	13919							
5	13815	13819	4	6	24	230		
STEELHAUS BIG BORE	13685							
6	13561	13585	4	6	24	230		
STEELHAUS BIG BORE	13451							
7	13347	13351	4	6	24	230		
STEELHAUS BIG BORE	13217							
8	13113	13117	4	6	24	230		
STEELHAUS BIG BORE	12983							
9	12879	12883	4	6	24	230		
STEELHAUS BIG BORE	12749							
10	12645	12649	4	6	24	230		
STEELHAUS BIG BORE	12515							
11	12411	12415	4	6	24	230		
STEELHAUS BIG BORE	12281							
12	12177	12181	4	6	24	230		
STEELHAUS BIG BORE	12047							
13	11943	11947	4	6	24	230		
STEELHAUS BIG BORE	11813							
14	11709	11713	4	6	24	230		
STEELHAUS BIG BORE	11579							
15	11475	11479	4	6	24	230		
STEELHAUS BIG BORE	11345							
16	11241	11245	4	6	24	230		
STEELHAUS BIG BORE	11111							
17	11007	11011	4	6	24	230		
STEELHAUS BIG BORE	10877							
18	10773	10777	4	6	24	230		
STEELHAUS BIG BORE	10643							
19	10539	10543	4	6	24	230		
STEELHAUS BIG BORE	10409							
20	10305	10309	4	6	24	230		
STEELHAUS BIG BORE	10175							
21	10071	10075	4	6	24	230		
STEELHAUS BIG BORE	9941							
22	9837	9841	4	6	24	230		
DIAMONDBACK FLO THRU	9707							
23	9603	9607	4	6	24	230		
DIAMONDBACK FLO THRU	9473							
24	9369	9373	4	6	24	230		
DIAMONDBACK FLO THRU	9239							
25	9135	9139	4	6	24	230		
DIAMONDBACK FLO THRU	9005							
26	8901	8905	4	6	24	230		
DIAMONDBACK FLO THRU	8771							
27	8667	8671	4	6	24	230		
DIAMONDBACK FLO THRU	8537							
28	8433	8437	4	6	24	230		
DIAMONDBACK FLO THRU	8303							
29	8199	8203	4	6	24	230		
DIAMONDBACK FLO THRU	8069							
30	7965	7969	4	6	24	230		
DIAMONDBACK FLO THRU	7835							
31	7731	7735	4	6	24	230		
DIAMONDBACK FLO THRU	7601							
32	7497	7501	4	6	24	230		
DIAMONDBACK FLO THRU	7367							
33	7263	7267	4	6	24	230		
DIAMONDBACK FLO THRU	7133							
34	7029	7033	4	6	24	230		
DIAMONDBACK FLO THRU	6899							
35	6795	6799	4	6	24	230		
DIAMONDBACK FLO THRU	6665							
36	6561	6565	4	6	24	230		
DIAMONDBACK FLO THRU	6431							
37	6327	6331	4	6	24	230		
DIAMONDBACK FLO THRU	6197							
38	6093	6097	4	6	24	230		
DIAMONDBACK FLO THRU	5963							
39	5859	5863	4	6	24	230		
DIAMONDBACK FLO THRU	5729							
40	5625	5629	4	6	24	230		
DIAMONDBACK FLO THRU	5495							
41	5391	5395	4	6	24	230		
DIAMONDBACK FLO THRU	5261							
42	5157	5161	4	6	24	230		
DIAMONDBACK FLO THRU	5027							
43	4923	4927	4	6	24	230		
DIAMONDBACK FLO THRU	4793							
44	4689	4693	4	6	24	230	408' FNL	

Stage #	Interval	Fluorescence %	Opening WHP	Ball Seat volume	Ball Seat Rate	Break Down	Break rate	Pre-ISP	Pre-FG	ISP	FG	MAX PSI	AVG PSI	MAX Rate	AVG Rate	Perforation interval	Plug type	CT plug count	Plug	WF	YF 120 Flex	HCI 15%	Pump down WF 110	YF 125 Flex	CLEAN LOAD	20/40 Jordan	100 Mesh	TOTAL SAND	Flush
1	San Andres	50	930	na	na	na	na	1460	0.76	1508	0.78	3242	2711	35.5	35.2	(14,751' - 14,755')	Copperhead	44	14800	18,946	80,913	1,750	23,520	0	2,979	160,117	0	160,117	358
2	San Andres	55	1156	327	5	4885	5	1363	0.74	1629	0.80	3252	3032	36.6	35.2	(14,514' - 14,518')	Steelhaus	43	14626	16,968	81,359	1,750	22,344	0	2,912	160,800	0	160,800	353
3	San Andres	70	1168	327	10	5770	4.8	3135	1.14	1433	0.76	5782	4658	35.2	33.5	(14,280' - 14,284')	Steelhaus	42	14378	430	108,627	1,750	23,110	0	3,189	162,760	0	162,760	347
4	San Andres	60	950	297	10	4784	4.9	3540	1.23	1663	0.81	5505	5027	35.1	34.8	(14,046' - 14,050')	Steelhaus	41	14150	21,665	85,029	1,750	20,076	0	3,060	160,100	0	160,100	342
5	San Andres	20	1158	317	10	5129	5	3559	1.24	1686	0.82	5852	3879	36	27.5	(13,812' - 13,816')	Steelhaus	40	13916	21,086	86,802	1,750	21,966	0	3,133	161,720	0	161,720	336
6	San Andres	2	1237	308	10	5021	5	2898	1.09	1997	0.89	5923	4730	35.2	32.6	(13,586' - 13,590')	Steelhaus	39	13690	13,898	98,990	1,750	20,328	0	3,213	161,280	0	161,280	331
7	San Andres	1	1302	302	10	5661	10	3241	1.17	1498	0.77	5995	5081	35.3	30.4	(13,358' - 13,362')	Steelhaus	38	13416	13,849	101,598	2,500	20,076	0	3,286	162,280	0	162,280	326
8	San Andres	1	955	300	10	5173	5	3049	1.12	1691	0.82	5749	4975	35.4	30.4	(13,110' - 13,114')	Steelhaus	37	13272	13,607	81,979	1,750	19,194	0	2,775	159,720	0	159,720	320
9	San Andres	25	1084	291	10	5279	5.1	4057	1.35	1694	0.82	5857	5202	35.1	29	(12,884' - 12,888')	Steelhaus	36	13000	13,203	61,999	1,750	17,745	40,340	3,215	159,920	0	159,920	315
10	San Andres	10	820	288	9.8	5630	5	3717	1.27	na	#####	5907	5206	26.9	17.6	(12,650' - 12,654')	Steelhaus	35	12750	16,057	44,098	1,750	17,039	0	1,880	2,984	0	2,984	309
11	San Andres	50	760	288	5	6013	5	3357	1.19	1972	0.88	6112	4636	30.8	12.6	(12,416' - 12,420')	Steelhaus	34	12520	50	0	2,500	12,096	70,801	2,034	3,952	0	3,952	304
12	San Andres	50	967	279	10	4924	5	na	#####	1548	0.78	5496	4746	35.6	34.9	(12,182' - 12,186')	Steelhaus	33	12386	12,520	77,975	2,500	11,780	0	2,494	158,724	0	158,724	298
13	San Andres	55	964	269	10	4910	5	2909	1.09	1877	0.86	5925	5003	37.2	29.5	(11,956' - 11,960')	Steelhaus	32	12052	20,855	9,098	3,500	17,094	95,479	3,477	161,899	0	161,899	293
14	San Andres	90	841	266	10	5781	5	na	#####	1630	0.80	5889	4886	35.7	28.8	(11,700' - 11,704')	Steelhaus	31	11822	13,173	0	2,500	16,716	97,467	3,092	160,040	0	160,040	287
15	San Andres	75	960	206	9.7	5052	4.9	na	#####	1489	0.77	5371	4772	35.5	35.3	(11,470' - 11,408')	Steelhaus	30	11574	12,193	9,370	2,500	15,624	85,472	2,980	155,720	0	155,720	282
16	San Andres	90	1010	253	10	5358	5	3217	1.16	1462	0.76	5773	4167	35.6	34.9	(11,240' - 11,246')	Steelhaus	29	11374	13,057	37,576	2,500	11,088	42,489	2,540	160,700	1000	161,700	277
17	San Andres	90	1028	250	10	5348	5	3344	1.19	1455	0.76	5630	4065	35.9	35.1	(11,006' - 11,016')	Steelhaus	28	11216	11,854	79,514	2,500	10,794	0	2,492	160,800	1000	161,800	271
18	San Andres	95	1020	243	10	5093	5	3122	1.14	1649	0.81	5527	3929	36.4	35.1	(10,774' - 10,784')	Steelhaus	27	10882	11,932	75,635	2,500	10,668	0	2,398	160,520	2000	162,520	266
19	San Andres	95	1113	238	10	4680	5	na	#####	1540	0.78	4928	3810	35.2	34.8	(10,524' - 10,534')	Steelhaus	26	10648	12,307	49,231	2,500	10,290	28,311	2,444	160,480	2700	163,180	260
20	San Andres	95	1041	231	9.8	4796	5	na	#####	1644	0.81	4804	3965	35.1	35	(10,302' - 10,312')	Steelhaus	25	10420	11,179	79,747	2,500	9,744	0	2,456	160,200	2000	162,200	255
21	San Andres	85	1100	227	9.9	5115	5	2774	1.06	1580	0.79	4656	3375	36.4	35	(10,072' - 10,082')	Steelhaus	24	10170	12,106	77,162	2,500	13,314	0	2,502	160,460	2000	162,460	249
22	San Andres	807	1053	220/10.5	10	5482	5	2788	1.06	1684	0.81	5200	3949	35.9	35.2	(9,842' - 9,852')	Steelhaus	23	9940	10,786	77,375	2,500	13,692	0	2,484	160,580	2000	162,580	244
23	San Andres	90	1153	220/5	10	5138	5	2702	1.05	1522	0.78	5335	3348	35.5	34.2	(9,600' - 9,610')	Diamondback	22	9712	10,249	76,701	2,500	11,530	0	2,405	160,320	2000	162,320	238
24	San Andres	20	1143	211/9	10	6078	5	2941	1.10	1599	0.80	5284	3708	35.5	34.9	(9,368' - 9,378')	Diamondback	21	9478	11,507	44,600	2,500	12,810	31,586	2,452	160,400	3000	163,400	233
25	San Andres	25	1177	206/8.5	10	5844	5	2562	1.01	1578	0.79	5286	3266	35.9	35.1	(9,124' - 9,134')	Diamondback	20	9244	9,823	76,360	2,500	12,180	0	2,402	160,440	3000	163,440	227
26	San Andres	85	1107	184/15	10	4857	5	3160	1.15	1575	0.79	5092	3759	35.5	35.3	(8,894' - 8,904')	Diamondback	19	9014	10,359	74,557	2,500	11,886	0	2,364	160,480	2500	162,980	222
27	San Andres	80	1069	192/10	10	4802	5	3040	1.12	1457	0.76	4764	3671	35.8	34.9	(8,668' - 8,678')	Diamondback	18	8766	10,172	76,881	2,500	9,870	0	2,367	161,180	3000	164,180	217
28	San Andres	75	1002	182/16	10	5451	5	2854	1.08	1585	0.79	4967	3880	35.3	35	(8,434' - 8,444')	Diamondback	17	8542	10,779	69,494	2,500	9,500	0	2,197	156,760	3000	159,760	211
29	San Andres	60	1044	183/10	10	4856	5	2254	0.94	1580	0.79	5101	3704	36.5	35	(8,200' - 8,208')	Diamondback	16	8308	8,847	78,758	2,500	8,190	0	2,340	157,500	3000	160,500	206
30	San Andres	70	1097	182/5	10	5765	5	2723	1.05	1608	0.80	5653	4208	36.1	34.9	(7,968' - 7,978')	Diamondback	15	8074	8,894	77,562	1,750	7,080	0	2,290	160,620	4000	164,620	200
31	San Andres	60	1145	75/107	10	4447	5	2469	0.99	1775	0.84	5211	4389	35.5	35.1	(7,714' - 7,724')	Diamondback	14	7840	8,438	72,980	2,500	7,686	0	2,181	161,520	3000	164,520	195
32	San Andres	30	1276	109/67	10	5126	5	2648	1.03	1680	0.81	6090	3635	35.3	34.2	(7,489' - 7,500')	Diamondback	13	7612	8,669	71,289	2,500	7,808	0	2,137	160,040	0	160,040	189
33	San Andres	75	1130	154/16	10	5396	5	2547	1.01	1690	0.82	4570	3330	35.2	35	(7,261' - 7,272')	Diamondback	12	7360	7,086	73,806	2,500	7,686	0	2,183	159,980	0	159,980	184
34	San Andres	90	1121	152/13	10	4768	5	2961	1.10	1634	0.80	4952	3972	35.2	35.1	(7,034' - 7,044')	Diamondback	11	7138	8,054	73,064	2,500	7,350	0	2,166	160,040	2200	162,240	179
35	San Andres	607	1108	150/10	10	4625	5	2729	1.05	1619	0.80	4476	3686	35.2	34.9	(6,800' - 6,810')	Diamondback	10	6904	8,205	69,670	2,500	6,972	0	2,080	160,080	2500	162,580	173
36	San Andres	20	1041	147/8	10	5743	5	2481	1.00	1600	0.80	4751	3524	35.3	35	(6,570' - 6,580')	Diamondback	9	6672	7,296	73,099	2,500	6,720	0	2,134	160,060	2500	162,560	168
37	San Andres	50	1057	140/9	10	4604	5	2311	0.96	1661	0.81	4490	3290	35.3	35	(6,314' - 6,324')	Diamondback	8	6436	7,057	72,759	2,500	6,510	0	2,115	160,840	2520	163,360	162
38	San Andres	657	1130	133/11	10	3938	5	2556	1.01	1649	0.81	4298	3244	35.6	35.1	(6,084' - 6,094')	Diamondback	7	6210	6,819	71,993	2,500	6,300	0	2,086	160,220	2500	162,720	157
39	San Andres	65	1090	127	10	4571	5	2467	0.99	1587	0.79	4247	3134	39.1	35.4	(5,858' - 5,868')	Diamondback	6	5960	6,542	74,436	5,000	6,804	0	2,209	159,920	2500	162,420	151
40	San Andres	40	1080	116/17	10	4881	5	2951	1.10	1619	0.80	5534	3715	35.5	35.3	(5,624' - 5,634')	Diamondback	5	5730	5,970	70,434	2,500	6,218	0	2,027	160,500	3000	163,500	146
41	San Andres	50	919	112/15	10	4856	5	2723	1.05	1626	0.80	4876	3536	35.5	35	(5,394' - 5,404')	Diamondback	4	5500	6,744	72,610	2,500	5,670	0	2,084	160,520	2200	162,720	141
42	San Andres	75	976	110	10	2509	5	2175	0.93	1764	0.83	4931	3326	35.6	35.4	(5,164' - 5,174')	Diamondback	3	5266	6,312	75,929	2,500	5,166	0	2,141	160,160	3000	163,160	135
43	San Andres	90	995	101/15	10	5130	5	3239	1.17	1524	0.78	6108	3401	35.8	33.3	(4,913' - 4,923')	Diamondback	2	5032	5,666	51,116	2,750	4,998	0	1,536	160,380	3000	163,380	129
44	San Andres	40	987		10	5059	5	na	#####	1491	0.77	5934	3244	35.4	34	(4,683' - 4,693')	Diamondback	1	4810	4,914	73,628								