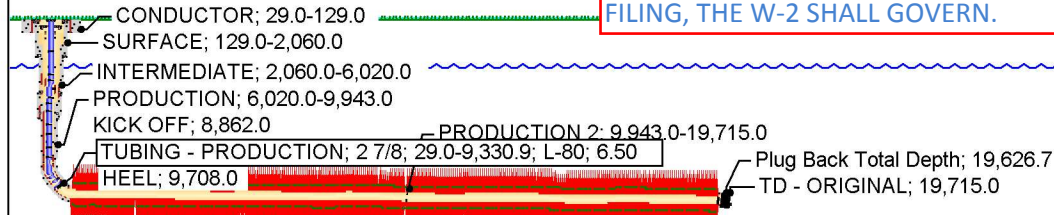


HORIZONTAL - ORIGINAL, 2/21/2017 1:08:26 PM

Directional schematic (actual)

THIS WELLBORE DIAGRAM IS REFLECTIVE OF THE INFORMATION THAT HAS BEEN PLACED BY FIELD PERSONEL. IF ANY DATA VARIES FROM THE W-2 FILING, THE W-2 SHALL GOVERN.



API/UWI	ST REG DIST	Field Name	Spud Date	On Prod Date
42-003-47354-0000	08	SPRABERRY (TREND AREA)	8/11/2016 22:30	12/1/2016 11:45

Perforations

Int #	Cluster #	Date	Type	Top (ftKB)	Top (TVD) (ftKB)	Btm (ftKB)	Btm (TVD) (ftKB)	Job
41	6	11/6/2016 02:37	CONVENTIONAL PERF	9,729.0	9,454.6	9,731.0	9,454.8	OCM, 10/13/2016 13:00
41	5	11/6/2016 02:36	CONVENTIONAL PERF	9,769.0	9,456.8	9,771.0	9,456.9	OCM, 10/13/2016 13:00
41	4	11/6/2016 02:35	CONVENTIONAL PERF	9,809.0	9,458.6	9,811.0	9,458.7	OCM, 10/13/2016 13:00
41	3	11/6/2016 02:34	CONVENTIONAL PERF	9,849.0	9,459.9	9,851.0	9,459.9	OCM, 10/13/2016 13:00
41	2	11/6/2016 02:33	CONVENTIONAL PERF	9,889.0	9,460.5	9,891.0	9,460.5	OCM, 10/13/2016 13:00
41	1	11/6/2016 02:32	CONVENTIONAL PERF	9,929.0	9,460.5	9,931.0	9,460.5	OCM, 10/13/2016 13:00
40	6	11/5/2016 18:20	CONVENTIONAL PERF	9,969.0	9,460.1	9,971.0	9,460.1	OCM, 10/13/2016 13:00
40	5	11/5/2016 18:19	CONVENTIONAL PERF	10,009.0	9,459.3	10,011.0	9,459.2	OCM, 10/13/2016 13:00
40	4	11/5/2016 18:18	CONVENTIONAL PERF	10,049.0	9,459.1	10,051.0	9,459.1	OCM, 10/13/2016 13:00
40	3	11/5/2016 18:17	CONVENTIONAL PERF	10,089.0	9,459.8	10,091.0	9,459.8	OCM, 10/13/2016 13:00
40	2	11/5/2016 18:16	CONVENTIONAL PERF	10,129.0	9,460.9	10,131.0	9,461.0	OCM, 10/13/2016 13:00
40	1	11/5/2016 18:15	CONVENTIONAL PERF	10,169.0	9,462.1	10,171.0	9,462.2	OCM, 10/13/2016 13:00
39	6	11/5/2016 08:40	CONVENTIONAL PERF	10,209.0	9,463.4	10,211.0	9,463.4	OCM, 10/13/2016 13:00
39	5	11/5/2016 08:39	CONVENTIONAL PERF	10,249.0	9,464.6	10,251.0	9,464.6	OCM, 10/13/2016 13:00
39	4	11/5/2016 08:38	CONVENTIONAL PERF	10,289.0	9,465.7	10,291.0	9,465.7	OCM, 10/13/2016 13:00
39	3	11/5/2016 08:37	CONVENTIONAL PERF	10,329.0	9,466.4	10,331.0	9,466.4	OCM, 10/13/2016 13:00
39	2	11/5/2016 08:36	CONVENTIONAL PERF	10,369.0	9,466.5	10,371.0	9,466.5	OCM, 10/13/2016 13:00
39	1	11/5/2016 08:35	CONVENTIONAL PERF	10,409.0	9,466.4	10,411.0	9,466.3	OCM, 10/13/2016 13:00
38	6	11/4/2016 23:35	CONVENTIONAL PERF	10,449.0	9,465.9	10,451.0	9,465.9	OCM, 10/13/2016 13:00
38	5	11/4/2016 23:34	CONVENTIONAL PERF	10,489.0	9,465.3	10,491.0	9,465.3	OCM, 10/13/2016 13:00
38	4	11/4/2016 23:33	CONVENTIONAL PERF	10,529.0	9,464.8	10,531.0	9,464.8	OCM, 10/13/2016 13:00
38	3	11/4/2016 23:32	CONVENTIONAL PERF	10,569.0	9,464.5	10,571.0	9,464.5	OCM, 10/13/2016 13:00
38	2	11/4/2016 23:31	CONVENTIONAL PERF	10,606.0	9,464.4	10,608.0	9,464.4	OCM, 10/13/2016 13:00
38	1	11/4/2016 23:30	CONVENTIONAL PERF	10,646.0	9,464.5	10,648.0	9,464.5	OCM, 10/13/2016 13:00
37	6	11/4/2016 15:20	CONVENTIONAL PERF	10,692.0	9,465.0	10,694.0	9,465.0	OCM, 10/13/2016 13:00
37	5	11/4/2016 15:19	CONVENTIONAL PERF	10,729.0	9,465.4	10,731.0	9,465.4	OCM, 10/13/2016 13:00
37	4	11/4/2016 15:18	CONVENTIONAL PERF	10,769.0	9,465.8	10,771.0	9,465.9	OCM, 10/13/2016 13:00
37	3	11/4/2016 15:17	CONVENTIONAL PERF	10,809.0	9,466.2	10,811.0	9,466.2	OCM, 10/13/2016 13:00
37	2	11/4/2016 15:16	CONVENTIONAL PERF	10,849.0	9,466.5	10,851.0	9,466.5	OCM, 10/13/2016 13:00
37	1	11/4/2016 15:15	CONVENTIONAL PERF	10,889.0	9,466.8	10,891.0	9,466.8	OCM, 10/13/2016 13:00
36	6	11/4/2016 05:01	CONVENTIONAL PERF	10,929.0	9,467.1	10,931.0	9,467.1	OCM, 10/13/2016 13:00
36	5	11/4/2016 05:00	CONVENTIONAL PERF	10,969.0	9,467.4	10,971.0	9,467.4	OCM, 10/13/2016 13:00
36	4	11/4/2016 04:59	CONVENTIONAL PERF	11,009.0	9,467.7	11,011.0	9,467.7	OCM, 10/13/2016 13:00
36	3	11/4/2016 04:58	CONVENTIONAL PERF	11,049.0	9,468.1	11,051.0	9,468.1	OCM, 10/13/2016 13:00
36	2	11/4/2016 04:57	CONVENTIONAL PERF	11,089.0	9,468.4	11,091.0	9,468.5	OCM, 10/13/2016 13:00
36	1	11/4/2016 04:56	CONVENTIONAL PERF	11,129.0	9,468.8	11,131.0	9,468.9	OCM, 10/13/2016 13:00
35	6	11/3/2016 19:16	CONVENTIONAL PERF	11,169.0	9,469.3	11,171.0	9,469.3	OCM, 10/13/2016 13:00
35	5	11/3/2016 19:15	CONVENTIONAL PERF	11,209.0	9,469.8	11,211.0	9,469.8	OCM, 10/13/2016 13:00
35	4	11/3/2016 19:14	CONVENTIONAL PERF	11,249.0	9,470.3	11,251.0	9,470.3	OCM, 10/13/2016 13:00
35	3	11/3/2016 19:13	CONVENTIONAL PERF	11,289.0	9,471.0	11,291.0	9,471.0	OCM, 10/13/2016 13:00
35	2	11/3/2016 19:12	CONVENTIONAL PERF	11,329.0	9,471.8	11,331.0	9,471.9	OCM, 10/13/2016 13:00
35	1	11/3/2016 19:11	CONVENTIONAL PERF	11,369.0	9,472.7	11,371.0	9,472.7	OCM, 10/13/2016 13:00
34	6	11/3/2016 03:05	CONVENTIONAL PERF	11,409.0	9,473.6	11,411.0	9,473.6	OCM, 10/13/2016 13:00
34	5	11/3/2016 03:04	CONVENTIONAL PERF	11,449.0	9,474.5	11,451.0	9,474.5	OCM, 10/13/2016 13:00
34	4	11/3/2016 03:03	CONVENTIONAL PERF	11,489.0	9,475.3	11,491.0	9,475.4	OCM, 10/13/2016 13:00
34	3	11/3/2016 03:02	CONVENTIONAL PERF	11,529.0	9,476.2	11,531.0	9,476.2	OCM, 10/13/2016 13:00
34	2	11/3/2016 03:01	CONVENTIONAL PERF	11,569.0	9,476.9	11,571.0	9,477.0	OCM, 10/13/2016 13:00
34	1	11/3/2016 03:00	CONVENTIONAL PERF	11,609.0	9,477.7	11,611.0	9,477.7	OCM, 10/13/2016 13:00
33	6	11/2/2016 14:15	CONVENTIONAL PERF	11,649.0	9,478.6	11,651.0	9,478.7	OCM, 10/13/2016 13:00
33	5	11/2/2016 14:14	CONVENTIONAL PERF	11,689.0	9,479.9	11,691.0	9,479.9	OCM, 10/13/2016 13:00
33	4	11/2/2016 14:13	CONVENTIONAL PERF	11,729.0	9,481.2	11,731.0	9,481.2	OCM, 10/13/2016 13:00
33	3	11/2/2016 14:12	CONVENTIONAL PERF	11,769.0	9,482.4	11,771.0	9,482.4	OCM, 10/13/2016 13:00
33	2	11/2/2016 14:11	CONVENTIONAL PERF	11,809.0	9,483.5	11,811.0	9,483.5	OCM, 10/13/2016 13:00
33	1	11/2/2016 14:10	CONVENTIONAL PERF	11,849.0	9,484.3	11,851.0	9,484.3	OCM, 10/13/2016 13:00
32	6	11/2/2016 04:10	CONVENTIONAL PERF	11,889.0	9,484.9	11,891.0	9,484.9	OCM, 10/13/2016 13:00
32	5	11/2/2016 04:09	CONVENTIONAL PERF	11,929.0	9,485.5	11,931.0	9,485.5	OCM, 10/13/2016 13:00
32	4	11/2/2016 04:08	CONVENTIONAL PERF	11,969.0	9,486.1	11,971.0	9,486.1	OCM, 10/13/2016 13:00
32	3	11/2/2016 04:07	CONVENTIONAL PERF	12,009.0	9,486.4	12,011.0	9,486.4	OCM, 10/13/2016 13:00
32	2	11/2/2016 04:06	CONVENTIONAL PERF	12,049.0	9,486.3	12,051.0	9,486.3	OCM, 10/13/2016 13:00
32	1	11/2/2016 04:05	CONVENTIONAL PERF	12,089.0	9,485.7	12,091.0	9,485.7	OCM, 10/13/2016 13:00
31	6	11/1/2016 18:07	CONVENTIONAL PERF	12,129.0	9,484.8	12,131.0	9,484.7	OCM, 10/13/2016 13:00
31	5	11/1/2016 18:06	CONVENTIONAL PERF	12,169.0	9,483.5	12,171.0	9,483.4	OCM, 10/13/2016 13:00
31	4	11/1/2016 18:05	CONVENTIONAL PERF	12,209.0	9,482.0	12,211.0	9,481.9	OCM, 10/13/2016 13:00
31	3	11/1/2016 18:04	CONVENTIONAL PERF	12,249.0	9,480.4	12,251.0	9,480.3	OCM, 10/13/2016 13:00
31	2	11/1/2016 18:03	CONVENTIONAL PERF	12,289.0	9,478.8	12,291.0	9,478.7	OCM, 10/13/2016 13:00
31	1	11/1/2016 18:02	CONVENTIONAL PERF	12,329.0	9,477.4	12,331.0	9,477.3	OCM, 10/13/2016 13:00

HORIZONTAL - ORIGINAL, 2/21/2017 1:08:31 PM

Directional schematic (actual)

CONDUCTOR; 29.0-129.0

SURFACE; 129.0-2,060.0

INTERMEDIATE; 2,060.0-6,020.0

PRODUCTION; 6,020.0-9,943.0

KICK OFF; 8,862.0

TUBING - PRODUCTION; 2 7/8; 29.0-9,330.9; L-80; 6.50

HEEL; 9,708.0

PRODUCTION 2: 9,943.0-19,715.0

Plug Back Total Depth; 19,626.7

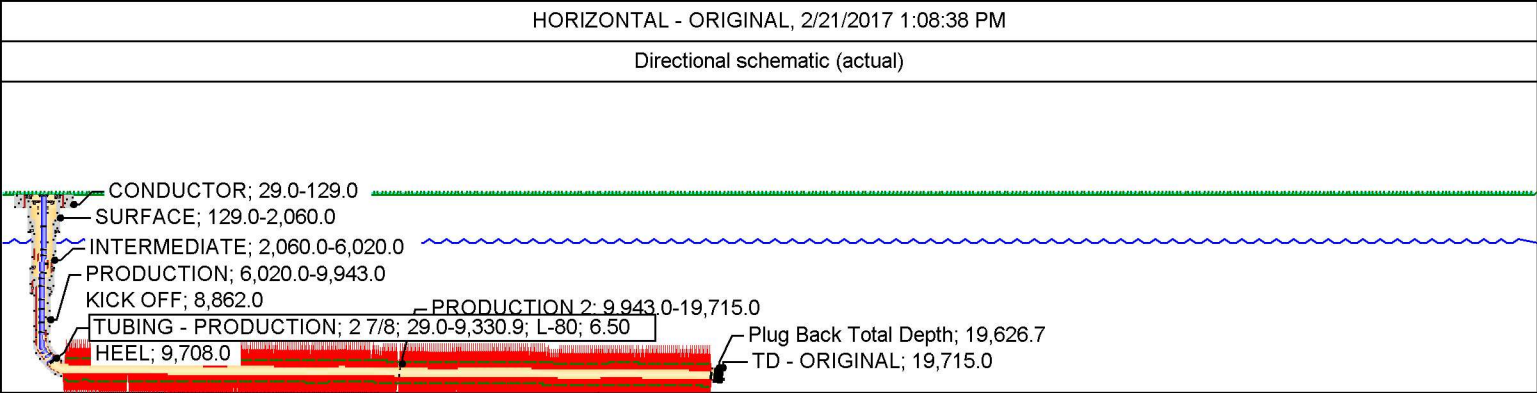
TD - ORIGINAL; 19,715.0

Perforations

Int #	Cluster #	Date	Type	Top (ftKB)	Top (TVD) (ftKB)	Btm (ftKB)	Btm (TVD) (ftKB)	Job
30	6	11/1/2016 08:41	CONVENTIONAL PERF	12,367.0	9,476.2	12,369.0	9,476.1	OCM, 10/13/2016 13:00
30	5	11/1/2016 08:40	CONVENTIONAL PERF	12,406.0	9,475.1	12,408.0	9,475.1	OCM, 10/13/2016 13:00
30	4	11/1/2016 08:39	CONVENTIONAL PERF	12,451.0	9,474.2	12,453.0	9,474.2	OCM, 10/13/2016 13:00
30	3	11/1/2016 08:38	CONVENTIONAL PERF	12,491.0	9,474.1	12,493.0	9,474.1	OCM, 10/13/2016 13:00
30	2	11/1/2016 08:37	CONVENTIONAL PERF	12,529.0	9,474.7	12,531.0	9,474.8	OCM, 10/13/2016 13:00
30	1	11/1/2016 08:36	CONVENTIONAL PERF	12,569.0	9,475.6	12,571.0	9,475.6	OCM, 10/13/2016 13:00
29	6	10/31/2016 22:55	CONVENTIONAL PERF	12,609.0	9,476.0	12,611.0	9,476.0	OCM, 10/13/2016 13:00
29	5	10/31/2016 22:54	CONVENTIONAL PERF	12,649.0	9,476.0	12,651.0	9,476.0	OCM, 10/13/2016 13:00
29	4	10/31/2016 22:53	CONVENTIONAL PERF	12,689.0	9,476.3	12,691.0	9,476.3	OCM, 10/13/2016 13:00
29	3	10/31/2016 22:52	CONVENTIONAL PERF	12,729.0	9,476.7	12,731.0	9,476.7	OCM, 10/13/2016 13:00
29	2	10/31/2016 22:51	CONVENTIONAL PERF	12,769.0	9,477.3	12,771.0	9,477.3	OCM, 10/13/2016 13:00
29	1	10/31/2016 22:50	CONVENTIONAL PERF	12,809.0	9,478.0	12,811.0	9,478.0	OCM, 10/13/2016 13:00
28	6	10/31/2016 08:53	CONVENTIONAL PERF	12,849.0	9,478.9	12,851.0	9,478.9	OCM, 10/13/2016 13:00
28	5	10/31/2016 08:52	CONVENTIONAL PERF	12,889.0	9,480.0	12,891.0	9,480.0	OCM, 10/13/2016 13:00
28	4	10/31/2016 08:51	CONVENTIONAL PERF	12,929.0	9,481.2	12,931.0	9,481.2	OCM, 10/13/2016 13:00
28	3	10/31/2016 08:50	CONVENTIONAL PERF	12,969.0	9,481.7	12,971.0	9,481.7	OCM, 10/13/2016 13:00
28	2	10/31/2016 08:49	CONVENTIONAL PERF	13,009.0	9,481.5	13,011.0	9,481.5	OCM, 10/13/2016 13:00
28	1	10/31/2016 08:48	CONVENTIONAL PERF	13,049.0	9,481.2	13,051.0	9,481.2	OCM, 10/13/2016 13:00
27	6	10/31/2016 00:05	CONVENTIONAL PERF	13,089.0	9,480.8	13,091.0	9,480.8	OCM, 10/13/2016 13:00
27	5	10/31/2016 00:04	CONVENTIONAL PERF	13,129.0	9,480.6	13,131.0	9,480.6	OCM, 10/13/2016 13:00
27	4	10/31/2016 00:03	CONVENTIONAL PERF	13,169.0	9,480.6	13,171.0	9,480.6	OCM, 10/13/2016 13:00
27	3	10/31/2016 00:02	CONVENTIONAL PERF	13,209.0	9,480.8	13,211.0	9,480.8	OCM, 10/13/2016 13:00
27	2	10/31/2016 00:01	CONVENTIONAL PERF	13,249.0	9,481.0	13,251.0	9,481.1	OCM, 10/13/2016 13:00
27	1	10/31/2016 00:00	CONVENTIONAL PERF	13,289.0	9,481.4	13,291.0	9,481.4	OCM, 10/13/2016 13:00
26	6	10/30/2016 13:26	CONVENTIONAL PERF	13,329.0	9,481.9	13,331.0	9,482.0	OCM, 10/13/2016 13:00
26	5	10/30/2016 13:25	CONVENTIONAL PERF	13,369.0	9,482.8	13,371.0	9,482.8	OCM, 10/13/2016 13:00
26	4	10/30/2016 13:24	CONVENTIONAL PERF	13,409.0	9,483.8	13,411.0	9,483.8	OCM, 10/13/2016 13:00
26	3	10/30/2016 13:23	CONVENTIONAL PERF	13,449.0	9,485.0	13,451.0	9,485.0	OCM, 10/13/2016 13:00
26	2	10/30/2016 13:22	CONVENTIONAL PERF	13,489.0	9,486.2	13,491.0	9,486.2	OCM, 10/13/2016 13:00
26	1	10/30/2016 13:21	CONVENTIONAL PERF	13,529.0	9,486.9	13,531.0	9,486.9	OCM, 10/13/2016 13:00
25	6	10/30/2016 03:57	CONVENTIONAL PERF	13,569.0	9,486.9	13,571.0	9,486.9	OCM, 10/13/2016 13:00
25	5	10/30/2016 03:56	CONVENTIONAL PERF	13,609.0	9,486.4	13,611.0	9,486.4	OCM, 10/13/2016 13:00
25	4	10/30/2016 03:55	CONVENTIONAL PERF	13,649.0	9,485.4	13,651.0	9,485.3	OCM, 10/13/2016 13:00
25	3	10/30/2016 03:54	CONVENTIONAL PERF	13,689.0	9,484.2	13,691.0	9,484.1	OCM, 10/13/2016 13:00
25	2	10/30/2016 03:53	CONVENTIONAL PERF	13,729.0	9,483.2	13,731.0	9,483.2	OCM, 10/13/2016 13:00
25	1	10/30/2016 03:52	CONVENTIONAL PERF	13,769.0	9,482.5	13,771.0	9,482.4	OCM, 10/13/2016 13:00
24	6	10/29/2016 19:05	CONVENTIONAL PERF	13,812.0	9,481.6	13,814.0	9,481.6	OCM, 10/13/2016 13:00
24	5	10/29/2016 19:04	CONVENTIONAL PERF	13,849.0	9,480.9	13,851.0	9,480.9	OCM, 10/13/2016 13:00
24	4	10/29/2016 19:03	CONVENTIONAL PERF	13,889.0	9,480.2	13,891.0	9,480.2	OCM, 10/13/2016 13:00
24	3	10/29/2016 19:02	CONVENTIONAL PERF	13,929.0	9,479.8	13,931.0	9,479.8	OCM, 10/13/2016 13:00
24	2	10/29/2016 19:01	CONVENTIONAL PERF	13,969.0	9,479.7	13,971.0	9,479.7	OCM, 10/13/2016 13:00
24	1	10/29/2016 19:00	CONVENTIONAL PERF	14,009.0	9,480.0	14,011.0	9,480.0	OCM, 10/13/2016 13:00
23	6	10/29/2016 08:04	CONVENTIONAL PERF	14,049.0	9,480.7	14,051.0	9,480.7	OCM, 10/13/2016 13:00
23	5	10/29/2016 08:03	CONVENTIONAL PERF	14,089.0	9,481.3	14,091.0	9,481.3	OCM, 10/13/2016 13:00
23	4	10/29/2016 08:02	CONVENTIONAL PERF	14,129.0	9,481.7	14,131.0	9,481.7	OCM, 10/13/2016 13:00
23	3	10/29/2016 08:01	CONVENTIONAL PERF	14,169.0	9,482.0	14,171.0	9,482.0	OCM, 10/13/2016 13:00
23	2	10/29/2016 08:00	CONVENTIONAL PERF	14,209.0	9,482.2	14,211.0	9,482.2	OCM, 10/13/2016 13:00
23	1	10/29/2016 07:59	CONVENTIONAL PERF	14,247.0	9,482.2	14,249.0	9,482.1	OCM, 10/13/2016 13:00
22	6	10/28/2016 22:14	CONVENTIONAL PERF	14,289.0	9,481.6	14,291.0	9,481.6	OCM, 10/13/2016 13:00
22	5	10/28/2016 22:13	CONVENTIONAL PERF	14,329.0	9,480.8	14,331.0	9,480.7	OCM, 10/13/2016 13:00
22	4	10/28/2016 22:12	CONVENTIONAL PERF	14,369.0	9,480.7	14,371.0	9,480.7	OCM, 10/13/2016 13:00
22	3	10/28/2016 22:11	CONVENTIONAL PERF	14,409.0	9,481.7	14,411.0	9,481.8	OCM, 10/13/2016 13:00
22	2	10/28/2016 22:10	CONVENTIONAL PERF	14,449.0	9,483.4	14,451.0	9,483.5	OCM, 10/13/2016 13:00
22	1	10/28/2016 22:09	CONVENTIONAL PERF	14,489.0	9,485.4	14,491.0	9,485.6	OCM, 10/13/2016 13:00
21	6	10/28/2016 12:44	CONVENTIONAL PERF	14,529.0	9,487.7	14,531.0	9,487.8	OCM, 10/13/2016 13:00
21	5	10/28/2016 12:43	CONVENTIONAL PERF	14,569.0	9,489.7	14,571.0	9,489.8	OCM, 10/13/2016 13:00
21	4	10/28/2016 12:42	CONVENTIONAL PERF	14,609.0	9,491.4	14,611.0	9,491.5	OCM, 10/13/2016 13:00
21	3	10/28/2016 12:41	CONVENTIONAL PERF	14,649.0	9,492.9	14,651.0	9,492.9	OCM, 10/13/2016 13:00
21	2	10/28/2016 12:40	CONVENTIONAL PERF	14,689.0	9,494.1	14,691.0	9,494.1	OCM, 10/13/2016 13:00
21	1	10/28/2016 12:39	CONVENTIONAL PERF	14,729.0	9,495.2	14,731.0	9,495.2	OCM, 10/13/2016 13:00
20	6	10/28/2016 03:32	CONVENTIONAL PERF	14,769.0	9,496.2	14,771.0	9,496.2	OCM, 10/13/2016 13:00
20	5	10/28/2016 03:31	CONVENTIONAL PERF	14,809.0	9,497.2	14,811.0	9,497.3	OCM, 10/13/2016 13:00
20	4	10/28/2016 03:30	CONVENTIONAL PERF	14,849.0	9,498.4	14,851.0	9,498.4	OCM, 10/13/2016 13:00
20	3	10/28/2016 03:29	CONVENTIONAL PERF	14,892.0	9,499.8	14,894.0	9,499.8	OCM, 10/13/2016 13:00
20	2	10/28/2016 03:28	CONVENTIONAL PERF	14,929.0	9,501.0	14,931.0	9,501.1	OCM, 10/13/2016 13:00
20	1	10/28/2016 03:27	CONVENTIONAL PERF	14,969.0	9,502.4	14,971.0	9,502.5	OCM, 10/13/2016 13:00
19	6	10/27/2016 17:20	CONVENTIONAL PERF	15,009.0	9,503.7	15,011.0	9,503.8	OCM, 10/13/2016 13:00
19	5	10/27/2016 17:19	CONVENTIONAL PERF	15,049.0	9,504.8	15,051.0	9,504.9	OCM, 10/13/2016 13:00

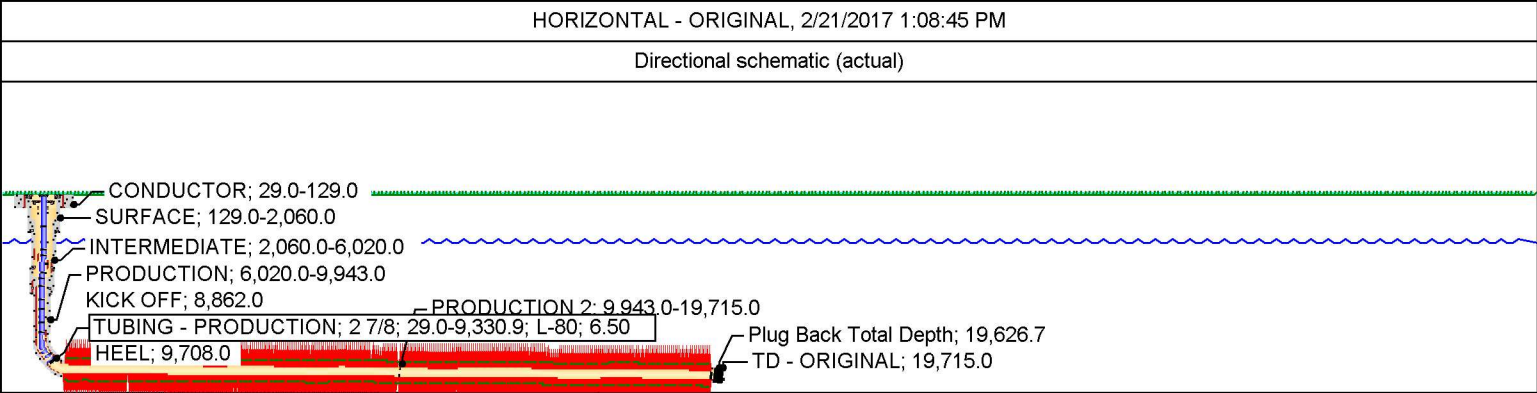
Page 2/4

Well Name: UNIVERSITY 7-43 46H



Perforations								
Int #	Cluster #	Date	Type	Top (ftKB)	Top (TVD) (ftKB)	Btm (ftKB)	Btm (TVD) (ftKB)	Job
19	4	10/27/2016 17:18	CONVENTIONAL PERF	15,089.0	9,505.8	15,091.0	9,505.8	OCM, 10/13/2016 13:00
19	3	10/27/2016 17:17	CONVENTIONAL PERF	15,129.0	9,506.4	15,131.0	9,506.5	OCM, 10/13/2016 13:00
19	2	10/27/2016 17:16	CONVENTIONAL PERF	15,169.0	9,506.9	15,171.0	9,507.0	OCM, 10/13/2016 13:00
19	1	10/27/2016 17:15	CONVENTIONAL PERF	15,209.0	9,507.6	15,211.0	9,507.6	OCM, 10/13/2016 13:00
18	6	10/27/2016 08:05	CONVENTIONAL PERF	15,249.0	9,508.5	15,251.0	9,508.6	OCM, 10/13/2016 13:00
18	5	10/27/2016 08:04	CONVENTIONAL PERF	15,289.0	9,509.3	15,291.0	9,509.3	OCM, 10/13/2016 13:00
18	4	10/27/2016 08:03	CONVENTIONAL PERF	15,327.0	9,509.6	15,329.0	9,509.6	OCM, 10/13/2016 13:00
18	3	10/27/2016 08:02	CONVENTIONAL PERF	15,369.0	9,509.5	15,371.0	9,509.5	OCM, 10/13/2016 13:00
18	2	10/27/2016 08:01	CONVENTIONAL PERF	15,409.0	9,509.8	15,411.0	9,509.8	OCM, 10/13/2016 13:00
18	1	10/27/2016 08:00	CONVENTIONAL PERF	15,449.0	9,510.3	15,451.0	9,510.3	OCM, 10/13/2016 13:00
17	6	10/26/2016 22:50	CONVENTIONAL PERF	15,489.0	9,510.7	15,491.0	9,510.7	OCM, 10/13/2016 13:00
17	5	10/26/2016 22:49	CONVENTIONAL PERF	15,529.0	9,510.7	15,531.0	9,510.7	OCM, 10/13/2016 13:00
17	4	10/26/2016 22:48	CONVENTIONAL PERF	15,569.0	9,510.3	15,571.0	9,510.3	OCM, 10/13/2016 13:00
17	3	10/26/2016 22:47	CONVENTIONAL PERF	15,609.0	9,509.6	15,611.0	9,509.5	OCM, 10/13/2016 13:00
17	2	10/26/2016 22:46	CONVENTIONAL PERF	15,649.0	9,508.4	15,651.0	9,508.4	OCM, 10/13/2016 13:00
17	1	10/26/2016 22:45	CONVENTIONAL PERF	15,689.0	9,507.0	15,691.0	9,506.9	OCM, 10/13/2016 13:00
16	6	10/26/2016 11:17	CONVENTIONAL PERF	15,729.0	9,505.2	15,731.0	9,505.2	OCM, 10/13/2016 13:00
16	5	10/26/2016 11:16	CONVENTIONAL PERF	15,769.0	9,503.9	15,771.0	9,503.9	OCM, 10/13/2016 13:00
16	4	10/26/2016 11:15	CONVENTIONAL PERF	15,809.0	9,503.2	15,811.0	9,503.2	OCM, 10/13/2016 13:00
16	3	10/26/2016 11:14	CONVENTIONAL PERF	15,849.0	9,502.9	15,851.0	9,502.8	OCM, 10/13/2016 13:00
16	2	10/26/2016 11:13	CONVENTIONAL PERF	15,889.0	9,502.7	15,891.0	9,502.7	OCM, 10/13/2016 13:00
16	1	10/26/2016 11:12	CONVENTIONAL PERF	15,929.0	9,502.8	15,931.0	9,502.8	OCM, 10/13/2016 13:00
15	6	10/26/2016 02:30	CONVENTIONAL PERF	15,969.0	9,502.8	15,971.0	9,502.8	OCM, 10/13/2016 13:00
15	5	10/26/2016 02:29	CONVENTIONAL PERF	16,009.0	9,502.8	16,011.0	9,502.8	OCM, 10/13/2016 13:00
15	4	10/26/2016 02:28	CONVENTIONAL PERF	16,049.0	9,502.6	16,051.0	9,502.6	OCM, 10/13/2016 13:00
15	3	10/26/2016 02:27	CONVENTIONAL PERF	16,089.0	9,502.1	16,091.0	9,502.1	OCM, 10/13/2016 13:00
15	2	10/26/2016 02:26	CONVENTIONAL PERF	16,129.0	9,501.7	16,131.0	9,501.6	OCM, 10/13/2016 13:00
15	1	10/26/2016 02:25	CONVENTIONAL PERF	16,169.0	9,501.6	16,171.0	9,501.6	OCM, 10/13/2016 13:00
14	6	10/25/2016 17:35	CONVENTIONAL PERF	16,209.0	9,501.6	16,211.0	9,501.6	OCM, 10/13/2016 13:00
14	5	10/25/2016 17:34	CONVENTIONAL PERF	16,249.0	9,501.2	16,251.0	9,501.1	OCM, 10/13/2016 13:00
14	4	10/25/2016 17:33	CONVENTIONAL PERF	16,289.0	9,500.2	16,291.0	9,500.1	OCM, 10/13/2016 13:00
14	3	10/25/2016 17:32	CONVENTIONAL PERF	16,329.0	9,499.7	16,331.0	9,499.7	OCM, 10/13/2016 13:00
14	2	10/25/2016 17:31	CONVENTIONAL PERF	16,369.0	9,500.1	16,371.0	9,500.1	OCM, 10/13/2016 13:00
14	1	10/25/2016 17:30	CONVENTIONAL PERF	16,409.0	9,501.0	16,411.0	9,501.1	OCM, 10/13/2016 13:00
13	6	10/25/2016 07:26	CONVENTIONAL PERF	16,449.0	9,502.2	16,451.0	9,502.2	OCM, 10/13/2016 13:00
13	5	10/25/2016 07:25	CONVENTIONAL PERF	16,489.0	9,503.3	16,491.0	9,503.3	OCM, 10/13/2016 13:00
13	4	10/25/2016 07:24	CONVENTIONAL PERF	16,530.0	9,503.7	16,532.0	9,503.7	OCM, 10/13/2016 13:00
13	3	10/25/2016 07:23	CONVENTIONAL PERF	16,570.0	9,503.4	16,572.0	9,503.4	OCM, 10/13/2016 13:00
13	2	10/25/2016 07:22	CONVENTIONAL PERF	16,609.0	9,503.2	16,611.0	9,503.2	OCM, 10/13/2016 13:00
13	1	10/25/2016 07:21	CONVENTIONAL PERF	16,649.0	9,503.5	16,651.0	9,503.5	OCM, 10/13/2016 13:00
12	6	10/24/2016 22:30	CONVENTIONAL PERF	16,689.0	9,504.1	16,691.0	9,504.2	OCM, 10/13/2016 13:00
12	5	10/24/2016 22:29	CONVENTIONAL PERF	16,729.0	9,505.0	16,731.0	9,505.1	OCM, 10/13/2016 13:00
12	4	10/24/2016 22:28	CONVENTIONAL PERF	16,769.0	9,506.2	16,771.0	9,506.3	OCM, 10/13/2016 13:00
12	3	10/24/2016 22:27	CONVENTIONAL PERF	16,809.0	9,507.4	16,811.0	9,507.5	OCM, 10/13/2016 13:00
12	2	10/24/2016 22:26	CONVENTIONAL PERF	16,849.0	9,508.7	16,851.0	9,508.7	OCM, 10/13/2016 13:00
12	1	10/24/2016 22:25	CONVENTIONAL PERF	16,889.0	9,509.5	16,891.0	9,509.6	OCM, 10/13/2016 13:00
11	6	10/24/2016 12:15	CONVENTIONAL PERF	16,929.0	9,509.8	16,931.0	9,509.8	OCM, 10/13/2016 13:00
11	5	10/24/2016 12:14	CONVENTIONAL PERF	16,969.0	9,510.1	16,971.0	9,510.1	OCM, 10/13/2016 13:00
11	4	10/24/2016 12:13	CONVENTIONAL PERF	17,009.0	9,511.3	17,011.0	9,511.4	OCM, 10/13/2016 13:00
11	3	10/24/2016 12:12	CONVENTIONAL PERF	17,049.0	9,513.4	17,051.0	9,513.5	OCM, 10/13/2016 13:00
11	2	10/24/2016 12:11	CONVENTIONAL PERF	17,089.0	9,515.5	17,091.0	9,515.6	OCM, 10/13/2016 13:00
11	1	10/24/2016 12:10	CONVENTIONAL PERF	17,129.0	9,517.7	17,131.0	9,517.8	OCM, 10/13/2016 13:00
10	6	10/24/2016 03:30	CONVENTIONAL PERF	17,169.0	9,519.9	17,171.0	9,520.0	OCM, 10/13/2016 13:00
10	5	10/24/2016 03:29	CONVENTIONAL PERF	17,209.0	9,522.2	17,211.0	9,522.3	OCM, 10/13/2016 13:00
10	4	10/24/2016 03:28	CONVENTIONAL PERF	17,249.0	9,524.2	17,251.0	9,524.3	OCM, 10/13/2016 13:00
10	3	10/24/2016 03:27	CONVENTIONAL PERF	17,289.0	9,525.2	17,291.0	9,525.2	OCM, 10/13/2016 13:00
10	2	10/24/2016 03:26	CONVENTIONAL PERF	17,329.0	9,525.2	17,331.0	9,525.2	OCM, 10/13/2016 13:00
10	1	10/24/2016 03:25	CONVENTIONAL PERF	17,369.0	9,525.0	17,371.0	9,525.0	OCM, 10/13/2016 13:00
9	6	10/23/2016 17:18	CONVENTIONAL PERF	17,409.0	9,524.8	17,411.0	9,524.8	OCM, 10/13/2016 13:00
9	5	10/23/2016 17:17	CONVENTIONAL PERF	17,449.0	9,524.8	17,451.0	9,524.9	OCM, 10/13/2016 13:00
9	4	10/23/2016 17:16	CONVENTIONAL PERF	17,489.0	9,525.2	17,491.0	9,525.2	OCM, 10/13/2016 13:00
9	3	10/23/2016 17:15	CONVENTIONAL PERF	17,529.0	9,525.7	17,531.0	9,525.8	OCM, 10/13/2016 13:00
9	2	10/23/2016 17:14	CONVENTIONAL PERF	17,569.0	9,526.0	17,571.0	9,526.0	OCM, 10/13/2016 13:00
9	1	10/23/2016 17:13	CONVENTIONAL PERF	17,609.0	9,526.0	17,611.0	9,526.0	OCM, 10/13/2016 13:00
8	6	10/23/2016 07:30	CONVENTIONAL PERF	17,649.0	9,526.0	17,651.0	9,526.0	OCM, 10/13/2016 13:00
8	5	10/23/2016 07:29	CONVENTIONAL PERF	17,689.0	9,526.0	17,691.0	9,526.0	OCM, 10/13/2016 13:00
8	4	10/23/2016 07:28	CONVENTIONAL PERF	17,729.0	9,525.8	17,731.0	9,525.8	OCM, 10/13/2016 13:00
8	3	10/23/2016 07:27	CONVENTIONAL PERF	17,769.0	9,525.1	17,771.0	9,525.0	OCM, 10/13/2016 13:00

Well Name: UNIVERSITY 7-43 46H



Perforations								
Int #	Cluster #	Date	Type	Top (ftKB)	Top (TVD) (ftKB)	Btm (ftKB)	Btm (TVD) (ftKB)	Job
8	2	10/23/2016 07:26	CONVENTIONAL PERF	17,809.0	9,523.9	17,811.0	9,523.9	OCM, 10/13/2016 13:00
8	1	10/23/2016 07:25	CONVENTIONAL PERF	17,849.0	9,522.4	17,851.0	9,522.3	OCM, 10/13/2016 13:00
7	6	10/22/2016 21:50	CONVENTIONAL PERF	17,889.0	9,520.6	17,891.0	9,520.5	OCM, 10/13/2016 13:00
7	5	10/22/2016 21:49	CONVENTIONAL PERF	17,929.0	9,519.3	17,931.0	9,519.2	OCM, 10/13/2016 13:00
7	4	10/22/2016 21:48	CONVENTIONAL PERF	17,969.0	9,518.7	17,971.0	9,518.7	OCM, 10/13/2016 13:00
7	3	10/22/2016 21:47	CONVENTIONAL PERF	18,009.0	9,518.4	18,011.0	9,518.4	OCM, 10/13/2016 13:00
7	2	10/22/2016 21:46	CONVENTIONAL PERF	18,049.0	9,518.0	18,051.0	9,518.0	OCM, 10/13/2016 13:00
7	1	10/22/2016 21:45	CONVENTIONAL PERF	18,089.0	9,517.5	18,091.0	9,517.4	OCM, 10/13/2016 13:00
6	6	10/22/2016 11:11	CONVENTIONAL PERF	18,129.0	9,516.5	18,131.0	9,516.5	OCM, 10/13/2016 13:00
6	5	10/22/2016 11:10	CONVENTIONAL PERF	18,169.0	9,515.3	18,171.0	9,515.2	OCM, 10/13/2016 13:00
6	4	10/22/2016 11:09	CONVENTIONAL PERF	18,209.0	9,514.4	18,211.0	9,514.4	OCM, 10/13/2016 13:00
6	3	10/22/2016 11:08	CONVENTIONAL PERF	18,249.0	9,514.2	18,251.0	9,514.2	OCM, 10/13/2016 13:00
6	2	10/22/2016 11:07	CONVENTIONAL PERF	18,289.0	9,514.4	18,291.0	9,514.4	OCM, 10/13/2016 13:00
6	1	10/22/2016 11:06	CONVENTIONAL PERF	18,329.0	9,514.7	18,331.0	9,514.7	OCM, 10/13/2016 13:00
5	6	10/22/2016 01:15	CONVENTIONAL PERF	18,369.0	9,515.3	18,371.0	9,515.4	OCM, 10/13/2016 13:00
5	5	10/22/2016 01:14	CONVENTIONAL PERF	18,409.0	9,516.4	18,411.0	9,516.5	OCM, 10/13/2016 13:00
5	4	10/22/2016 01:13	CONVENTIONAL PERF	18,449.0	9,518.1	18,451.0	9,518.1	OCM, 10/13/2016 13:00
5	3	10/22/2016 01:12	CONVENTIONAL PERF	18,489.0	9,520.1	18,491.0	9,520.2	OCM, 10/13/2016 13:00
5	2	10/22/2016 01:11	CONVENTIONAL PERF	18,529.0	9,522.6	18,531.0	9,522.8	OCM, 10/13/2016 13:00
5	1	10/22/2016 01:10	CONVENTIONAL PERF	18,569.0	9,524.8	18,571.0	9,524.9	OCM, 10/13/2016 13:00
4	6	10/21/2016 13:05	CONVENTIONAL PERF	18,609.0	9,525.8	18,611.0	9,525.9	OCM, 10/13/2016 13:00
4	5	10/21/2016 13:04	CONVENTIONAL PERF	18,649.0	9,526.0	18,651.0	9,526.0	OCM, 10/13/2016 13:00
4	4	10/21/2016 13:03	CONVENTIONAL PERF	18,689.0	9,525.5	18,691.0	9,525.5	OCM, 10/13/2016 13:00
4	3	10/21/2016 13:02	CONVENTIONAL PERF	18,729.0	9,524.5	18,731.0	9,524.5	OCM, 10/13/2016 13:00
4	2	10/21/2016 13:01	CONVENTIONAL PERF	18,769.0	9,523.8	18,771.0	9,523.8	OCM, 10/13/2016 13:00
4	1	10/21/2016 13:00	CONVENTIONAL PERF	18,809.0	9,523.7	18,811.0	9,523.7	OCM, 10/13/2016 13:00
3	6	10/20/2016 20:26	CONVENTIONAL PERF	18,849.0	9,523.5	18,851.0	9,523.5	OCM, 10/13/2016 13:00
3	5	10/20/2016 20:25	CONVENTIONAL PERF	18,889.0	9,522.8	18,891.0	9,522.8	OCM, 10/13/2016 13:00
3	4	10/20/2016 20:24	CONVENTIONAL PERF	18,929.0	9,522.0	18,931.0	9,522.0	OCM, 10/13/2016 13:00
3	3	10/20/2016 20:23	CONVENTIONAL PERF	18,969.0	9,522.2	18,971.0	9,522.2	OCM, 10/13/2016 13:00
3	2	10/20/2016 20:22	CONVENTIONAL PERF	19,009.0	9,523.3	19,011.0	9,523.4	OCM, 10/13/2016 13:00
3	1	10/20/2016 20:21	CONVENTIONAL PERF	19,049.0	9,524.8	19,051.0	9,524.9	OCM, 10/13/2016 13:00
2	6	10/20/2016 06:05	CONVENTIONAL PERF	19,089.0	9,526.5	19,091.0	9,526.6	OCM, 10/13/2016 13:00
2	5	10/20/2016 06:04	CONVENTIONAL PERF	19,129.0	9,528.4	19,131.0	9,528.5	OCM, 10/13/2016 13:00
2	4	10/20/2016 06:03	CONVENTIONAL PERF	19,169.0	9,530.5	19,171.0	9,530.6	OCM, 10/13/2016 13:00
2	3	10/20/2016 06:02	CONVENTIONAL PERF	19,209.0	9,532.6	19,211.0	9,532.7	OCM, 10/13/2016 13:00
2	2	10/20/2016 06:01	CONVENTIONAL PERF	19,249.0	9,534.1	19,251.0	9,534.2	OCM, 10/13/2016 13:00
2	1	10/20/2016 06:00	CONVENTIONAL PERF	19,289.0	9,535.0	19,291.0	9,535.0	OCM, 10/13/2016 13:00
1	6	10/17/2016 14:36	CONVENTIONAL PERF	19,329.0	9,535.7	19,331.0	9,535.7	OCM, 10/13/2016 13:00
1	5	10/17/2016 14:36	CONVENTIONAL PERF	19,369.0	9,536.3	19,371.0	9,536.3	OCM, 10/13/2016 13:00
1	4	10/17/2016 14:35	CONVENTIONAL PERF	19,409.0	9,536.8	19,411.0	9,536.9	OCM, 10/13/2016 13:00
1	3	10/17/2016 14:35	CONVENTIONAL PERF	19,449.0	9,537.3	19,451.0	9,537.3	OCM, 10/13/2016 13:00
1	2	10/17/2016 14:34	CONVENTIONAL PERF	19,489.0	9,537.7	19,491.0	9,537.8	OCM, 10/13/2016 13:00
1	1	10/17/2016 14:34	CONVENTIONAL PERF	19,529.0	9,538.2	19,531.0	9,538.2	OCM, 10/13/2016 13:00
1	1		CONVENTIONAL PERF	19,529.0	9,538.2	19,531.0	9,538.2	OCM, 10/13/2016 13:00