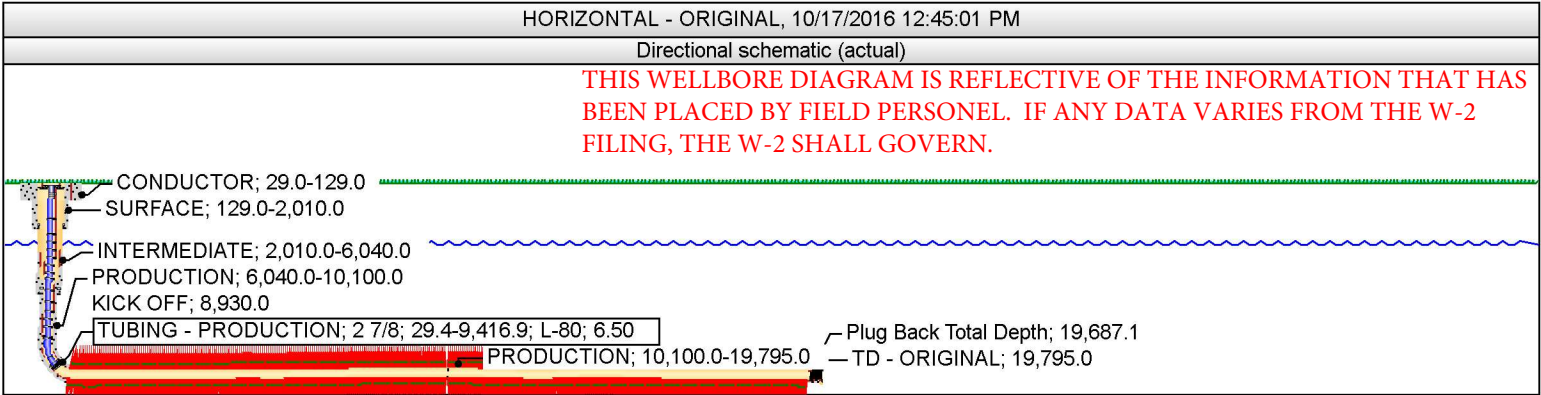


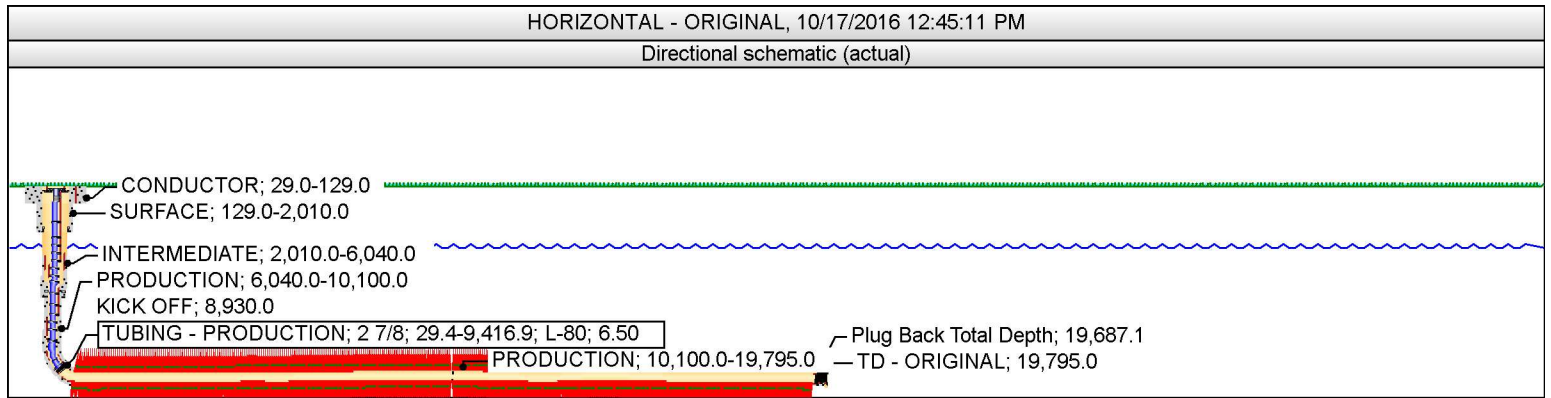
Well Name: UNIVERSITY 7-43 38H



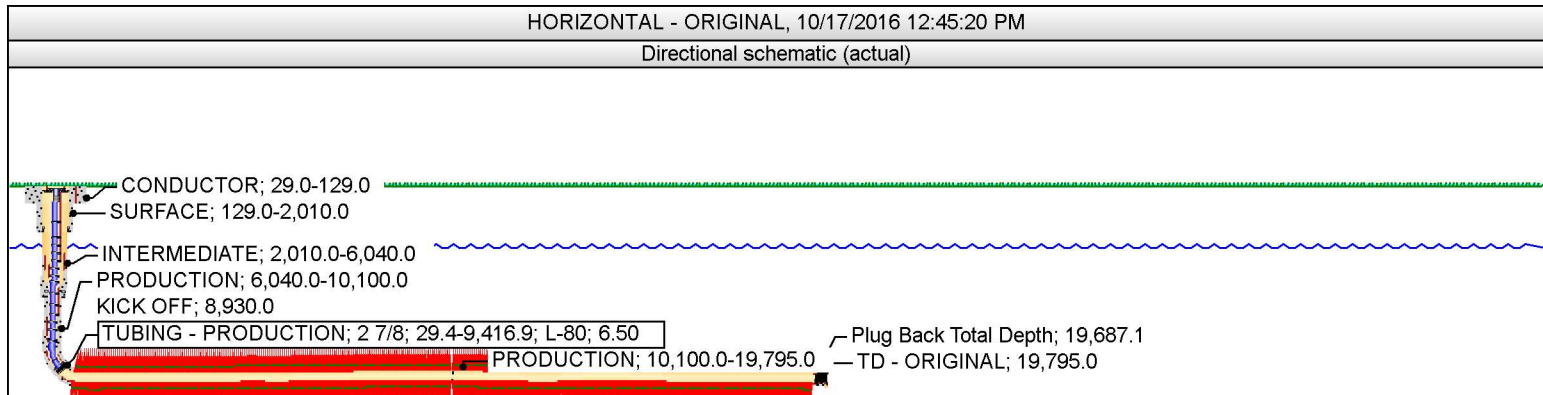
API/UWI	ST REG DIST	Field Name	Spud Date	On Prod Date
42-003-47346-0000	08	SPRABERRY (TREND AREA)	4/23/2016 06:45	9/30/2016 11:00

Perforations

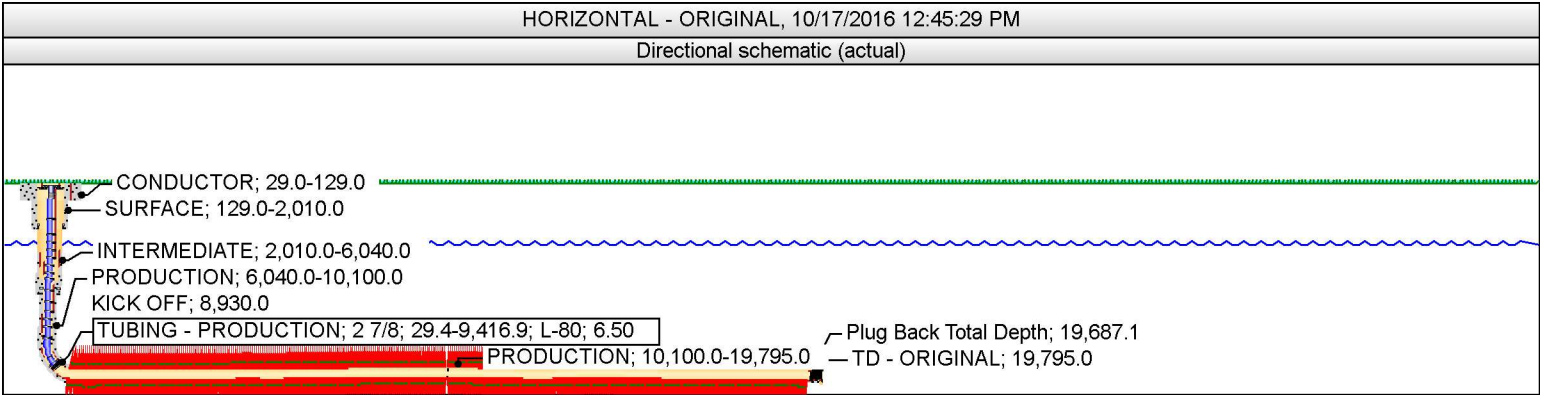
Int #	Cluster #	Date	Type	Top (ftKB)	Top (TVD) (ftKB)	Btm (ftKB)	Btm (TVD) (ftKB)	Job
		8/2/2016 16:21						OCM, 7/15/2016 06:00
41	6	9/3/2016 02:24	CONVENTIONAL PERF	9,802.0	9,467.5	9,804.0	9,467.8	OCM, 7/15/2016 06:00
41	5	9/3/2016 02:23	CONVENTIONAL PERF	9,842.0	9,472.9	9,844.0	9,473.1	OCM, 7/15/2016 06:00
41	4	9/3/2016 02:22	CONVENTIONAL PERF	9,882.0	9,475.6	9,884.0	9,475.7	OCM, 7/15/2016 06:00
41	3	9/3/2016 02:21	CONVENTIONAL PERF	9,922.0	9,476.6	9,924.0	9,476.6	OCM, 7/15/2016 06:00
41	2	9/3/2016 02:20	CONVENTIONAL PERF	9,962.0	9,477.3	9,964.0	9,477.4	OCM, 7/15/2016 06:00
41	1	9/3/2016 02:19	CONVENTIONAL PERF	10,002.0	9,477.9	10,004.0	9,477.9	OCM, 7/15/2016 06:00
40	6	9/2/2016 16:33	CONVENTIONAL PERF	10,042.0	9,478.0	10,044.0	9,478.0	OCM, 7/15/2016 06:00
40	5	9/2/2016 16:32	CONVENTIONAL PERF	10,082.0	9,477.6	10,084.0	9,477.6	OCM, 7/15/2016 06:00
40	4	9/2/2016 16:31	CONVENTIONAL PERF	10,122.0	9,476.8	10,124.0	9,476.8	OCM, 7/15/2016 06:00
40	3	9/2/2016 16:30	CONVENTIONAL PERF	10,162.0	9,475.9	10,164.0	9,475.9	OCM, 7/15/2016 06:00
40	2	9/2/2016 16:29	CONVENTIONAL PERF	10,202.0	9,475.0	10,204.0	9,474.9	OCM, 7/15/2016 06:00
40	1	9/2/2016 16:28	CONVENTIONAL PERF	10,242.0	9,474.0	10,244.0	9,474.0	OCM, 7/15/2016 06:00
39	6	9/2/2016 06:57	CONVENTIONAL PERF	10,282.0	9,473.1	10,284.0	9,473.1	OCM, 7/15/2016 06:00
39	5	9/2/2016 06:56	CONVENTIONAL PERF	10,322.0	9,472.2	10,324.0	9,472.2	OCM, 7/15/2016 06:00
39	4	9/2/2016 06:55	CONVENTIONAL PERF	10,362.0	9,471.3	10,364.0	9,471.3	OCM, 7/15/2016 06:00
39	3	9/2/2016 06:54	CONVENTIONAL PERF	10,402.0	9,470.4	10,404.0	9,470.3	OCM, 7/15/2016 06:00
39	2	9/2/2016 06:53	CONVENTIONAL PERF	10,442.0	9,469.5	10,444.0	9,469.4	OCM, 7/15/2016 06:00
39	1	9/2/2016 06:52	CONVENTIONAL PERF	10,482.0	9,468.6	10,484.0	9,468.5	OCM, 7/15/2016 06:00
38	6	9/1/2016 21:16	CONVENTIONAL PERF	10,522.0	9,467.7	10,524.0	9,467.6	OCM, 7/15/2016 06:00
38	5	9/1/2016 21:15	CONVENTIONAL PERF	10,562.0	9,466.8	10,564.0	9,466.7	OCM, 7/15/2016 06:00
38	4	9/1/2016 21:14	CONVENTIONAL PERF	10,602.0	9,465.8	10,604.0	9,465.8	OCM, 7/15/2016 06:00
38	3	9/1/2016 21:13	CONVENTIONAL PERF	10,642.0	9,464.9	10,644.0	9,464.8	OCM, 7/15/2016 06:00
38	2	9/1/2016 21:12	CONVENTIONAL PERF	10,682.0	9,463.9	10,684.0	9,463.9	OCM, 7/15/2016 06:00
38	1	9/1/2016 21:11	CONVENTIONAL PERF	10,722.0	9,463.1	10,724.0	9,463.0	OCM, 7/15/2016 06:00
37	6	9/1/2016 11:06	CONVENTIONAL PERF	10,762.0	9,462.3	10,764.0	9,462.3	OCM, 7/15/2016 06:00
37	5	9/1/2016 11:05	CONVENTIONAL PERF	10,802.0	9,461.7	10,804.0	9,461.7	OCM, 7/15/2016 06:00
37	4	9/1/2016 11:04	CONVENTIONAL PERF	10,842.0	9,461.4	10,844.0	9,461.4	OCM, 7/15/2016 06:00
37	3	9/1/2016 11:03	CONVENTIONAL PERF	10,882.0	9,461.2	10,884.0	9,461.2	OCM, 7/15/2016 06:00
37	2	9/1/2016 11:02	CONVENTIONAL PERF	10,922.0	9,461.0	10,924.0	9,461.0	OCM, 7/15/2016 06:00
37	1	9/1/2016 11:01	CONVENTIONAL PERF	10,962.0	9,460.8	10,964.0	9,460.8	OCM, 7/15/2016 06:00
36	6	8/31/2016 23:07	CONVENTIONAL PERF	11,002.0	9,460.7	11,004.0	9,460.7	OCM, 7/15/2016 06:00
36	5	8/31/2016 23:06	CONVENTIONAL PERF	11,042.0	9,460.6	11,044.0	9,460.6	OCM, 7/15/2016 06:00
36	4	8/31/2016 23:05	CONVENTIONAL PERF	11,082.0	9,460.5	11,084.0	9,460.5	OCM, 7/15/2016 06:00
36	3	8/31/2016 23:04	CONVENTIONAL PERF	11,122.0	9,460.4	11,124.0	9,460.3	OCM, 7/15/2016 06:00
36	2	8/31/2016 23:03	CONVENTIONAL PERF	11,162.0	9,460.3	11,164.0	9,460.3	OCM, 7/15/2016 06:00
36	1	8/31/2016 23:02	CONVENTIONAL PERF	11,202.0	9,460.5	11,204.0	9,460.5	OCM, 7/15/2016 06:00
35	6	8/31/2016 13:43	CONVENTIONAL PERF	11,242.0	9,460.8	11,244.0	9,460.8	OCM, 7/15/2016 06:00
35	5	8/31/2016 13:42	CONVENTIONAL PERF	11,282.0	9,460.8	11,284.0	9,460.8	OCM, 7/15/2016 06:00
35	4	8/31/2016 13:41	CONVENTIONAL PERF	11,322.0	9,460.5	11,324.0	9,460.5	OCM, 7/15/2016 06:00
35	3	8/31/2016 13:40	CONVENTIONAL PERF	11,362.0	9,460.1	11,364.0	9,460.1	OCM, 7/15/2016 06:00
35	2	8/31/2016 13:39	CONVENTIONAL PERF	11,402.0	9,459.7	11,404.0	9,459.7	OCM, 7/15/2016 06:00
35	1	8/31/2016 13:38	CONVENTIONAL PERF	11,442.0	9,459.2	11,444.0	9,459.2	OCM, 7/15/2016 06:00
34	6	8/31/2016 04:25	CONVENTIONAL PERF	11,482.0	9,458.4	11,484.0	9,458.4	OCM, 7/15/2016 06:00
34	5	8/31/2016 04:24	CONVENTIONAL PERF	11,522.0	9,457.5	11,524.0	9,457.4	OCM, 7/15/2016 06:00
34	4	8/31/2016 04:23	CONVENTIONAL PERF	11,562.0	9,456.5	11,564.0	9,456.5	OCM, 7/15/2016 06:00
34	3	8/31/2016 04:22	CONVENTIONAL PERF	11,602.0	9,455.6	11,604.0	9,455.6	OCM, 7/15/2016 06:00
34	2	8/31/2016 04:21	CONVENTIONAL PERF	11,642.0	9,454.7	11,644.0	9,454.7	OCM, 7/15/2016 06:00
34	1	8/31/2016 04:20	CONVENTIONAL PERF	11,682.0	9,453.8	11,684.0	9,453.7	OCM, 7/15/2016 06:00
33	6	8/30/2016 15:25	CONVENTIONAL PERF	11,722.0	9,452.9	11,724.0	9,452.8	OCM, 7/15/2016 06:00
33	5	8/30/2016 15:24	CONVENTIONAL PERF	11,762.0	9,451.9	11,764.0	9,451.9	OCM, 7/15/2016 06:00
33	4	8/30/2016 15:23	CONVENTIONAL PERF	11,802.0	9,450.9	11,804.0	9,450.9	OCM, 7/15/2016 06:00
33	3	8/30/2016 15:22	CONVENTIONAL PERF	11,842.0	9,450.0	11,844.0	9,450.0	OCM, 7/15/2016 06:00
33	2	8/30/2016 15:21	CONVENTIONAL PERF	11,882.0	9,449.1	11,884.0	9,449.0	OCM, 7/15/2016 06:00
33	1	8/30/2016 15:20	CONVENTIONAL PERF	11,922.0	9,448.2	11,924.0	9,448.1	OCM, 7/15/2016 06:00
32	6	8/30/2016 03:44	CONVENTIONAL PERF	11,962.0	9,447.3	11,964.0	9,447.2	OCM, 7/15/2016 06:00
32	5	8/30/2016 03:43	CONVENTIONAL PERF	12,002.0	9,446.4	12,004.0	9,446.4	OCM, 7/15/2016 06:00
32	4	8/30/2016 03:42	CONVENTIONAL PERF	12,042.0	9,445.7	12,044.0	9,445.6	OCM, 7/15/2016 06:00
32	3	8/30/2016 03:41	CONVENTIONAL PERF	12,082.0	9,445.1	12,084.0	9,445.0	OCM, 7/15/2016 06:00
32	2	8/30/2016 03:40	CONVENTIONAL PERF	12,122.0	9,444.6	12,124.0	9,444.6	OCM, 7/15/2016 06:00
32	1	8/30/2016 03:39	CONVENTIONAL PERF	12,162.0	9,444.3	12,164.0	9,444.2	OCM, 7/15/2016 06:00
31	6	8/29/2016 16:30	CONVENTIONAL PERF	12,202.0	9,444.0	12,204.0	9,444.0	OCM, 7/15/2016 06:00
31	5	8/29/2016 16:29	CONVENTIONAL PERF	12,242.0	9,443.8	12,244.0	9,443.8	OCM, 7/15/2016 06:00
31	4	8/29/2016 16:28	CONVENTIONAL PERF	12,282.0	9,443.7	12,284.0	9,443.7	OCM, 7/15/2016 06:00
31	3	8/29/2016 16:27	CONVENTIONAL PERF	12,322.0	9,443.6	12,324.0	9,443.6	OCM, 7/15/2016 06:00
31	2	8/29/2016 16:26	CONVENTIONAL PERF	12,362.0	9,443.4	12,364.0	9,443.4	OCM, 7/15/2016 06:00



Perforations								
Int #	Cluster #	Date	Type	Top (ftKB)	Top (TVD) (ftKB)	Btm (ftKB)	Btm (TVD) (ftKB)	Job
31	1	8/29/2016 16:25	CONVENTIONAL PERF	12,402.0	9,443.3	12,404.0	9,443.2	OCM, 7/15/2016 06:00
30	6	8/29/2016 06:06	CONVENTIONAL PERF	12,442.0	9,443.1	12,444.0	9,443.0	OCM, 7/15/2016 06:00
30	5	8/29/2016 06:05	CONVENTIONAL PERF	12,482.0	9,442.9	12,484.0	9,442.9	OCM, 7/15/2016 06:00
30	4	8/29/2016 06:04	CONVENTIONAL PERF	12,522.0	9,442.7	12,524.0	9,442.7	OCM, 7/15/2016 06:00
30	3	8/29/2016 06:03	CONVENTIONAL PERF	12,562.0	9,442.5	12,564.0	9,442.5	OCM, 7/15/2016 06:00
30	2	8/29/2016 06:02	CONVENTIONAL PERF	12,602.0	9,442.1	12,604.0	9,442.0	OCM, 7/15/2016 06:00
30	1	8/29/2016 06:01	CONVENTIONAL PERF	12,642.0	9,441.5	12,644.0	9,441.4	OCM, 7/15/2016 06:00
29	6	8/28/2016 17:17	CONVENTIONAL PERF	12,682.0	9,440.7	12,684.0	9,440.7	OCM, 7/15/2016 06:00
29	5	8/28/2016 17:16	CONVENTIONAL PERF	12,722.0	9,439.8	12,724.0	9,439.8	OCM, 7/15/2016 06:00
29	4	8/28/2016 17:15	CONVENTIONAL PERF	12,762.0	9,438.9	12,764.0	9,438.8	OCM, 7/15/2016 06:00
29	3	8/28/2016 17:14	CONVENTIONAL PERF	12,802.0	9,437.8	12,804.0	9,437.8	OCM, 7/15/2016 06:00
29	2	8/28/2016 17:13	CONVENTIONAL PERF	12,842.0	9,436.8	12,844.0	9,436.8	OCM, 7/15/2016 06:00
29	1	8/28/2016 17:12	CONVENTIONAL PERF	12,882.0	9,436.3	12,884.0	9,436.3	OCM, 7/15/2016 06:00
28	6	8/28/2016 06:22	CONVENTIONAL PERF	12,922.0	9,436.0	12,924.0	9,436.0	OCM, 7/15/2016 06:00
28	5	8/28/2016 06:21	CONVENTIONAL PERF	12,962.0	9,435.6	12,964.0	9,435.6	OCM, 7/15/2016 06:00
28	4	8/28/2016 06:20	CONVENTIONAL PERF	13,002.0	9,434.9	13,004.0	9,434.9	OCM, 7/15/2016 06:00
28	3	8/28/2016 06:19	CONVENTIONAL PERF	13,042.0	9,434.1	13,044.0	9,434.0	OCM, 7/15/2016 06:00
28	2	8/28/2016 06:18	CONVENTIONAL PERF	13,082.0	9,433.3	13,084.0	9,433.2	OCM, 7/15/2016 06:00
28	1	8/28/2016 06:17	CONVENTIONAL PERF	13,122.0	9,432.5	13,124.0	9,432.5	OCM, 7/15/2016 06:00
27	6	8/27/2016 20:32	CONVENTIONAL PERF	13,162.0	9,431.8	13,164.0	9,431.8	OCM, 7/15/2016 06:00
27	5	8/27/2016 20:31	CONVENTIONAL PERF	13,202.0	9,431.2	13,204.0	9,431.2	OCM, 7/15/2016 06:00
27	4	8/27/2016 20:30	CONVENTIONAL PERF	13,242.0	9,430.4	13,244.0	9,430.3	OCM, 7/15/2016 06:00
27	3	8/27/2016 20:29	CONVENTIONAL PERF	13,282.0	9,429.3	13,284.0	9,429.3	OCM, 7/15/2016 06:00
27	2	8/27/2016 20:28	CONVENTIONAL PERF	13,322.0	9,428.3	13,324.0	9,428.2	OCM, 7/15/2016 06:00
27	1	8/27/2016 20:27	CONVENTIONAL PERF	13,362.0	9,427.4	13,364.0	9,427.3	OCM, 7/15/2016 06:00
26	6	8/27/2016 10:28	CONVENTIONAL PERF	13,402.0	9,426.5	13,404.0	9,426.4	OCM, 7/15/2016 06:00
26	5	8/27/2016 10:27	CONVENTIONAL PERF	13,442.0	9,425.5	13,444.0	9,425.5	OCM, 7/15/2016 06:00
26	4	8/27/2016 10:26	CONVENTIONAL PERF	13,482.0	9,424.5	13,484.0	9,424.5	OCM, 7/15/2016 06:00
26	3	8/27/2016 10:25	CONVENTIONAL PERF	13,522.0	9,423.5	13,524.0	9,423.5	OCM, 7/15/2016 06:00
26	2	8/27/2016 10:24	CONVENTIONAL PERF	13,562.0	9,422.6	13,564.0	9,422.5	OCM, 7/15/2016 06:00
26	1	8/27/2016 10:23	CONVENTIONAL PERF	13,602.0	9,421.8	13,604.0	9,421.8	OCM, 7/15/2016 06:00
25	6	8/26/2016 23:37	CONVENTIONAL PERF	13,642.0	9,421.2	13,644.0	9,421.1	OCM, 7/15/2016 06:00
25	5	8/26/2016 23:36	CONVENTIONAL PERF	13,682.0	9,420.6	13,684.0	9,420.5	OCM, 7/15/2016 06:00
25	4	8/26/2016 23:35	CONVENTIONAL PERF	13,722.0	9,419.6	13,724.0	9,419.5	OCM, 7/15/2016 06:00
25	3	8/26/2016 23:34	CONVENTIONAL PERF	13,762.0	9,418.2	13,764.0	9,418.2	OCM, 7/15/2016 06:00
25	2	8/26/2016 23:33	CONVENTIONAL PERF	13,802.0	9,417.2	13,804.0	9,417.2	OCM, 7/15/2016 06:00
25	1	8/26/2016 23:32	CONVENTIONAL PERF	13,842.0	9,416.8	13,844.0	9,416.8	OCM, 7/15/2016 06:00
24	6	8/26/2016 08:56	CONVENTIONAL PERF	13,882.0	9,416.5	13,884.0	9,416.4	OCM, 7/15/2016 06:00
24	5	8/26/2016 08:55	CONVENTIONAL PERF	13,922.0	9,415.7	13,924.0	9,415.6	OCM, 7/15/2016 06:00
24	4	8/26/2016 08:54	CONVENTIONAL PERF	13,962.0	9,414.6	13,964.0	9,414.5	OCM, 7/15/2016 06:00
24	3	8/26/2016 08:53	CONVENTIONAL PERF	14,002.0	9,413.4	14,004.0	9,413.3	OCM, 7/15/2016 06:00
24	2	8/26/2016 08:52	CONVENTIONAL PERF	14,042.0	9,412.2	14,044.0	9,412.1	OCM, 7/15/2016 06:00
24	1	8/26/2016 08:51	CONVENTIONAL PERF	14,082.0	9,411.0	14,084.0	9,410.9	OCM, 7/15/2016 06:00
23	6	8/25/2016 23:06	CONVENTIONAL PERF	14,122.0	9,410.0	14,124.0	9,409.9	OCM, 7/15/2016 06:00
23	5	8/25/2016 23:05	CONVENTIONAL PERF	14,162.0	9,409.0	14,164.0	9,408.9	OCM, 7/15/2016 06:00
23	4	8/25/2016 23:04	CONVENTIONAL PERF	14,202.0	9,408.0	14,204.0	9,408.0	OCM, 7/15/2016 06:00
23	3	8/25/2016 23:03	CONVENTIONAL PERF	14,242.0	9,407.0	14,244.0	9,406.9	OCM, 7/15/2016 06:00
23	2	8/25/2016 23:02	CONVENTIONAL PERF	14,282.0	9,405.7	14,284.0	9,405.7	OCM, 7/15/2016 06:00
23	1	8/25/2016 23:01	CONVENTIONAL PERF	14,322.0	9,404.3	14,324.0	9,404.2	OCM, 7/15/2016 06:00
22	6	8/25/2016 12:26	CONVENTIONAL PERF	14,362.0	9,403.1	14,364.0	9,403.0	OCM, 7/15/2016 06:00
22	5	8/25/2016 12:25	CONVENTIONAL PERF	14,402.0	9,402.3	14,404.0	9,402.3	OCM, 7/15/2016 06:00
22	4	8/25/2016 12:24	CONVENTIONAL PERF	14,442.0	9,401.8	14,444.0	9,401.8	OCM, 7/15/2016 06:00
22	3	8/25/2016 12:23	CONVENTIONAL PERF	14,482.0	9,401.6	14,484.0	9,401.6	OCM, 7/15/2016 06:00
22	2	8/25/2016 12:22	CONVENTIONAL PERF	14,522.0	9,401.5	14,524.0	9,401.5	OCM, 7/15/2016 06:00
22	1	8/25/2016 12:21	CONVENTIONAL PERF	14,562.0	9,401.7	14,564.0	9,401.7	OCM, 7/15/2016 06:00
21	6	8/25/2016 02:35	CONVENTIONAL PERF	14,602.0	9,402.1	14,604.0	9,402.1	OCM, 7/15/2016 06:00
21	5	8/25/2016 02:34	CONVENTIONAL PERF	14,642.0	9,402.4	14,644.0	9,402.4	OCM, 7/15/2016 06:00
21	4	8/25/2016 02:33	CONVENTIONAL PERF	14,682.0	9,402.5	14,684.0	9,402.5	OCM, 7/15/2016 06:00
21	3	8/25/2016 02:32	CONVENTIONAL PERF	14,722.0	9,402.7	14,724.0	9,402.7	OCM, 7/15/2016 06:00
21	2	8/25/2016 02:31	CONVENTIONAL PERF	14,762.0	9,402.9	14,764.0	9,402.9	OCM, 7/15/2016 06:00
21	1	8/25/2016 02:30	CONVENTIONAL PERF	14,802.0	9,403.2	14,804.0	9,403.2	OCM, 7/15/2016 06:00
20	6	8/24/2016 15:43	CONVENTIONAL PERF	14,842.0	9,403.5	14,844.0	9,403.5	OCM, 7/15/2016 06:00
20	5	8/24/2016 15:42	CONVENTIONAL PERF	14,882.0	9,403.6	14,884.0	9,403.6	OCM, 7/15/2016 06:00
20	4	8/24/2016 15:41	CONVENTIONAL PERF	14,922.0	9,403.5	14,924.0	9,403.5	OCM, 7/15/2016 06:00
20	3	8/24/2016 15:40	CONVENTIONAL PERF	14,962.0	9,403.1	14,964.0	9,403.0	OCM, 7/15/2016 06:00
20	2	8/24/2016 15:39	CONVENTIONAL PERF	15,002.0	9,402.5	15,004.0	9,402.5	OCM, 7/15/2016 06:00
20	1	8/24/2016 15:38	CONVENTIONAL PERF	15,042.0	9,402.2	15,044.0	9,402.2	OCM, 7/15/2016 06:00



Perforations								
Int #	Cluster #	Date	Type	Top (ftKB)	Top (TVD) (ftKB)	Btm (ftKB)	Btm (TVD) (ftKB)	Job
19	6	8/23/2016 05:32	CONVENTIONAL PERF	15,082.0	9,402.1	15,084.0	9,402.1	OCM, 7/15/2016 06:00
19	5	8/23/2016 05:32	CONVENTIONAL PERF	15,122.0	9,402.2	15,124.0	9,402.2	OCM, 7/15/2016 06:00
19	4	8/23/2016 05:32	CONVENTIONAL PERF	15,162.0	9,402.6	15,164.0	9,402.7	OCM, 7/15/2016 06:00
19	3	8/23/2016 05:31	CONVENTIONAL PERF	15,202.0	9,403.1	15,204.0	9,403.1	OCM, 7/15/2016 06:00
19	2	8/23/2016 05:31	CONVENTIONAL PERF	15,242.0	9,403.5	15,244.0	9,403.5	OCM, 7/15/2016 06:00
19	1	8/23/2016 05:30	CONVENTIONAL PERF	15,282.0	9,403.8	15,284.0	9,403.8	OCM, 7/15/2016 06:00
18	6	8/22/2016 22:09	CONVENTIONAL PERF	15,322.0	9,404.2	15,324.0	9,404.2	OCM, 7/15/2016 06:00
18	5	8/22/2016 22:09	CONVENTIONAL PERF	15,362.0	9,404.5	15,364.0	9,404.5	OCM, 7/15/2016 06:00
18	4	8/22/2016 22:08	CONVENTIONAL PERF	15,402.0	9,404.9	15,404.0	9,405.0	OCM, 7/15/2016 06:00
18	3	8/22/2016 22:08	CONVENTIONAL PERF	15,442.0	9,405.4	15,444.0	9,405.4	OCM, 7/15/2016 06:00
18	2	8/22/2016 22:07	CONVENTIONAL PERF	15,482.0	9,405.7	15,484.0	9,405.7	OCM, 7/15/2016 06:00
18	1	8/22/2016 22:07	CONVENTIONAL PERF	15,522.0	9,405.7	15,524.0	9,405.7	OCM, 7/15/2016 06:00
17	6	8/22/2016 09:36	CONVENTIONAL PERF	15,562.0	9,405.6	15,564.0	9,405.5	OCM, 7/15/2016 06:00
17	5	8/22/2016 09:36	CONVENTIONAL PERF	15,602.0	9,405.3	15,604.0	9,405.3	OCM, 7/15/2016 06:00
17	4	8/22/2016 09:36	CONVENTIONAL PERF	15,642.0	9,404.9	15,644.0	9,404.9	OCM, 7/15/2016 06:00
17	3	8/22/2016 09:36	CONVENTIONAL PERF	15,682.0	9,404.6	15,684.0	9,404.5	OCM, 7/15/2016 06:00
17	2	8/22/2016 09:36	CONVENTIONAL PERF	15,722.0	9,404.2	15,724.0	9,404.1	OCM, 7/15/2016 06:00
17	1	8/22/2016 09:36	CONVENTIONAL PERF	15,762.0	9,403.5	15,764.0	9,403.5	OCM, 7/15/2016 06:00
16	6	8/21/2016 22:33	CONVENTIONAL PERF	15,802.0	9,402.7	15,804.0	9,402.6	OCM, 7/15/2016 06:00
16	5	8/21/2016 22:33	CONVENTIONAL PERF	15,842.0	9,401.7	15,844.0	9,401.6	OCM, 7/15/2016 06:00
16	4	8/21/2016 22:32	CONVENTIONAL PERF	15,882.0	9,400.8	15,884.0	9,400.8	OCM, 7/15/2016 06:00
16	3	8/21/2016 22:32	CONVENTIONAL PERF	15,922.0	9,400.2	15,924.0	9,400.1	OCM, 7/15/2016 06:00
16	2	8/21/2016 22:31	CONVENTIONAL PERF	15,962.0	9,399.7	15,964.0	9,399.7	OCM, 7/15/2016 06:00
16	1	8/21/2016 22:31	CONVENTIONAL PERF	16,002.0	9,399.6	16,004.0	9,399.6	OCM, 7/15/2016 06:00
15	6	8/21/2016 09:03	CONVENTIONAL PERF	16,042.0	9,399.6	16,044.0	9,399.6	OCM, 7/15/2016 06:00
15	5	8/21/2016 09:03	CONVENTIONAL PERF	16,082.0	9,399.8	16,084.0	9,399.9	OCM, 7/15/2016 06:00
15	4	8/21/2016 09:03	CONVENTIONAL PERF	16,122.0	9,400.0	16,124.0	9,400.0	OCM, 7/15/2016 06:00
15	3	8/21/2016 09:03	CONVENTIONAL PERF	16,162.0	9,399.7	16,164.0	9,399.7	OCM, 7/15/2016 06:00
15	2	8/21/2016 09:03	CONVENTIONAL PERF	16,202.0	9,398.9	16,204.0	9,398.9	OCM, 7/15/2016 06:00
15	1	8/21/2016 09:03	CONVENTIONAL PERF	16,242.0	9,398.0	16,244.0	9,397.9	OCM, 7/15/2016 06:00
14	6	8/20/2016 22:29	CONVENTIONAL PERF	16,282.0	9,397.0	16,284.0	9,396.9	OCM, 7/15/2016 06:00
14	5	8/20/2016 22:29	CONVENTIONAL PERF	16,322.0	9,396.0	16,324.0	9,395.9	OCM, 7/15/2016 06:00
14	4	8/20/2016 22:29	CONVENTIONAL PERF	16,362.0	9,395.0	16,364.0	9,395.0	OCM, 7/15/2016 06:00
14	3	8/20/2016 22:28	CONVENTIONAL PERF	16,402.0	9,394.1	16,404.0	9,394.1	OCM, 7/15/2016 06:00
14	2	8/20/2016 22:28	CONVENTIONAL PERF	16,442.0	9,393.2	16,444.0	9,393.1	OCM, 7/15/2016 06:00
14	1	8/20/2016 12:48	CONVENTIONAL PERF	16,482.0	9,392.2	16,484.0	9,392.2	OCM, 7/15/2016 06:00
13	6	8/20/2016 12:48	CONVENTIONAL PERF	16,522.0	9,391.3	16,524.0	9,391.3	OCM, 7/15/2016 06:00
13	5	8/20/2016 12:48	CONVENTIONAL PERF	16,562.0	9,390.5	16,564.0	9,390.5	OCM, 7/15/2016 06:00
13	4	8/20/2016 12:48	CONVENTIONAL PERF	16,602.0	9,389.9	16,604.0	9,389.8	OCM, 7/15/2016 06:00
13	3	8/20/2016 12:48	CONVENTIONAL PERF	16,642.0	9,389.4	16,644.0	9,389.4	OCM, 7/15/2016 06:00
13	2	8/20/2016 12:48	CONVENTIONAL PERF	16,682.0	9,389.2	16,684.0	9,389.1	OCM, 7/15/2016 06:00
13	1	8/20/2016 12:48	CONVENTIONAL PERF	16,722.0	9,389.0	16,724.0	9,388.9	OCM, 7/15/2016 06:00
12	6	8/20/2016 01:32	CONVENTIONAL PERF	16,762.0	9,388.8	16,764.0	9,388.8	OCM, 7/15/2016 06:00
12	5	8/20/2016 01:32	CONVENTIONAL PERF	16,802.0	9,388.7	16,804.0	9,388.7	OCM, 7/15/2016 06:00
12	4	8/20/2016 01:32	CONVENTIONAL PERF	16,842.0	9,388.5	16,844.0	9,388.5	OCM, 7/15/2016 06:00
12	3	8/20/2016 01:31	CONVENTIONAL PERF	16,882.0	9,388.3	16,884.0	9,388.3	OCM, 7/15/2016 06:00
12	2	8/20/2016 01:31	CONVENTIONAL PERF	16,922.0	9,388.1	16,924.0	9,388.0	OCM, 7/15/2016 06:00
12	1	8/20/2016 01:31	CONVENTIONAL PERF	16,962.0	9,387.7	16,964.0	9,387.7	OCM, 7/15/2016 06:00
11	6	8/19/2016 12:16	CONVENTIONAL PERF	17,002.0	9,387.5	17,004.0	9,387.5	OCM, 7/15/2016 06:00
11	5	8/19/2016 12:16	CONVENTIONAL PERF	17,042.0	9,387.4	17,044.0	9,387.4	OCM, 7/15/2016 06:00
11	4	8/19/2016 12:16	CONVENTIONAL PERF	17,082.0	9,387.2	17,084.0	9,387.2	OCM, 7/15/2016 06:00
11	3	8/19/2016 12:16	CONVENTIONAL PERF	17,122.0	9,386.8	17,124.0	9,386.8	OCM, 7/15/2016 06:00
11	2	8/19/2016 12:16	CONVENTIONAL PERF	17,162.0	9,386.4	17,164.0	9,386.3	OCM, 7/15/2016 06:00
11	1	8/19/2016 12:16	CONVENTIONAL PERF	17,202.0	9,386.0	17,204.0	9,386.0	OCM, 7/15/2016 06:00
10	6	8/19/2016 02:13	CONVENTIONAL PERF	17,242.0	9,385.7	17,244.0	9,385.7	OCM, 7/15/2016 06:00
10	5	8/19/2016 02:13	CONVENTIONAL PERF	17,282.0	9,385.5	17,284.0	9,385.5	OCM, 7/15/2016 06:00
10	4	8/19/2016 02:12	CONVENTIONAL PERF	17,322.0	9,385.3	17,324.0	9,385.2	OCM, 7/15/2016 06:00
10	3	8/19/2016 02:12	CONVENTIONAL PERF	17,362.0	9,385.0	17,364.0	9,385.0	OCM, 7/15/2016 06:00
10	2	8/19/2016 02:11	CONVENTIONAL PERF	17,402.0	9,384.6	17,404.0	9,384.6	OCM, 7/15/2016 06:00
10	1	8/19/2016 02:11	CONVENTIONAL PERF	17,442.0	9,384.3	17,444.0	9,384.3	OCM, 7/15/2016 06:00
9	6	8/18/2016 16:00	CONVENTIONAL PERF	17,482.0	9,384.2	17,484.0	9,384.2	OCM, 7/15/2016 06:00
9	5	8/18/2016 16:00	CONVENTIONAL PERF	17,522.0	9,384.4	17,524.0	9,384.4	OCM, 7/15/2016 06:00
9	4	8/18/2016 16:00	CONVENTIONAL PERF	17,562.0	9,384.8	17,564.0	9,384.8	OCM, 7/15/2016 06:00
9	3	8/18/2016 16:00	CONVENTIONAL PERF	17,602.0	9,385.4	17,604.0	9,385.4	OCM, 7/15/2016 06:00
9	2	8/18/2016 16:00	CONVENTIONAL PERF	17,642.0	9,385.9	17,644.0	9,385.9	OCM, 7/15/2016 06:00
9	1	8/18/2016 16:00	CONVENTIONAL PERF	17,682.0	9,386.4	17,684.0	9,386.4	OCM, 7/15/2016 06:00
8	6	8/18/2016 02:20	CONVENTIONAL PERF	17,722.0	9,386.7	17,724.0	9,386.8	OCM, 7/15/2016 06:00



Perforations								
Int #	Cluster #	Date	Type	Top (ftKB)	Top (TVD) (ftKB)	Btm (ftKB)	Btm (TVD) (ftKB)	Job
8	5	8/18/2016 02:19	CONVENTIONAL PERF	17,762.0	9,387.0	17,764.0	9,387.0	OCM, 7/15/2016 06:00
8	4	8/18/2016 02:19	CONVENTIONAL PERF	17,802.0	9,387.1	17,804.0	9,387.1	OCM, 7/15/2016 06:00
8	3	8/18/2016 02:19	CONVENTIONAL PERF	17,842.0	9,387.2	17,844.0	9,387.2	OCM, 7/15/2016 06:00
8	2	8/18/2016 02:18	CONVENTIONAL PERF	17,882.0	9,387.3	17,884.0	9,387.3	OCM, 7/15/2016 06:00
8	1	8/18/2016 02:18	CONVENTIONAL PERF	17,922.0	9,387.3	17,924.0	9,387.3	OCM, 7/15/2016 06:00
7	6	8/17/2016 15:34	CONVENTIONAL PERF	17,962.0	9,387.2	17,964.0	9,387.2	OCM, 7/15/2016 06:00
7	5	8/17/2016 15:33	CONVENTIONAL PERF	18,002.0	9,387.0	18,004.0	9,387.0	OCM, 7/15/2016 06:00
7	4	8/17/2016 15:32	CONVENTIONAL PERF	18,042.0	9,386.5	18,044.0	9,386.5	OCM, 7/15/2016 06:00
7	3	8/17/2016 15:31	CONVENTIONAL PERF	18,082.0	9,385.9	18,084.0	9,385.8	OCM, 7/15/2016 06:00
7	2	8/17/2016 15:30	CONVENTIONAL PERF	18,122.0	9,385.4	18,124.0	9,385.4	OCM, 7/15/2016 06:00
7	1	8/17/2016 15:29	CONVENTIONAL PERF	18,162.0	9,385.1	18,164.0	9,385.1	OCM, 7/15/2016 06:00
6	6	8/17/2016 02:53	CONVENTIONAL PERF	18,202.0	9,384.8	18,204.0	9,384.8	OCM, 7/15/2016 06:00
6	5	8/17/2016 02:52	CONVENTIONAL PERF	18,242.0	9,384.2	18,244.0	9,384.2	OCM, 7/15/2016 06:00
6	4	8/17/2016 02:51	CONVENTIONAL PERF	18,282.0	9,383.6	18,284.0	9,383.6	OCM, 7/15/2016 06:00
6	3	8/17/2016 02:50	CONVENTIONAL PERF	18,322.0	9,383.0	18,324.0	9,383.0	OCM, 7/15/2016 06:00
6	2	8/17/2016 02:49	CONVENTIONAL PERF	18,362.0	9,382.6	18,364.0	9,382.6	OCM, 7/15/2016 06:00
6	1	8/17/2016 02:48	CONVENTIONAL PERF	18,402.0	9,382.6	18,404.0	9,382.6	OCM, 7/15/2016 06:00
5	6	8/16/2016 15:08	CONVENTIONAL PERF	18,442.0	9,383.1	18,444.0	9,383.2	OCM, 7/15/2016 06:00
5	5	8/16/2016 15:07	CONVENTIONAL PERF	18,482.0	9,383.7	18,484.0	9,383.8	OCM, 7/15/2016 06:00
5	4	8/16/2016 15:06	CONVENTIONAL PERF	18,522.0	9,384.2	18,524.0	9,384.2	OCM, 7/15/2016 06:00
5	3	8/16/2016 15:05	CONVENTIONAL PERF	18,562.0	9,384.5	18,564.0	9,384.5	OCM, 7/15/2016 06:00
5	2	8/16/2016 15:04	CONVENTIONAL PERF	18,602.0	9,384.9	18,604.0	9,384.9	OCM, 7/15/2016 06:00
5	1	8/16/2016 15:03	CONVENTIONAL PERF	18,642.0	9,385.3	18,644.0	9,385.3	OCM, 7/15/2016 06:00
4	6	8/16/2016 06:58	CONVENTIONAL PERF	18,682.0	9,385.5	18,684.0	9,385.5	OCM, 7/15/2016 06:00
4	5	8/16/2016 06:58	CONVENTIONAL PERF	18,722.0	9,385.4	18,724.0	9,385.4	OCM, 7/15/2016 06:00
4	4	8/16/2016 06:58	CONVENTIONAL PERF	18,762.0	9,385.3	18,764.0	9,385.2	OCM, 7/15/2016 06:00
4	3	8/16/2016 06:58	CONVENTIONAL PERF	18,802.0	9,385.1	18,804.0	9,385.1	OCM, 7/15/2016 06:00
4	2	8/16/2016 06:58	CONVENTIONAL PERF	18,842.0	9,385.0	18,844.0	9,384.9	OCM, 7/15/2016 06:00
4	1	8/16/2016 06:58	CONVENTIONAL PERF	18,882.0	9,384.7	18,884.0	9,384.7	OCM, 7/15/2016 06:00
3	6	8/15/2016 21:27	CONVENTIONAL PERF	18,922.0	9,384.5	18,924.0	9,384.5	OCM, 7/15/2016 06:00
3	5	8/15/2016 21:26	CONVENTIONAL PERF	18,962.0	9,384.5	18,964.0	9,384.5	OCM, 7/15/2016 06:00
3	4	8/15/2016 21:25	CONVENTIONAL PERF	19,002.0	9,384.7	19,004.0	9,384.7	OCM, 7/15/2016 06:00
3	3	8/15/2016 21:24	CONVENTIONAL PERF	19,042.0	9,384.6	19,044.0	9,384.6	OCM, 7/15/2016 06:00
3	2	8/15/2016 21:23	CONVENTIONAL PERF	19,082.0	9,384.0	19,084.0	9,384.0	OCM, 7/15/2016 06:00
3	1	8/15/2016 21:22	CONVENTIONAL PERF	19,122.0	9,383.2	19,124.0	9,383.1	OCM, 7/15/2016 06:00
2	6	8/15/2016 11:03	CONVENTIONAL PERF	19,162.0	9,382.6	19,164.0	9,382.6	OCM, 7/15/2016 06:00
2	5	8/15/2016 11:03	CONVENTIONAL PERF	19,202.0	9,382.2	19,204.0	9,382.2	OCM, 7/15/2016 06:00
2	4	8/15/2016 11:03	CONVENTIONAL PERF	19,242.0	9,382.0	19,244.0	9,382.0	OCM, 7/15/2016 06:00
2	3	8/15/2016 11:03	CONVENTIONAL PERF	19,282.0	9,381.9	19,284.0	9,381.9	OCM, 7/15/2016 06:00
2	2	8/15/2016 11:03	CONVENTIONAL PERF	19,322.0	9,381.8	19,324.0	9,381.8	OCM, 7/15/2016 06:00
2	1	8/15/2016 11:03	CONVENTIONAL PERF	19,362.0	9,381.6	19,364.0	9,381.6	OCM, 7/15/2016 06:00
1	6	8/2/2016 16:26	CONVENTIONAL PERF	19,402.0	9,381.4	19,404.0	9,381.4	OCM, 7/15/2016 06:00
1	5	8/2/2016 16:25	CONVENTIONAL PERF	19,442.0	9,381.2	19,444.0	9,381.2	OCM, 7/15/2016 06:00
1	4	8/2/2016 16:24	CONVENTIONAL PERF	19,482.0	9,381.1	19,484.0	9,381.1	OCM, 7/15/2016 06:00
1	3	8/2/2016 16:23	CONVENTIONAL PERF	19,522.0	9,380.9	19,524.0	9,380.9	OCM, 7/15/2016 06:00
1	2	8/2/2016 16:22	CONVENTIONAL PERF	19,562.0	9,380.7	19,564.0	9,380.7	OCM, 7/15/2016 06:00
1	1	8/2/2016 16:21	CONVENTIONAL PERF	19,602.0	9,380.5	19,604.0	9,380.5	OCM, 7/15/2016 06:00