



RAILROAD COMMISSION OF TEXAS

Form W-2

1701 N. Congress
P.O. Box 12967
Austin, Texas 78701-2967

Status: Approved
Date: 11/02/2016
Tracking No.: 160475

OIL WELL POTENTIAL TEST, COMPLETION OR RECOMPLETION REPORT,

OPERATOR INFORMATION			
Operator	PIONEER NATURAL RES. USA, INC.	Operator	665748
Operator	AMBER MCFADDEN PO BOX 3178 MIDLAND, TX 79702-0000		

WELL INFORMATION			
API	42-003-47294	County:	ANDREWS
Well No.:	43H	RRC District	08
Lease	UNIVERSITY "7-43"	Field	SPRABERRY (TREND AREA)
RRC Lease	40532	Field No.:	85280300
Location	Section: 36, Block: 7, Survey: UL, Abstract: U211		
Latitude		Longitud	
This well is	17.2	miles in a	EAST
direction from	ANDREWS,		
which is the nearest town in the			

FILING INFORMATION			
Purpose of	Initial Potential		
Type of	Other/Recompletion		
Well Type:	Producing	Completion or Recompletion	07/14/2016
Type of Permit	Date	Permit No.	
Permit to Drill, Plug Back, or	11/19/2015	812044	
Rule 37 Exception			
Fluid Injection			
O&G Waste Disposal			
Other:			

COMPLETION INFORMATION			
Spud	02/07/2016	Date of first production after rig	07/14/2016
Date plug back, deepening, drilling operation	04/22/2016	Date plug back, deepening, recompletion, drilling operation	06/08/2016
Number of producing wells on this lease this field (reservoir) including this	21	Distance to nearest well in lease & reservoir	653.0
Total number of acres in	6615.70	Elevation	2989 RKB
Total depth TVD	9507	Total depth MD	20165
Plug back depth TVD		Plug back depth MD	
Was directional survey made other inclination (Form W-	Yes	Rotation time within surface casing Is Cementing Affidavit (Form W-15)	47.2 Yes
Recompletion or	Yes	Multiple	No
Type(s) of electric or other log(s)	Acceptable cased hole logs		
Electric Log Other Description:			
Location of well, relative to nearest lease of lease on which this well is	10261.0 Feet from the	Off Lease :	No
	3375.0 Feet from the	South Line and	
		West Line of the	
		UNIVERSITY 7-43 Lease.	

FORMER FIELD (WITH RESERVOIR) & GAS ID OR OIL LEASE NO.			
Field & Reservoir	Gas ID or Oil Lease	Well No.	Prior Service Type
PACKET:	N/A		

W2:	N/A		
FOR NEW DRILL OR RE-ENTRY, SURFACE CASING DEPTH DETERMINED BY:			
GAU Groundwater Protection Determination	Depth	1750.0	Date 11/18/2015
SWR 13 Exception	Depth	2000.0	

INITIAL POTENTIAL TEST DATA FOR NEW COMPLETION OR RECOMPLETION			
Date of	07/29/2016	Production	Gas Lift
Number of hours	24	Choke	
Was swab used during this	No	Oil produced prior to	11029.00
PRODUCTION DURING TEST PERIOD:			
Oil	1157.00	Gas	663
Gas - Oil	573	Flowing Tubing	
Water	1138		
CALCULATED 24-HOUR RATE			
Oil	1157.0	Gas	663
Oil Gravity - API - 60.:	40.3	Casing	
Water	1138		

CASING RECORD											
Ro	Type of Casing	Casing	Hole	Setting	Multi -	Multi -	Cement	Cement	Slurry	Top of	TOC
		Size (in.)	Size	Depth	Stage Tool	Stage Shoe	Class	Amoun	Volume (cu.	Cement (ft.)	Determined By
1	Surface	13 3/8	17 1/2	1922			CLASS C	1693	2850.0	0	Circulated to Surface
2	Intermediate	9 5/8	12 1/4	6040			TXI & H	1071	1897.5	3665	Calculation
3	Conventional Production	5 1/2	8 3/4	20133			TXI	2042	3632.0	3270	Cement Evaluation Log

LINER RECORD									
<u>Ro</u>	<u>Liner Size</u>	<u>Hole Size</u>	<u>Liner Top</u>	<u>Liner Bottom</u>	<u>Cement Class</u>	<u>Cement Amoun</u>	<u>Slurry Volume (cu.</u>	<u>Top of Cement (ft.)</u>	<u>TOC Determined</u>
N/A									

TUBING RECORD			
<u>Ro</u>	<u>Size (in.)</u>	<u>Depth</u>	<u>Size (ft.)</u>
1	2 7/8	9415	
			<u>Packer Depth (ft.)/Type</u>
			/

PRODUCING/INJECTION/DISPOSAL INTERVAL			
<u>Ro</u>	<u>Open hole?</u>	<u>From (ft.)</u>	<u>To (ft.)</u>
1	No	L1 9729	19994.0

ACID, FRACTURE, CEMENT SQUEEZE, CAST IRON BRIDGE PLUG, RETAINER, ETC.			
Was hydraulic fracturing treatment	Yes		
Is well equipped with a downhole sleeve?	Yes	If yes, actuation pressure	9500.0
Production casing test pressure (PSIG) hydraulic fracturing	9500	Actual maximum pressure (PSIG) during fracturin	9258
Has the hydraulic fracturing fluid disclosure been	Yes		
<u>Ro</u>	<u>Type of Operation</u>	<u>Amount and Kind of Material Used</u>	<u>Depth Interval (ft.)</u>

FORMATION RECORD					
<u>Formations</u>	<u>Encountere</u>	<u>Depth TVD</u>	<u>Depth MD</u>	<u>Is formation</u>	<u>Remarks</u>
YATES	Yes	3165.0	3165.0	No	SEE REMARK
SEVEN RIVERS	No			No	FORMATION DOES NOT EXIST IN THIS AREA
QUEEN	Yes	4175.0	4175.0	No	SEE REMARK
GRAYBURG	Yes	4668.0	4668.0	Yes	
SAN ANDRES - CO2 FLOOD, HIGH FLOWS, H2S, CORROSIVE HOLT	Yes	4825.0	4825.0	Yes	
	No			No	FORMATION DOES NOT EXIST IN THIS AREA
	No			No	FORMATION DOES NOT EXIST IN THIS AREA
	No			No	FORMATION DOES NOT EXIST IN THIS AREA
CLEARFORK	Yes	6814.0	6814.0	Yes	
PERMIAN DETRITAL	No			No	FORMATION DOES NOT EXIST IN THIS AREA
LEON	No			No	FORMATION DOES NOT EXIST IN THIS AREA
WICHITA ALBANY	No			No	FORMATION DOES NOT EXIST IN THIS AREA
SPRABERRY	Yes	8434.0	8434.0	Yes	
DEAN	No			No	FORMATION BELOW TVD
WOLFCAMP	No			No	FORMATION BELOW TVD
CANYON	No			No	FORMATION BELOW TVD
PENNSYLVANIAN	No			No	FORMATION BELOW TVD
MCKEE	No			No	FORMATION BELOW TVD
STRAWN	No			No	FORMATION BELOW TVD
FUSSELMAN	No			No	FORMATION BELOW TVD
DEVONIAN	No			No	FORMATION BELOW TVD
SILURIAN	No			No	FORMATION BELOW TVD
ELLENBURGER	No			No	FORMATION BELOW TVD
Do the producing interval of this well produce H2S with a concentration in excess of 100 ppm				No	
Is the completion being downhole commingled			No		

REMARKS

THE NAME OF THIS WELL WAS CHANGED FROM UNIVERSITY 7-43 28H TO UNIVERSITY 7-43 43H ON WELL RECORD TRACKING #159108 DUE TO A LEASE CONSOLIDATION THAT WAS APPROVED BY THE RRC IN DECEMBER OF 2015.

RRC REMARKS	
PUBLIC COMMENTS: [RRC Staff 2016-08-24 15:30:29.032] EDL=10265 feet, max acres=680, SPRABERRY (TREND AREA) oil well	
CASING RECORD : PRODUCTION HOLE CROSSOVER FROM 8 3/4" TO 8 1/2" @ 8950'.	
TUBING RECORD:	
PRODUCING/INJECTION/DISPOSAL INTERVAL : EST % WASH-OUT OR HOLE ENLARGEMENT SHOWN ON W-15 REFLECTS EXCESS CEMENT PUMPED. SLURRY VOLUME AND HEIGHT ON W-15 INCLUDES THE EXCESS CEMENT PUMPED.	
ACID, FRACTURE, CEMENT SQUEEZE, CAST IRON BRIDGE PLUG, RETAINER, ETC. : WE REQUEST A SWR-13 WAIVER FOR THE YATES & QUEEN FORMATIONS AS THERE ARE NO PRODUCING WELLS IN THESE FORMATIONS WITHIN 1 MILE OF THIS WELL. SEE ATTACHED MAP.	
POTENTIAL TEST DATA: KOP ~ 8950'. LOG WAS MAILED TO RRC UNDER WELL RECORD TRACKING # 159108.	

OPERATOR'S CERTIFICATION			
Printed	CASI RENFRO	Title:	Regulatory Specialist III
Telephone	(972) 444-9001	Date	08/24/2016



RAILROAD COMMISSION OF TEXAS

1701 N. Congress

P.O. Box 12967

Austin, Texas 78701-2967

CEMENTING REPORT

Form W-15

Rev. 08/2014

Cementer: Fill in shaded areas.

Operator: Fill in other items.

OPERATOR INFORMATION

Operator Name: Pioneer Natural Res. USA, Inc

Operator P-5 No.: 665748

Cementer Name: Schlumberger

Cementer P-5 No.: 754900

WELL INFORMATION

District No.: 08

County: ANDREWS

Well No.: 43H

API No.: 4200347294

Drilling Permit No.: 812044

Lease Name: University 7-43

Lease No.: 40532

Field Name: SPRABERRY (TREND AREA)

Field No.: 85280300

I. CASING CEMENTING DATA

Type of casing: ☐ Conductor ☒ Surface ☐ Intermediate ☐ Liner ☐ Production

Drilled hole size (in.): 7 1/2" Depth of drilled hole (ft.): 1924' Est. % wash-out or hole enlargement:

Size of casing in O.D. (in.): 13 3/8" Casing weight (lbs/ft) and grade: 54.5 J55 No. of centralizers used: 12

Was cement circulated to ground surface (or bottom of cellar) outside

casing? ☒ Yes ☐ No If no for surface casing, explain in Remarks.

Setting depth shoe (ft.): 1922'

Top of liner (ft.):

Setting depth liner (ft.):

Hrs. waiting on cement before drill-out: 12

Calculated top of cement (ft.): 0

Cementing date: 9-Feb-16

SLURRY

Slurry No.	No. of Sacks	Class	Additives	Volume (cu.ft.)	Height (ft.)
1	1316	C	Remarks	2224.0	1524
2	377	C	Remarks	626.0	400
3					
Total	1693			2850.0	1924

II. CASING CEMENTING DATA

Type of casing: ☐ Surface ☐ Intermediate ☐ Production ☐ Tapered production ☐ Multi-stage cement shoe ☐ Multiple parallel strings

Drilled hole size (in.): Depth of drilled hole (ft.): Est. % wash-out or hole enlargement:

Size of casing in O.D. (in.): Casing weight (lbs/ft) and grade: No. of centralizers used:

Tapered string drilled hole size (in.)

Tapered string depth of drilled hole (ft.)

Upper: Lower:

Upper: Lower:

Tapered string size of casing in O.D. (in.)

Tapered string casing weight (lbs/ft) and grade

Tapered string no. of centralizers used

Upper: Lower:

Upper: Lower:

Upper: Lower:

Was cement circulated to ground surface (or bottom of cellar) outside casing?

☐ Yes ☐ No

Setting depth tool (ft.):

Hrs. waiting on cement before drill-out:

Calculated top of cement (ft.):

Cementing date:

SLURRY

Slurry No.	No. of Sacks	Class	Additives	Volume (cu.ft.)	Height (ft.)
1					
2					
3					
Total					

III. CASING CEMENTING DATA

Type of casing: ☐ Surface ☐ Intermediate ☐ Production ☐ Tapered production ☐ Multi-stage cement/DV tool ☐ Multiple parallel strings

Drilled hole size (in.): Depth of drilled hole (ft.): Est. % wash-out or hole enlargement:

Size of casing in O.D. (in.): Casing weight (lbs/ft) and grade: No. of centralizers used:

Tapered string drilled hole size (in.)

Tapered string depth of drilled hole (ft.)

Upper: Lower:

Upper: Lower:

Tapered string size of casing in O.D. (in.)

Tapered string casing weight (lbs/ft) and grade

Tapered string no. of centralizers used

Upper: Lower:

Upper: Lower:

Upper: Lower:

Was cement circulated to ground surface (or bottom of cellar) outside casing?

☐ Yes ☐ No

Setting depth tool (ft.):

Hrs. waiting on cement before drill-out:

Calculated top of cement (ft.):

Cementing date:

SLURRY

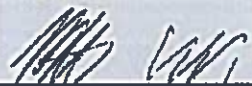
Slurry No.	No. of Sacks	Class	Additives	Volume (cu.ft.)	Height (ft.)
1					
2					
3					
Total					

Schlumberger-Private

CEMENTING TO SQUEEZE, PLUG BACK OR PLUG AND ABANDON							
	PLUG #1	PLUG #2	PLUG #3	PLUG #4	PLUG #5	PLUG #6	PLUG #7
Cementing Date							
Size of hole or pipe (in.)							
Depth to bottom of tubing or drill pipe (ft.)							
Cement retainer setting depth (ft.)							
CIBP setting depth (ft.)							
Amount of cement on top of CIBP (ft.)							
Sacks of cement used							
Slurry volume pumped (cu. ft.)							
Calculated top of plug (ft.)							
Measured top of plug, if tagged (ft.)							
Slurry weight (lbs/gal)							
Class/type of cement							
Perforate and squeeze (YES/NO)							

REMARKS
#1: 61lb/skD903+2%0079+0.13lb/skD130+2%5001+0.02gal/skD047+26lb/skD035
#2: 94lb/skD903+0.1%0065+2%0020+0.02gal/skD047
#3: 130 barrels to surface = 432 sacks
#4:

CEMENTER'S CERTIFICATE: I declare under penalties prescribed in Sec. 91.143, Texas Natural Resources Code, that I am authorized to make this certification, that the cementing of casing and/or the placing of cement plugs in this well as shown in the report was performed by me or under my supervision, and that the cementing data and facts presented on both sides of this form are true, correct, and complete, to the best of my knowledge. This certification covers cementing data only.

Patrick McCann, FE	Schlumberger	
Name and title of cementer's representative	Cementing Company	Signature
32 E. Industrial Loop	Midland TX 79701	(432) 683-1887
Address	City, State, Zip Code	Tel: Area Code Number
		February 9, 2016
		Date: mo. day yr.

OPERATOR'S CERTIFICATE: I declare under penalties prescribed in Sec. 91.143, Texas Natural Resources Code, that I am authorized to make this certification, that I have knowledge of the well data and information presented in this report, and that data and facts presented on both sides of this form are true, correct, and complete, to the best of my knowledge. This certification covers all well data.

Casi Renfro, Regulatory Specialist II	
5205 N. O'Connor Blvd., Suite 200	Title
Irving, TX 75039	Signature
972.969.5687	6/23/16
	Date: mo. day yr.

I-15, Cementing Report

NOTICE: The Form W-15 must be submitted as an attachment to a Form G-1 (Gas Well Back Pressure Test, Completion or Recompletion Report, and Log), Form W-2 (Oil Well Potential Test, Completion or Recompletion Report, and Log), Form W-3 (Plugging Record), or Form W-4 (Application for Multiple Completion), any time cement is pumped in a wellbore.

- What to file:** An operator should file an original and one copy of the completed Form W-15 for each cementing company used on a well. The cementing of different casing strings on a well by one cementing company may be reported on one form. The Form W-15 should be filed with the Form W-3, Plugging Record, unless the Form W-3 is signed by the cementing company representative. When reporting dry holes, operators must complete Form W-15, in addition to Form W-3, to show any casing cemented in the hole.
- How to file:** An oil and gas completion report and Form W-15 may be filed online using the Commission's Online System (<https://webapps.rrc.state.tx.us/security/login.do>) or a paper copy of the form may be mailed to the Commission in Austin (P.O. Box 12967, Austin, Texas 78711-2967).
- Surface casing:** An operator must set and cement sufficient surface casing to protect all usable-quality water strata, as defined by the Groundwater Advisory Unit in Austin. Sufficient cement shall be used to fill the annular space outside the casing from the shoe to the ground surface or to the bottom of the cellar. Before drilling a well, an operator must obtain a letter from the Groundwater Advisory Unit stating the protection depth. Surface casing should not be set deeper than 200 feet below the specified depth without prior approval from the Commission. To plug and abandon a well, operators must use only cements approved by the Commission's Director of Field Operations in accordance with SWR 14 ([http://info.sos.state.tx.us/pls/pub/readtac\\$ext.TacPage?sl=R&app=9&p_dir=&p_rloc=&p_tloc=&p_ploc=&pg=1&p_tac=&ti=16&pt=1&ch=3&ri=14](http://info.sos.state.tx.us/pls/pub/readtac$ext.TacPage?sl=R&app=9&p_dir=&p_rloc=&p_tloc=&p_ploc=&pg=1&p_tac=&ti=16&pt=1&ch=3&ri=14)). Cementing companies, service companies, or operators can qualify as approved cementers by demonstrating that they are able to mix and pump cement in compliance with Commission rules and regulations.
- Estimated % wash-out:** If the estimated % wash-out is less than 20% (or 30% along the Gulf Coast), provide supporting documentation such as a caliper log to show how the estimated % wash-out was obtained.
- Multi-stage cement:** An operator must report the multi-stage cement shoe in II. Casing Cementing Data section by selecting the type of casing and Multi-stage cement shoe. The operator must report the multi-stage cement tool in III. Casing Cementing Data section by selecting the type of casing and Multi-stage cement/DV tool.
- Multiple parallel strings:** An operator should file the Form W-15 as an attachment to the Form W-4, Application for Multiple Completion. An operator may be required to submit multiple Form W-15s to show all data for multiple parallel strings.
- Slurry data:** If cement job exceeds three slurries, continue the list of slurries in the Slurry table in the subsequent Casing Cementing Data box.

Schlumberger-Private



RAILROAD COMMISSION OF TEXAS

1701 N. Congress

P.O. Box 12967

Austin, Texas 78701-2967

CEMENTING REPORT

Form W-15

Rev. 08/2014

Cementer: Fill in shaded areas.

Operator: Fill in other items.

OPERATOR INFORMATION

Operator Name:	Pioneer Natural Resources USA, INC	Operator P-5 No.:	605748
Cementer Name:	Schlumberger	Cementer P-5 No.:	754900

WELL INFORMATION

District No.:	08	County:	ANDREWS
Well No.:	43H	API No.:	4200317294
Lease Name:	University 7-43	Lease No.:	40932
Field Name:	Spraberry (TRENCH AREA)	Field No.:	85280300

I. CASING CEMENTING DATA

Type of casing:	<input type="checkbox"/> Conductor	<input type="checkbox"/> Surface	<input checked="" type="checkbox"/> Intermediate	<input type="checkbox"/> Liner	<input type="checkbox"/> Production
Drilled hole size (in.):	12 1/4"	Depth of drilled hole (ft.):	6100'	Est. % wash-out or hole enlargement:	150%
Size of casing in O.D. (in.):	9 5/8"	Casing weight (lbs/ft) and grade:	40 L80	No. of centralizers used:	15
Was cement circulated to ground surface (or bottom of cellar) outside casing?	<input type="checkbox"/> Yes	<input checked="" type="checkbox"/> No	Setting depth shoe (ft.):		Top of liner (ft.):
			6040'		Setting depth liner (ft.):
Hrs. waiting on cement before drill-out:	12	Calculated top of cement (ft.):	5665'	Cementing date:	

SLURRY

Slurry No.	No. of Sacks	Class	Additives	Volume (cu.ft.)	Height (ft.)
1	671	TXI + Adds	Remarks	1469.5	1875
2	400	Class H + Adds	Remarks	428.0	500
3					
Total	1071			1897.5	2375

II. CASING CEMENTING DATA

Type of casing:	<input type="checkbox"/> Surface	<input type="checkbox"/> Intermediate	<input type="checkbox"/> Production	<input type="checkbox"/> Tapered production	<input type="checkbox"/> Multi-stage cement shoe	<input type="checkbox"/> Multiple parallel strings
Drilled hole size (in.):		Depth of drilled hole (ft.):		Est. % wash-out or hole enlargement:		
Size of casing in O.D. (in.):		Casing weight (lbs/ft) and grade:		No. of centralizers used:		
Tapered string drilled hole size (in.)		Tapered string depth of drilled hole (ft.)				
Upper:	Lower:	Upper:	Lower:			
Tapered string size of casing in O.D. (in.)		Tapered string casing weight (lbs/ft) and grade		Tapered string no. of centralizers used		
Upper:	Lower:	Upper:	Lower:	Upper:	Lower:	
Was cement circulated to ground surface (or bottom of cellar) outside casing?	<input type="checkbox"/> Yes	<input type="checkbox"/> No	Setting depth tool (ft.):			
Hrs. waiting on cement before drill-out:		Calculated top of cement (ft.):		Cementing date:		

SLURRY

Slurry No.	No. of Sacks	Class	Additives	Volume (cu.ft.)	Height (ft.)
1					
2					
3					
Total					

III. CASING CEMENTING DATA

Type of casing:	<input type="checkbox"/> Surface	<input type="checkbox"/> Intermediate	<input type="checkbox"/> Production	<input type="checkbox"/> Tapered production	<input type="checkbox"/> Multi-stage cement/DV tool	<input type="checkbox"/> Multiple parallel strings
Drilled hole size (in.):		Depth of drilled hole (ft.):		Est. % wash-out or hole enlargement:		
Size of casing in O.D. (in.):		Casing weight (lbs/ft) and grade:		No. of centralizers used:		
Tapered string drilled hole size (in.)		Tapered string depth of drilled hole (ft.)				
Upper:	Lower:	Upper:	Lower:			
Tapered string size of casing in O.D. (in.)		Tapered string casing weight (lbs/ft) and grade		Tapered string no. of centralizers used		
Upper:	Lower:	Upper:	Lower:	Upper:	Lower:	
Was cement circulated to ground surface (or bottom of cellar) outside casing?	<input type="checkbox"/> Yes	<input type="checkbox"/> No	Setting depth tool (ft.):			
Hrs. waiting on cement before drill-out:		Calculated top of cement (ft.):		Cementing date:		

SLURRY

Slurry No.	No. of Sacks	Class	Additives	Volume (cu.ft.)	Height (ft.)
1					
2					
3					
Total					

CEMENTING TO SQUEEZE, PLUG BACK OR PLUG AND ABANDON							
	PLUG #1	PLUG #2	PLUG #3	PLUG #4	PLUG #5	PLUG #6	PLUG #7
Cementing Date							
Size of hole or pipe (in.)							
Depth to bottom of tubing or drill pipe (ft.)							
Cement retainer setting depth (ft.)							
CIBP setting depth (ft.)							
Amount of cement on top of CIBP (ft.)							
Sacks of cement used							
Slurry volume pumped (cu. ft.)							
Calculated top of plug (ft.)							
Measured top of plug, if tagged (ft.)							
Slurry weight (lbs/gal)							
Class/type of cement							
Perforate and squeeze (YES/NO)							

REMARKS
#1: 75ppsD049 + 5ppsD042 + 0.02gpsD047 + 0.1%D208 + 0.5%D238 + 0.1%D013 + 2%D154 + 0.13ppsD130 + 3%D174
#2: 94pps D909 + 0.02gpsD047 + 0.1%D065 + 0.15%D800
#3:
#4:

CEMENTER'S CERTIFICATE: I declare under penalties prescribed in Sec. 91.143, Texas Natural Resources Code, that I am authorized to make this certification, that the cementing of casing and/or the placing of cement plugs in this well as shown in the report was performed by me or under my supervision, and that the cementing data and facts presented on both sides of this form are true, correct, and complete, to the best of my knowledge. This certification covers cementing data only.

Matthew Courtney, FE2
Name and title of cementer's representative

Schlumberger
Cementing Company


Signature

32 E. Industrial Loop Midland TX 79701
Address City, State, Zip Code

(432) 683-1887
Tel: Area Code Number

February 20, 2016
Date: mo. day yr.

OPERATOR'S CERTIFICATE: I declare under penalties prescribed in Sec. 91.143, Texas Natural Resources Code, that I am authorized to make this certification, that I have knowledge of the well data and information presented in this report, and that data and facts presented on both sides of this form are true, correct, and complete, to the best of my knowledge. This certification covers all well data.

Casi Renfro, Regulatory Specialist II
5205 N. O'Connor Blvd., Suite 200
Irving, TX 75039
972.969.5687


Title Signature
Tel: Area Code Number Date: mo. day yr.
7/14/16

-15, Cementing Report

NOTICE: The Form W-15 must be submitted as an attachment to a Form G-1 (Gas Well Back Pressure Test, Completion or Recompletion Report, and Log), Form W-2 (Oil Well Potential Test, Completion or Recompletion Report, and Log), Form W-3 (Plugging Record), or Form W-4 (Application for Multiple Completion), any time cement is pumped in a wellbore.

- What to file: An operator should file an original and one copy of the completed Form W-15 for each cementing company used on a well. The cementing of different casing strings on a well by one cementing company may be reported on one form. The Form W-15 should be filed with the Form W-3, Plugging Record, unless the Form W-3 is signed by the cementing company representative. When reporting dry holes, operators must complete Form W-15, in addition to Form W-3, to show any casing cemented in the hole.
- How to file: An oil and gas completion report and Form W-15 may be filed online using the Commission's Online System (<https://webapps.rrc.state.tx.us/security/login.do>) or a paper copy of the form may be mailed to the Commission in Austin (P.O. Box 12967, Austin, Texas 78711-2967).
- Surface casing: An operator must set and cement sufficient surface casing to protect all usable quality water strata, as defined by the Groundwater Advisory Unit in Austin. Sufficient cement shall be used to fill the annular space outside the casing from the shoe to the ground surface or to the bottom of the cellar. Before drilling a well, an operator must obtain a letter from the Groundwater Advisory Unit stating the protection depth. Surface casing should not be set deeper than 200 feet below the specified depth without prior approval from the Commission. To plug and abandon a well, operators must use only cements approved by the Commission's Director of Field Operations in accordance with SWR 14 ([http://info.sos.state.tx.us/pis/pub/readtac\\$ext.TacPage?sl=R&app=9&p_dir=&p_rloc=&p_tloc=&p_ploc=&pg=1&p_tac=&ti=16&pt=1&ch=3&rl=14](http://info.sos.state.tx.us/pis/pub/readtac$ext.TacPage?sl=R&app=9&p_dir=&p_rloc=&p_tloc=&p_ploc=&pg=1&p_tac=&ti=16&pt=1&ch=3&rl=14)). Cementing companies, service companies, or operators can qualify as approved cementers by demonstrating that they are able to mix and pump cement in compliance with Commission rules and regulations.
- Estimated % wash-out: If the estimated % wash-out is less than 20% (or 30% along the Gulf Coast), provide supporting documentation such as a caliper log to show how the estimated % wash-out was obtained.
- Multi-stage cement: An operator must report the multi-stage cement shoe in II. Casing Cementing Data section by selecting the type of casing and Multi-stage cement shoe. The operator must report the multi-stage cement tool in III. Casing Cementing Data section by selecting the type of casing and Multi-stage cement/OV tool.
- Multiple parallel strings: An operator should file the Form W-15 as an attachment to the Form W-4, Application for Multiple Completion. An operator may be required to submit multiple Form W-15s to show all data for multiple parallel strings.
- Slurry data: If cement job exceeds three slurries, continue the list of slurries in the Slurry table in the subsequent Casing Cementing Data box.



RAILROAD COMMISSION OF TEXAS

1701 N. Congress

P. O. Box 12967

Austin, Texas 78701-2967

CEMENTING REPORT

Form W-15

Rev. 05/2014

Cementor: Fill in shaded areas.

Operator: Fill in other items.

OPERATOR INFORMATION

Operator Name:	Pioneer Natural Resources USA, INC	Operator P-5 No.:	665748
Cementor Name:	Schlumberger	Cementor P-5 No.:	754900

WELL INFORMATION

District No.:	08	County:	ANDREWS
Well No.:	43H	API No.:	4200347294
Lease Name:	University 7-43	Drilling Permit No.:	812044
Field Name:	Spraberry (Trend Area)	Lease No.:	40532
		Field No.:	85280300

I. CASING CEMENTING DATA

Type of casing:	<input type="checkbox"/> Conductor <input type="checkbox"/> Surface <input type="checkbox"/> Intermediate <input type="checkbox"/> Liner <input checked="" type="checkbox"/> Production				
Drilled hole size (in.):	8 3/4" / 8 1/2"	Depth of drilled hole (ft.):	20165'	Est. % wash-out or hole enlargement:	
Size of casing in O.D. (in.):	5 1/2"	Casing weight (lbs/ft) and grade:	20 P110	No. of centralizers used:	43
Was cement circulated to ground surface (or bottom of cellar) outside casing?	<input type="checkbox"/> Yes <input checked="" type="checkbox"/> No	Setting depth shoe (ft.):	20133'	Top of liner (ft.):	
	If no for surface casing, explain in Remarks.	Setting depth liner (ft.):			
Hrs. waiting on cement before drill-out:	12	Calculated top of cement (ft.):	3270	Cementing date:	1-Apr-16

SLURRY

Slurry No.	No. of Sacks	Class	Additives	Volume (cu.ft.)	Height (ft.)
1	362	TXI	Remarks	927	3505
2	1680	TDI	Remarks	2705	11202
3					
Total	2042			3632	14707

II. CASING CEMENTING DATA

Type of casing:	<input type="checkbox"/> Surface <input type="checkbox"/> Intermediate <input type="checkbox"/> Production <input type="checkbox"/> Tapered production <input type="checkbox"/> Multi-stage cement shoe <input type="checkbox"/> Multiple parallel strings				
Drilled hole size (in.):		Depth of drilled hole (ft.):		Est. % wash-out or hole enlargement:	
Size of casing in O.D. (in.):		Casing weight (lbs/ft) and grade:		No. of centralizers used:	
Tapered string drilled hole size (in.)		Tapered string depth of drilled hole (ft.)			
Upper:	Lower:	Upper:	Lower:		
Tapered string size of casing in O.D. (in.)		Tapered string casing weight (lbs/ft) and grade		Tapered string no. of centralizers used	
Upper:	Lower:	Upper:	Lower:	Upper:	Lower:
Was cement circulated to ground surface (or bottom of cellar) outside casing?	<input type="checkbox"/> Yes <input type="checkbox"/> No	Setting depth tool (ft.):			
Hrs. waiting on cement before drill-out:		Calculated top of cement (ft.):		Cementing date:	

SLURRY

Slurry No.	No. of Sacks	Class	Additives	Volume (cu.ft.)	Height (ft.)
1					
2					
3					
Total					

III. CASING CEMENTING DATA

Type of casing:	<input type="checkbox"/> Surface <input type="checkbox"/> Intermediate <input type="checkbox"/> Production <input type="checkbox"/> Tapered production <input type="checkbox"/> Multi-stage cement/DV tool <input type="checkbox"/> Multiple parallel strings				
Drilled hole size (in.):		Depth of drilled hole (ft.):		Est. % wash-out or hole enlargement:	
Size of casing in O.D. (in.):		Casing weight (lbs/ft) and grade:		No. of centralizers used:	
Tapered string drilled hole size (in.)		Tapered string depth of drilled hole (ft.)			
Upper:	Lower:	Upper:	Lower:		
Tapered string size of casing in O.D. (in.)		Tapered string casing weight (lbs/ft) and grade		Tapered string no. of centralizers used	
Upper:	Lower:	Upper:	Lower:	Upper:	Lower:
Was cement circulated to ground surface (or bottom of cellar) outside casing?	<input type="checkbox"/> Yes <input type="checkbox"/> No	Setting depth tool (ft.):			
Hrs. waiting on cement before drill-out:		Calculated top of cement (ft.):		Cementing date:	

SLURRY

Slurry No.	No. of Sacks	Class	Additives	Volume (cu.ft.)	Height (ft.)
1					
2					
3					
Total					



RAILROAD COMMISSION OF TEXAS

OIL AND GAS DIVISION

OPERATOR Name: PIONEER NATURAL RES. USA, INC.

RE: Lease: UNIVERSITY 7-43

Address1: ATTN WELDON PIERSON

Address2: 5205 N O'CONNOR BLVD SUITE 200

City: IRVING

State: TX

Well No: 28H

Sec: 36 **Block:** 7

County: ANDREWS

Survey Name: UL

SWR13EX Application Number: 5336

Drilling Permit No: 812044

SWR 13 CASING EXCEPTION APPLICATION/ALTERNATIVE REQUEST APPROVED

The Proposed Casing and Cementing Program submitted for the **LEASE NAME:** UNIVERSITY 7-43 ;
WELL NUMBER: 28H has been approved by the Railroad Commission of Texas District Office.

- a. A copy of this approved letter must be kept on location during all phases of drilling and/or plugging operations. Once approved, changes CANNOT be made to the Proposed Casing Program on the original application without additional approval from the Railroad Commission of Texas District Office.
- b. Any substantive modifications to the cement program require prior approval from the Railroad Commission of Texas District Office, and may require re-submission of the SWR 13 (Statewide Rule 13) Alternate Surface Casing Application. Contact the Railroad Commission of Texas District Office for more information.
- c. The tail slurry must be sufficient to fill the Zone of Critical Cement as described in Statewide Rule 13(b)(1)(H)(i). In addition, all cement slurries must be mixed on location as described in Application for Alternate Surface Casing Program.
- d. The casing and cement program shall adhere to the following specifications:
Set 2000 feet of surface casing and circulate cement from the shoe to the ground surface.

IF CEMENT IS NOT CIRCULATED TO THE GROUND SURFACE AS REQUIRED BY THIS EXCEPTION, YOU MUST CONTACT THE RAILROAD COMMISSION OF TEXAS DISTRICT OFFICE IMMEDIATELY AND FOLLOW THE PROCEDURES SET OUT IN RULE 13(b)(1)(H)(iii) OR AS REQUIRED BY THE RAILROAD COMMISSION OF TEXAS DISTRICT OFFICE.

You must comply with all other provisions of SWR 13 (Statewide Rule 13) and a representative of the cementing company who performs the cementing job for the protection of usable quality water strata must sign the Form W-15 attesting to the information regarding cementing operations performed; including circulation of cement. (Note: If surface casing is set below the approved depth, this can result in denial of future Statewide Rule 13(b)(1)(H)(i) requests.) A condition of the approved drilling permit requires notification to the Railroad Commission of Texas District Office eight (8) hours prior to the time casing is to be set/cemented in the well. If your exception request was submitted after the subject well has been drilled and completed, the operator may be referred for enforcement action.

This authorization shall expire within five (5) years from the date the Groundwater Protection Determination was issued, or at the expiration of the drilling permit (if the well is not spudded prior to expiration) for the referenced well, whichever occurs first. Furthermore, this authorization supersedes any prior authorizations issued for the referenced well.

This exception is based on information provided when the application was submitted on 11/30/2015 .
If any information has changed, you must contact the appropriate Railroad Commission of Texas District Office, and submit a new application if applicable. If you have questions, please contact the appropriate Oil and Gas District office.

RRC APPROVAL BY: Erik Hanson

DATE: 12/03/2015

DISTRICT DIRECTOR

Tracking No.: 160475

This facsimile L-1 was generated electronically from data submitted to the RRC.

Instructions

When to File Form L-1:

- with Forms G-1, W-2, and GT-1 for new and deepened gas, oil, and geothermal wells
- with Form W-3 for plugged dry holes
- when sending in a log which was held under a request for confidentiality and the period for confidentiality has not yet expired.

When is Form L-1 NOT required:

- with Forms W-2, G-1, and GT-1 filed for injection wells, disposal wells, water supply wells, service wells, re-test wells, re-classifications, and plugbacks of oil, gas or geothermal wells
- with Form W-3 for plugging of other than a dry hole

Where to File Form L-1:

- with the appropriate Commission district office

Filling out Form L-1:

- Section I and the signature section must be filled out for all wells
- complete only the appropriate part of Section II

Type of log required:

- any wireline survey run for the purpose of obtaining lithology, porosity, or resistivity information
- no more than one such log is required but it must be of the subject well
- if such log is NOT run on the subject well, do NOT substitute any other type of log; just select Section II, Part A below

SECTION I. IDENTIFICATION

Operator
Name: PIONEER NATURAL RES. USA, INC.

District
No. 08

Completion
Date: 07/14/2016

Field
Name SPRABERRY (TREND AREA)

Drilling Permit
No. 812044

Lease
Name UNIVERSITY "7-43"

Lease/ID
No. 40532

Well
No. 43H

County
ANDREWS

API
No. 42- 003-47294

SECTION II. LOG STATUS (Complete either A or B)

☐ A. BASIC ELECTRIC LOG NOT RUN

☒ B. BASIC ELECTRIC LOG RUN. (Select one)

- ☐ 1. Confidentiality is requested and a copy of the header for each log that has been run on the well is attached.
- ☐ 2. Confidentiality already granted on basic electric log covering this interval (applicable to deepened wells only).
- ☐ 3. Basic electric log covering this interval already on file with Commission (applicable to deepened wells only).
- ☒ 4. Log attached to (select one):

☒ (a) Form L-1 (this form). If the company/lease name on log is different from that shown in Section I, please enter name on log here: _____

Check here if attached log is being submitted after being held confidential. ☐

☐ (b) Form P-7, Application for Discovery Allowable and New Field Designation.

☐ (c) Form W-4, Application for Multiple Completion:

Lease or ID No(s). _____

Well No(s). _____

CASI RENFRO

Signature

PIONEER NATURAL RES. USA, INC.

Name (print)

Regulatory Specialist III

Title

(972) 444-9001

Phone

08/24/2016

Date

-FOR RAILROAD COMMISSION USE ONLY-



Radial Cement Bond Variable Density Log with Gamma Ray/CCL

Company Well Field County State	Pioneer Natural Resources University 7-43 28H Sprayberry (Trend Area) Andrews TX	Company Pioneer Natural Resources					
		Well University 7-43 28H					
		Field Sprayberry (Trend Area)					
		County Andrews State TX					
Location:		API # : 42-003-47294-0000				Other Services	
		367 FNL/ 1993' FEL, SEC:36, BLK: 7, TWP:, SVY: University Lands				Junk Basket Gauge Ring 4.625"	
SEC TWP RGE						Elevation	
Permanent Datum		Ground Level		Elevation		2,960'	
Log Measured From		Kelly Bushing 29' APD				K.B. 2,988' D.F. 2,987' G.L. 2,960'	
Drilling Measured From		Kelly Bushing					
Date		April 27, 2016					
Run Number		One					
Depth Driller		20,165'					
Depth Logger		9,720'					
Bottom Logged Interval		9,715'					
Top Log Interval		Surface					
Open Hole Size		8.75"					
Type Fluid		Water					
Density / Viscosity		N/A					
Max. Recorded Temp.		163 Deg F					
Estimated Cement Top		3,270'					
Time Well Ready		ROA					
Time Logger on Bottom		18:20					
Equipment Number		120					
Location		Midland					
Recorded By		Aaron Norton					
Witnessed By		Felipe Diaz					
Borehole Record				Tubing Record			
Run Number	Bit	From	To	Size	Weight	From	To
Surface	17.5"	129'	1'924'				
Intermediate	12.25"	1,924'	6,100'				
Production	8.75"	6,100'	8,950'				
Production 2	8.50"	8,950'	20,165'				
Casing Record		Size		Wgt/Ft		Top	
Surface String		13.375"		54.5#		Surface	
Prot. String		9.625"		40#		Surface	
Production String		5.5"		20#		Surface	
Liner							
Short Joint						8,915'	

<<< Fold Here >>>

All interpretations are opinions based on inferences from electrical or other measurements and we cannot and do not guarantee the accuracy or correctness of any interpretation, and we shall not, except in the case of gross or willful negligence on our part, be liable or responsible for any loss, costs, damages, or expenses incurred or sustained by anyone resulting from any interpretation made by any of our officers, agents or employees. These interpretations are also subject to our general terms and conditions set out in our current Price Schedule.

Comments

Primary Log of Well
Logged with 1,500 PSI applied surface pressure
Log Correlated To Short Joint
as per Customer Request

Thank You For Choosing Nine Energy Service



Main Pass

1500 PSI Surface Pressure



RAILROAD COMMISSION OF TEXAS

1701 N. Congress
P.O. Box 12967
Austin, Texas 78701-2967

P-16 Data Sheet
(Optional)

Page 1
Rev. 09/2014

Acreage Designation

SECTION I. OPERATOR INFORMATION

Operator Name: PIONEER NATURAL RES. USA, INC. Operator P-5 No.: 685748
Operator Address: 5205 N. O'CONNOR BLVD., SUITE 200, IRVING, TEXAS 75039

SECTION II. WELL INFORMATION

District No.: 8	County: ANDREWS	Purpose of Filing: <input type="checkbox"/> Drilling Permit Application (Form W-1) <input checked="" type="checkbox"/> Completion Report (Form G-1/W-2)
Well No.: 43H	API No.: 42-003-47294	
Total Lease Acres: 6615.7	Drilling Permit No.: 812044	
Lease Name: UNIVERSITY 7-43	Lease No.: 40532	
Field Name: SPRABERRY (TREND AREA)	Field No.: 85280300	

Filer is the owner or lessee, or has been authorized by the owner or lessee, of all or an undivided portion of the mineral estate under each tract for which filer is listed as operator below. For all leases operated by other entities, the number of assigned acres shown are reflected on current Commission records or the filer has been authorized by the current operator to change the assigned acreage of that operator as shown below.

SECTION III. LISTING OF ALL WELLS IN THE APPLIED-FOR FIELD ON THE SAME ACREAGE AS THE LEASE, POOLED UNIT, OR UNITIZED TRACT DESIGNATED IN SECTION II ABOVE BY FILER

RRC ID No. or Lease No.	Well No.	H-Horizontal D-Directional V-Vertical	Lease Name	API No.	Acres Assigned	SWR 38 Except. (Y/N)	Operator Name and Operator No. (if different from filing operator)
40532	1	V	UNIVERSITY 7-43	42-003-41559	80		
40532	2	V	UNIVERSITY 7-43	42-003-43427	80		
40532	3	V	UNIVERSITY 7-43	42-003-43433	80		
40532	4	V	UNIVERSITY 7-43	42-003-43434	80		
40532	5	V	UNIVERSITY 7-43	42-003-43438	80		
40532	6	V	UNIVERSITY 7-43	42-003-44080	80		
40532	7	V	UNIVERSITY 7-43	42-003-44099	80		
40532	8	V	UNIVERSITY 7-43	42-003-41996	80		
40532	9	V	UNIVERSITY 7-43	42-003-40740	80		
40532	10	V	UNIVERSITY 7-43	42-003-41429	80		
40532	11	V	UNIVERSITY 7-43	42-003-42920	80		
40532	12	V	UNIVERSITY 7-43	42-003-43411	80		
40532	14	V	UNIVERSITY 7-43	42-003-41430	80		
40532	15	V	UNIVERSITY 7-43	42-003-41561	80		
40532	16	V	UNIVERSITY 7-43	42-003-41431	80		
40532	17	V	UNIVERSITY 7-43	42-003-43430	80		
40532	18	V	UNIVERSITY 7-43	42-003-40818	80		


Total Well Count >	17	< A. Total Assigned Horiz. Acreage	1360	< C. Total Assigned Acreage
		< Total Remaining Horiz. Acreage		< Total Remaining Acreage
		< B. Total Assigned Vert./Dir. Acreage		
		< Total Remaining Vert./Dir. Acreage		

SECTION IV. REMARKS / PURPOSE OF FILING (see instructions)

VERTICAL WELLS: 60
HORIZONTAL WELLS: 21
TOTAL WELLS: 81

Attach Additional Pages As Needed. ☐ No additional pages ☒ Additional Pages: 2 (No. of additional pages)

CERTIFICATION: I declare under penalties prescribed in Sec. 91.143, Texas Natural Resources Code, that this report was prepared by me or under my supervision or direction, that I am authorized to make this report, and that the information contained in this report is true, correct, and complete to the best of my knowledge.

Signature:  CASI RENFRO, REGULATORY SPECIALIST II CASI.RENFRO@PXD.COM

Name and title (type or print): Email (include email address only if you affirmatively consent to its public release)

5205 N. O'CONNOR BLVD., SUITE 200, IRVING, TX 75039 972-969-5687 08/24/2016

Address City, State, Zip Code Tel: Area Code Number Date: mo. day yr.



RAILROAD COMMISSION OF TEXAS

1701 N. Congress
P.O. Box 12967
Austin, Texas 78701-2967

P-16 Data Sheet
Attachment

Page 1A

Rev. 1/2016

Acreage Designation Attachment

Filer is the owner or lessee, or has been authorized by the owner or lessee, of all or an undivided portion of the mineral estate under each tract for which filer is listed as operator below. For all leases operated by other entities, the number of assigned acres shown are reflected on current Commission records or the filer has been authorized by the current operator to change the assigned acreage of that operator as shown below.

SECTION III (CONTINUED). LISTING OF ALL WELLS IN THE APPLIED-FOR FIELD ON THE SAME ACREAGE AS THE LEASE, POOLED UNIT, OR UNITIZED TRACT DESIGNATED IN SECTION II ABOVE BY FILER

RRC ID No. or Lease No.	Well No.	H -Horizontal D-Directional V-Vertical	Lease Name	API No.	Acres Assigned	SWR 38 Except. (Y/N)	Operator Name and Operator No. (if different from filing operator)
40532	19	V	UNIVERSITY 7-43	42-003-42466	80		
45032	20	V	UNIVERSITY 7-43	42-003-42467	80		
40532	21	V	UNIVERSITY 7-43	42-317-35825	80		
40532	22	V	UNIVERSITY 7-43	42-003-41558	80		
40532	23	V	UNIVERSITY 7-43	42-003-42762	80		
40532	24	V	UNIVERSITY 7-43	42-317-37279	80		
40532	25	V	UNIVERSITY 7-43	42-003-43697	80		
40532	26	V	UNIVERSITY 7-43	42-003-43699	80		
40532	27	V	UNIVERSITY 7-43	42-003-44045	80		
40532	28	V	UNIVERSITY 7-43	42-003-44046	80		
40532	29	V	UNIVERSITY 7-43	42-003-42891	80		
40532	30	V	UNIVERSITY 7-43	42-003-42916	80		
40532	31	V	UNIVERSITY 7-43	42-003-42917	80		
40532	32	V	UNIVERSITY 7-43	42-003-42918	80		
40532	33	V	UNIVERSITY 7-43	42-003-42919	80		
40532	34	V	UNIVERSITY 7-43	42-003-42430	80		
40532	35	V	UNIVERSITY 7-43	42-003-41428	80		
40532	36	V	UNIVERSITY 7-43	42-003-42431	80		
40532	37	V	UNIVERSITY 7-43	42-003-42432	80		
40532	38	V	UNIVERSITY 7-43	42-003-42420	80		
40532	39	V	UNIVERSITY 7-43	42-003-43426	80		
40532	40	V	UNIVERSITY 7-43	42-003-42158	80		
40532	41	V	UNIVERSITY 7-43	42-003-43297	80		
40532	42	V	UNIVERSITY 7-43	42-003-43301	80		
40532	43	V	UNIVERSITY 7-43	42-003-43302	80		
40532	44	V	UNIVERSITY 7-43	42-003-43303	80		
40532	45	V	UNIVERSITY 7-43	42-003-42921	80		
40532	46	V	UNIVERSITY 7-43	42-003-42922	80		
40532	47	V	UNIVERSITY 7-43	42-003-42923	80		
40532	48	V	UNIVERSITY 7-43	42-003-42924	80		
40532	49	V	UNIVERSITY 7-43	42-003-43298	80		
40532	50	V	UNIVERSITY 7-43	42-003-40820	80		
40532	51	V	UNIVERSITY 7-43	42-003-41584	80		
40532	52	V	UNIVERSITY 7-43	42-003-41585	80		
40532	53	V	UNIVERSITY 7-43	42-003-42763	80		
40532	54	V	UNIVERSITY 7-43	42-003-42154	80		
40532	55	V	UNIVERSITY 7-43	42-003-43450	80		
40532	57	V	UNIVERSITY 7-43	42-003-42064	80		
40532	58	V	UNIVERSITY 7-43	42-003-40877	80		

Total Well Count >

< A. Total Assigned Horiz. Acreage

< C. Total Assigned Acreage

< Total Remaining Horiz. Acreage

< Total Remaining Acreage

< B. Total Assigned Vert./Dir. Acreage

< Total Remaining Vert./Dir. Acreage



RAILROAD COMMISSION OF TEXAS

**1701 N. Congress
P.O.Box 12967
Austin, Texas 78701-2967**

Rev. 1/2016

Acreage Designation Attachment

Filer is the owner or lessee, or has been authorized by the owner or lessee, of all or an undivided portion of the mineral estate under each tract for which filer is listed as operator below. For all leases operated by other entities, the number of assigned acres shown are reflected on current Commission records or the filer has been authorized by the current operator to change the assigned acreage of that operator as shown below.

[illegible]

GROUNDWATER PROTECTION DETERMINATION

Form GW-2



Groundwater Advisory Unit

Date Issued: 18 November 2015**GAU Number:** 19028**Attention:** PIONEER NATURAL RES. USA,
ATTN WELDON PIERSON
IRVING, TX 75039**Operator No.:** 665748**API Number:**
County: ANDREWS
Lease Name: UNIVERSITY 7-43
Lease Number:
Well Number: 27H
Total Vertical Depth: 9500
Latitude: 32.351969
Longitude: -102.254447
Datum: NAD27**Purpose:** New Drill**Location:** Survey-UL; Block-7; Section-36

To protect usable-quality groundwater at this location, the Groundwater Advisory Unit of the Railroad Commission of Texas recommends:

The interval from the land surface to a depth of 300 feet, and the zone from 1350 to 1750 feet must be protected.

This recommendation is applicable to all wells within a radius of 200 feet of this location.

Note: Unless stated otherwise, this recommendation is intended to apply only to the subject well and not for area-wide use. This recommendation is for normal drilling, production, and plugging operations only. It does not apply to saltwater disposal operation into a nonproductive zone (RRC Form W-14).

This determination is based on information provided when the application was submitted on 11/18/2015. If the location information has changed, you must contact the Groundwater Advisory Unit, and submit a new application if necessary. If you have questions, please contact us at 512-463-2741 or gau@rrc.texas.gov.

Groundwater Advisory Unit, Oil and Gas Division

Form GW-2 P.O. Box 12967 Austin, Texas 78771-2967 512-463-2741 Internet address: www.rrc.texas.gov
Rev. 02/2014

Pioneer Natural Resources

University 7-43 42H-44H pad
















POSTED WELL DATA

Well Name
ProdEM

●

Well Number

WELL SYMBOLS

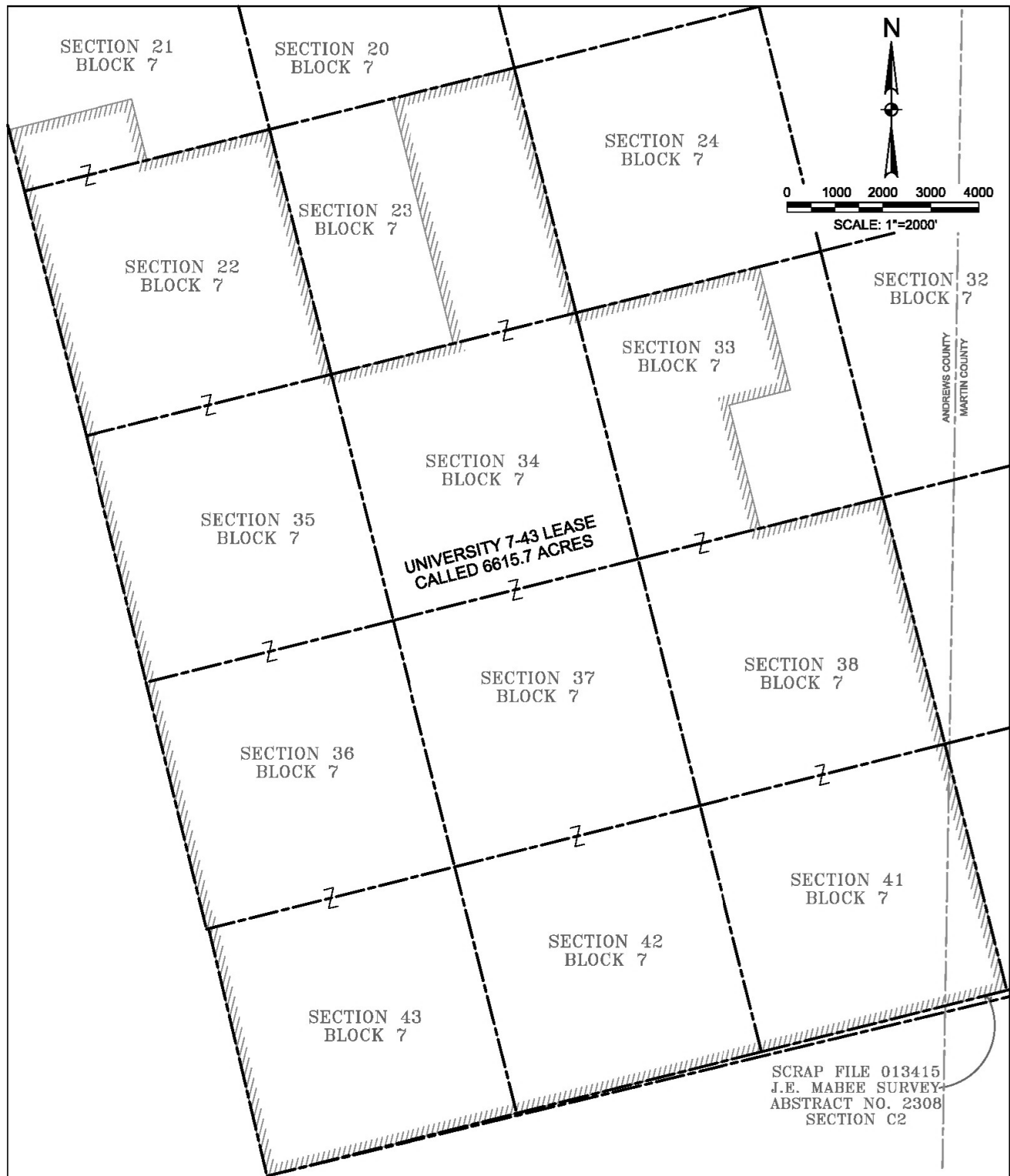
-  Abandoned Well
-  Abandoned Oil Well
-  Completion in Progress
-  Dry Hole, With Show of Gas
-  Dry Hole, With Show of Oil
-  Dry Hole
-  Proposed Injector
-  Location (Default)
-  Oil Well
-  Shut-in Oil and Gas
-  Facilities
-  Water Supply
-  Junked & Abandoned

REMARKS

Circle Represents 1 Mile

By: Casi Renfro

July 14, 2016



LEGEND

////	LEASE LINE
---	WELL LATERAL
---	SECTION LINE
7	LAND HOOK
---	COUNTY LINE
FIR	FOUND IRON ROD
C.M.	CONTROLLING MONUMENT
N.T.S.	NOT TO SCALE
CONC B/D	CONCRETE BRASS DISK
CONC BRKN/B/D	CONCRETE BROKEN BRASS DISK
STNMND	STONE MOUND
GIP	GALVANIZED IRON PIPE
FN	FND NAIL
FIP	FOUND IRON PIPE
FIR	FOUND IRON ROD

ALL OF SECTION 22, SECTION 34, SECTION 35, SECTION 36, SECTION 37, SECTION 38, SECTION 41, SECTION 42, SECTION 43, THE S/2 OF THE SW/4 OF SECTION 21, THE E/2 OF SECTION 23, THE W/2 OF SECTION 33 AND THE W/2 OF THE NE/4 OF SECTION 33 ALL IN BLOCK 7, UNIVERSITY LAND SURVEY, ANDREWS COUNTY, TEXAS AND MARTIN COUNTY, TEXAS

NOTE: WELL IS LOCATED ABOUT 15.4 MILES EAST OF ANDREWS, ANDREWS COUNTY, TEXAS.

PIONEER NATURAL RESOURCES
UNIVERSITY 7-43 LEASE



DATED: 10/5/2015
BY: JUAN GONZALEZ

TBPLS FIRM NO. 10193998
HALFF ASSOCIATES INC., ENGINEERS - SURVEYORS
4500 W. Millinole Ave. Ste 301 D ~ Midland, TEXAS ~ 79703
SCALE: 1"=2000' (432)-695-6110 AVO. 29678-W038

PIONEER
NATURAL RESOURCES

UNIVERSITY 7-43 #28H AS-DRILLED	NORTHING (NAD27)	EASTING (NAD27)	LATITUDE (NAD 27)	LONGITUDE (NAD 27)	SECTION LINE		LEASE LINE	
SURFACE HOLE (SHL)	981840.3	1406675.5	32.3520013	102.2543067	367' N	1948' E	10261' S	3375' W
POINT OF PENETRATION (POP) DEPTH: -6,814'	982520.4	1406405.7	32.3538574	102.2552181	358' N	2043' E	10231' N	3274' W
FIRST TAKE POINT (FTP) DEPTH: -9,729'	982074.3	1406528.1	32.3526374	102.2547971	104' S	2034' E	10524' S	3287' W
LAST TAKE POINT (LTP) DEPTH: -19,994'	972128.9	1409024.4	32.3254270	102.2461628	272' S	2037' E	272' S	3346' W
BOTTOM HOLE (BHL) DEPTH: -20,165'	971964.9	1409072.1	32.3249784	102.2459991	102' S	2031' E	102' S	3355' W

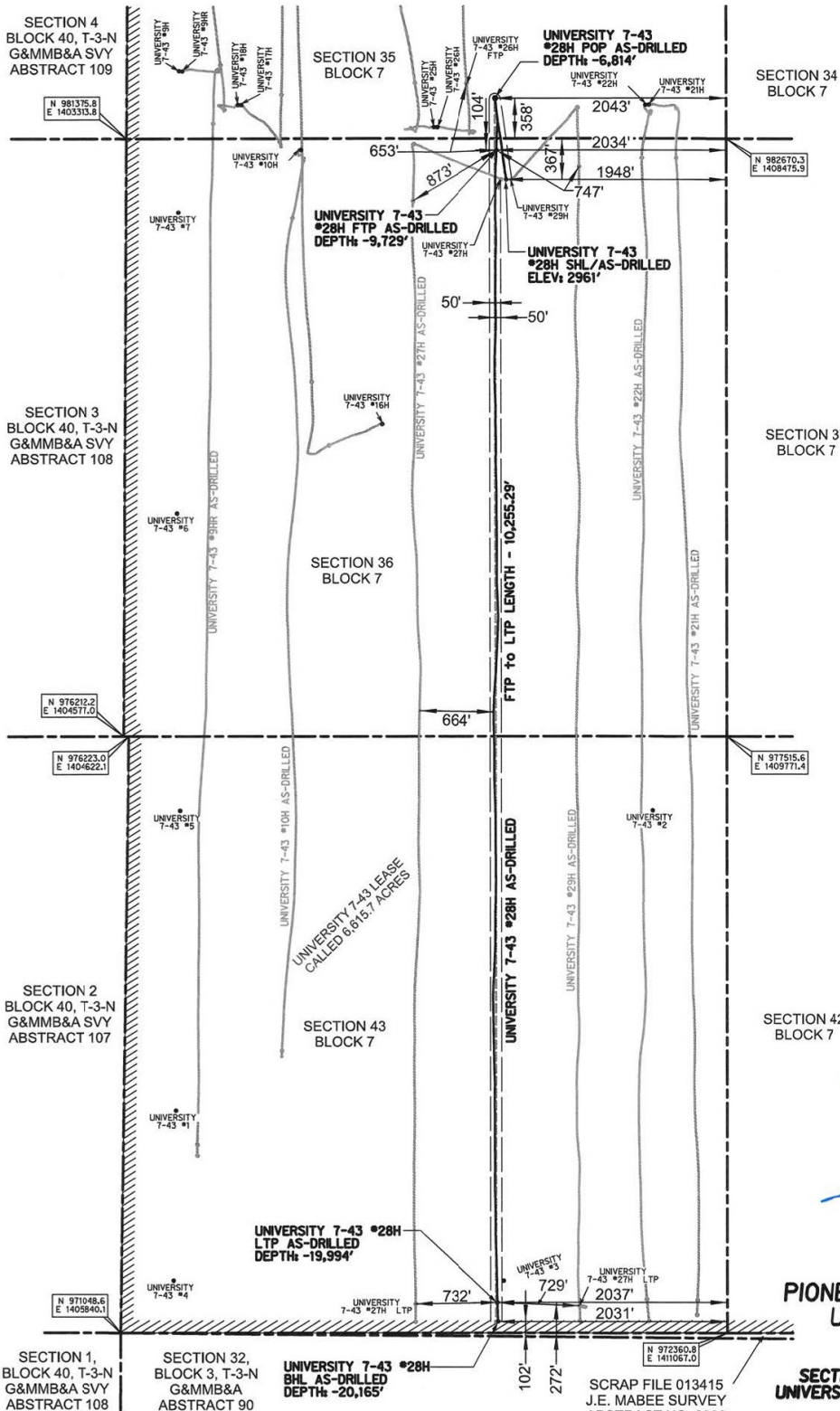


0 500 1000 1500 2000

SCALE: 1"=1000'

LEGEND

	LEASE LINE
	WELL LATERAL
	ADJACENT WELL LATERAL
	PROPOSED WELL BORE
	PERMITTED WELL BORE
	LABOR LINE
	LEASE LINE
	N.T.S.
	NOT TO SCALE



NOTES:

THE BASIS OF BEARING IS THE TEXAS COORDINATE SYSTEM OF 1927, CENTRAL ZONE (4203), AS DERIVED BY GPS MEASUREMENT BASED UPON THE CORRS.

ALL TEXAS STATE PLANE COORDINATES SHOWN HEREON ARE NAD 27 GRID COORDINATES AS COMPUTED BY CORPSCON VERSION 6.0.1. ALL GEOGRAPHIC COORDINATES SHOWN HEREON WERE CONVERTED USING CORPSCON VERSION 6.0.1. UNLESS OTHERWISE NOTED, ALL DISTANCES SHOWN HEREON ARE GRID DISTANCES AND THEY CAN BE CONVERTED TO SURFACE WHEN MULTIPLIED WITH A "SURFACE ADJUSTMENT FACTOR" OF 1.000232816 AS CALCULATED BY CORPSCON.

ELEVATIONS SHOWN HEREON ARE NAVD83 AS DERIVED BY GPS.

THIS EXHIBIT IS FOR TEXAS RAILROAD COMMISSION WELL PERMITTING PURPOSES ONLY. BOUNDARY LINES AND ACRES SHOWN HEREON REFLECT THE SURVEYORS PROFESSIONAL OPINION OF MINERAL RIGHTS AS DETERMINED FROM CLIENT-PROVIDED OIL AND GAS MINERAL LEASE DOCUMENTATION. THE INFORMATION DEPICTED HEREON SHALL NOT BE USED IN THE CONVEYANCE OF FEE TITLE TO REAL PROPERTY.

ALL MEASUREMENTS TO LEASE, UNIT, AND SURVEY LINES ARE PERPENDICULAR TO SAID LINES.

THIS SURVEY WAS PREPARED WITHOUT THE BENEFIT OF A TITLE REPORT.

THE AS-DRILLED DATA USED TO DEPICT THE WELL BORE PATH WAS PROVIDED BY OTHERS. NO WARRANTY IS EITHER EXPRESSED OR IMPLIED AS TO THE ACCURACY OF THE INFORMATION HEREIN.

SECTION 42
BLOCK 7



NOTE: WELL IS LOCATED ABOUT 17.2 MILES EAST OF ANDREWS, ANDREWS COUNTY, TEXAS.
**UNIVERSITY 7-43 LEASE
CALLED 6,615.7 ACRES**

**PIONEER NATURAL RESOURCES
UNIVERSITY 7-43 #28H
AS-DRILLED PLAT**

**LOCATED IN
SECTION 36 AND SECTION 43, BLOCK 7,
UNIVERSITY LAND SURVEY, ANDREWS COUNTY,
TEXAS**



DATED: 8/2/2016

BY: JOE McDONALD

TBPLS FIRM NO. 10193998

HALFF ASSOCIATES INC., ENGINEERS ~ SURVEYORS
3300 N A Street, Bldg 1, Ste 114 ~ Midland, TEXAS ~ 79705
SCALE: 1"=1000' (432)-253-3250 AVO. 29678-W0125

PIONEER
NATURAL RESOURCES