

XTO Energy

Andrews County, TX (NAD 27 TC)

Fullerton Clearfork Unit #7343

Fullerton Clearfork Unit #7343

OH

Design: OH

Regulatory Report (Grid North)

10 August, 2016

Regulatory Report (Grid North)

Company:	XTO Energy	Local Co-ordinate Reference:	Well Fullerton Clearfork Unit #7343
Project:	Andrews County, TX (NAD 27 TC)	TVD Reference:	KB = 13 @ 3298.00usft (Original Well Elev)
Site:	Fullerton Clearfork Unit #7343	MD Reference:	KB = 13 @ 3298.00usft (Original Well Elev)
Well:	Fullerton Clearfork Unit #7343	North Reference:	Grid
Wellbore:	OH	Survey Calculation Method:	Minimum Curvature
Design:	OH	Database:	Midland District

Project	Andrews County, TX (NAD 27 TC)		
Map System:	US State Plane 1927 (Exact solution)	System Datum:	Mean Sea Level
Geo Datum:	NAD 1927 (NADCON CONUS)		
Map Zone:	Texas Central 4203		

Site	Fullerton Clearfork Unit #7343		
Site Position:		Northing:	1,008,364.52 usft
From:	Map	Easting:	1,249,595.70 usft
Position Uncertainty:	0.00 usft	Slot Radius:	13-3/16"
		Latitude:	32° 24' 59.174 N
		Longitude:	102° 45' 52.585 W
		Grid Convergence:	-1.25 °

Well	Fullerton Clearfork Unit #7343					
Well Position	+N/-S	0.00 usft	Northing:	1,008,364.52 usft	Latitude:	32° 24' 59.174 N
	+E/-W	0.00 usft	Easting:	1,249,595.70 usft	Longitude:	102° 45' 52.585 W
Position Uncertainty		0.00 usft	Wellhead Elevation:	0.00 usft	Ground Level:	3,285.00 usft

Wellbore	OH				
Magnetics	Model Name	Sample Date	Declination (°)	Dip Angle (°)	Field Strength (nT)
	HDGM	8/10/2016	6.03	60.42	48,353

Design	OH				
Audit Notes:					
Version:	1.0	Phase:	ACTUAL	Tie On Depth:	0.00
Vertical Section:	Depth From (TVD) (usft)	+N/-S (usft)	+E/-W (usft)	Direction (bearing)	
	0.00	0.00	0.00	66.74	

Survey Program	Date	8/10/2016			
From (usft)	To (usft)	Survey (Wellbore)	Tool Name	Description	
100.00	7,332.00	SDI Keeper Gyro (OH)	Keeper	Keeper Standard Rate Gyro	

Survey								
MD (usft)	Inc (°)	Azi (grid_north_azim)	TVD (usft)	N/S (usft)	E/W (usft)	Closure Azimuth (bearing)	Closure Distance (usft)	
0.00	0.00	0.00	0.00	0.00	0.00	0.00	0.00	0.00
100.00	0.50	61.70	100.00	0.21	0.38	61.70	0.44	
125.00	0.79	69.20	125.00	0.32	0.64	63.50	0.72	
150.00	0.58	62.86	150.00	0.44	0.92	64.39	1.01	
175.00	0.61	65.28	174.99	0.55	1.15	64.33	1.27	
200.00	0.55	63.43	199.99	0.66	1.38	64.34	1.53	
225.00	0.59	65.95	224.99	0.77	1.60	64.40	1.78	
250.00	0.64	67.00	249.99	0.87	1.85	64.67	2.04	
275.00	0.69	66.65	274.99	0.99	2.11	64.94	2.33	
300.00	0.70	66.40	299.99	1.11	2.39	65.12	2.64	
325.00	0.71	66.77	324.98	1.23	2.67	65.27	2.94	
350.00	0.80	68.64	349.98	1.36	2.98	65.52	3.27	

Regulatory Report (Grid North)

Company:	XTO Energy	Local Co-ordinate Reference:	Well Fullerton Clearfork Unit #7343
Project:	Andrews County, TX (NAD 27 TC)	TVD Reference:	KB = 13 @ 3298.00usft (Original Well Elev)
Site:	Fullerton Clearfork Unit #7343	MD Reference:	KB = 13 @ 3298.00usft (Original Well Elev)
Well:	Fullerton Clearfork Unit #7343	North Reference:	Grid
Wellbore:	OH	Survey Calculation Method:	Minimum Curvature
Design:	OH	Database:	Midland District

Survey								
MD (usft)	Inc (°)	Azi (grid_north_azim)	TVD (usft)	N/S (usft)	E/W (usft)	Closure Azimuth (bearing)	Closure Distance (usft)	
375.00	0.91	70.63	374.98	1.49	3.33	65.95	3.65	
400.00	0.97	72.12	399.98	1.62	3.72	66.50	4.05	
425.00	1.16	75.64	424.97	1.74	4.16	67.27	4.52	
450.00	1.16	76.40	449.97	1.87	4.66	68.15	5.02	
475.00	1.29	77.38	474.96	1.99	5.18	68.99	5.54	
500.00	1.27	79.68	499.95	2.10	5.72	69.86	6.10	
525.00	1.49	82.99	524.95	2.19	6.32	70.90	6.69	
550.00	1.56	83.42	549.94	2.27	6.98	72.01	7.34	
575.00	1.60	85.25	574.93	2.33	7.67	73.06	8.01	
600.00	1.68	86.87	599.92	2.38	8.38	74.12	8.71	
625.00	1.74	87.65	624.91	2.42	9.12	75.15	9.44	
650.00	1.97	91.77	649.89	2.42	9.93	76.30	10.22	
675.00	2.01	91.69	674.88	2.40	10.80	77.50	11.06	
700.00	2.00	92.70	699.86	2.36	11.67	78.56	11.91	
725.00	2.05	93.31	724.85	2.32	12.56	79.55	12.77	
750.00	2.08	95.78	749.83	2.24	13.45	80.53	13.64	
775.00	2.05	97.03	774.82	2.14	14.35	81.50	14.51	
800.00	1.99	99.02	799.80	2.02	15.22	82.44	15.36	
825.00	2.08	98.59	824.79	1.88	16.10	83.32	16.21	
850.00	1.94	100.35	849.77	1.74	16.96	84.14	17.05	
875.00	1.99	99.04	874.75	1.60	17.81	84.88	17.88	
900.00	1.99	100.55	899.74	1.45	18.66	85.56	18.72	
925.00	1.88	102.94	924.73	1.28	19.49	86.25	19.53	
950.00	2.07	102.78	949.71	1.09	20.33	86.94	20.36	
975.00	2.04	104.08	974.69	0.88	21.20	87.63	21.22	
1,000.00	2.13	104.00	999.68	0.66	22.09	88.30	22.10	
1,025.00	2.19	103.50	1,024.66	0.43	23.00	88.92	23.00	
1,050.00	2.37	105.12	1,049.64	0.19	23.96	89.55	23.96	
1,075.00	2.39	105.65	1,074.62	-0.09	24.97	90.20	24.97	
1,100.00	2.53	107.97	1,099.60	-0.40	25.99	90.88	25.99	
1,125.00	2.61	107.39	1,124.57	-0.74	27.06	91.57	27.07	
1,150.00	2.64	108.62	1,149.54	-1.09	28.15	92.22	28.17	
1,175.00	2.85	110.21	1,174.52	-1.49	29.28	92.92	29.32	
1,200.00	2.85	111.20	1,199.48	-1.93	30.44	93.63	30.50	
1,225.00	2.92	111.75	1,224.45	-2.39	31.61	94.33	31.70	
1,250.00	2.84	112.30	1,249.42	-2.86	32.78	94.99	32.90	
1,275.00	2.72	113.39	1,274.39	-3.33	33.89	95.62	34.06	
1,300.00	2.69	113.89	1,299.36	-3.81	34.97	96.21	35.18	
1,325.00	2.64	115.19	1,324.34	-4.29	36.03	96.79	36.29	
1,350.00	2.61	115.34	1,349.31	-4.78	37.07	97.35	37.37	
1,375.00	2.61	115.11	1,374.29	-5.26	38.10	97.87	38.46	
1,400.00	2.48	116.87	1,399.26	-5.75	39.09	98.37	39.52	
1,425.00	2.49	117.52	1,424.24	-6.24	40.06	98.86	40.54	
1,450.00	2.45	120.58	1,449.21	-6.77	41.00	99.37	41.56	

Regulatory Report (Grid North)

Company:	XTO Energy	Local Co-ordinate Reference:	Well Fullerton Clearfork Unit #7343
Project:	Andrews County, TX (NAD 27 TC)	TVD Reference:	KB = 13 @ 3298.00usft (Original Well Elev)
Site:	Fullerton Clearfork Unit #7343	MD Reference:	KB = 13 @ 3298.00usft (Original Well Elev)
Well:	Fullerton Clearfork Unit #7343	North Reference:	Grid
Wellbore:	OH	Survey Calculation Method:	Minimum Curvature
Design:	OH	Database:	Midland District

Survey							
MD (usft)	Inc (°)	Azi (grid_north_azim)	TVD (usft)	N/S (usft)	E/W (usft)	Closure Azimuth (bearing)	Closure Distance (usft)
1,475.00	2.46	120.78	1,474.19	-7.31	41.92	99.90	42.55
1,500.00	2.47	121.26	1,499.17	-7.87	42.84	100.41	43.56
1,525.00	2.40	122.60	1,524.15	-8.43	43.74	100.91	44.55
1,550.00	2.41	123.81	1,549.12	-9.00	44.62	101.41	45.52
1,575.00	2.37	124.29	1,574.10	-9.59	45.49	101.90	46.49
1,600.00	2.40	123.30	1,599.08	-10.17	46.35	102.37	47.45
1,625.00	2.04	126.68	1,624.06	-10.72	47.14	102.81	48.35
1,650.00	1.98	128.60	1,649.05	-11.25	47.84	103.24	49.15
1,675.00	2.02	128.31	1,674.03	-11.80	48.52	103.67	49.94
1,700.00	1.96	136.19	1,699.02	-12.38	49.16	104.13	50.70
1,725.00	1.94	143.75	1,724.00	-13.03	49.71	104.69	51.39
1,750.00	1.97	143.56	1,748.99	-13.72	50.22	105.28	52.06
1,775.00	1.95	143.98	1,773.97	-14.41	50.72	105.86	52.73
1,800.00	1.88	144.86	1,798.96	-15.08	51.21	106.41	53.38
1,825.00	1.73	143.75	1,823.95	-15.72	51.67	106.93	54.01
1,850.00	1.71	144.10	1,848.93	-16.33	52.11	107.40	54.61
1,875.00	1.60	142.51	1,873.92	-16.91	52.54	107.84	55.19
1,900.00	1.46	139.60	1,898.91	-17.43	52.96	108.22	55.75
1,925.00	1.41	139.65	1,923.91	-17.91	53.36	108.55	56.29
1,950.00	1.42	138.97	1,948.90	-18.37	53.77	108.87	56.82
1,975.00	1.10	146.77	1,973.89	-18.81	54.10	109.17	57.28
2,000.00	1.01	152.10	1,998.89	-19.20	54.34	109.47	57.63
2,025.00	0.96	152.81	2,023.89	-19.59	54.53	109.76	57.94
2,050.00	0.92	145.62	2,048.88	-19.94	54.74	110.01	58.26
2,075.00	0.75	148.31	2,073.88	-20.24	54.94	110.22	58.55
2,100.00	0.52	124.56	2,098.88	-20.45	55.12	110.35	58.79
2,125.00	0.51	107.49	2,123.88	-20.54	55.32	110.37	59.01
2,150.00	0.48	109.47	2,148.88	-20.61	55.53	110.37	59.23
2,175.00	0.46	90.49	2,173.87	-20.65	55.73	110.33	59.43
2,200.00	0.49	84.20	2,198.87	-20.64	55.93	110.25	59.62
2,225.00	0.50	74.17	2,223.87	-20.60	56.14	110.15	59.80
2,250.00	0.53	56.14	2,248.87	-20.50	56.34	110.00	59.96
2,275.00	0.59	56.39	2,273.87	-20.37	56.55	109.81	60.10
2,300.00	1.00	55.12	2,298.87	-20.17	56.83	109.54	60.31
2,325.00	1.41	51.37	2,323.86	-19.85	57.25	109.13	60.60
2,350.00	1.58	50.62	2,348.85	-19.44	57.76	108.60	60.94
2,375.00	1.79	51.55	2,373.84	-18.98	58.33	108.03	61.34
2,400.00	2.08	54.08	2,398.83	-18.47	59.01	107.38	61.83
2,425.00	2.36	54.53	2,423.81	-17.91	59.79	106.67	62.42
2,450.00	2.49	55.35	2,448.79	-17.30	60.66	105.92	63.08
2,475.00	2.70	58.37	2,473.76	-16.68	61.61	105.15	63.83
2,500.00	2.80	58.51	2,498.73	-16.06	62.63	104.38	64.65
2,525.00	2.77	58.80	2,523.70	-15.42	63.67	103.62	65.51
2,550.00	2.88	58.34	2,548.67	-14.78	64.72	102.87	66.38

Regulatory Report (Grid North)

Company:	XTO Energy	Local Co-ordinate Reference:	Well Fullerton Clearfork Unit #7343
Project:	Andrews County, TX (NAD 27 TC)	TVD Reference:	KB = 13 @ 3298.00usft (Original Well Elev)
Site:	Fullerton Clearfork Unit #7343	MD Reference:	KB = 13 @ 3298.00usft (Original Well Elev)
Well:	Fullerton Clearfork Unit #7343	North Reference:	Grid
Wellbore:	OH	Survey Calculation Method:	Minimum Curvature
Design:	OH	Database:	Midland District

Survey								
MD (usft)	Inc (°)	Azi (grid_north_azim)	TVD (usft)	N/S (usft)	E/W (usft)	Closure Azimuth (bearing)	Closure Distance (usft)	
2,575.00	3.23	58.06	2,573.64	-14.08	65.85	102.07	67.34	
2,600.00	3.41	57.71	2,598.60	-13.31	67.08	101.22	68.38	
2,625.00	3.58	57.38	2,623.55	-12.49	68.36	100.36	69.49	
2,650.00	3.89	59.65	2,648.50	-11.64	69.75	99.48	70.72	
2,675.00	3.97	60.20	2,673.44	-10.78	71.23	98.61	72.04	
2,700.00	3.99	59.85	2,698.38	-9.92	72.74	97.76	73.41	
2,725.00	4.02	59.92	2,723.32	-9.04	74.25	96.94	74.80	
2,750.00	4.05	60.08	2,748.25	-8.16	75.77	96.15	76.21	
2,775.00	3.96	60.09	2,773.19	-7.29	77.28	95.39	77.63	
2,800.00	3.91	60.80	2,798.13	-6.44	78.78	94.68	79.04	
2,825.00	3.84	60.48	2,823.08	-5.62	80.25	94.00	80.44	
2,850.00	3.69	61.03	2,848.02	-4.81	81.68	93.37	81.82	
2,875.00	3.49	61.10	2,872.97	-4.06	83.05	92.80	83.15	
2,900.00	3.32	62.27	2,897.93	-3.35	84.36	92.28	84.42	
2,925.00	3.30	62.68	2,922.89	-2.68	85.64	91.80	85.68	
2,950.00	3.19	62.84	2,947.85	-2.04	86.90	91.34	86.92	
2,975.00	3.13	62.68	2,972.81	-1.41	88.12	90.91	88.13	
3,000.00	3.00	62.08	2,997.77	-0.79	89.31	90.50	89.31	
3,025.00	2.74	61.20	3,022.74	-0.19	90.41	90.12	90.41	
3,050.00	2.58	60.55	3,047.72	0.37	91.42	89.77	91.42	
3,075.00	2.47	60.21	3,072.69	0.92	92.38	89.43	92.38	
3,100.00	2.38	60.14	3,097.67	1.44	93.30	89.11	93.31	
3,125.00	2.34	59.13	3,122.65	1.96	94.18	88.81	94.20	
3,150.00	2.28	58.82	3,147.63	2.48	95.05	88.50	95.08	
3,175.00	2.21	57.98	3,172.61	3.00	95.88	88.21	95.93	
3,200.00	2.20	56.96	3,197.59	3.51	96.69	87.92	96.76	
3,225.00	2.19	56.94	3,222.57	4.03	97.50	87.63	97.58	
3,250.00	2.20	55.45	3,247.55	4.57	98.29	87.34	98.40	
3,275.00	2.13	55.29	3,272.54	5.10	99.07	87.05	99.20	
3,300.00	2.04	50.90	3,297.52	5.65	99.80	86.76	99.96	
3,325.00	2.05	48.76	3,322.50	6.22	100.48	86.45	100.67	
3,350.00	1.99	49.01	3,347.49	6.80	101.14	86.15	101.37	
3,375.00	2.03	48.98	3,372.47	7.38	101.80	85.85	102.07	
3,400.00	2.01	48.99	3,397.46	7.96	102.47	85.56	102.78	
3,425.00	1.94	49.43	3,422.44	8.52	103.12	85.28	103.47	
3,450.00	1.82	49.22	3,447.43	9.06	103.74	85.01	104.14	
3,475.00	1.72	49.85	3,472.42	9.56	104.33	84.77	104.77	
3,500.00	1.65	51.36	3,497.41	10.02	104.90	84.54	105.37	
3,525.00	1.60	48.42	3,522.40	10.48	105.44	84.32	105.96	
3,550.00	1.71	50.41	3,547.39	10.95	105.99	84.10	106.55	
3,575.00	1.92	53.66	3,572.37	11.43	106.61	83.88	107.22	
3,600.00	1.95	54.10	3,597.36	11.93	107.29	83.65	107.96	
3,625.00	1.97	53.25	3,622.34	12.44	107.98	83.43	108.70	
3,650.00	2.01	55.11	3,647.33	12.95	108.69	83.21	109.46	
3,675.00	1.95	54.13	3,672.31	13.45	109.39	82.99	110.21	

Regulatory Report (Grid North)

Company:	XTO Energy	Local Co-ordinate Reference:	Well Fullerton Clearfork Unit #7343
Project:	Andrews County, TX (NAD 27 TC)	TVD Reference:	KB = 13 @ 3298.00usft (Original Well Elev)
Site:	Fullerton Clearfork Unit #7343	MD Reference:	KB = 13 @ 3298.00usft (Original Well Elev)
Well:	Fullerton Clearfork Unit #7343	North Reference:	Grid
Wellbore:	OH	Survey Calculation Method:	Minimum Curvature
Design:	OH	Database:	Midland District

Survey							
MD (usft)	Inc (°)	Azi (grid_north_azim)	TVD (usft)	N/S (usft)	E/W (usft)	Closure Azimuth (bearing)	Closure Distance (usft)
3,700.00	1.94	52.90	3,697.30	13.95	110.07	82.78	110.95
3,725.00	1.90	50.79	3,722.29	14.47	110.73	82.56	111.67
3,750.00	1.81	48.36	3,747.27	14.99	111.35	82.33	112.35
3,775.00	1.81	48.56	3,772.26	15.52	111.94	82.11	113.01
3,800.00	1.73	48.06	3,797.25	16.03	112.52	81.89	113.65
3,825.00	1.49	45.21	3,822.24	16.51	113.03	81.69	114.23
3,850.00	1.36	39.44	3,847.23	16.97	113.45	81.49	114.71
3,875.00	1.32	39.82	3,872.22	17.42	113.82	81.30	115.14
3,900.00	1.21	39.53	3,897.22	17.84	114.17	81.12	115.56
3,925.00	1.18	37.71	3,922.21	18.25	114.50	80.94	115.94
3,950.00	1.13	35.65	3,947.21	18.66	114.80	80.77	116.30
3,975.00	1.14	35.46	3,972.20	19.06	115.09	80.60	116.65
4,000.00	1.05	30.87	3,997.20	19.46	115.35	80.43	116.98
4,025.00	1.03	29.77	4,022.19	19.85	115.58	80.26	117.27
4,050.00	1.00	27.84	4,047.19	20.24	115.79	80.09	117.55
4,075.00	1.02	19.67	4,072.19	20.64	115.97	79.91	117.79
4,100.00	0.98	6.69	4,097.18	21.06	116.07	79.72	117.96
4,125.00	0.94	3.81	4,122.18	21.48	116.11	79.52	118.08
4,150.00	0.88	359.41	4,147.18	21.88	116.12	79.33	118.16
4,175.00	0.85	353.66	4,172.17	22.25	116.10	79.15	118.21
4,200.00	0.88	350.93	4,197.17	22.63	116.04	78.97	118.23
4,225.00	0.85	348.53	4,222.17	23.00	115.98	78.78	118.24
4,250.00	0.80	347.77	4,247.16	23.35	115.90	78.61	118.23
4,275.00	0.83	345.85	4,272.16	23.70	115.82	78.44	118.22
4,300.00	0.89	344.11	4,297.16	24.06	115.72	78.26	118.20
4,325.00	0.82	345.22	4,322.16	24.42	115.63	78.08	118.18
4,350.00	0.74	334.37	4,347.15	24.74	115.51	77.91	118.13
4,375.00	0.72	334.83	4,372.15	25.02	115.37	77.76	118.06
4,400.00	0.70	330.18	4,397.15	25.30	115.23	77.62	117.98
4,425.00	0.74	327.14	4,422.15	25.57	115.07	77.47	117.87
4,450.00	0.72	321.96	4,447.15	25.83	114.88	77.33	117.75
4,475.00	0.76	318.56	4,472.14	26.07	114.68	77.19	117.60
4,500.00	0.70	324.22	4,497.14	26.32	114.48	77.05	117.46
4,525.00	0.85	319.01	4,522.14	26.59	114.27	76.90	117.32
4,550.00	0.94	324.95	4,547.14	26.89	114.03	76.73	117.16
4,575.00	0.90	310.59	4,572.13	27.19	113.76	76.56	116.96
4,600.00	0.84	311.71	4,597.13	27.44	113.47	76.41	116.74
4,625.00	0.95	314.90	4,622.13	27.71	113.19	76.25	116.53
4,650.00	0.90	330.22	4,647.12	28.02	112.95	76.07	116.37
4,675.00	0.96	358.47	4,672.12	28.40	112.84	75.87	116.36
4,700.00	0.72	359.25	4,697.12	28.77	112.84	75.70	116.45
4,725.00	0.46	6.23	4,722.12	29.03	112.84	75.57	116.52
4,750.00	0.23	290.85	4,747.12	29.14	112.81	75.51	116.51
4,775.00	0.23	272.39	4,772.12	29.16	112.71	75.49	116.42

Regulatory Report (Grid North)

Company:	XTO Energy	Local Co-ordinate Reference:	Well Fullerton Clearfork Unit #7343
Project:	Andrews County, TX (NAD 27 TC)	TVD Reference:	KB = 13 @ 3298.00usft (Original Well Elev)
Site:	Fullerton Clearfork Unit #7343	MD Reference:	KB = 13 @ 3298.00usft (Original Well Elev)
Well:	Fullerton Clearfork Unit #7343	North Reference:	Grid
Wellbore:	OH	Survey Calculation Method:	Minimum Curvature
Design:	OH	Database:	Midland District

Survey								
MD (usft)	Inc (°)	Azi (grid_north_azim)	TVD (usft)	N/S (usft)	E/W (usft)	Closure Azimuth (bearing)	Closure Distance (usft)	
4,800.00	0.45	247.80	4,797.12	29.13	112.57	75.49	116.28	
4,825.00	0.57	248.05	4,822.11	29.05	112.36	75.51	116.06	
4,850.00	0.70	243.57	4,847.11	28.93	112.11	75.53	115.79	
4,875.00	0.87	251.05	4,872.11	28.80	111.80	75.55	115.45	
4,900.00	0.88	243.49	4,897.11	28.65	111.44	75.58	115.07	
4,925.00	1.01	248.04	4,922.10	28.49	111.07	75.62	114.66	
4,950.00	1.09	258.39	4,947.10	28.36	110.63	75.62	114.21	
4,975.00	1.14	266.79	4,972.10	28.29	110.15	75.59	113.73	
5,000.00	1.04	264.49	4,997.09	28.26	109.68	75.55	113.26	
5,025.00	1.12	271.84	5,022.09	28.24	109.21	75.50	112.80	
5,050.00	1.21	280.87	5,047.08	28.30	108.70	75.41	112.33	
5,075.00	1.26	282.20	5,072.08	28.41	108.17	75.28	111.84	
5,100.00	1.23	280.84	5,097.07	28.52	107.64	75.16	111.36	
5,125.00	1.14	281.10	5,122.06	28.62	107.14	75.04	110.89	
5,150.00	1.19	277.18	5,147.06	28.70	106.63	74.94	110.43	
5,175.00	1.22	276.36	5,172.05	28.76	106.11	74.84	109.94	
5,200.00	1.22	271.81	5,197.05	28.80	105.58	74.74	109.44	
5,225.00	1.22	270.22	5,222.04	28.81	105.05	74.67	108.93	
5,250.00	1.25	270.87	5,247.04	28.81	104.51	74.59	108.41	
5,275.00	1.15	265.96	5,272.03	28.80	103.99	74.52	107.90	
5,300.00	1.16	269.63	5,297.03	28.78	103.48	74.46	107.41	
5,325.00	1.27	265.65	5,322.02	28.76	102.95	74.39	106.89	
5,350.00	1.37	267.30	5,347.01	28.72	102.38	74.33	106.33	
5,375.00	1.55	265.71	5,372.01	28.68	101.74	74.26	105.71	
5,400.00	1.51	265.69	5,397.00	28.63	101.08	74.18	105.06	
5,425.00	1.39	264.04	5,421.99	28.58	100.45	74.12	104.43	
5,450.00	1.35	259.71	5,446.98	28.49	99.86	74.08	103.84	
5,475.00	1.36	256.95	5,471.97	28.37	99.28	74.05	103.25	
5,500.00	1.44	258.12	5,496.97	28.24	98.68	74.03	102.64	
5,525.00	1.49	258.72	5,521.96	28.11	98.06	74.00	102.01	
5,550.00	1.35	261.76	5,546.95	28.01	97.45	73.97	101.39	
5,575.00	1.20	261.94	5,571.95	27.93	96.89	73.92	100.84	
5,600.00	1.35	259.59	5,596.94	27.84	96.35	73.88	100.29	
5,625.00	1.34	264.14	5,621.93	27.75	95.77	73.84	99.71	
5,650.00	1.21	268.10	5,646.93	27.72	95.21	73.77	99.16	
5,675.00	1.08	267.19	5,671.92	27.70	94.71	73.70	98.68	
5,700.00	1.01	266.00	5,696.92	27.67	94.26	73.64	98.23	
5,725.00	0.99	267.01	5,721.91	27.64	93.82	73.58	97.81	
5,750.00	0.90	270.63	5,746.91	27.63	93.41	73.52	97.41	
5,775.00	0.93	274.88	5,771.91	27.65	93.01	73.44	97.03	
5,800.00	0.99	271.35	5,796.90	27.67	92.59	73.36	96.64	
5,825.00	0.89	272.89	5,821.90	27.69	92.18	73.28	96.25	
5,850.00	0.83	270.70	5,846.90	27.70	91.81	73.21	95.90	
5,875.00	0.84	270.69	5,871.89	27.71	91.44	73.14	95.55	

Regulatory Report (Grid North)

Company:	XTO Energy	Local Co-ordinate Reference:	Well Fullerton Clearfork Unit #7343
Project:	Andrews County, TX (NAD 27 TC)	TVD Reference:	KB = 13 @ 3298.00usft (Original Well Elev)
Site:	Fullerton Clearfork Unit #7343	MD Reference:	KB = 13 @ 3298.00usft (Original Well Elev)
Well:	Fullerton Clearfork Unit #7343	North Reference:	Grid
Wellbore:	OH	Survey Calculation Method:	Minimum Curvature
Design:	OH	Database:	Midland District

Survey								
MD (usft)	Inc (°)	Azi (grid_north_azim)	TVD (usft)	N/S (usft)	E/W (usft)	Closure Azimuth (bearing)	Closure Distance (usft)	
5,900.00	0.75	260.41	5,896.89	27.68	91.10	73.10	95.21	
5,925.00	0.84	263.50	5,921.89	27.63	90.76	73.07	94.87	
5,950.00	0.84	264.27	5,946.89	27.59	90.39	73.02	94.51	
5,975.00	0.89	257.78	5,971.88	27.53	90.02	72.99	94.14	
6,000.00	0.96	253.31	5,996.88	27.43	89.63	72.98	93.73	
6,025.00	0.87	253.11	6,021.88	27.32	89.25	72.98	93.33	
6,050.00	0.94	256.43	6,046.87	27.21	88.87	72.97	92.94	
6,075.00	0.77	249.83	6,071.87	27.11	88.51	72.97	92.57	
6,100.00	0.85	246.75	6,096.87	26.98	88.18	72.99	92.21	
6,125.00	0.88	244.56	6,121.87	26.82	87.84	73.02	91.84	
6,150.00	0.80	253.16	6,146.86	26.69	87.50	73.04	91.48	
6,175.00	0.83	263.12	6,171.86	26.62	87.15	73.02	91.12	
6,200.00	0.79	253.52	6,196.86	26.55	86.80	73.00	90.77	
6,225.00	0.81	257.66	6,221.86	26.46	86.47	72.99	90.42	
6,250.00	0.72	261.45	6,246.85	26.40	86.14	72.96	90.09	
6,275.00	0.60	256.92	6,271.85	26.34	85.86	72.94	89.81	
6,300.00	0.62	262.87	6,296.85	26.30	85.59	72.92	89.54	
6,325.00	0.65	264.71	6,321.85	26.27	85.32	72.89	89.27	
6,350.00	0.64	267.29	6,346.85	26.25	85.04	72.85	89.00	
6,375.00	0.63	270.35	6,371.85	26.24	84.76	72.80	88.73	
6,400.00	0.50	264.47	6,396.84	26.23	84.51	72.76	88.49	
6,425.00	0.63	274.60	6,421.84	26.23	84.27	72.71	88.26	
6,450.00	0.59	282.24	6,446.84	26.27	84.01	72.63	88.02	
6,475.00	0.60	287.69	6,471.84	26.34	83.76	72.54	87.80	
6,500.00	0.67	285.50	6,496.84	26.42	83.49	72.44	87.57	
6,525.00	0.72	281.08	6,521.84	26.49	83.20	72.34	87.31	
6,550.00	0.78	277.90	6,546.84	26.54	82.87	72.24	87.02	
6,575.00	0.73	278.55	6,571.83	26.59	82.55	72.15	86.72	
6,600.00	0.68	281.65	6,596.83	26.64	82.24	72.05	86.45	
6,625.00	0.75	285.60	6,621.83	26.72	81.94	71.94	86.19	
6,650.00	0.71	281.59	6,646.83	26.79	81.63	71.83	85.92	
6,675.00	0.74	283.13	6,671.83	26.86	81.32	71.72	85.64	
6,700.00	0.77	286.22	6,696.82	26.94	81.00	71.60	85.37	
6,725.00	0.73	284.31	6,721.82	27.03	80.69	71.48	85.10	
6,750.00	0.66	281.03	6,746.82	27.10	80.39	71.37	84.84	
6,775.00	0.67	283.84	6,771.82	27.16	80.11	71.27	84.59	
6,800.00	0.61	280.80	6,796.82	27.22	79.84	71.17	84.35	
6,825.00	0.68	282.08	6,821.81	27.27	79.56	71.08	84.11	
6,850.00	0.70	282.87	6,846.81	27.34	79.27	70.97	83.85	
6,875.00	0.68	289.47	6,871.81	27.42	78.98	70.85	83.60	
6,900.00	0.65	288.38	6,896.81	27.52	78.70	70.73	83.38	
6,925.00	0.62	290.76	6,921.81	27.61	78.44	70.61	83.16	
6,950.00	0.79	293.86	6,946.81	27.73	78.16	70.47	82.93	
6,975.00	0.76	300.42	6,971.80	27.88	77.86	70.30	82.70	

Regulatory Report (Grid North)

Company:	XTO Energy	Local Co-ordinate Reference:	Well Fullerton Clearfork Unit #7343
Project:	Andrews County, TX (NAD 27 TC)	TVD Reference:	KB = 13 @ 3298.00usft (Original Well Elev)
Site:	Fullerton Clearfork Unit #7343	MD Reference:	KB = 13 @ 3298.00usft (Original Well Elev)
Well:	Fullerton Clearfork Unit #7343	North Reference:	Grid
Wellbore:	OH	Survey Calculation Method:	Minimum Curvature
Design:	OH	Database:	Midland District

Survey								
MD (usft)	Inc (°)	Azi (grid_north_azim)	TVD (usft)	N/S (usft)	E/W (usft)	Closure Azimuth (bearing)	Closure Distance (usft)	
7,000.00	0.84	301.19	6,996.80	28.06	77.56	70.11	82.48	
7,025.00	0.79	303.77	7,021.80	28.25	77.26	69.91	82.26	
7,050.00	0.87	295.36	7,046.80	28.43	76.94	69.72	82.03	
7,075.00	0.90	291.17	7,071.79	28.58	76.59	69.54	81.75	
7,100.00	1.04	290.85	7,096.79	28.73	76.19	69.34	81.43	
7,125.00	1.17	290.85	7,121.78	28.90	75.74	69.11	81.07	
7,150.00	1.30	297.19	7,146.78	29.12	75.25	68.84	80.69	
7,175.00	1.29	296.19	7,171.77	29.38	74.75	68.54	80.31	
7,200.00	1.08	295.63	7,196.77	29.60	74.28	68.27	79.96	
7,225.00	1.24	300.95	7,221.76	29.84	73.84	67.99	79.64	
7,250.00	1.05	306.40	7,246.76	30.12	73.42	67.70	79.36	
7,275.00	1.09	305.70	7,271.75	30.39	73.04	67.41	79.12	
7,300.00	1.09	303.77	7,296.75	30.66	72.65	67.12	78.86	
7,325.00	1.23	299.64	7,321.74	30.93	72.22	66.82	78.57	
7,332.00	0.96	300.12	7,328.74	31.00	72.11	66.74	78.49	

Checked By: _____ Approved By: _____ Date: _____



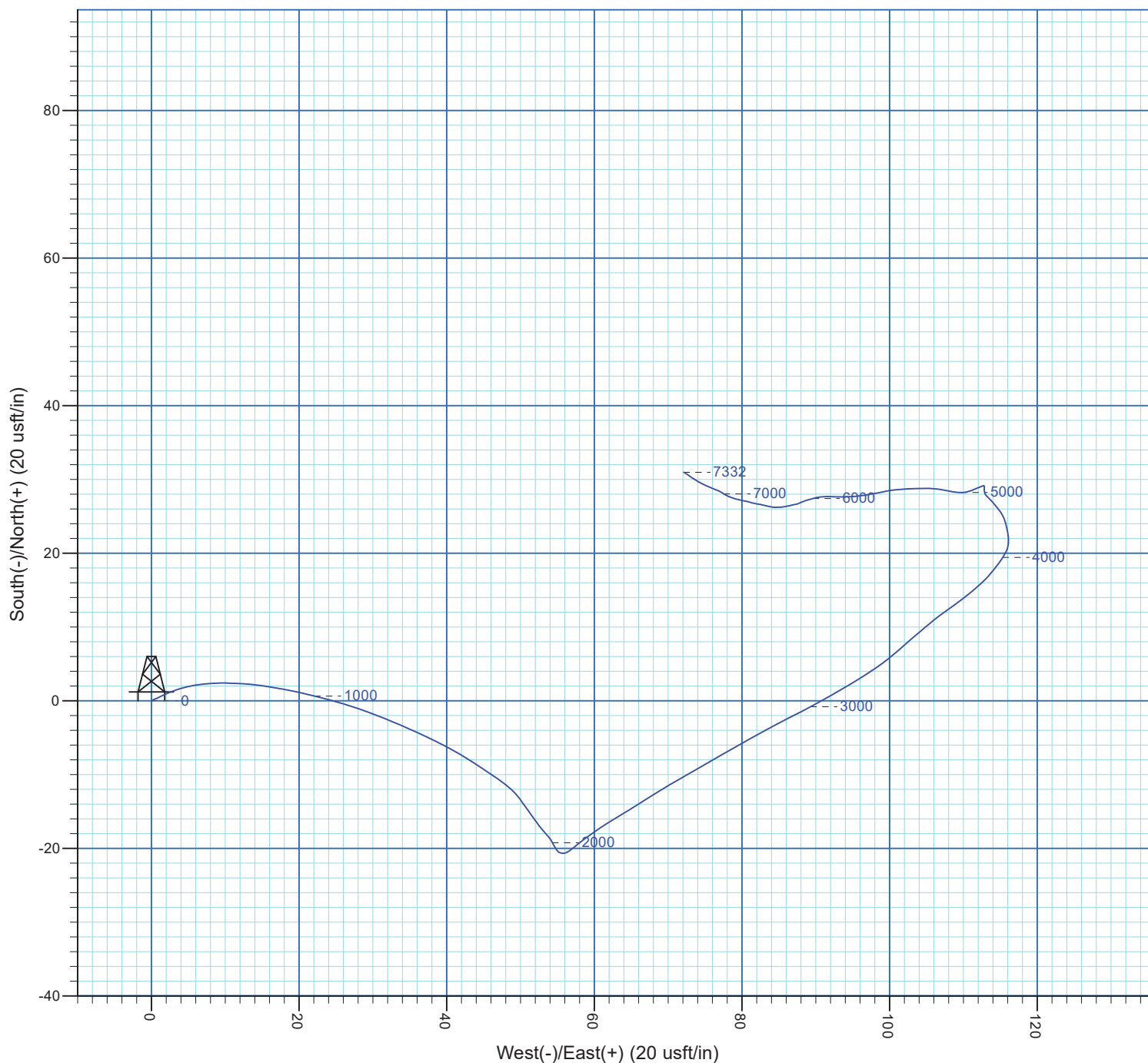
Project: Andrews County, TX (NAD 27 TC)
Fullerton Clearfork Unit #7343
Well: Fullerton Clearfork Unit #7343
Wellbore: OH
Design: OH

WELL DETAILS: Fullerton Clearfork Unit #7343

KB = 13 @ 3298.00usft (Original Well Elev)

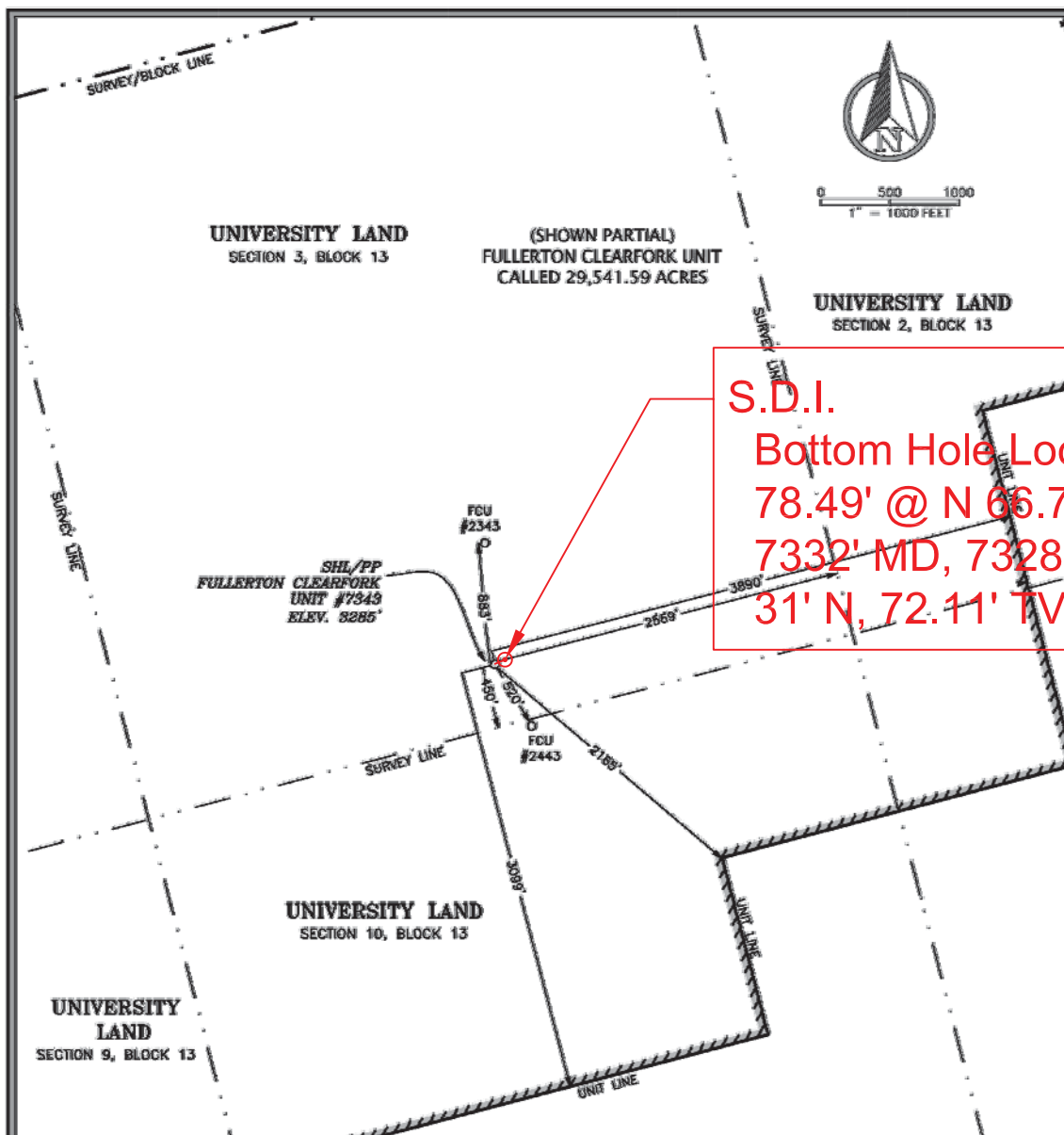
Ground Level: 3285.00

+N/-S	+E/-W	Northing	Easting	Latitude	Longitude	Slot
0.00	0.00	1008364.52	1249595.70	32° 24' 59.174 N	102° 45' 52.585 W	



PROJECT DETAILS: Andrews County, TX (NAD 27 TC)
Geodetic System: US State Plane 1927 (Exact solution)
Datum: NAD 1927 (NADCON CONUS)
Ellipsoid: Clarke 1866
Zone: Texas Central 4203
System Datum: Mean Sea Level

SITE DETAILS: Fullerton Clearfork Unit #7343
Site Centre Latitude: 32° 24' 59.174 N
Longitude: 102° 45' 52.585 W
Positional Uncertainty: 0.00
Convergence: -1.25
Local North: Grid



GENERAL NOTES

1. COORDINATES SHOWN ARE BASED ON TEXAS PLANE COORDINATE SYSTEM OF NAD 27, TEXAS CENTRAL ZONE, 4283.
2. VERTICAL DATUM IS NAVD83.
3. LATITUDE AND LONGITUDE ARE NAD 27 AS SHOWN.
4. AREA, DISTANCES, AND COORDINATES ARE "GRID".
5. UNITS ARE UNITED STATES SURVEY FOOT.
6. ALL LEASE AND TRACT INFORMATION SHOWN HERE ON IS DONE SO BY LIMITED DEED RECORD INFORMATION ONLY. ALL ACRESAGES SHOWN ARE BY DEED AND LEASE CALL, EXCEPT WHERE NOTED. THIS IS NOT IN ANY WAY A "BOUNDARY SURVEY".

DRIVING DIRECTIONS TO LOCATION:
FROM THE INTERSECTION OF MAIN ST. AND BROADWAY ST. IN ANDREWS HEAD WEST ON BROADWAY ST. APPROX. 1.1 MILES. TAKE SLIGHT RIGHT ON RANCH ROAD 67 AND GO APPROX. 12.5 MILES. TURN RIGHT ON FM 181 AND GO APPROX. 3.5 MILES. TURN RIGHT ON NW 6850 AND GO APPROX. 1.1 MILES. TURN LEFT ON NW 5501 AND GO APPROX. AND GO 0.3 MILES. TURN RIGHT ON LEASE ROAD AND GO APPROX. 0.4 MILES AND ARRIVE AT THE LOCATION ON THE RIGHT.

WELL LOCATION INFORMATION:

SURFACE HOLE LOCATION/PP:
NAD 83, TEXAS CENTRAL ZONE COORD'S
Y = 10,850,948.92, X = 1,545,055.46
LAT: N 32.41655°, LONG: W 102.76505°
SHL: 450' FSL & 2,968' FBL
SWL: 3,099' FSL & 3,899' FBL

NAD 27, TEXAS CENTRAL ZONE COORD'S
Y = 1,008,364.52, X = 1,249,595.70
LAT: N 32.41644°, LONG: W 102.76465°

FOR RRC PURPOSES ONLY:

NAD 27, TEXAS NORTH CENTRAL ZONE COORD'S
Y = 313,458.63, X = 376,058.66
LAT: N 32.43660°, LONG: W 102.76481°

I HEREBY STATE THAT THIS PLAT
SHOWS THE SUBJECT SURFACE
LOCATION AS STAKED ON THE GROUND.

[Signature]

MARK DILLON HARP
REGISTERED PROFESSIONAL LAND SURVEYOR
STATE OF TEXAS NO. 6445



FRANK
SURVEYING COMPANY INC.
550 Bailey Ave., 205 - Fort Worth, TX 76107
Ph: 817.349.9800 - Fax: 979.732.5271
TRPLS Firm No. 10193687
WWW.FRANKSURVEYING.COM
LAND SURVEYING/ENERGY/GAS SERVICES
© November 2004 - ALL RIGHTS RESERVED

PLAT OF:
A PROPOSED WELL LOCATION FOR:
XTO ENERGY INC.
FULLERTON CLEARFORK UNIT #7343
SITUATED IN THE UNIVERSITY LAND SURVEY, SECTION 3, BLOCK
13, LOCATED 14.5 MILES NORTHWEST OF ANDREWS, IN ANDREWS
COUNTY, TEXAS

DATE: 5-12-2016
DRAWN BY: AJ
CHECKED BY: DH/CH
FIELD CREW: BK&DM
PROJECT NO: 2015040483
SCALE: 1" = 1000'
SHEET: 1 OF 1
REVISION: 2



Scientific Drilling International, Inc.

325 S. Faudree Rd. • Odessa, Texas 79761

P. O. Box 9699 • Midland, Texas 79708

Tel: 432-689-5600 • Fax: 432-697-0324

Date: 07-08-16
State of Texas
County of Midland

I, HEUSEYAN SAUCOFF, certify that I am employed by Scientific Drilling International;
that on the day (s) of 07/08/16 through 07/08/16 conduct or supervised the taking
of Gyro/MWD from the depth of 100 feet to a depth of 7332 feet; that the data is true,
(Circle)
correct, complete and within the limitations of the tool as set forth by Scientific Drilling

International; that I am authorized and qualified to make this report, and that this survey was
conducted at the request of:

XTO

Company

Bellerton Clearfork Unit #7343

Well Name

OH

API# 42-003-47241

Original Hole (OH) OR Sidetrack Hole (ST)

located in Andrews, Texas, and that I have reviewed this report and find
County

that it conforms to the principles and procedures as set forth by Scientific Drilling International.

Employee Signature