



XTO

# SURVEY REPORT

FULLERTON CLEARFORK UNIT #7218 RENEGADE CRANE TRUCK #62 5/18/2017



The **Ultimate Partner** In Wellbore Placement

CUSTOMER XTO  
PROJECT Fullerton Clearfork Unit #7218  
FIELD Fullerton Clearfork Unit #7218

SDI JOB NO. OP.001507  
SDI DISTRICT Midland  
SDI KIT/UNIT

### SITE INFORMATION

Site Name Fullerton Clearfork Unit #7218  
Lat/Long 32.40935° N, 102.8189° W  
Northing 1,006,155.51 ft  
Easting 1,232,784.5 ft

Section  
Township  
Range

### MAP INFORMATION

North Reference Grid North  
Grid Correction 2.90 deg  
System US State Plane 1927  
Datum North American Datum 1927 (Clarke 1866)  
Map Zone Texas Central: 4203



### WELL INFORMATION

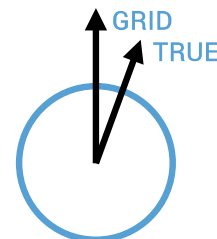
Lat/Long 32.40935° N, 102.8189° W  
Northing 1,006,155.51 ft  
Easting 1,232,784.5 ft  
UWI 42-003-47233

### DEPTH AND ELEVATION REFERENCE

Ground Level 3336 ft above Mean Sea Level  
Reference Datum RKB  
Reference Height 13 ft above G.L.  
Reference Elevation 3349 ft

### VERTICAL SECTION REFERENCE

+N/-S 0 ft  
+E/-W 0 ft  
Proposal Direction 13.45°  
Calculation Method Minimum Curvature



### LOCAL GRAVITY REFERENCE INFORMATION

Local Gravity 998.523 mG [computed]  
True to Grid add 2.9°

### WELL NOTES

Keeper Gyro Wireline Survey in 5 1/2 Casing to 7285 ft

### OPERATORS

Nathan Yerby

SDI Operator Name (Printed)

SIGNATURE

DATE

MD	INC	AZIM	TVD	VS	+N/-S	+E/-W	DLS	CLOSURE DIST	CLOSURE DIR
ft	deg	deg	ft	ft	ft	ft	°/100ft	ft	deg
0.00	0.00	0.00	0.00	0.00	0.00	0.00	Invalid	0.00	0.00
100.00	0.52	359.14	100.00	0.44	0.46	-0.01	0.52	0.46	359.14
125.00	0.52	0.64	125.00	0.66	0.68	-0.01	0.06	0.68	359.39
150.00	0.50	0.85	150.00	0.88	0.91	0.00	0.10	0.91	359.72
175.00	0.48	0.52	175.00	1.09	1.12	0.00	0.08	1.12	359.90
200.00	0.45	359.26	199.99	1.29	1.32	0.00	0.12	1.32	359.90
225.00	0.39	359.68	224.99	1.46	1.51	0.00	0.24	1.51	359.85
250.00	0.40	354.96	249.99	1.63	1.68	-0.01	0.14	1.68	359.58
275.00	0.45	352.72	274.99	1.80	1.86	-0.03	0.18	1.86	359.01
300.00	0.46	355.97	299.99	1.99	2.06	-0.05	0.13	2.06	358.56
325.00	0.45	1.63	324.99	2.19	2.26	-0.06	0.19	2.26	358.58
350.00	0.42	1.78	349.99	2.37	2.45	-0.05	0.15	2.45	358.82
375.00	0.33	1.36	374.99	2.53	2.61	-0.05	0.33	2.61	359.00
400.00	0.31	356.63	399.99	2.67	2.75	-0.05	0.15	2.75	359.00
425.00	0.31	351.62	424.99	2.79	2.89	-0.06	0.11	2.89	358.77
450.00	0.30	345.60	449.99	2.91	3.02	-0.09	0.14	3.02	358.33
475.00	0.28	341.35	474.99	3.02	3.14	-0.12	0.12	3.14	357.74
500.00	0.33	336.77	499.99	3.13	3.26	-0.17	0.22	3.27	356.98
525.00	0.30	330.21	524.99	3.24	3.39	-0.23	0.18	3.40	356.06
550.00	0.24	334.19	549.99	3.33	3.49	-0.29	0.25	3.51	355.26
575.00	0.25	337.81	574.99	3.42	3.59	-0.33	0.07	3.61	354.70
600.00	0.24	340.89	599.99	3.50	3.69	-0.37	0.07	3.71	354.27
625.00	0.23	339.19	624.99	3.59	3.79	-0.40	0.05	3.81	353.89
650.00	0.18	322.83	649.99	3.65	3.86	-0.45	0.30	3.89	353.41
675.00	0.15	296.64	674.99	3.69	3.91	-0.50	0.32	3.94	352.72
700.00	0.17	286.26	699.99	3.69	3.93	-0.57	0.14	3.97	351.82
725.00	0.21	280.80	724.99	3.69	3.95	-0.65	0.17	4.01	350.72
750.00	0.29	279.74	749.99	3.69	3.97	-0.75	0.33	4.04	349.25
775.00	0.30	281.73	774.99	3.68	4.00	-0.88	0.06	4.09	347.56
800.00	0.32	284.32	799.99	3.68	4.03	-1.01	0.07	4.15	345.87
825.00	0.32	287.11	824.99	3.69	4.06	-1.15	0.06	4.22	344.24
850.00	0.31	289.73	849.98	3.70	4.11	-1.28	0.06	4.30	342.72

MD	INC	AZIM	TVD	VS	+N/-S	+E/-W	DLS	CLOSURE DIST	CLOSURE DIR
ft	deg	deg	ft	ft	ft	ft	°/100ft	ft	deg
875.00	0.29	290.60	874.98	3.71	4.15	-1.40	0.08	4.38	341.34
900.00	0.26	291.55	899.98	3.73	4.20	-1.52	0.13	4.46	340.14
925.00	0.25	287.20	924.98	3.74	4.23	-1.62	0.10	4.53	339.06
950.00	0.24	284.30	949.98	3.75	4.26	-1.72	0.05	4.60	338.00
975.00	0.24	271.69	974.98	3.74	4.28	-1.83	0.21	4.65	336.87
1000.00	0.26	263.74	999.98	3.71	4.27	-1.94	0.16	4.69	335.60
1025.00	0.30	262.21	1024.98	3.66	4.26	-2.06	0.13	4.73	334.19
1050.00	0.29	263.29	1049.98	3.62	4.24	-2.19	0.02	4.77	332.72
1075.00	0.29	266.30	1074.98	3.58	4.23	-2.32	0.06	4.82	331.31
1100.00	0.29	267.32	1099.98	3.54	4.22	-2.44	0.02	4.88	329.97
1125.00	0.26	271.36	1124.98	3.51	4.22	-2.56	0.14	4.94	328.76
1150.00	0.24	277.25	1149.98	3.49	4.23	-2.67	0.14	5.00	327.75
1175.00	0.19	276.73	1174.98	3.48	4.24	-2.76	0.19	5.06	326.93
1200.00	0.16	292.36	1199.98	3.48	4.26	-2.83	0.23	5.12	326.35
1225.00	0.12	302.98	1224.98	3.50	4.29	-2.89	0.19	5.17	326.03
1250.00	0.10	305.83	1249.98	3.51	4.31	-2.93	0.07	5.21	325.83
1275.00	0.09	300.98	1274.98	3.53	4.34	-2.96	0.05	5.25	325.66
1300.00	0.03	5.82	1299.98	3.54	4.35	-2.98	0.33	5.28	325.62
1325.00	0.05	46.11	1324.98	3.56	4.37	-2.97	0.14	5.28	325.79
1350.00	0.04	64.24	1349.98	3.57	4.38	-2.95	0.07	5.28	326.02
1375.00	0.05	10.64	1374.98	3.59	4.40	-2.94	0.18	5.29	326.20
1400.00	0.11	15.34	1399.98	3.63	4.43	-2.93	0.22	5.31	326.48
1425.00	0.14	25.22	1424.98	3.68	4.48	-2.92	0.14	5.35	326.95
1450.00	0.14	6.20	1449.98	3.74	4.54	-2.90	0.19	5.39	327.43
1475.00	0.17	335.65	1474.98	3.80	4.60	-2.91	0.35	5.45	327.69
1500.00	0.17	327.57	1499.98	3.86	4.67	-2.95	0.10	5.52	327.75
1525.00	0.14	326.81	1524.98	3.90	4.73	-2.98	0.12	5.59	327.74
1550.00	0.15	327.07	1549.98	3.95	4.78	-3.02	0.04	5.65	327.73
1575.00	0.19	325.35	1574.98	4.00	4.84	-3.06	0.15	5.73	327.71
1600.00	0.25	326.00	1599.98	4.06	4.92	-3.11	0.26	5.82	327.68
1625.00	0.24	332.79	1624.98	4.14	5.01	-3.17	0.13	5.93	327.71
1650.00	0.20	337.65	1649.98	4.21	5.10	-3.21	0.16	6.02	327.82

MD	INC	AZIM	TVD	VS	+N/-S	+E/-W	DLS	CLOSURE DIST	CLOSURE DIR
ft	deg	deg	ft	ft	ft	ft	°/100ft	ft	deg
1675.00	0.23	334.78	1674.98	4.29	5.18	-3.24	0.13	6.12	327.95
1700.00	0.23	357.76	1699.98	4.37	5.28	-3.27	0.37	6.21	328.24
1725.00	0.32	29.57	1724.98	4.49	5.39	-3.24	0.69	6.29	329.03
1750.00	0.50	39.31	1749.98	4.66	5.54	-3.13	0.77	6.36	330.50
1775.00	0.57	42.23	1774.98	4.86	5.71	-2.98	0.32	6.44	332.46
1800.00	0.60	45.52	1799.98	5.09	5.90	-2.80	0.18	6.53	334.60
1825.00	0.64	46.46	1824.97	5.31	6.09	-2.61	0.15	6.62	336.82
1850.00	0.65	45.37	1849.97	5.55	6.28	-2.40	0.06	6.73	339.06
1875.00	0.64	45.86	1874.97	5.79	6.48	-2.20	0.06	6.84	341.21
1900.00	0.63	48.45	1899.97	6.02	6.67	-2.00	0.11	6.96	343.30
1925.00	0.64	47.37	1924.97	6.25	6.85	-1.79	0.06	7.08	345.33
1950.00	0.64	44.21	1949.97	6.48	7.05	-1.59	0.14	7.23	347.26
1975.00	0.62	44.92	1974.97	6.72	7.24	-1.40	0.09	7.38	349.05
2000.00	0.62	44.63	1999.96	6.95	7.43	-1.21	0.01	7.53	350.74
2025.00	0.62	43.41	2024.96	7.18	7.63	-1.02	0.06	7.70	352.36
2050.00	0.63	46.19	2049.96	7.41	7.82	-0.83	0.12	7.87	353.93
2075.00	0.63	46.17	2074.96	7.64	8.01	-0.63	0.01	8.04	355.47
2100.00	0.68	46.13	2099.96	7.88	8.21	-0.43	0.19	8.22	357.01
2125.00	0.73	48.06	2124.96	8.14	8.42	-0.20	0.23	8.42	358.61
2150.00	0.73	50.52	2149.95	8.40	8.63	0.04	0.13	8.63	0.24
2175.00	0.74	56.35	2174.95	8.64	8.82	0.29	0.30	8.82	1.91
2200.00	0.75	53.20	2199.95	8.89	9.00	0.56	0.17	9.02	3.55
2225.00	0.80	51.61	2224.95	9.15	9.21	0.83	0.24	9.25	5.13
2250.00	1.02	56.24	2249.94	9.45	9.44	1.15	0.91	9.51	6.94
2275.00	1.15	57.65	2274.94	9.79	9.70	1.55	0.55	9.82	9.06
2300.00	1.19	57.96	2299.93	10.16	9.97	1.98	0.14	10.17	11.22
2325.00	1.22	58.20	2324.93	10.53	10.25	2.42	0.14	10.53	13.31
2350.00	1.22	57.59	2349.92	10.91	10.53	2.88	0.05	10.92	15.28
2375.00	1.23	59.81	2374.92	11.29	10.81	3.33	0.19	11.31	17.14
2400.00	1.24	59.59	2399.91	11.66	11.08	3.80	0.05	11.72	18.92
2425.00	1.25	59.41	2424.91	12.04	11.36	4.27	0.02	12.14	20.59
2450.00	1.25	59.54	2449.90	12.42	11.64	4.74	0.02	12.56	22.15

MD	INC	AZIM	TVD	VS	+N/-S	+E/-W	DLS	CLOSURE DIST	CLOSURE DIR
ft	deg	deg	ft	ft	ft	ft	°/100ft	ft	deg
2475.00	1.27	58.50	2474.89	12.80	11.92	5.21	0.12	13.01	23.61
2500.00	1.30	58.00	2499.89	13.20	12.22	5.69	0.13	13.47	24.96
2525.00	1.33	57.63	2524.88	13.61	12.52	6.17	0.13	13.96	26.24
2550.00	1.33	58.02	2549.87	14.03	12.83	6.66	0.04	14.46	27.45
2575.00	1.34	57.12	2574.87	14.45	13.14	7.16	0.09	14.97	28.57
2600.00	1.38	56.06	2599.86	14.88	13.47	7.65	0.18	15.49	29.60
2625.00	1.37	55.74	2624.85	15.33	13.81	8.15	0.04	16.03	30.55
2650.00	1.35	55.17	2649.85	15.77	14.15	8.64	0.10	16.58	31.42
2675.00	1.35	55.93	2674.84	16.20	14.48	9.13	0.07	17.12	32.23
2700.00	1.36	55.35	2699.83	16.64	14.81	9.62	0.08	17.66	32.99
2725.00	1.37	54.56	2724.82	17.09	15.16	10.10	0.08	18.21	33.69
2750.00	1.35	54.21	2749.82	17.54	15.50	10.59	0.07	18.77	34.33
2775.00	1.36	52.87	2774.81	17.99	15.85	11.06	0.13	19.33	34.91
2800.00	1.37	53.12	2799.80	18.45	16.21	11.54	0.03	19.90	35.44
2825.00	1.26	52.02	2824.80	18.90	16.56	11.99	0.44	20.45	35.92
2850.00	1.12	51.36	2849.79	19.30	16.88	12.40	0.55	20.95	36.30
2875.00	1.06	50.64	2874.79	19.68	17.18	12.77	0.24	21.41	36.63
2900.00	1.06	50.05	2899.78	20.05	17.48	13.13	0.05	21.86	36.91
2925.00	1.07	49.69	2924.78	20.43	17.78	13.48	0.04	22.31	37.18
2950.00	1.04	49.21	2949.77	20.80	18.07	13.83	0.11	22.76	37.43
2975.00	1.01	49.63	2974.77	21.16	18.37	14.17	0.12	23.20	37.66
3000.00	0.96	50.35	2999.77	21.50	18.64	14.50	0.22	23.62	37.88
3025.00	0.92	51.63	3024.76	21.83	18.90	14.82	0.17	24.02	38.10
3050.00	0.94	53.24	3049.76	22.14	19.15	15.14	0.14	24.41	38.34
3075.00	0.93	51.94	3074.76	22.46	19.40	15.47	0.10	24.81	38.57
3100.00	0.88	51.07	3099.75	22.77	19.64	15.77	0.19	25.19	38.77
3125.00	0.88	51.87	3124.75	23.08	19.88	16.08	0.05	25.57	38.96
3150.00	0.89	52.08	3149.75	23.38	20.12	16.38	0.04	25.94	39.15
3175.00	0.89	51.44	3174.74	23.68	20.36	16.69	0.04	26.33	39.34
3200.00	0.90	52.20	3199.74	23.99	20.60	16.99	0.05	26.71	39.52
3225.00	0.87	52.04	3224.74	24.29	20.84	17.30	0.12	27.08	39.70
3250.00	0.87	52.77	3249.74	24.59	21.07	17.60	0.04	27.45	39.87

MD	INC	AZIM	TVD	VS	+N/-S	+E/-W	DLS	CLOSURE DIST	CLOSURE DIR
ft	deg	deg	ft	ft	ft	ft	°/100ft	ft	deg
3275.00	0.86	55.74	3274.73	24.87	21.29	17.90	0.18	27.82	40.06
3300.00	0.84	59.87	3299.73	25.14	21.49	18.22	0.27	28.17	40.29
3325.00	0.81	61.88	3324.73	25.38	21.66	18.53	0.15	28.51	40.55
3350.00	0.80	61.89	3349.72	25.61	21.83	18.84	0.04	28.84	40.80
3375.00	0.78	62.90	3374.72	25.84	21.99	19.15	0.10	29.16	41.05
3400.00	0.71	49.57	3399.72	26.08	22.17	19.42	0.75	29.47	41.22
3425.00	0.73	38.45	3424.72	26.35	22.39	19.64	0.57	29.78	41.25
3450.00	0.75	51.11	3449.72	26.62	22.62	19.86	0.65	30.10	41.29
3475.00	0.74	43.90	3474.71	26.89	22.84	20.10	0.38	30.42	41.35
3500.00	0.71	48.57	3499.71	27.15	23.06	20.33	0.26	30.74	41.40
3525.00	0.73	49.93	3524.71	27.41	23.26	20.57	0.10	31.05	41.48
3550.00	0.73	47.15	3549.71	27.67	23.47	20.81	0.14	31.37	41.55
3575.00	0.77	47.17	3574.71	27.94	23.70	21.05	0.17	31.69	41.61
3600.00	0.80	48.24	3599.70	28.23	23.93	21.30	0.14	32.04	41.68
3625.00	0.79	46.52	3624.70	28.52	24.16	21.56	0.11	32.38	41.74
3650.00	0.81	42.44	3649.70	28.82	24.41	21.80	0.24	32.73	41.77
3675.00	0.82	37.47	3674.70	29.13	24.69	22.03	0.29	33.09	41.75
3700.00	0.81	33.95	3699.69	29.47	24.98	22.24	0.20	33.44	41.68
3725.00	0.79	32.67	3724.69	29.79	25.27	22.43	0.14	33.79	41.60
3750.00	0.78	29.36	3749.69	30.12	25.56	22.61	0.18	34.12	41.49
3775.00	0.76	25.90	3774.69	30.44	25.86	22.76	0.20	34.45	41.36
3800.00	0.74	23.94	3799.68	30.76	26.15	22.90	0.13	34.76	41.21
3825.00	0.67	17.27	3824.68	31.07	26.44	23.01	0.43	35.05	41.03
3850.00	0.61	10.39	3849.68	31.35	26.71	23.08	0.40	35.30	40.83
3875.00	0.60	8.64	3874.68	31.61	26.97	23.12	0.08	35.52	40.60
3900.00	0.61	11.37	3899.68	31.87	27.23	23.17	0.12	35.75	40.39
3925.00	0.60	10.69	3924.68	32.14	27.49	23.22	0.03	35.98	40.18
3950.00	0.59	8.83	3949.68	32.39	27.74	23.26	0.10	36.20	39.98
3975.00	0.58	7.90	3974.67	32.65	28.00	23.30	0.05	36.42	39.77
4000.00	0.57	2.41	3999.67	32.90	28.25	23.32	0.22	36.63	39.54
4025.00	0.60	356.97	4024.67	33.15	28.50	23.32	0.25	36.83	39.29
4050.00	0.59	356.43	4049.67	33.39	28.76	23.30	0.06	37.02	39.01



MD	INC	AZIM	TVD	VS	+N/-S	+E/-W	DLS	CLOSURE DIST	CLOSURE DIR
ft	deg	deg	ft	ft	ft	ft	°/100ft	ft	deg
4075.00	0.53	358.19	4074.67	33.63	29.01	23.29	0.24	37.20	38.76
4100.00	0.55	357.11	4099.67	33.85	29.24	23.28	0.07	37.38	38.53
4125.00	0.57	355.71	4124.67	34.09	29.48	23.27	0.09	37.56	38.28
4150.00	0.55	356.80	4149.67	34.32	29.72	23.25	0.09	37.74	38.03
4175.00	0.53	356.07	4174.66	34.54	29.96	23.24	0.08	37.91	37.80
4200.00	0.48	350.84	4199.66	34.75	30.18	23.21	0.27	38.07	37.57
4225.00	0.44	347.45	4224.66	34.93	30.37	23.17	0.17	38.21	37.34
4250.00	0.46	349.59	4249.66	35.11	30.57	23.13	0.08	38.34	37.12
4275.00	0.50	345.64	4274.66	35.30	30.77	23.09	0.22	38.47	36.88
4300.00	0.46	341.68	4299.66	35.48	30.97	23.03	0.22	38.60	36.64
4325.00	0.41	341.16	4324.66	35.64	31.15	22.97	0.20	38.70	36.41
4350.00	0.41	342.17	4349.66	35.79	31.32	22.92	0.04	38.81	36.19
4375.00	0.47	345.98	4374.66	35.96	31.50	22.86	0.25	38.93	35.97
4400.00	0.55	345.59	4399.66	36.16	31.72	22.81	0.31	39.07	35.72
4425.00	0.56	345.93	4424.66	36.37	31.95	22.75	0.04	39.22	35.45
4450.00	0.53	344.74	4449.65	36.58	32.18	22.69	0.10	39.38	35.18
4475.00	0.57	343.02	4474.65	36.79	32.41	22.62	0.14	39.53	34.91
4500.00	0.54	343.74	4499.65	37.00	32.65	22.55	0.10	39.68	34.64
4525.00	0.51	342.73	4524.65	37.19	32.87	22.49	0.12	39.82	34.38
4550.00	0.51	340.69	4549.65	37.38	33.08	22.42	0.08	39.96	34.13
4575.00	0.51	341.44	4574.65	37.57	33.29	22.34	0.04	40.09	33.87
4600.00	0.52	343.38	4599.65	37.77	33.50	22.28	0.08	40.23	33.62
4625.00	0.51	344.31	4624.65	37.96	33.72	22.21	0.08	40.38	33.38
4650.00	0.51	346.47	4649.65	38.16	33.93	22.16	0.08	40.53	33.15
4675.00	0.49	344.02	4674.65	38.35	34.14	22.10	0.11	40.67	32.92
4700.00	0.48	344.00	4699.64	38.53	34.35	22.04	0.05	40.81	32.69
4725.00	0.38	343.18	4724.64	38.70	34.53	21.99	0.39	40.94	32.49
4750.00	0.27	332.30	4749.64	38.81	34.66	21.94	0.50	41.02	32.33
4775.00	0.26	323.81	4774.64	38.90	34.76	21.88	0.17	41.07	32.19
4800.00	0.25	332.55	4799.64	38.97	34.85	21.82	0.16	41.12	32.05
4825.00	0.26	327.49	4824.64	39.05	34.95	21.77	0.10	41.17	31.92
4850.00	0.25	318.57	4849.64	39.12	35.04	21.70	0.16	41.21	31.77



MD	INC	AZIM	TVD	VS	+N/-S	+E/-W	DLS	CLOSURE DIST	CLOSURE DIR
ft	deg	deg	ft	ft	ft	ft	°/100ft	ft	deg
4875.00	0.25	321.50	4874.64	39.19	35.12	21.63	0.06	41.25	31.63
4900.00	0.23	316.75	4899.64	39.25	35.20	21.56	0.10	41.28	31.49
4925.00	0.26	309.76	4924.64	39.30	35.27	21.48	0.15	41.30	31.35
4950.00	0.27	314.66	4949.64	39.36	35.35	21.40	0.12	41.32	31.19
4975.00	0.33	313.62	4974.64	39.42	35.44	21.30	0.24	41.35	31.01
5000.00	0.37	307.01	4999.64	39.49	35.54	21.19	0.20	41.38	30.80
5025.00	0.41	310.62	5024.64	39.57	35.65	21.06	0.19	41.40	30.57
5050.00	0.41	308.21	5049.64	39.64	35.76	20.92	0.07	41.43	30.33
5075.00	0.41	298.30	5074.64	39.70	35.85	20.77	0.28	41.44	30.08
5100.00	0.38	295.39	5099.64	39.74	35.93	20.62	0.13	41.43	29.85
5125.00	0.36	299.35	5124.64	39.78	36.01	20.47	0.14	41.42	29.62
5150.00	0.38	302.69	5149.64	39.83	36.09	20.34	0.10	41.42	29.40
5175.00	0.39	282.83	5174.64	39.86	36.15	20.18	0.53	41.41	29.17
5200.00	0.38	281.71	5199.64	39.85	36.19	20.02	0.04	41.36	28.95
5225.00	0.37	293.72	5224.64	39.86	36.24	19.86	0.32	41.33	28.73
5250.00	0.31	297.73	5249.64	39.90	36.30	19.73	0.25	41.32	28.52
5275.00	0.26	300.55	5274.63	39.93	36.36	19.62	0.24	41.32	28.35
5300.00	0.25	292.88	5299.63	39.95	36.41	19.52	0.14	41.32	28.20
5325.00	0.31	302.82	5324.63	39.99	36.47	19.42	0.29	41.32	28.03
5350.00	0.33	293.76	5349.63	40.02	36.53	19.29	0.22	41.32	27.84
5375.00	0.28	278.18	5374.63	40.03	36.57	19.17	0.38	41.29	27.66
5400.00	0.28	270.50	5399.63	40.01	36.58	19.05	0.15	41.24	27.50
5425.00	0.28	273.59	5424.63	39.98	36.59	18.92	0.06	41.19	27.35
5450.00	0.29	281.80	5449.63	39.97	36.60	18.80	0.17	41.15	27.19
5475.00	0.33	278.76	5474.63	39.96	36.63	18.67	0.16	41.11	27.01
5500.00	0.35	275.91	5499.63	39.95	36.64	18.52	0.11	41.06	26.82
5525.00	0.40	268.73	5524.63	39.92	36.65	18.36	0.30	40.99	26.61
5550.00	0.39	270.48	5549.63	39.88	36.65	18.19	0.08	40.91	26.39
5575.00	0.37	279.74	5574.63	39.85	36.66	18.02	0.26	40.85	26.18
5600.00	0.34	283.62	5599.63	39.85	36.69	17.87	0.15	40.82	25.97
5625.00	0.32	285.72	5624.63	39.85	36.73	17.74	0.10	40.79	25.77
5650.00	0.34	290.12	5649.63	39.86	36.78	17.60	0.13	40.77	25.57

MD ft	INC deg	AZIM deg	TVD ft	VS ft	+N/-S ft	+E/-W ft	DLS °/100ft	CLOSURE DIST ft	CLOSURE DIR deg
5675.00	0.33	301.43	5674.63	39.89	36.84	17.47	0.27	40.77	25.37
5700.00	0.36	312.81	5699.63	39.95	36.93	17.35	0.31	40.80	25.17
5725.00	0.39	319.40	5724.63	40.04	37.05	17.24	0.21	40.86	24.95
5750.00	0.41	330.70	5749.63	40.16	37.19	17.14	0.33	40.95	24.74
5775.00	0.42	340.58	5774.63	40.30	37.36	17.06	0.29	41.07	24.55
5800.00	0.44	342.63	5799.63	40.46	37.54	17.00	0.11	41.21	24.37
5825.00	0.49	343.78	5824.62	40.64	37.73	16.94	0.20	41.36	24.18
5850.00	0.55	341.69	5849.62	40.83	37.95	16.88	0.23	41.53	23.97
5875.00	0.57	338.54	5874.62	41.04	38.18	16.79	0.15	41.71	23.74
5900.00	0.58	338.67	5899.62	41.24	38.41	16.70	0.05	41.88	23.50
5925.00	0.64	339.88	5924.62	41.46	38.66	16.61	0.25	42.08	23.25
5950.00	0.67	339.60	5949.62	41.70	38.93	16.51	0.13	42.28	22.98
5975.00	0.66	339.80	5974.62	41.94	39.20	16.41	0.05	42.50	22.71
6000.00	0.66	343.98	5999.61	42.19	39.48	16.32	0.19	42.72	22.46
6025.00	0.66	348.21	6024.61	42.44	39.76	16.25	0.20	42.95	22.23
6050.00	0.70	348.32	6049.61	42.71	40.05	16.19	0.14	43.19	22.01
6075.00	0.72	350.33	6074.61	42.99	40.35	16.13	0.13	43.45	21.79
6100.00	0.72	353.83	6099.61	43.29	40.66	16.09	0.18	43.73	21.59
6125.00	0.69	354.59	6124.61	43.58	40.97	16.06	0.14	44.00	21.40
6150.00	0.66	351.74	6149.60	43.85	41.26	16.02	0.19	44.26	21.22
6175.00	0.66	346.41	6174.60	44.11	41.54	15.97	0.25	44.50	21.03
6200.00	0.65	338.68	6199.60	44.36	41.81	15.88	0.36	44.73	20.80
6225.00	0.61	333.10	6224.60	44.58	42.06	15.77	0.30	44.92	20.55
6250.00	0.58	334.19	6249.60	44.78	42.30	15.65	0.11	45.10	20.31
6275.00	0.55	336.82	6274.60	44.97	42.52	15.55	0.18	45.28	20.09
6300.00	0.47	336.49	6299.60	45.15	42.73	15.46	0.29	45.44	19.90
6325.00	0.46	337.34	6324.59	45.31	42.91	15.38	0.06	45.59	19.72
6350.00	0.48	343.01	6349.59	45.49	43.10	15.31	0.19	45.74	19.56
6375.00	0.47	346.75	6374.59	45.67	43.30	15.26	0.13	45.91	19.41
6400.00	0.50	346.66	6399.59	45.85	43.51	15.21	0.14	46.09	19.27
6425.00	0.50	346.00	6424.59	46.05	43.72	15.16	0.02	46.28	19.12
6450.00	0.51	344.68	6449.59	46.25	43.94	15.10	0.05	46.46	18.97

MD	INC	AZIM	TVD	VS	+N/-S	+E/-W	DLS	CLOSURE DIST	CLOSURE DIR
ft	deg	deg	ft	ft	ft	ft	°/100ft	ft	deg
6475.00	0.45	343.45	6474.59	46.43	44.14	15.05	0.25	46.63	18.82
6500.00	0.37	349.23	6499.59	46.59	44.31	15.00	0.35	46.78	18.71
6525.00	0.39	352.10	6524.59	46.74	44.47	14.98	0.10	46.93	18.61
6550.00	0.40	349.68	6549.59	46.90	44.64	14.95	0.09	47.08	18.51
6575.00	0.36	346.04	6574.59	47.05	44.81	14.92	0.20	47.22	18.41
6600.00	0.31	348.76	6599.59	47.18	44.95	14.88	0.18	47.35	18.32
6625.00	0.34	351.30	6624.59	47.31	45.09	14.86	0.13	47.47	18.24
6650.00	0.37	352.59	6649.59	47.45	45.24	14.84	0.11	47.61	18.16
6675.00	0.37	352.95	6674.59	47.60	45.40	14.82	0.01	47.76	18.07
6700.00	0.35	354.63	6699.58	47.75	45.56	14.80	0.09	47.90	18.00
6725.00	0.31	351.93	6724.58	47.88	45.70	14.78	0.15	48.03	17.93
6750.00	0.35	351.01	6749.58	48.02	45.84	14.76	0.13	48.16	17.85
6775.00	0.37	357.24	6774.58	48.16	46.00	14.75	0.18	48.30	17.78
6800.00	0.34	2.84	6799.58	48.32	46.15	14.75	0.17	48.45	17.72
6825.00	0.29	340.04	6824.58	48.44	46.29	14.73	0.55	48.57	17.65
6850.00	0.31	337.52	6849.58	48.55	46.41	14.68	0.13	48.67	17.55
6875.00	0.40	338.19	6874.58	48.68	46.55	14.62	0.33	48.79	17.44
6900.00	0.35	334.86	6899.58	48.81	46.70	14.56	0.22	48.92	17.31
6925.00	0.23	332.81	6924.58	48.90	46.81	14.50	0.48	49.01	17.21
6950.00	0.16	294.45	6949.58	48.95	46.87	14.45	0.56	49.05	17.13
6975.00	0.26	281.27	6974.58	48.95	46.90	14.36	0.42	49.05	17.03
7000.00	0.40	273.31	6999.58	48.93	46.91	14.22	0.58	49.02	16.86
7025.00	0.34	253.87	7024.58	48.88	46.90	14.06	0.54	48.96	16.69
7050.00	0.35	243.70	7049.58	48.80	46.84	13.92	0.25	48.87	16.55
7075.00	0.40	257.04	7074.58	48.71	46.79	13.77	0.40	48.77	16.40
7100.00	0.48	260.98	7099.58	48.63	46.75	13.58	0.33	48.69	16.20
7125.00	0.55	252.15	7124.58	48.53	46.70	13.36	0.43	48.58	15.97
7150.00	0.66	248.97	7149.58	48.38	46.61	13.12	0.47	48.42	15.72
7175.00	0.75	256.43	7174.57	48.23	46.52	12.82	0.52	48.26	15.41
7200.00	0.81	252.20	7199.57	48.06	46.43	12.49	0.33	48.08	15.06
7225.00	0.86	247.39	7224.57	47.86	46.30	12.15	0.34	47.87	14.70
7250.00	0.88	258.19	7249.57	47.67	46.19	11.79	0.66	47.67	14.32

MD	INC	AZIM	TVD	VS	+N/-S	+E/-W	DLS	CLOSURE DIST	CLOSURE DIR
ft	deg	deg	ft	ft	ft	ft	°/100ft	ft	deg
7275.00	0.95	258.17	7274.56	47.50	46.11	11.40	0.29	47.50	13.89
7299.00	1.07	246.72	7298.56	47.28	45.98	11.00	0.98	47.28	13.45



**W.A. MARSHALL**  
ABSTRACT 625  
SECTION 16, BLOCK A32  
PUBLIC SCHOOL LAND

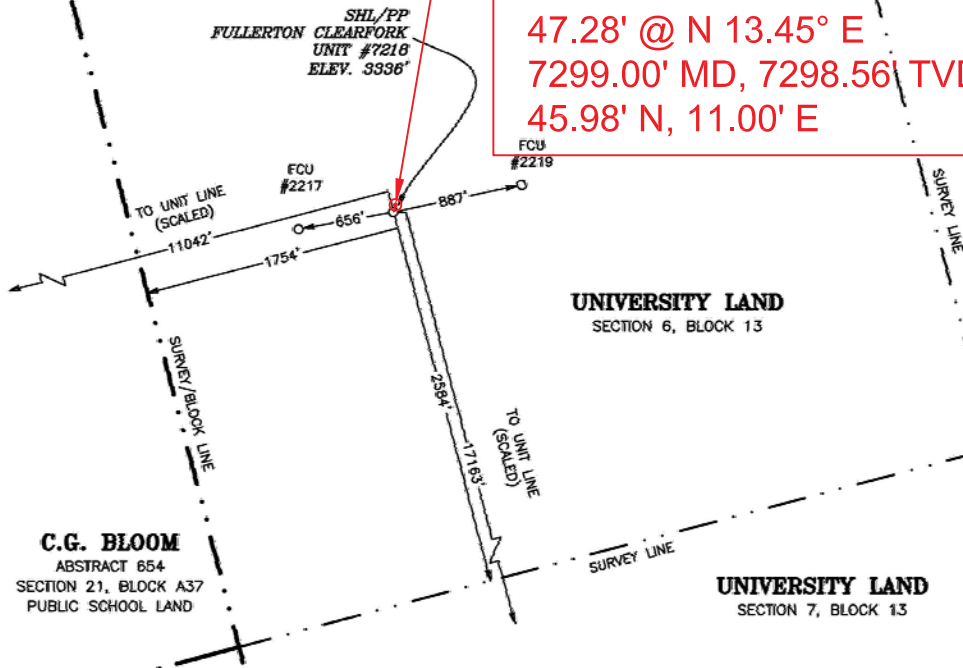
**B.M. IRWIN**  
ABSTRACT 616  
SECTION 17, BLOCK A32  
PUBLIC SCHOOL LAND

**G.W. STANFORD**  
ABSTRACT 644  
SECTION 16, BLOCK A32  
PUBLIC SCHOOL LAND

**UNIVERSITY LAND**  
SECTION 5, BLOCK 13

(SHOWN PARTIAL)  
FULLERTON CLEARFORK UNIT  
CALLED 29,541.59 ACRES

**S.D.I.**  
**Bottom Hole Location**  
**47.28' @ N 13.45° E**  
**7299.00' MD, 7298.56' TVD**  
**45.98' N, 11.00' E**



#### GENERAL NOTES

- COORDINATES SHOWN ARE BASED ON TEXAS PLANE COORDINATE SYSTEM OF NAD 27, TEXAS CENTRAL ZONE, 4203.
- VERTICAL DATUM IS NAVD 88.
- LATITUDE AND LONGITUDE ARE NAD 27 AS SHOWN.
- AREA, DISTANCES, AND COORDINATES ARE "GRID".
- UNITS ARE UNITED STATES SURVEY FOOT.
- ALL LEASE AND TRACT INFORMATION SHOWN HERE ON IS DONE SO BY LIMITED DEED RECORD INFORMATION ONLY. ALL ACRES ARE SHOWN BY DEED AND LEASE CALL, EXCEPT WHERE NOTED. THIS IS NOT IN ANY WAY A "BOUNDARY SURVEY".

DRIVING DIRECTIONS TO LOCATION:  
FROM THE INTERSECTION OF MAIN ST. AND BROADWAY ST. IN ANDREWS HEAD WEST ON BROADWAY ST. APPROX. 1.1 MILES. TAKE SLIGHT RIGHT ON RANCH ROAD 87 AND GO APPROX. 14.9 MILES. TURN RIGHT ON NW 7001 AND GO APPROX. 3.0 MILES. TURN RIGHT ON LEASE ROAD AND GO APPROX. 0.4 MILES AND ARRIVE AT THE LOCATION ON THE LEFT.

#### WELL LOCATION INFORMATION:

SURFACE HOLE LOCATION/PP:  
NAD 83, TEXAS CENTRAL ZONE COORD'S  
Y = 10,848,732.36, X = 1,529,244.05  
LAT: N 32.40946°, LONG: W 102.81935°  
SHL: 2,584' FSL & 1,754' FWL  
SHL: 17,163' FSL & 11,042' FWL

NAD 27, TEXAS CENTRAL ZONE COORD'S  
Y = 1,006,155.51, X = 1,232,784.50  
LAT: N 32.40935°, LONG: W 102.81890°

#### FOR RRC PURPOSES ONLY:

NAD 27, TEXAS NORTH CENTRAL ZONE COORD'S  
Y = 311,736.16, X = 359,196.17  
LAT: N 32.40935°, LONG: W 102.81890°

I HEREBY STATE THAT THIS PLAT  
SHOWS THE SUBJECT SURFACE  
LOCATION AS STAKED ON THE GROUND.

MARK DILLON HARP  
REGISTERED PROFESSIONAL LAND SURVEYOR  
STATE OF TEXAS NO. 6445




**FRANK**  
SURVEYING COMPANY INC.  
550 Bailey Ave., 205 - Fort Worth, TX 76107  
Ph: 817.349.9808 - Fax: 979.732.5271  
TBPLS Firm No. 10193887  
www.franksurveying.com  
LAND SURVEYING/ENERGY/GIS SERVICES  
© COPYRIGHT 2014 - ALL RIGHTS RESERVED

PLAT OF:  
A PROPOSED WELL LOCATION FOR:  
**XTO ENERGY INC.**  
**FULLERTON CLEARFORK UNIT #7218**  
SITUATED IN UNIVERSITY LAND SURVEY, SECTION 6, BLOCK 13,  
LOCATED 17.2 MILES NORTHWEST OF ANDREWS, IN ANDREWS  
COUNTY, TEXAS

DATE: 07-10-2015  
DRAWN BY: AJ  
CHECKED BY: DH/CH  
FIELD CREW: BK&ZM  
PROJECT NO: 2015050635  
SCALE: 1" = 1000'  
SHEET: 1 OF 1  
REVISION: NO

State of Texas  
County of Midland

I, Nathan Yerby, certify that; I am employed by Scientific Drilling International; that I did on the day(s) of 05/18/2017 through 05/18/2017 conduct or supervise the taking of a Keeper Gyro survey from a depth of 100 feet to a depth of 7299 feet; that the data is true, correct, complete and within the limitations of the tool as set forth by Scientific Drilling International; that I am authorized and qualified to make this report; that this survey was conducted at the request of XTO for the Fullerton Clearfork Unit #7218 Well, API# 42-003-47233 in Andrews County, Texas; and that I have reviewed this report and find that it conforms to the principals and procedures as set forth by Scientific Drilling International.

  
\_\_\_\_\_  
Field Technician