

As Drilled SCHEMATIC



Well Name: University 1-26 #5H
Formation: Devonian
County, St: Andrews, TX
SHL: 500' FNL & 400' FWL, Sec. 26, Blk 1, University Lands Survey
BHL: 2099' FNL & 362' FWL, Sec. 27, Blk 1, University Lands Survey

Drilling Engineer: Jason L. Kincaid
Completion Engineer: Mark Solari

GL: 3145'
KB: 25'
RKB: 3170'

API #: 42-003-47118
Spud: 7/4/2016
Rig Down: 11/27/2016
TD: 17,770'

FORMATION TOPS	TVD	MD
Rustler		
Yates	3,157	
San Andres	4,915	
Base San Andres		
Clearfork	6,715	
Wolfcamp	8,557	
Mississippian Shale		
Mississippian Lime		
Woodford Shale		
Devonian	11,023	
Target Depth		

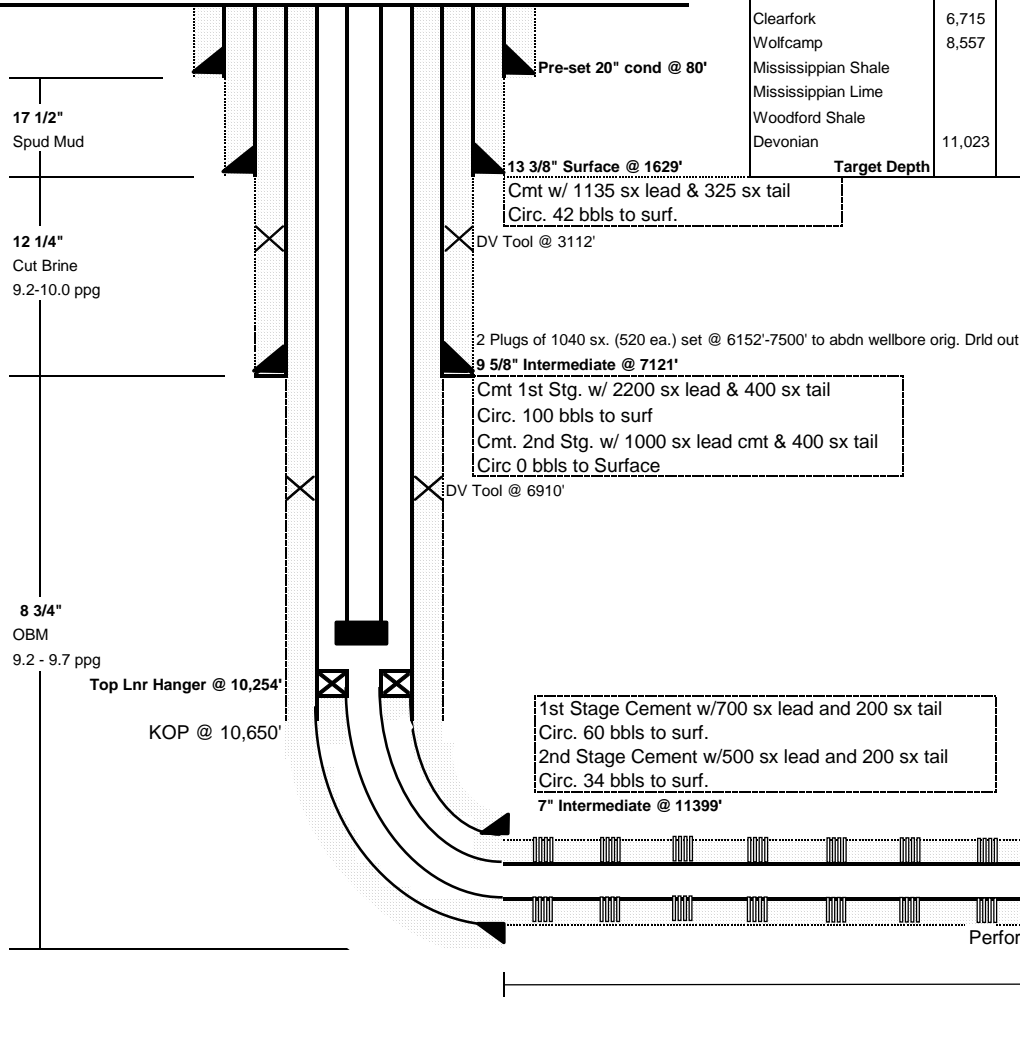
DIRECTIONAL DETAILS								
TARGET	MD	TVD	(°)	AZM	N/S	E/W	VS	DLS
KOP								
Landing Pt								
TD Lateral								

CASING DETAIL									
	Conn	Size	Wt	Grade	*Burst*	Collapse	Start	End	Length
Surface	BTC	13 3/8	54.5	J-55			0	1629	1629
Intermediate	LTC	9 5/8	40	J-55			0	3112	3112
Intermediate	LTC	9 5/8	40	J-55			3112	7121	4009
Intermediate II	LTC	7	26	HCL-80			0	6910	6910
Intermediate II	LTC	7	26	HCL-80			6910	11399	4489
Production		4 1/2	11.6	P-110			10,254	17753	7499

*80%

Tubing Detail: As of: 1/26/17:
 KB= 23'
 303 jts 2-7/8" tbg

Rod Detail: As of: 1/26/17:
 No rods in hole



Cement w/550 sx
 Circ. 18 bbls cmt.
 4 1/2" Liner set @ 17,753'

TD Detail
 MD 17770'
 TVD 11117'
 Inc: 90°

Drilling Fluids	Build Section	Tool	Lateral Section	Tool	Liner System	Cement	AFE No.	Permit No.	API	Prepared By: C. Flanagan
Dynamic					Cemented	Trans-Tex		805597	42-003-47118	Date: 27-Feb-17