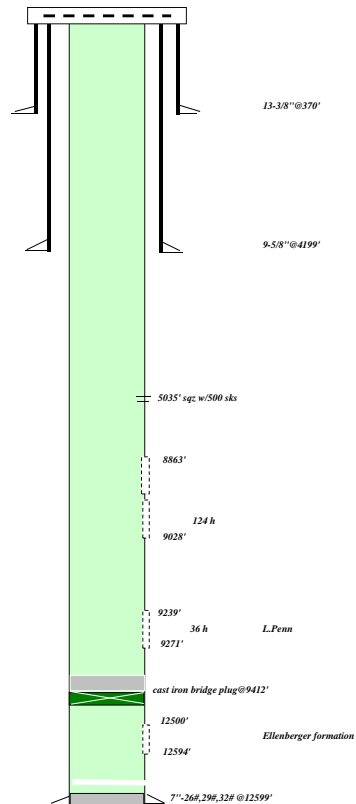


DATE: 2/29/2012		DAILY WORKOVER / COMPLETION REPORT		ISO	
WELL NAME & NO.			FIELD		
MMM#1			TRIPLE N		
API#42-003-01639		TWP	RGE	COUNTY	STATE
				ANDREWS	TX
AFE NO.		W.L. 100%		GROSS AFE	
AFE NO..... Pending					
JOB DESCRIPTION:			SUPPLEMENT 1		
Pull Production equipment, lay down rods and 2-3/8" tubing string					
Drill and clean up wellbore to Ellenberger formation 12499'; Swab test Ellenberger.			TOTAL GROSS AFE		
		SIZE	WT.	GRADE	DEPTH
C		13-3/8"	48#	H-40	370'
S		9-5/8"	36#& 40#	K-55	4,199
G		7"	26# 29#& 32#	N80,S95	12599'
T		2-3/8"	4.60#	L80	8RD
B					
G					
PERFS:					
		TD	PBTD	PERFS	BODY
COST ITEMS	Estimate \$	VENDOR	PKR/TAC	S.N. @	EOT @
					ON-OFF
RIG			WORK PERFORMED		
BACK HOE			Start Time: 8am Stop time: 0:00 pm		
ANCHORS					
ROUSTABOUT					
SUPERVISOR					
REVERSE UNIT			JRC Backhoe, Cleaned up location and leveled off the well area. Spot		
BOPS			3 loads of lime stone and leveled off. Re-spot 2-3/8" used tubing.		
VAC TRUCK					
FISHING TOOLS			Andrew Anchor , Checked perm anchors on location. OK.		
WIRE LINE					
TEST TBG					
			Waiting on Workover rig and AFE approval.		
			Will spot Reverse unit tomorrow to flow the into.		
DAILY COST	0		ACCIDENTS: -0-		
PREVIOUS COST	0		REPORT BY: Hadi		
TOTAL COST	0		PHONE: 361-649-7340		

TRIPLE N WELL# MMM-1

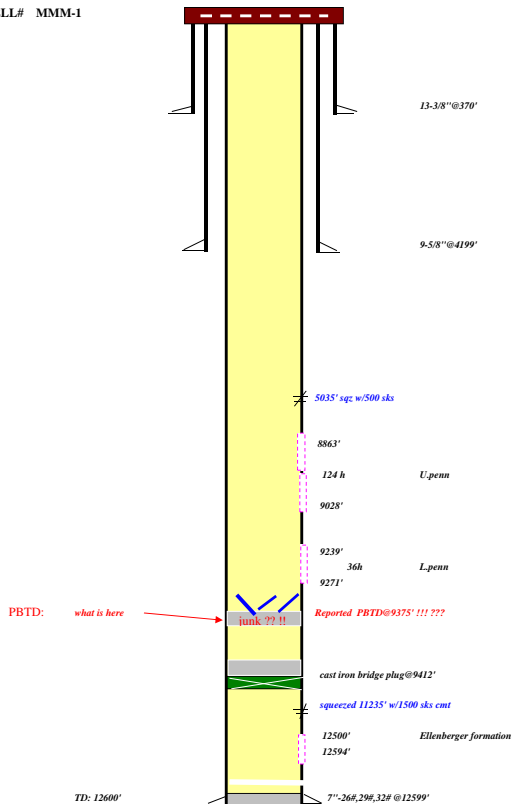


DATE: 3/12/2012 Monday			DAILY WORKOVER / COMPLETION REPORT			ISO		
WELL NAME & NO.					FIELD		TRIPLE N	
MMM#1							COUNTY STATE	
API#42-003-01639		TWP		RGE		ANDREWS		TX
AFE NO.		AFE NO.....		Pending		W.L. 100%		GROSS AFE
JOB DESCRIPTION:					SUPPLEMENT 1			
Pull Production equipment, lay down rods and 2-3/8" tubing string								
Drill and clean up wellbore to Ellenberger formation 12499'. Swab test Ellenberger.					TOTAL GROSS AFE			
		SIZE		WT.		GRADE		DEPTH
C		13-3/8"		48#		H-40		370'
S		9-5/8"		36#& 40#		K-55		4,199
G		7"		26#, 29# & 32#		N80, S95		12599'
T		2-3/8"		4.60#		L80		
B								
G								
PERFS:					TD		PBTD	
					PERFS		BODY	
COST ITEMS		Estimate \$		VENDOR		PKR/TAC		S.N. @
ON-OFF						EOT @		
RIG		1450		Basic		-A		WORK PERFORMED
BACK HOE		350		JRC		-B		Start Time: 1pm Stop time: 6:00 pm
REVERSE UNIT		1450		Hinton		-C		
SUPERVISOR		0		Hadi		-D		
PUMP REPAIR		0		Andrew Pump		-E		Drove rig to well location. Shut well in.
Dope and valve		0		Produ. Special		-F		Held safety meeting with crew. Lock and tag Electric Box.
BOPS		300		Cavaloz		-G		Disconnect flow line from casing and tubing string. Leveled off location
VAC TRUCK								around the wellbore area.
								Rigged up Basic rig, tied guy line to perm anchors on location.
								Rigged up Hinton Reverse unit Already Stand by on location.
								Un-beamed head, Laid down H.head. PU and unsated pump, Laid down
								polished rod and ponny rods off the ground.
								Closed well in.
								SDFN.
						</		

Basic well service 1450 provide service rig
JRC 350 dug dirt pit
Hinton 1450 provide fishing tools, Reverse unit
Hadi 0 supervise operation & fishing
Andrew pump 0 Pump repair
Prod. Specialty 0 Pipe dope, valves, wood seals
Cavaloz 300 provide bop stack.

Daily Cost: \$3,550
C.Cost \$3,550

TRIPLE N WELL# MMM-1



Hadi 2/28/2012

TD: 12600'

Basic well service	3080	8375	provide service rig
JRC	0	350	dug dirt pit
Hinton	1850	5150	provide fishing tools, Reverse unit
Hadi	400	800	supervise operation & fishing
Andrew pump	0	0	Pump repair
Prod. Specialty	0	0	Pipe dope, valves, wood seals
Cavaloz	0	300	provide bop stack.
Tejas Vac Trucks	0	270	huling water to rev pit.

TRIPLE N WELL# MMM-1

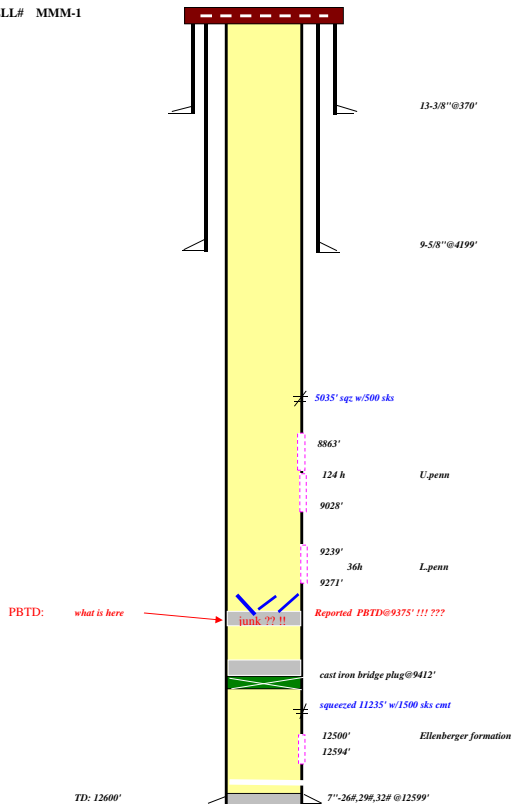


DATE: 3/15/2012		Th	DAILY WORKOVER / COMPLETION REPORT				ISO		
WELL NAME & NO.						FIELD		TRIPLE N	
MMM#1									
API#42-003-01639		TWP		RGE		COUNTY		STATE	TX
AFE NO.		AFE NO..... Pending		W.L. 100%		GROSS AFE			
						\$389,000			
JOB DESCRIPTION:						SUPPLEMENT 1			
Pull Production equipment, lay down rods and 2-3/8" tubing string									
Drill and clean up wellbore to Ellenberger formation 12499'. Swab test Ellenberger.						TOTAL GROSS AFE			
		SIZE		WT.		GRADE		DEPTH	
C		13-3/8"		48#		H-40		370'	
S		9-5/8"		36# & 40#		K-55		4,199	
G		7"		26#, 29# & 32#		N80, S95		12599'	
T		2-3/8"		4.60#		L80			
B									
G									
PERFS:						TD		PBTD	
						PERFS		BODY	
COST ITEMS		Estimate \$		VENDOR		PKR/TAC		S.N. @	
RIG		3660		Basic		-A		EOT @	
BACK HOE		0		JRC		-B		ON-OFF	
REVERSE UNIT		1850		Hinton		-C			
SUPERVISOR		400		Hadi		-D			
PUMP REPAIR		0		Andrew Pump		-E			
Dope and valve		0		Produ. Special		-F			
BOPS		0		Cavaloz		-G			
VAC TRUCK		0		Tejas		-H			
WIRE Line		2000		Rotary		-I			
						Finished pull and laid down tubing and tubing anchor complete.			
						All the parts on tubing anchor came out hole. Finished pull out hole with			
						284 joints of 2-3/8" EUE 8rd tubing (in good condition)			
						7" Tubing anchor catcher			
						15 joints of tubing			
						Seating Nipple with mule shoe assy. Total of 299 jts 2-3/8" tubing.			
						Made up and attempt to run 6-1/8" mill and 6-1/8" shoe would not pass			
						10' below the wellhead. Checked drift with 6-1/8" bit went through.			
						Unload 57 joints new 2-7/8" tubing on location. TIH with tbg open ended			
						while waiting on wash pipe. Closed well in.			
						SDFN.			
						Will continue			
DAILY COST		7,910		AFE \$389000		ACCIDENTS: -0-			
PREVIOUS COST		15,245				REPORT BY: Hadi			
TOTAL COST		23,155		\$23,155		PHONE: 361-649-7340			
				RIG#1215					

Basic well service	3660	12035	provide service rig
JRC	0	350	dug dirt pit
Hinton	1850	7000	provide fishing tools, Reverse unit
Hadi	400	1200	supervise operation & fishing
Andrew pump	0	0	Pump repair
Produ. Specialty	0	0	Pipe dope, valves, wood seals
Cavaloz	0	300	provide bop stack.
Tejas Vac Trucks	0	270	huling water to rev pit.
Rotary wire line	2000	2000	Stand by to cut pipe.

Daily Cost: \$7,910
C.Cost \$23,155

TRIPLE N WELL# MMM-1



Hadi 2/28/2012

TD: 12600'

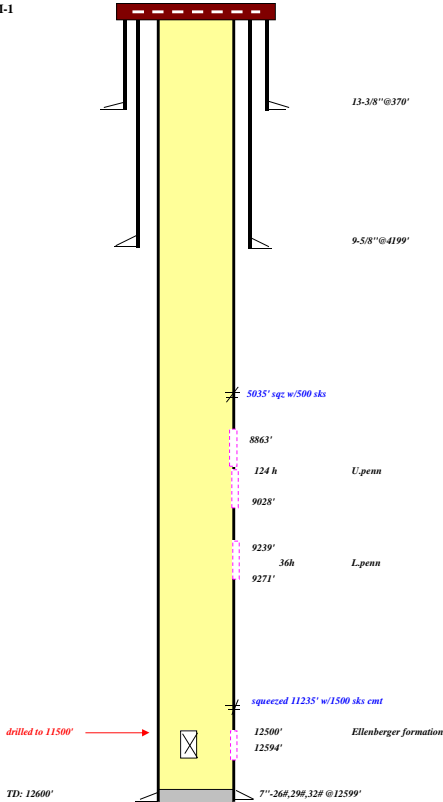
ok

DATE: 3/26/2012		Mond	DAILY WORKOVER / COMPLETION REPORT				ISO		
WELL NAME & NO.						FIELD			
MMM#1						TRIPLE N			
API#042-003-01639			TWP		RGE		COUNTY	STATE	
							ANDREWS	TX	
AFE NO.			W.L. 100%			GROSS AFE			
AFE NO..... Pending						\$389,000			
JOB DESCRIPTION:						SUPPLEMENT 1			
Pull Production equipment, lay down rods and 2-3/8" tubing string									
Drill and clean up wellbore to Ellenberger formation 12599'. Swab test Ellenberger.						TOTAL GROSS AFE			
			SIZE	WT.	GRADE	DEPTH	THREAD		
C	S	G	13-3/8"	48#	H-40	370'	ST&C		
			9-5/8"	36# & 40#	K-55	4,199	LT&C		
			7"	26#, 29# & 32#	N80, S95	12599'	LT&C		
T	B	G	2-3/8"	4.60#	L80		8RD		
PERFS:				TD	PBTD	PERFS	BODY		
COST ITEMS		Estimate \$	VENDOR	PKR/TAC	S.N. @	EOT @	ON-OFF		
RIG	1050	Basic	-A	WORK PERFORMED					
BACK HOE	0	JRC	-B	Start Time: 7am Stop time: 4:30 pm					
REVERSE UNIT	1850	Hinton	-C	Opened well, no pressure. Well on Vac					
SUPERVISOR	400	Hadi	-D	Ex-changed service rig arrived on location.					
PUMP REPAIR	0	Andrew Pump	-E	MI & RU Basic rig # 1623, tied guy lines to perm anchors.					
Dope and valve	0	Produ. Special	-F	RU floor and handling tools, pooh tapered rod string and stand rods in basket.					
BOPS	100	Cavaloz	-G	Ex-changed tools, and latched on 2-7/8" tubing. Rigged up BM vac truck					
VAC TRUCK	0	Tejas	-H	pump 80 bbl water down tubing string and workd tubing loose. Attempt					
WIRE Line	0	Rotary wl	-I	to circulate well, no circulation. Cont'd GIH with tubing, tagged junk & solids					
VAC TRUCK	0	Once Source	-J	at 11500'. Continued pumping water to gain circulation, no returns.					
2-7/8" TUBG	0	DRM	-K	pooh with 60 joints tubing to check fluid level, no fluid level.					
VAC TRUCK	350	BM VAC	-L	Closed wellbore in. SDFN.					
FORK LIFT	600	TUCKER	-M	Will continue drilling to TD of 12599'					
				Total vol of water lost in the hole: 1940 bbl.					

Basic well service	1050	28135	provide service rig
JRC	0	350	dug dirt pit
Hinton	1850	19950	provide fishing tools, Reverse unit
Hadi	400	4000	supervise operation & fishing
Andrew pump	0	0	Pump repair
Produ. Specialty	0	0	Pipe dope, valves, wood seals
Cavaloz	100	750	provide bop stack.
Tejas Vac Trucks	0	1120	huling water to rev pit.
Rotary wire line	0	2000	Stand by to cut pipe.
OneSource Vac	0	0	hauled water to rev.pit
DRM pipe co.	0	0	2-7/8" tubing
BM Vac trucks	350	1100	hauled water to rev.pit
Tucker forklift	600	600	Unloaded work string.

Daily Cost: \$4,350
C.Cost \$58,005

TRIPLE N WELL# MMM-1



Hadi 2/28/2012

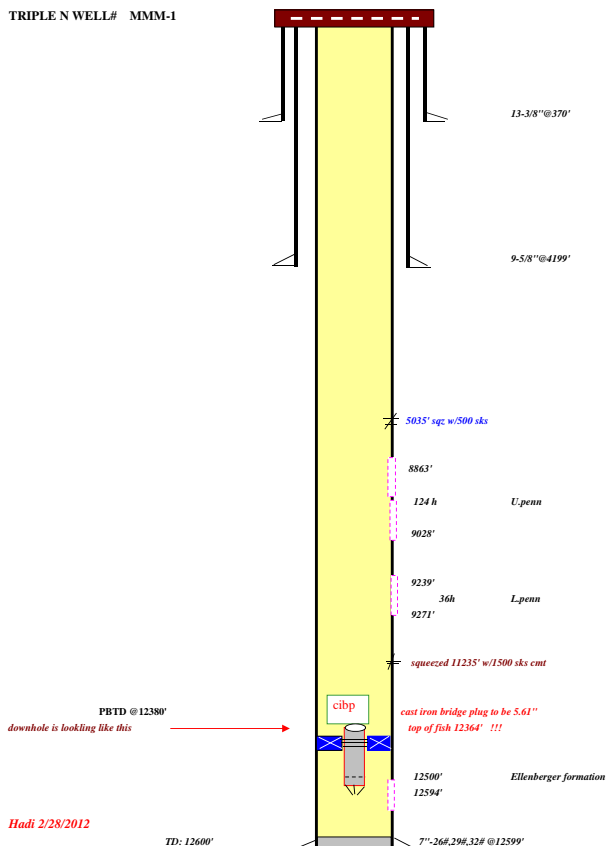
ok

DATE: 4/2/2012 Mond		DAILY WORKOVER / COMPLETION REPORT		ISO	
WELL NAME & NO. MMM#1			FIELD TRIPLE N		
API#042-003-01639		TWP	RGE	COUNTY ANDREWS	STATE TX
AFE NO. AFE NO..... Pending		W.I. 100%		GROSS AFE \$389,000	
JOB DESCRIPTION: Pull Production equipment, lay down rods and 2-3/8" tubing string Drill and clean up wellbore to Ellenberger formation 12599'. Swab test Ellenberger.			SUPPLEMENT 1		
			TOTAL GROSS AFE		
		SIZE	WT.	GRADE	DEPTH
C		13-3/8"	48#	IL-40	370'
S		9-5/8"	36# & 40#	K-55	4,199
G		7"	26#, 29# & 32#	N80, S95	12599'
T		2-3/8"	4.60#	L80	8RD
B					
G					
PERFS:					
		TD	PBTD	PERFS	BODY
COST ITEMS	Estimate \$	VENDOR	PKR/TAC	S.N. @	EOT @
RIG	2470	Basic	-A		
BACK HOE	0	JRC	-B		
REVERSE UNIT	2100	Hinton	-C		
SUPERVISOR	400	Hadi	-D		
PUMP REPAIR	0	Andrew Pump	-E		
Dope and valve	0	Produ. Special	-F		
BOPS	100	Cavaloz	-G		
VAC TRUCK	0	Tejas	-H		
WIRE Line	0	Rotary wl	-I		
VAC TRUCK	0	Once Source	-J		
2-7/8" TUBG	0	DRM	-K		
VAC TRUCK	0	BM.VAC	-L		
FORK LIFT	0	TUCKER	-M		
DAILY COST 5,070 AFE \$389000 ACCIDENTS: -0-					
PREVIOUS COST 84,275		REPORT BY: Hadi		PHONE: 361-649-7340	
TOTAL COST 89,345 \$89,345		RIG#1623 Basic			

Basic well service	2470	45245	provide service rig
JRC	0	350	dug dirt pit
Hinton	2100	30200	provide fishing tools, Reverse unit
Hadi	400	6000	supervise operation & fishing
Andrew pump	0	0	Pump repair
Prod. Specialty	0	0	Pipe dope, valves, wood seals
Cavaloz	100	1050	provide bop stack.
Tejas Vac Trucks	0	2050	huling water to rev pit.
Rotary wire line	0	2000	Stand by to cut pipe.
OneSource Vac	0	750	hauled water to rev pit
DRM pipe co.	0	0	2-7/8" tubing
BM.Vac trucks	0	1100	hauled water to rev pit
Tucker forklift	0	600	Unloaded work string.

Daily Cost: \$5,070
C.Cost \$89,345

TRIPLE N WELL# MMM-1



ok

Daily Cost:	\$9,000
C.Cost	\$98,345

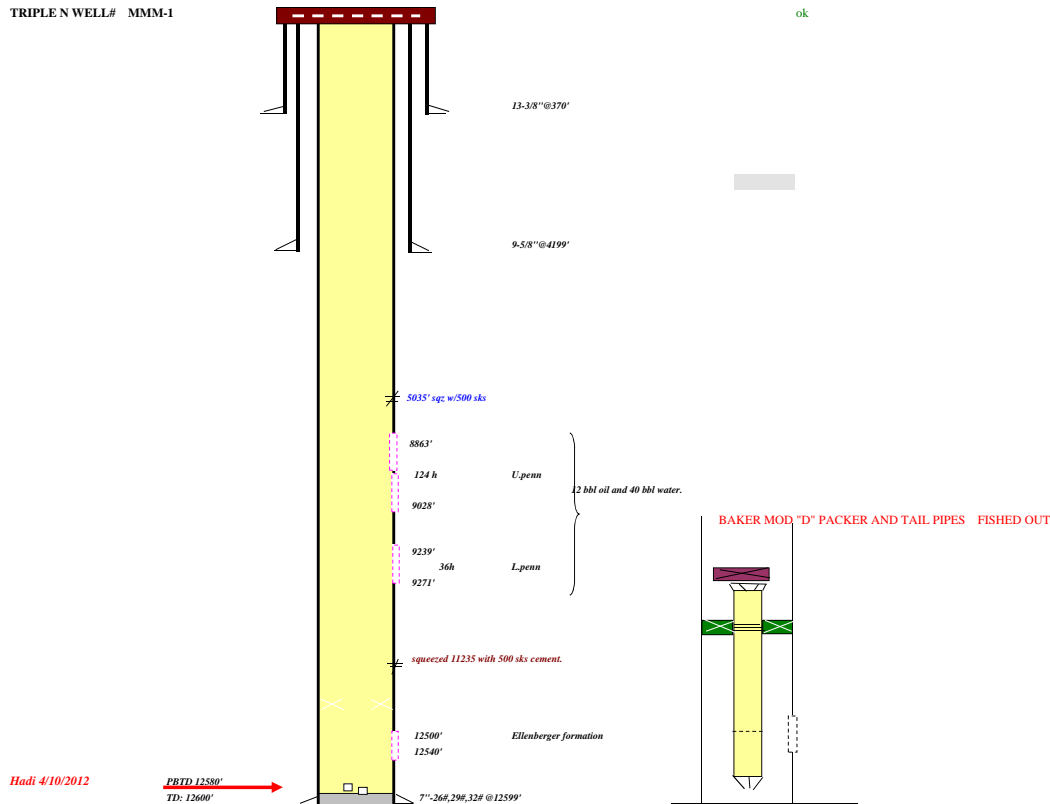
Hadi 2/28/2012

DATE: 4/20/2012		Frid		DAILY WORKOVER / COMPLETION REPORT			ISO		
WELL NAME & NO.						FIELD		TRIPLE N	
MMM#1									
API#42-003-01639						TWP		RGE	
						COUNTY		STATE	
						ANDREWS		TX	
AFE NO.						W.L. 100%		GROSS AFE	
AFE- N-15811-								\$389,000	
JOB DESCRIPTION:								SUPPLEMENT 1	
Pull Production equipment, lay down rods and 2-3/8" tubing string									
Drill and clean up wellbore to Ellenberger formation 12599'. Swab test Ellenberger.								TOTAL GROSS AFE	
C		S		G		SIZE		WT.	
						13-3/8"		48#	
						9-5/8"		36# & 40#	
						7"		26#, 29# & 32#	
						2-3/8"		4.60#	
T		B		G				GRADE	
								H-40	
								K-55	
								N80,S95	
								L80	
								DEPTH	
								370'	
								12599'	
								THREAD	
								ST&C	
								LT&C	
								LT&C	
								8RD	
PERFS:									
						TD		PBTD	
								PERFS	
								BODY	
								12500-12540'	
COST ITEMS						Estimate \$		VENDOR	
						3500		Basic	
RIG						0		JRC	
BACK HOE						0		Hinton	
REVERSE UNIT						400		Hadi	
SUPERVISOR						0		Andrew Pump	
PUMP REPAIR						0		Produ. Special	
Dope and valve						50		Cavaloz	
BOPS						0		Tejas	
VAC TRUCK						0		Rotary wl	
WIRE LINE						0		Once Source	
VAC TRUCK						0		DRM	
2-7/8" TUBG						0		BM.VAC	
VAC TRUCK						0		TUCKER	
FORK LIFT						0		Weatherford	
PACKER						0		BEAZA	
ROUSTABOUT									

Basic well service	3500	96845	provide service rig
JRC	0	350	dug dirt pit
Hinton	0	67300	provide fishing tools, Reverse unit, mills, shoes
Hadi	400	11600	supervise operation & fishing
Andrew pump	0	0	Pump repair
Prod. Specialty	0	0	Pipe dope, valves, wood seals
Cavaloz	50	1850	provide bop stack.
Tejas Vac Trucks	0	2050	huling water to rev.pit.
Rotary wire line	0	2000	Stand by to cut pipe.
OneSource Vac	0	3400	hauled water to rev.pit
DRM pipe co.	0	0	2-7/8" tubing
BM.Vac trucks	0	1100	hauled water to rev.pit
Tucker forklift	0	600	Unloaded work string.
Weatherford	0	0	provide isolation packer.
Beaza crew	0	0	hauled tubing, and work on pit.

Daily Cost: \$3,950
C.Cost \$187,095

TRIPLE N WELL# MMM-1



Daily Cost:	\$4,150
C.Cost	\$191,245

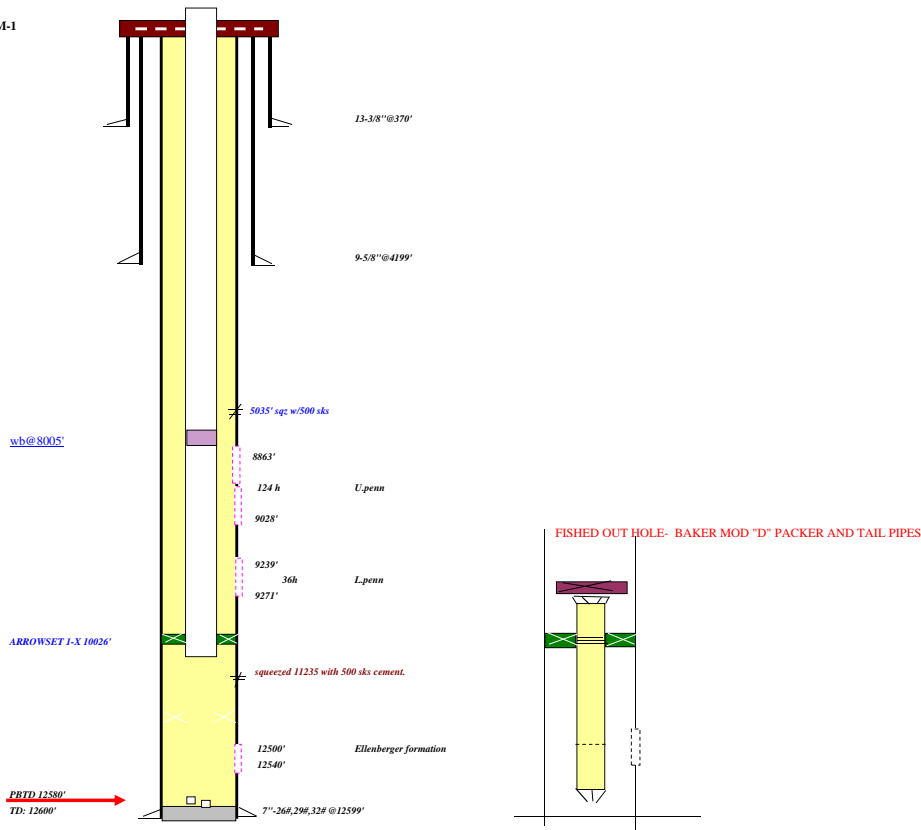
DATE: 6/01/2012 Friday			DAILY WORKOVER / COMPLETION REPORT			ISO					
WELL NAME & NO.					FIELD		TRIPLE N				
MMM#1											
API#42-003-01639			TWP		RGE		COUNTY ANDREWS		STATE TX		
AFE NO.			W.L. 100%			GROSS AFE					
AFE- N-16572-											
JOB DESCRIPTION:						SUPPLEMENT 1					
Pull Production equipment, lay down rods and 2-3/8" tubing string											
Drill and clean up wellbore to Ellenberger formation 12599'. Swab test Ellenberger.						TOTAL GROSS AFE					
		SIZE		WT.		GRADE		DEPTH		THREAD	
C	S	G	13-3/8"	48#		H-40		370'		ST&C	
			9-5/8"	36#&40#		K-55		4,199		LT&C	
			7"	26#,29#& 32#		N80,S95		12599'		LT&C	
T	B	G	2-7/8"	6.50#		L80				8RD	
					Ukraine pipe						
PERFS:											
						TD		PBTD		PERFS	
								12500-12540'		BODY	
COST ITEMS		Estimate \$		VENDOR		PKR/TAC		S.N. @		EOT @	
								WB		10026'	
										ON-OFF	
RIG		3200		J&M		-A		10026'		WB	
PUMP REPAIR		600		Andrews pump		-B		WORK PERFORMED			
SUPERVISOR		400		Americo		-C		Start Time:7:am Stop time: 1:30 pm			
1" RODS		0		Prod.specialty		-D					
ROUSTABOUT		0		BEAZA		-E		Ow, no pressure.			
Balance Wts.		0		Tim Snelson		-F		Checked polish rod had small bend on top. Pull and replaced plish rod			
								Re-spaced rods 30" off bottom, HWOB.			
								Put well on pump. Watched well pump for 3 hrs, making black iron sulfided			
								and solids. Continued watching well, until pumping clear water.			
								Tested pump action, Ok.			
								Rig down service rig and cleaned up location.			
								Rods Landing: 4' plunger			
								12 K-bars			
								84-3/4" rods			
								142-7/8" rods			
								79-1" EL rods			
								26' of 1-1/4" polished rod			
								No change in thg landing.			
								Keep well "On Hand to clean up" to avoid parted rods.			
								Final Report.			
								Ellenberger fluid level 3500'-4000'			
								PBTD 12581' perfs-12500-12540' TD drilled 12600'			
DAILY COST		4,200						ACCIDENTS: -0-			
PREVIOUS COST		9,545						REPORT BY: Hadi			
TOTAL COST		13,745		\$13,745		RIG J&M #104		PHONE: 361-649-7340			

A-
B-
C-
D-
E-
F-

J&M
Andrews pump
Americo
prod.specialty
Beaza crew
Tim Snelson

workover rig
chk plunger
supervision
rod box
hauled 1" rods from FK-7 to mmm-1
worked on pumping unit.

TRIPLE N WELL# MMM-1

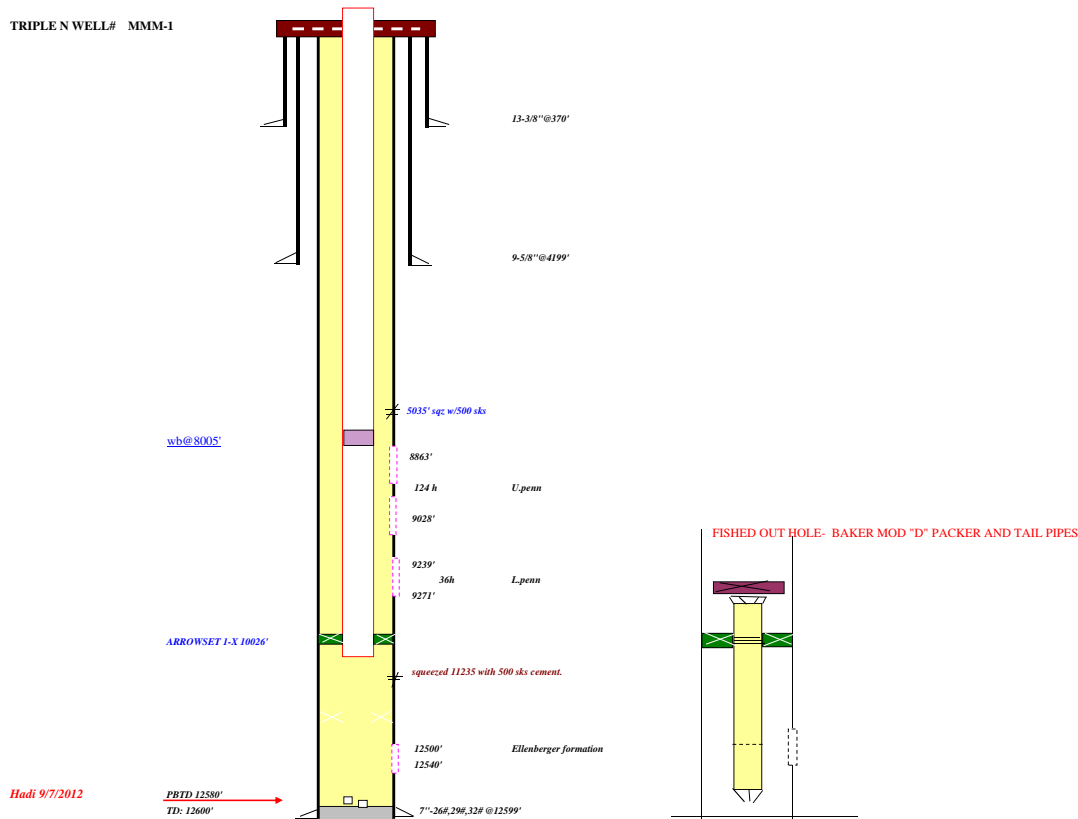


DATE: 9/10/2012		Mond		DAILY WORKOVER / COMPLETION REPORT			ISO		
WELL NAME & NO.						FIELD			
MMM#1						TRIPLE N			
API#42-003-01639		TWP		RGE		COUNTY		STATE	
						ANDREWS		TX	
AFE NO. Pending approval				W.L. %		GROSS AFE			
JOB DESCRIPTION: Fish parted rods,pull tubing and working barrel. Test 2-7/8" tubing, and trip back in hole with 2-7/8" tubing and packer. Set packer @2200' Below all the perfs. Acidize Ellenburger formation 12500-12540' and swab test well.						SUPPLEMENT 1			
						TOTAL GROSS AFE			
		SIZE		WT.		GRADE		DEPTH	
C	S	G	13-3/8"	48#		H-40		370'	
			9-5/8"	36#&40#		K-55		4,199'	
T	B	G	7"	26#,29#& 32#		N80,S95		12599'	
			2-7/8"	6.50#		L80		10200'	
						Ukraine pipe			
PERFS:						TD		PBTD	
						PERFS		BODY	
						12500-12540'			
COST ITEMS		Estimate \$		VENDOR		PKR/TAC		S.N. @	
		3900		Basic		-A		WB	
RIG		0		Andrews pump		-B		10026'	
PUMP REPAIR		1200		Americo		-C		WORK PERFORMED	
SUPERVISOR		0		Prod.specialty		-D		Start Time:7:am Stop time: 5:30 pm	
1" RODS		0		BEAZA		-E		Opened well, no pressure.	
ROUSTABOUT		0		JRC		-F		Made up new new tap on a pony rod and trip in hole on tapered rods	
BACKHOE		1800		Weatherford		-G		Tagged soft sticky material and standing valve in working barrel.	
Reverse Unit		0		ST		-H		picked up and rotate in several times. Picked up with 6000 lb over the	
BOP's		0		Weatherford		-I		rods weight, rods jumped free.	
Packer Serv		250		Tejas		-J		pooh and standing back sucker rods. Did not recover standing valve.	
Vac Truck								all starting threads on the tap was galled.	
								spot rig mats, and leveled off the ground to pull tubing string.	
								Rigged up reverse out. Tejas vac truck filled up reverse pit with 100 bbl wtr.	
								Closed wellbore in.	
								SDFN. Waiting on Orders.	
								plan: to release packer and pooh with tubing while waiting on orders.	

Daily cost	C.Cost	
A-Basic rig	3900	11400
B-Andrew pump	0	0
C-Americo	1200	3600
D-Prod Specialty	0	0
E-Beaza crew	0	0
F-JRC	0	400
G-Weatherford	1800	1800
H-ST Tucker	0	0
I-Weatherford	0	0
J-Tejas	250	250

Daily cost	\$7,150	
C. Cost	\$17,450	

TRIPLE N WELL# MMM-1

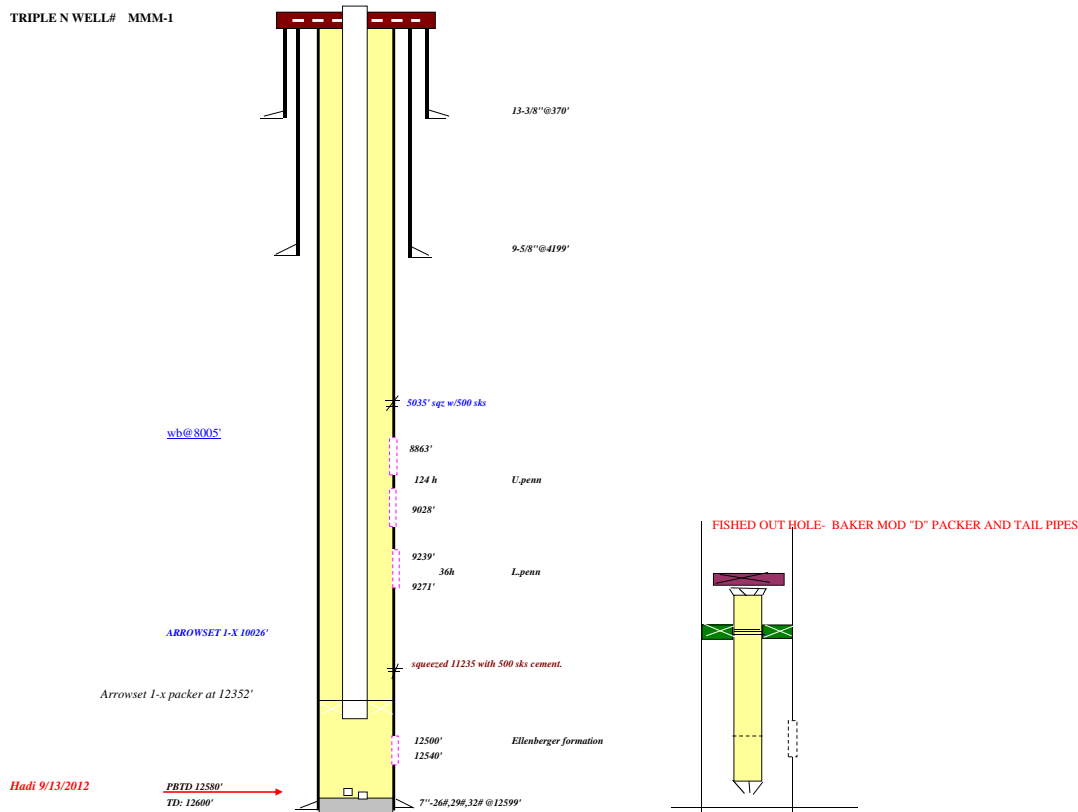


DATE: 9/13/2012 Th		DAILY WORKOVER / COMPLETION REPORT				ISO	
WELL NAME & NO.				FIELD		TRIPLE N	
MMM#1						COUNTY	STATE
API#42-003-01639				TWP	RGE	ANDREWS	TX
AFE NO. Pending approval				W.L. %		GROSS AFE	
JOB DESCRIPTION: Fish parted rods,pull tubing and working barrel. Test 2-7/8" tubing, and trip back in hole with 2-7/8" tubing and packer. Set packer at 2300' Below all the perfs. Acidize Ellenburger formation 12500-12540' and swab test well.						SUPPLEMENT 1	
						TOTAL GROSS AFE	
		SIZE	WT.	GRADE	DEPTH	THREAD	
C	S	13-3/8"	48#	H-40	370'	ST&C	
	G	9-5/8"	36#&40#	K-55	4,199	LT&C	
		7"	26# ,29#& 32#	N80,S95	12599'	LT&C	
T	B	2-7/8"	6.50#	L80	12352'	8RD	
	G			Ukraine pipe			
PERFS:				TD	PBTD	PERFS	BODY
						12500-12540'	
COST ITEMS	Estimate \$	VENDOR	PKR/TAC	S.N. @	EOT @		ON-OFF
RIG	3900	Basic	-A		12352'		
PUMP REPAIR	0	Andrews pump	-B				
SUPERVISOR	1200	Americo	-C				
1" RODS	0	Prod.specialty	-D				
ROUSTABOUT	0	BEAZA	-E				
BACKHOE	0	JRC	-F				
Reverse Unit	1800	Weatherford	-G				
BOPs	0	ST	-H				
Packer Serv	0	Weatherford	-I				
Vac Truck	0	Tejas	-J				
Vac Truck	0	BM.Vac	-K				
Tubing Tester	3216	Camball	-L				
				WORK PERFORMED			
				Start Time:7:am Stop time: 7:30 pm			
				Held safety meeting with rig crew, opened well SICP= 0#, SITP=0			
				Rigged up Camball testers, continued picking up 2-7/8" L80 tubing off the ground and test to 5000 pis (high,low test).			
				Finished going in hole with packer, and testing 398 joints of 2-7/8" L80 tubing to 12352' (slack off 82000 lb, pu 84000 lb)			
				re-spot 18 joints of bad tubing with corrosion pits,holes and bad threads.			
				Rig down tubing testers and moved off location.			
				Basic decided to replace drill line with broken wires.			
				Spot a clean frac tank on location for acid treatment.			
				Closed wellbore in. SDFN.			
				will set packer and prepare for acid group.			

	Daily cost	C.Cost	
A-Basic rig	3900	23100	workover rig
B-Andrew pump	0	0	pump repair
C-Americo	1200	7200	supervisor
D-Prod Specialty	0	0	pipe dop
E-Beaza crew	0	0	
F-JRC	0	400	dig dirt pit
G-Weatherford	1800	7200	reverse unit
H-ST,Tucker	0	0	bop's
I-Weatherford	0	0	packer repair service
J-Tejas	0	250	vac.truk, hauled wtr.
K-BM.Vac	0	300	
L-Camball tester	3216	3216	

Daily cost	\$10,116
C. Cost	\$41,666

TRIPLE N WELL# MMM-1

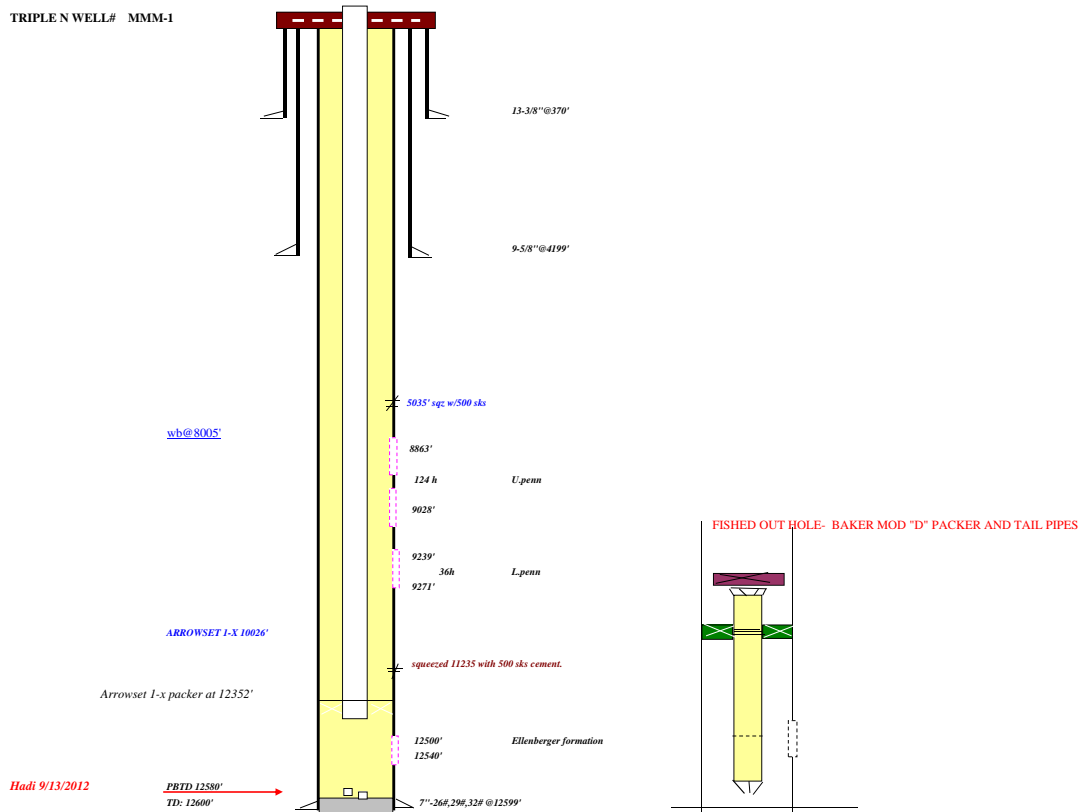


DATE: 9/14/2012 Friday		DAILY WORKOVER / COMPLETION REPORT				ISO	
WELL NAME & NO.				FIELD		TRIPLE N	
MMM#1						COUNTY	STATE
API#42-003-01639				TWP	RGE	ANDREWS	TX
AFE NO. Pending approval				W.L. %		GROSS AFE	
JOB DESCRIPTION: Fish parted rods,pull tubing and working barrel. Test 2-7/8" tubing, and trip back in hole with 2-7/8" tubing and packer. Set packer at2300' Below all the perfs. Acidize Ellenburger formation2500-12540' and swab test well.				SUPPLEMENT 1			
				TOTAL GROSS AFE			
C	S	G	SIZE	WT.	GRADE	DEPTH	THREAD
			13-3/8"	48#	H-40	370'	ST&C
			9-5/8"	36#& 40#	K-55	4,199'	LT&C
T	B	G	7"	26#,29#& 32#	N80,S95	12599'	LT&C
			2-7/8"	6.50#	L80	12352'	8RD
					Ukraine pipe		
PERFS:				TD	PBTD	PERFS	BODY
						12500-12540'	
COST ITEMS		Estimate \$	VENDOR	PKR/TAC	S.N. @	EOT @	ON-OFF
RIG		3400	Basic	-A		12352'	
PUMP REPAIR		0	Andrews pump	-B			
SUPERVISOR		400	Americo	-C			
1" RODS		0	Prod.specialty	-D			
ROUSTABOUT		0	BEAZA	-E			
BACKHOE		400	JRC	-F			
Reverse Unit		1800	Weatherford	-G			
BOP's		300	ST	-H			
Packer Serv		2300	Weatherford	-I			
Vac Truck		0	Tejas	-J			
Vac Truck		0	BM.Vac	-K			
Tubing Tester		0	Camball	-L			
				WORK PERFORMED			
				Start Time:7:am Stop time: 3:30 pm			
				Held safety meeting with rig crew, opened well SICP= 0#, SITP=0			
				Spaced out to rig floor, and Set Arrowset 1-X packer at 12352 ft. pulled			
				18k and slacked off with 18000 comp. Set on slips.			
				Ready for acid treatment and Bio chem application.			
				Bio chemical group, took water sample from the frac tank on location.			
				Waiting on BJS to have equipment available to do the Acid work.			
				shut down operation, and release the rig crew.			
				will resume operation on Monday			

	Daily cost	C.Cost	
A-Basic rig	3400	26500	workover rig
B-Andrew pump	0	0	pump repair
C-Americo	400	7600	supervisor
D-Prod Specialty	0	0	pipe dop
E-Beaza crew	0	0	
F-JRC	400	800	dig dirt pit
G-Weatherford	1800	9000	reverse unit
H-ST,Tucker	300	300	bop's
I-Weatherford	2300	2300	packer repair service
J-Tejas	0	250	vac.truk, hauled wtr.
K-BM.Vac	0	300	
L-Camball tester	0	3216	

Daily cost	\$8,600	
C. Cost		\$50,266

TRIPLE N WELL# MMM-1

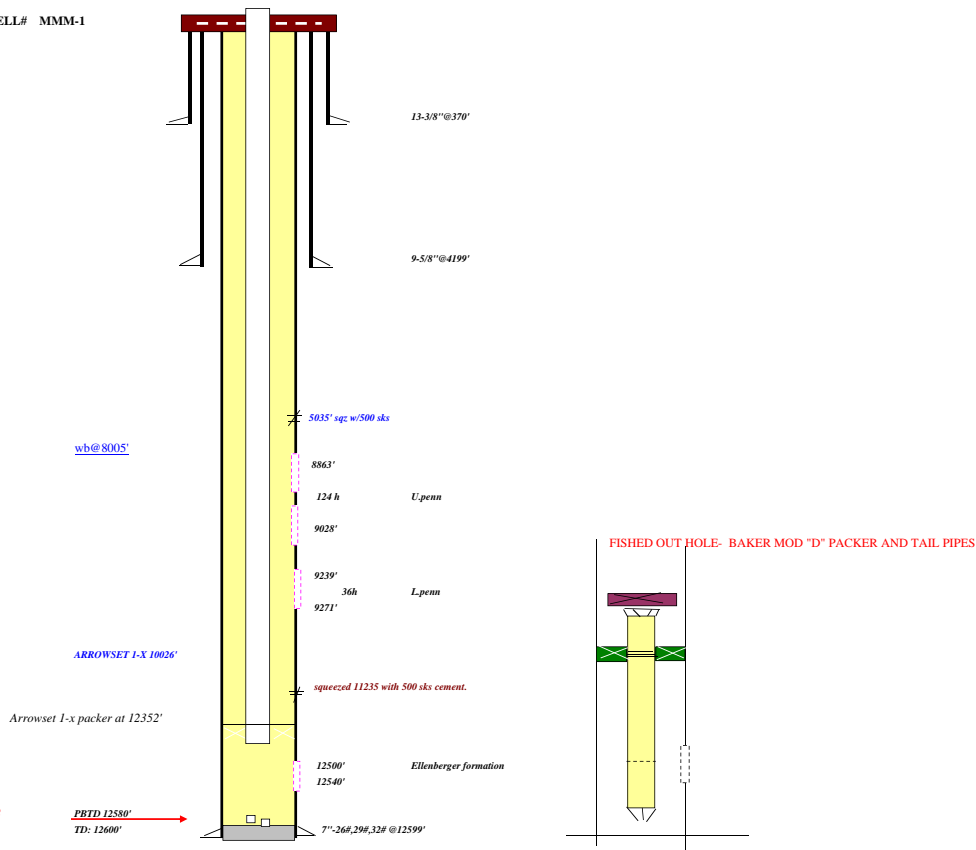


DATE: 9/17/2012 Monday		DAILY WORKOVER / COMPLETION REPORT				ISO	
WELL NAME & NO.				FIELD		TRIPLE N	
MMM#1							
API#042-003-01639		TWP		RGE		COUNTY	STATE
						ANDREWS	TX
AFE NO. Pending approval		W.L. %		GROSS AFE			
JOB DESCRIPTION: Fish parted rods,pull tubing and working barrel. Test 2-7/8" tubing, and trip back in hole with 2-7/8" tubing and packer. Set packer at 12300' Below all the perfs. Acidize Ellenburger formation 12500-12540' and swab test well.				SUPPLEMENT 1			
				TOTAL GROSS AFE			
		SIZE	WT.	GRADE	DEPTH	THREAD	
C	S	13-3/8"	48#	H-40	370'	ST&C	
		9-5/8"	36#&40#	K-55	4,199'	1.T&C	
		7"	26#,29#& 32#	N80,S95	12599'	1.T&C	
T	B	2-7/8"	6,50#	L80	12352'	8RD	
				Ukraine pipe			
PERFS:							
			TD	PBTD	PERFS	BODY	
					12500-12540'		
					12352'		
COST ITEMS		Estimate \$	VENDOR	PKR/TAC	S.N. @	EOT @	ON-OFF
RIG		2320	Basic	-A		12352'	
PUMP REPAIR		0	Andrews pump	-B			
SUPERVISOR		400	Americo	-C			
U' RODS		0	Prod.specialty	-D			
ROUSTABOUT		0	BEAZA	-E			
BACKHOE		0	JRC	-F			
Reverse Unit		1800	Weatherford	-G			
BOP's		50	ST	-H			
Packer Serv		0	Weatherford	-I			
Vac.Truck		0	Tejas	-J			
Vac.Truck		0	BM.Vac	-K			
Tubing Tester		0	Camball	-L			
Rig mats		160	Martin	-M			

Daily cost	C.Cost	
2320	28820	workover rig
0	0	pump repair
400	8000	supervisor
0	0	pipe dop
0	0	
0	0	
0	800	dig dirt pit
1800	10800	reverse unit
50	350	bop's
0	2300	packer repair service
0	250	vac.truk, hauled wtr.
0	300	vac.truk, hauled wtr.
0	3216	
160	160	provide rig mat

Daily cost	\$4,730
C. Cost	\$54,996

TRIPLE N WELL# MMM-1



	Daily cost	C.Cost	
A-Basic rig	2320	31140	workover rig
B-Andrew pump	0	0	pump repair
C-Americo	400	8400	supervisor
D-Prod Specialty	0	0	pipe dop
E-Beaza crew	0	0	
F-JRC	0	800	dig dirt pit
G-Weatherford	1800	12600	reverse unit
H-ST,Tucker	50	400	bop's
I-Weatherford	0	2300	packer repair service
J-Tejas	0	250	vac.truk, hauled wtr.
K-BM,Vac	0	300	vac.truk, hauled wtr.
L-Camball tester	0	3216	
M-Martin	20	180	provide rig mat
Daily cost	\$4,590		
C. Cost		\$59,586	

ELL# MMM-1

13-3/8" @ 370'

9-5/8" @ 4199'

5035' sgc w/500 sks

8863'

124 h U.penn

9028'

9239' 36h L.penn

9271'

squeezed 11235 with 500 sks cement.

12500' Ellenberger formation

12540'

ARROWSET 1-X 10026'

Arrowset 1-x packer at 12352'

PBD 12580'

TD: 12600'

7"-260,290,320 @ 12599'

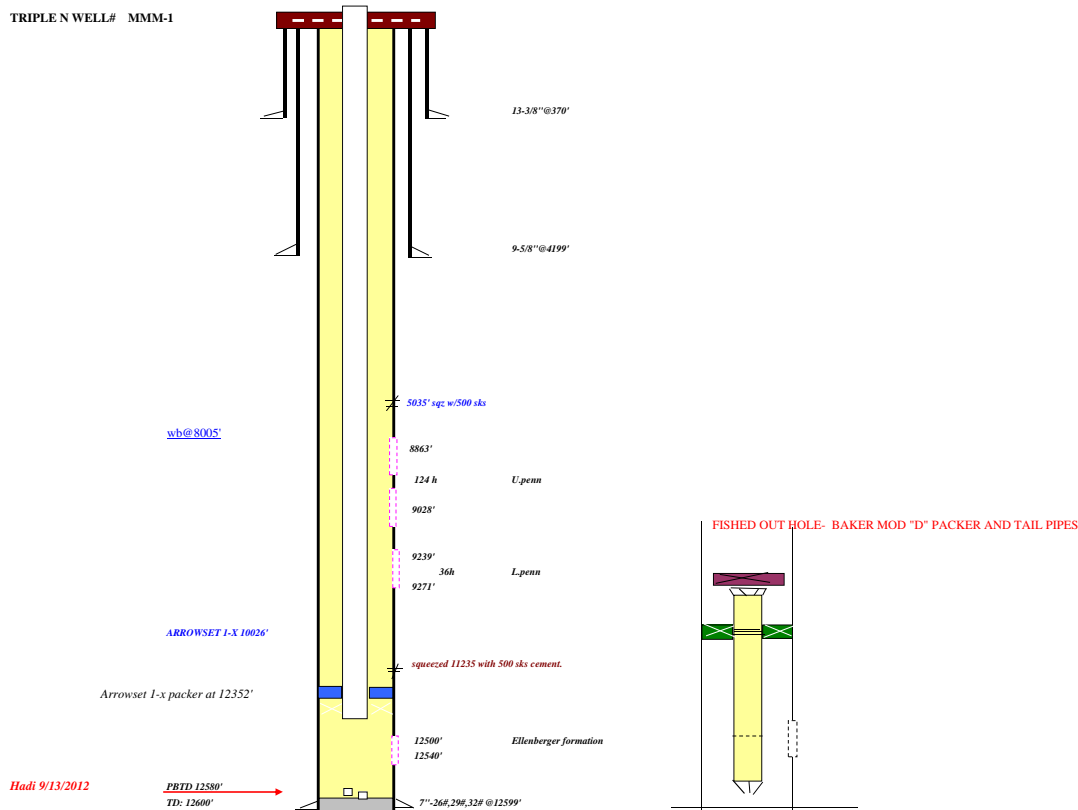
FISHED OUT HOLE- BAKER MOD "D" PACKER AND TAIL PIPES

DATE: 9/19/2012 wed			DAILY WORKOVER / COMPLETION REPORT			ISO						
WELL NAME & NO.					FIELD		TRIPLE N					
MMM#1												
API#042-003-01639			TWP		RGE		COUNTY	STATE				
							ANDREWS	TX				
AFE NO. Pending approval			W.L. %			GROSS AFE						
JOB DESCRIPTION: Fish parted rods,pull tubing and working barrel. Test 2-7/8" tubing, and trip back in hole with 2-7/8" tubing and packer. Set packer @2300' Below all the perfs. Acidize Ellenburger formation 12500-12540' and swab test well.						SUPPLEMENT 1						
						TOTAL GROSS AFE						
C		S	SIZE		WT.		GRADE		DEPTH		THREAD	
			13-3/8"		48#		H-40		370'		ST&C	
			9-5/8"		36#& 40#		K-55		4,199'		LT&C	
		G	7"		26#,29#& 32#		N80,S95		12599'		LT&C	
T		B	2-7/8"		6.50#		L80		12352'		8RD	
							Ukraine pipe					
		G										
PERFS:												
					TD		PBTD		PERFS		BODY	
									12500-12540'			
COST ITEMS		Estimate \$	VENDOR		PKR/TAC		S.N. @		EOT @		ON-OFF	
RIG		2320	Basic		-A				12352'			
PUMP REPAIR		0	Andrews pump		-B		WORK PERFORMED					
SUPERVISOR		400	Americo		-C		Start Time: 7am Stop time: 3:30 pm					
1" RODS		0	Prod.specialty		-D		Held safety meeting with rig crew, opened well SICP= 0#, SITP=0					
ROUSTABOUT		0	BEAZA		-E							
BACKHOE		0	JRC		-F							
Reverse Unit		1800	Weatherford		-G		No Progress. Waiting on BJ Services to do acid job.					
BOP's		50	ST		-H		STAND BY WAITING ON BJ SERVICES.					
Packer Serv		0	Weatherford		-I		PLAN TO DO ACID TREATMENT ON THURSDAY.					
Vac Truck		0	Tejas		-J							
Vac Truck		0	BM.Vac		-K		Cleaned up 2-3/8" production tubing and applied pipe dope to pin & collars.					
Tubing Tester		0	Camball		-L							
Rig mats		20	Martin		-M							

Daily cost	C.Cost	
A-Basic rig	2320	33460
B-Andrew pump	0	0
C-Americo	400	8800
D-Prod Specialty	0	0
E-Beaza crew	0	0
F-JRC	0	800
G-Weatherford	1800	14400
H-ST,Tucker	50	450
I-Weatherford	0	2300
J-Tejas	0	250
K-BM.Vac	0	300
L-Camball tester	0	3216
M-Martin	20	200

Daily cost	\$4,590	
C. Cost	\$64,176	

TRIPLE N WELL# MMM-1

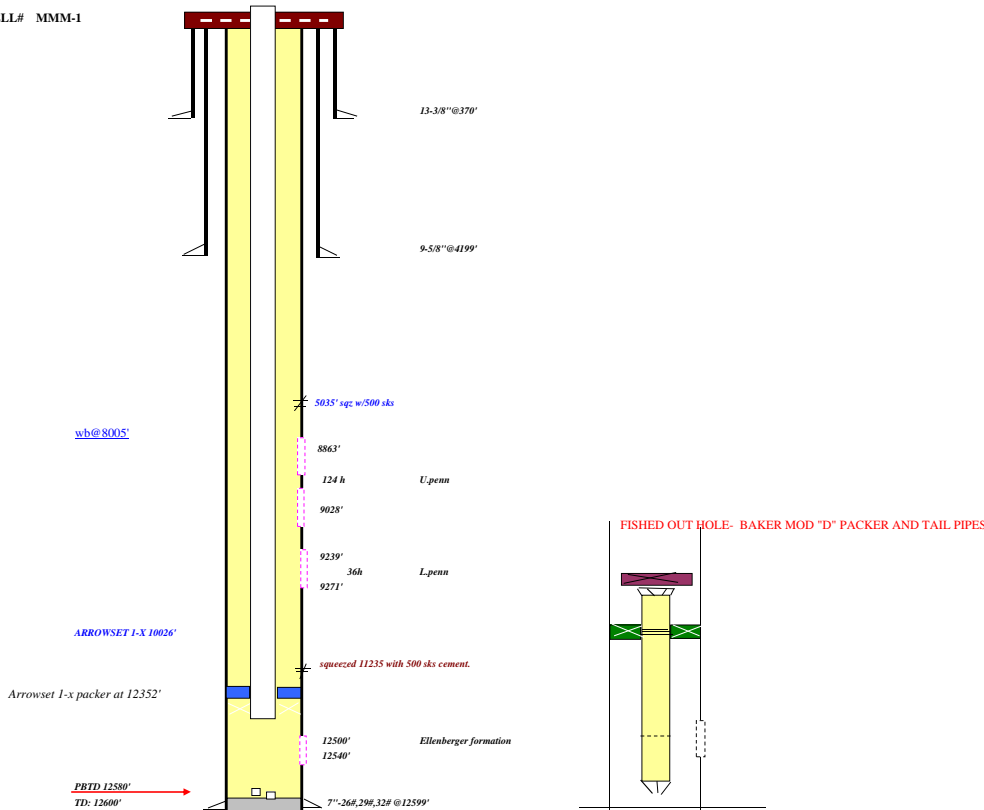


DATE: 9/20/2012 Th		DAILY WORKOVER / COMPLETION REPORT				ISO	
WELL NAME & NO.				FIELD		TRIPLE N	
MMM#1							
API#42-003-01639		TWP		RGE		COUNTY	STATE
						ANDREWS	TX
AFE NO. Pending approval				W.L. %		GROSS AFE	
						SUPPLEMENT 1	
JOB DESCRIPTION: Fish parted rods,pull tubing and working barrel. Test 2-7/8" tubing, and trip back in hole with 2-7/8" tubing and packer. Set packer @2300' Below all the perfs. Acidize Ellenburger formation 12500-12540' and swab test well.						TOTAL GROSS AFE	
		SIZE		WT.		GRADE	
C		13-3/8"		48#		H-40	
S		9-5/8"		36# & 40#		K-55	
G		7"		26# ,29# & 32#		N80,S95	
T		2-7/8"		6.50#		L80	
B				Ukraine pipe			
G							
PERFS:				TD		PBTD	
						PERFS	
						12500-12540'	
COST ITEMS		Estimate \$		VENDOR		PKR/TAC	
RIG		2320		Basic		S.N. @	
PUMP REPAIR		0		Andrews pump		EOT @	
SUPERVISOR		600		Americo		12352'	
1" RODS		0		Prod.specialty		ON-OFF	
ROUSTABOUT		0		BEAZA			
BACKHOE		0		JRC			
Reverse Unit		1800		Weatherford			
BOP's		50		ST			
Packer Serv		0		Weatherford			
Vac Truck		0		Tejas			
Vac Truck		0		BM.Vac			
Tubing Tester		0		Camball			
Rig mats		40		Martin			
Acid treatment		9077		BJS			
Micro chem		2449		Southwest Micro			
FRESH WTR.		0		One-Source			
				WORK PERFORMED			
				Start Time: 7:am Stop time: 3:00 pm			
				Run by equip, and held safety meeting with crew. Tested lines 5600 psi.			
				displaced 78 bbl of treated wtr at 3.1 bbl/mt 37 psig. Start with acid:			
				12 bbl hcl 3.1 bbl/mt 140 psi			
				24 bbl spacer with 53 ball sealers 5.2 bbl/mt 71 psi			
				12 bbl hcl 5.1 bbl/mt 72 psi			
				24 bbl spacer with 53 ball sealers at 5.2 bbl/mt 142 psig.			
				12 bbl hcl acid at 5.2 bbl/mt 15 psig pressure			
				24 bbl of spacer with 53 ball sealers at 5.2 bbl/mt 15 psig pressure			
				balls at perforations good ball action with 366#/2012#, and 2400#			
				5000 gal flush spacer			
				casing pressure 0 psig through out acid treatment.			
				displaced chemical to perforations and shut down. ISDP= 0 psig			
				Rigged up Southwest Micobil - pumped 3bbl of Nutriens w/ 6 gal of Microbes			
				Rigged up BJS and displaced Micro chem to perforations w/75.8 bbl			
				closed wellbore in. Shut down for night.			
				It is recommended by Southwest Micobil to wait on chemical for 3 days.!!!			

Daily cost	C.Cost	
A-Basic rig	2320	35780
B-Andrew pump	0	0
C-Americo	600	9400
D-Prod Specialty	0	0
E-Beaza crew	0	0
F-JRC	0	800
G-Weatherford	1800	16200
H-ST,Tucker	50	500
I-Weatherford	0	2300
J-Tejas	0	250
K-BM.Vac	0	300
L-Camball tester	0	3216
M-Martin	40	240
N-BJS	9077	9077
O-Swathwest Microb	2449	2449
P-One Source Vac	0	0

Daily cost \$4,590
C. Cost \$80,512

TRIPLE N WELL# MMM-1

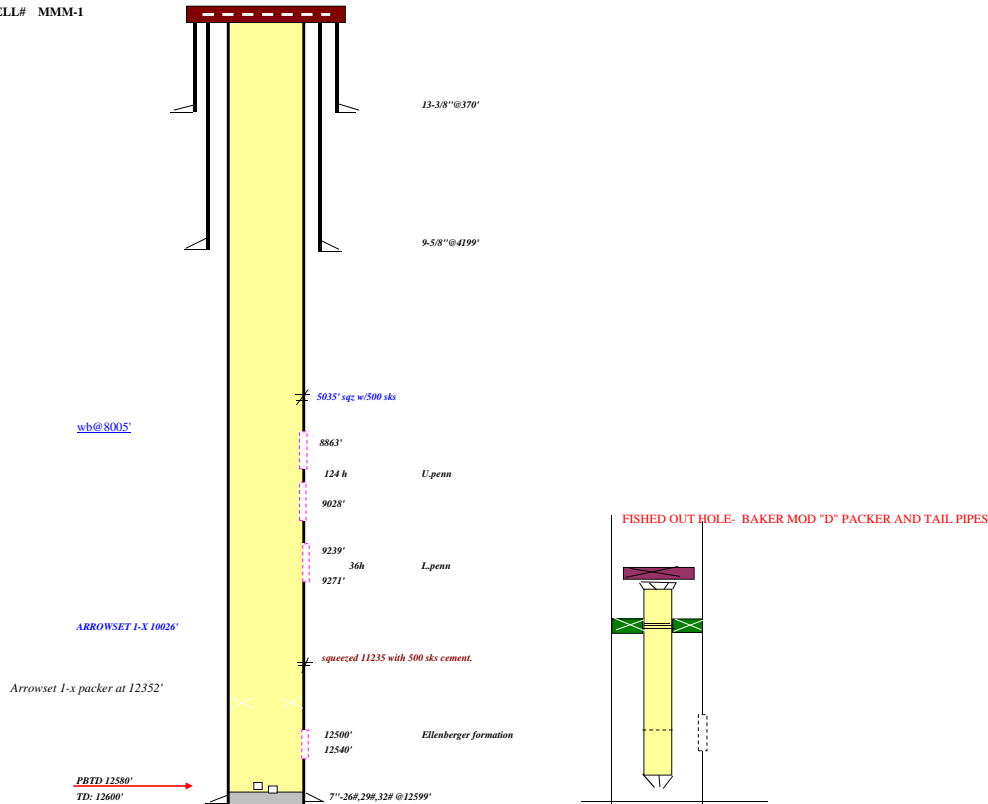


DATE: 9/21/2012 Frid				DAILY WORKOVER / COMPLETION REPORT				ISO	
WELL NAME & NO.						FIELD		TRIPLE N	
MMM#1						TWP		RGE	
API#42-003-01639						COUNTY		STATE	
						ANDREWS		TX	
AFE NO. Pending approval						W.L. %		GROSS AFE	
JOB DESCRIPTION: Fish parted rods,pull tubing and working barrel. Test 2-7/8" tubing, and trip back in hole with 2-7/8" tubing and packer. Set packer at 2300' Below all the perfs. Acidize Ellenburger formation 12500-12540' and swab test well.						SUPPLEMENT 1			
						TOTAL GROSS AFE			
		SIZE		WT.		GRADE		DEPTH	
C		13-3/8"		48#		H-40		370'	
S		9-5/8"		36# & 40#		K-55		4,199	
G		7"		26# , 29# & 32#		N80,S95		12599'	
T		2-7/8"		6.50#		L80		12352'	
B						Ukraine pipe			
G									
PERFS:						TD		PBTD	
								PERFS	
								12500-12540'	
COST ITEMS						Estimate \$		VENDOR	
RIG						3600		Basic	
PUMP REPAIR						0		Andrews pump	
SUPERVISOR						600		Americo	
1" RODS						0		Prod.specialty	
ROUSTABOUT						0		BEAZA	
BACKHOE						0		JRC	
Reverse Unit						0		Weatherford	
BOPs						50		ST	
Packer Serv						0		Weatherford	
Vac Truck						0		Tejas	
Vac Truck						0		BM.Vac	
Tubing Tester						0		Camball	
Rig mats						40		Martin	
Acid treatment						0		BJS	
Micro chem						0		Southwest Micro	
FRESH WTR.						0		One-Source	
								PKR/TAC	
								S.N. @	
								EOT @	
								12352'	
								ON-OFF	

Daily cost	C.Cost	
A-Basic rig	3600	39380
B-Andrew pump	0	0
C-Americo	600	10000
D-Prod Specialty	0	0
E-Beaza crew	0	0
F-JRC	0	800
G-Weatherford	0	16200
H-ST,Tucker	50	550
I-Weatherford	0	2300
J-Tejas	0	250
K-BM.Vac	0	300
L-Camball tester	0	3216
M-Martin	40	280
N-BJS	0	9077
O-Swouthwest Microb	0	2449
P-One Source Vac	0	0
workover rig		
pump repair		
supervisor		
pipe dop		
dig dirt pit		
reverse unit		
bop's		
packer repair service		
vac.truk, hauled wtr.		
vac.truk, hauled wtr.		
provide rig mat		
acid treatment		
Micro treatment		
Hauled water.		

Daily cost \$4,290
C. Cost \$84,802

TRIPLE N WELL# MMM-1

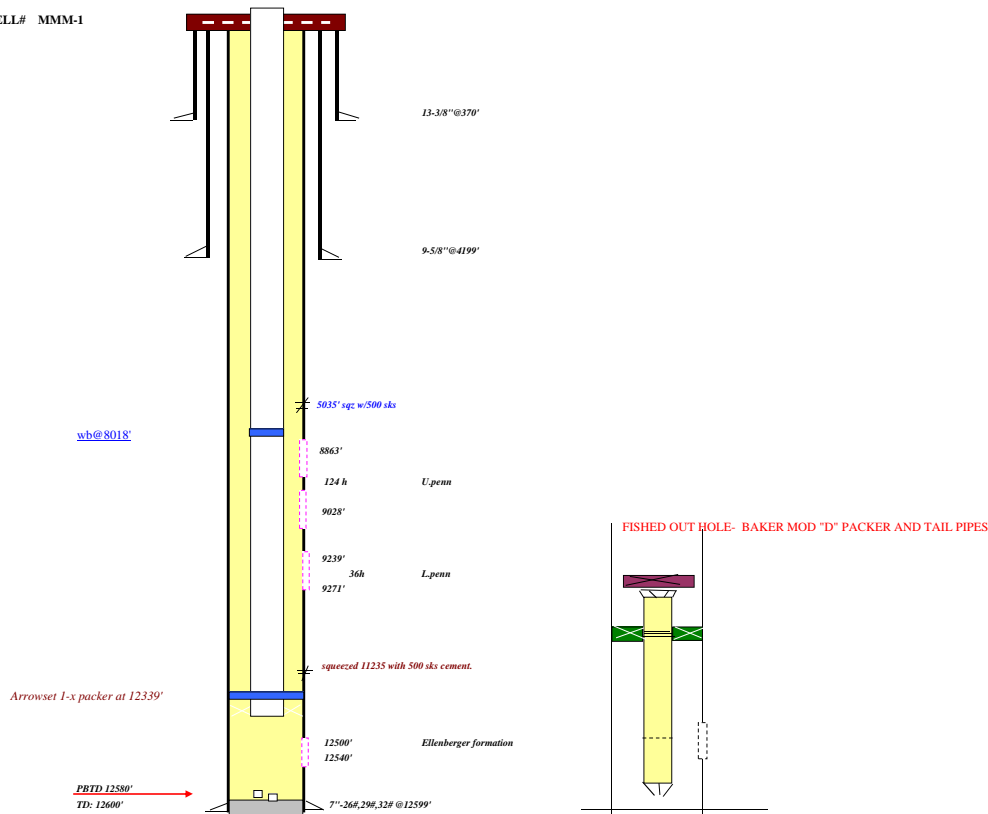


DATE: 9/25/2012 TU		DAILY WORKOVER / COMPLETION REPORT			ISO	
WELL NAME & NO.				FIELD		
MMM#1				TRIPLE N		
API#042-003-01639		TWP	RGE	COUNTY	STATE	
				ANDREWS	TX	
AFE# N-1743S.....		W.L. %		GROSS AFE		
JOB DESCRIPTION: Fish parted rods,pull tubing and working barrel. Test 2-7/8" tubing, and trip back in hole with 2-7/8" tubing and packer. Set packer @2300' Below all the perfs. Acidize Ellenburger formation 12500-12540' and swab test well.				SUPPLEMENT 1		
				TOTAL GROSS AFE		
C	S	SIZE	WT.	GRADE	DEPTH	
		13-3/8"	48#	H-40	370'	
		9-5/8"	36#&40#	K-55	4,199	
	G	7"	26#&29#&32#	N80,S95	12599'	
T	B	2-7/8"	6.50#	L80	12332'	
				Ukraine pipe	257 jts	
	G				wt- 82000	
PERFS:						
		TD	PBTD	PERFS	BODY	
				12500-12540'		
COST ITEMS	Estimate \$	VENDOR	PKR/TAC	S.N. @	EOT @	
RIG	3800	Basic	-A	12339'	wb-8018'	
PUMP REPAIR	0	Andrews pump	-B			
SUPERVISOR	600	Americo	-C			
1" RODS	0	Prod.specialty	-D			
ROUSTABOUT	0	BEAZA	-E			
BACKHOE	0	JRC	-F			
Reverse Unit	0	Weatherford	-G			
BOP's	50	ST	-H			
Packer Serv	0	Weatherford	-I			
Vac Truck	0	Tejas	-J			
Vac Truck	0	BM.Vac	-K			
Tubing Tester	0	Camball	-L			
Rig mats	40	Martin	-M			
Acid treatment	0	BJS	-N			
Micro chem	0	Southwest Micro	-O			
FRESH WTR.	0	One-Source	-P			
WORK PERFORMED						
Start Time: 7:am Stop time: 6:00 pm						
Had safety meeting. Prepared to run prod tubing in hole.						
Opened well sitp=0, sicp=0						
Finished going in hole with 7" 10k Arrowset 1-x packer assy on 140 jts						
2-7/8" tubing, 2-1/2"x2-1/4"x22' working barrel and 257 jts of tubing to surface (397 jts in hole). Pu and set Isolation packer at 12335' with 12000 lb tension on packer. (btg wt 82000 lb, with tension 94000 lb)						
N/down, and N/up.						
Trip in hole with rod plunger on 12 k.bars, 84-3/4" ,137-7/8" rods.						
closed wellbore in.						
will continue with 1" rods tomorrow.						
SDFN						
PBTD 12581' perfs-12500-12540'				TD drilled 12600'		
				ACCIDENTS: -0-		
DAILY COST	4,490					
PREVIOUS COST	89,342	REPORT BY: Hadi				
TOTAL COST	93,832	PHONE: 361-649-7340				
	993,832	RIG Basic 1725				

Daily cost	C.Cost	
3800	46980	workover rig
0	0	pump repair
600	11200	supervisor
0	0	pipe dop
0	0	
0	0	dig dirt pit
0	800	reverse unit
0	16200	bop's
50	700	packer repair service
0	2300	vac.truk, hauled wtr.
0	250	vac.truk, hauled wtr.
0	300	
0	3216	
40	360	provide rig mat
0	9077	acid treatment
0	2449	Micro treatment
0	0	Hauled water.

Daily cost \$4,490
C. Cost \$93,832

TRIPLE N WELL# MMM-1



[illegible]

13-3/8" @ 370'

9-5/8" @ 4199'

5035' sgc w/500 sks

8863'

124 h U.penn

9028'

9239' 36h L.penn

9271'

squeezed 11235 with 500 sks cement.

12500' Ellenberger formation

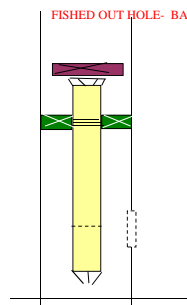
12540'

7"-260,290,320 @ 12599'

Hadi 10/10/2012

PBTD 12580'
TD: 12600'

FISHED OUT HOLE- BAKER MOD "D" PACKER AND TAIL PIPES



		daily	total	
A-	J&M	\$3,600	\$5,400	workover rig
B-	Andrews pump	0	\$0	pump repair
C-	Americo	\$1,200	\$2,400	supervisor
D-	prod specialty	0	0	provide dope & Misc items
E-	Beaza	0	0	Roustabout gang
F-	JRC	300	300	dig dirt pit
G-	weatherford	1800	1800	Reverse unit
H-	St.Tucker	400	400	provide BOP
I-	Peak packers	0	0	Rent packers
J-	BM vac	300	300	hauled water
K-	One source	0	0	hauled water
L-	NN	0	0	
M-	Martin	40	40	provide rig mats
N-	Roywell	0	0	acid
O-	Dialog	0	0	provide BP, cement logging
Daily cost:		\$7,640		
Total cost:			\$10,640	

13-3/8" @ 370'

9-5/8" @ 4199'

5035' sgc w/500 sks

8863'

124 h

9028'

9239'

36h

9271'

squeezed 11235 with 500 sks cement.

12500'

12540'

Ellenberger formation

7" -260,290,320' @ 12599'

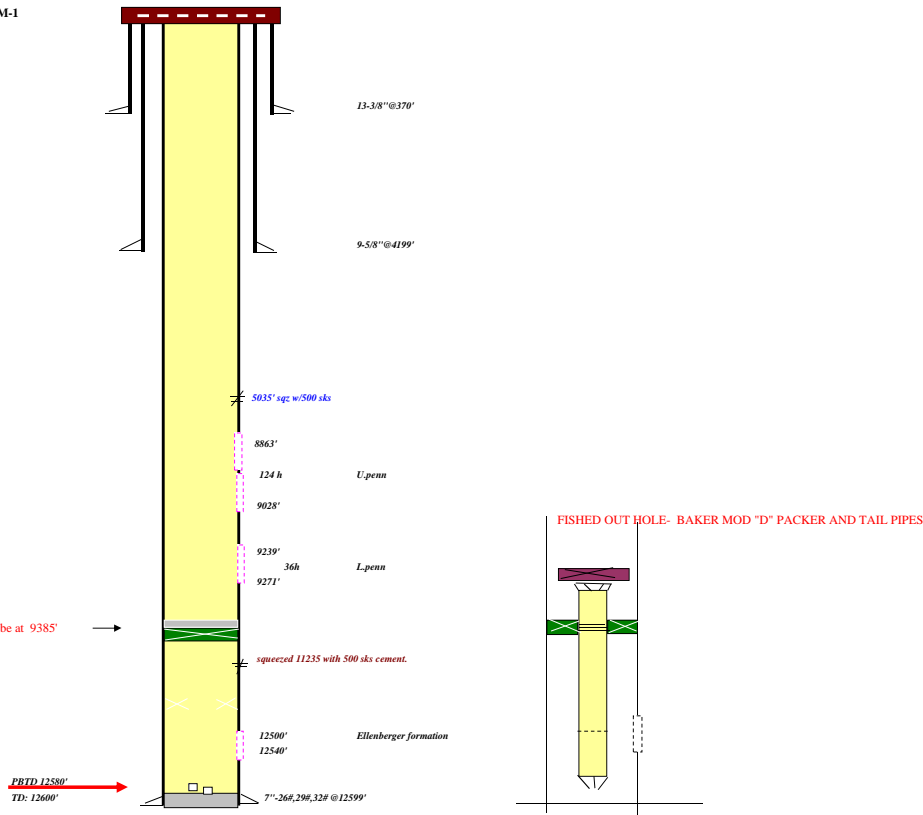
Hadi 10/10/2012

PBTD 12580'
TD: 12600'

FISHED OUT HOLE- BAKER MOD "D" PACKER AND TAIL PIPES

		daily	total	
A-	J&M	\$3,400	\$8,800	workover rig
B-	Andrews pump	0	\$0	pump repair
C-	Americo	\$1,200	\$3,600	supervisor
D-	prod specialty	0	0	provide dope & Misc items
E-	Beaza	0	0	Roustabout gang
F-	JRC	0	300	dig dirt pit
G-	weatherford	1800	3600	Reverse unit
H-	St.Tucker	0	400	provide BOP
I-	Peak packers	0	0	Rent packers
J-	BM vac	300	600	hauled water
K-	One source	0	0	hauled water
L-	NN	0	0	
M-	Martin	40	80	provide rig mats
N-	Roywell	0	0	acid
O-	Dialog	6600	6600	provide BP, cement logging
Daily cost:		\$13,340		
Total cost:			\$23,980	

Hadi 10/10/2012



		daily	total	
A-	J&M	\$3,200	\$12,000	workover rig
B-	Andrews pump	0	\$0	pump repair
C-	Americo	\$1,200	\$4,800	supervisor
D-	prod specialty	0	0	provide dope & Misc items
E-	Beaza	0	0	Roustabout gang
F-	JRC	0	300	dig dirt pit
G-	weatherford	1800	5400	Reverse unit
H-	St.Tucker	50	450	provide BOP
I-	Peak packers	0	0	Rent packers
J-	BM vac	400	1000	hauled water
K-	One source	0	0	hauled water
L-	NN	0	0	
M-	Martin	80	160	provide rig mats
N-	Roywell	0	0	acid
O-	Dialog	0	6600	provide BP, cement logging
Daily cost:		\$6,730		
Total cost:		\$30,710		

TRIPLE N WELL# MMM-1

The diagram illustrates the wellbore completion details for Triple N Well # MMM-1. The main vertical section shows the following components from top to bottom:

- Casing:** 13-3/8" @ 370' and 9-5/8" @ 4199'.
- Packer:** Located at 8665' TD, labeled "packer@8665'" in blue.
- Bridge Plug:** A cast iron bridge plug located at 9385' TD, indicated by a red arrow and label.
- Formations and Intervals:**
 - U.penn interval from 8863' to 9028' TD.
 - L.penn interval from 9239' to 9271' TD.
 - A 36h interval between 9028' and 9239' TD.
 - Ellenberger formation below 12500' TD.
- Well Bottom:** 7"-26#, 29#, 32# @ 12599' TD.
- Completion Details:**
 - Squeezed 11235 with 500 sks cement.
 - PBTD 12580' (Production Bottom Hole Depth) indicated by a red arrow.
 - TD: 12600' (Total Depth).

An inset diagram on the right shows a cross-section of the wellbore, highlighting the "FISHED OUT HOLE- BAKER MOD 'D' PACKER AND TAIL PIPES".

		daily	total	
A-	J&M	\$3,200	\$15,200	workover rig
B-	Andrews pump	0	\$0	pump repair
C-	Americo	\$1,200	\$6,000	supervisor
D-	prod specialty	0	0	provide dope & Misc items
E-	Beaza	0	0	Roustabout gang
F-	JRC	0	300	dig dirt pit
G-	weatherford	1800	7200	Reverse unit
H-	St.Tucker	50	500	provide BOP
I-	Peak packers	0	0	Rent packers
J-	BM vac	400	1400	hauled water
K-	One source	0	0	hauled water
L-	NN	0	0	
M-	Martin	40	200	provide rig mats
N-	Roywell	9000	9000	acid
O-	Dialog	0	6600	provide BP, cement logging
Daily cost:		\$15,690		
Total cost:		\$46,400		

13-3/8" @ 370'

9-5/8" @ 4199'

5035' sgc w/500 aks

8863'

124 h

9028'

9239'

36h

9271'

squeezed 11235 with 500 aks cement.

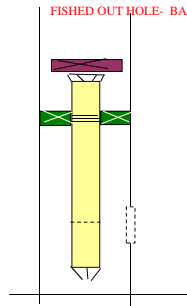
12500'

12540'

Ellenberg formation

7"-260,290,320 @ 12599'

FISHED OUT HOLE- BAKER MOD "D" PACKER AND TAIL PIPES



		daily	total	
A-	J&M	\$3,100	\$18,300	workover rig
B-	Andrews pump	0	\$0	pump repair
C-	Americo	\$1,200	\$7,200	supervisor
D-	prod specialty	0	0	provide dope & Misc items
E-	Beaza	0	0	Roustabout gang
F-	JRC	0	300	dig dirt pit
G-	weatherford	1800	9000	Reverse unit
H-	St.Tucker	50	550	provide BOP
I-	Peak packers	0	0	Rent packers
J-	BM vac	0	1400	hauled water
K-	One source	0	0	hauled water
L-	NN	0	0	
M-	Martin	40	240	provide rig mats
N-	Roywell	0	9000	acid
O-	Dialog	0	6600	provide BP, cement logging
Daily cost:		\$6,190		
Total cost:			\$52,590	

TRIPLE N WELL# MMM-1

13-3/8" @ 370'

9-5/8" @ 4199'

packer @ 8665'

5035" sq. w/500 sks

8863'

124 h

9028'

9239'

36h

9271'

U.penn

L.penn

squeezed 11235 with 500 sks cement.

Ellenberger formation

12500'

12540'

7"-26#, 29#, 32# @ 12599'

PRD 12580'

TD: 12600'

cast iron bridge plug at 9385'

Hadi 10/10/2012

FISHED OUT HOLE- BAKER MOD "D" PACKER AND TAIL PIPES

		daily	total	
A-	J&M	\$3,000	\$24,500	workover rig
B-	Andrews pump	0	\$0	pump repair
C-	Americo	\$1,200	\$9,600	supervisor
D-	prod specialty	0	0	provide dope & Misc items
E-	Beaza	0	0	Roustabout gang
F-	JRC	0	300	dig dirt pit
G-	weatherford	1800	12600	Reverse unit
H-	St.Tucker	50	650	provide BOP
I-	Peak packers	1300	1300	Rent packers
J-	BM vac	0	1800	hauled water
K-	One source	0	0	hauled water
L-	NN	0	0	
M-	Martin	40	320	provide rig mats
N-	Roywell	0	9000	acid
O-	Dialog	0	6600	provide BP, cement logging
Daily cost:		\$7,390		
Total cost:		\$66,670		

13-3/8" @ 370'

9-5/8" @ 4199'

5035' sqc w/500 sks

8863'

124 h U.penn

9028'

9239'

36h L.penn

9271'

squeezed 11235 with 500 sks cement.

Ellenberger formation

12500'

12540'

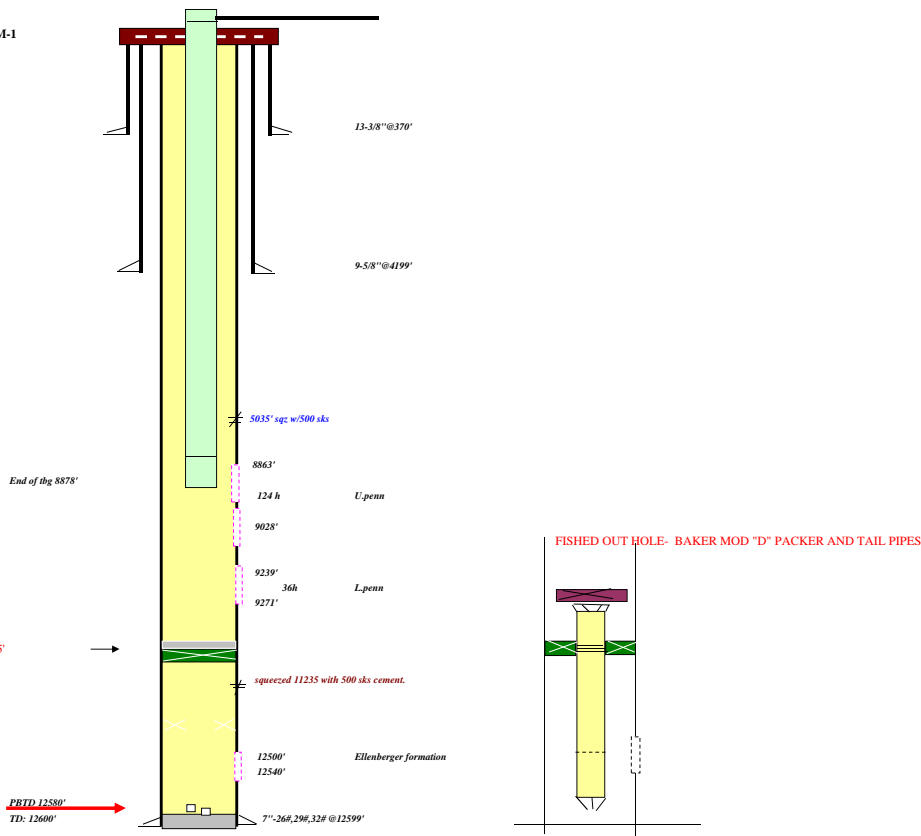
7" - 266, 296, 326 @ 12599'

FISHED OUT HOLE- BAKER MOD "D" PACKER AND TAIL PIPES

		daily	total	
A-	J&M	\$3,300	\$27,800	workover rig
B-	Andrews pump	0	50	pump repair
C-	Americo	\$1,200	\$10,800	supervisor
D-	prod specialty	0	0	provide dope & Misc items
E-	Beaza	0	0	Roustabout gang
F-	JRC	0	300	dig dirt pit
G-	weatherford	0	12600	Reverse unit
H-	St. Tucker	0	650	provide BOP
I-	Peak packers	0	1300	Rent packers
J-	BM vac	0	1800	hauled water
K-	One source	0	0	hauled water
L-	NN	0	0	
M-	Martin	80	400	provide rig mats
N-	Roywell	0	9000	acid
O-	Dialog	0	6600	provide BP, cement logging
Daily cost:		\$4,580		
Total cost:		\$71,250		

cast iron bridge plug at 9385'

Hadi 10/10/2012



DATE: 10/23/2012		Tues		DAILY WORKOVER / COMPLETION REPORT			ISO		
WELL NAME & NO.						FIELD		TRIPLE N	
MMM#1									
API#42-003-01639		TWP		RGE		COUNTY		STATE	
						ANDREWS		TX	
AFE NO.		AFE- N-17566.....		W.L. 100%		GROSS AFE			
						\$119,300			
JOB DESCRIPTION:						SUPPLEMENT 1			
To plug back higher: pull prod equipment, set cast iron bridge plug to isolated the Ellenberger formation, dump 15' of cement on top of bridge plug. Acidize upper/lower open Pen formation perfs, swab and put well back to pumping.						TOTAL GROSS AFE			
		SIZE		WT.		GRADE		DEPTH	
C		13-3/8"		48#		H-40		370'	
S		9-5/8"		36# & 40#		K-55		4,199'	
G		7"		26#, 29# & 32"		N80,S95		12599'	
T		2-7/8"		6.50#		L80		8RD	
B						Ukraine pipe			
G									
PERFS:									
						TD		PBTD	
								PERFS	
								BODY	
COST ITEMS		Estimate \$		VENDOR		PKR/TAC		S.N. @	
								EOT @	
								ON-OFF	
RIG		2400		J&M		-A			
PUMP REPAIR		0		Andrews pump		-B		WORK PERFORMED	
SUPERVISOR		1200		Americo		-C		Start Time: 7am Stop time: 1:30 pm	
Pipe dope/rods		0		Prod specialty		-D		Opened well, step=0, sltp=0# Held safety meeting w/crew.	
Back hose		0		Beaza		-E		Waited on day light. Changed polished rod liner, and slacked off on rods	
Reverse unit		0		JRC		-F		tag and re-spaced with 8' and 4' pony rods and polished rod. HWOB.	
BOP's		0		weatherford		-G			
Packer Rent		0		ST		-H		put well to pumping. Checked pump action good. BM.Vac filled up tubing	
VAC trucks		300		BM Vac		-J		with 30 bbl of fresh water. Re-checked pump action, good.	
VAC trucks		0		One source		-K		Rig down J&M well service and moved off location. Turned the well over to	
		0						production .	
Rig Mats		40		Martin		-M		Rods Landing: 2-1/2"x1-1/4"x24' pump, 6 wt. bars, 141-3/4" rods, 106-7/8",	
Acidizing		0		Roywell		-N		96-1" steel sucker rods, 8', 4' pony and 1-1/4"x24' polish rod.	
Log/CIBP-cnt		0		Dialog		-O			
						pump: Lufkin 640- with 7 strk/mint.			
						Note: This is a low volume fluid well of 80 bbl/day. Need to reduce the			
						stroke length of pumping unit to 144" to avoid breaking			
						the rods due to pumping off condition.			
						Note II- Total volume of wash water to recover 660 bbl of water from			
						3/12/2012 to 10/23-2012			
						FINAL REPORT.			
DAILY COST						ACCIDENTS: -0-			
PREVIOUS COST						REPORT BY: Hadi			
TOTAL COST						PHONE: 361-649-7340			

	daily	total	
A- J&M	\$2,400	\$30,200	workover rig
B- Andrews pump	0	\$0	pump repair
C- Americo	\$1,200	\$12,000	supervisor
D- prod specialty	0	0	provide dope & Misc items & sucker rods 3/4" :
E- Beaza	0	0	Roustabout gang
F- JRC	0	300	dig dirt pit
G- weatherford	0	12600	Reverse unit
H- St.Tucker	0	650	provide BOP
I- Peak packers	0	1300	Rent packers
J- BM vac	300	2100	hauled water
K- One source	0	0	hauled water
L- NN	0	0	
M- Martin	40	440	provide rig mats
N- Roywell	0	9000	acid
O- Dialog	0	6600	provide BP, cement logging
Daily cost:	\$4,580		
Total cost:		\$75,190	

TRIPLE N WELL# MMM-1

