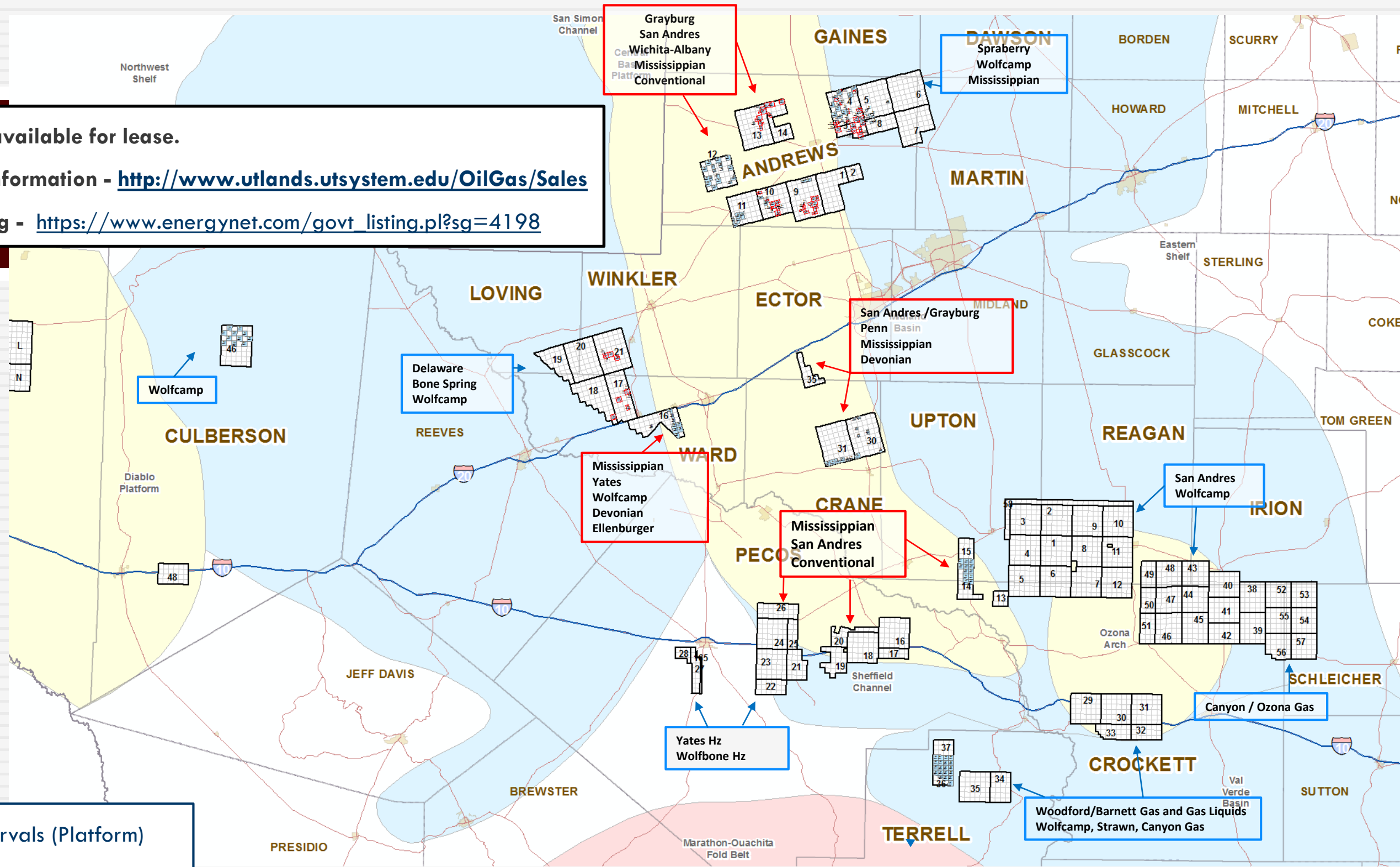


Lease Sale 129: September 19, 2018

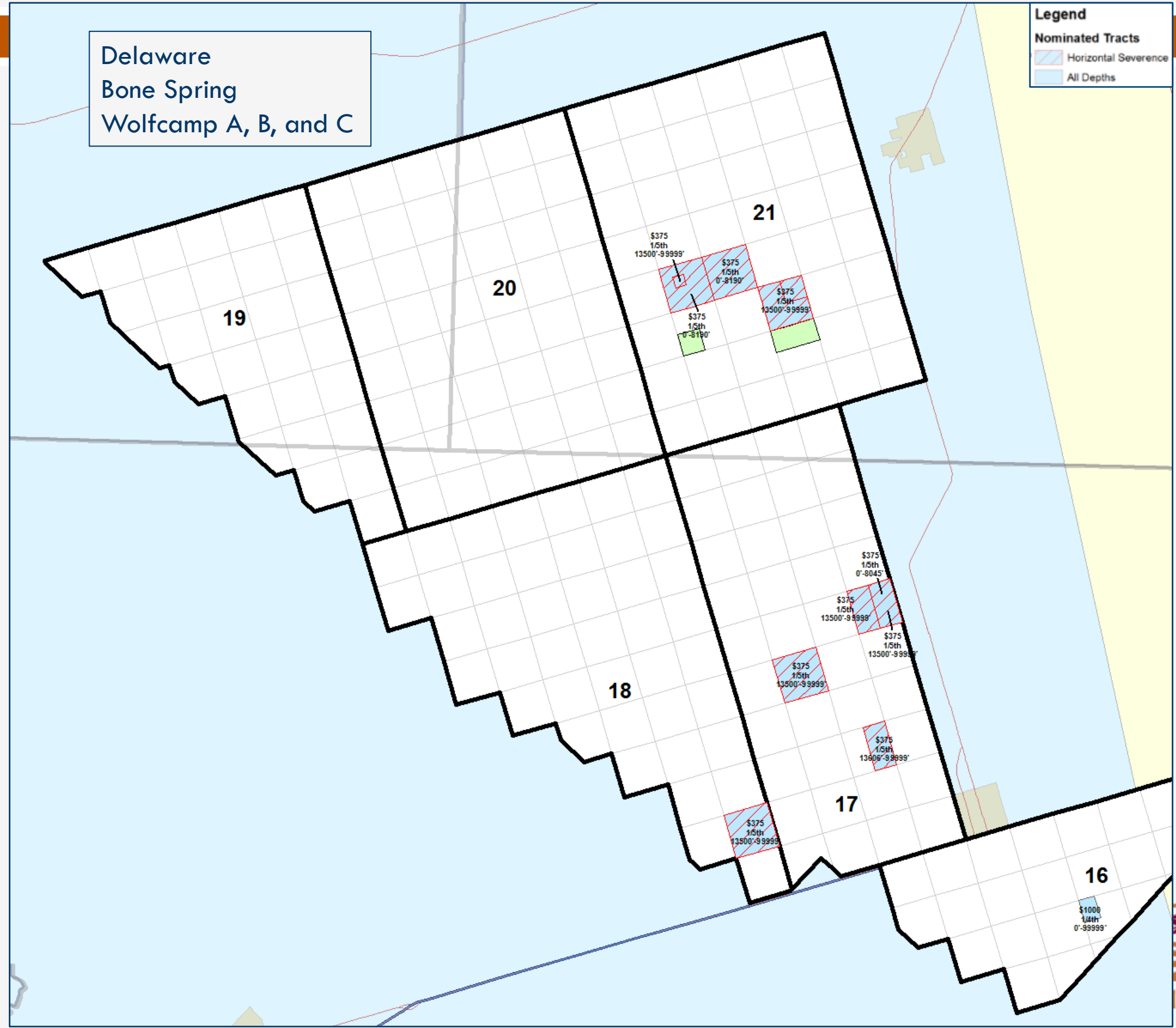
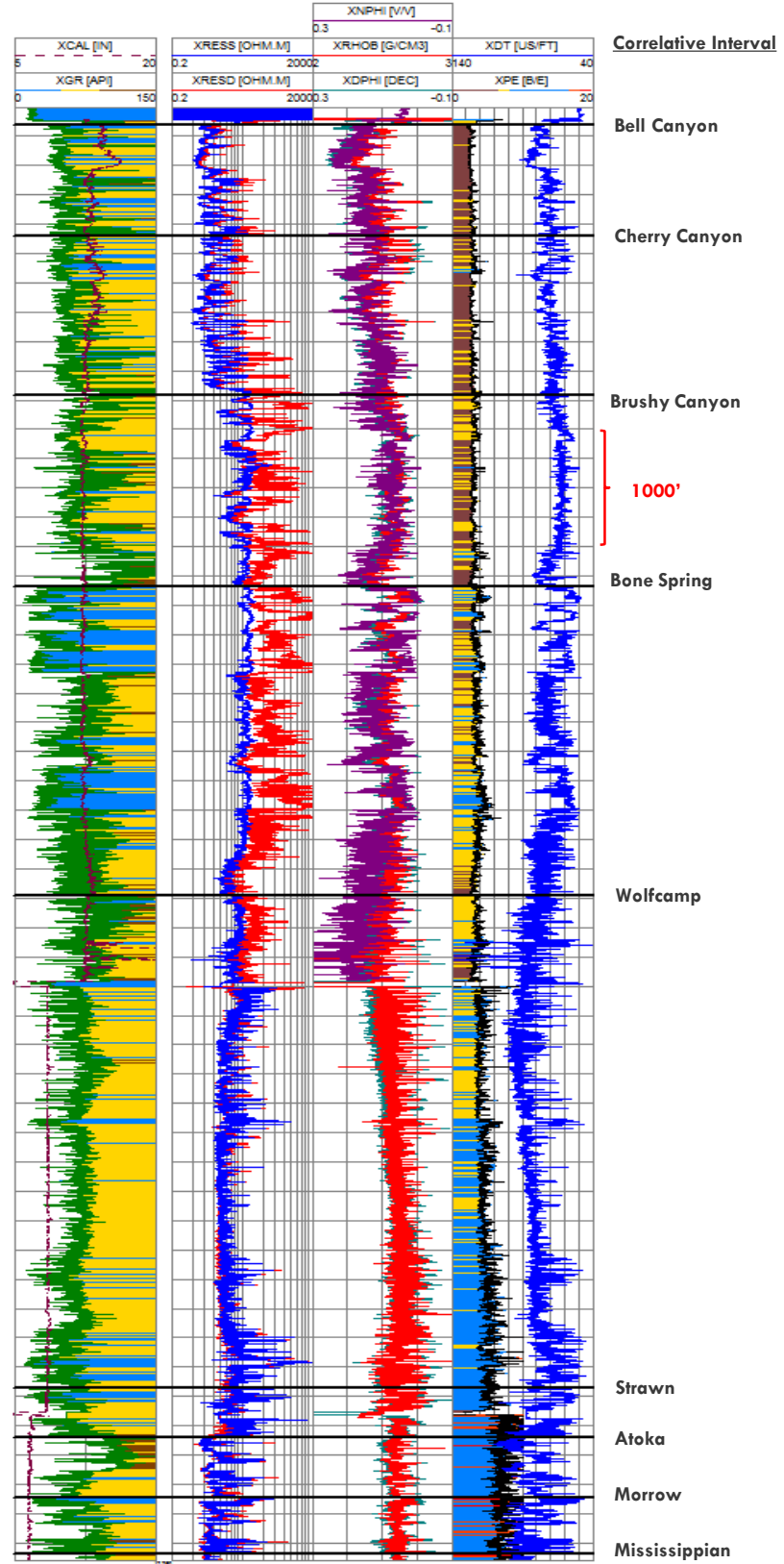
-  ~77,000 acres available for lease.
-  UL Lease Sale information - <http://www.utlands.utsystem.edu/OilGas/Sales>
-  EnergyNet listing - https://www.energynet.com/govt_listing.pl?sg=4198



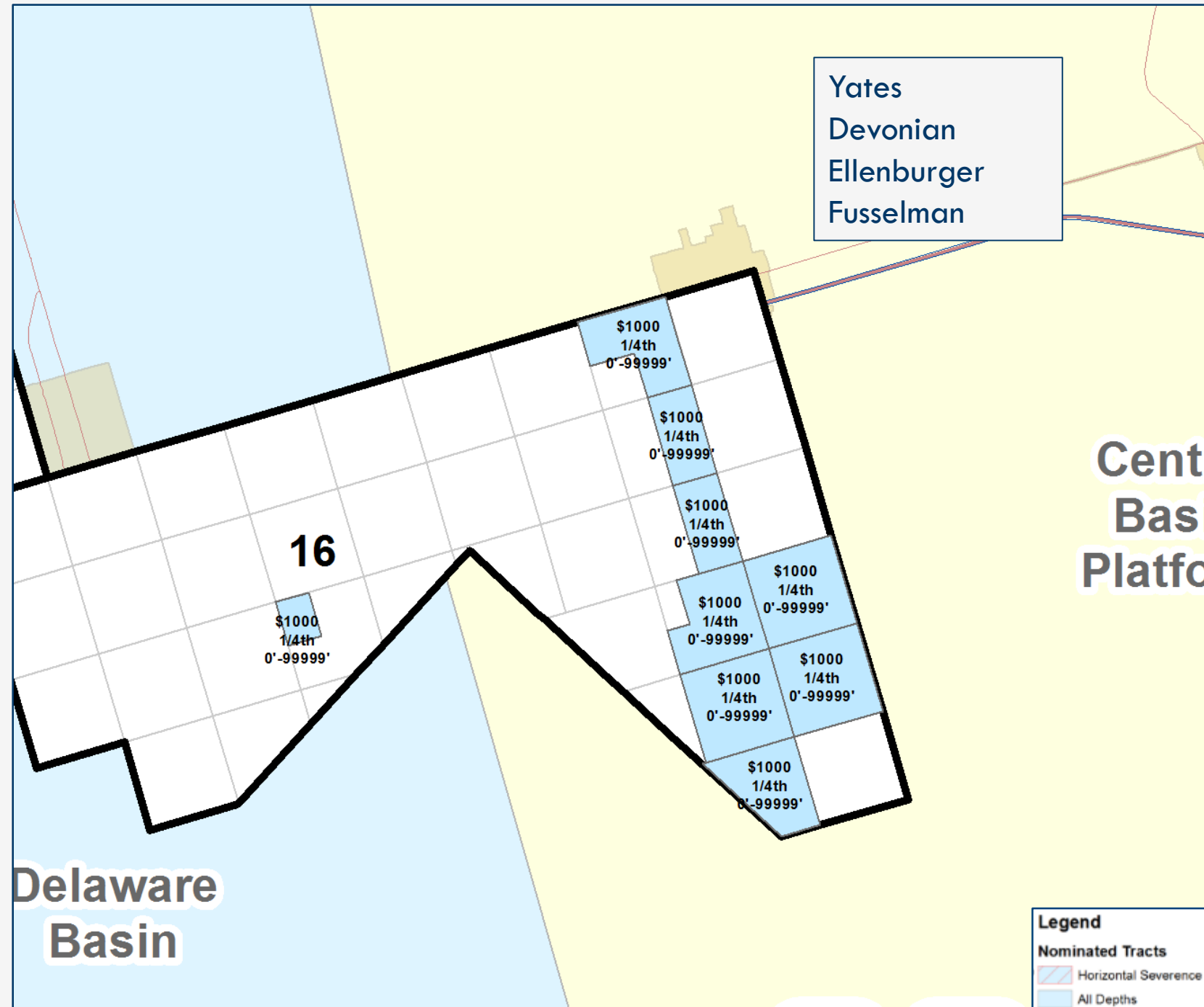
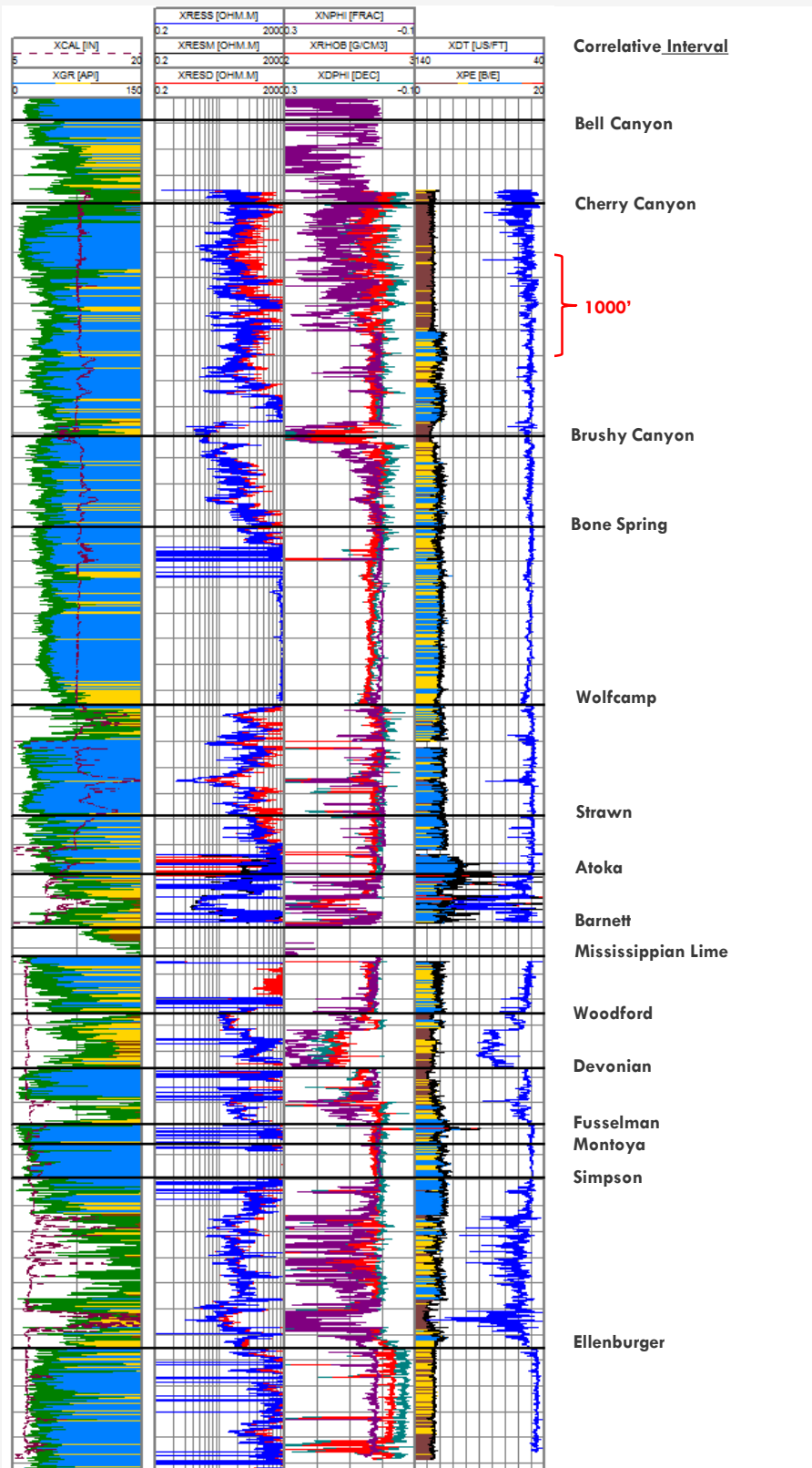
-  Prospective intervals (Platform)
-  Prospective intervals (Basin)
-  Sale Tracts – Horizontal Severance
-  Sale Tracts – All Depths



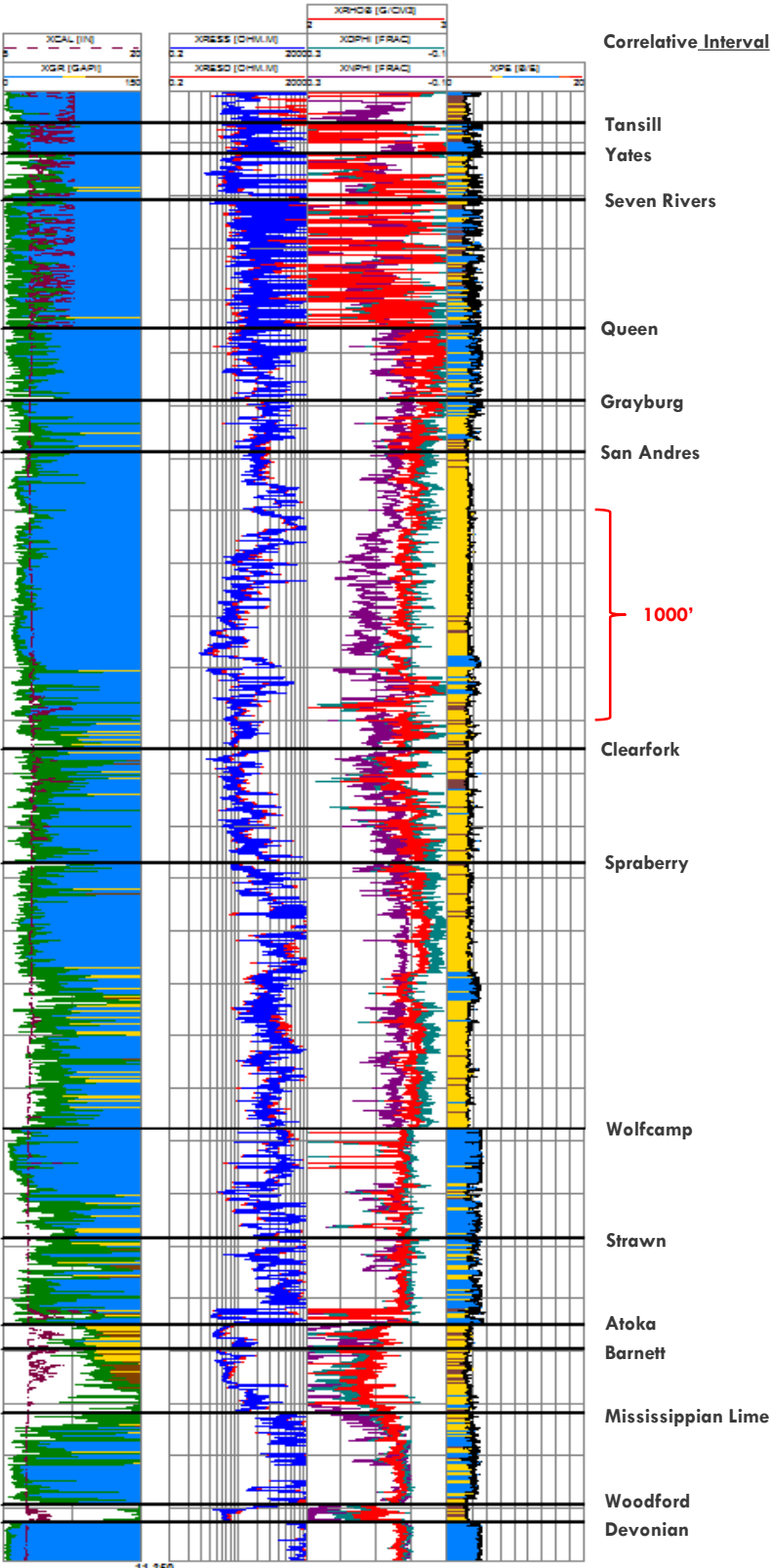
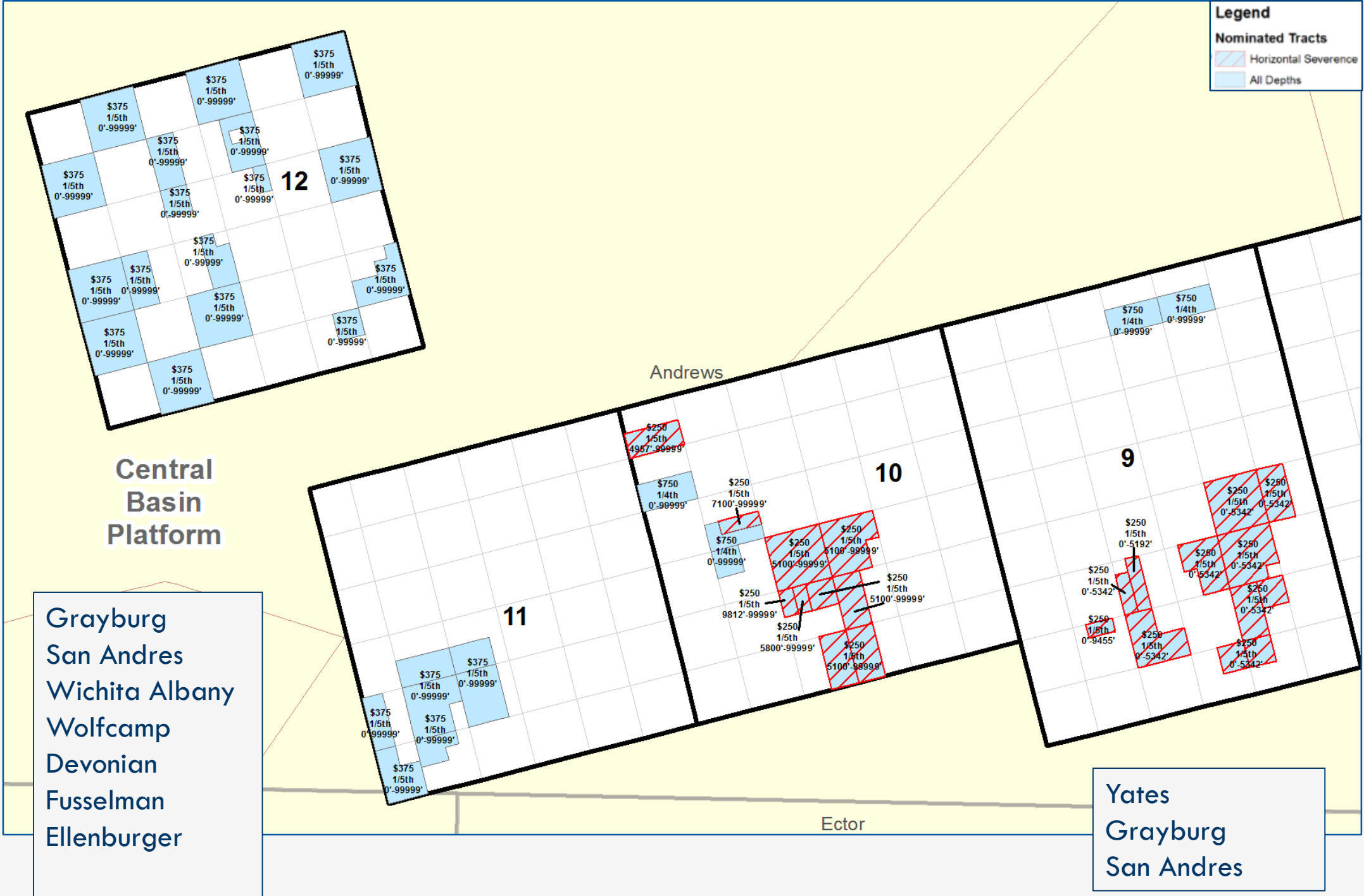
Delaware Basin



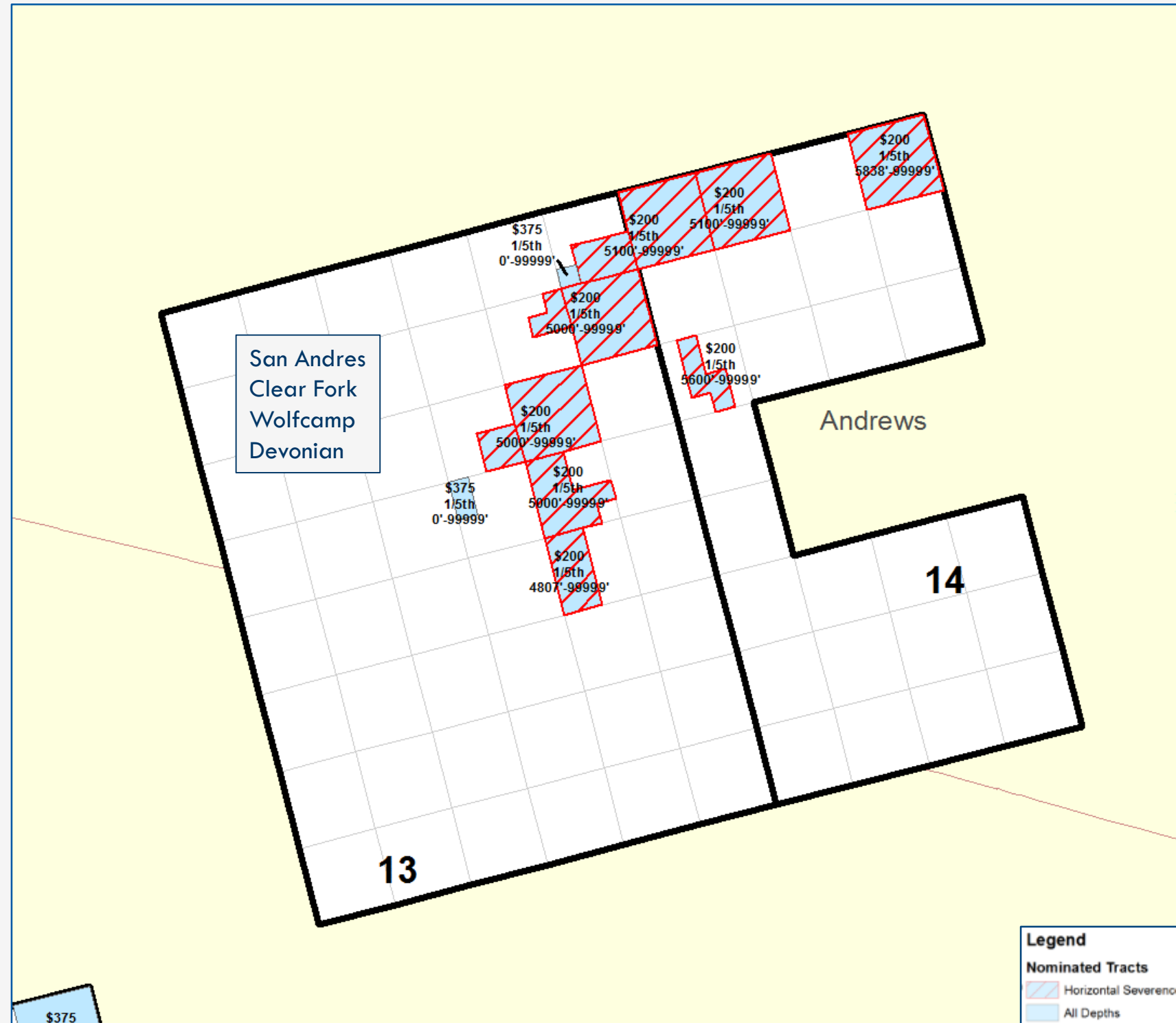
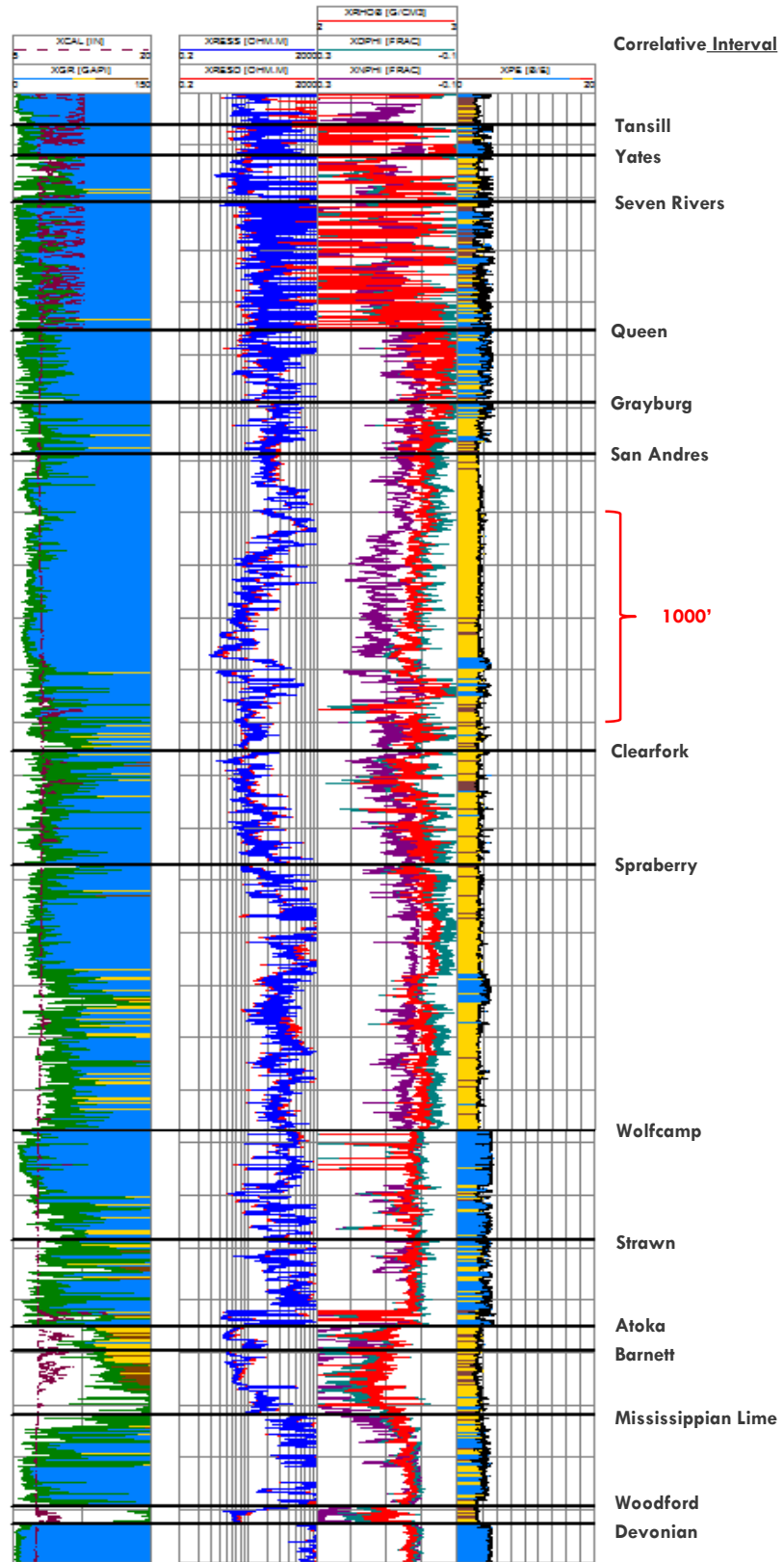
Western Central Basin Platform



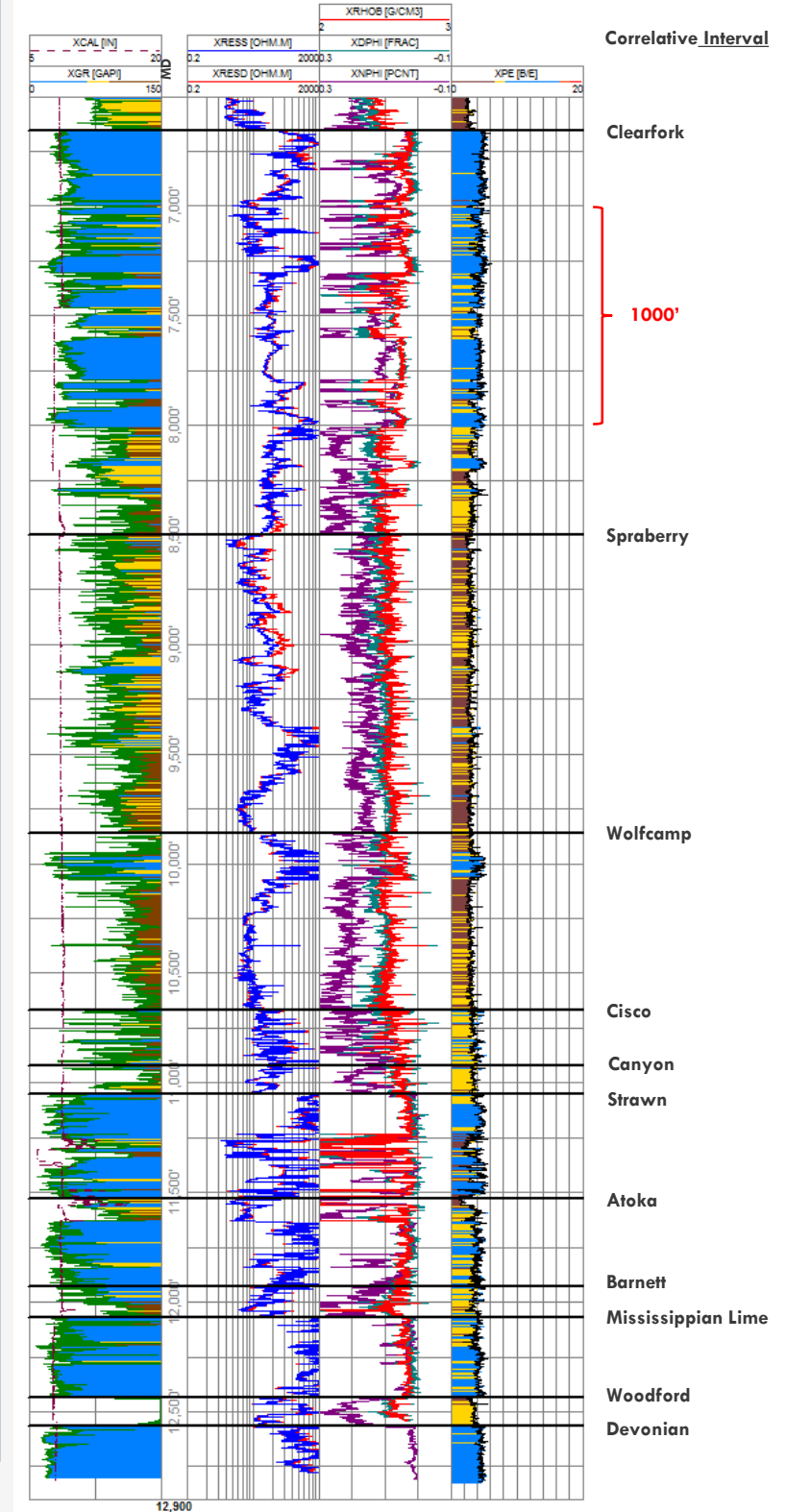
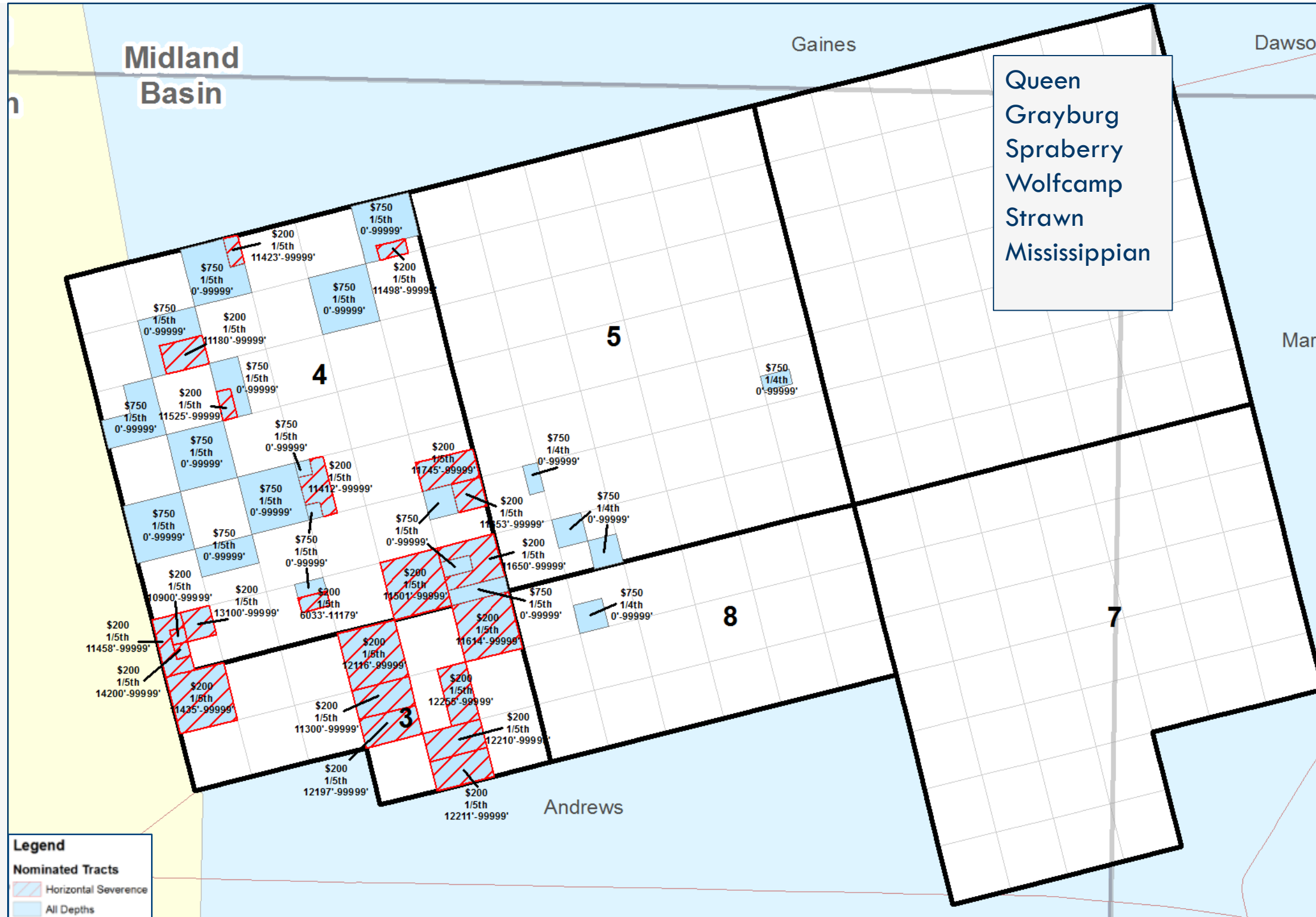
Northern Central Basin Platform



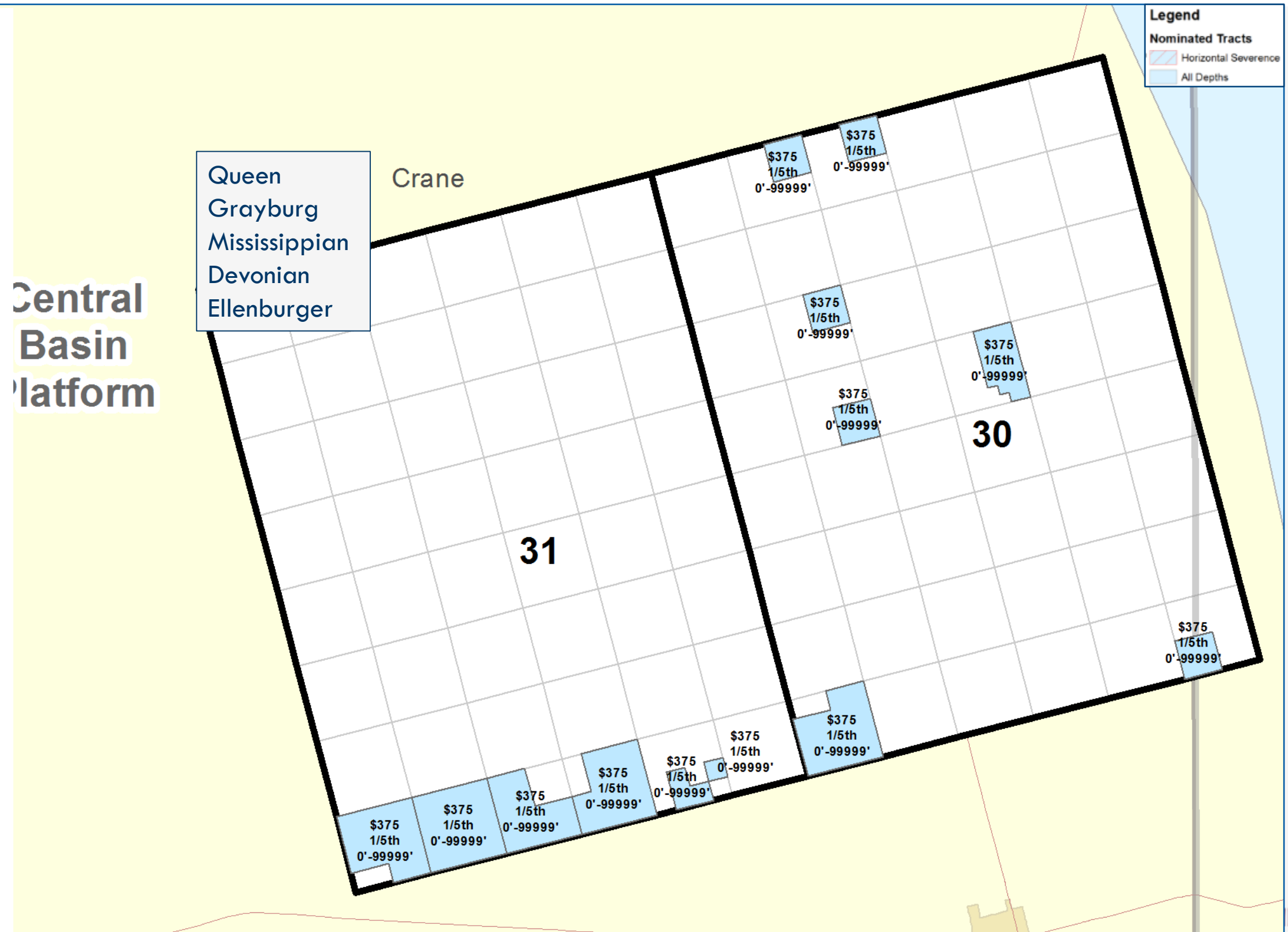
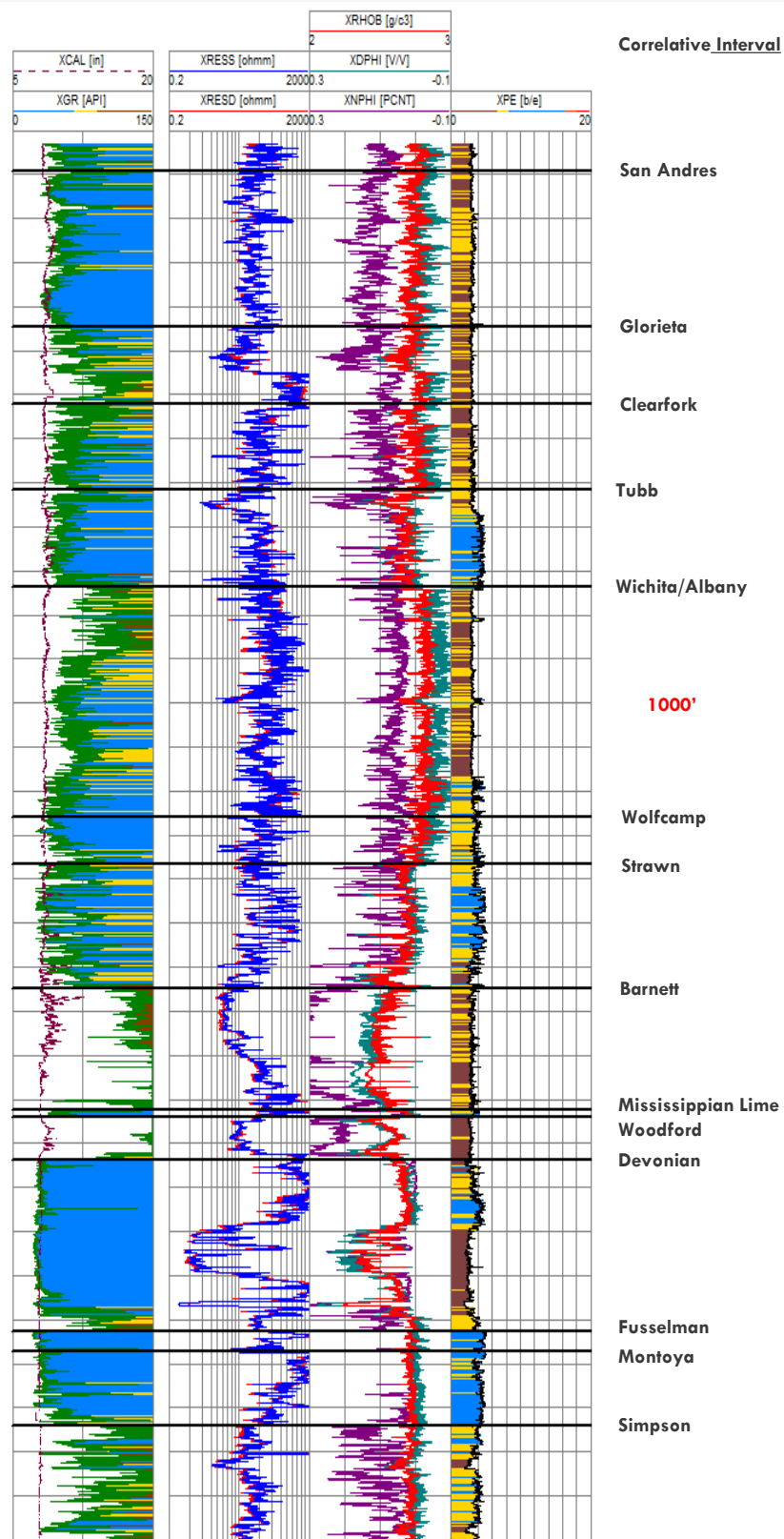
Northern Central Basin Platform



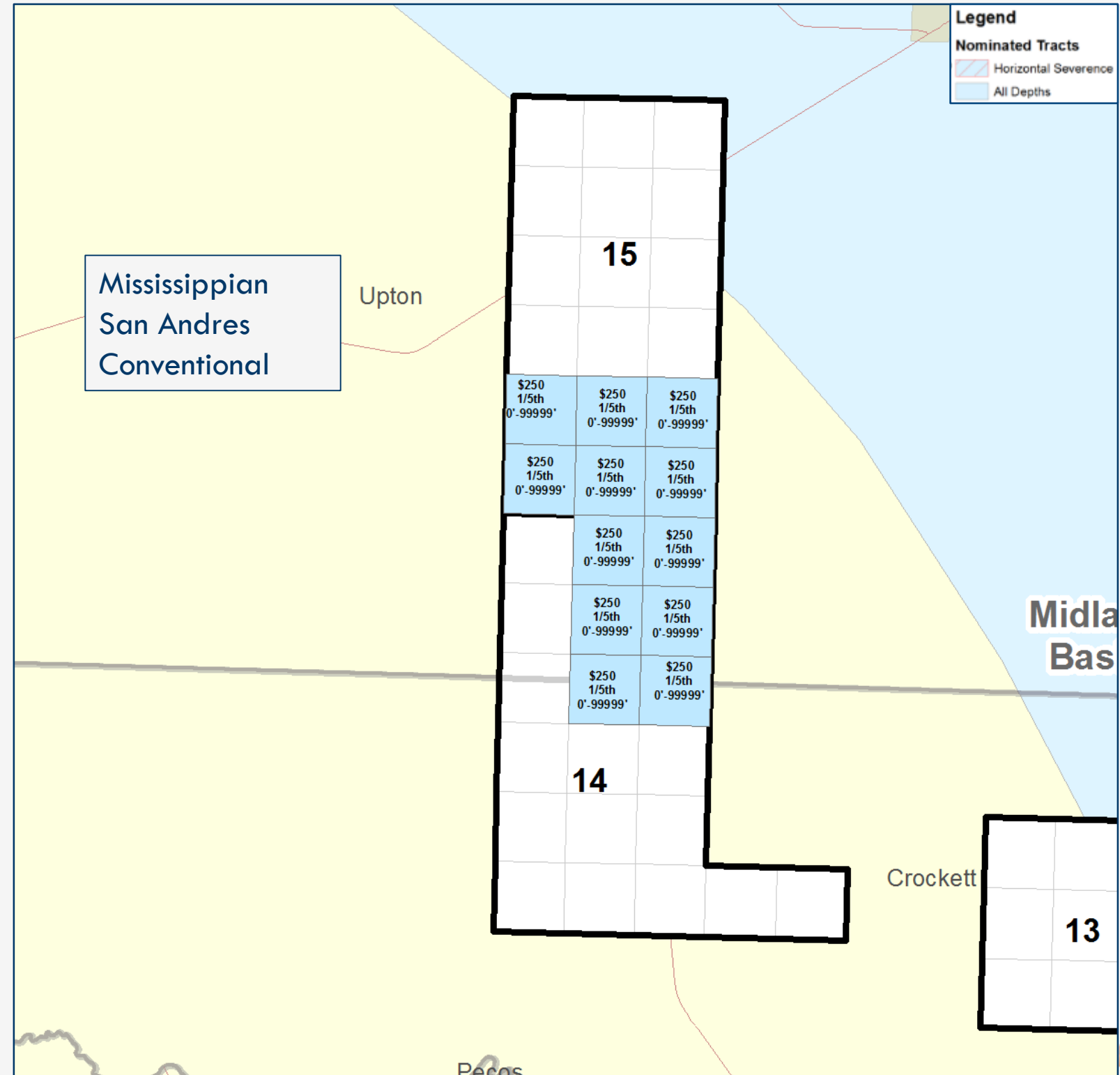
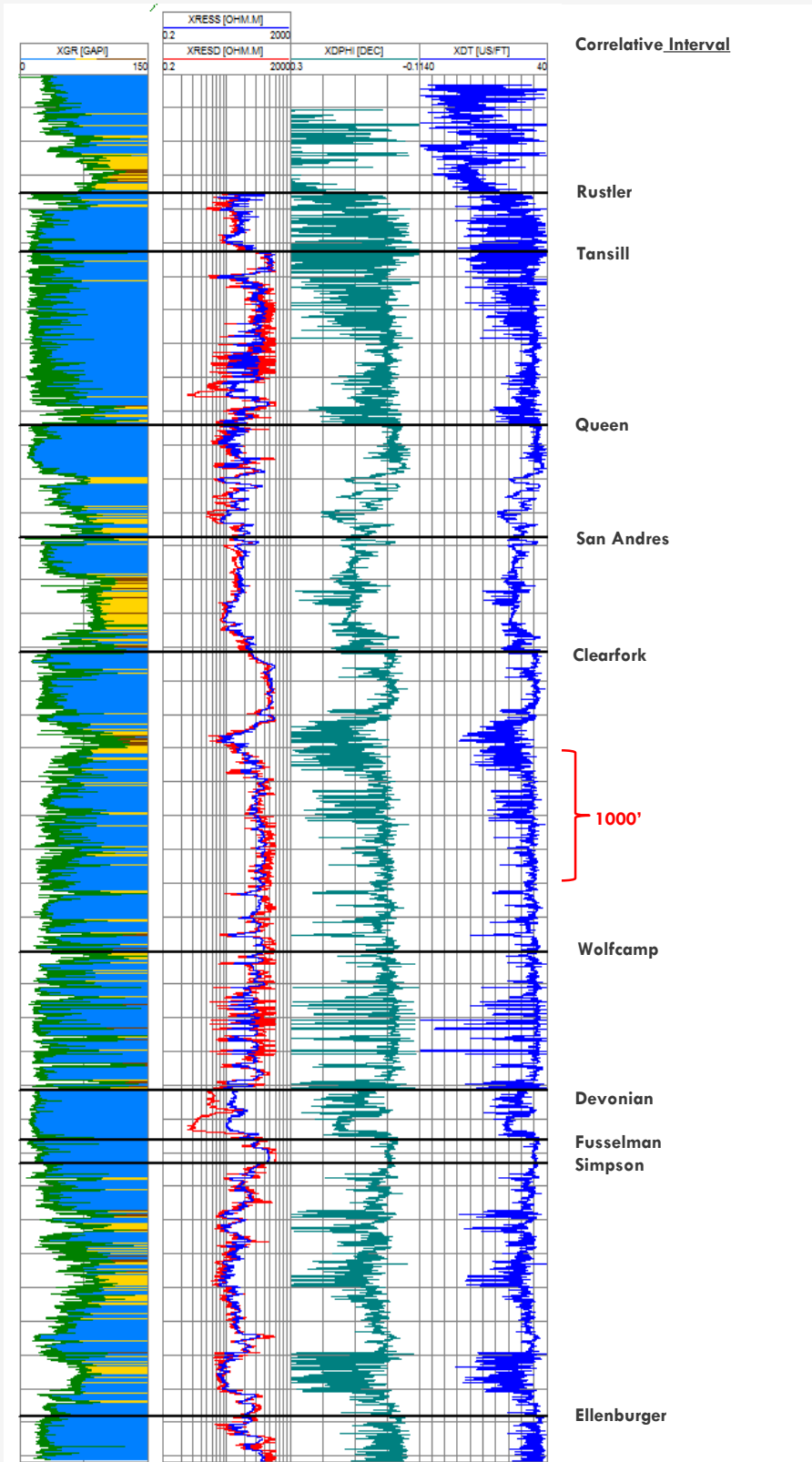
Northern Midland Basin



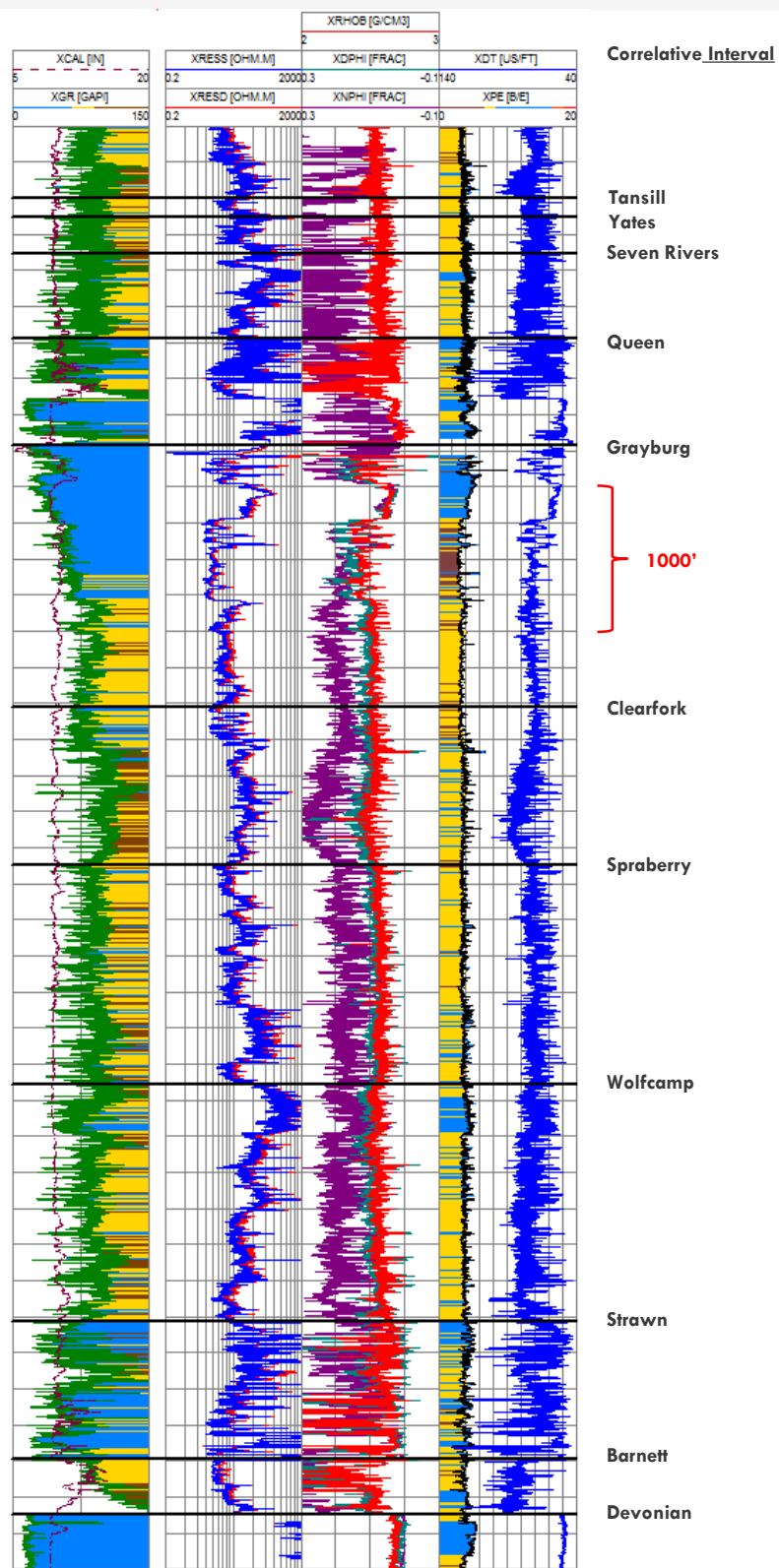
Mid Central Basin Platform



Southern Central Basin Platform



Val Verde Basin



Pecos
Val Verde
Basin

Woodford/Barnett Gas and Gas Liquids
Wolfcamp
Strawn
Canyon Gas

37			
\$200 3/16th 0'-99999'	\$200 3/16th 0'-99999'	\$200 3/16th 0'-99999'	\$200 3/16th 0'-99999'
\$200 3/16th 0'-99999'	\$200 3/16th 0'-99999'	\$200 3/16th 0'-99999'	\$200 3/16th 0'-99999'
\$200 3/16th 0'-99999'	\$200 3/16th 0'-99999'	\$200 3/16th 0'-99999'	\$200 3/16th 0'-99999'
\$200 3/16th 0'-99999'	\$200 3/16th 0'-99999'	\$200 3/16th 0'-99999'	\$200 3/16th 0'-99999'
	\$200 3/16th 0'-99999'	\$200 3/16th 0'-99999'	\$200 3/16th 0'-99999'
36			\$200 3/16th 0'-99999'

Legend
Nominated Tracts
Horizontal Severence
All Depths

Western Delaware Basin

